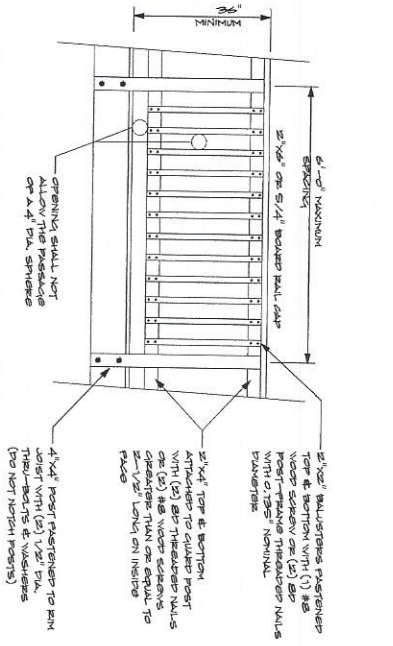
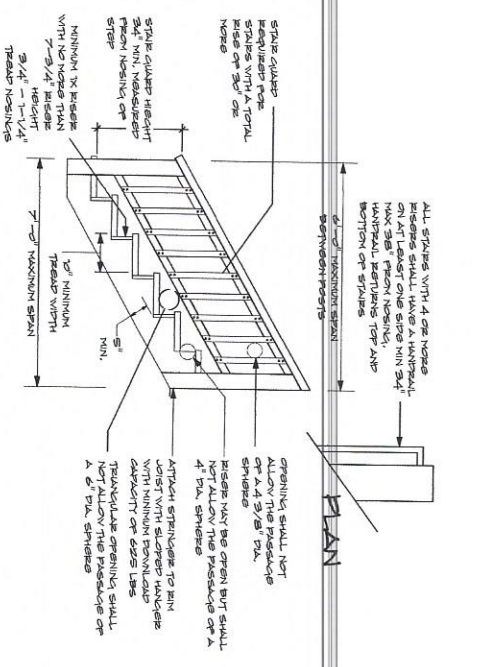


ALL PECKS TO BE BUILT IN ACCORDANCE WITH THE 2009 IRC PREScriptive RESIDENTIAL WOOD PECK CONSTRUCTION GUIDE

ALL MATERIALS, COMPONENTS, MECHANICAL CONNECTIONS, FASTENERS, ETC. SHALL BE COMPATIBLE WITH PREScriptive TREATED WOOD PRODUCTS.



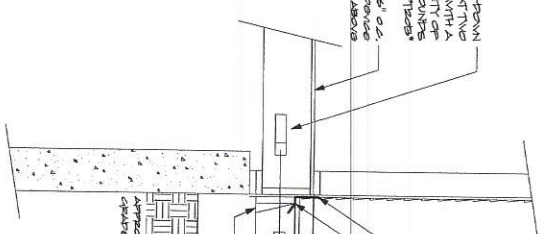
GUARD DETAIL
NOT TO SCALE



STAIR DETAIL
NOT TO SCALE

INSTALL SIMPSON HOLD-DOWN TENSION DEVICE AT TWO LOCATIONS PER PECK WITH A MINIMUM DESIGN CAPACITY OF 1500 POUNDS LITERS

FLASH SHEATHING MINIMUM 6" O.C. TO JOIST WITH HOLD-DOWN DEVICE STRENGTHENED ABOVE



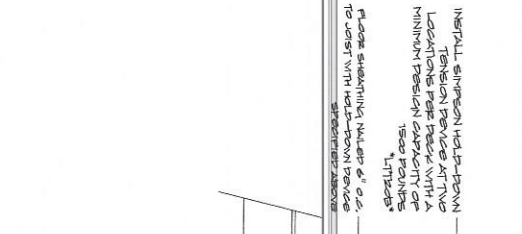
TYPICAL PROP BEAM PECK
NOT TO SCALE

P.T. COMPATIBLE CONTINUOUS FLASHING & JOIST HAKERS TO HAVE MINIMUM DESIGN CAPACITY OF 750 LBS

ATTACH JOISTS TO BEAM WITH (3) 8# THREADED ROD NAILS (2) ON ONE SIDE (1) ON THE OTHER

INSTALL SIMPSON HOLD-DOWN TENSION DEVICE AT TWO LOCATIONS PER PECK WITH A MINIMUM DESIGN CAPACITY OF 1500 POUNDS LITERS

P.O. BOX 67
CONWAY, AR
708-958-1



TYPICAL FLUSH BEAM PECK
NOT TO SCALE

P.T. COMPATIBLE CONTINUOUS FLASHING & JOIST HAKERS TO HAVE MINIMUM DESIGN CAPACITY OF 750 LBS

ATTACH JOISTS TO BEAM WITH (3) THREADED NAILS OR (2) 8# SCREWS

P.O. BOX 67
CONWAY, AR
708-958-1