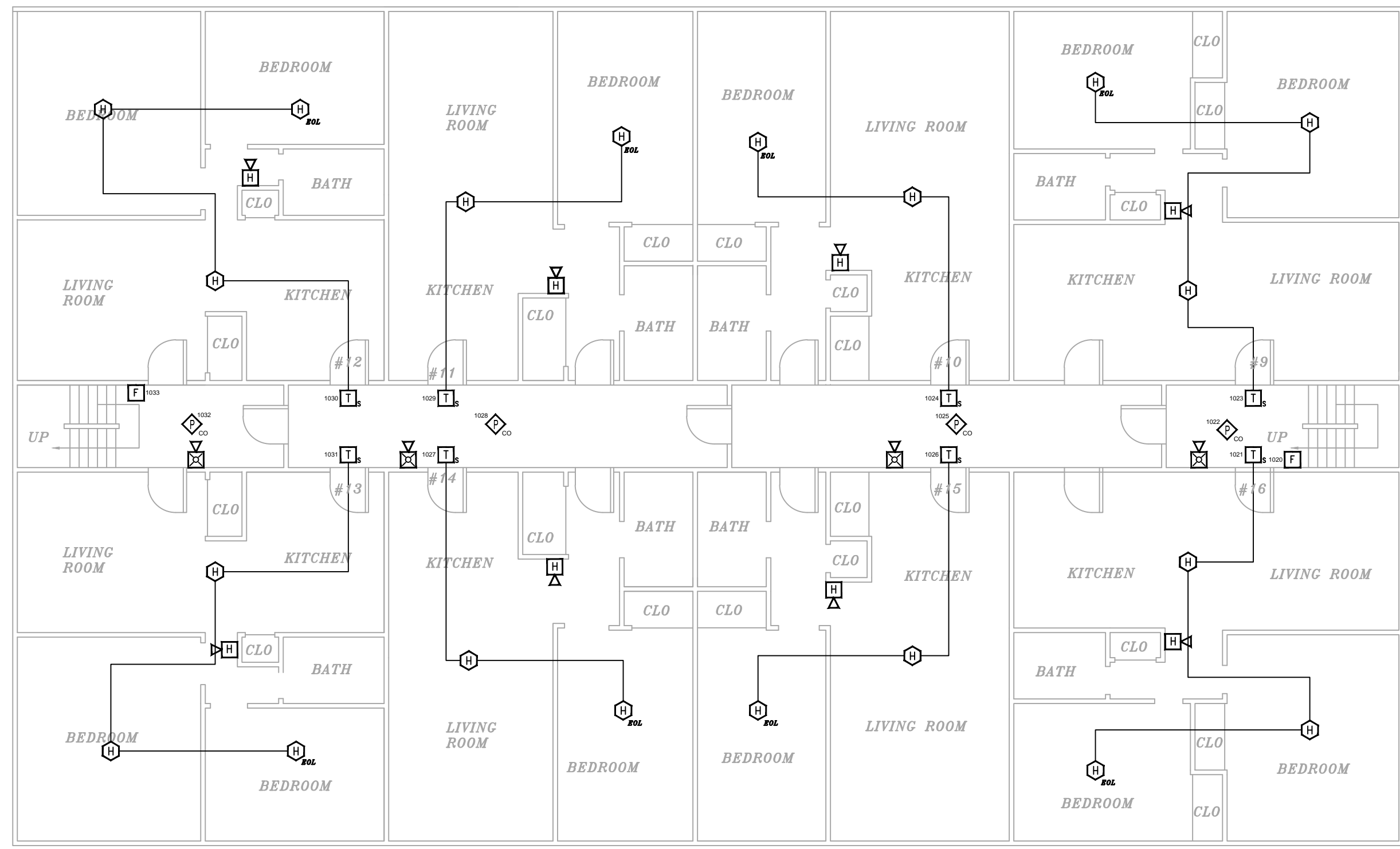
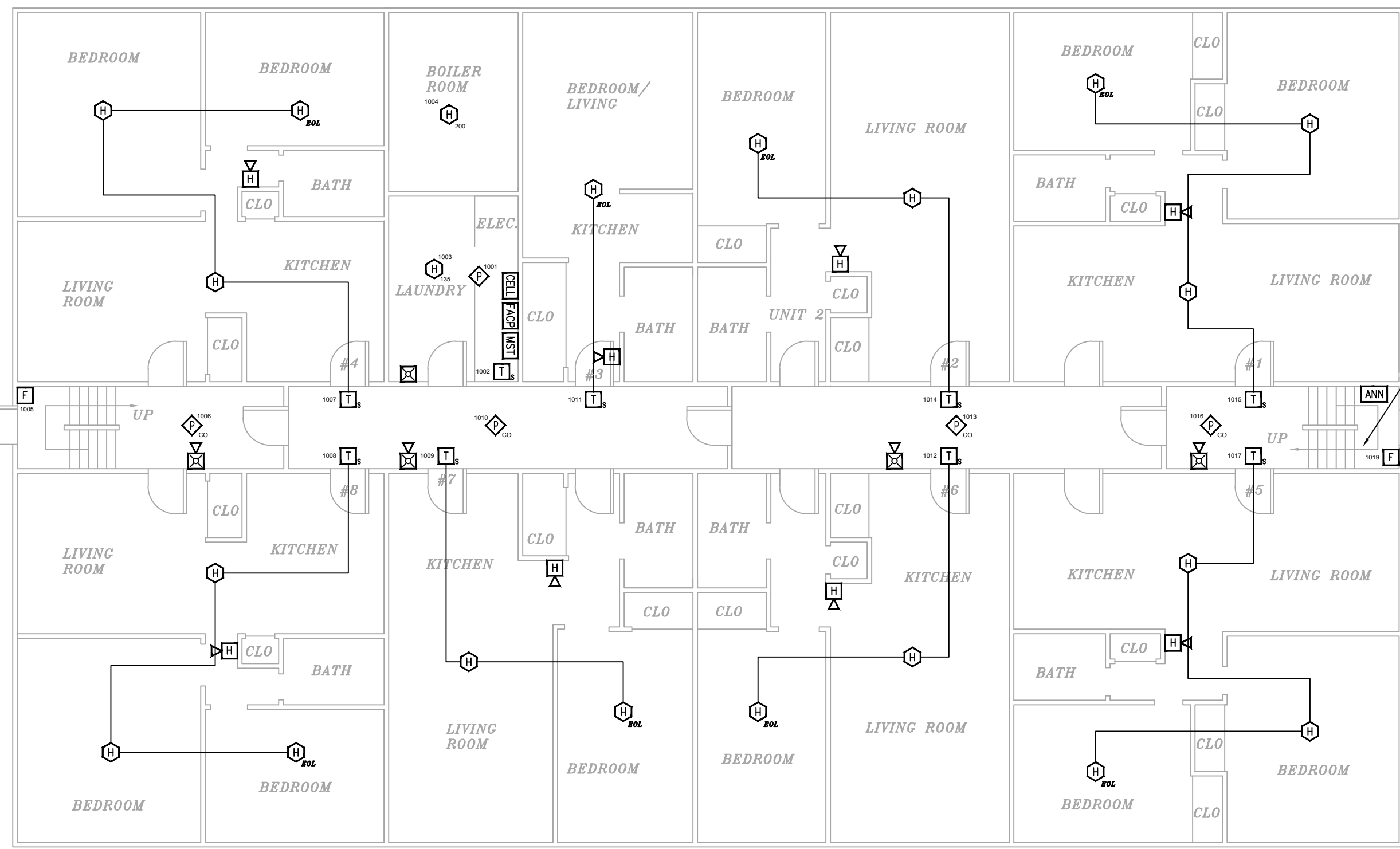


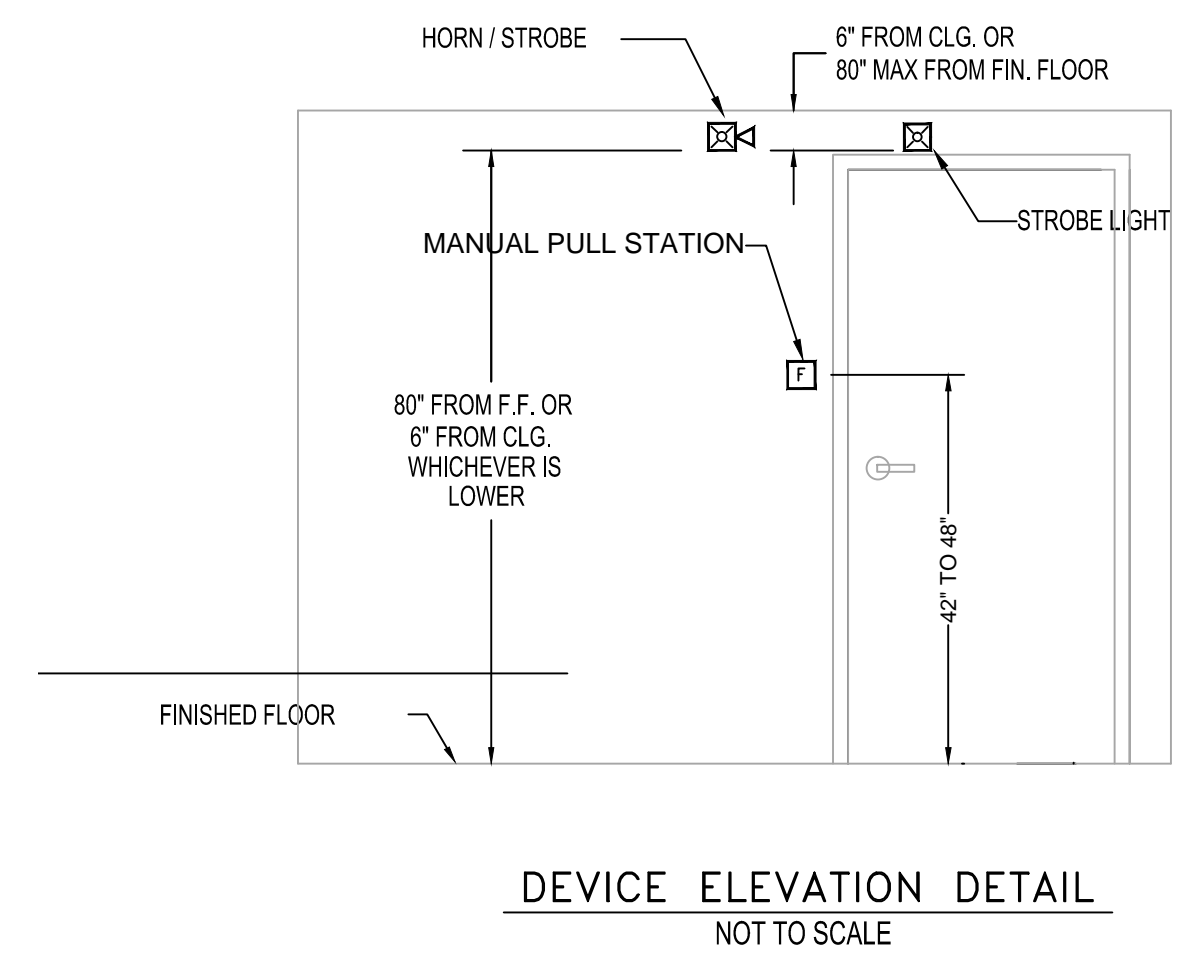
FIRE ALARM SYSTEM LAYOUT - SECOND FLOOR
SCALE: 1/8"=1'



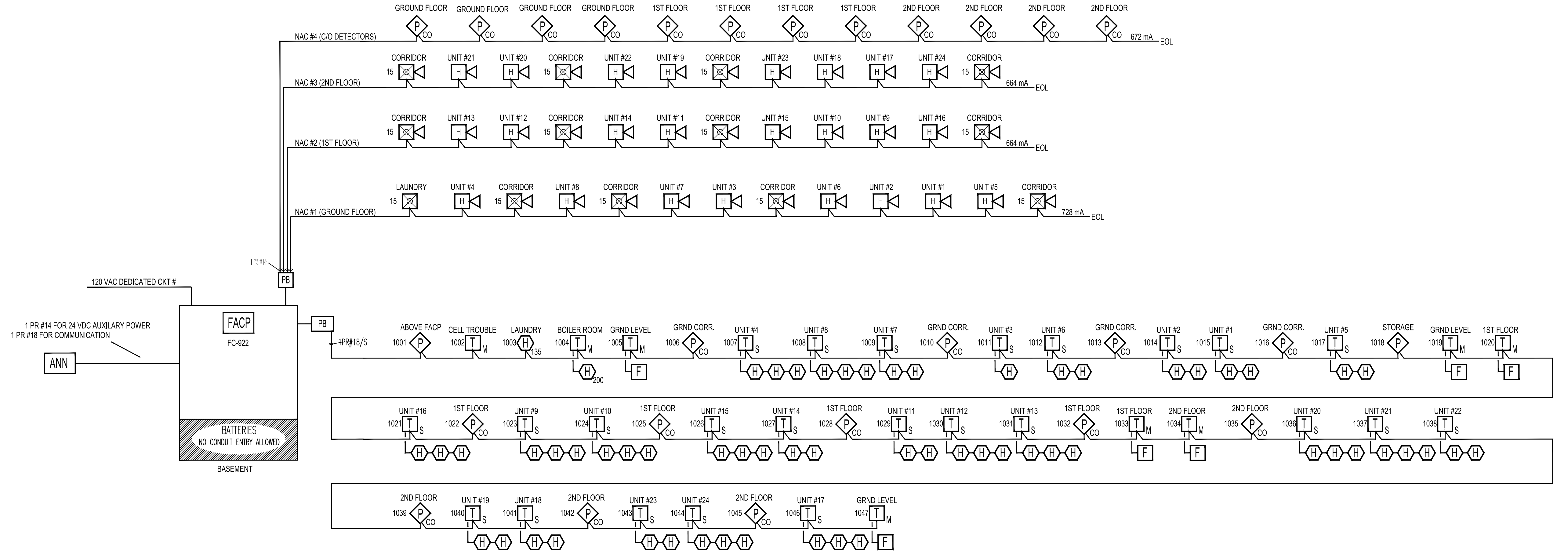
FIRE ALARM SYSTEM LAYOUT - FIRST FLOOR
SCALE: 1/8"=1'



FIRE ALARM SYSTEM LAYOUT - GROUND LEVEL
SCALE: 1/8"=1'

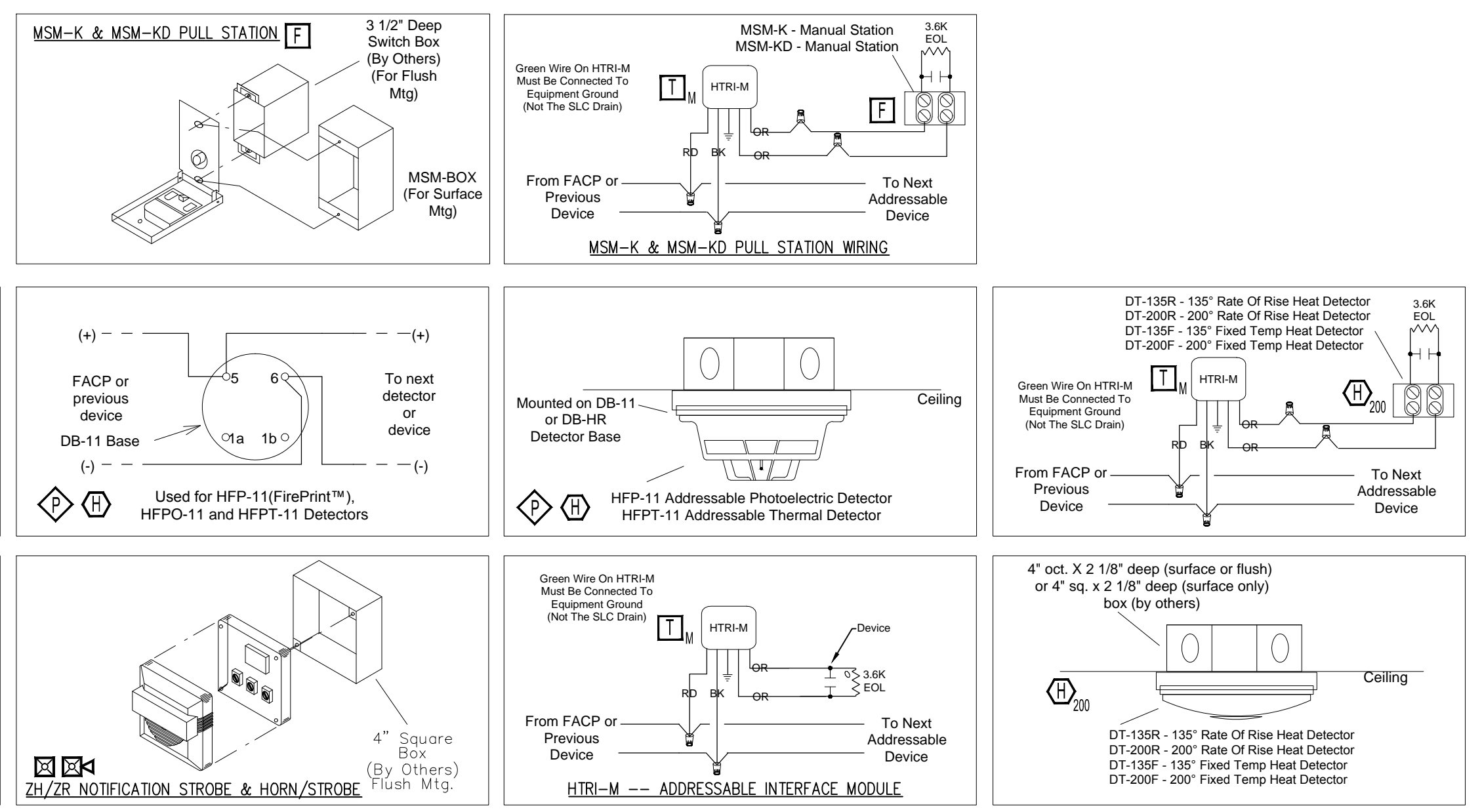


DEVICE ELEVATION DETAIL
NOT TO SCALE

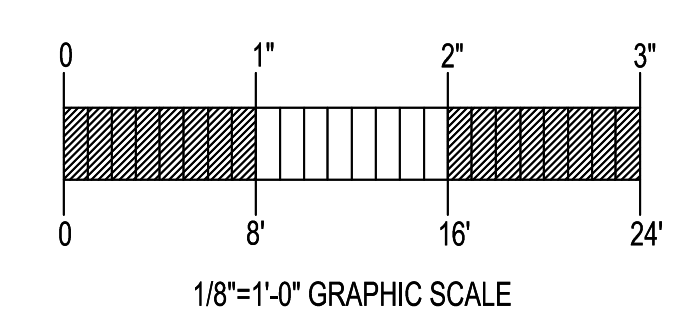


FIRE ALARM RISER DETAIL
SCALE: N.T.S.

SYMBOL LEGEND				
QUANT.	SYM.	DESCRIPTION	MODEL	BACK BOX
1	[FCP]	FIRE ALARM CONTROL PANEL	FC-922	ENCLOSURE
1	[ANN]	AES RADIO MASTER BOX		ENCLOSURE
1	[ANN]	FIRE ALARM ANNUNCIATOR	FT2015-R3	ENCLOSURE
2	[HFP]	CEILING SMOKE DETECTOR/BASE	HFP-11/DB-11	SINGLE GANG OCTAGON BO
12	[HFP]	CEILING SMOKE/CO DETECTOR/BASE	OOHC941/DB-11	SINGLE GANG OCTAGON BO
1	[HFP]	THERMAL DETECTOR/ BASE	HFP-11/DB-11	SINGLE GANG OCTAGON BO
59	[HFP]	THERMAL DETECTOR/ BASE	DT-135R	SINGLE GANG OCTAGON BO
1	[HFP]	200 DEGREE THERMAL DETECTOR/ BASE	DT-200F/HTRI-M	SINGLE GANG OCTAGON BO
6	[MPS]	MANUAL PULL STATION	MSM-KD/HTRI-M	3.5" DEEP SINGLE GANG
24	[HTRI]	SINGLE INPUT MONITOR MODULE	HTRI-S	4" SQUARE E
24	[ZH]	FIRE ALARM HORN	ZH-R	4" SQUARE
12	[ZH]	FIRE ALARM MULTI CANDELLA HORN/STROBE	ZH-MC-R	4" SQUARE
1	[ZH]	FIRE ALARM MULTI CANDELLA STROBE	ZR-MC-R	4" SQUARE
1	[KNOX]	KNOX BOX		
1	[HORN]	EXTERIOR HORN/STROBE	MTH-15-115-R-WF	
1	[COMM]	CELLULAR COMMUNICATOR	GS3055-ICF	ENCLOSURE



DEVICE MOUNTING & WIRING DETAIL
SCALE: N.T.S.



1/8"=1'-0" GRAPHIC SCALE

GENERAL NOTES		DATE	REVISIONS	REQUIRED APPROVALS	HUNTINGTON APTS 326 AUBURN ST. PORTLAND, ME	FIRE ALARM SYST PLANS & DETAIL DWG. NO. 1 OF 1
SCOPE OF WORK: INSTALL NEW ADDRESSABLE FIRE ALARM SYSTEM. ALL INSTALLATION PRACTICES SHALL COMPLY WITH NFPA 70, 72, 720.				OWNER PORTLAND FIRE DEPARTMENT		
PHASE 1: REPLACE CONTROL PANEL				DRAWN BY CRM	CONTRACT WITH: OWNER	JOB NUMBER
PHASE 2: INSTALL NEW DEVICES				CHECKED BY BWB	EASTERN FIRE SERVICES, INC. <small>AUBURN/LEWISTON INDUSTRIAL AIRPARK, AUBURN, MAINE 04270</small>	SCALE AS SHOWN
NOTE: PHASE 2 TO BEGIN IMMEDIATELY FOLLOWING PHASE 1				CONTRACTOR LICENSE #		DATE 1/23/13