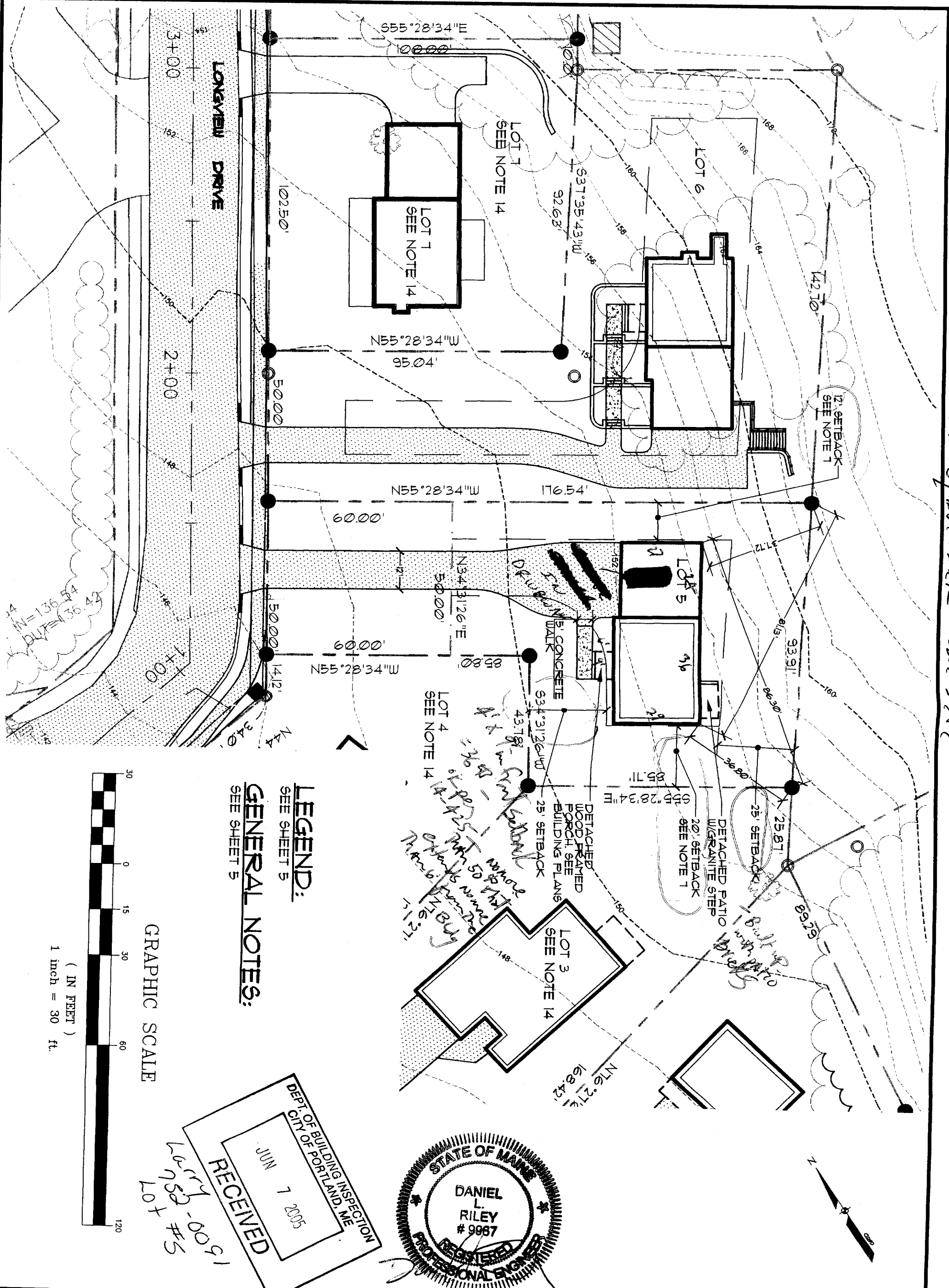


JIM LONBARDO/BUILDOR 388-5404



LEGEND:
SEE SHEET 5
GENERAL NOTES:
SEE SHEET 5

DEPT. OF BUILDING INSPECTION
CITY OF PORTLAND, ME
JUN 7 2005
RECEIVED

STATE OF MAINE
REGISTERED PROFESSIONAL ENGINEER
DANIEL L. RILEY
9967

SITE PLAN
OF:
LOT 5 AUBURN ESTATES
LONGVIEW DRIVE
PORTLAND, MAINE
FOR:
LARRY STURDIVANT
191 STATE ROAD, SUITE 2
KITTERY, MAINE 03904

DESIGN BY: MTW
DRAWN BY: MTW
CHECKED BY: DLR
DATE: 3-9-05
SCALE: 1"=30'
FIELD BK: 778
PROJ. NO: 03453
DRAWING: 03453G_LOTS

Sebago Technics
Engineering Expertise You Can Build On
One Chabot Street
Westbrook, Me 04098-1339
Tel (207) 856-0277

Larry - 009
Lot #5

no more
at 14 ft from porch
14 ft from porch
14 ft from porch
14 ft from porch
14 ft from porch
14 ft from porch

6-7-05
MOF
Contract