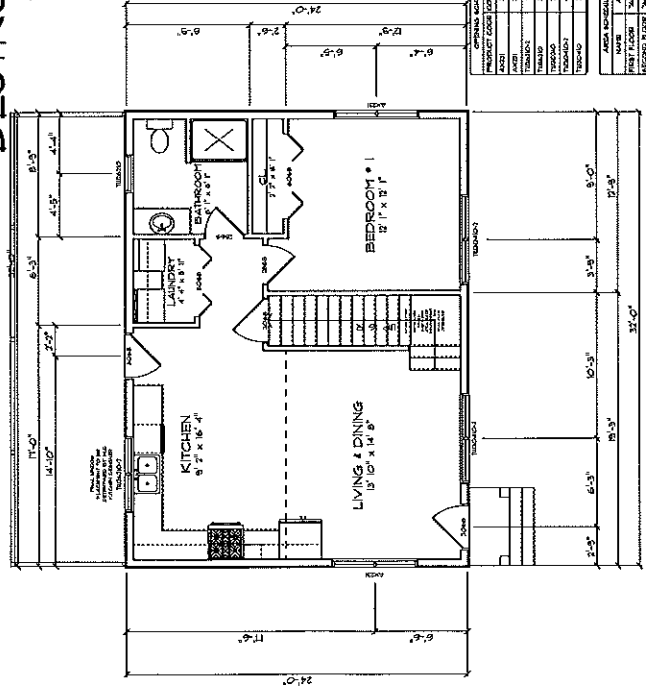


POST 10/13 CHANGES
 DESTROY ANY COPIES DATED
 BEFORE 11/2/2017

SPECIFY HEADERS:
 TYPICAL 2 BLY X10
 TO BE VERIFIED/SIZED BY CONTRACTOR,
 HOMEOWNER, OR STRUCTURAL ENGINEER

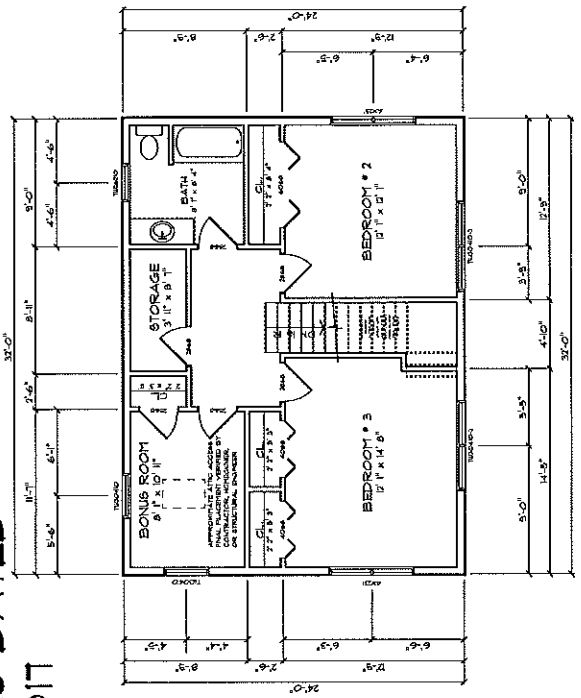
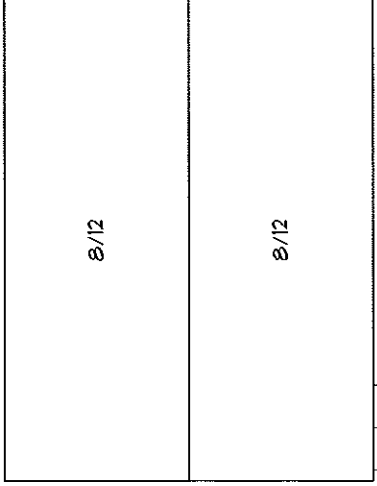


NO.	DESCRIPTION	QTY	UNIT
1	WOODEN DOOR (INTERIOR)	1	EA
2	WOODEN DOOR (EXTERIOR)	1	EA
3	WOODEN WINDOW (6" x 6")	1	EA
4	WOODEN WINDOW (12" x 12")	1	EA
5	WOODEN WINDOW (12" x 12")	1	EA
6	WOODEN WINDOW (12" x 12")	1	EA
7	WOODEN WINDOW (12" x 12")	1	EA
8	WOODEN WINDOW (12" x 12")	1	EA
9	WOODEN WINDOW (12" x 12")	1	EA
10	WOODEN WINDOW (12" x 12")	1	EA

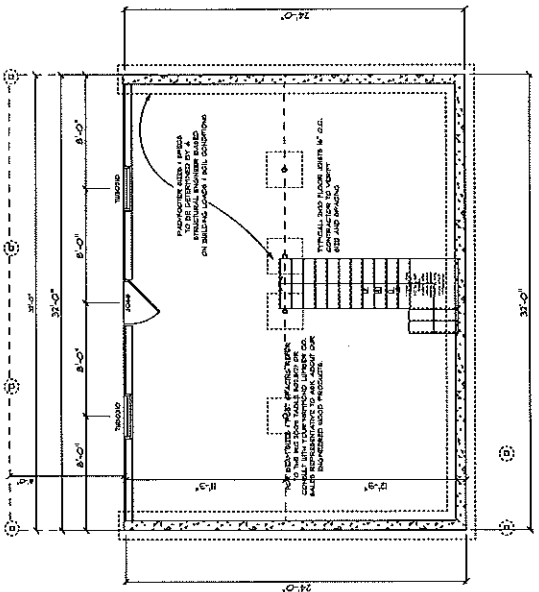
NO.	DESCRIPTION	QTY	UNIT
1	WOODEN WINDOW (6" x 6")	1	EA
2	WOODEN WINDOW (12" x 12")	1	EA
3	WOODEN WINDOW (12" x 12")	1	EA
4	WOODEN WINDOW (12" x 12")	1	EA
5	WOODEN WINDOW (12" x 12")	1	EA
6	WOODEN WINDOW (12" x 12")	1	EA
7	WOODEN WINDOW (12" x 12")	1	EA
8	WOODEN WINDOW (12" x 12")	1	EA
9	WOODEN WINDOW (12" x 12")	1	EA
10	WOODEN WINDOW (12" x 12")	1	EA

NO.	DESCRIPTION	QTY	UNIT
1	WOODEN WINDOW (6" x 6")	1	EA
2	WOODEN WINDOW (12" x 12")	1	EA
3	WOODEN WINDOW (12" x 12")	1	EA
4	WOODEN WINDOW (12" x 12")	1	EA
5	WOODEN WINDOW (12" x 12")	1	EA
6	WOODEN WINDOW (12" x 12")	1	EA
7	WOODEN WINDOW (12" x 12")	1	EA
8	WOODEN WINDOW (12" x 12")	1	EA
9	WOODEN WINDOW (12" x 12")	1	EA
10	WOODEN WINDOW (12" x 12")	1	EA

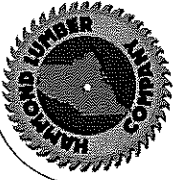
FIRST FLOOR
 SCALE: 1/4" = 1'-0"



SECOND FLOOR
 SCALE: 1/4" = 1'-0"



FOUNDATION
 SCALE: 1/4" = 1'-0"



NASSER ROHANI
 2432 2 STORY
 PORTLAND
 OUN



NO.	DESCRIPTION	QTY	UNIT
1	WOODEN WINDOW (6" x 6")	1	EA
2	WOODEN WINDOW (12" x 12")	1	EA
3	WOODEN WINDOW (12" x 12")	1	EA
4	WOODEN WINDOW (12" x 12")	1	EA
5	WOODEN WINDOW (12" x 12")	1	EA
6	WOODEN WINDOW (12" x 12")	1	EA
7	WOODEN WINDOW (12" x 12")	1	EA
8	WOODEN WINDOW (12" x 12")	1	EA
9	WOODEN WINDOW (12" x 12")	1	EA
10	WOODEN WINDOW (12" x 12")	1	EA

Hammond Lumber Company
 1414 E. 14th Avenue
 Portland, OR 97214
 Phone: 503-241-1111
 Fax: 503-241-1112