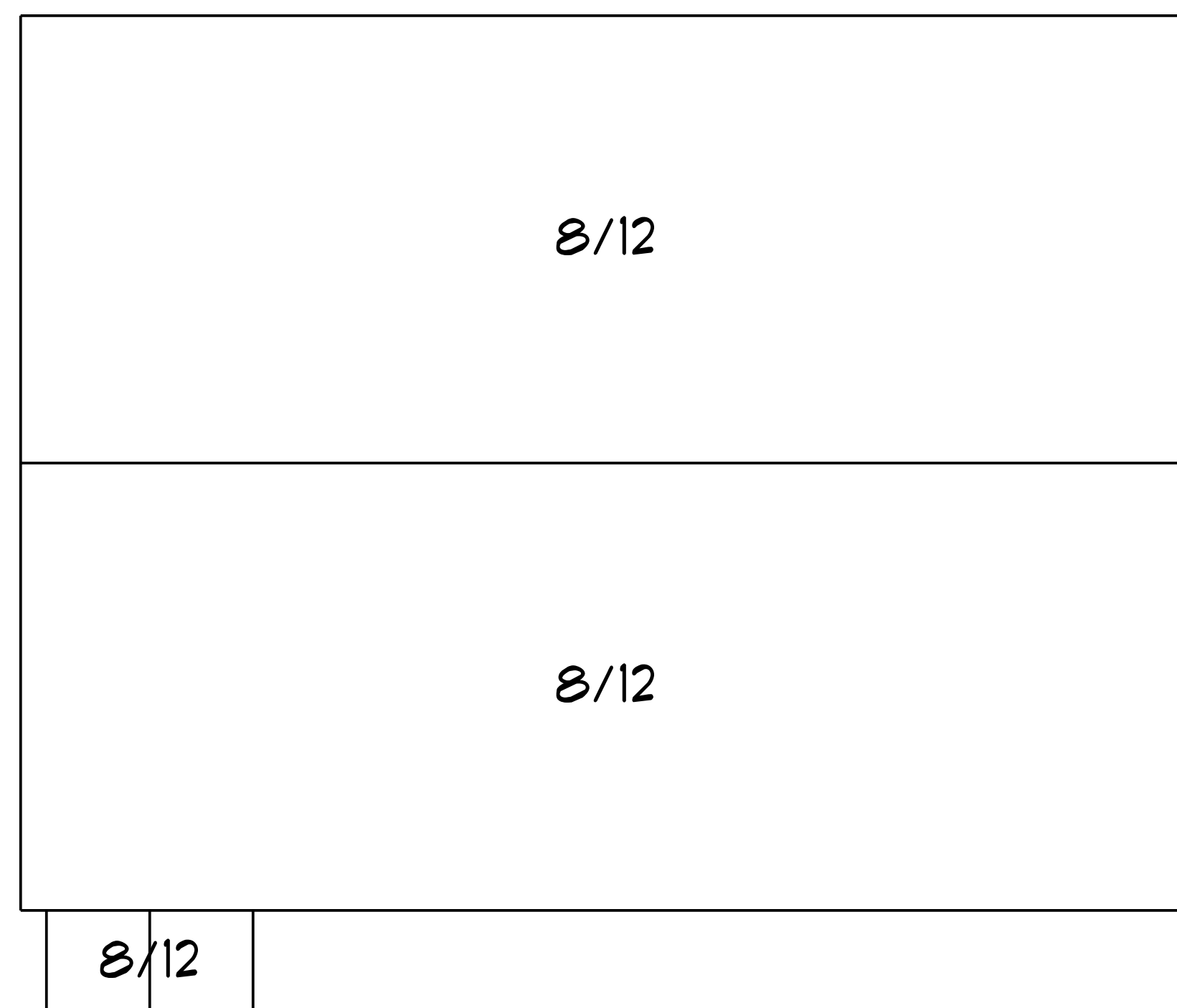


FIRST FLOOR
SCALE: 1/4" = 1'-0"



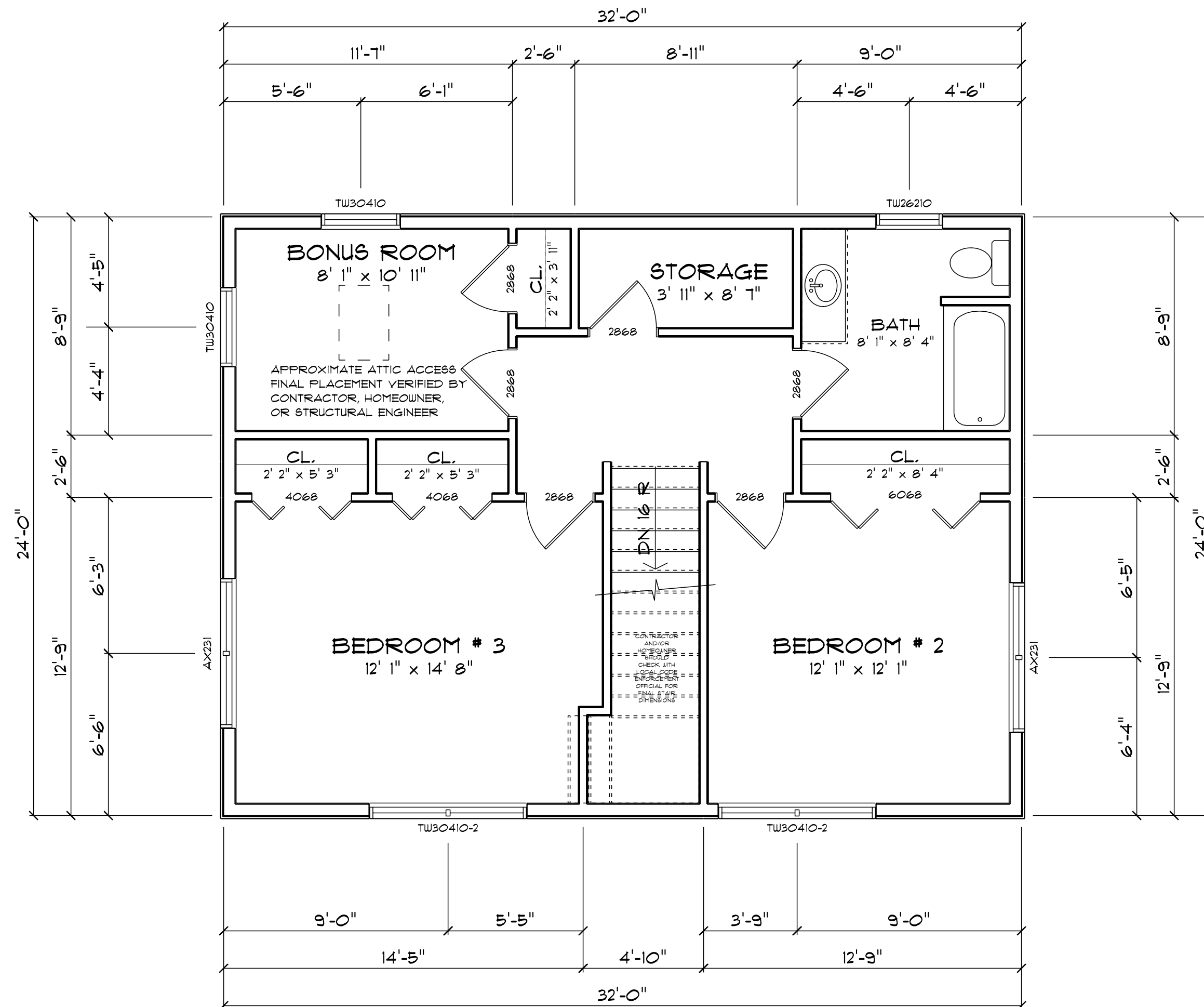
ROOF VIEW
SCALE: 1/4" = 1'-0"

SPECIFY HEADERS:
TYPICAL: 2 PLY 2X10
TO BE VERIFIED/SIZED BY CONTRACTOR,
HOMEOWNER, OR STRUCTURAL ENGINEER

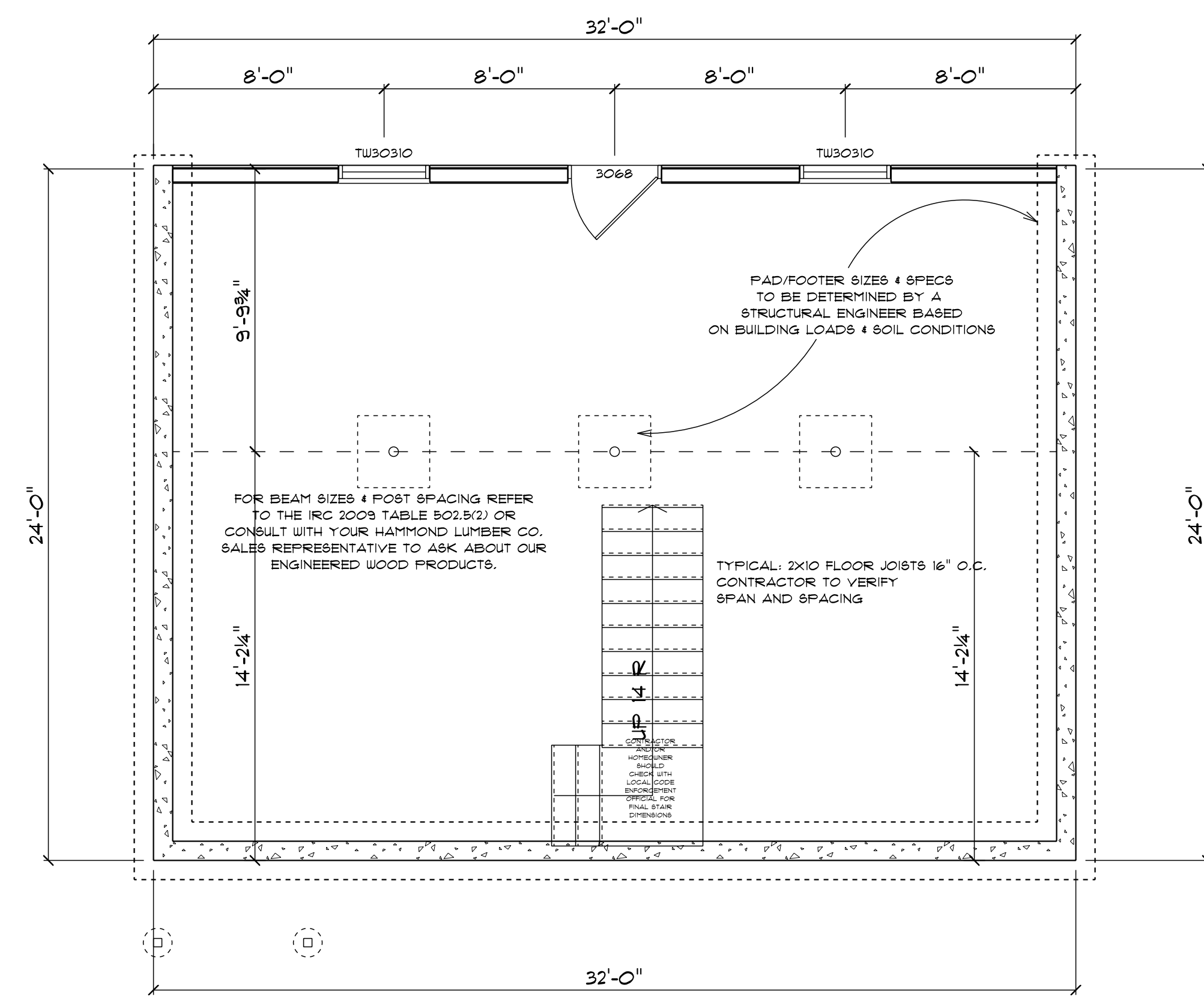
OPENING SCHEDULE		
PRODUCT CODE	COUNT	EGRESS
AX231	2	No
AX231	2	No
TU26210-2	1	No
TU26210	2	No
TU30310	2	No
TU30410-2	4	Yes
TU30410	2	Yes

AREA SCHEDULE	
NAME	AREA
FIRST FLOOR	768 sq. ft.
SECOND FLOOR	768 sq. ft.

REVISION SCHEDULE		
NUMBER	DATE	REVISION NOTE
1	4/25/2011	PREVIOUS CHANGES
2	4/25/2011	ADDED DAYLIGHT
2	4/25/2011	MODIFIED KITCHEN
2	4/25/2011	ADDED BACK DECK AND DOOR



SECOND FLOOR
SCALE: 1/4" = 1'-0"



FOUNDATION
SCALE: 1/4" = 1'-0"

DRAWINGS ARE PROVIDED BY HAMMOND LUMBER COMPANY AS A SERVICE TO OUR CUSTOMERS. THE INFORMATION PRESENTED IN THESE DRAWINGS IS NOT PREPARED OR REVIEWED BY A REGISTERED ARCHITECT OR ENGINEER. HAMMOND LUMBER COMPANY SUGGESTS THAT ITS CUSTOMERS SEEK THE SERVICES OF A REGISTERED ARCHITECT TO OBTAIN TECHNICAL ADVICE AND THAT SUCH ADVICE BE USED AS A BASIS FOR CONSTRUCTION AND THAT HAMMOND LUMBER COMPANY DISCLAIMS ANY RESPONSIBILITY IF THEY ARE SO USED.

DATE	2/17/2011
BY	MR
DATE	3/9/2011
BY	MR
DATE	4/26/2011
BY	MR
DATE	8/17/2011
BY	MR

ABB Wednesday, August 23, 2011
MRF SCALE: AS NOTED
FOR 1 OF 3
DRAWING: RNT0235

NASSER ROHANI
24x32 2 STORY
OWN
PORTLAND





FRONT ELEVATION
SCALE: 1/4" = 1'-0"



LEFT ELEVATION
SCALE: 1/4" = 1'-0"



RIGHT ELEVATION
SCALE: 1/4" = 1'-0"

SPECIFY HEADERS:

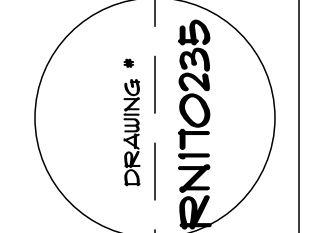
TYPICAL: 2 FLY 2X10
TO BE VERIFIED/SIZED BY CONTRACTOR,
HOMEOWNER, OR STRUCTURAL ENGINEER



REAR ELEVATION
SCALE: 1/4" = 1'-0"

DRAWINGS ARE PROVIDED BY HAMMOND LUMBER COMPANY AS A SERVICE TO OUR CUSTOMERS. THESE DRAWINGS ARE FOR ILLUSTRATIVE PURPOSES ONLY. THE INFORMATION PRESENTED IN THESE DRAWINGS IS NOT PREPARED OR REVIEWED BY A REGISTERED PROFESSIONAL ENGINEER OR ARCHITECT. HAMMOND LUMBER COMPANY SUGGESTS THAT ITS CUSTOMERS SEEK THE SERVICES OF A REGISTERED ARCHITECT TO OBTAIN TECHNICAL ADVICE AND TO OBTAIN PERMITS. HAMMOND LUMBER COMPANY DISCLAIMS ANY RESPONSIBILITY IF THEY ARE SO USED.

DATE	2/17/2011		
BY	MRF	SCALE	AS NOTED
FOR	FOR	SHEET	2 OF 3



NASSER ROHANI
24x32 2 STORY
OWN
FORTLAND



DRAWINGS ARE PROVIDED BY HAMMOND LUMBER COMPANY AS A GENERAL ILLUSTRATION FOR INFORMATIONAL PURPOSES ONLY. THE INFORMATION PRESENTED IN THESE DRAWINGS IS NOT PREPARED OR REVIEWED BY A REGISTERED PROFESSIONAL ENGINEER OR ARCHITECT. HAMMOND LUMBER COMPANY SUGGESTS THAT ITS CUSTOMERS SEEK THE SERVICES OF A REGISTERED ARCHITECT TO OBTAIN TECHNICAL ASSISTANCE AND THAT SUCH ARCHITECTS BE AWARE OF THE LIMITED SCOPE OF THESE DRAWINGS. HAMMOND LUMBER COMPANY DISCLAIMS ANY RESPONSIBILITY IF THEY ARE SO USED.

DATE	DESCRIPTION
8/17/2011	ISSUED FOR PERMIT
5/18/2011	REVISED
4/26/2011	REVISED
4/26/2011	REVISED

ABB	Wednesday, August 23, 2011	2/17/2011
MRF	SCALE: AS NOTED	3
FOR	3	OF

DRAWING: RNT0235

FORTLAND

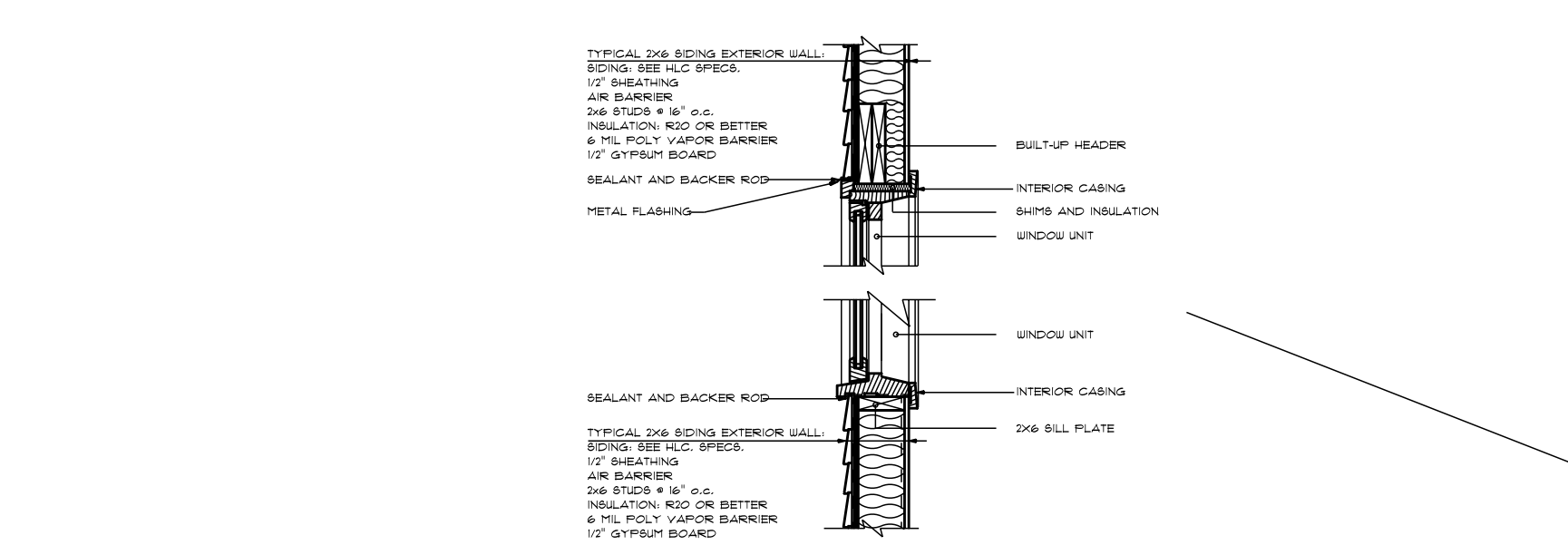
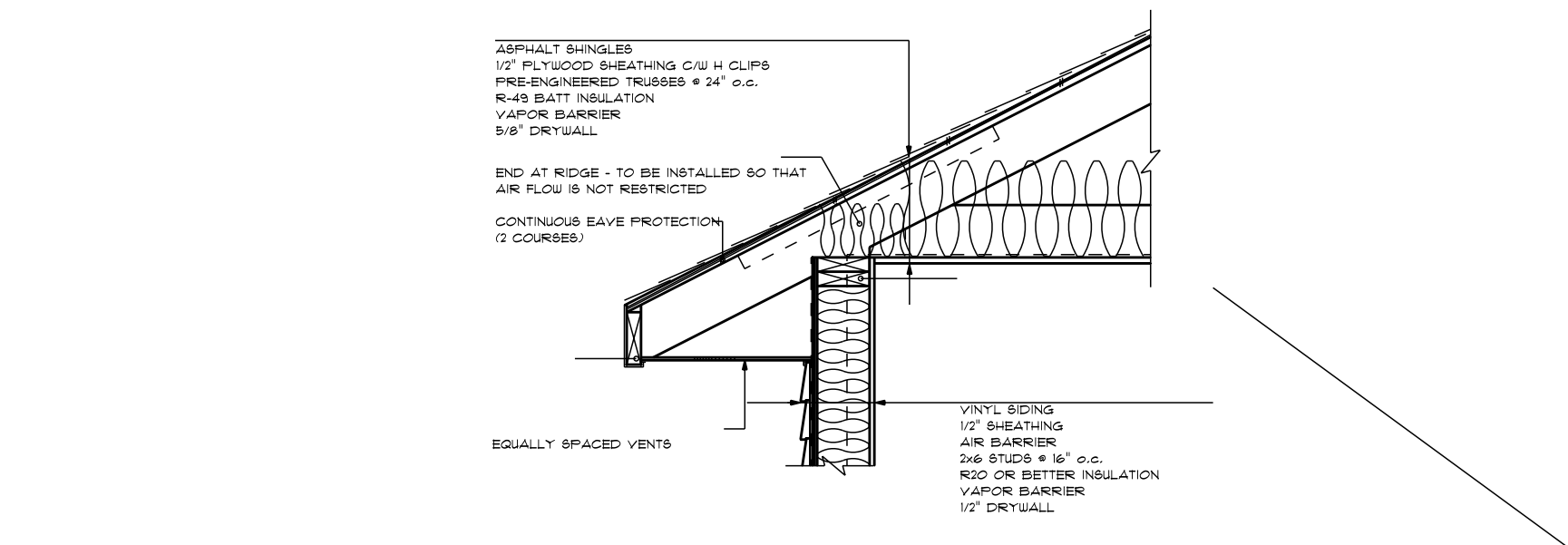
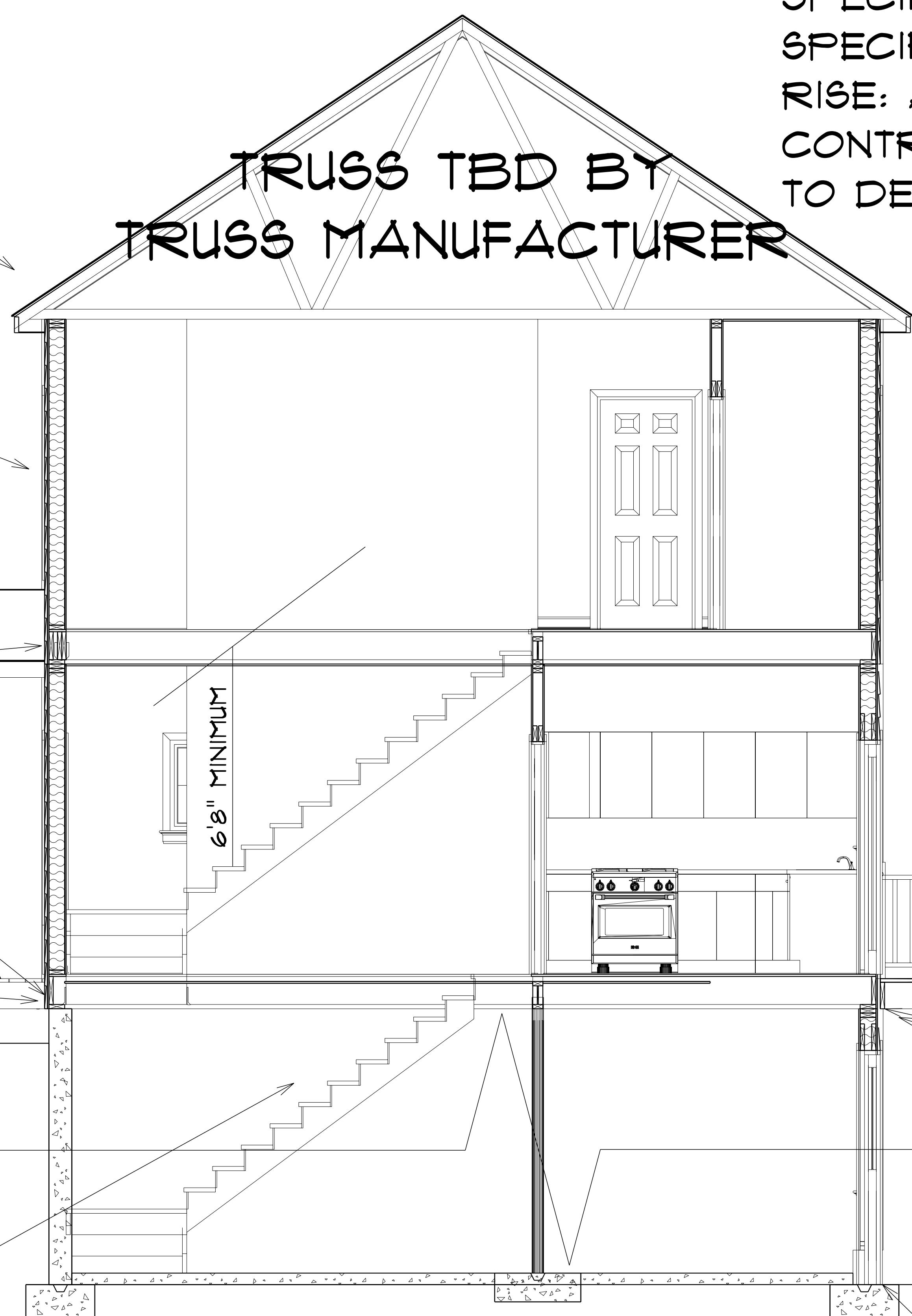
NASSER ROHANI
 24x32 2 STORY

OWN

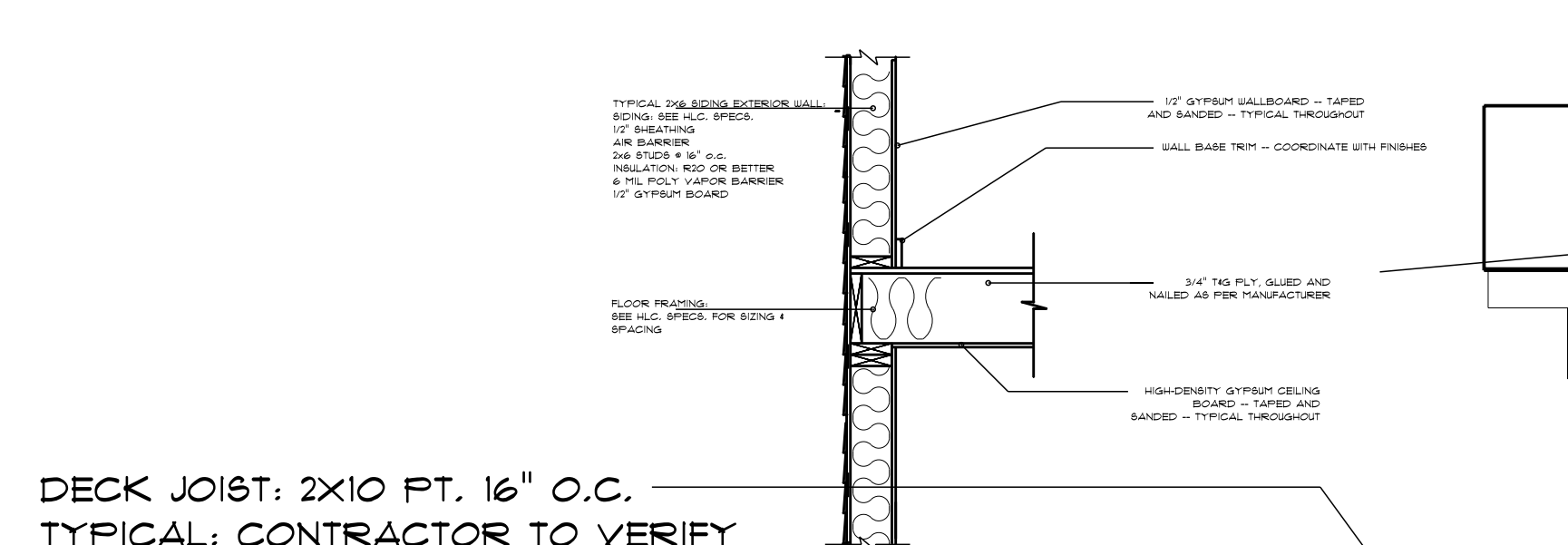


SPECIFY TREAD: APPROXIMATELY 7.5"
SPECIFY RISER: APPROXIMATELY 10"
RISE: APPROXIMATELY 9' 10.75"
CONTRACTOR, AND OR HOMEOWNER
TO DETERMINE FINAL DIMENSIONS OF STAIRS
SPECIFY HEADERS:
TYPICAL: 2 PLY 2X10
TO BE VERIFIED/SIZED BY CONTRACTOR,
HOMEOWNER, OR STRUCTURAL ENGINEER

TRUSS TBD BY
TRUSS MANUFACTURER

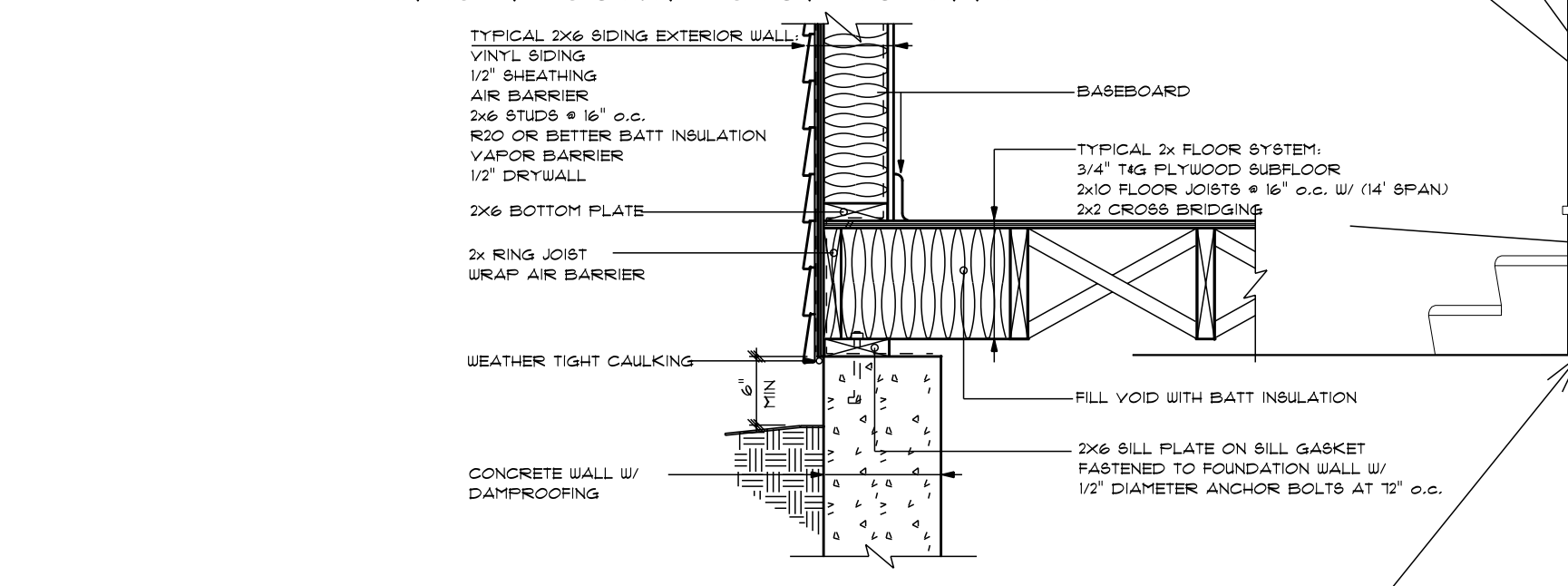


2X6/SIDING HEADER 4 SILL
 REFER TO IRC 2009 FOR CODE REQUIREMENTS.

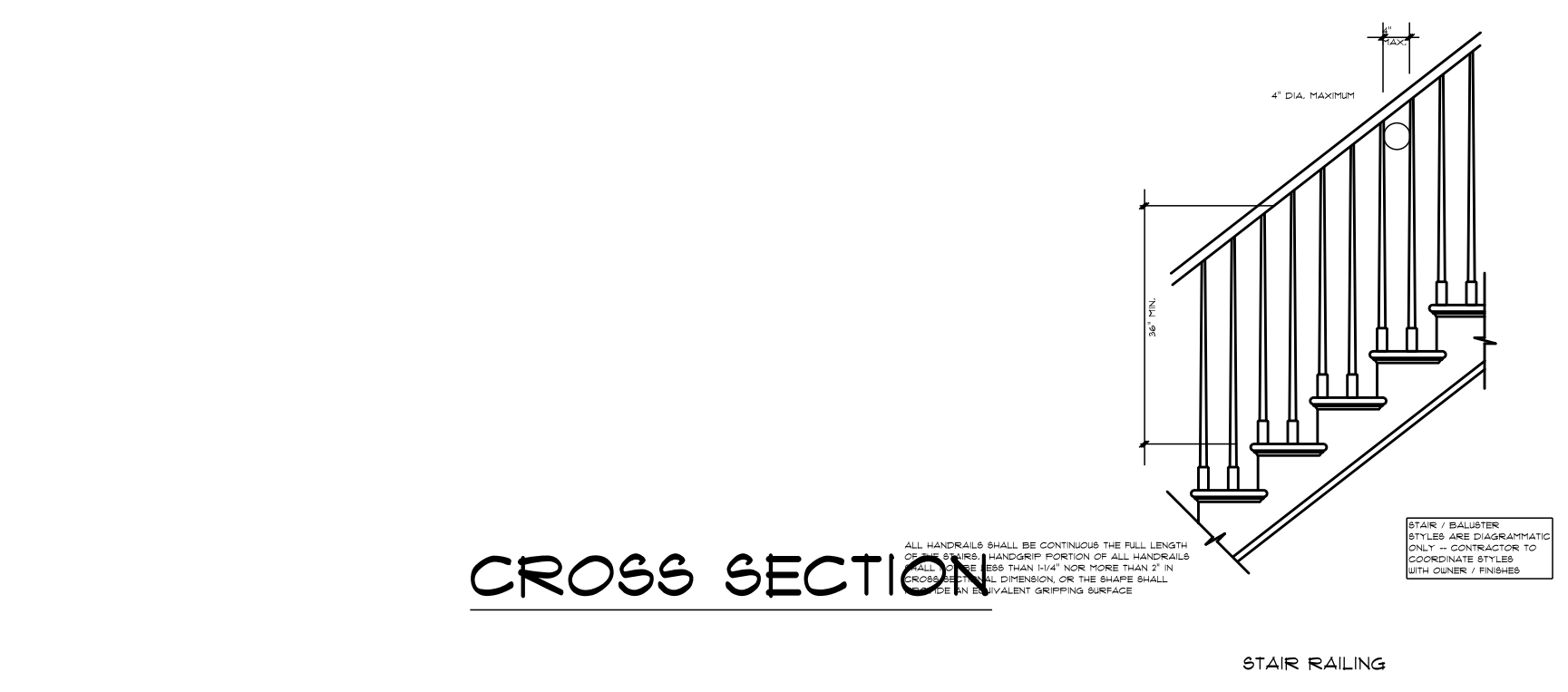


**DECK JOIST: 2X10 FT. 16\"/>
 TYPICAL: CONTRACTOR TO VERIFY**

2X6/SIDING, FLOOR FRAMING
 REFER TO IRC 2009 FOR CODE REQUIREMENTS.
PRESSURE TREATED LEDGER
2X10 FT.
TYPICAL: CONTRACTOR TO VERIFY

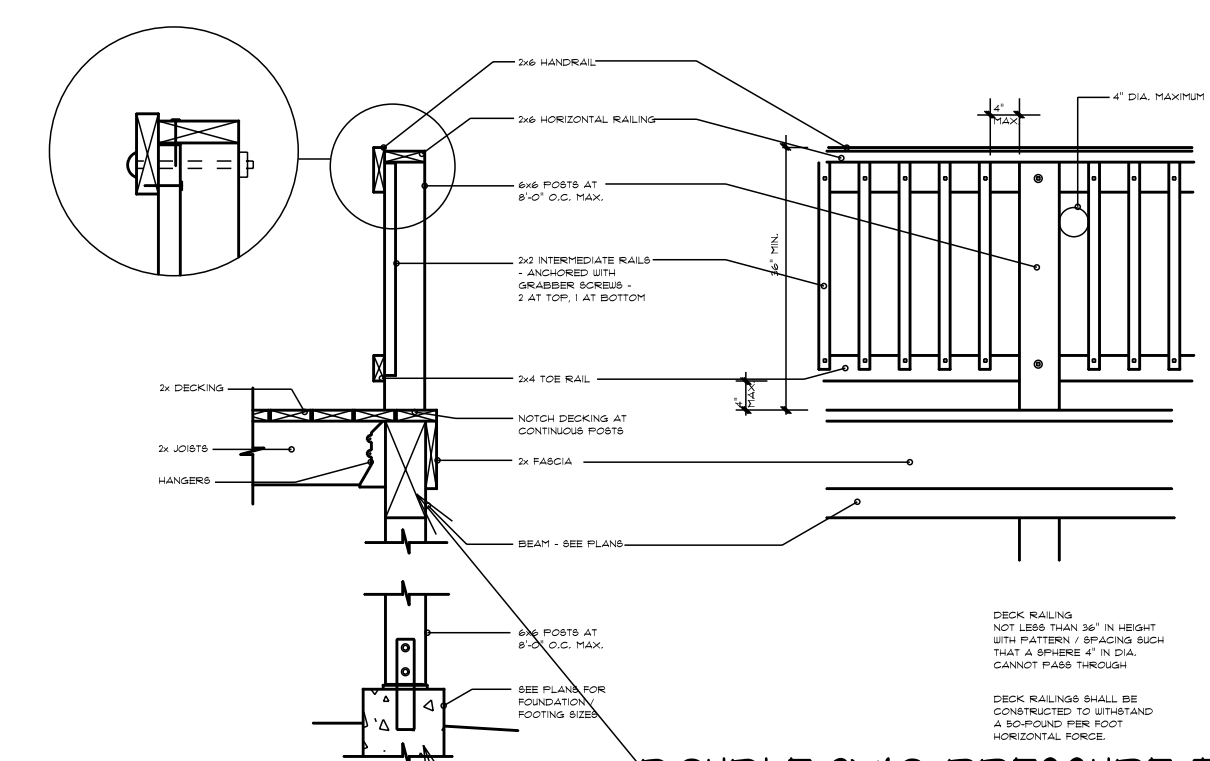


**TYPICAL: 10\"/>
 FINAL SIZE SPECIFIED BY CONTRACTOR**



CROSS SECTION

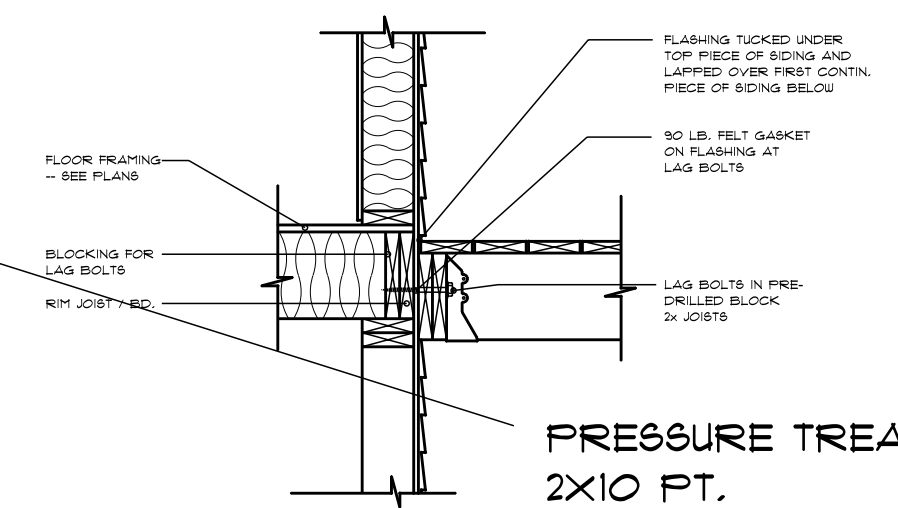
TYPICAL - NOT TO SCALE
 HAMMOND LUMBER COMPANY HAS SUPPLIED THIS DRAWING FOR ILLUSTRATIVE AND INFORMATIONAL PURPOSES ONLY. THE HOMEOWNER/CONTRACTOR IS RESPONSIBLE FOR ENSURING THAT THE MATERIALS CHOSEN WILL COMPLY WITH LOCAL BUILDING CODES AND/OR STANDARD BUILDING PRACTICES. HAMMOND LUMBER COMPANY SUGGESTS THAT ISN'T CUSTOMERS SEEK THE ASSISTANCE OF A REGISTERED ENGINEER OR ARCHITECT IF FURTHER INFORMATION IS NEEDED. THIS DRAWING IS NOT INTENDED TO BE USED AS A BASIS FOR CONSTRUCTION AND HAMMOND LUMBER COMPANY DISCLAIMS ANY RESPONSIBILITY IF THEY ARE SO USED.



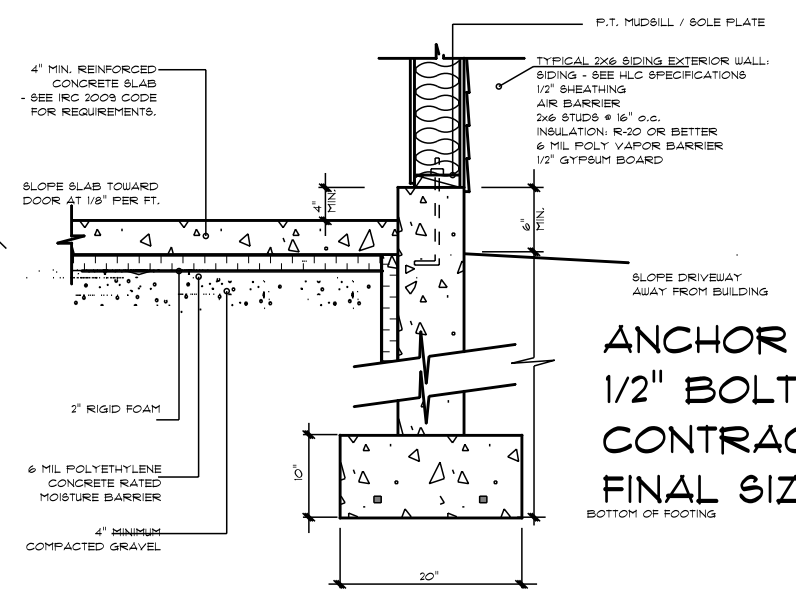
DOUBLE 2X10 PRESSURE TREATED ON 6X6 PT POST
CONTRACTOR TO VERIFY

**TYPICAL: 10\"/>
 FINAL SIZE SPECIFIED BY CONTRACTOR**

**DECK JOIST: 2X10 FT. 16\"/>
 TYPICAL: CONTRACTOR TO VERIFY**



PRESSURE TREATED LEDGER
2X10 FT.
TYPICAL: CONTRACTOR TO VERIFY



ANCHOR BOLT: TYPICAL
**1/2\"/>
 CONTRACTOR TO DETERMINE**
FINAL SIZE/SPACING ON SITE

POURED CONCRETE FOOTING AT GARAGE
 REFER TO IRC 2009 FOR CODE REQUIREMENTS.