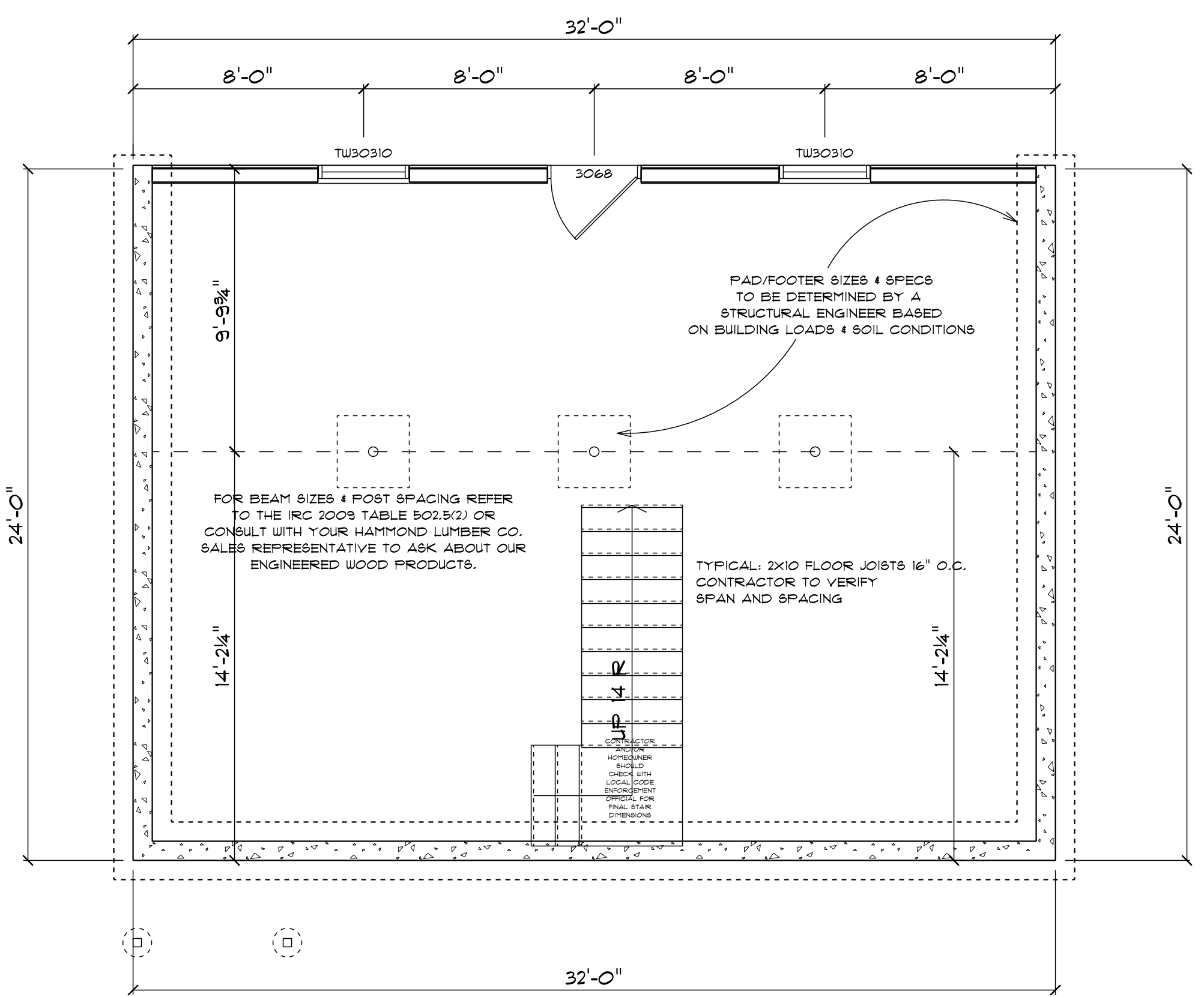
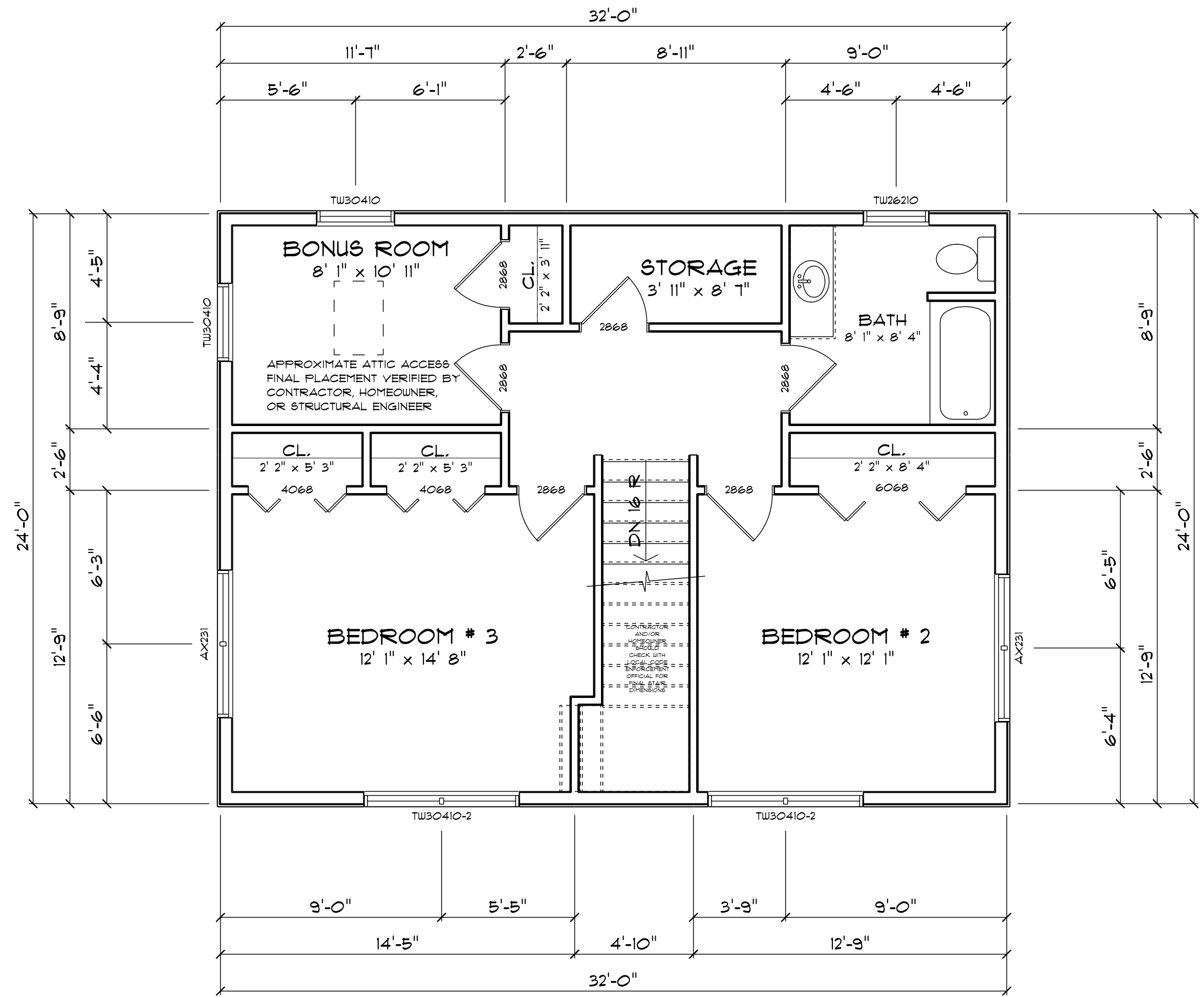
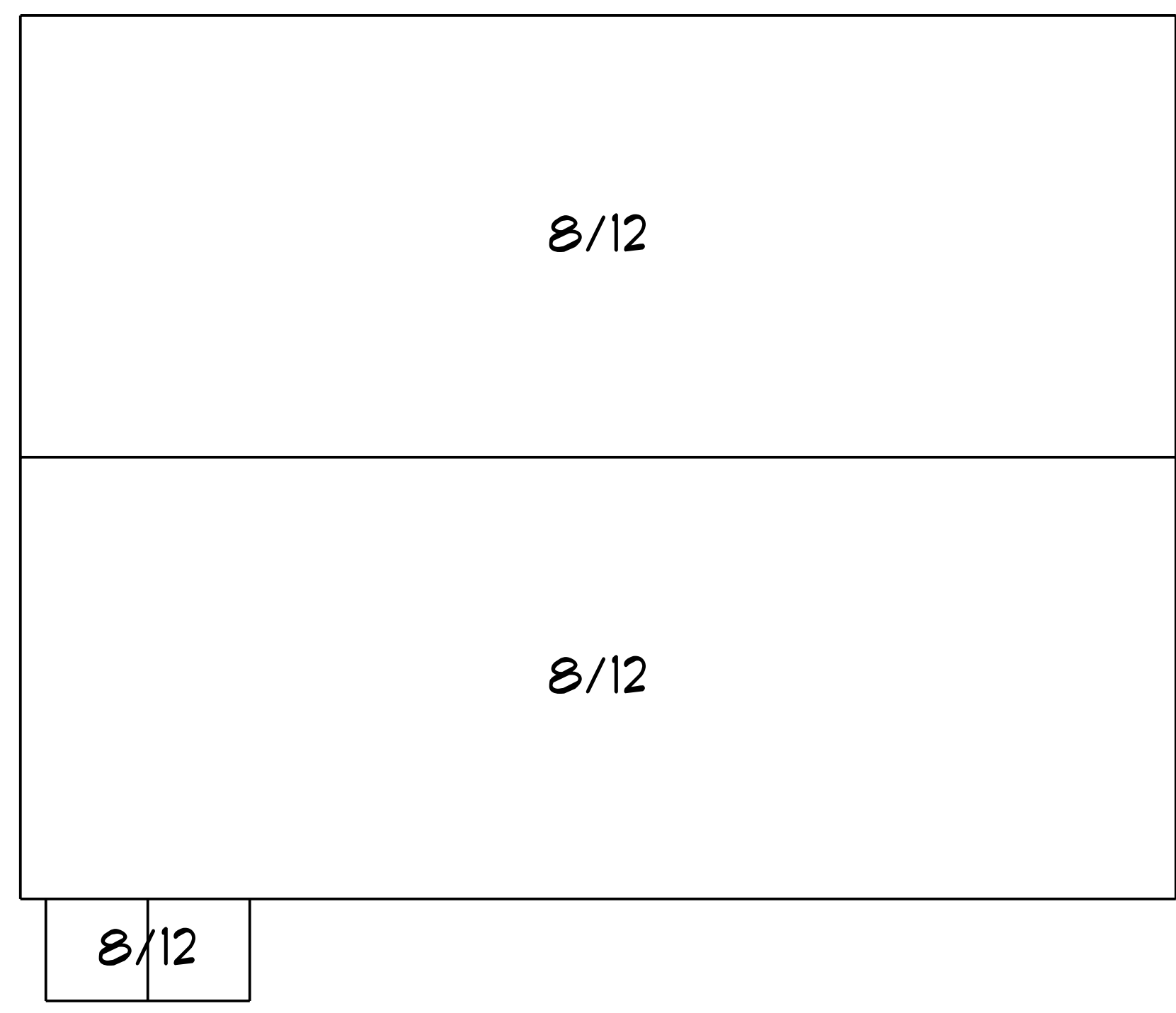


SPECIFY HEADERS:
TYPICAL: 2 PLY 2X10
TO BE VERIFIED/SIZED BY CONTRACTOR,
HOMEOWNER, OR STRUCTURAL ENGINEER

PRODUCT CODE	COUNT	EGRESS
AX231	2	No
AX231	2	No
TU26210-2	1	No
TU26210	2	No
TU30310	2	No
TU30410-2	4	Yes
TU30410	2	Yes

NAME	AREA
FIRST FLOOR	768 sq. ft.
SECOND FLOOR	768 sq. ft.

NUMBER	DATE	REVISION NOTE
1	4/25/2011	PREVIOUS CHANGES
2	4/25/2011	ADDED DAYLIGHT
2	4/25/2011	MODIFIED KITCHEN
2	4/25/2011	ADDED BACK DECK AND DOOR



Hammond Lumber Company
www.hammondlumber.com
toll free 1-866-HAMMOND

DRAWINGS ARE PROVIDED BY HAMMOND LUMBER COMPANY AS A SERVICE TO OUR CUSTOMERS. THESE DRAWINGS ARE FOR ILLUSTRATIVE PURPOSES ONLY. THE INFORMATION PRESENTED IN THESE DRAWINGS IS NOT PREPARED OR REVIEWED BY A REGISTERED PROFESSIONAL ENGINEER. HAMMOND LUMBER COMPANY SUGGESTS THAT ITS CUSTOMERS SEEK THE SERVICES OF A REGISTERED ARCHITECT TO OBTAIN TECHNICAL ADVICE. DRAWINGS ARE NOT TO BE USED AS A BASIS FOR CONSTRUCTION AND HAMMOND LUMBER COMPANY DISCLAIMS ANY RESPONSIBILITY IF THEY ARE SO USED.

DATE	BY	REVISION
2/17/2011		
3/9/2011		
4/26/2011		
8/17/2011		

ABB Monday, August 21, 2011
MRF SCALE: AS NOTED
FOR 1 OF 3
DRAWING: RNT0235

FORTLAND

NASSER ROHANI
24x32 2 STORY

OUN



FRONT ELEVATION
SCALE: 1/4" = 1'-0"



LEFT ELEVATION
SCALE: 1/4" = 1'-0"



RIGHT ELEVATION
SCALE: 1/4" = 1'-0"



REAR ELEVATION
SCALE: 1/4" = 1'-0"

DRAWINGS ARE PROVIDED BY HAMMOND LUMBER COMPANY AS A SERVICE TO OUR CUSTOMERS. THE INFORMATION PRESENTED IN THESE DRAWINGS IS NOT PREPARED OR REVIEWED BY A REGISTERED ARCHITECT OR ENGINEER. HAMMOND LUMBER COMPANY SUGGESTS THAT ITS CUSTOMERS SEEK THE SERVICES OF A REGISTERED ARCHITECT TO OBTAIN TECHNICAL ADVICE AND THAT CUSTOMERS OBTAINING THESE DRAWINGS FOR CONSTRUCTION AND HAMMOND LUMBER COMPANY DISCLAIMS ANY RESPONSIBILITY IF THEY ARE SO USED.

DATE	2/17/2011	
BY	MRF	SCALE: AS NOTED
CHECKED	FOR	2 OF 3
DATE	8/17/2011	

ABB Monday, August 21, 2011
MRF
FOR 2 OF 3
DRAWING
RNT0235

NASSER ROHANI
24x32 2 STORY
OWN
FORTLAND



DRAWINGS ARE PROVIDED BY HAMMOND LUMBER COMPANY AS AN ILLUSTRATIVE PURPOSE ONLY. THE INFORMATION PRESENTED IN THESE DRAWINGS IS NOT PREPARED OR REVIEWED BY A REGISTERED ENGINEER OR ARCHITECT. HAMMOND LUMBER COMPANY SUGGESTS THAT ITS CUSTOMERS SEEK THE SERVICES OF A REGISTERED ARCHITECT TO OBTAIN TECHNICAL ADVICE. DRAWINGS ARE NOT TO BE USED AS A BASIS FOR CONSTRUCTION AND HAMMOND LUMBER COMPANY DISCLAIMS ANY RESPONSIBILITY IF THEY ARE SO USED.

PROJECT:	2/17/2011	DATE:	8/17/2011
CLIENT:	Monday August 21, 2011	SCALE:	AS NOTED
DATE:	2/18/2011	SCALE:	AS NOTED
DATE:	4/26/2011	SCALE:	AS NOTED
DATE:	4/26/2011	SCALE:	AS NOTED
DATE:	4/26/2011	SCALE:	AS NOTED
DATE:	4/26/2011	SCALE:	AS NOTED
DATE:	4/26/2011	SCALE:	AS NOTED
DATE:	4/26/2011	SCALE:	AS NOTED
DATE:	4/26/2011	SCALE:	AS NOTED
DATE:	4/26/2011	SCALE:	AS NOTED
DATE:	4/26/2011	SCALE:	AS NOTED
DATE:	4/26/2011	SCALE:	AS NOTED

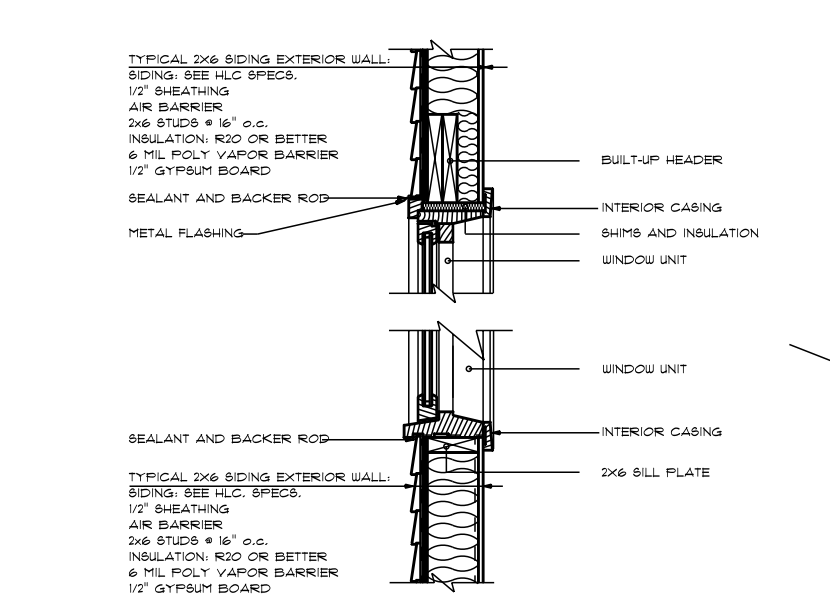
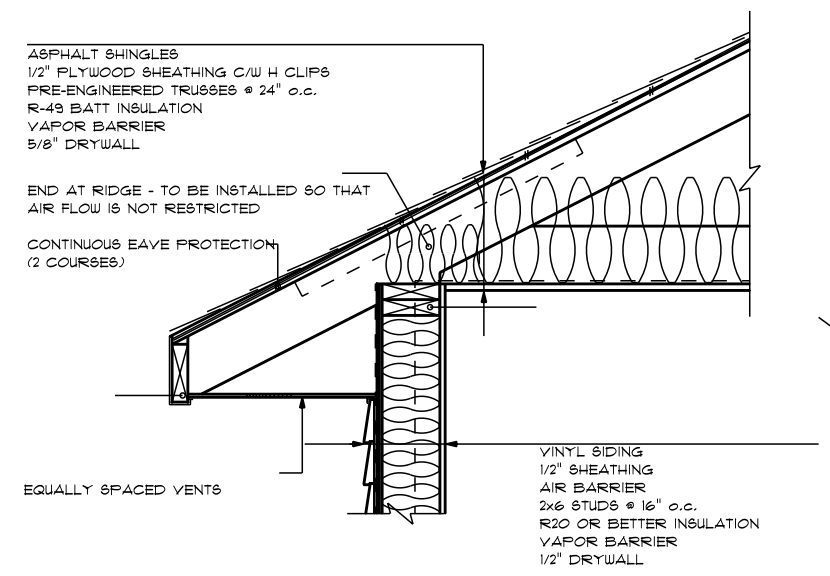
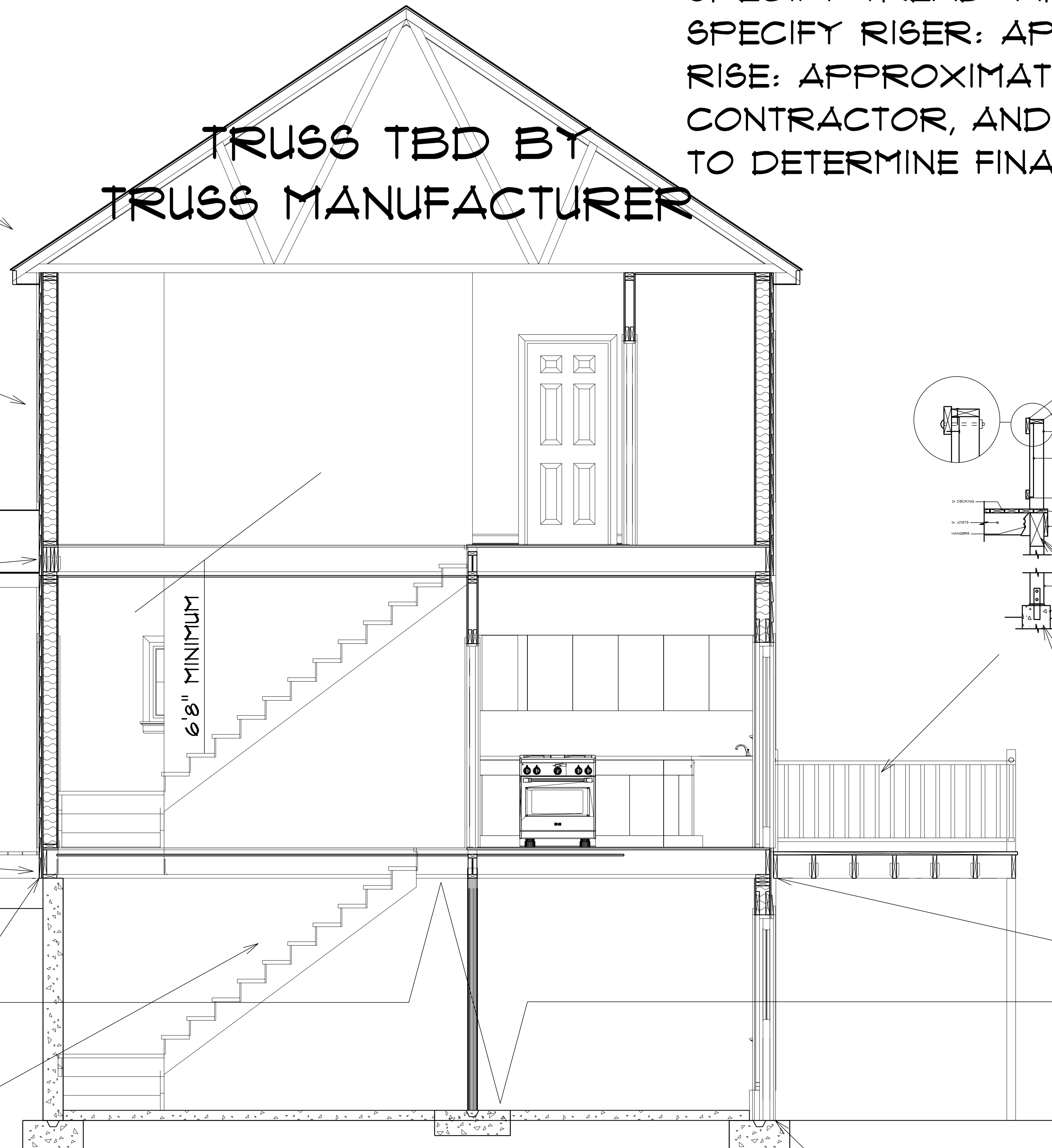
ABB Monday August 21, 2011
 MRF SCALE: AS NOTED
 FOR 3 OF 3
 DRAWING: RNT0235

NASSER ROHANI
 24x32 2 STORY
 PORTLAND
 OWN

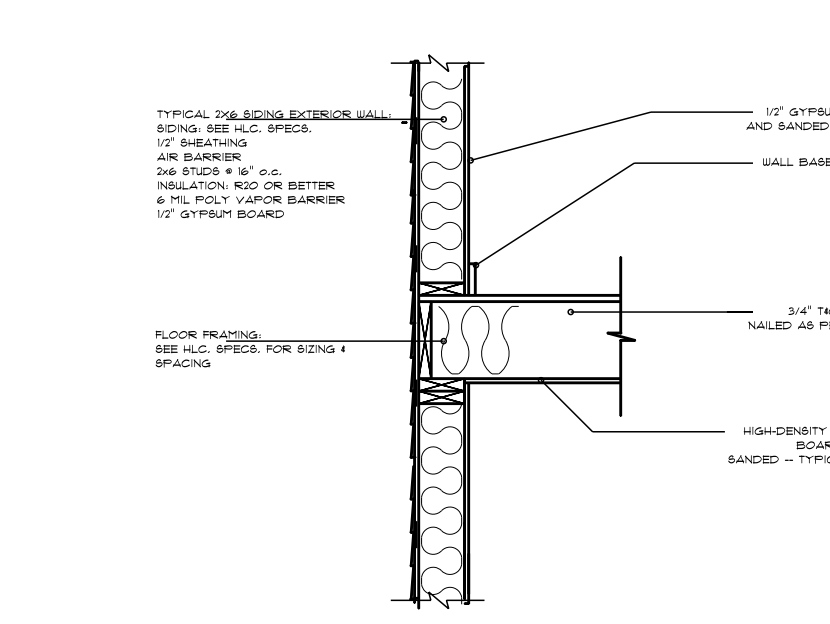


SPECIFY TREAD: APPROXIMATELY 7.5"
SPECIFY RISER: APPROXIMATELY 10"
RISE: APPROXIMATELY 9' 10.75"
CONTRACTOR, AND OR HOMEOWNER
TO DETERMINE FINAL DIMENSIONS OF STAIRS

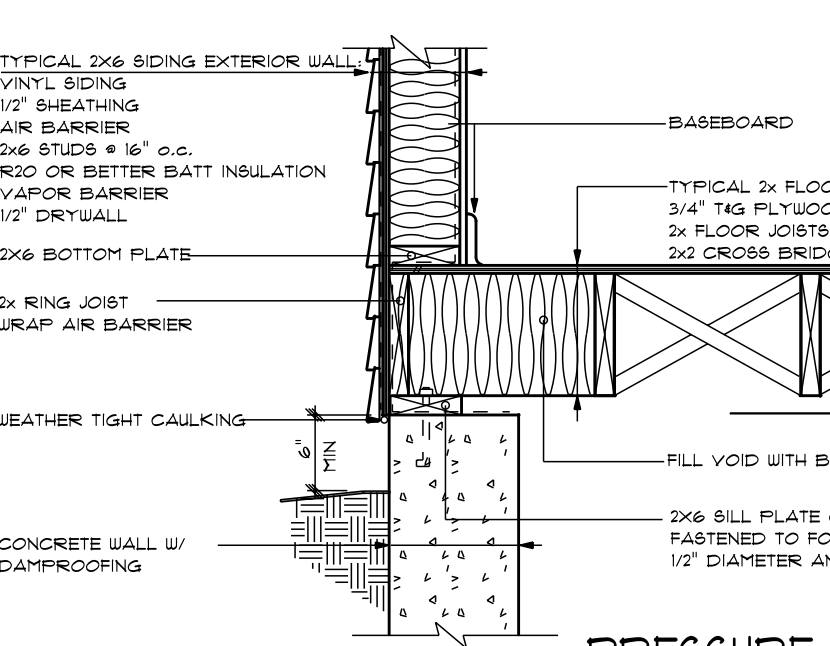
TRUSS TBD BY TRUSS MANUFACTURER



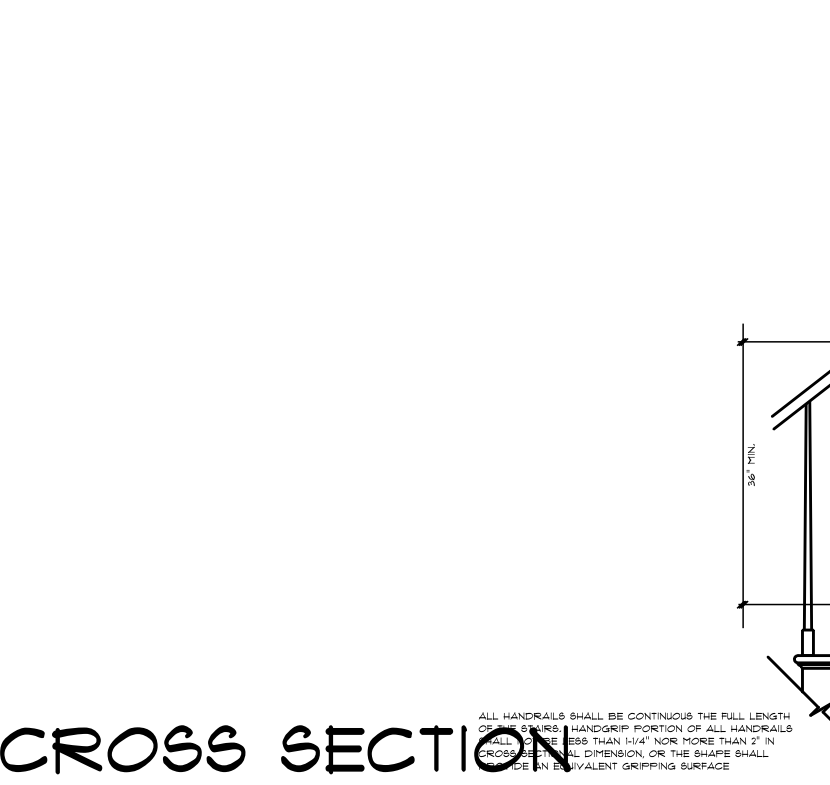
2X6/SIDING HEADER 4 SILL
 REFER TO IRC 2009 FOR CODE REQUIREMENTS.



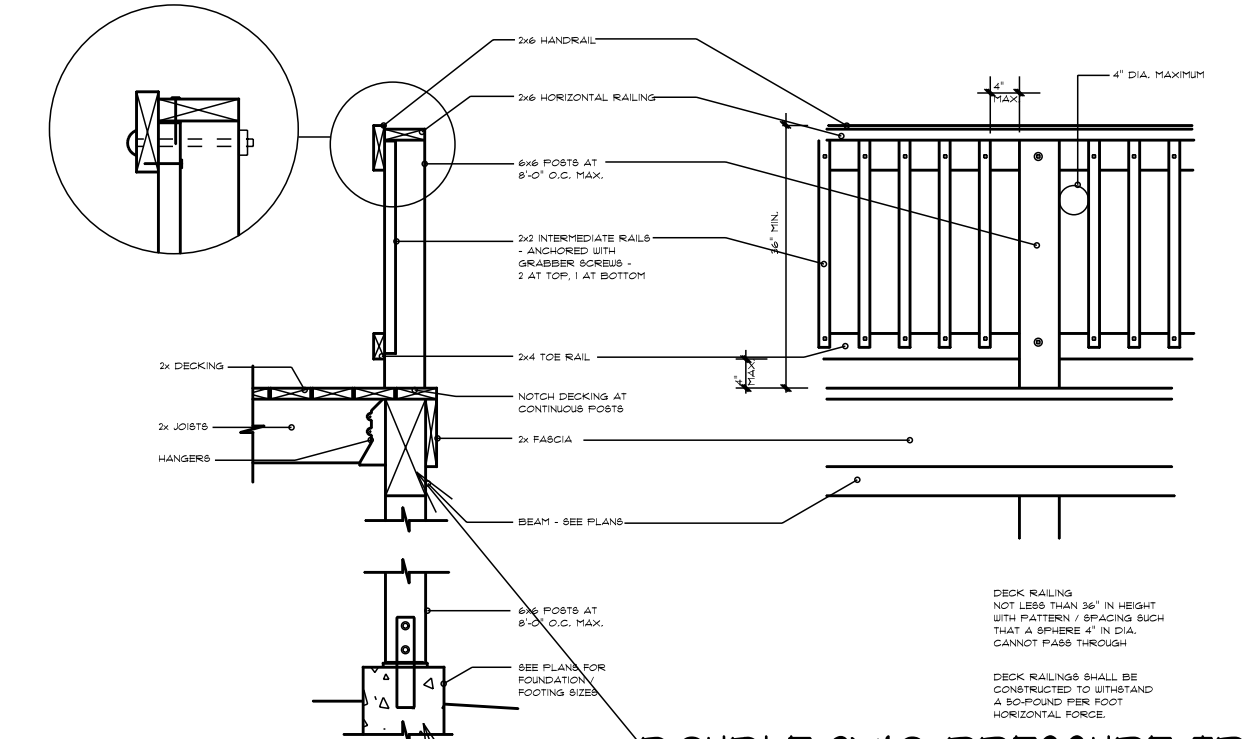
2X6/SIDING, FLOOR FRAMING
 REFER TO IRC 2009 FOR CODE REQUIREMENTS.



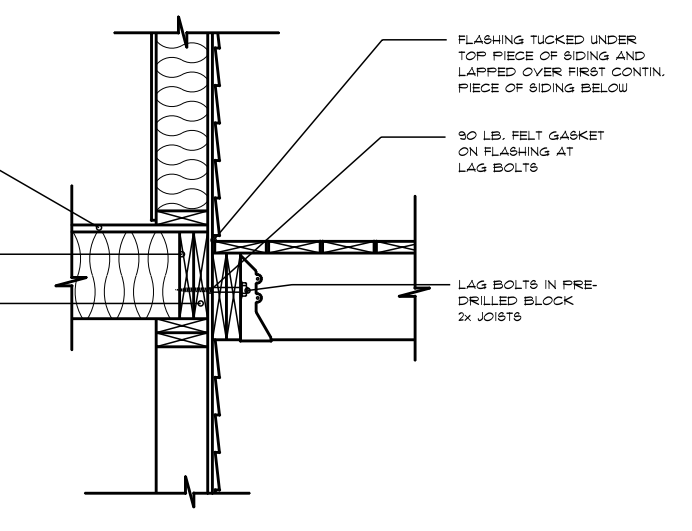
PRESSURE TREATED LEDGER TYPICAL



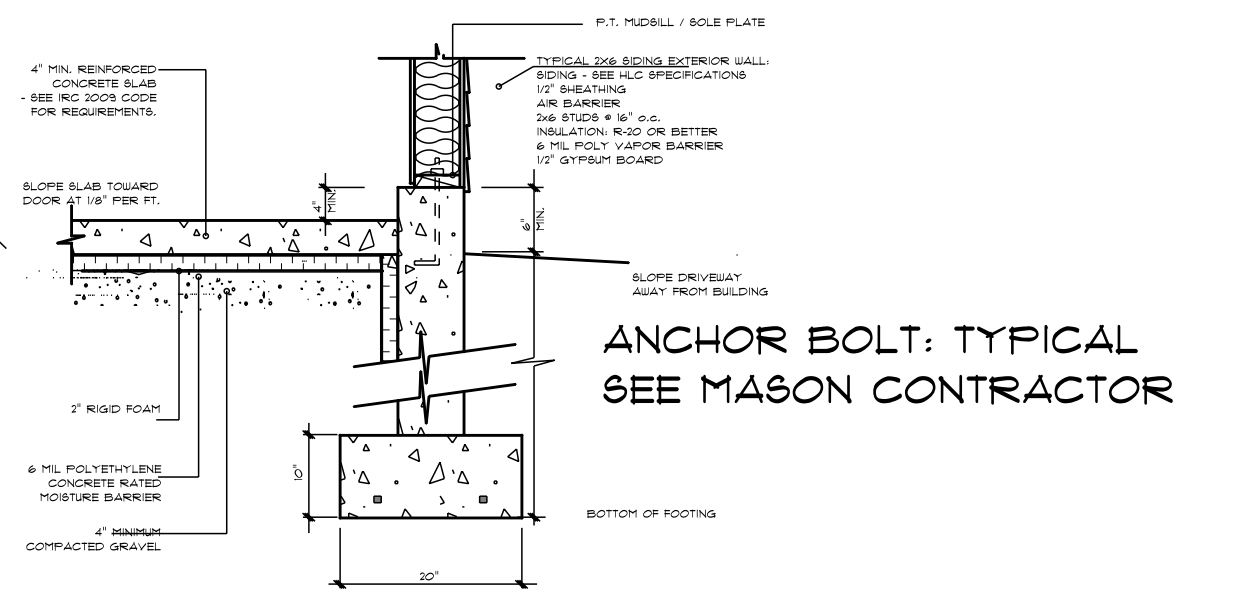
STAIR RAILING



DOUBLE 2X10 PRESSURE TREATED ON 6X6 PT POST CONTRACTOR TO VERIFY
DECK AND RAILING
TYPICAL: 10\"/>



DECK LEDGER CONNECTION



POURED CONCRETE FOOTING AT GARAGE
 REFER TO IRC 2009 FOR CODE REQUIREMENTS.

TYPICAL - NOT TO SCALE
 HAMMOND LUMBER COMPANY HAS SUPPLIED THIS DRAWING FOR ILLUSTRATIVE AND INFORMATIONAL PURPOSES ONLY. THE HOMEOWNER/CONTRACTOR IS RESPONSIBLE FOR ENSURING THAT THE MATERIALS CHOSEN WILL COMPLY WITH LOCAL BUILDING CODES AND/OR STANDARD BUILDING PRACTICES. HAMMOND LUMBER COMPANY SUGGESTS THAT ITS CUSTOMERS SEEK THE ASSISTANCE OF A REGISTERED ENGINEER OR ARCHITECT IF FURTHER INFORMATION IS NEEDED. THIS DRAWING IS NOT INTENDED TO BE USED AS A BASIS FOR CONSTRUCTION AND HAMMOND LUMBER COMPANY DISCLAIMS ANY RESPONSIBILITY IF THEY ARE SO USED.

CROSS SECTION