

DRAWINGS ARE PROVIDED BY HAMMOND LUMBER COMPANY AS AN ILLUSTRATIVE PURPOSE ONLY. THE INFORMATION PRESENTED IN THESE DRAWINGS IS NOT PREPARED BY A REGISTERED ENGINEER OR ARCHITECT. HAMMOND LUMBER COMPANY SUGGESTS THAT ITS CUSTOMERS SEEK THE SERVICES OF A REGISTERED ARCHITECT TO OBTAIN TECHNICAL ADVICE. HAMMOND LUMBER COMPANY DISCLAIMS ANY RESPONSIBILITY IF THESE DRAWINGS ARE NOT USED AS A BASIS FOR CONSTRUCTION AND HAMMOND LUMBER COMPANY DISCLAIMS ANY RESPONSIBILITY IF THEY ARE SO USED.

DATE	DESCRIPTION
7/17/2011	ISSUED
7/19/2011	REVISED
7/26/2011	REVISED
8/17/2011	REVISED

ABB	Wednesday, August 2, 2011	SCALE: AS NOTED	3
MRF			
FOR			

DRAWING: RNT0235

FORTLAND

NASSER ROHANI

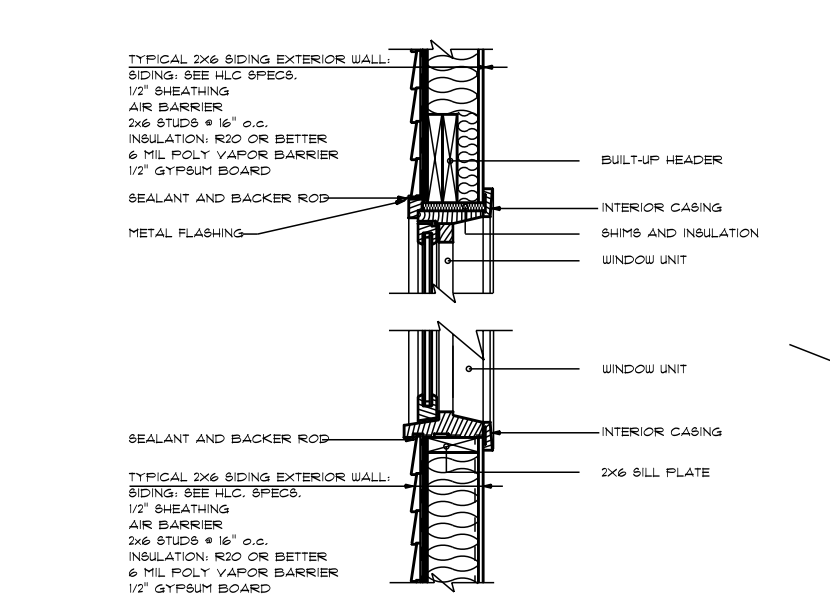
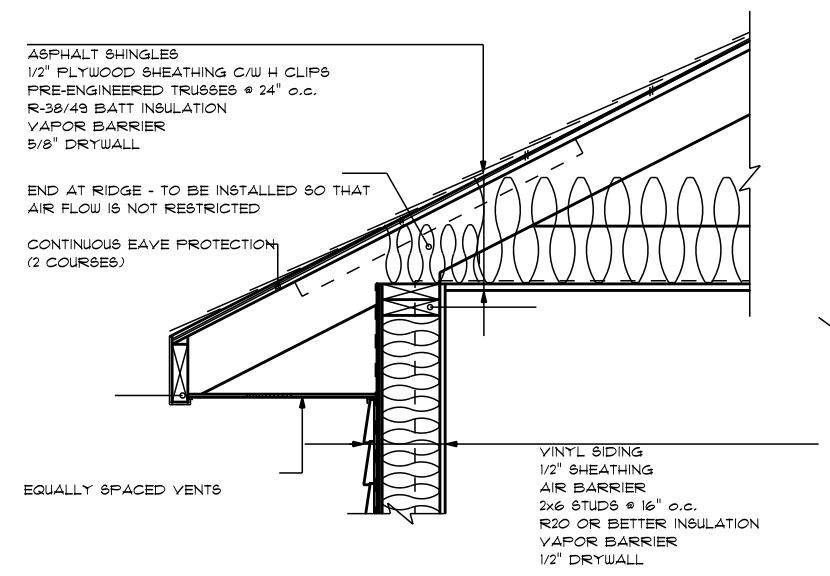
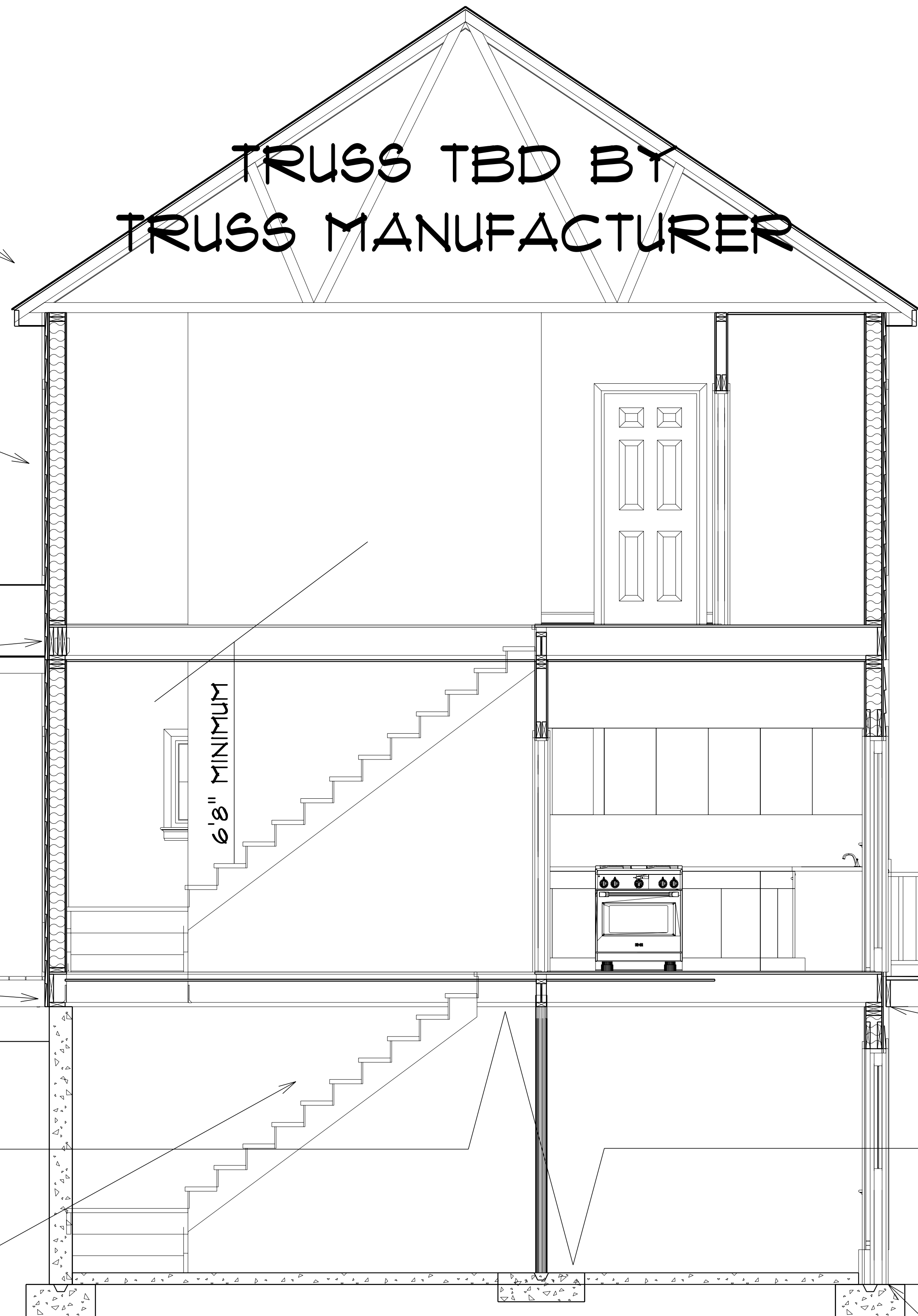
24x32 2 STORY

OWN

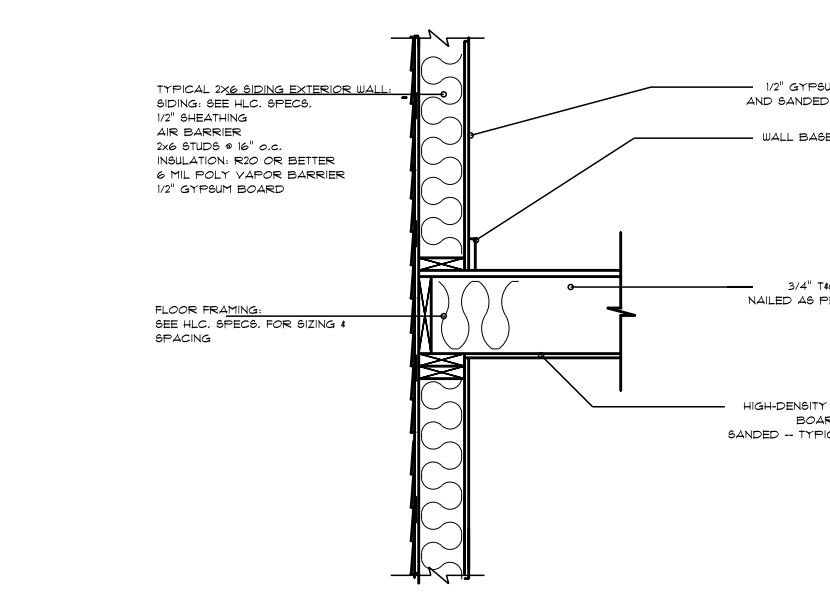


**SPECIFY TREAD:
SPECIFY RISER:**

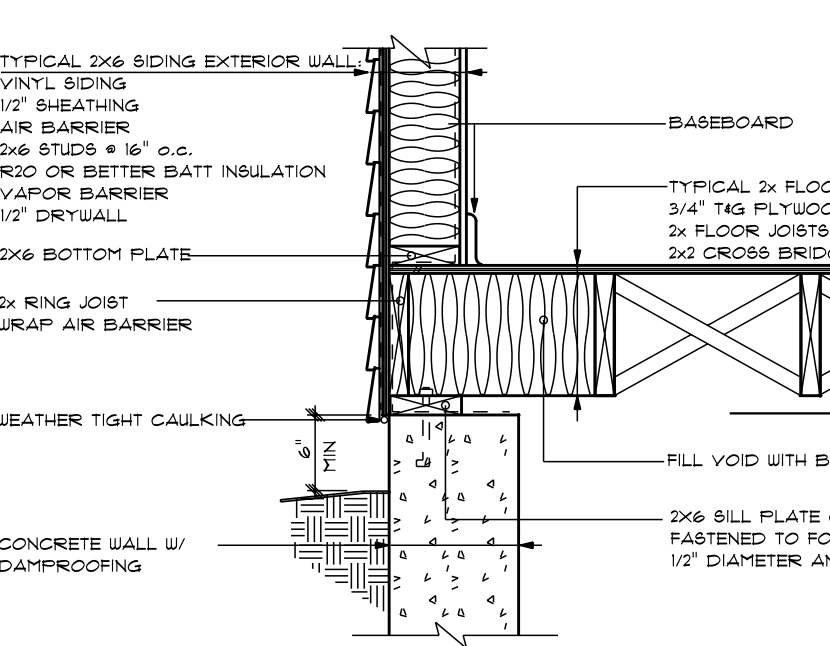
**TRUSS TBD BY
TRUSS MANUFACTURER**



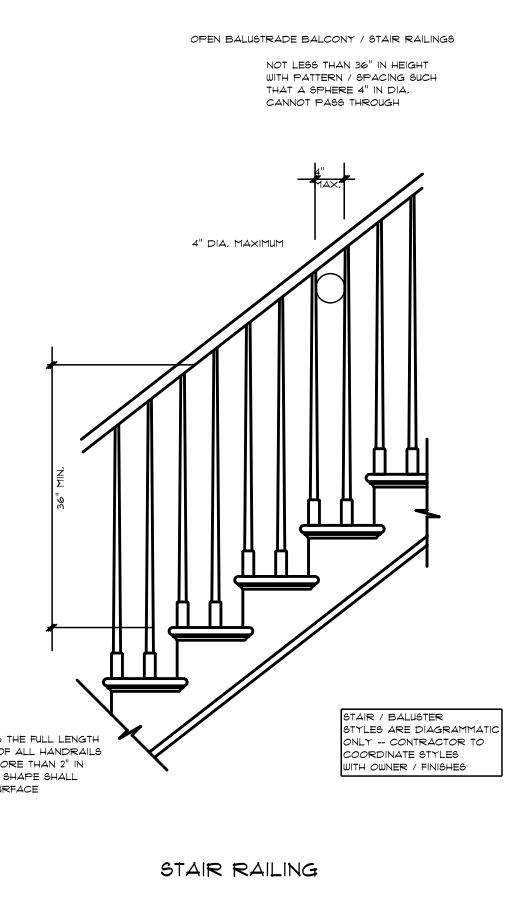
2X6 SIDING HEADER & SILL
REFER TO IRC 2009 FOR CODE REQUIREMENTS.



2X6 SIDING, FLOOR FRAMING
REFER TO IRC 2009 FOR CODE REQUIREMENTS.

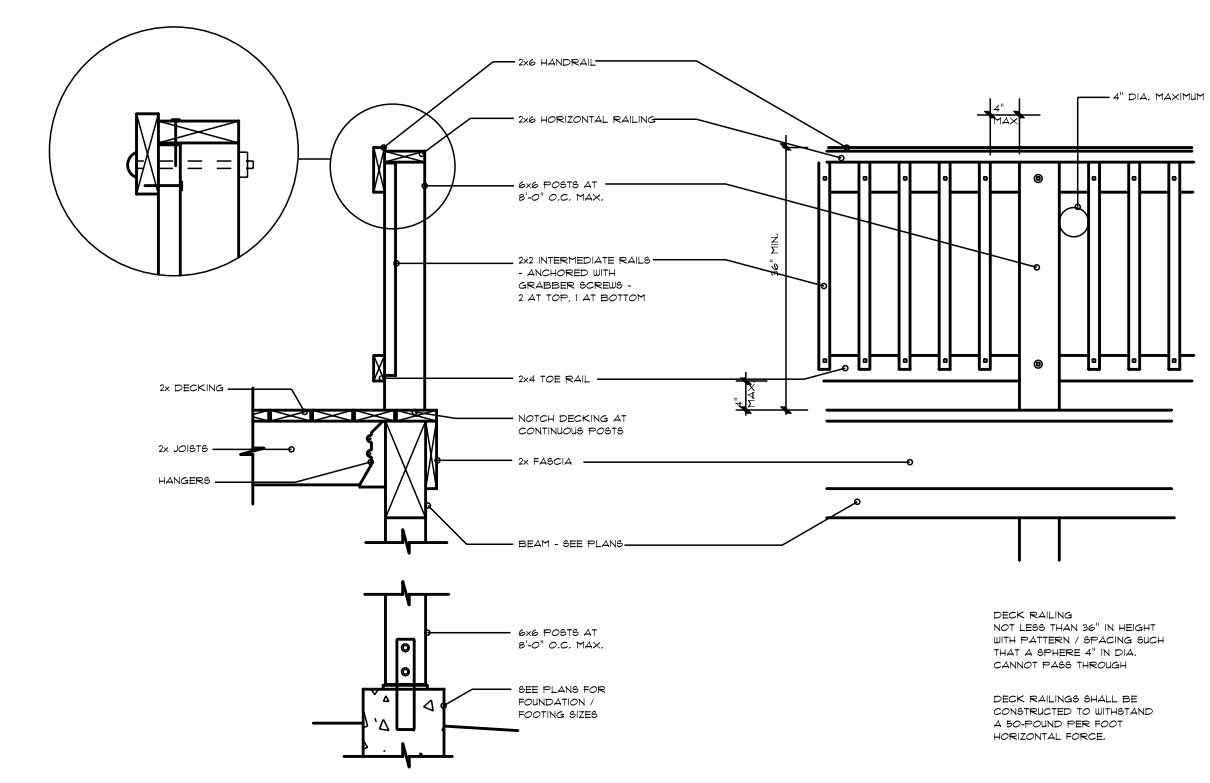


CROSS SECTION

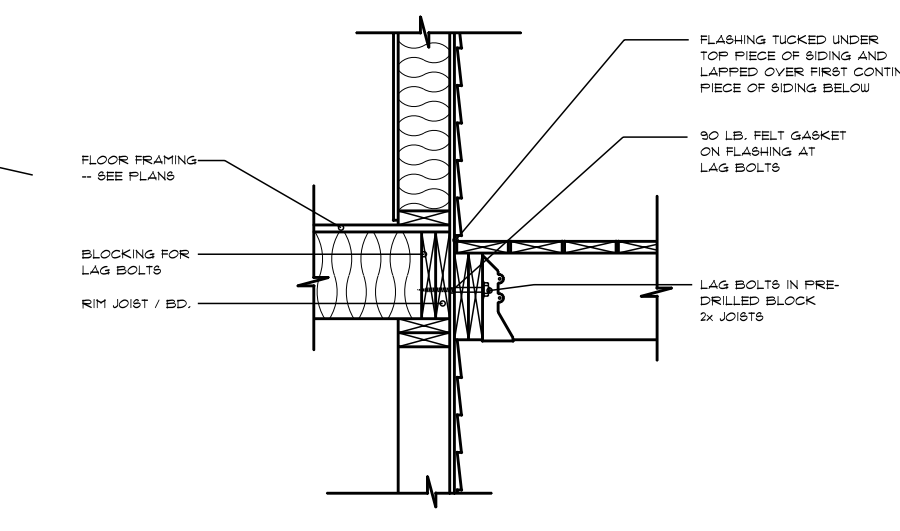


STAIR RAILING

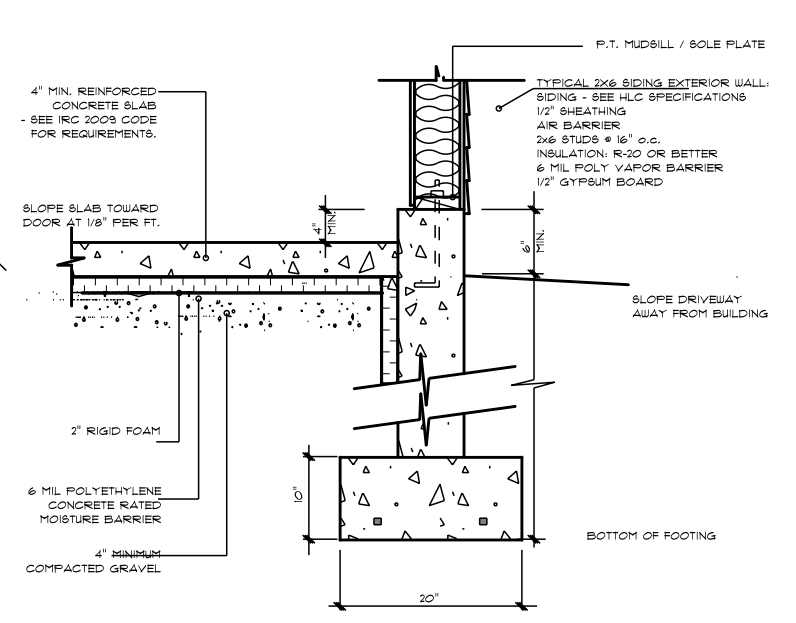
TYPICAL - NOT TO SCALE
 HAMMOND LUMBER COMPANY HAS SUPPLIED THIS DRAWING FOR ILLUSTRATIVE AND INFORMATIONAL PURPOSES ONLY. THE HOMEOWNER/CONTRACTOR IS RESPONSIBLE FOR ENSURING THAT THE MATERIALS CHOSEN WILL COMPLY WITH LOCAL BUILDING CODES AND/OR STANDARD BUILDING PRACTICES. HAMMOND LUMBER COMPANY SUGGESTS THAT ISN'T CUSTOMERS SEEK THE ASSISTANCE OF A REGISTERED ENGINEER OR ARCHITECT IF FURTHER INFORMATION IS NEEDED. THIS DRAWING IS NOT INTENDED TO BE USED AS A BASIS FOR CONSTRUCTION AND HAMMOND LUMBER COMPANY DISCLAIMS ANY RESPONSIBILITY IF THEY ARE SO USED.



DECK AND RAILING



DECK LEDGER CONNECTION



POURED CONCRETE FOOTING AT GARAGE
REFER TO IRC 2009 FOR CODE REQUIREMENTS.