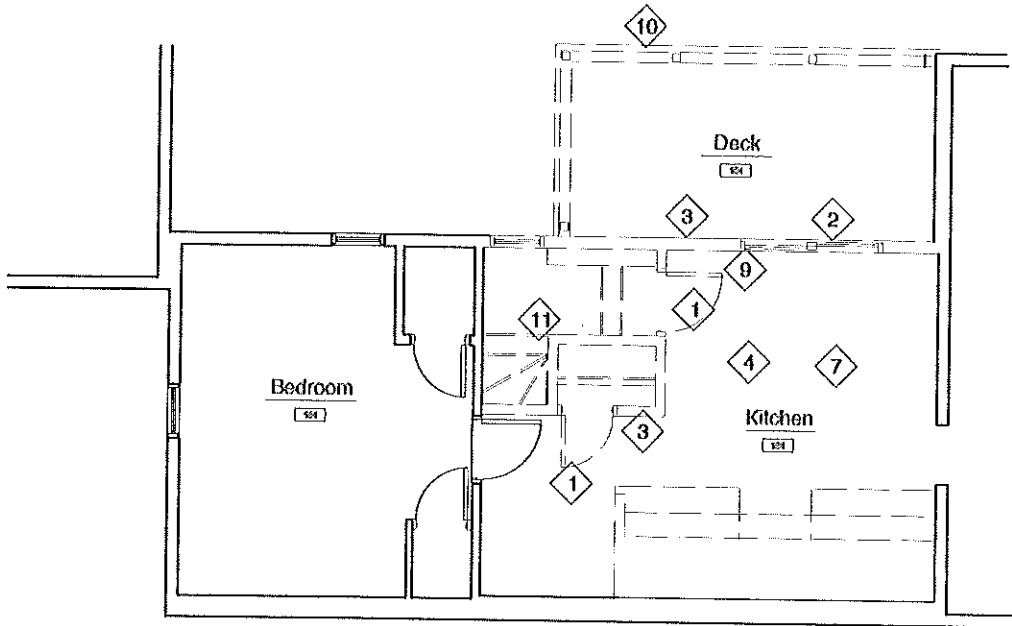
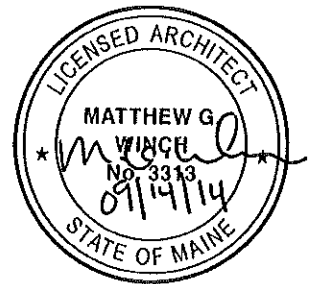
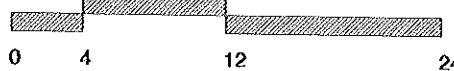


Demolition Notes

- 1 Remove existing door, frame and blocking. Prep opening for infill wall.
- 2 Remove existing door or window.
- 3 Remove existing wall.
- 4 Remove existing carpet, backing and accessories.
- 5 Remove existing concrete.
- 7 Remove existing lighting fixtures and ceiling material.
- 8 Remove existing roof framing, shingles and sheathing
- 9 Remove existing electrical equipment
- 10 Remove porch rails and decking.
- 11 Remove existing stair framing
- 12 Remove existing cupboards and cabinets
- 13



10 2nd Floor Demo Plan



GARRISON
CONSULTING

41 edgewood ave
portland, maine 04103
telephone 207 450 0750

e-mail matthewwinch@earthlink.net

DeSalle House
Auburn St.
Portland, Maine
**Second Floor
Demolition Plan**

Scale: 1/4" = 1'-0" Date: 07/10/14
Drawn By: MGW
Project No: 2014-008
DWG NO:

DEMO-02