

May 3, 2012

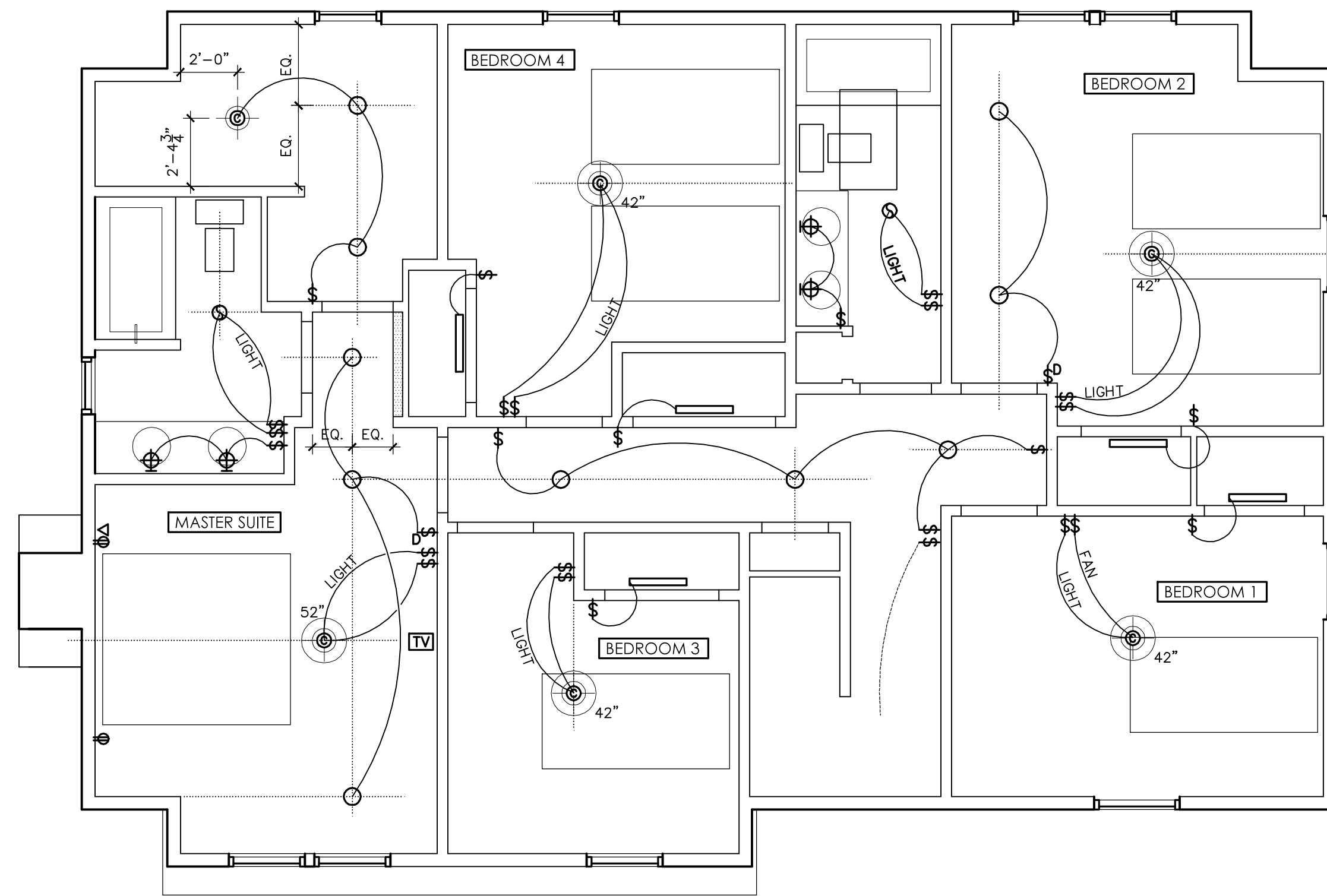
▶ Lighting Plans

DRAWING SHEETS

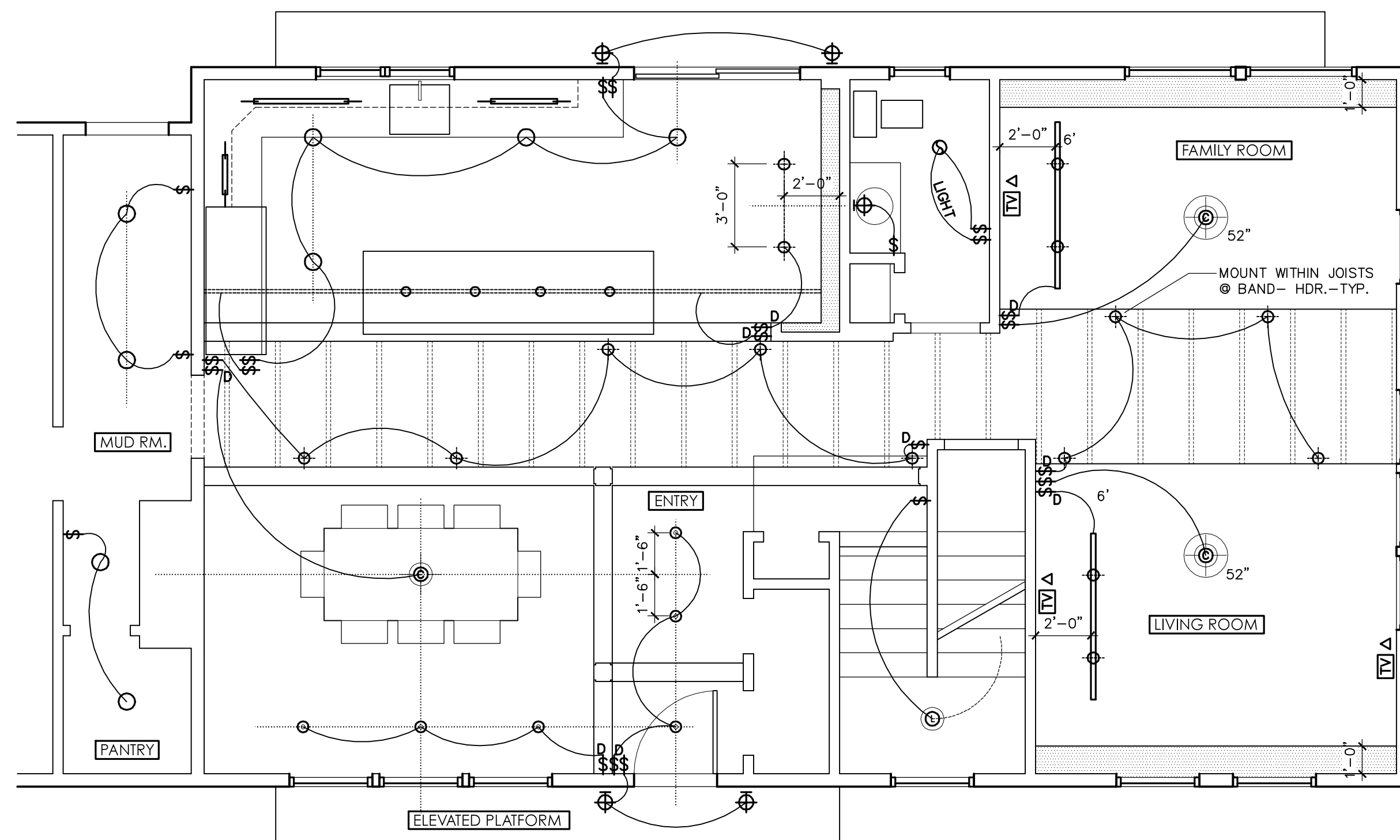
A1 First & Second Floor Plans
 A2 Bldg. Elevations, Sched.
 A3 Building Sections, Notes
 A4 Lighting Plans

PERMIT

A-4



02 SECOND LEVEL LIGHTING PLAN
 scale: 1/4" = 1'-0"



01 FIRST LEVEL LIGHTING PLAN
 scale: 1/4" = 1'-0"

FIXTURE TYPE LEGEND

- ⊙ PENDANT- (provide round junction box in ceiling)
 L' LARGE OR 'S' SMALL- HEIGHT LISTED BESIDE SYMBOL
- 5" RECESSED INCANDESCENT FLOOD- LIGHT/TOUR- WHITE COLEX
- ⊖ TYP. RECESSED LIGHT IN SLOPED CLG.
- ⊙ 4" RECESSED HALOGEN SPOT- LIGHT/TOUR OR EQUAL
 W/ WHITE COLEX BAFFLE
- ⊖ ULEXTRA RECESSED WITH T4030-WH (WHITE TRIM)
 AIR TIGHT HOUSING: HIC04-MR-M-50 (MR-16: 35W)
- ⊙ CEILING LIGHT
- ⊙ CEILING FAN / LIGHT (SWITCH LIGHT/FAN SEPARATE)
 ALL 52" FANS TO BE XLP (SILENT OPERATION) MOTORS
- ⊖ EXHAUST FAN (W/ LIGHT IF LISTED ON CIRCUIT)
 PANASONIC WHISPER QUIET- SEE LOCATION FOR MODEL #
- ⊕ WALL MOUNTED LIGHT (provide round junction box in wall)
- length of track
 — track head
 — 10" stem
 — TRACK HEADS- STEM MOUNT- MONOPOINT CONN.
- UNDERCOUNTER LIGHTS-
- LOW VOLTAGE CABLE MOUNTED PENDANTS
 — pendant
- 2' FLUORESCENT- (mount to header above closet doors)
- ⊖ STANDARD LAMP HOLDER- PULL CHAIN IF SWITCH
 IS NOT SHOWN
- ⊖ DOOR BELLS
- ⊖ WALL LIGHT-EMBED IN STONE WALL

GENERAL ELECTRICAL NOTES

ALL OUTLETS, SWITCHES AND COVERS TO BE PURE WHITE
 ELEC. PANEL TO BE SURGE PROTECTED
 ALL SWITCHED OUTLETS HAVE THE TOP OUTLET SWITCHED WITH
 THE BOTTOM OUTLET ALWAYS ACTIVE

REQUIRED OUTLETS, LIGHTS, AND
 SMOKE ALARMS BY CODE. ALL WIRING TO BE PERFORMED
 ACCORDING ALL NATIONAL, LOCAL, AND CITY CODES.

⊖ CEILING/ BULKHD. BELOW TYP. CLG. HEIGHT: 6" U.N.O.	⊖ FIXTURE MOUNTING HT.
⊖ WALL MOUNTED	⊖ PHOTO SENSOR
⊖ MOTION SENSOR	

ELECTRICAL LEGEND

- ⊖ SWITCH
 D (DIMMER)
 M (MOTION ACTIVATED)
 T (TIMER)
- ⊖ DUPLEX OUTLET
- ⊖ CIRCUIT
- ⊖ GROUND FAULT INTERRUPTER**
- ⊖ SWITCH LOCATED ON LEVEL
 ABOVE OR BELOW
- ⊖ WATERPROOF DUPLEX OUTLET**
- ⊖ SINGLE 220 VOLT OUTLET**
- ⊖ BRASS FLOOR OUTLET- FLUSH WITH TILE
- ⊖ DUAL TELEPHONE/CABLE JACK
- ⊖ OUTLET STRIP
- ⊖ AMP PANEL
- ⊖ FROST PROOF SILCOCK

* MOUNT CENTER-LINE OF SWITCH @ 4'-0"
 AFF/FIN. GRADE UNLESS OTHERWISE NOTED

** MOUNT OUTLET @ 16" AFF OR
 8" ABOVE COUNTER UNLESS
 OTHERWISE NOTED

ALL OUTLETS/SWITCHES TO BE PURE WHITE W/
 PURE WHITE COVER PLATES- TYP.
 ALL SWITCHES TO BE TOGGLE STYLE