

AUGUST 10, 2012

► Floor Plans and Notes

DRAWING SHEETS

A1 First & Second Floor Plans  
A2 Bldg. Elevations, Sched.  
A3 Building Sections

PERMIT SET

A-1

**FOUNDATION NOTES**

**DECK PIERS**

10" SONOTUBE ON 16" SQ. FOOTING OR TAPERED PRECAST CONC. PIER ON 16" SQ. FOOTING WITH (4) #4 BARS FORMING GRID 3" UP FROM BOT. OF FTG.

**CMU OVER EXIST. FDN.**

LAY 2" COURSES MIN. OVER TOP OF EXISTING FOUNDATION TO MAINTAIN 8" MIN. CLEAR BETWEEN GRADE AND BOT. OF SIDING- TYP. EAST WALL WILL NEED SEVERAL MORE TO ACHIEVE THIS RESULT

**EXIST. FDN. TO CMU CONNECTION:**

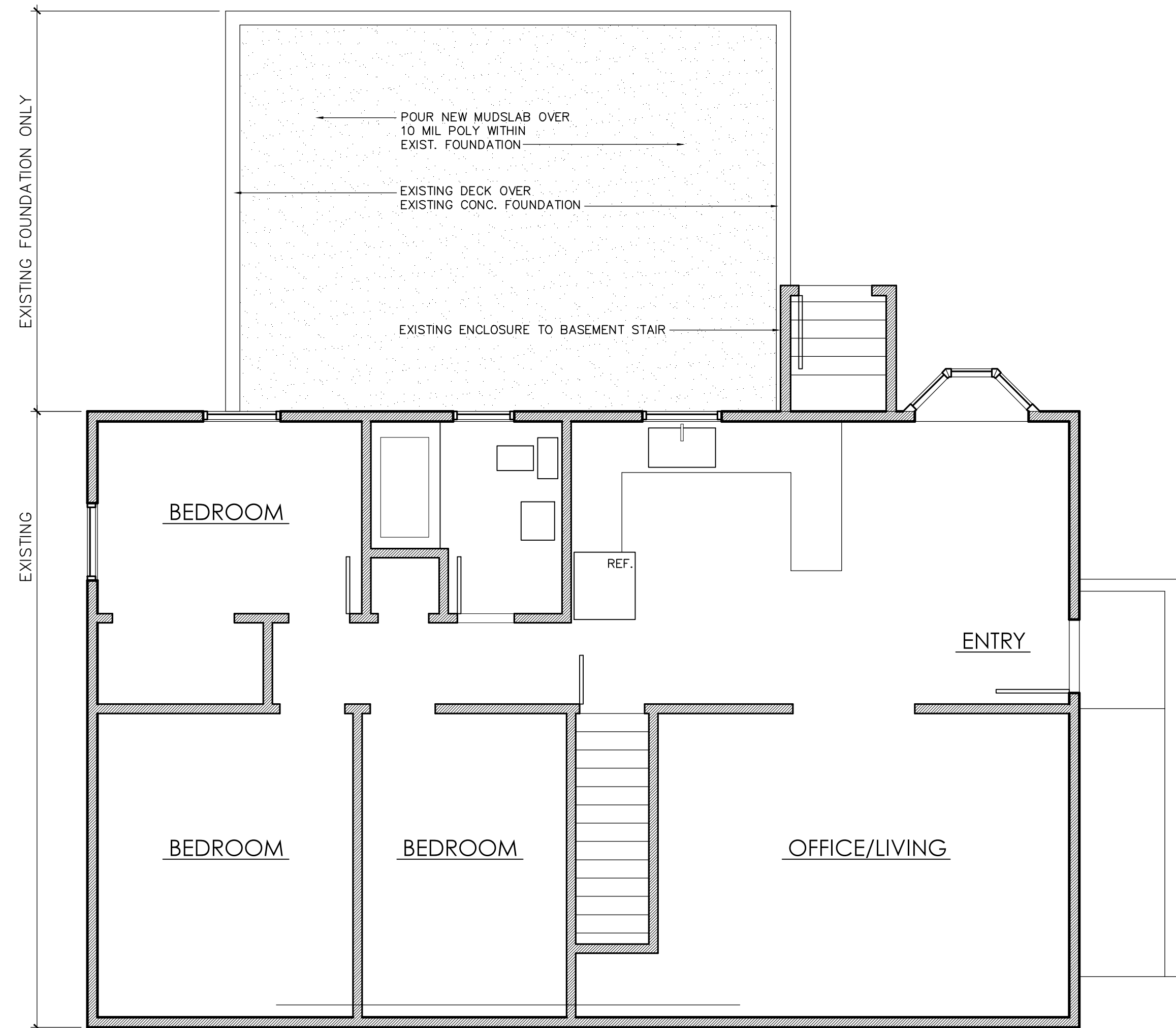
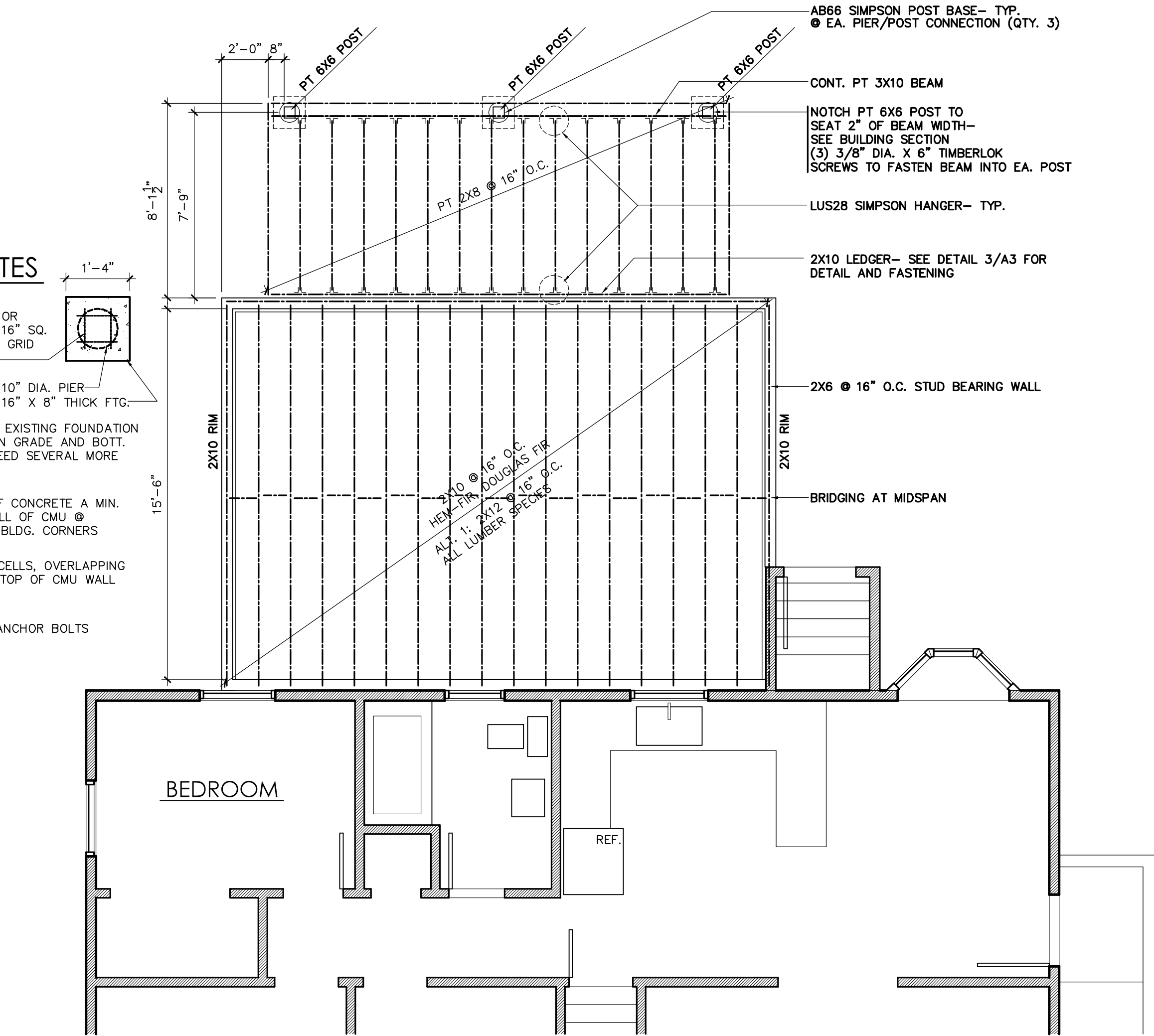
EPOXY THREADED RODS INTO TOP OF CONCRETE A MIN. OF 8" EMBEDMENT AND 12" INTO CELL OF CMU @ 2'-8" O.C. HORIZ. & WITHIN 12" OF BLDG. CORNERS

**VERT. CMU REINFORCEMENT:**

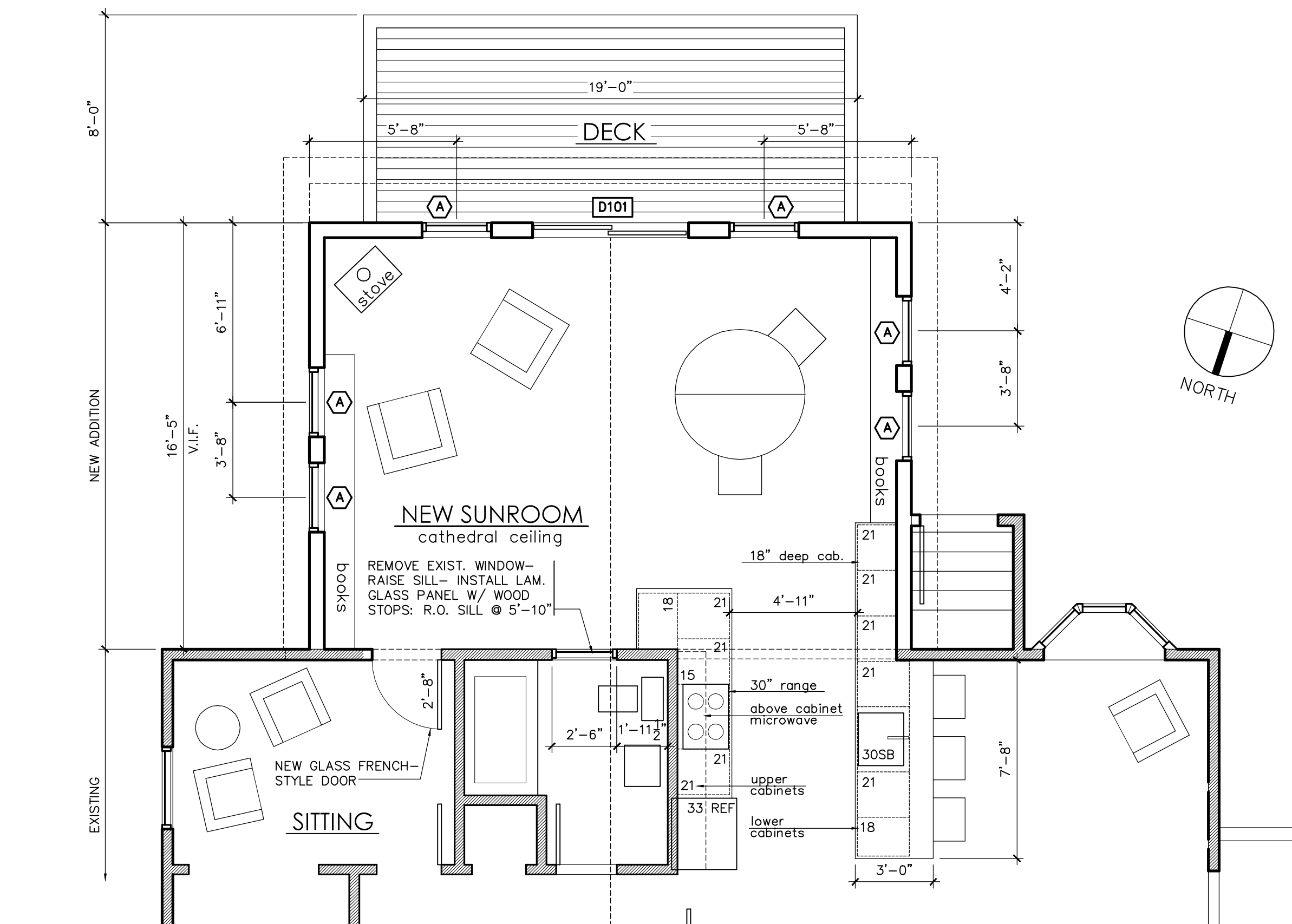
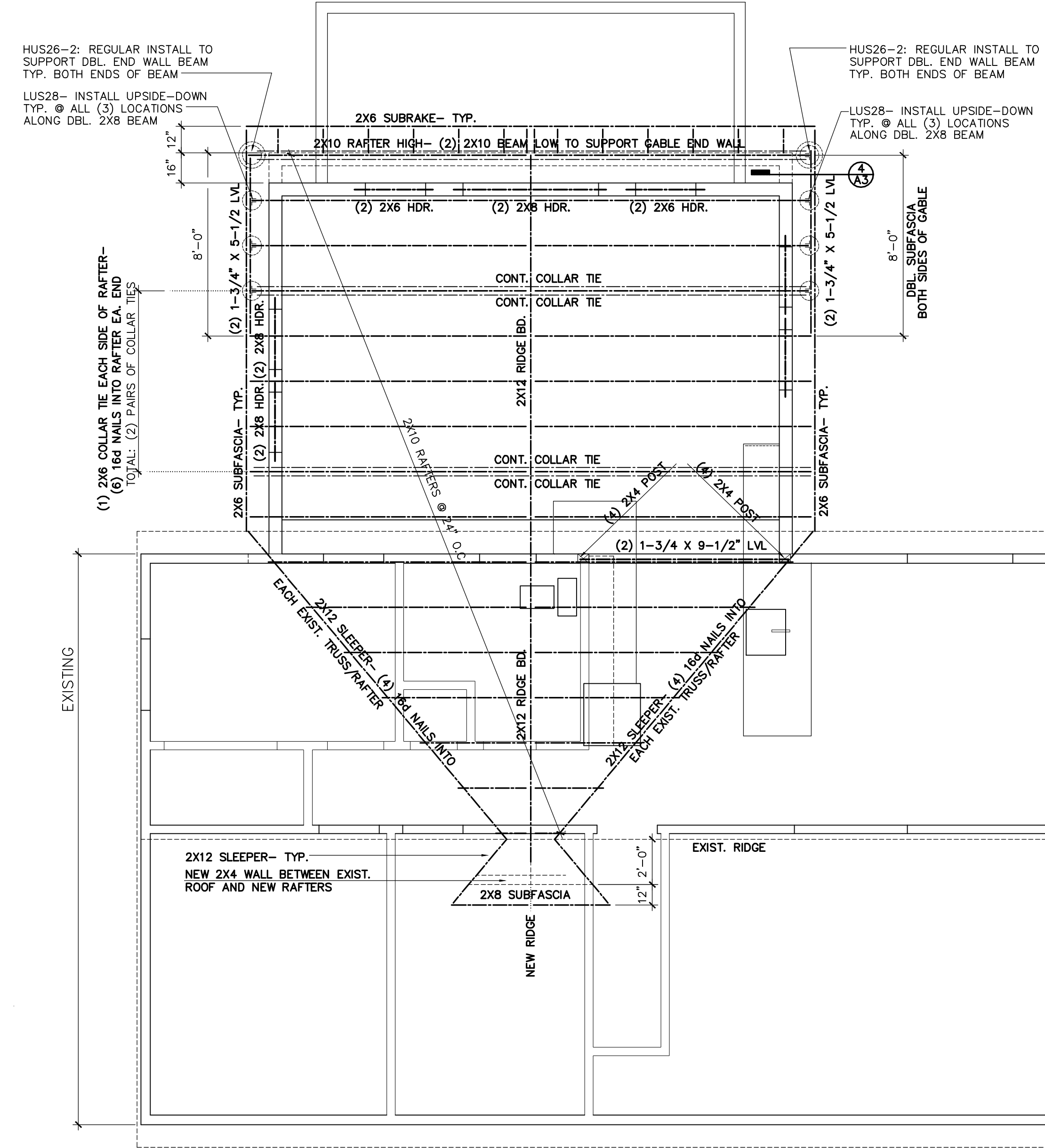
ADD #4 BARS INTO THREADED ROD CELLS, OVERLAPPING 10" AND CONT. TO WITHIN 2" FROM TOP OF CMU WALL GROUT REINF. CELLS SOLID

**ANCHOR BOLTS**

INSTALL 1/2" DIA. X 6" LONG HDG ANCHOR BOLTS IN EVERY REINF. CELL



01 EXISTING FLOOR PLAN W/ NEW SECOND FLOOR FRAMING ABOVE  
scale: 1/4" = 1'-0"



02 SECOND LEVEL PLAN W/ ROOF FRAMING ABOVE  
scale: 1/4" = 1'-0"