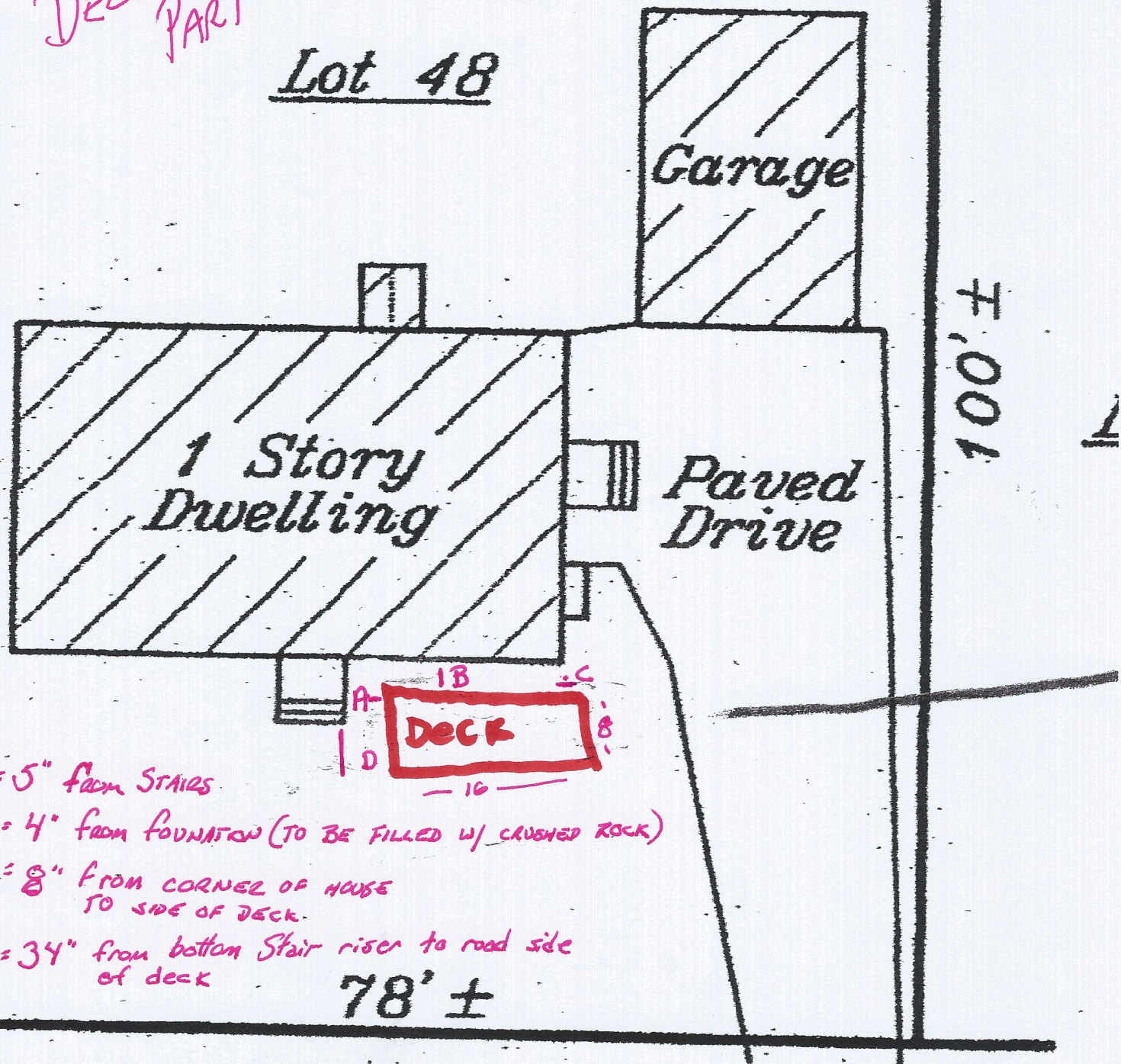


DECK PLAN PART II

Lot 48



A = 5" from STAIRS

B = 4" from FOUNDATION (TO BE FILLED W/ CRUSHED ROCK)

C = 8" FROM CORNER OF HOUSE TO SIDE OF DECK

D = 34" from bottom Stair riser to road side of deck

78' ±

100' ±

Commit Park Avenue

← To Auburn St.

ENCUMBRANCES, IF ANY.