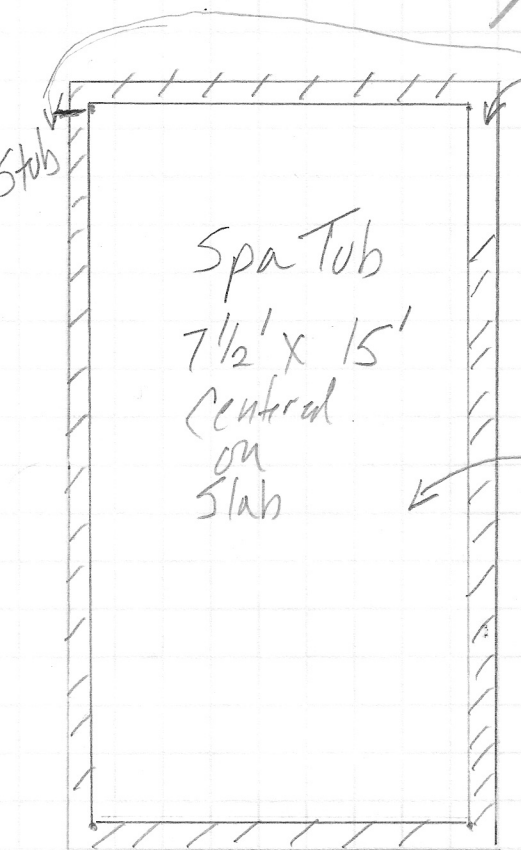


# Top View



Slab (Concrete 10" 4000lb PSI)

Rebar 1/2" x 12" on Center

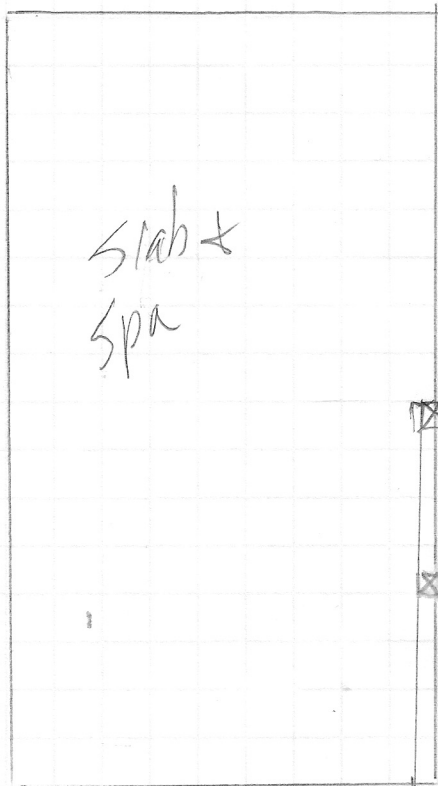
Stab for grounding

Slab  
Spa layout

Spa Tub  
7 1/2' x 15'  
centered  
on  
slab

Spa Tub Modular  
Above grade

1/4" = 1 foot



Railing Guards

Steps

Platform  
15.5" High

(Unattached)

5 Steps resting on  
concrete blocks 2" x 12"  
and on slab a back edge  
ground subsurface 16"  
of compacted gravel

17 3/4 Steps

3/4 inch nosing

Framing pressure treated

2x8 ripped down - 12" OC

Box on Box Frame  
Construction

Cedar Decking (Screwd)

Three boards each step

Fastened with GRK  
exterior screws