

**SURFACE RACEWAYS - NOTES**

1. SURFACE RACEWAYS SHALL ONLY BE INSTALLED ON EXISTING BLOCK WALLS. ALL PATHWAYS AND CABLING SHALL BE CONCEALED WITHIN ANY OTHER WALL TYPE AND ABOVE CEILINGS.
2. WHERE SURFACE RACEWAYS ARE REQUIRED FOR DEVICES MOUNTED CL UP 48" AND LOWER (AND WHERE SPECIFICALLY NOTED), THE VERTICAL PORTION OF THE RACEWAYS SHALL DROP WITHIN THREE FEET OF THE CORNER OF A ROOM. BUILT-IN ITEM (SUCH AS A TEACHERS WARDROBE CLOSET), DOORWAY, ETC.), THEN RUN HORIZONTALLY TO THE DEVICE.

**4 SURFACE RACEWAYS**  
SCALE: NO SCALE

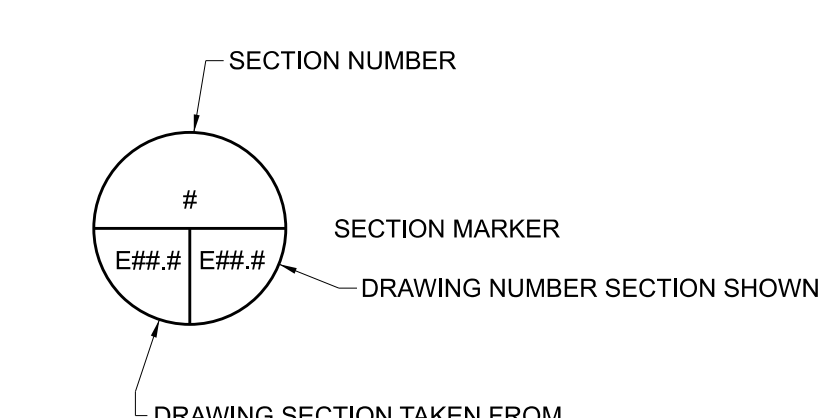
**1 NOT USED**  
SCALE: NO SCALE

**2 NOT USED**  
SCALE: NO SCALE

**ELECTRICAL LEGEND**

LP-1.3	←←←←←	HOMERUN TO PNLBRD - ARROWS INDICATE NUMBER OF CIRCUITS. CROSS LINES INDICATE NUMBER OF CONDUCTORS OTHER THAN TWO (PROVIDE NUMBER OF WIRES REQUIRED TO ALLOW SWITCHING SHOWN - E10 SERIES LIGHTING DRAWINGS).
		PANEL DESIGNATION
		WIRING CONCEALED IN WALL OR CEILING
		WIRING IN RACEWAY CONCEALED UNDER FLOOR/UNDER GROUND
		LIGHTING - REFER TO DRAWING E70.1 FOR LIGHTING RELATED DETAILS
		2'x2' RECESSED LIGHTING FIXTURE - SEE LIGHTING FIXTURE SCHEDULE
		1'x4' RECESSED LIGHTING FIXTURE - SEE LIGHTING FIXTURE SCHEDULE
		2'x4' RECESSED LIGHTING FIXTURE - SEE LIGHTING FIXTURE SCHEDULE
		RECESSED DOWNLIGHT - SEE LIGHTING FIXTURE SCHEDULE
		PENDANT / SURFACE LIGHTING FIXTURE - SEE LIGHTING FIXTURE SCHEDULE
		WALL MOUNTED LIGHTING FIXTURE - SEE LIGHTING FIXTURE SCHEDULE
		LIGHTING FIXTURE ON NIGHT LIGHT CIRCUIT
		SINGLE POLE SWITCH - MOUNT CL UP 48" UNLESS NOTED OTHERWISE - WHERE SHOWN SERVING EQUIPMENT LOCATE ABOVE ACCESSIBLE CEILING DIRECTLY ABOVE EQUIPMENT
		THREE-WAY SWITCH - MOUNT CL UP 48" UNLESS NOTED OTHERWISE
		FOUR-WAY SWITCH - MOUNT CL UP 48" UNLESS NOTED OTHERWISE
		0-10V DIMMER SWITCH - MOUNT CL UP 48" UNLESS NOTED OTHERWISE
		OCCUPANCY SENSOR AND POWER PACK - PROVIDE NUMBER OF POWER PACKS REQUIRED TO ALLOW FOR NUMBER OF OCCUPANCY SENSORS AND SWITCHING SHOWN - DASHED LINE INDICATES GROUPING OF SENSORS - SEE DETAIL
		LOW VOLTAGE ON/OFF - ON/OFF/RAISE/LOWER CONTROL STATION - MOUNT CL UP 48" UNLESS NOTED OTHERWISE - SUBLETTER RELATES SWITCH TO RELAY - SEE LIGHTING RELAY SCHEDULES ON DRAWING E70.1
		SUBLETTER INDICATES SWITCH CONTROL
		LOW VOLTAGE LIGHTING RELAY PANEL - SEE LOW VOLTAGE LIGHTING CONTROL DEFINITIONS, SINGLE LINE RISER AND SCHEDULE ON DRAWING E70.1
		EXIT SIGN WITH ARROWS AS INDICATED OR HATCH INDICATES FACE - CEILING MOUNTED - SEE DETAIL ON DRAWING E70.1 FOR WIRING REQUIREMENTS
		EXIT SIGN WITH ARROWS AS INDICATED OR HATCH INDICATES FACE - WALL MOUNTED CL UP 18" ABOVE DOOR - SEE DETAIL ON DRAWING E70.1 FOR WIRING REQUIREMENTS
		EMERGENCY BATTERY UNIT - SEE DETAIL ON DRAWING E70.1 FOR WIRING REQUIREMENTS - MOUNT BOTTOM UP 7'-6" UNLESS NOTED OTHERWISE
		EMERGENCY BATTERY UNIT/AUTOMATIC BATTERY UNIT EMERGENCY POWER SYSTEM INVERTER
		EMERGENCY BATTERY UNIT REMOTE HEAD - DOUBLE HEAD
		EMERGENCY BATTERY UNIT REMOTE HEAD - SINGLE HEAD
		POWER AND SYSTEMS - REFER TO DRAWING E70.2 FOR POWER AND SYSTEMS RELATED DETAILS
		LETTER ADJACENT TO SYMBOL INDICATES SPECIAL MOUNTING DESIGNATION - SEE ITEM DESCRIPTIONS BELOW
		TAMPER RESISTANT DUPLEX CONVENIENCE RECEPTACLE - MOUNT CL UP 24" UNLESS NOTED OTHERWISE - "A" INDICATES MOUNT CL UP 6" ABOVE COUNTER BACKSPLASH / CL 48" WHERE NOT LOCATED AT A COUNTER
		TAMPER RESISTANT DOUBLE DUPLEX CONVENIENCE RECEPTACLE - MOUNT CL UP 24" UNLESS NOTED OTHERWISE - "A" INDICATES MOUNT CL UP 6" ABOVE COUNTER BACKSPLASH / CL 48" WHERE NOT LOCATED AT A COUNTER
		TAMPER RESISTANT GFCI DUPLEX CONVENIENCE RECEPTACLE - MOUNT CL UP 24" UNLESS NOTED OTHERWISE - "A" INDICATES MOUNT CL UP 6" ABOVE COUNTER BACKSPLASH / CL 48" WHERE NOT LOCATED AT A COUNTER
		SPECIAL RECEPTACLE - COORDINATE NEMA CONFIGURATION AND MOUNTING WITH FURNISHED EQUIPMENT UNLESS NOTED
		RECEPTACLE IN A CIRCLE - PENDANT MOUNT - SEE DETAIL
		TAMPER RESISTANT PLUGMOLD - MOUNT IN PLACE OF EXISTING
		7" INDICATES FLUSH FLOOR REACH-IN DEVICE BOX - SEE DETAIL
		PROVISIONS FOR VOICE AND DATA OUTLET - JUNCTION BOX WITH SINGLE GANG RAISED RING AND TWO 1" CONDUIT TO ABOVE AN ACCESSIBLE CEILING - MOUNT CL UP 24" UNLESS NOTED OTHERWISE - "A" INDICATES MOUNT CL UP 6" ABOVE COUNTER BACKSPLASH / CL 48" WHERE NOT LOCATED AT A COUNTER
		PROVISIONS FOR AUDIO VISUAL OUTLET - DEEP JUNCTION BOX WITH DOUBLE GANG RAISED RING AND TWO 1 1/4" CONDUIT TO ABOVE AN ACCESSIBLE CEILING - MOUNT CL UP 24" UNLESS NOTED OTHERWISE
		PROVISIONS FOR WALL MOUNTED CLOCK - JUNCTION BOX WITH SINGLE GANG RAISED RING AND ONE 1" CONDUIT TO ABOVE AN ACCESSIBLE CEILING - MOUNT CL UP 8'-6" UNLESS NOTED OTHERWISE - CENTER OVER DOOR
		PROVISIONS FOR DIVISION 23 TEMPERATURE SENSOR - JUNCTION BOX WITH SINGLE GANG RAISED RING AND ONE 3/4" CONDUIT TO ABOVE AN ACCESSIBLE CEILING - MOUNT CL UP 48"
		PROVISIONS FOR WALL MOUNTED CCTV CAMERA - "CLG" INDICATES CEILING MOUNTED - JUNCTION BOX WITH SINGLE GANG RAISED RING AND ONE 1" CONDUIT TO ABOVE AN ACCESSIBLE CORRIDOR CEILING - MOUNTING HEIGHT AS INDICATED
		PROVISIONS FOR ACCESS CONTROL CARD READER - SEE PROVISIONS FOR ACCESS CONTROL DETAIL ON DRAWING E70.2
		PROVISIONS FOR ACCESS CONTROL MAGNETIC DOOR SWITCH - SEE PROVISIONS FOR ACCESS CONTROL DETAIL ON DRAWING E70.2
		PROVISIONS FOR ACCESS CONTROL KEY PAD - SEE PROVISIONS FOR ACCESS CONTROL DETAIL ON DRAWING E70.2
		CEILING MOUNTED PUBLIC ADDRESS SPEAKER
		WALL MOUNTED PUBLIC ADDRESS SPEAKER
		JUNCTION BOX
		DISCONNECT SWITCH
		FUSED DISCONNECT SWITCH
		VARIABLE FREQUENCY DRIVE FURNISHED BY DIVISION 23 AND INSTALLED AND WIRED BY DIVISION 26 - COORDINATE EXACT LOCATION WITH DIVISION 23
		ELECTRICAL MOTOR - # IN CENTER OF SYMBOL INDICATES HORSEPOWER
		PANELBOARD - 120/208V - REFER TO DRAWING E06.1 FOR EXISTING CONDITIONS PANELBOARD SCHEDULES - REFER TO DRAWING E06.1 FOR NEW PANELBOARD SCHEDULES
		FIRE ALARM SYSTEM - REFER TO FIRE ALARM SYSTEM DETAILS AND NOTES ON DRAWING E70.2
		FIRE ALARM SYSTEM CONTROL PANEL AND GRAPHIC MAP
		FIRE ALARM SYSTEM VOICE EVACUATION PANEL
		FIRE ALARM SYSTEM REMOTE ANNUNCIATOR AND GRAPHIC MAP
		FIRE ALARM SYSTEM MANUAL PULL STATION - MOUNT CL UP 48"
		FIRE ALARM SYSTEM SPEAKER / LIGHT UNIT - CANDLE POWER (CD) PER NFPA 72 AND AS NOTED - 1575 WHERE NOT OTHERWISE INDICATED ON PLANS - MOUNT CL UP 94" ON WALL
		FIRE ALARM SYSTEM STROBE LIGHT UNIT - CANDLE POWER (CD) PER NFPA 72 AND AS NOTED - 1575 WHERE NOT OTHERWISE INDICATED ON PLANS - MOUNT CL UP 94" ON WALL
		FIRE ALARM SYSTEM SPEAKER / LIGHT UNIT - CANDLE POWER (CD) PER NFPA 72 AND AS NOTED - 1575 WHERE NOT OTHERWISE INDICATED ON PLANS - MOUNT TO CEILING
		FIRE ALARM SYSTEM STROBE LIGHT UNIT - CANDLE POWER (CD) PER NFPA 72 AND AS NOTED - 1575 WHERE NOT OTHERWISE INDICATED ON PLANS - MOUNT TO CEILING
		FIRE ALARM SYSTEM DUCT SMOKE DETECTOR WITH SAMPLING TUBE
		FIRE ALARM SYSTEM COMBINATION SMOKE/CARBON MONOXIDE (CO) DETECTOR - MOUNT TO CEILING - COORDINATE EXACT LOCATION WITH MECHANICAL DIFFUSERS AND GRILLES - DO NOT LOCATE WITHIN 5 FEET OF A MECHANICAL DIFFUSER OR GRILLE
		FIRE ALARM SYSTEM HEAT DETECTOR - MOUNT TO CEILING
		FIRE ALARM SYSTEM ADDRESSABLE INPUT MODULE
		FIRE ALARM SYSTEM ADDRESSABLE OUTPUT MODULE
		FIRE ALARM SYSTEM TAMPER SWITCH
		FIRE ALARM SYSTEM FLOW SWITCH
		FIRE ALARM SYSTEM PRESSURE SWITCH
		ELECTRIC DOOR HOLDER / CLOSER - COORDINATE WITH DIVISION 06
		GENERAL ITEMS
		KEYNOTE TAG
		WEATHER PROOF
		EXISTING ITEMS SHOWN DASHED

**3 LEGEND**  
SCALE: NO SCALE



**HARRIMAN**

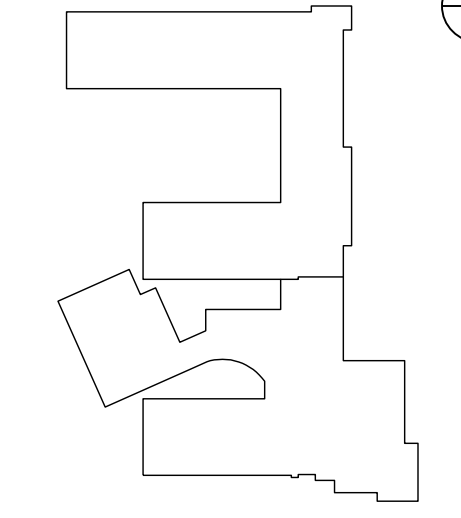
AUBURN PORTLAND PORTSMOUTH BOSTON

**HARRISON LYSETH ELEMENTARY SCHOOL**

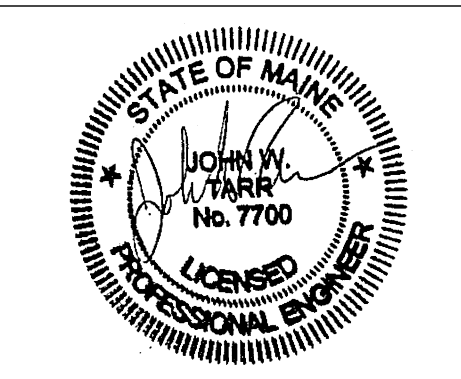
PORTLAND, MAINE

Harriman Project No. 18483

Key Plan Proj North



Issues and Revisions	
Date	Description
12-05-18	DESIGN DEVELOPMENT
01-30-19	FINAL REVIEW
03-15-19	CONSTRUCTION DOCUMENTS
06-07-19	CONFORMANCE SET

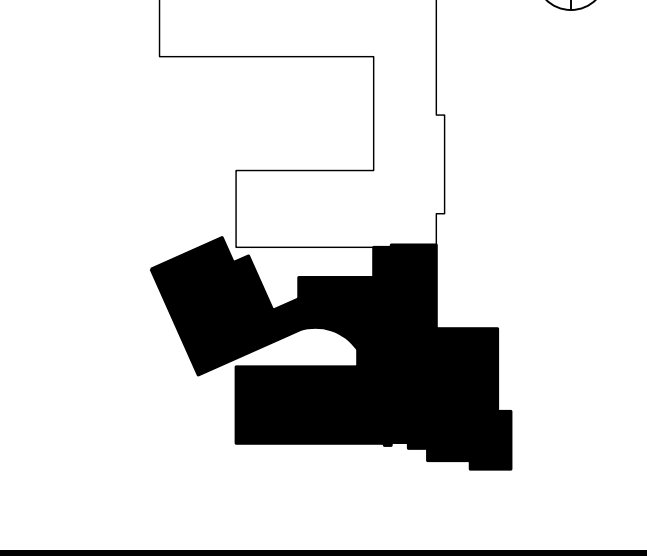


PA/PE: JWT © 2019  
Drawn By: JMB Harriman Associates

**LEGEND**

**E00.1**





**SLEEVES**

SLEEVES SHOWN ON THIS DRAWINGS ARE INTENDED FOR DIVISION 27 USE ONLY. FURNISH AND INSTALL SLEEVES REQUIRED IN ADDITION TO SLEEVES SHOWN ON THE DRAWINGS. REFER TO 20010, PART 1 (SLEEVES, INSERTS AND OPENINGS). PROVIDE ADDITIONAL SLEEVES FOR DIVISION 27 WHERE REQUIRED. COORDINATE WITH ALL SLEEVES SHALL BE CONCEALED ABOVE CEILING. EACH END OF THE SLEEVE SHALL BE ACCESSIBLE FROM BELOW AN ACCESSIBLE CEILING.

**GENERAL NOTES**

- RECEPTACLES AND FACEPLATES LOCATED ON WALLS WITH "MAG-RITE 48" SHALL BE WHITE. REFER TO ARCHITECTURAL INTERIOR ELEVATIONS FOR LOCATIONS.
- DIVISION 26 SHALL PROVIDE PATHWAYS AND BOXES REQUIRED FOR ALL DIVISION 28 (SECURITY SYSTEMS) APPLIANCES AND DEVICES. PATHWAYS SHALL RUN FROM APPLIANCE/DEVICE TO ABOVE AN ACCESSIBLE CEILING. DIVISION 26 SHALL ALSO PULL WIRING / CABLE AND MOUNT ALL APPLIANCES AND DEVICES FURNISHED BY THE DIVISION 28 (SECURITY SYSTEMS) VENDOR. COORDINATE WITH INCLUDED DIVISION 28 (SECURITY SYSTEMS) DRAWINGS.
- PROVIDE PATHWAYS TO ACCOMMODATE DEVICES AND APPLIANCES REQUIRED IN SPECIFICATION SECTION 080671 DOOR HARDWARE SETS.

- NOTES:
- ALL COMMUNICATIONS AND AV (DIVISION 27) PATHWAYS SHALL RUN OVERHEAD, NOT IN OR UNDER SLAB.
  - ANY PATHWAY SERVING THE GYMNASIUM OVERHEAD FROM THE REST OF THE BUILDING SHALL RISE IN CHASE PROVIDED AT THE GYMNASIUM ENTRANCE FROM CONNECTOR 7B.
  - ALL PATHWAYS FROM PROVISIONS FOR VOICE AND DATA SHALL RUN TO THE BRD SHOWN ON DRAWING 20.3 IN MECHANICAL MEZZANINE 201.

**KEY NOTES:**

- AL3...**  
 BASE BID: NO AIR CONDITIONING IN THE LIBRARY. ANY CIRCUIT BREAKER SHOWN SERVING EQUIPMENT CONNECTED UNDER ALTERNATE #3 SHALL BE PROVIDED AND LABELED "SPARE". ADD ALTERNATE #3. PROVIDE CONNECTION TO LIBRARY CONDENSING UNIT / EVAPORATOR UNIT. DRAWING. COORDINATE WITH DIVISION 27.
- AL5...**  
 BASE BID: NO PROVISIONS PROVIDED. ADD ALTERNATE #5. PROVIDE PROVISIONS FOR DIVISION 23 TEMPERATURE SENSORS.
- C01...**  
 CAFETERIA AV BACK BOX. ALL CAFETERIA AV EQUIPMENT PATHWAYS SHALL HOMERUN BACK TO THIS AV BACK BOX PROVIDING A CONTINUOUS PATHWAY. REFER TO OTHER "CM" KEY NOTES. REFER TO RISER ON DIVISION 27 T20 SERIES DRAWING. LOCATE RECEPTACLE AND AV BACK BOX TO SERVE AV RACK. COORDINATE WITH DIVISION 27. SIZE AV BACK BOX AS REQUIRED.
- C02...**  
 PROVISIONS FOR DIVISION 27 CAFETERIA AV SYSTEM MICROPHONE OUTLET. PROVIDE JUNCTION BOX WITH DOUBLE GANG RAISED RING AND ONE 1" CONDUIT TO CAFETERIA AV BACK BOX. MOUNT C/L UP 24". REFER TO RISER ON DIVISION 27 T20 SERIES DRAWING. COORDINATE WITH DIVISION 27.
- C03...**  
 PROVISIONS FOR DIVISION 27 CAFETERIA AV SYSTEM BLUETOOTH PLATE. PROVIDE JUNCTION BOX WITH SINGLE GANG RAISED RING AND ONE 1" CONDUIT TO CAFETERIA AV BACK BOX. MOUNT C/L UP 24". REFER TO RISER ON DIVISION 27 T20 SERIES DRAWING. COORDINATE WITH DIVISION 27.
- C04...**  
 PROVISIONS FOR DIVISION 27 CAFETERIA AV SYSTEM SPEAKER. BACK BOX FURNISHED UNDER DIVISION 27 AND INSTALLED UNDER DIVISION 26. MOUNT TO UNBUILT SPRINKLING TOP CORD OF JOIST. ADD ALTERNATE #3. PROVIDE CONNECTION TO LIBRARY CONDENSING UNIT / EVAPORATOR UNIT. DRAWING. COORDINATE WITH DIVISION 27.
- C05...**  
 PROVIDE 2" CONDUIT FROM ABOVE LIBRARY 13 ACCESSIBLE CEILING TO COMMUNICATIONS BRD SHOWN ON DRAWING E20.3 IN MECHANICAL MEZZANINE 201 FOR DIVISION 27 FIBER. REFER TO NOTES LOCATED IN GYM 10 FOR ROUTING OF CONDUIT.
- F01...**  
 PROVIDE FIRE ALARM ADDRESSABLE OUTPUT MODULE TO SHUTDOWN SOUND SYSTEM ON GENERAL ALARM.
- F02...**  
 PROVIDE FIRE ALARM FLASHING BEACON ON EXTERIOR OF BUILDING. MOUNT DOWN 18" FROM TOP OF WALL. BEACON SHALL FLASH ON GENERAL ALARM. PROVIDE RED STROBE.
- F03...**  
 PROVIDE FIRE ALARM FLASHING BEACON ON EXTERIOR OF BUILDING. MOUNT DOWN 18" FROM TOP OF WALL. BEACON SHALL FLASH ON SPRINKLER WATER FLOW. PROVIDE WHITE STROBE.
- F04...**  
 LOCATE SMOKE DETECTOR BY SKYLIGHT. SEE DETAIL ON E70 SERIES DRAWING.
- F05...**  
 PROVIDE WIRE GUARD.
- F06...**  
 PROVIDE FIRE ALARM SYSTEM ADDRESSABLE OUTPUT MODULE TO SHUTDOWN EXISTING AHU FAN LOCATE IN MECHANICAL ROOM ABOVE.

- G01...**  
 GYMNASIUM AV BACK BOX. ALL GYMNASIUM AV EQUIPMENT PATHWAYS SHALL HOMERUN BACK TO THIS AV BACK BOX PROVIDING A CONTINUOUS PATHWAY. REFER TO OTHER "CM" KEY NOTES. REFER TO RISER ON DIVISION 27 T20 SERIES DRAWING. LOCATE RECEPTACLE AND AV BACK BOX TO SERVE AV RACK. COORDINATE WITH DIVISION 27. ABOVE AN ACCESSIBLE CEILING (LIBRARY CEILING). COORDINATE WITH DIVISION 27. SIZE AV BACK BOX AS REQUIRED.
- G02...**  
 PROVISIONS FOR DIVISION 27 EXTRON PROJECTOR INTERFACE. PROVIDE JUNCTION BOX WITH DOUBLE GANG RAISED RING AND TWO 1" CONDUIT. ONE 1" CONDUIT TO GYMNASIUM AV BACK BOX AND ONE 1" CONDUIT TO PROJECTOR BOX LOCATED AT BACK OF STAGE. MOUNT C/L UP 24". REFER TO RISER ON DIVISION 27 T20 SERIES DRAWING. COORDINATE WITH DIVISION 27.
- G03...**  
 PROVISIONS FOR DIVISION 27 GYMNASIUM AV SYSTEM MICROPHONE OUTLET. PROVIDE JUNCTION BOX WITH DOUBLE GANG RAISED RING AND ONE 1" CONDUIT TO GYMNASIUM AV BACK BOX. MOUNT C/L UP 24". REFER TO RISER ON DIVISION 27 T20 SERIES DRAWING. COORDINATE WITH DIVISION 27.
- G04...**  
 PROVISIONS FOR DIVISION 27 GYMNASIUM AV SYSTEM BLUETOOTH PLATE. PROVIDE JUNCTION BOX WITH SINGLE GANG RAISED RING AND ONE 1" CONDUIT TO GYMNASIUM AV BACK BOX. MOUNT C/L UP 24". REFER TO RISER ON DIVISION 27 T20 SERIES DRAWING. COORDINATE WITH DIVISION 27.
- G05...**  
 PROVISIONS FOR DIVISION 27 GYMNASIUM AV SYSTEM PROJECTOR. PROVIDE JUNCTION BOX WITH DOUBLE GANG RAISED RING AND FOUR 1" CONDUIT. ONE 1" CONDUIT FROM JUNCTION BOX ASSOCIATED WITH KEY NOTE "G04", ONE 1" CONDUIT FROM JUNCTION BOX ASSOCIATED WITH KEY NOTE "G05" AND TWO 1" CONDUIT TO GYMNASIUM SYSTEM AV BACK BOX. MOUNT C/L UP 6'-0". REFER TO RISER ON DIVISION 27 T20 SERIES DRAWING. COORDINATE WITH DIVISION 27.
- G06...**  
 PROVISIONS FOR DIVISION 27 GYMNASIUM AV SYSTEM REMOTE CONTROL. PROVIDE JUNCTION BOX WITH SINGLE GANG RAISED RING AND ONE 1" CONDUIT TO GYMNASIUM AV BACK BOX. MOUNT C/L UP 48". REFER TO RISER ON DIVISION 27 T20 SERIES DRAWING. COORDINATE WITH DIVISION 27.
- G07...**  
 PROVISIONS FOR DIVISION 27 AV SYSTEM PROJECTOR. PROVIDE JUNCTION BOX WITH DOUBLE GANG RAISED RING AND FOUR 1" CONDUIT. ONE 1" CONDUIT FROM JUNCTION BOX ASSOCIATED WITH KEY NOTE "G04", ONE 1" CONDUIT FROM JUNCTION BOX ASSOCIATED WITH KEY NOTE "G05" AND TWO 1" CONDUIT TO GYMNASIUM SYSTEM AV BACK BOX. MOUNT C/L UP 6'-0". REFER TO RISER ON DIVISION 27 T20 SERIES DRAWING. COORDINATE WITH DIVISION 27.
- G08...**  
 PROVIDE CONNECTION TO SHOWER LIGHT LIGHTING FIXTURE FURNISHED UNDER DIVISION 22 AND INSTALLED BY DIVISION 26.

- P01...**  
 REPLACE EXISTING RECEPTACLE WITH NEW. CONNECT TO EXISTING CIRCUIT IN EXISTING BOX.
- P02...**  
 REFER TO RISER ON E70 SERIES DRAWING (ADDITIONAL STATION AT TEACHING WALL AND TEACHERS WORK STATION ELEVATION).
- P03...**  
 LOCATE RECEPTACLE TO SERVE ELECTRIC WATER COOLER.
- P04...**  
 PROVIDE CONNECTION TO SHOWER LIGHT LIGHTING FIXTURE FURNISHED UNDER DIVISION 22 AND INSTALLED BY DIVISION 26.
- P05...**  
 PROVIDE CONNECTION TO DIVISION 27 CEILING MOUNTED SOUND ENHANCEMENT SYSTEM. COORDINATE WITH DIVISION 27.
- P06...**  
 LOCATE RECEPTACLES AND PROVISIONS FOR DATA IN KNEE SPACE OF DESK. COORDINATE WITH MILLWORK.
- P07...**  
 STAGE DIMMING SYSTEM DMX OPTO SPLITTER. REFER TO DETAIL (STAGE THEATRICAL DIMMING SYSTEM) ON E70 SERIES DRAWING.
- P08...**  
 DMX OUTLET. JUNCTION BOX WITH DMX OUTLET / FACELATE WITH DMX CABLE TO STAGE DIMMING SYSTEM OPTO SPLITTER LOCATED ON STAGE. RUN CABLE IN 1" CONDUIT. MOUNT C/L UP 24".
- P09...**  
 DMX OUTLET. JUNCTION BOX WITH DMX OUTLET / FACELATE WITH DMX CABLE TO STAGE DIMMING SYSTEM OPTO SPLITTER LOCATED ON STAGE. RUN CABLE IN 1" CONDUIT. MOUNT C/L UP 24".
- P10...**  
 DMX OUTLET. JUNCTION BOX WITH DMX OUTLET / FACELATE WITH DMX CABLE TO STAGE DIMMING SYSTEM OPTO SPLITTER LOCATED ON STAGE. RUN CABLE IN 1" CONDUIT. MOUNT C/L UP 24".
- P11...**  
 DMX OUTLET. JUNCTION BOX WITH DMX OUTLET / FACELATE WITH DMX CABLE TO STAGE DIMMING SYSTEM OPTO SPLITTER LOCATED ON STAGE. RUN CABLE IN 1" CONDUIT. MOUNT C/L UP 24".
- P12...**  
 PROVIDE CONNECTION TO TRAP PRIMER PANEL. COORDINATE WITH DIVISION 22.
- P13...**  
 PROVIDE CONNECTION TO DOMESTIC CIRCULATOR. COORDINATE WITH DIVISION 22.
- P14...**  
 PROVIDE CONNECTION TO SOIL GAS FAN (RADON FAN) AND FAN CONTROLLER. FAN LOCATED ON ROOF AND CONTROLLER LOCATED IN STORAGE 9B. COORDINATE WITH DIVISION 22.
- P15...**  
 PROVIDE CONNECTION TO MOTORIZED PROJECTION SCREEN AND SCREEN CONTROLLER. COORDINATE WITH EQUIPMENT FURNISHED. MAKE ALL FINAL CONNECTIONS.
- P16...**  
 WIRE 115VAC SHADE MOTOR (THREE CONDUCTOR PLUS GROUND) TO SYSTEM CONTROLLERS LOCATED IN GYM STORAGE 11C. MINIMUM FOUR MOTORS PER CONTROLLER. COORDINATE EXACT LOCATION OF EACH SHADE MOTOR WITH EQUIPMENT FURNISHED.
- P17...**  
 REFER TO DRAWING E20.3 FOR 1/4" SCALE PLAN.

- P18...**  
 REFER TO DRAWING E20.3 FOR 1/4" SCALE PLAN.
- P19...**  
 REFER TO DRAWING E20.3 FOR 1/4" SCALE PLAN.
- P20...**  
 REFER TO DRAWING E20.3 FOR 1/4" SCALE PLAN.
- P21...**  
 PROVIDE CONNECTION TO SOIL GAS FAN (RADON FAN) AND FAN CONTROLLER. FAN LOCATED ON ROOF AND CONTROLLER LOCATED IN STORAGE 9B. COORDINATE WITH DIVISION 22.
- P22...**  
 PROVIDE CONNECTION TO MOTORIZED PROJECTION SCREEN AND SCREEN CONTROLLER. COORDINATE WITH EQUIPMENT FURNISHED. MAKE ALL FINAL CONNECTIONS.
- P23...**  
 WIRE 115VAC SHADE MOTOR (THREE CONDUCTOR PLUS GROUND) TO SYSTEM CONTROLLERS LOCATED IN GYM STORAGE 11C. MINIMUM FOUR MOTORS PER CONTROLLER. COORDINATE EXACT LOCATION OF EACH SHADE MOTOR WITH EQUIPMENT FURNISHED.
- P24...**  
 REFER TO DRAWING E20.3 FOR 1/4" SCALE PLAN.
- P25...**  
 REFER TO DRAWING E20.3 FOR 1/4" SCALE PLAN.
- P26...**  
 REFER TO DRAWING E20.3 FOR 1/4" SCALE PLAN.
- P27...**  
 REFER TO DRAWING E20.3 FOR 1/4" SCALE PLAN.
- P28...**  
 REFER TO DRAWING E20.3 FOR 1/4" SCALE PLAN.
- P29...**  
 REFER TO DRAWING E20.3 FOR 1/4" SCALE PLAN.
- P30...**  
 REFER TO DRAWING E20.3 FOR 1/4" SCALE PLAN.
- P31...**  
 REFER TO DRAWING E20.3 FOR 1/4" SCALE PLAN.
- P32...**  
 REFER TO DRAWING E20.3 FOR 1/4" SCALE PLAN.
- P33...**  
 REFER TO DRAWING E20.3 FOR 1/4" SCALE PLAN.
- P34...**  
 REFER TO DRAWING E20.3 FOR 1/4" SCALE PLAN.
- P35...**  
 REFER TO DRAWING E20.3 FOR 1/4" SCALE PLAN.
- P36...**  
 REFER TO DRAWING E20.3 FOR 1/4" SCALE PLAN.
- P37...**  
 REFER TO DRAWING E20.3 FOR 1/4" SCALE PLAN.
- P38...**  
 REFER TO DRAWING E20.3 FOR 1/4" SCALE PLAN.
- P39...**  
 REFER TO DRAWING E20.3 FOR 1/4" SCALE PLAN.
- P40...**  
 REFER TO DRAWING E20.3 FOR 1/4" SCALE PLAN.
- P41...**  
 REFER TO DRAWING E20.3 FOR 1/4" SCALE PLAN.
- P42...**  
 REFER TO DRAWING E20.3 FOR 1/4" SCALE PLAN.
- P43...**  
 REFER TO DRAWING E20.3 FOR 1/4" SCALE PLAN.
- P44...**  
 REFER TO DRAWING E20.3 FOR 1/4" SCALE PLAN.
- P45...**  
 REFER TO DRAWING E20.3 FOR 1/4" SCALE PLAN.
- P46...**  
 REFER TO DRAWING E20.3 FOR 1/4" SCALE PLAN.
- P47...**  
 REFER TO DRAWING E20.3 FOR 1/4" SCALE PLAN.
- P48...**  
 REFER TO DRAWING E20.3 FOR 1/4" SCALE PLAN.
- P49...**  
 REFER TO DRAWING E20.3 FOR 1/4" SCALE PLAN.
- P50...**  
 REFER TO DRAWING E20.3 FOR 1/4" SCALE PLAN.
- P51...**  
 REFER TO DRAWING E20.3 FOR 1/4" SCALE PLAN.
- P52...**  
 REFER TO DRAWING E20.3 FOR 1/4" SCALE PLAN.
- P53...**  
 REFER TO DRAWING E20.3 FOR 1/4" SCALE PLAN.
- P54...**  
 REFER TO DRAWING E20.3 FOR 1/4" SCALE PLAN.
- P55...**  
 REFER TO DRAWING E20.3 FOR 1/4" SCALE PLAN.
- P56...**  
 REFER TO DRAWING E20.3 FOR 1/4" SCALE PLAN.
- P57...**  
 REFER TO DRAWING E20.3 FOR 1/4" SCALE PLAN.
- P58...**  
 REFER TO DRAWING E20.3 FOR 1/4" SCALE PLAN.
- P59...**  
 REFER TO DRAWING E20.3 FOR 1/4" SCALE PLAN.
- P60...**  
 REFER TO DRAWING E20.3 FOR 1/4" SCALE PLAN.

- P61...**  
 REFER TO DRAWING E20.3 FOR 1/4" SCALE PLAN.
- P62...**  
 REFER TO DRAWING E20.3 FOR 1/4" SCALE PLAN.
- P63...**  
 REFER TO DRAWING E20.3 FOR 1/4" SCALE PLAN.
- P64...**  
 REFER TO DRAWING E20.3 FOR 1/4" SCALE PLAN.
- P65...**  
 REFER TO DRAWING E20.3 FOR 1/4" SCALE PLAN.
- P66...**  
 REFER TO DRAWING E20.3 FOR 1/4" SCALE PLAN.
- P67...**  
 REFER TO DRAWING E20.3 FOR 1/4" SCALE PLAN.
- P68...**  
 REFER TO DRAWING E20.3 FOR 1/4" SCALE PLAN.
- P69...**  
 REFER TO DRAWING E20.3 FOR 1/4" SCALE PLAN.
- P70...**  
 REFER TO DRAWING E20.3 FOR 1/4" SCALE PLAN.
- P71...**  
 REFER TO DRAWING E20.3 FOR 1/4" SCALE PLAN.
- P72...**  
 REFER TO DRAWING E20.3 FOR 1/4" SCALE PLAN.
- P73...**  
 REFER TO DRAWING E20.3 FOR 1/4" SCALE PLAN.
- P74...**  
 REFER TO DRAWING E20.3 FOR 1/4" SCALE PLAN.
- P75...**  
 REFER TO DRAWING E20.3 FOR 1/4" SCALE PLAN.
- P76...**  
 REFER TO DRAWING E20.3 FOR 1/4" SCALE PLAN.
- P77...**  
 REFER TO DRAWING E20.3 FOR 1/4" SCALE PLAN.
- P78...**  
 REFER TO DRAWING E20.3 FOR 1/4" SCALE PLAN.
- P79...**  
 REFER TO DRAWING E20.3 FOR 1/4" SCALE PLAN.
- P80...**  
 REFER TO DRAWING E20.3 FOR 1/4" SCALE PLAN.
- P81...**  
 REFER TO DRAWING E20.3 FOR 1/4" SCALE PLAN.
- P82...**  
 REFER TO DRAWING E20.3 FOR 1/4" SCALE PLAN.
- P83...**  
 REFER TO DRAWING E20.3 FOR 1/4" SCALE PLAN.
- P84...**  
 REFER TO DRAWING E20.3 FOR 1/4" SCALE PLAN.
- P85...**  
 REFER TO DRAWING E20.3 FOR 1/4" SCALE PLAN.
- P86...**  
 REFER TO DRAWING E20.3 FOR 1/4" SCALE PLAN.
- P87...**  
 REFER TO DRAWING E20.3 FOR 1/4" SCALE PLAN.
- P88...**  
 REFER TO DRAWING E20.3 FOR 1/4" SCALE PLAN.
- P89...**  
 REFER TO DRAWING E20.3 FOR 1/4" SCALE PLAN.
- P90...**  
 REFER TO DRAWING E20.3 FOR 1/4" SCALE PLAN.
- P91...**  
 REFER TO DRAWING E20.3 FOR 1/4" SCALE PLAN.
- P92...**  
 REFER TO DRAWING E20.3 FOR 1/4" SCALE PLAN.
- P93...**  
 REFER TO DRAWING E20.3 FOR 1/4" SCALE PLAN.
- P94...**  
 REFER TO DRAWING E20.3 FOR 1/4" SCALE PLAN.
- P95...**  
 REFER TO DRAWING E20.3 FOR 1/4" SCALE PLAN.
- P96...**  
 REFER TO DRAWING E20.3 FOR 1/4" SCALE PLAN.
- P97...**  
 REFER TO DRAWING E20.3 FOR 1/4" SCALE PLAN.
- P98...**  
 REFER TO DRAWING E20.3 FOR 1/4" SCALE PLAN.
- P99...**  
 REFER TO DRAWING E20.3 FOR 1/4" SCALE PLAN.
- P100...**  
 REFER TO DRAWING E20.3 FOR 1/4" SCALE PLAN.

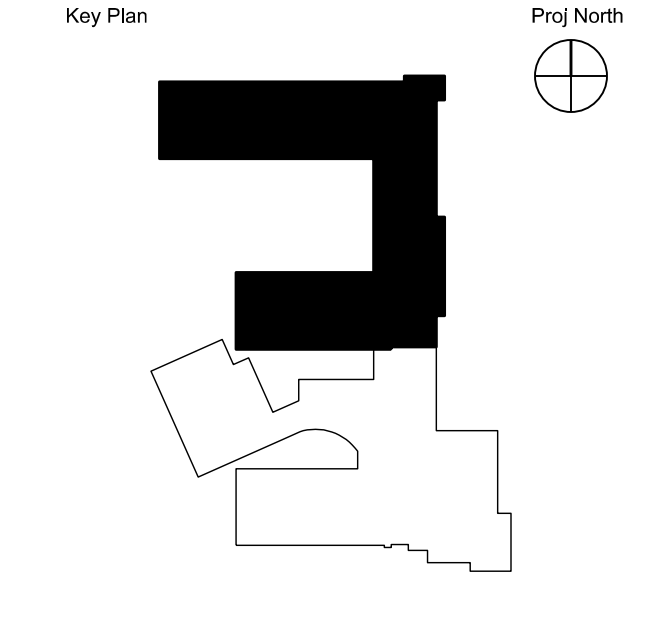
- P101...**  
 REFER TO DRAWING E20.3 FOR 1/4" SCALE PLAN.
- P102...**  
 REFER TO DRAWING E20.3 FOR 1/4" SCALE PLAN.
- P103...**  
 REFER TO DRAWING E20.3 FOR 1/4" SCALE PLAN.
- P104...**  
 REFER TO DRAWING E20.3 FOR 1/4" SCALE PLAN.
- P105...**  
 REFER TO DRAWING E20.3 FOR 1/4" SCALE PLAN.
- P106...**  
 REFER TO DRAWING E20.3 FOR 1/4" SCALE PLAN.
- P107...**  
 REFER TO DRAWING E20.3 FOR 1/4" SCALE PLAN.
- P108...**  
 REFER TO DRAWING E20.3 FOR 1/4" SCALE PLAN.
- P109...**  
 REFER TO DRAWING E20.3 FOR 1/4" SCALE PLAN.
- P110...**  
 REFER TO DRAWING E20.3 FOR 1/4" SCALE PLAN.
- P111...**  
 REFER TO DRAWING E20.3 FOR 1/4" SCALE PLAN.
- P112...**  
 REFER TO DRAWING E20.3 FOR 1/4" SCALE PLAN.
- P113...**  
 REFER TO DRAWING E20.3 FOR 1/4" SCALE PLAN.
- P114...**  
 REFER TO DRAWING E20.3 FOR 1/4" SCALE PLAN.
- P115...**  
 REFER TO DRAWING E20.3 FOR 1/4" SCALE PLAN.
- P116...**  
 REFER TO DRAWING E20.3 FOR 1/4" SCALE PLAN.
- P117...**  
 REFER TO DRAWING E20.3 FOR 1/4" SCALE PLAN.
- P118...**  
 REFER TO DRAWING E20.3 FOR 1/4" SCALE PLAN.
- P119...**  
 REFER TO DRAWING E20.3 FOR 1/4" SCALE PLAN.
- P120...**  
 REFER TO DRAWING E20.3 FOR 1/4" SCALE PLAN.
- P121...**  
 REFER TO DRAWING E20.3 FOR 1/4" SCALE PLAN.
- P122...**  
 REFER TO DRAWING E20.3 FOR 1/4" SCALE PLAN.
- P123...**  
 REFER TO DRAWING E20.3 FOR 1/4" SCALE PLAN.
- P124...**  
 REFER TO DRAWING E20.3 FOR 1/4" SCALE PLAN.
- P125...**  
 REFER TO DRAWING E20.3 FOR 1/4" SCALE PLAN.
- P126...**  
 REFER TO DRAWING E20.3 FOR 1/4" SCALE PLAN.
- P127...**  
 REFER TO DRAWING E20.3 FOR 1/4" SCALE PLAN.
- P128...**  
 REFER TO DRAWING E20.3 FOR 1/4" SCALE PLAN.
- P129...**  
 REFER TO DRAWING E20.3 FOR 1/4" SCALE PLAN.
- P130...**  
 REFER TO DRAWING E20.3 FOR 1/4" SCALE PLAN.
- P131...**  
 REFER TO DRAWING E20.3 FOR 1/4" SCALE PLAN.
- P132...**  
 REFER TO DRAWING E20.3 FOR 1/4" SCALE PLAN.
- P133...**  
 REFER TO DRAWING E20.3 FOR 1/4" SCALE PLAN.
- P134...**  
 REFER TO DRAWING E20.3 FOR 1/4" SCALE PLAN.
- P135...**  
 REFER TO DRAWING E20.3 FOR 1/4" SCALE PLAN.
- P136...**  
 REFER TO DRAWING E20.3 FOR 1/4" SCALE PLAN.
- P137...**  
 REFER TO DRAWING E20.3 FOR 1/4" SCALE PLAN.
- P138...**  
 REFER TO DRAWING E20.3 FOR 1/4" SCALE PLAN.
- P139...**  
 REFER TO DRAWING E20.3 FOR 1/4" SCALE PLAN.
- P140...**  
 REFER TO DRAWING E20.3 FOR 1/4" SCALE PLAN.

- P141...**  
 REFER TO DRAWING E20.3 FOR 1/4" SCALE PLAN.
- P142...**  
 REFER TO DRAWING E20.3 FOR 1/4" SCALE PLAN.
- P143...**  
 REFER TO DRAWING E20.3 FOR 1/4" SCALE PLAN.
- P144...**  
 REFER TO DRAWING E20.3 FOR 1/4" SCALE PLAN.
- P145...**  
 REFER TO DRAWING E20.3 FOR 1/4" SCALE PLAN.
- P146...**  
 REFER TO DRAWING E20.3 FOR 1/4" SCALE PLAN.
- P147...**  
 REFER TO DRAWING E20.3 FOR 1/4" SCALE PLAN.
- P148...**  
 REFER TO DRAWING E20.3 FOR 1/4" SCALE PLAN.
- P149...**  
 REFER TO DRAWING E20.3 FOR 1/4" SCALE PLAN.
- P150...**  
 REFER TO DRAWING E20.3 FOR 1/4" SCALE PLAN.
- P151...**  
 REFER TO DRAWING E20.3 FOR 1/4" SCALE PLAN.
- P152...**  
 REFER TO DRAWING E20.3 FOR 1/4" SCALE PLAN.
- P153...**  
 REFER TO DRAWING E20.3 FOR 1/4" SCALE PLAN.
- P154...**  
 REFER TO DRAWING E20.3 FOR 1/4" SCALE PLAN.
- P155...**  
 REFER TO DRAWING E20.3 FOR 1/4" SCALE PLAN.
- P156...**  
 REFER TO DRAWING E20.3 FOR 1/4" SCALE PLAN.
- P157...**  
 REFER TO DRAWING E20.3 FOR 1/4" SCALE PLAN.
- P158...**  
 REFER TO DRAWING E20.3 FOR 1/4" SCALE PLAN.
- P159...**  
 REFER TO DRAWING E20.3 FOR 1/4" SCALE PLAN.
- P160...**  
 REFER TO DRAWING E20.3 FOR 1/4" SCALE PLAN.
- P161...**  
 REFER TO DRAWING E20.3 FOR 1/4" SCALE PLAN.
- P162...**  
 REFER TO DRAWING E20.3 FOR 1/4" SCALE PLAN.
- P163...**  
 REFER TO DRAWING E20.3 FOR 1/4" SCALE PLAN.
- P164...**  
 REFER TO DRAWING E20.3 FOR 1/4" SCALE PLAN.
- P165...**  
 REFER TO DRAWING E20.3 FOR 1/4" SCALE PLAN.
- P166...**  
 REFER TO DRAWING E20.3 FOR 1/4" SCALE PLAN.
- P167...**  
 REFER TO DRAWING E20.3 FOR 1/4" SCALE PLAN.
- P168...**  
 REFER TO DRAWING E20.3 FOR 1/4" SCALE PLAN.
- P169...**  
 REFER TO DRAWING E20.3 FOR 1/4" SCALE PLAN.
- P170...**  
 REFER TO DRAWING E20.3 FOR 1/4" SCALE PLAN.
- P171...**  
 REFER TO DRAWING E20.3 FOR 1/4" SCALE PLAN.
- P172...**  
 REFER TO DRAWING E20.3 FOR 1/4" SCALE PLAN.
- P173...**  
 REFER TO DRAWING E20.3 FOR 1/4" SCALE PLAN.
- P174...**  
 REFER TO DRAWING E20.3 FOR 1/4" SCALE PLAN.
- P175...**  
 REFER TO DRAWING E20.3 FOR 1/4" SCALE PLAN.
- P176...**  
 REFER TO DRAWING E20.3 FOR 1/4" SCALE PLAN.
- P177...**  
 REFER TO DRAWING E20.3 FOR 1/4" SCALE PLAN.
- P178...**  
 REFER TO DRAWING E20.3 FOR 1/4" SCALE PLAN.
- P179...**  
 REFER TO DRAWING E20.3 FOR 1/4" SCALE PLAN.
- P180...**  
 REFER TO DRAWING E20.3 FOR 1/4" SCALE PLAN.

- P181...**  
 REFER TO DRAWING E20.3 FOR 1/4" SCALE PLAN.
- P182...**  
 REFER TO DRAWING E20.3 FOR 1/4" SCALE PLAN.
- P183...**  
 REFER TO DRAWING E20.3 FOR 1/4" SCALE PLAN.
- P184...**  
 REFER TO DRAWING E20.3 FOR 1/4" SCALE PLAN.
- P185...**  
 REFER TO DRAWING E20.3 FOR 1/4" SCALE PLAN.
- P186...**  
 REFER TO DRAWING E20.3 FOR 1/4" SCALE PLAN.
- P187...**  
 REFER TO DRAWING E20.3 FOR 1/4" SCALE PLAN.
- P188...**  
 REFER TO DRAWING E20.3 FOR 1/4" SCALE PLAN.
- P189...**  
 REFER TO DRAWING E20.3 FOR 1/4" SCALE PLAN.
- P190...**  
 REFER TO DRAWING E20.3 FOR 1/4" SCALE PLAN.
- P191...**  
 REFER TO DRAWING E20.3 FOR 1/4" SCALE PLAN.
- P192...**  
 REFER TO DRAWING E20.3 FOR 1/4" SCALE PLAN.
- P193...**  
 REFER TO DRAWING E20.3 FOR 1/4" SCALE PLAN.
- P194...**  
 REFER TO DRAWING E20.3 FOR 1/4" SCALE PLAN.
- P195...**  
 REFER TO DRAWING E20.3 FOR 1/4" SCALE PLAN.
- P196...**  
 REFER TO DRAWING E20.3 FOR 1/4" SCALE PLAN.
- P197...**  
 REFER TO DRAWING E20.3 FOR 1/4" SCALE PLAN.
- P198...**  
 REFER TO DRAWING E20.3 FOR 1/4" SCALE PLAN.
- P199...**  
 REFER TO DRAWING E20.3 FOR 1/4" SCALE PLAN.
- P200...**  
 REFER TO DRAWING E20.3 FOR 1/4" SCALE PLAN.
- P201...**  
 REFER TO DRAWING E20.3 FOR 1/4" SCALE PLAN.
- P202...**  
 REFER TO DRAWING E20.3 FOR 1/4" SCALE PLAN.
- P203...**  
 REFER TO DRAWING E20.3 FOR 1/4" SCALE PLAN.
- P204...**  
 REFER TO DRAWING E20.3 FOR 1/4" SCALE PLAN.
- P205...**  
 REFER TO DRAWING E20.3 FOR 1/4" SCALE PLAN.
- P206...**  
 REFER TO DRAWING E20.3 FOR 1/4" SCALE PLAN.
- P207...**  
 REFER TO DRAWING E20.3 FOR 1/4" SCALE PLAN.
- P208...**  
 REFER TO DRAWING E20.3 FOR 1/4" SCALE PLAN.
- P209...**  
 REFER TO DRAWING E20.3 FOR 1/4" SCALE PLAN.
- P210...**  
 REFER TO DRAWING E20.3 FOR 1/4" SCALE PLAN.
- P211...**  
 REFER TO DRAWING E20.3 FOR 1/4" SCALE PLAN.
- P212...**  
 REFER TO DRAWING E20.3 FOR 1/4" SCALE PLAN.
- P213...**  
 REFER TO DRAWING E20.3 FOR 1/4" SCALE PLAN.
- P214...**  
 REFER TO DRAWING E20.3 FOR 1/4" SCALE PLAN.
- P215...**  
 REFER TO DRAWING E20.3 FOR 1/4" SCALE PLAN.
- P216...**  
 REFER TO DRAWING E20.3 FOR 1/4" SCALE PLAN.
- P217...**  
 REFER TO DRAWING E20.3 FOR 1/4" SCALE PLAN.
- P218...**  
 REFER TO DRAWING E20.3 FOR 1/4" SCALE PLAN.
- P219...**  
 REFER TO DRAWING E20.3 FOR 1/4" SCALE PLAN.
- P220...**  
 REFER TO DRAWING E20.3 FOR 1/4" SCALE PLAN.
- P221...**  
 REFER TO DRAWING E20.3 FOR 1/4" SCALE PLAN.
- P222...**  
 REFER TO DRAWING E20.3 FOR 1/4" SCALE PLAN.
- P223...**  
 REFER TO DRAWING E20.3 FOR 1/4" SCALE PLAN.
- P224...**  
 REFER TO DRAWING E20.3 FOR 1/4" SCALE PLAN.
- P225...**  
 REFER TO DRAWING E20.3 FOR 1/4" SCALE PLAN.
- P226...**  
 REFER TO DRAWING E20.3 FOR 1/4" SCALE PLAN.
- P227...**  
 REFER TO DRAWING E20.3 FOR 1/4" SCALE PLAN.
- P228...**  
 REFER TO DRAWING E20.3 FOR 1/4" SCALE PLAN.
- P229...**  
 REFER TO DRAWING E20.3 FOR 1/4" SCALE PLAN.
- P230...**  
 REFER TO DRAWING E20.3 FOR 1/4" SCALE PLAN.

- P231...**  
 REFER TO DRAWING E20.3 FOR 1/4" SCALE PLAN.
- P232...**  
 REFER TO DRAWING E20.3 FOR 1/4" SCALE PLAN.
- P233...**  
 REFER TO DRAWING E20.3 FOR 1/4" SCALE PLAN.
- P234...**  
 REFER TO DRAWING E20.3 FOR 1/4" SCALE PLAN.
- P235...**  
 REFER TO DRAWING E20.3 FOR 1/4" SCALE PLAN.
- P236...**  
 REFER TO DRAWING E20.3 FOR 1/4" SCALE PLAN.
- P237...**  
 REFER TO DRAWING E20.3 FOR 1/4" SCALE PLAN.
- P238...**  
 REFER TO DRAWING E20.3 FOR 1/4" SCALE PLAN.
- P239...**  
 REFER TO DRAWING E20.3 FOR 1/4" SCALE PLAN.
- P240...**  
 REFER TO DRAWING E20.3 FOR 1/4" SCALE PLAN.
- P241...**  
 REFER TO DRAWING E20.3 FOR 1/4" SCALE PLAN.
- P242...**  
 REFER TO DRAWING E20.3 FOR 1/4" SCALE PLAN.
- P243...**  
 REFER TO DRAWING E20.3 FOR 1/4" SCALE PLAN.
- P244...**  
 REFER TO DRAWING E20.3 FOR 1/4" SCALE PLAN.
- P245...**  
 REFER TO DRAWING E20.3 FOR 1/4" SCALE PLAN.
- P246...**  
 REFER TO DRAWING E20.3 FOR 1/4" SCALE PLAN.
- P247...**  
 REFER TO DRAWING E20.3 FOR 1/4" SCALE PLAN.
- P248...**  
 REFER TO DRAWING E20.3 FOR 1/4" SCALE PLAN.
- P249...**  
 REFER TO DRAWING E20.3 FOR 1/4" SCALE PLAN.
- P250...**  
 REFER TO DRAWING E20.3 FOR 1/4" SCALE PLAN.
- P251...**  
 REFER TO DRAWING E20.3 FOR 1/4" SCALE PLAN.
- P252...**  
 REFER TO DRAWING E20.3 FOR 1/4" SCALE PLAN.
- P253...**  
 REFER TO DRAWING E20.3 FOR 1/4" SCALE PLAN.
- P254...**  
 REFER TO DRAWING E20.3 FOR 1/4" SCALE PLAN.
- P255...**





Key Plan  
Proj North

**KEY NOTES:**

- AL2. BASE BID: EXISTING UNIT VENTILATOR REMAINS. NO PROVISIONS FOR DIVISION 23 TEMPERATURE SENSOR.
- AL3. BASE BID: PROVIDE CONNECTION TO NEW UNIT VENTILATOR. PROVIDE PROVISIONS FOR DIVISION 23 TEMPERATURE SENSOR.
- AL5. BASE BID: NO PROVISIONS PROVIDED. ADD ALTERNATE #5. PROVIDE PROVISIONS FOR DIVISION 23 TEMPERATURE SENSOR.
- P02. REFER TO DETAIL ON E70 SERIES DRAWING (AUDIOVISUAL STATION AT TEACHING WALL AND TEACHERS WORK STATION ELEVATION).
- P03. LOCATE RECEPTACLE TO SERVE ELECTRIC WATER COOLER.
- P04. REFER TO DETAIL ON E70 SERIES DRAWING (AUDIOVISUAL STATION AT TEACHING WALL AND TEACHERS WORK STATION ELEVATION - SURFACE MOUNTED PATHWAYS AND BOXES).
- P06. PROVIDE CONNECTION TO DIVISION 27 CEILING MOUNTED SOUND ENHANCEMENT SYSTEM. COORDINATE WITH DIVISION 27.
- P07. PROVIDE CONNECTION TO DIVISION 27 WALL MOUNTED SOUND ENHANCEMENT SYSTEM. MOUNT CL UP 8". COORDINATE WITH DIVISION 27.
- P16. RUN 2#10 A.W.G. TO GFCI RECEPTACLE IN NEMA-3R ENCLOSURE. LOCATE ADJACENT TO ROOF MOUNTED HVAC EQUIPMENT.
- P27. FIELD LOCATE REPLACES AND PLUGMOLD IN THIS ROOM AND REPLACE WITH TAMPER RESISTANT.
- P34. PROVIDE CONNECTION TO DIVISION 08 POWER SUPPLY. POWER SUPPLIES WILL BE LOCATED ABOVE AN ACCESSIBLE CEILING IN THE VICINITY OF THE DOOR. COORDINATE EXACT LOCATION OF POWER SUPPLY WITH DIVISION 08.
- P35. PROVIDE CONNECTION TO DIVISION 08 DOOR OPERATORS. PROVIDE JUNCTION BOX WITH ONE 3/4" CONDUIT FOR EACH OPERATOR PADDLE TO THE ASSOCIATED MOTOR OPERATOR (TWO PER OPERATOR/DOOR). MOUNT JUNCTION BOX CL UP 48". COORDINATE LOCATIONS OF OPERATOR PADDLES AND CONNECTIONS WITH DIVISION 08.
- T03. PROVISIONS FOR DIVISION 27 CABLING. PROVIDE ONE 4" CONDUIT SLEEVE WITH FIRESTOP PLUG ABOVE CEILING TO ALLOW PASSAGE OF DIVISION 27 CABLING AND MAINTAIN RATING OF WALL.
- T05. PROVISIONS FOR DIVISION 27 CABLING. PROVIDE FOUR 4" CONDUIT SLEEVES WITH FIRESTOP PLUGS ABOVE CEILING TO ALLOW PASSAGE OF DIVISION 27 CABLING AND MAINTAIN RATING OF WALL.
- T06. PROVISIONS FOR DIVISION 27 EXTERIOR WALL MOUNTED SPEAKER. BACKBOX FURNISHED UNDER DIVISION 27 AND INSTALLED UNDER DIVISION 26. DIVISION 26 SHALL PROVIDE ONE 1" CONDUIT FROM BACKBOX TO ABOVE AN ACCESSIBLE CORRIDOR CEILING. MOUNT CL UP 12".
- T07. PROVISIONS FOR DIVISION 27 WIRELESS ACCESS POINT. MOUNT CL UP 10".
- RP1. REFER TO DRAWING E20.3 FOR 1/4" SCALE PLAN.

**SLEEVES**

SLEEVES SHOWN ON THIS DRAWINGS ARE INTENDED FOR DIVISION 27 USE ONLY. FURNISH AND INSTALL SLEEVES REQUIRED IN ADDITION TO SLEEVES SHOWN ON THE DRAWINGS. REFER TO 26010, PART 3 (SLEEVES, INSERTS AND OPENINGS). PROVIDE ADDITIONAL SLEEVES FOR DIVISION 27 WHERE REQUIRED, COORDINATE WITH DIVISION 27. ALL SLEEVES SHALL BE CONCEALED ABOVE CEILING. EACH END OF THE SLEEVE SHALL BE ACCESSIBLE FROM BELOW AN ACCESSIBLE CEILING.

**GENERAL NOTES**

- 1. RECEPTACLES AND FACEPLATES LOCATED ON WALLS WITH "MAX-HITE" #8 SHALL BE WHITE. REFER TO ARCHITECTURAL INTERIOR ELEVATIONS FOR LOCATIONS.
- 2. DIVISION 26 SHALL PROVIDE PATHWAYS AND BOXES REQUIRED FOR ALL DIVISION 28 (SECURITY SYSTEMS) APPLIANCES AND DEVICES. PATHWAYS SHALL RUN FROM APPLIANCE / DEVICE TO ABOVE AN ACCESSIBLE CEILING. DIVISION 26 SHALL ALSO PULL WIRING / CABLING AND MOUNT ALL APPLIANCES AND DEVICES. FURNISHED BY THE DIVISION 28 (SECURITY SYSTEMS) VENDOR. COORDINATE WITH INCLUDED DIVISION 28 (SECURITY SYSTEMS) DRAWINGS.
- 3. PROVIDE PATHWAYS TO ACCOMMODATE DEVICES AND APPLIANCES REQUIRED IN SPECIFICATION SECTION 08071 DOOR HARDWARE SETS.

CONNECTIONS TO TEMPORARILY RELOCATED PORTABLE CLASSROOM BUILDING FROM ELDSWHERE ON SITE (REFER TO DRAWING E20.1).

1. PROVIDE TEMPORARY FEED WITH #8 FEEDER FROM PANELBOARD L7.
2. PROVIDE FIRE ALARM SYSTEM CONNECTION.
3. PROVIDE PATHWAY FOR DIVISION 27 COMMUNICATIONS CABLING.

PROVIDE FANN AND VOICE IN A SINGLE CABINET. PROVIDE SURFACE CABINET.

OTHER THAN NEW ITEMS SHOWN EXISTING PANELBOARDS, EQUIPMENT CONNECTIONS, BRANCH WIRING, ETC., SHALL REMAIN. SYSTEMS / ITEMS TO BE COMPLETELY REPLACED:

1. FIRE ALARM.
2. REPLACE RECEPTACLES WITH TAMPER RESISTANT. CONNECT TO EXISTING CIRCUIT.
3. PROVISIONS FOR PUBLIC ADDRESS.
4. PROVISIONS FOR CENTRAL CLOCK.
5. PROVISIONS FOR COMMUNICATIONS JACKS.
6. PROVISIONS FOR INTRUSION DETECTION. PUBLIC ADDRESS, CENTRAL CLOCK, INTRUSION DETECTION AND COMMUNICATIONS SYSTEMS BY DIVISION 27.

OTHER THAN NEW ITEMS SHOWN EXISTING PANELBOARDS, EQUIPMENT CONNECTIONS, BRANCH WIRING, ETC., SHALL REMAIN. SYSTEMS / ITEMS TO BE COMPLETELY REPLACED:

1. FIRE ALARM.
2. REPLACE RECEPTACLES WITH TAMPER RESISTANT. CONNECT TO EXISTING CIRCUIT.
3. PROVISIONS FOR PUBLIC ADDRESS.
4. PROVISIONS FOR CENTRAL CLOCK.
5. PROVISIONS FOR COMMUNICATIONS JACKS.
6. PROVISIONS FOR INTRUSION DETECTION. PUBLIC ADDRESS, CENTRAL CLOCK, INTRUSION DETECTION AND COMMUNICATIONS SYSTEMS BY DIVISION 27.

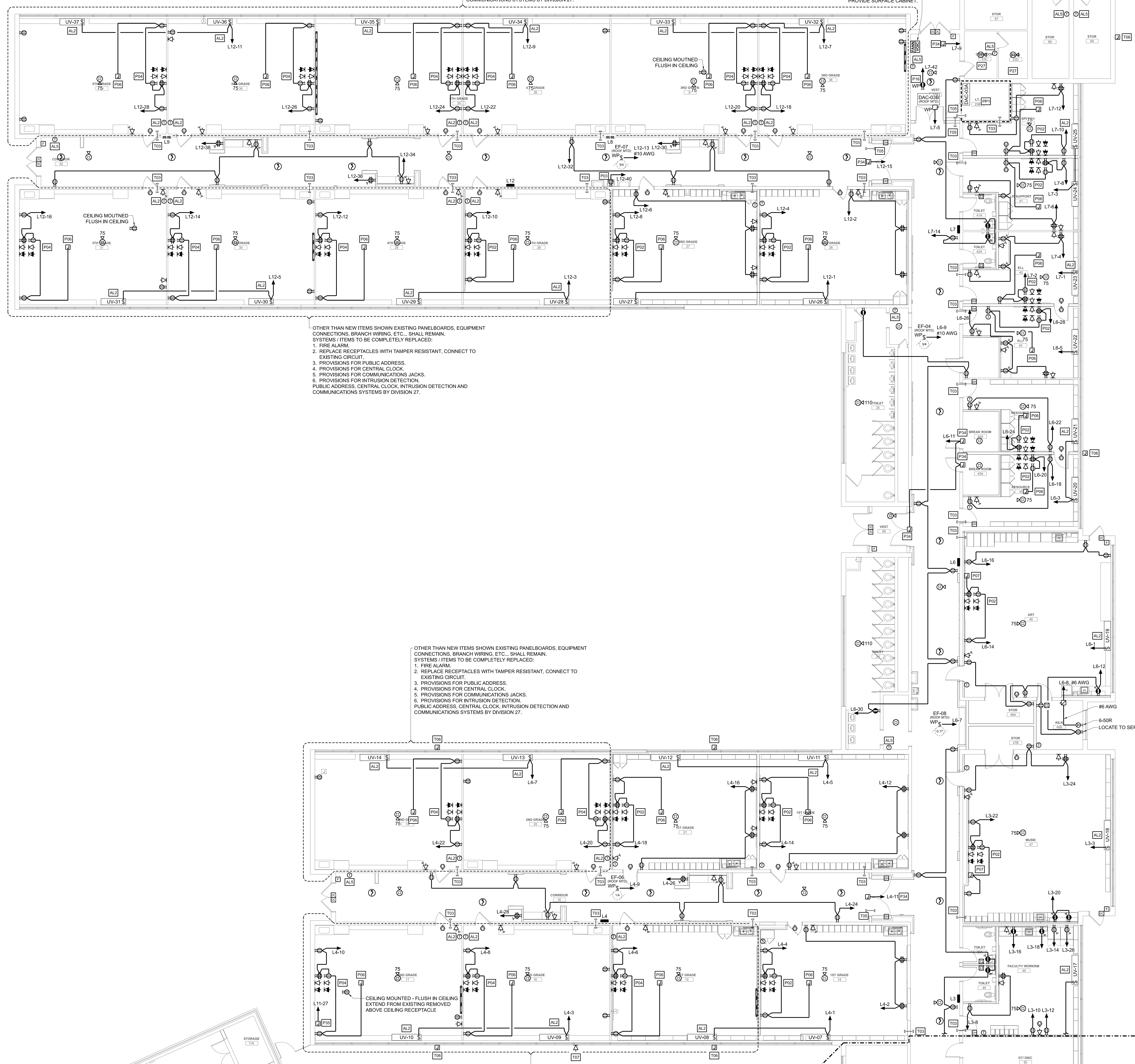
OTHER THAN NEW ITEMS SHOWN EXISTING PANELBOARDS, EQUIPMENT CONNECTIONS, BRANCH WIRING, ETC., SHALL REMAIN. SYSTEMS / ITEMS TO BE COMPLETELY REPLACED:

1. FIRE ALARM.
2. REPLACE RECEPTACLES WITH TAMPER RESISTANT. CONNECT TO EXISTING CIRCUIT.
3. PROVISIONS FOR PUBLIC ADDRESS.
4. PROVISIONS FOR CENTRAL CLOCK.
5. PROVISIONS FOR COMMUNICATIONS JACKS.
6. PROVISIONS FOR INTRUSION DETECTION. PUBLIC ADDRESS, CENTRAL CLOCK, INTRUSION DETECTION AND COMMUNICATIONS SYSTEMS BY DIVISION 27.

OTHER THAN NEW ITEMS SHOWN EXISTING PANELBOARDS, EQUIPMENT CONNECTIONS, BRANCH WIRING, ETC., SHALL REMAIN. SYSTEMS / ITEMS TO BE COMPLETELY REPLACED:

1. FIRE ALARM.
2. REPLACE RECEPTACLES WITH TAMPER RESISTANT. CONNECT TO EXISTING CIRCUIT.
3. PROVISIONS FOR PUBLIC ADDRESS.
4. PROVISIONS FOR CENTRAL CLOCK.
5. PROVISIONS FOR COMMUNICATIONS JACKS.
6. PROVISIONS FOR INTRUSION DETECTION. PUBLIC ADDRESS, CENTRAL CLOCK, INTRUSION DETECTION AND COMMUNICATIONS SYSTEMS BY DIVISION 27.

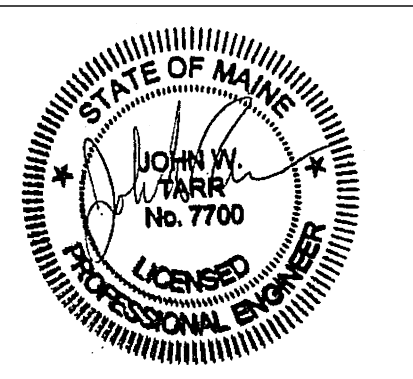
AREA B - DRAWING E20.2  
AREA A - DRAWING E20.1



**1 FLOOR PLAN - AREA B - POWER AND SYSTEMS**  
SCALE: 1/8" = 1'-0"  
DATE: 03-15-19

Issues and Revisions

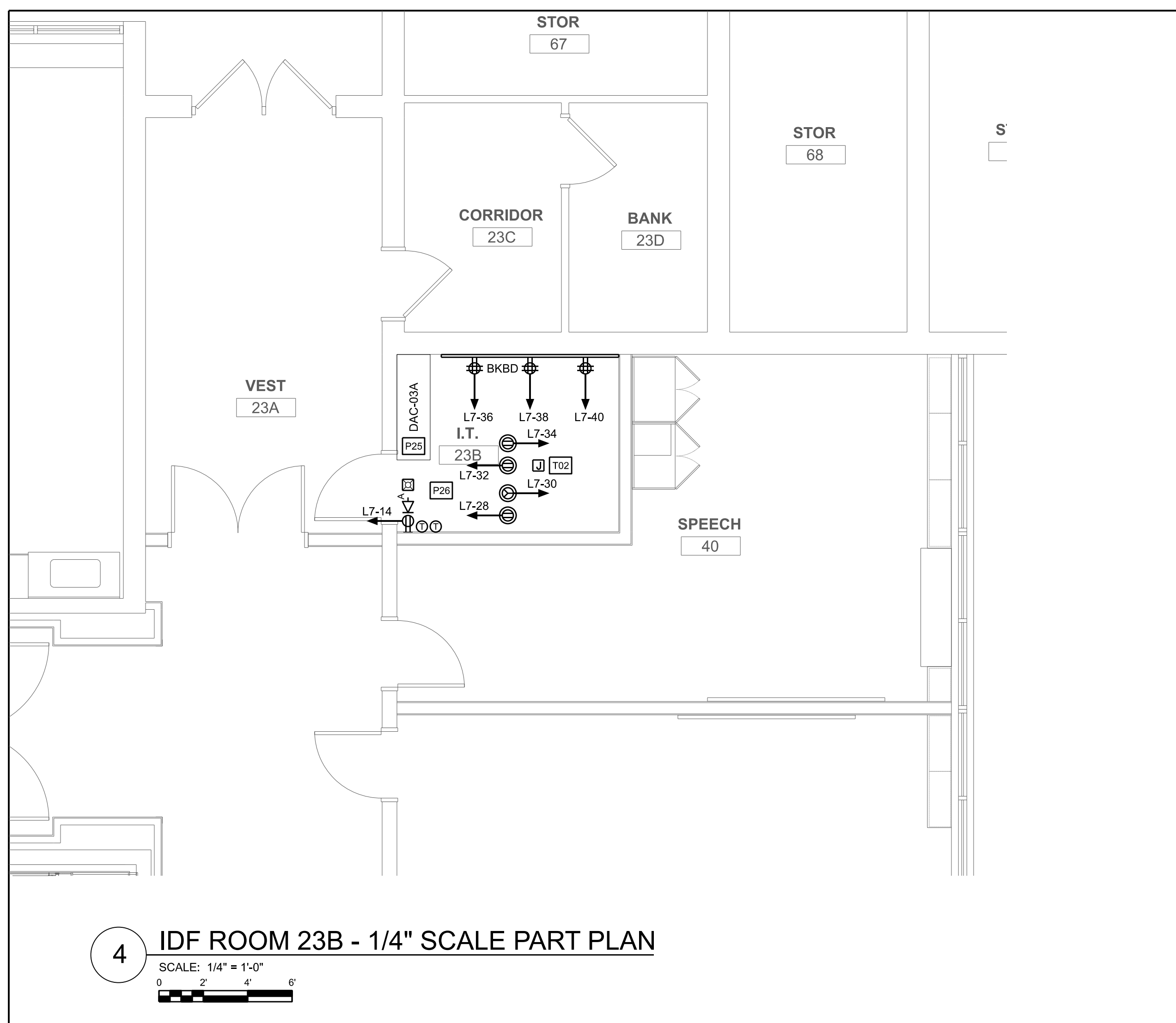
Date	Description
12-05-18	DESIGN DEVELOPMENT
01-20-19	FINAL REVIEW
03-15-19	CONSTRUCTION DOCUMENTS
03-08-19	ADDENDUM #1
06-07-19	CONFORMANCE SET



PA/PE: JWL © 2019  
Drawn By: JMB Harriman Associates

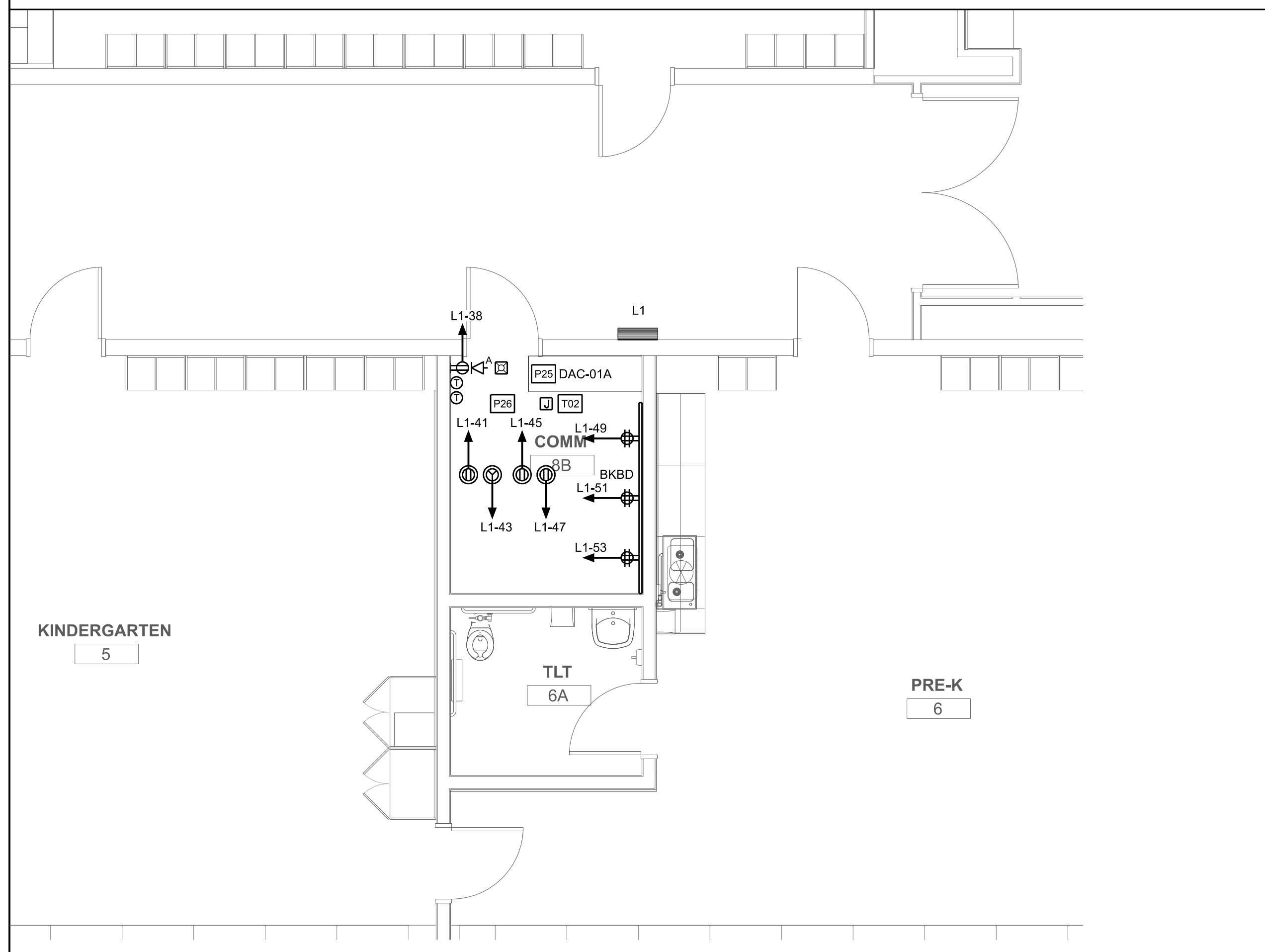
**FIRST FLOOR PLAN  
AREA B  
POWER AND SYSTEMS**

**E20.2**



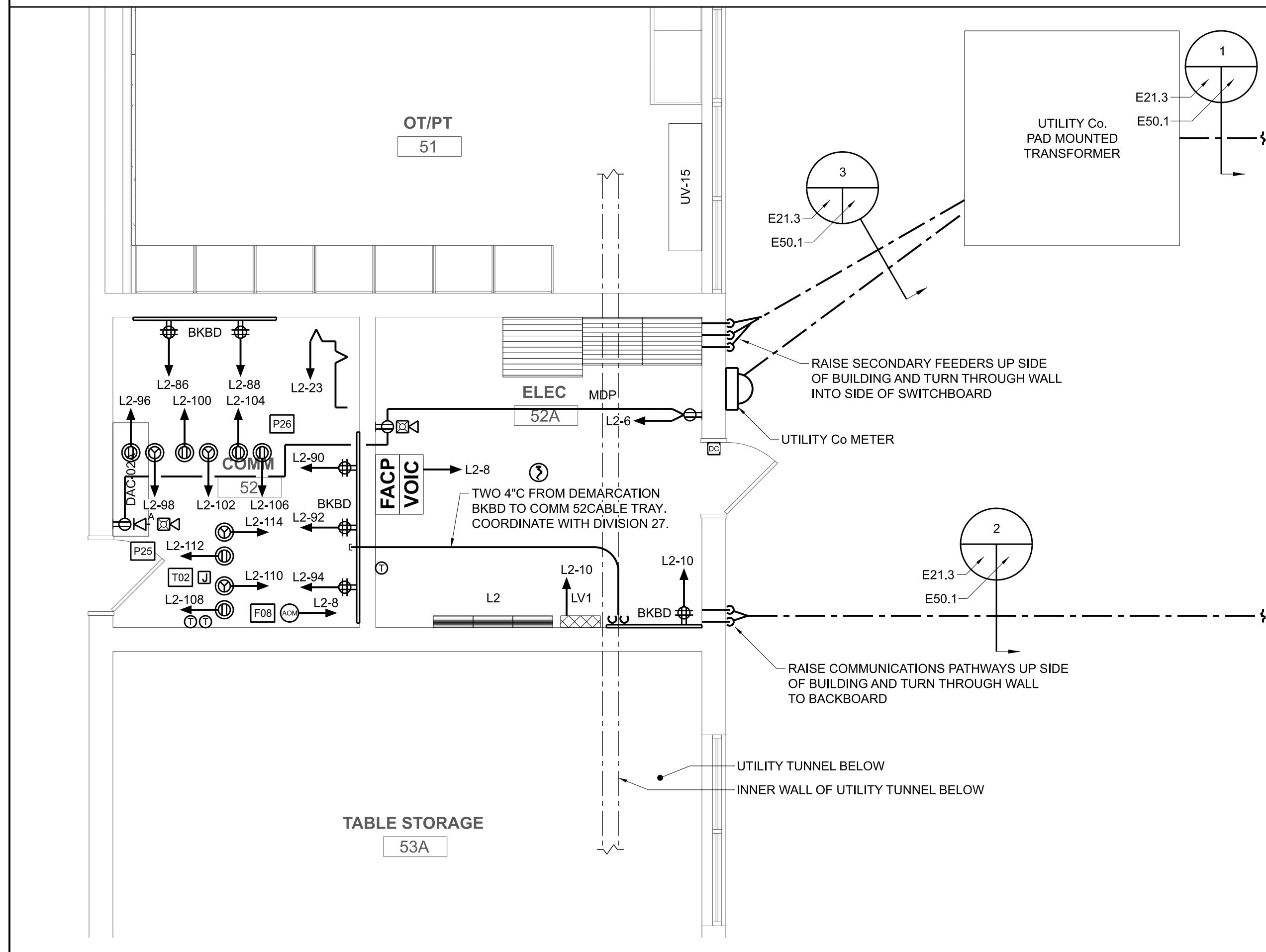
4 IDF ROOM 23B - 1/4" SCALE PART PLAN

SCALE: 1/4" = 1'-0"  
0 2 4 6



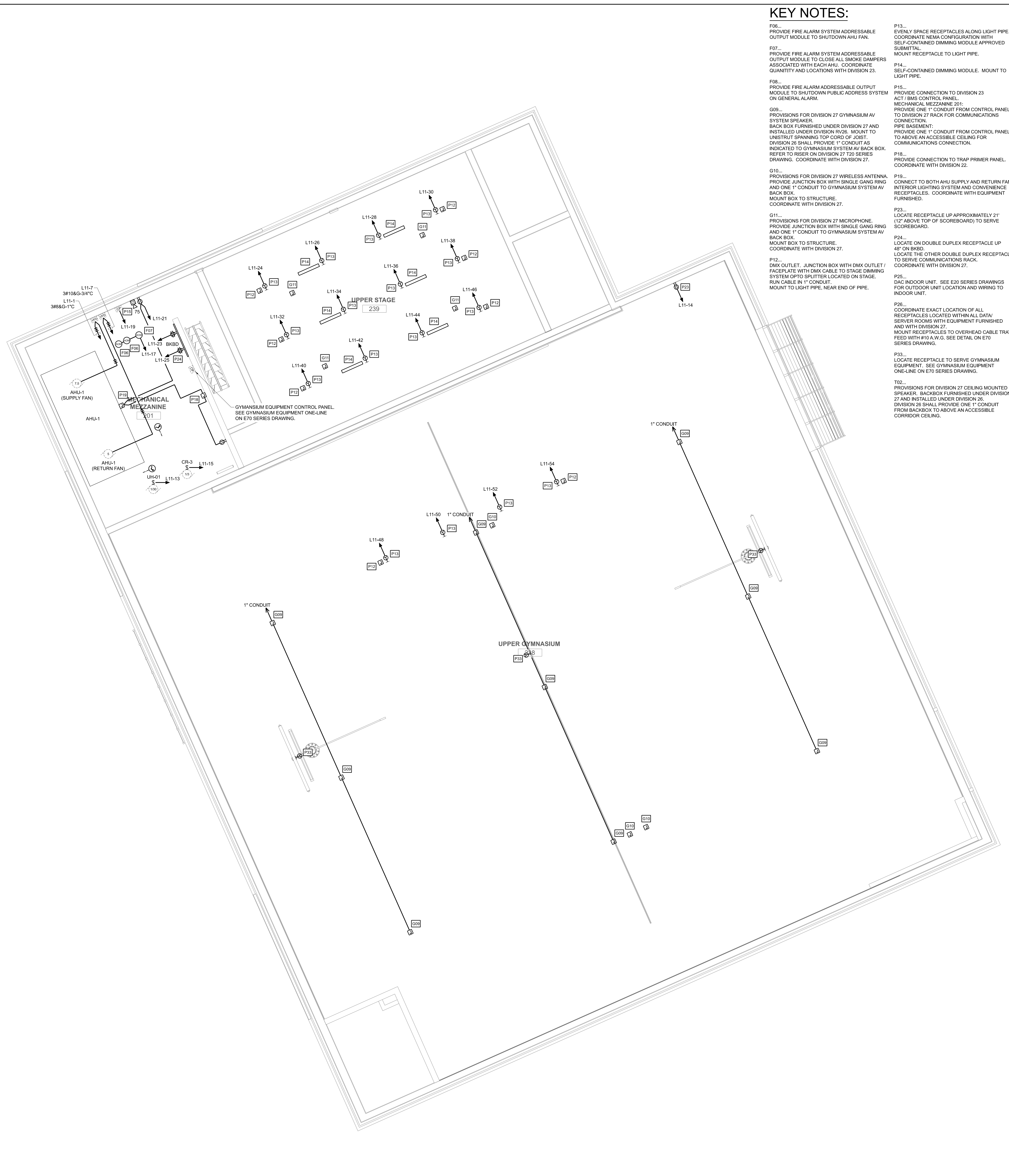
3 IDF ROOM 6A - 1/4" SCALE PART PLAN

SCALE: 1/4" = 1'-0"  
0 2 4 6



1 MDF ROOM 52 - 1/4" SCALE PART PLAN

SCALE: 1/4" = 1'-0"  
0 2 4 6



2 FLOOR PLAN - AREA A - POWER AND SYSTEMS

SCALE: 1/4" = 1'-0"  
0 2 4 6

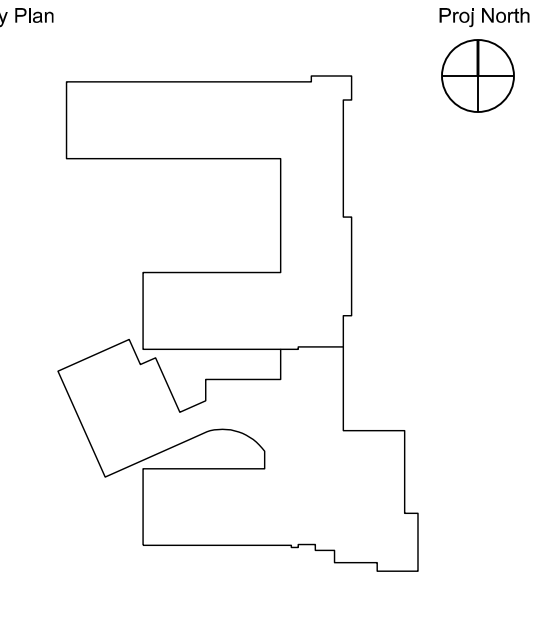
**KEY NOTES:**

- F16. PROVIDE FIRE ALARM SYSTEM ADDRESSABLE OUTPUT MODULE TO SHUTDOWN AHU FAN.
- F17. PROVIDE FIRE ALARM SYSTEM ADDRESSABLE OUTPUT MODULE TO CLOSE ALL SMOKE DAMPERS ASSOCIATED WITH EACH AHU. COORDINATE QUANTITY AND LOCATIONS WITH DIVISION 23.
- F18. PROVIDE FIRE ALARM ADDRESSABLE OUTPUT MODULE TO SHUTDOWN PUBLIC ADDRESS SYSTEM ON GENERAL ALARM.
- G09. PROVISIONS FOR DIVISION 27 GYMNASIUM AV SYSTEM SPEAKER. BACK BOX FURNISHED UNDER DIVISION 27 AND INSTALLED UNDER DIVISION 26. MOUNT TO UNBUILT BRANDED TOP CORO OF JOIST. DIVISION 26 SHALL PROVIDE 1" CONDUIT AS INDICATED TO GYMNASIUM SYSTEM AV BACK BOX. REFER TO RISER ON DIVISION 27 T20 SERIES DRAWING. COORDINATE WITH DIVISION 27.
- G10. PROVISIONS FOR DIVISION 27 WIRELESS ANTENNA. PROVIDE JUNCTION BOX WITH SINGLE GANG RING AND ONE 1" CONDUIT TO GYMNASIUM SYSTEM AV BACK BOX. MOUNT BOX TO STRUCTURE. COORDINATE WITH DIVISION 27.
- G11. PROVISIONS FOR DIVISION 27 MICROPHONE. PROVIDE JUNCTION BOX WITH SINGLE GANG RING AND ONE 1" CONDUIT TO GYMNASIUM SYSTEM AV BACK BOX. MOUNT BOX TO STRUCTURE. COORDINATE WITH DIVISION 27.
- P12. DMX OUTLET. JUNCTION BOX WITH DMX OUTLET / FACEPLATE WITH DMX CABLE TO STAGE DIMMING SYSTEM OPTO SPLITTER LOCATED ON STAGE. RUN CABLE IN 1" CONDUIT. MOUNT TO LIGHT PIPE, NEAR END OF PIPE.
- P13. EVENLY SPACE RECEPTACLES ALONG LIGHT PIPE. COORDINATE NEMA CONFIGURATION WITH SELF-CONTAINED DIMMING MODULE. APPROVED SUBMITTAL. MOUNT RECEPTACLE TO LIGHT PIPE.
- P14. SELF-CONTAINED DIMMING MODULE. MOUNT TO LIGHT PIPE.
- P15. PROVIDE CONNECTION TO DIVISION 23 ACT / BMS CONTROL PANEL. MECHANICAL MEZZANINE 201. PROVIDE ONE 1" CONDUIT FROM CONTROL PANEL TO DIVISION 27 RACK FOR COMMUNICATIONS CONNECTION. PIPE BASEMENT: PROVIDE ONE 1" CONDUIT FROM CONTROL PANEL TO ABOVE AN ACCESSIBLE CEILING FOR COMMUNICATIONS CONNECTION.
- P18. PROVIDE CONNECTION TO TRAP PRIMER PANEL. COORDINATE WITH DIVISION 22.
- P19. CONNECT TO BOTH AHU SUPPLY AND RETURN FAN INTERIOR LIGHTING SYSTEM AND CONVENIENCE RECEPTACLES. COORDINATE WITH EQUIPMENT FURNISHED.
- P23. LOCATE RECEPTACLE UP APPROXIMATELY 21" (12" ABOVE TOP OF SCOREBOARD) TO SERVE SCOREBOARD.
- P24. LOCATE ON DOUBLE DUPLEX RECEPTACLE UP 48" ON BKBD. LOCATE THE OTHER DOUBLE DUPLEX RECEPTACLE TO SERVE COMMUNICATIONS RACK. COORDINATE WITH DIVISION 27.
- P25. DAC INDOOR UNIT. SEE E20 SERIES DRAWINGS FOR OUTDOOR UNIT LOCATION AND WIRING TO INDOOR UNIT.
- P26. COORDINATE EXACT LOCATION OF ALL RECEPTACLES LOCATED WITHIN ALL DATA/ SERVER ROOMS WITH EQUIPMENT FURNISHED AND WITH DIVISION 27. MOUNT RECEPTACLES TO OVERHEAD CABLE TRAY. FEED WITH #10 AWG. SEE DETAIL ON E70 SERIES DRAWING.
- P33. LOCATE RECEPTACLE TO SERVE GYMNASIUM EQUIPMENT. SEE GYMNASIUM EQUIPMENT ONE-LINE ON E70 SERIES DRAWING.
- T02. PROVISIONS FOR DIVISION 27 CEILING MOUNTED SPEAKER. BACKBOX FURNISHED UNDER DIVISION 27 AND INSTALLED UNDER DIVISION 26. DIVISION 26 SHALL PROVIDE ONE 1" CONDUIT FROM BACKBOX TO ABOVE AN ACCESSIBLE CORRIDOR CEILING.



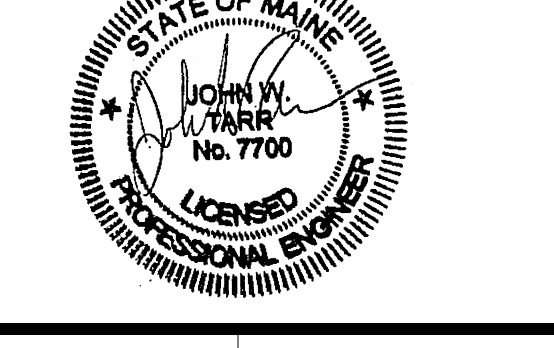
**HARRISON LYSETH ELEMENTARY SCHOOL**

PORTLAND, MAINE  
Harriman Project No. 18483



Issues and Revisions

Date	Description
01-30-19	FINAL REVIEW
02-13-19	CONSTRUCTION DOCUMENTS
03-08-19	ADDENDUM #1
06-07-19	CONFORMANCE SET



PA/PE: JWT  
Drawn By: JMB

**SECOND FLOOR PLAN AREA A & 1/4" SCALE PLANS POWER AND SYSTEMS**

**E20.3**