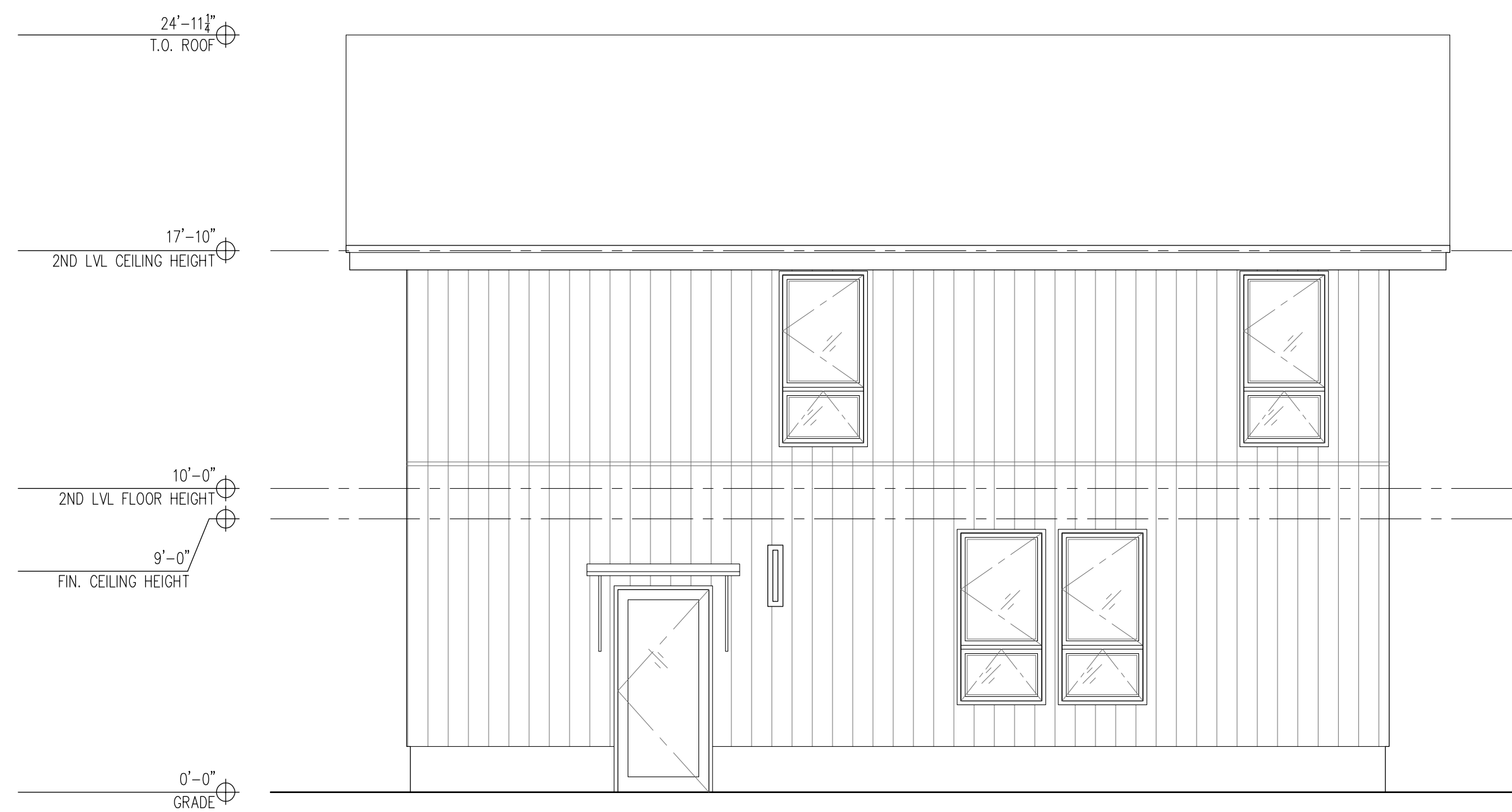


4 | EAST ELEVATION
SCALE: 1/4"=1'-0"



3 | NORTH ELEVATION
SCALE: 1/4"=1'-0"



2 | WEST ELEVATION
SCALE: 1/4"=1'-0"



1 | SOUTH ELEVATION
SCALE: 1/4"=1'-0"

NOT FOR CONSTRUCTION