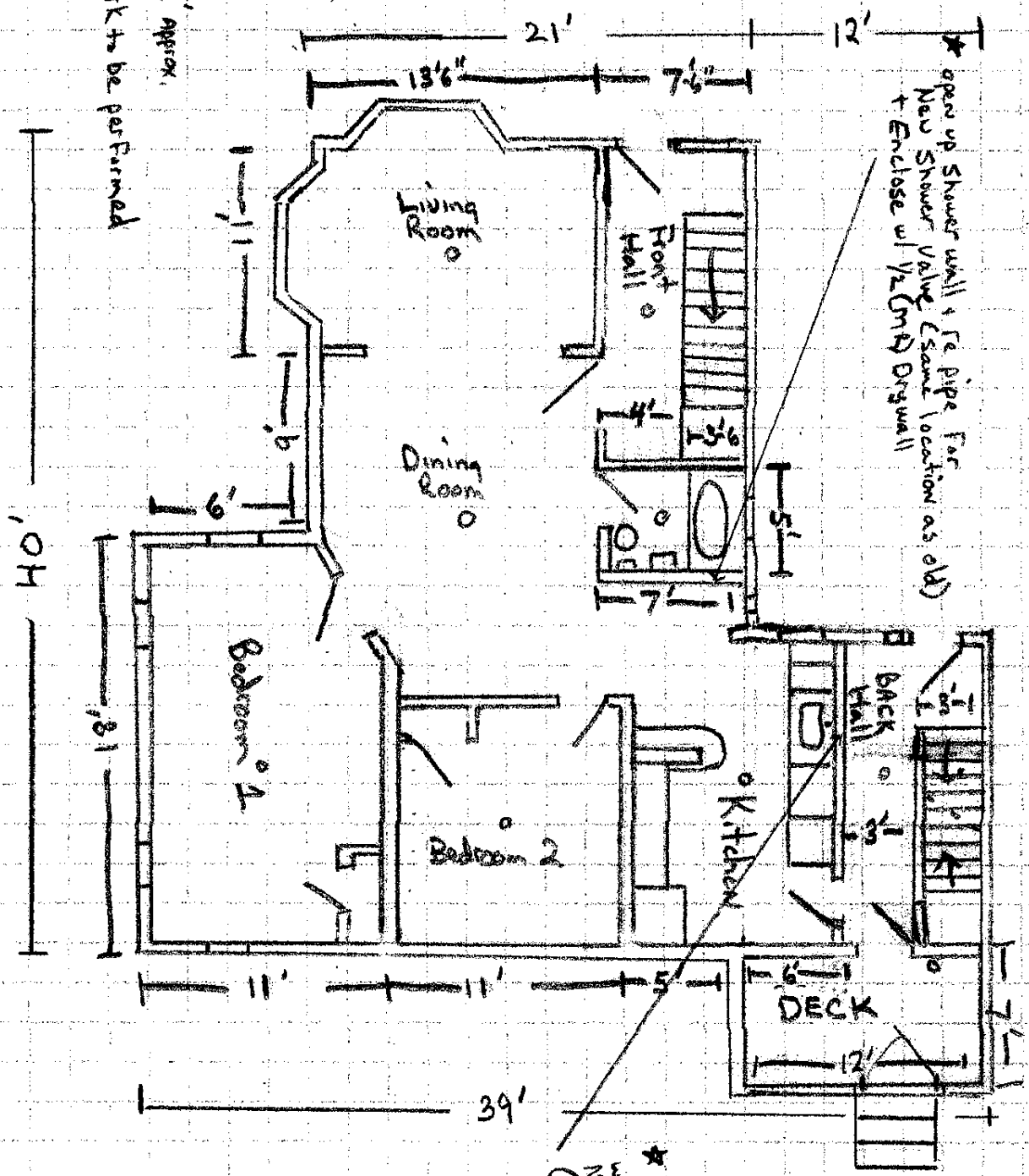


112 Summit St
 Portland, ME 04103



* open up Shower wall + Fe pipe for New Shower Valve (Same location as old) + Enclose w/ 1/2 CMU Drywall

* Open up Kitchen wall + Fe pipe for New Kitchen Sink (Same location as old one) + Enclose with 1/2 Drywall

Scale: 1 block = 2' approx.

* Indicates work to be performed