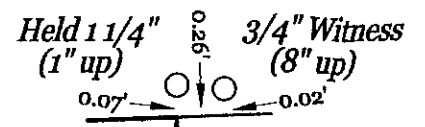
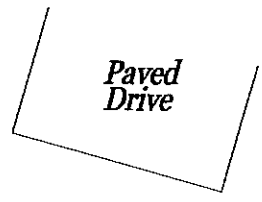


Held
Found 6"x6"
3' Offset Mon
(flush, ba
4th Angle From.

N/F
Fortin
Book 28042, Page 118
See Plan Ref.'s 10 & 11



Detail
(N.T.S)

Held
in

S 49°18'52" W 333.34'
134.18'

N/F
Winds And Sails, LLC
Book 32639, Page 271

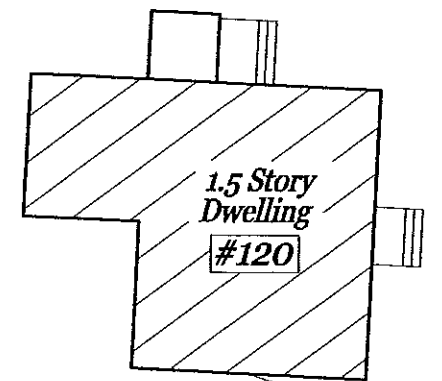
Approximate Location Of
Abutter's Property Line
(typical)

Proposed Conveyance
26,249 Sq. Ft.
(0.60 Acre)

129.04'
N 37°57'55" W



N/F
Johnson
Book 11467, Page 315



S 49°18'52" W 199.56'

Held 3/4" (1" up) Found Iron Pipe (typical)

N 49°18'52" E 294.20'

N 87°50'44" 42.90'

19.2'

Stockade Fence (typical)

Held 3/4" (3" up)

S 37°54'41" E 261.84'
154.08'

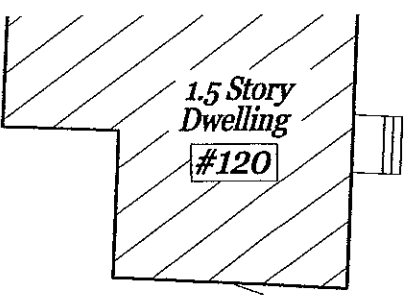
(see Note 18)

#5 Steel Rebar w/Survey Cap #2124 To Be Set

S 37°54'41" E
154

(see Note 18)

N/F
Johnson
Book 11467, Page 315



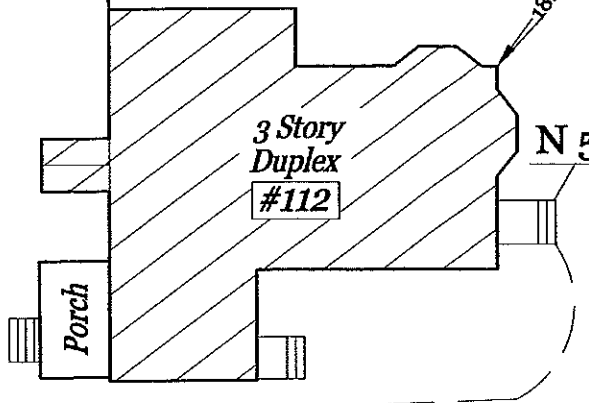
S 49°18'52" W
199.56'

Held 3/4" (1" up)
Found Iron Pipe (typical)

N 49°18'52" E
294.20'

#5 Steel Rebar w/Survey Cap #2124 To Be Set (typical)

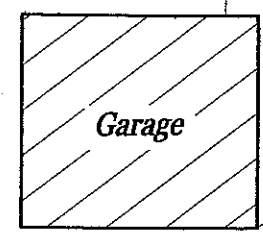
N 87°50'48" E
42.90'



N 51°51'3" E
5.00'

Remaining Land Of Dambrie
35,673 Sq. Ft.
(0.82 Acre)

107.76'



Gravel Drive

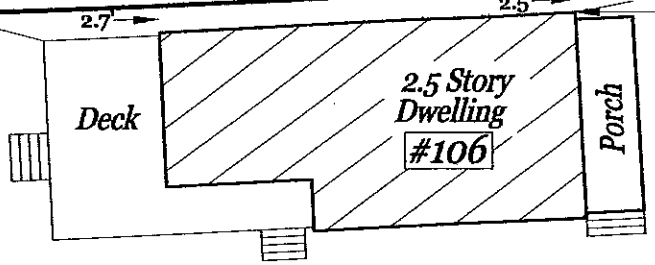
Wire Fence (see Note 17)

(20 Rods - 330' per Book 590, Page 346 5-9-1892)
334.31'

Held for 1 (7" do) (see Note 19)

N 49°37'29" E
(Book 771, Page 21 6-9-1905 = 335')

65.39' Meas. (65.33' City)



N/F
Mirarchi
Book 6988, Page 279

10.01'

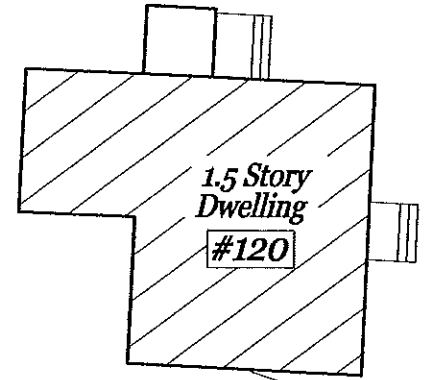
R
8. T
L
9. L
L
10. A
11. T
P
a
12. T
F
d
13. A
n
14. C
e
15. P
N
16. T
a
P
17. A
e
18. A
r
19. A
N

Proposed Conveyance
26,249 Sq. Ft.
(0.60 Acre)

129.04' N 37°57'55" W
Approximate Location Of Abutter's Property Line (typical)
1" (bent)

N/F
Johnson
Book 11467, Page 315

Shed



S 49°18'52" W
199.56'

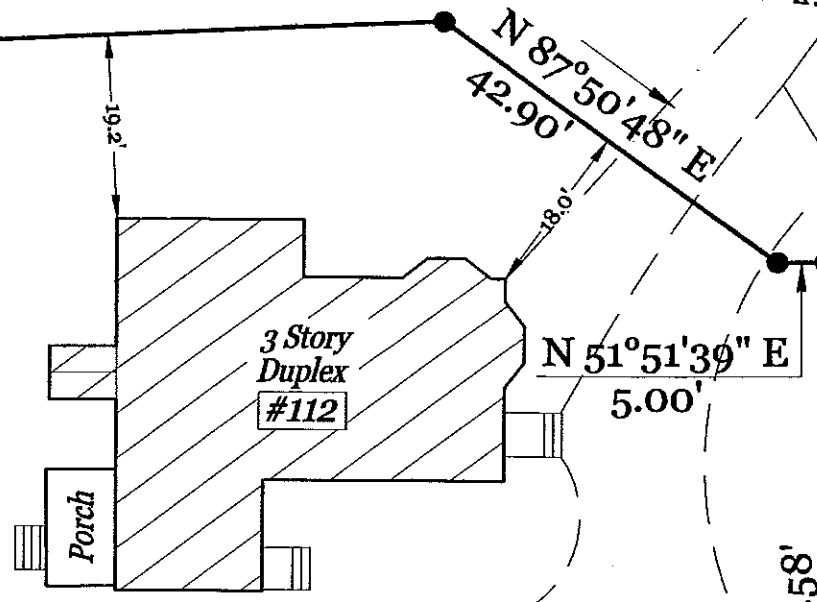
Held 3/4" (1" up)
Found Iron Pipe (typical)

16" Maple (see Note 19)

Overhead Utility Lines

CMP#12
Utility Pole (typical)

N 49°18'52" E
294.20'



Remaining Land Of Dambrie
35,673 Sq. Ft.
(0.82 Acre)

52.00'

134.58'

82.58'

N 38°08'21" W

Edge of Pavement

Summit Street
(See Notes 11 & 15)

Wire Fence (see Note 17)
(20 Rods - 330' per Book 590, Page 346 5-9-1892)
334.31'

N 49°37'29" E

Held for line 3/4" (7" down) (see Note 19)

65.39' Meas. (65.33' City)

CMP#11

24.75'

49.5'