

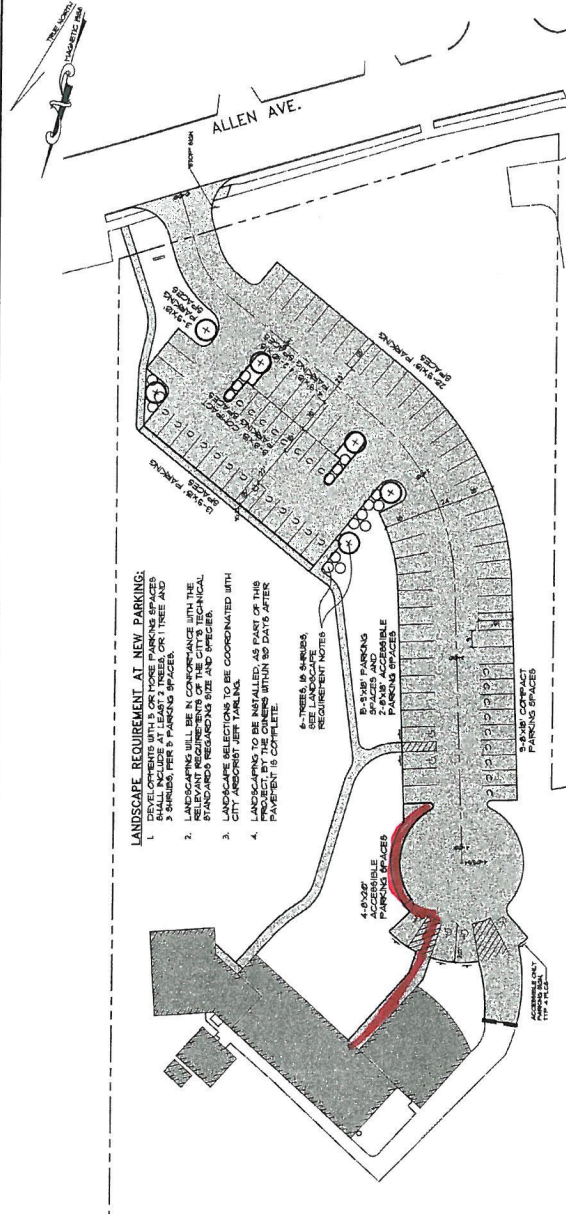


REV	DATE	DESCRIPTION
1	04/05/16	ISSUED FOR PERMITS AND MARK
2	04/05/16	ISSUED FOR PERMITS AND MARK
3	04/05/16	ISSUED FOR PERMITS AND MARK

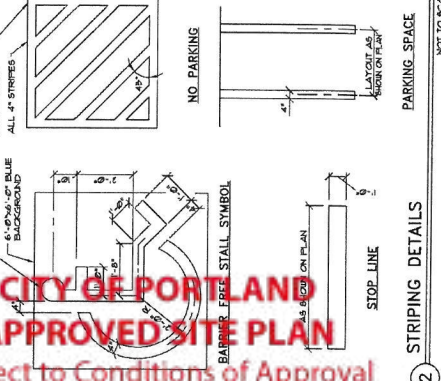
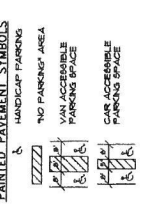
PROJECT:	14130
SCALE:	AS SHOWN
DATE:	APRIL 5, 2016
DESIGN BY:	TSG
CHECK BY:	TSG
DRAWN BY:	JAC
ALLEN AVENUE UNITARIAN UNIVERSALIST CHURCH 524 ALLEN AVE., PORTLAND MAINE	

PARKING LOT IMPROVEMENTS
524 ALLEN AVENUE, PORTLAND
PARKING LAYOUT & DETAILS

C2.1
PROJECT: 14130



- LANDSCAPE REQUIREMENT AT NEW PARKING:**
1. ONE (1) TREE PER 100 SQUARE FEET OF NEW PARKING SHALL INCLUDE AT LEAST 3 TREES, OR 1 TREE AND 2 SHRUBS PER 5 PARKING SPACES.
 2. TREES AND SHRUBS WILL BE IN CONFORMANCE WITH THE CITY OF PORTLAND LANDSCAPE DESIGN STANDARDS REGARDING SIZE AND SPECIES.
 3. LANDSCAPE SELECTIONS TO BE COORDINATED WITH CITY ARBORIST JEFF TARDINO.
 4. LANDSCAPING TO BE INSTALLED AS PART OF THIS PROJECT AND COMPLETED WITHIN 90 DAYS AFTER PAVEMENT IS COMPLETE.



CITY OF PORTLAND APPROVED SITE PLAN
Subject to Conditions of Approval and Standard Conditions

DATE of APPROVAL **6-3-2016**
PLANNER Jean Fraser
PROJECT NO. **#2016-077**