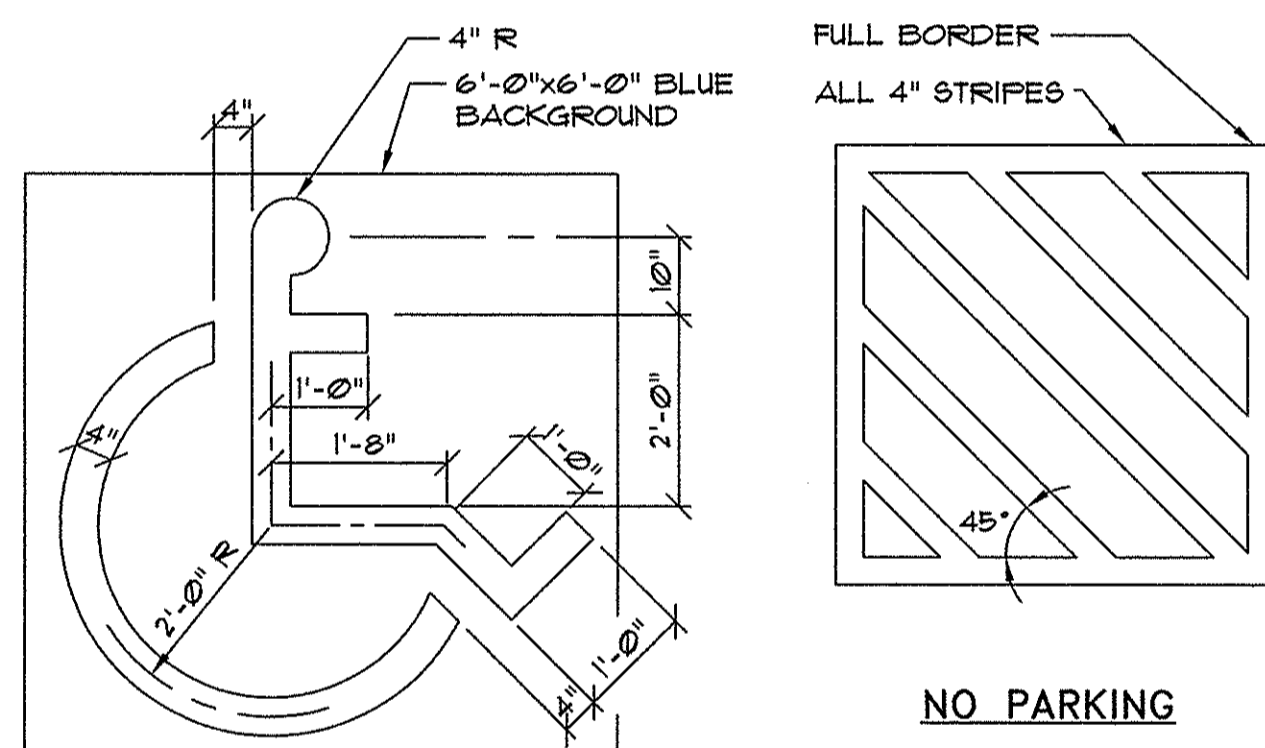


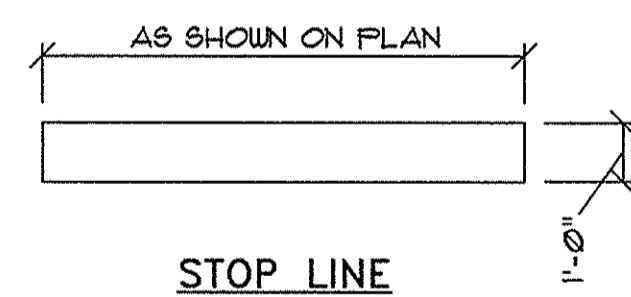
NOTES:

- SIGNS SHALL BE FABRICATED AND INSTALLED IN ACCORDANCE WITH MAINE DEPARTMENT OF TRANSPORTATION STANDARD SPECIFICATIONS, HIGHWAYS AND BRIDGES REVISION OF DECEMBER 2002, SECTION 6.45.
- ALL PERMANENT SIGNS ON THIS PROJECT ARE CLASSIFIED UNDER SECTION 6.45.03(2) TYPE 1 REGULATORY WARNING AND ROUTE MARKER ASSEMBLY SIGNS.
- SIGN MATERIAL SHALL BE AS SPECIFIED IN SECTION 119 OF THE MDOT STANDARD SPECIFICATIONS.
- POSTS SHALL BE METAL CHANNELS AS SPECIFIED IN SECTION 120.08. ALTERNATE POSTS MAY BE 4"x6" WOOD AS SPECIFIED IN SECTION 120.12, AS APPROVED BY ENGINEER.
- POSTS IN THE PUBLIC RIGHT-OF-WAY TO BE ON BREAKAWAY POSTS AS SPECIFIED IN SECTION 120 OF THE MDOT STANDARD SPECIFICATIONS.

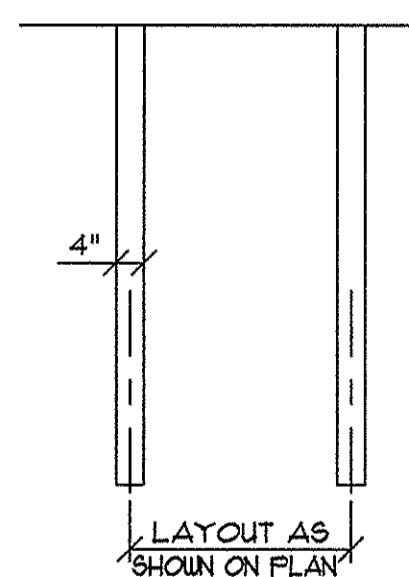
1 ROAD SIGN LEGEND NOT TO SCALE



BARRIER FREE STALL SYMBOL



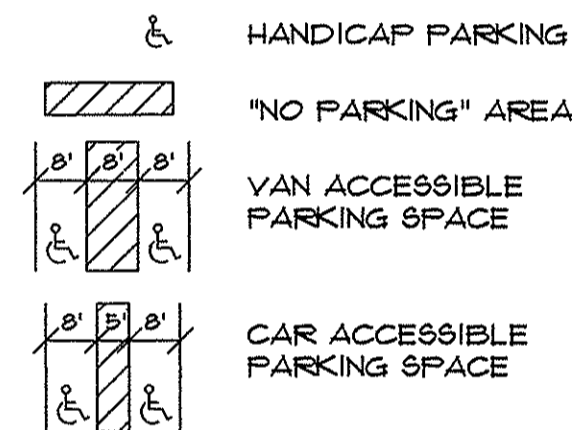
STOP LINE



PARKING SPACE

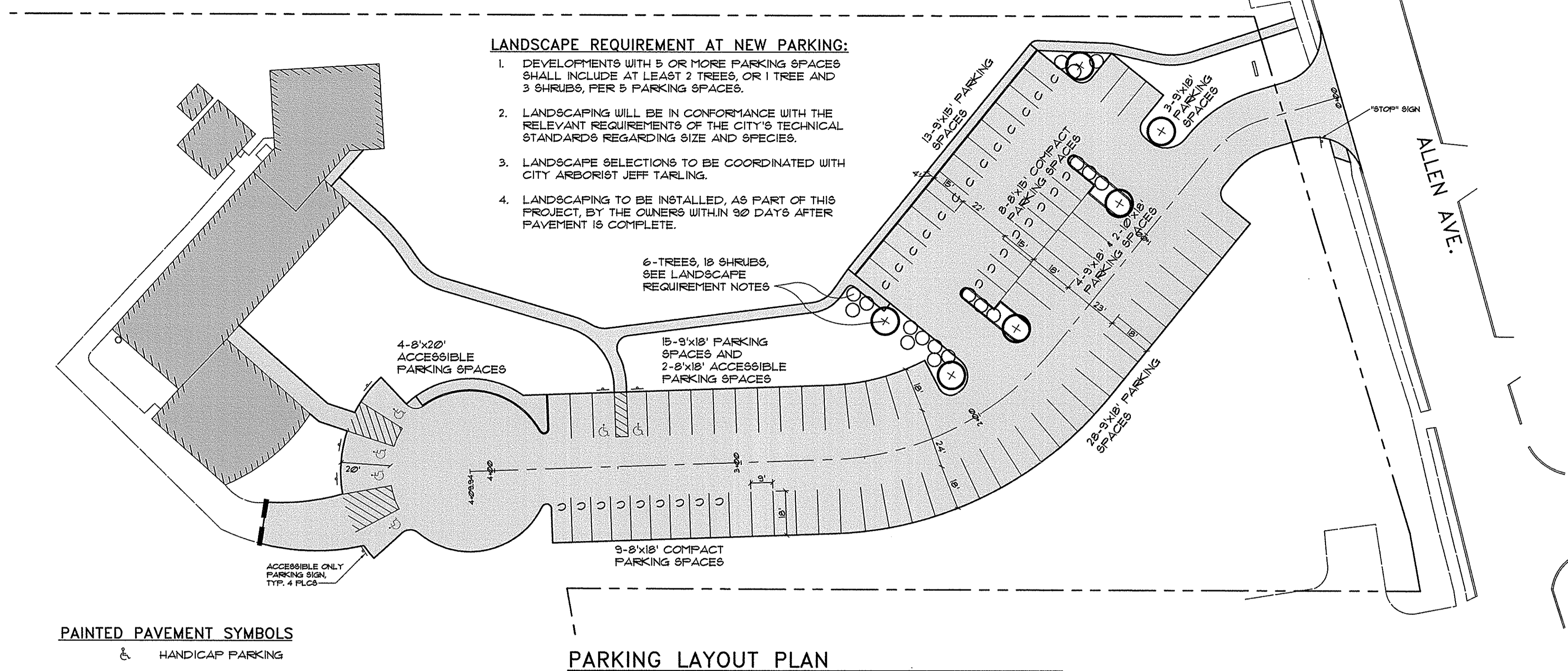
2 STRIPING DETAILS NOT TO SCALE

PAINTED PAVEMENT SYMBOLS



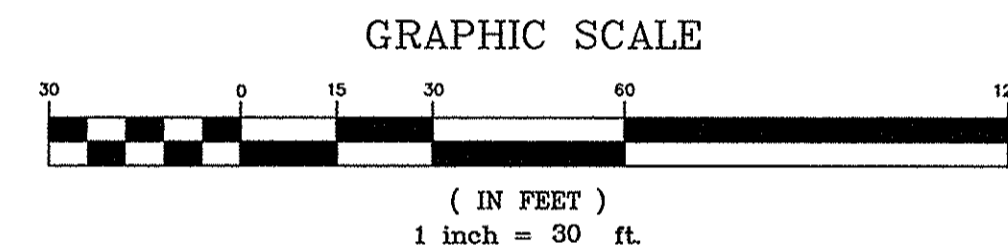
LANDSCAPE REQUIREMENT AT NEW PARKING:

- DEVELOPMENTS WITH 5 OR MORE PARKING SPACES SHALL INCLUDE AT LEAST 2 TREES, OR 1 TREE AND 3 SHRUBS, PER 5 PARKING SPACES.
- LANDSCAPING WILL BE IN CONFORMANCE WITH THE RELEVANT REQUIREMENTS OF THE CITY'S TECHNICAL STANDARDS REGARDING SIZE AND SPECIES.
- LANDSCAPE SELECTIONS TO BE COORDINATED WITH CITY ARBORIST JEFF TARLING.
- LANDSCAPING TO BE INSTALLED, AS PART OF THIS PROJECT, BY THE OWNERS WITHIN 90 DAYS AFTER PAVEMENT IS COMPLETE.

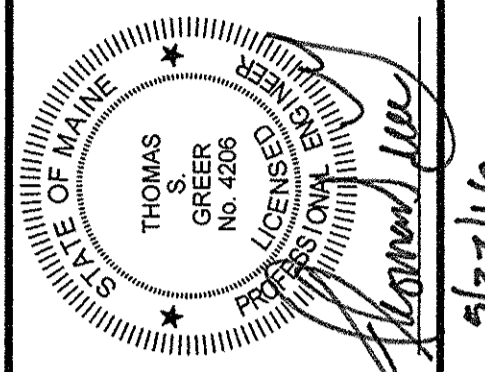


PARKING LAYOUT PLAN

SCALE: 1"=30'



PINKHAM & GREER CIVIL ENGINEERS
28 WINDY AVE. PORTLAND, ME 04103
TEL: 207.761.5482 FAX: 207.761.4495



REV.	DATE	DESCRIPTION
3	5/27/16	REV'D WALK & PARKING SPACES
2	5/12/16	REV'D PER STAFF REVIEW
1	5/6/16	REV'D PER STAFF COMMENTS

ALLEN AVENUE UNITARIAN UNIVERSALIST CHURCH
524 ALLEN AVE., PORTLAND MAINE

SCALE: AS SHOWN
DATE: APRIL 5, 2016
PROJECT: 14136

DRN BY: JDC
DESIGN BY: TSG
CHK. BY: TSG

PARKING LOT IMPROVEMENTS
524 ALLEN AVENUE, PORTLAND

FUTURE LANDSCAPING AND PARKING LAYOUT & DETAILS

C2.1