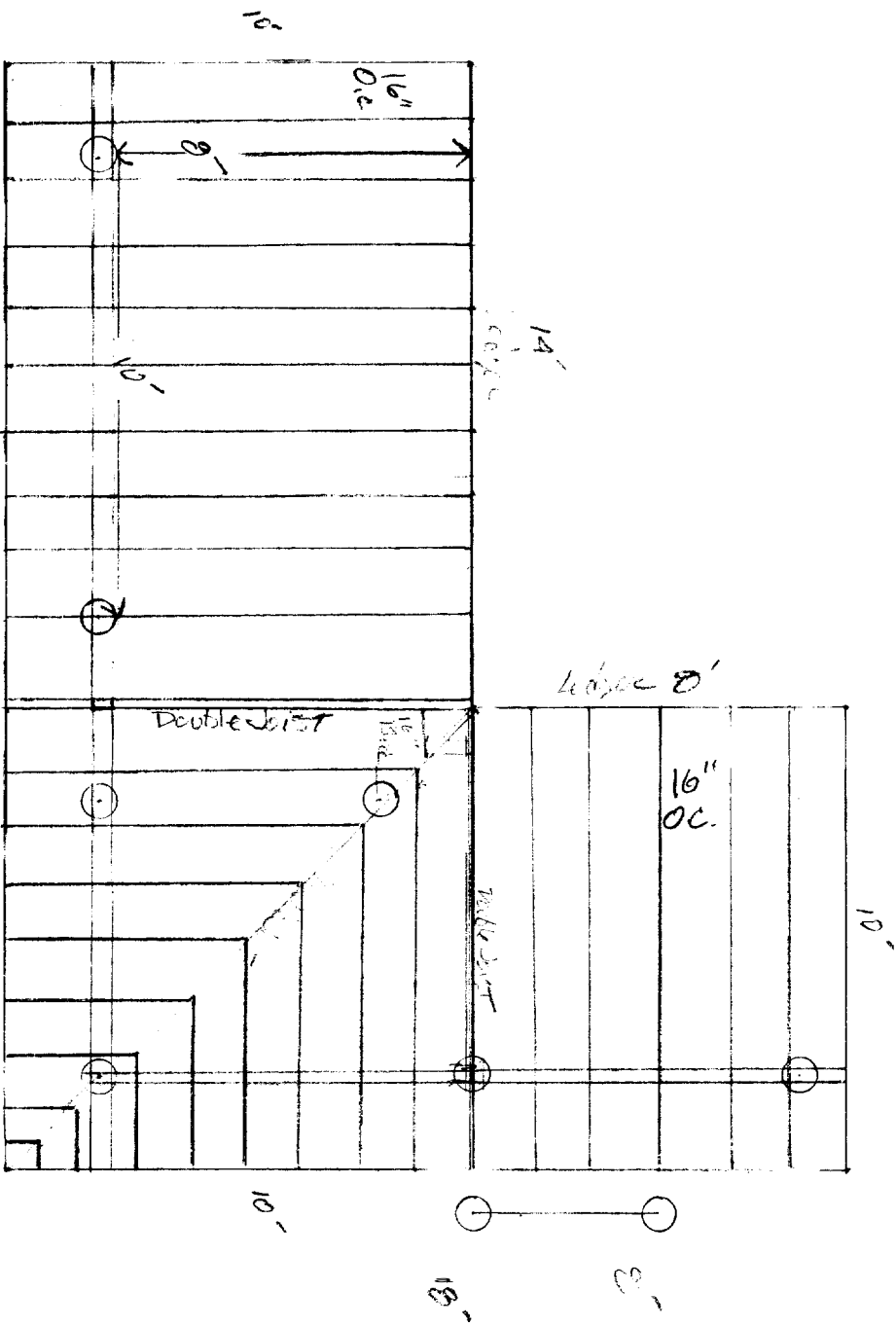


FRONT



$2 \times 4 \times 10 = 6$   
 $2 \times 6 \times 10 = 12$   
 $2 \times 8 \times 10 = 16$   
 $2 \times 10 \times 10 = 20$   
 $2 \times 12 \times 10 = 24$   
 $4 \times 4 \times 8 = 8$

320 SQ. FT.  
 9 PICES 4" DEEP  
 GIRDES 8" X 12"  
 JOISTS 2 X 8 16" OC.