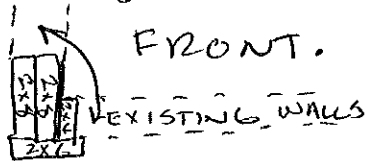


# D2 - NOTES

\* - STEEL DIMENSIONS =  $7\frac{1}{2}$ " TALL,  $6\frac{1}{2}$ " WIDE, AND 15' LONG. DOUBLE 2x8'S BOLTED TO BOTH SIDES WITH JOIST HANGERS TO CARRY EXISTING FLOOR JOISTS.

- LEFT SIDE STEEL IS SUPPORTED BY  $3\frac{1}{2}$ " x  $7\frac{1}{4}$ " ENGINEERED POST (TO FIT IN EXISTING 2x4 WALL) LANDS DIRECTLY ONTO BASEMENT CARRYING BEAM WHICH SITS ON FOUNDATION.

- RIGHT SIDE STEEL IS SUPPORTED BY 2 ~~2~~ 2x8'S + 2x4 +  $\frac{1}{2}$ " PLY POST WITH 2x6 LAB TO FRONT. LANDS DIRECTLY ONTO BASEMENT



CARRYING BEAM DIRECTLY ABOVE EXISTING STEEL COLUMN ON TOP OF FOOTING