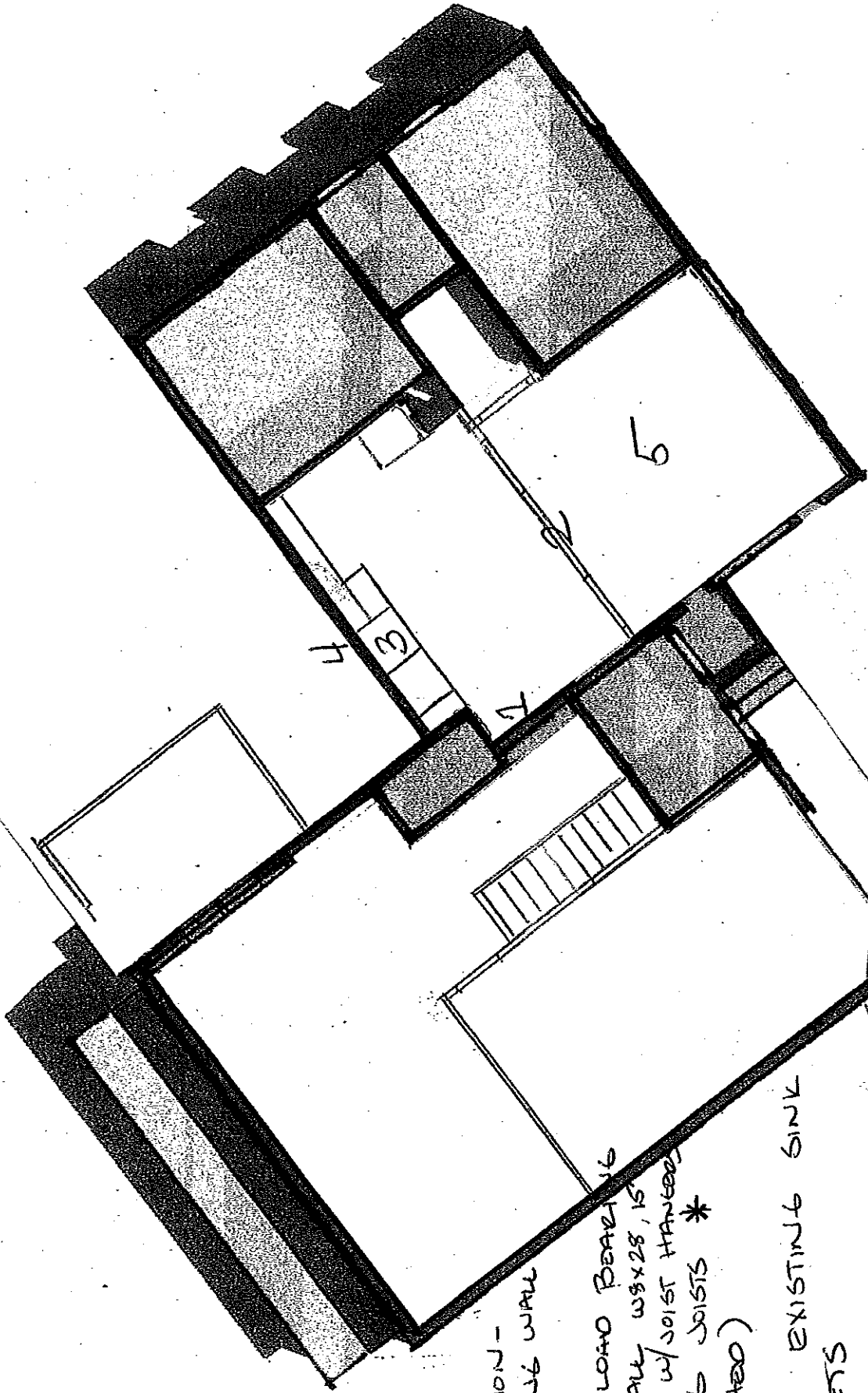


DA DEMOLITION
 PLAN
 1ST FLOOR



PLAN 8' 24'

1- REMOVE INTERIOR, NON-LOAD BEARING WALL

2- REMOVE LOAD BEARING WALL, INSTALL W8X28, 15' STEEL BEAM W/ JOIST HANGERS FOR EXISTING JOISTS * (SEE ATTACHED)

3- REMOVE EXISTING SINK + CABINETS

4- REMOVE EXISTING WINDOW AND STUDS TO RECEIVE NEW DOUBLE DOOR

5- REMOVE PLASTER CEILING AND SHEETROCK FLUSH TO VERTICAL CEILING