

SUBMITTAL DATA: SLZ-KA12NA & SUZ-KA12NA

12,000 BTU/H CEILING-CASSETTE HEAT-PUMP SYSTEMS

Job Name:	Location:	Date:
Purchaser:	Engineer:	
Submitted to:	For <input type="checkbox"/> Reference <input type="checkbox"/> Approval <input type="checkbox"/> Construction	
System Designation:	Schedule No.:	

GENERAL FEATURES

- Four-way 2'x2' ceiling-cassette indoor unit for ceiling recessed applications
- Built-in drain mechanism for condensate removal; lifts to 19-11/16"
- Wide air-flow pattern for better air distribution
- Design features ventilation air intake knockout
- Long-life air filter included with indoor unit
- Indoor unit powered from outdoor unit using A-Control
- Automatic fan speed control; auto restart following a power outage
- Limited warranty: five years on parts/defects, seven years on compressors

OPTIONAL ACCESSORIES
Indoor Unit

- Grille (SLP-15AAUW; required - shipped with unit)

Controller Options

- Wireless Remote Controller Kit (MHK1) with Remote Controller (MRCH1), Wireless Receiver (MIFH1), and cable (MRC1)*
 - Setback down to 50°F when used with MRCH1 Remote Controller
 - Portable Central Controller (MCCH1; for use with Wireless Remote Controller Kit MHK1)*
 - Outdoor Air Sensor (MOS1; for use with Central Controller (MRCH1), Wireless Remote Controller Kit (MHK1) and Portable Central Controller (MCCH1)*
- *See Submittal for information on each option.
- Wall-mounted Wired Remote Controller (PAR-21MAA)
 - M-NET Control Adapter (MAC-399IF)
 - Remote Temperature Sensor (M21-JKO-307)
 - Hand-held Wireless Remote Controller (PAR-FL32MA; req. PAR-FA32MA-E)
 - Wireless Signal Receiver PAR-FA32MA (for PAR-FL32MA)
 - Lockdown Bracket for Hand-held Controller (RCMKP1CB)

Cooling*

Rated Capacity	11,100 Btu/h
Minimum to Maximum Capacity Range	3,400 - 13,300 Btu/h
SEER	15.4 Btu/h/W
EER	12.0 Btu/h/W
Total Input	920 W

Heating at 47°F*

Rated Capacity	13,600 Btu/h
Minimum to Maximum Capacity Range	3,100 - 17,100 Btu/h
HSPF	9.6 Btu/h/W
COP	3.38
Total Input	1,180 W

Heating at 17°F*

Rated Capacity	8,300 Btu/h
Rated Total Input	930 W
COP	2.62
Maximum Capacity	8,300 Btu/h
Maximum Total Input	1,310 W

* Rating Conditions (Cooling) - Indoor: 80°F (27°C) DB, 67°F (19°C) WB; Outdoor: 95°F (35°C) DB, 75°F (24°C) WB.
 (Heating at 47°F) - Indoor: 70°F (21°C) DB, 60°F (16°C) WB; Outdoor: 47°F (8°C) DB, 43°F (6°C) WB.
 (Heating at 17°F) - Indoor: 70°F (21°C) DB, 60°F (16°C) WB; Outdoor: 17°F (-8°C) DB, 15°F (-9°C) WB.

Electrical Requirements

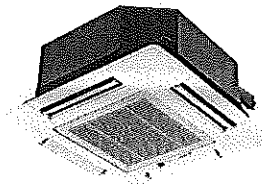
Power Supply 208 / 230V, 1-Phase, 60 Hz
 Recommended Fuse/Breaker Size 15 A

Voltage

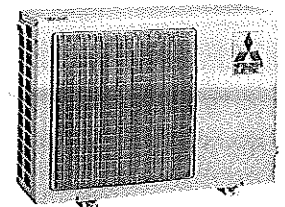
Indoor - Outdoor S1-S2 AC 208 / 230V
 Indoor - Outdoor S2-S3 DC 12-24V

OPERATING CONDITIONS

		Indoor Intake Air Temp.	Outdoor Intake Air Temp.
Cooling	Maximum	95°F (35°C) DB, 71°F (22°C) WB	115°F (46°C) DB
	Minimum	67°F (19°C) DB, 57°F (14°C) WB	14°F (-10°C) DB
Heating	Maximum	80°F (27°C) DB, 67°F (19°C) WB	75°F (24°C) DB, 65°F (18°C) WB
	Minimum	70°F (21°C) DB, 60°F (16°C) WB	-4°F (-20°C) DB, -5°F (-21°C) WB



Indoor Unit: SLZ-KA12NA



Outdoor Unit: SUZ-KA12NA


Indoor Unit

MCA	1 A
Fan Motor Output	20 W
Fan Motor	0.28 F.L.A.
Airflow (Lo - Med - Hi)	280 - 320 - 390 Dry CFM 250 - 290 - 350 Wet CFM
Air Filter	Polypropylene Honeycomb
Sound Pressure Level (Lo - Med - Hi)	30 - 34 - 39 dB(A)

DIMENSIONS	UNIT INCHES / MM	GRILLE INCHES / MM
W	22-7/16 / 570	25-5/8 / 650
D	22-7/16 / 570	25-5/8 / 650
H	9-1/4 / 235	13/16 / 20

Weight (Unit/Grille)

Lbs.	36 / 7
kg.	16.5 / 3
External Finish (Unit/Grille)	Galvanized-steel Sheets / Munsell 6.4Y 8.9 / 0.4
Field Drainpipe Size O.D.	1-1/4" / 32 mm

Outdoor Unit

Compressor	DC Inverter-driven
MCA	12 A
MOCPC	15 A
Fan Motor	0.50 F.L.A.
Sound Pressure Level	
Cooling	49 dB(A)
Heating	51 dB(A)

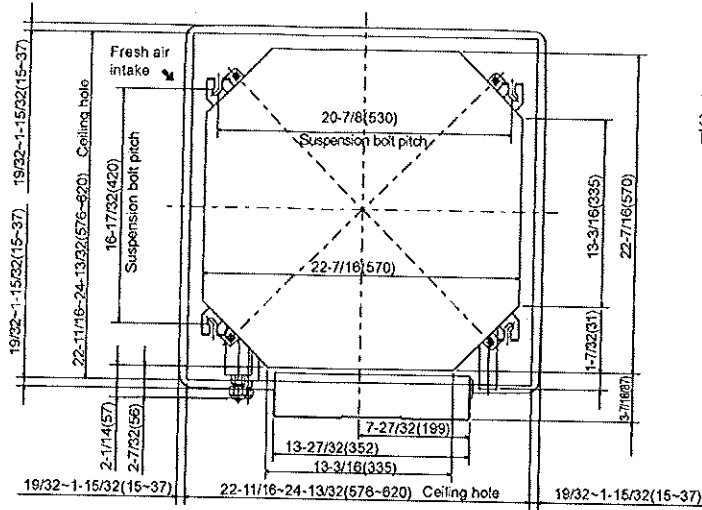
DIMENSIONS	INCHES / MM
W	31-1/2 / 800
D	11-1/4 / 285
H	21-5/8 / 550

Weight	77 lbs. / 35 kg
External Finish	Munsell No. 3Y 7.8 / 1.1
Refrigerant Type	R410A
Refrigerant Pipe Size O.D.	
Gas Side	3/8" / 9.52 mm
Liquid Side	1/4" / 6.35 mm
Max. Refrigerant Pipe Length	65' / 19 m
Max. Refrigerant Pipe Height Difference	40' / 12 m
Connection Method	Flared

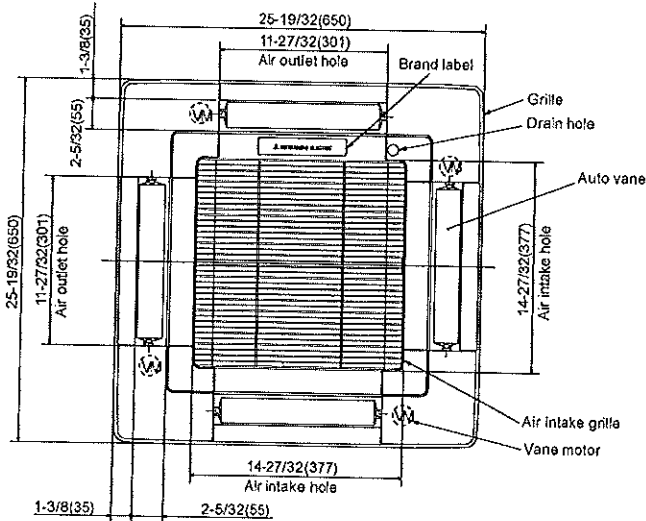
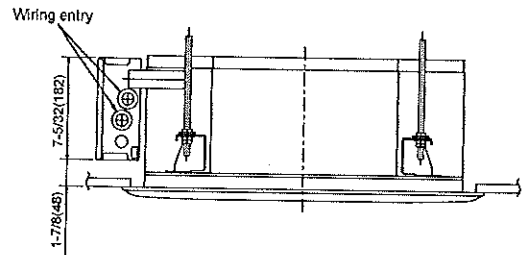
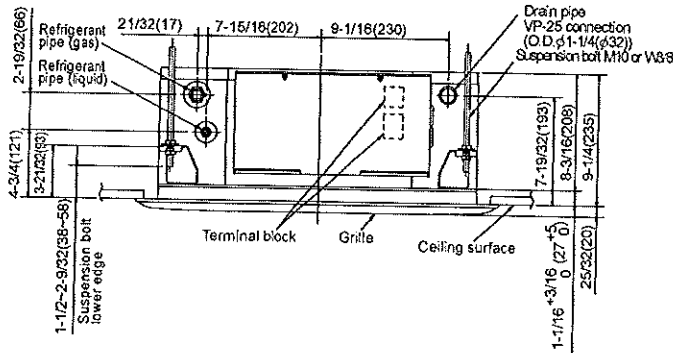
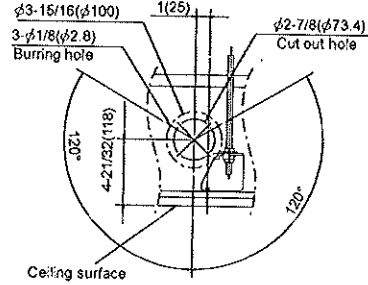


DIMENSIONS: SLZ-KA12NA

Unit : inch (mm)



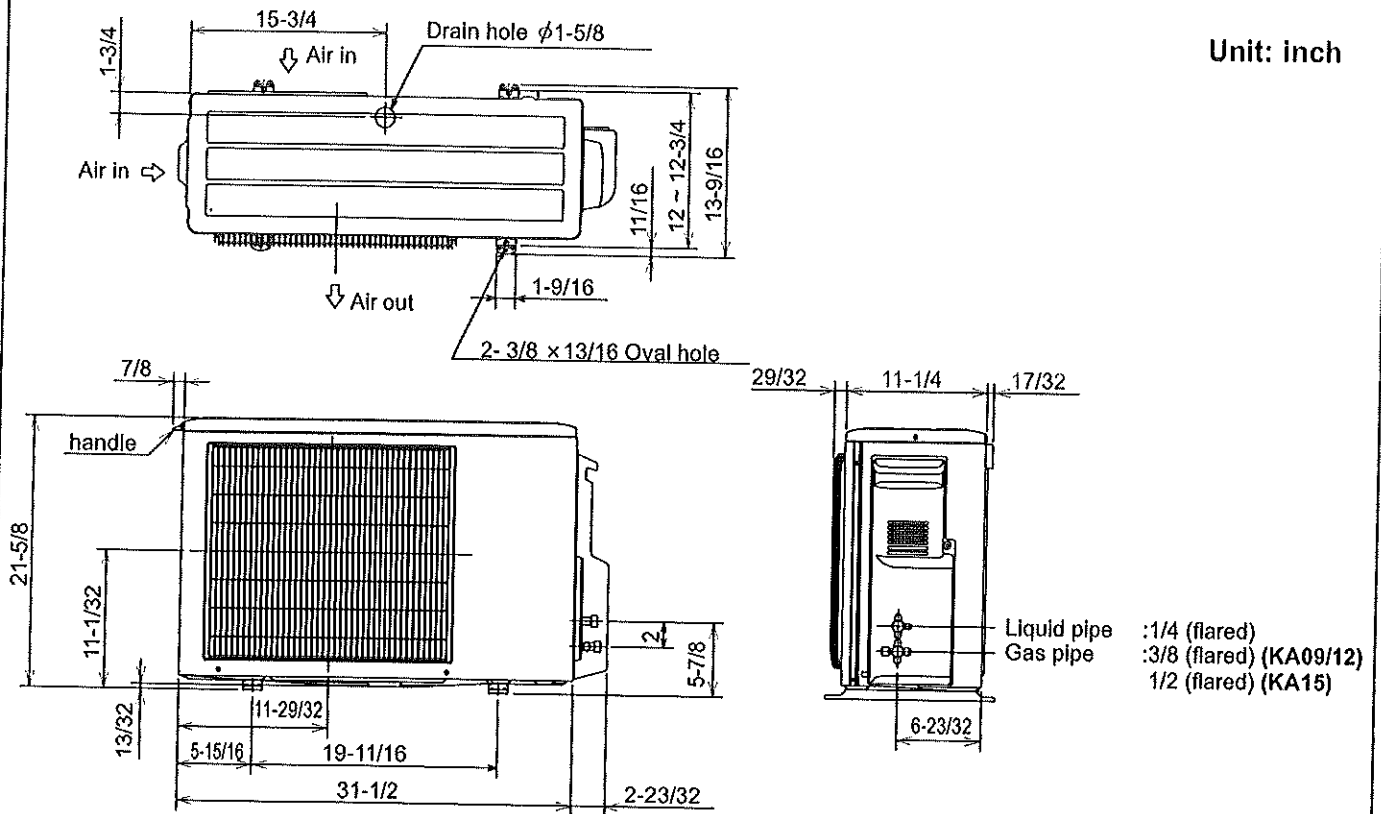
Detail drawing of fresh air intake



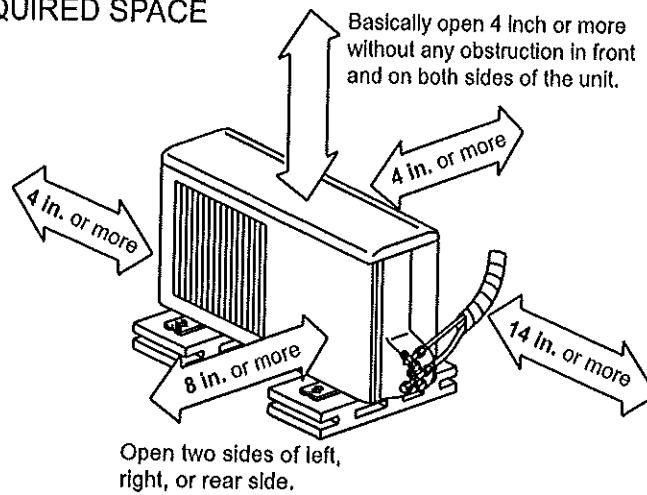
Models	Refrigerant pipe (liquid)	Refrigerant pipe (gas)
SLZ-KA09NA	1/4 inch (φ 6.35mm) flared connection	3/8 inch (φ 9.52mm) flared connection
SLZ-KA12NA	1/4 inch (φ 6.35mm) flared connection	3/8 inch (φ 9.52mm) flared connection
SLZ-KA15NA	1/4 inch (φ 6.35mm) flared connection	1/2 inch (φ 12.7mm) flared connection

DIMENSIONS: SUZ-KA12NA

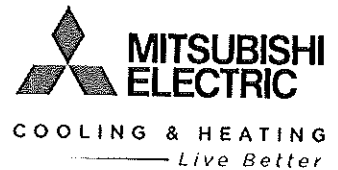
Unit: inch



REQUIRED SPACE



Intertek



3400 Lawrenceville Suwanee Rd
 Suwanee, GA 30024
 Tele: 678-376-2900 • Fax: 800-889-9904
 Toll Free: 800-433-4822 (#3)
 www.mehvac.com
 Specifications are subject to change without notice.