

ARCHITECT:  
**bka**  
 BKA Architects, Inc.  
 Architecture + Interiors

CONSULTING ENGINEER:  
  
 R. W. Sullivan Engineering  
 HVAC, Electrical, Plumbing, Fire Protection, Code  
 100 South Main Street, Suite 201  
 Boston, Massachusetts 02109-1107  
 Phone: (617) 552-8877 Fax: (617) 552-0816  
 www.rws-engineering.com  
 REG. NO. 001000

SPECIAL APPLICATIONS:  
 NO. DESCRIPTION:  
 01 CENTER OF TILE HEAD PLACEMENT

LEGEND:  
 ○ RN PIPE RISER UP  
 ○ DN PIPE RISER DOWN  
 — STEEL PIPE (WET)  
 - - - STEEL PIPE (DRY)  
 ● SYSTEM UNDERGROUND  
 ⊙ HYDRAULIC CALC. POINT

DESIGN NOTES:  
 \*ALL PIPING 2" AND LARGER TO BE SCHEDULE 10 STEEL WITH GROOVED FITTING. ALL PIPING 2" AND SMALLER TO BE SCHEDULE 40 STEEL WITH APPROPRIATE FITTING.  
 \*POSITION, LOCATION, SPACING, AND USE OF SPRINKLERS SHALL BE IN ACCORDANCE WITH NFPA 13 2007 ed.  
 \*POSITION, LOCATION, SPACING, AND USE OF HANGERS SHALL BE IN ACCORDANCE WITH NFPA 13 2007 ed.  
 \*HYDRAULIC CALCULATION PROCEDURES HAVE BEEN DONE IN ACCORDANCE WITH NFPA 13 2007 ed. (SEE PLANS FOR LOCATION OF REMOTE AREAS, HYDRAULIC REFERENCE POINTS, AND SYSTEM DEMANDS)  
 \*ALL ELECTRICAL WORK TO BE DONE BY OTHERS.  
 \*DIMENSIONS AND LOCATIONS GIVEN FOR SPRINKLER HEADS AND PIPE MAY VARY TO ACCOMMODATE ACTUAL FIELD CONDITIONS.  
 \*OWNER TO PROVIDE SUFFICIENT HEAT TO PREVENT FREEZING IN WATER FILLED SPRINKLER PIPE AND EQUIPMENT.  
 \*OTHER TRADES TO COORDINATE THEIR WORK WITH SPRINKLER CONTRACTOR.

VIKING MODEL VK572  
 (57 / 155")  
 K=14.0  
 3/4" EXTENDED COVERAGE SEMI RECESSED PENDENT (WHITE)  
 "14" x "14" SPACING"

VICTAULIC MODEL V2708  
 (28 / 155")  
 K=5.6  
 1/2" SEMI RECESSED PENDENT (WHITE)  
 "130 SQ. FT. SPACING"

VICTAULIC MODEL V2704  
 (34 / 155")  
 K=5.6  
 1/2" UPRIGHT (CHROME)  
 "130 SQ. FT. SPACING"  
 DEFLECTORS 1" TO 12" BELOW NON-COMBUSTIBLE CEILINGS

VICTAULIC MODEL V3606  
 (22 / 155")  
 K=5.6  
 1" SEMI RECESSED DRY PENDENT (WHITE)  
 "15" x "15" SPACING"

TYCO DS-1  
 (2 / 155")  
 K=5.6  
 1" EXTENDED COVERAGE DRY HORIZONTAL SIDEWALL (WHITE)  
 "18" x "20" SPACING"

TOTAL HEADS ON SHEET: 141

SCALE: 1/8" = 1'-0"

DATE: NOVEMBER 25, 2009

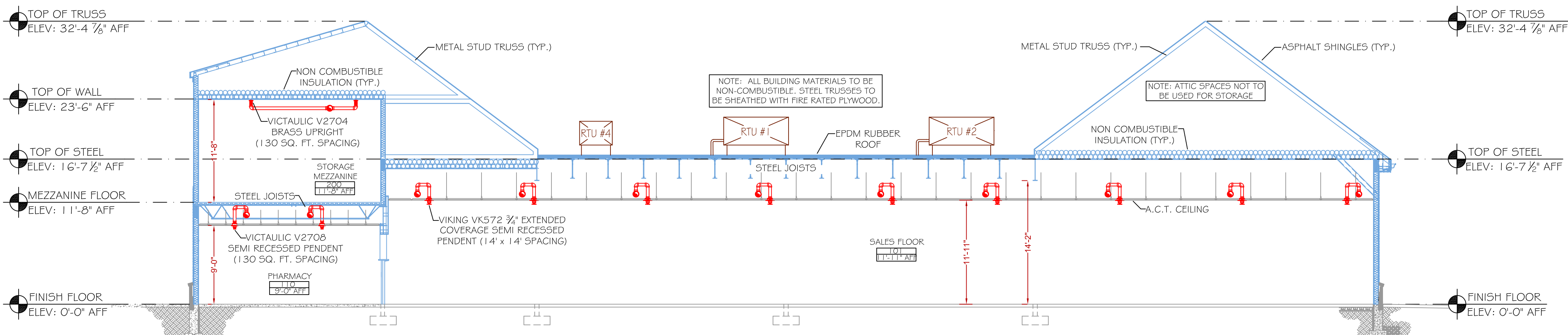
DESIGNER: JEREMY FOSS  
 NICET LEVEL I CERT. #126901

CHECKED BY: E. POULIN (RMS# 515)  
 NICET LEVEL III CERT. # 108534

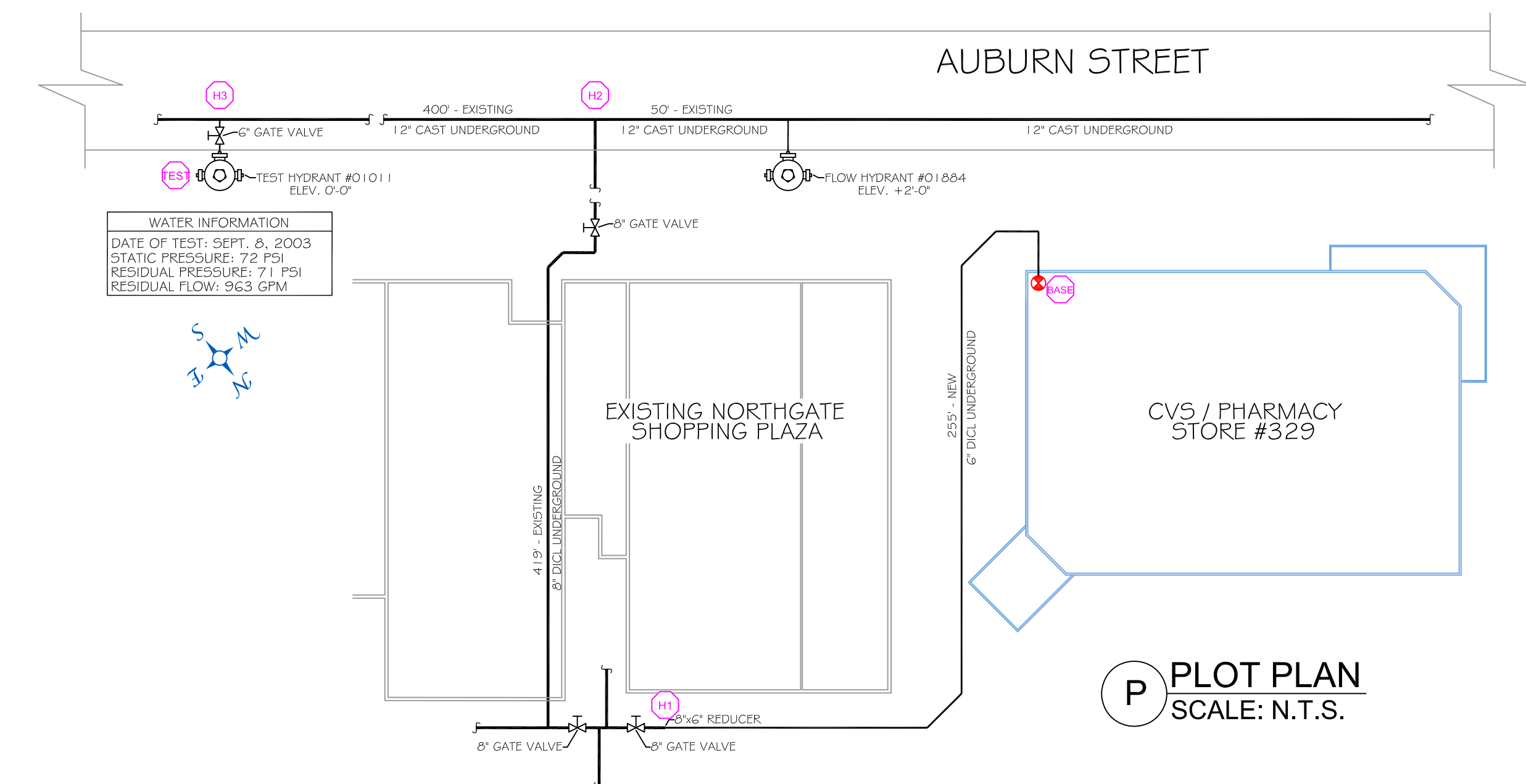
LOCATION:  
 NORTHGATE PLAZA  
 91 AUBURN STREET  
 PORTLAND, MAINE

DRAWING TITLE:  
**CVS STORE #329**  
 FIRE PROTECTION PLAN  
 (NFPA 13 2007 ed.)

DRAWING NO.:  
**FP-1.1**

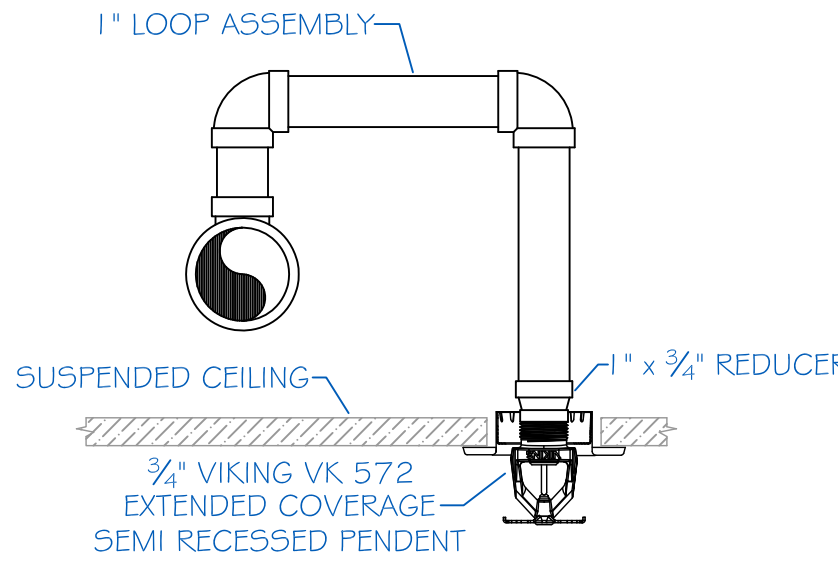


**A SECTION "A" DETAIL**  
 SCALE: N.T.S.

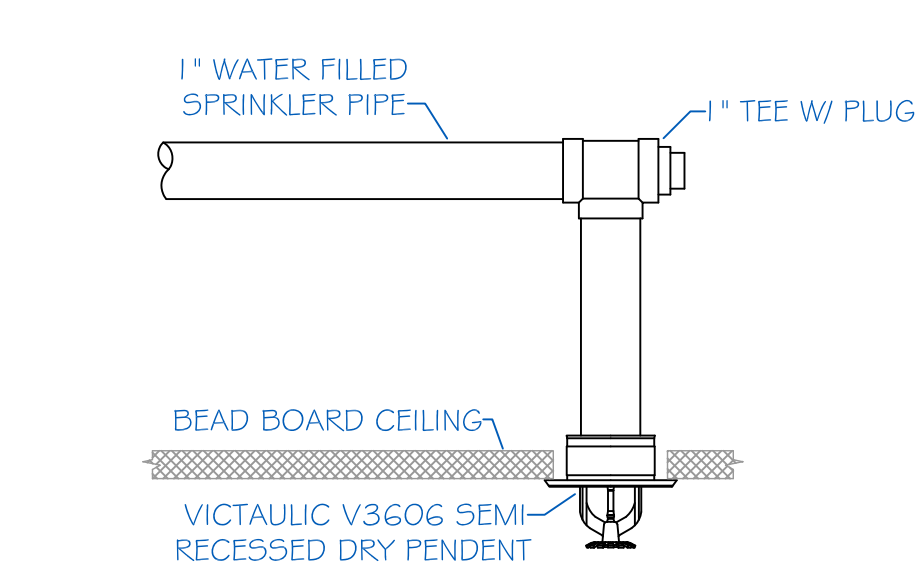


**P PLOT PLAN**  
 SCALE: N.T.S.

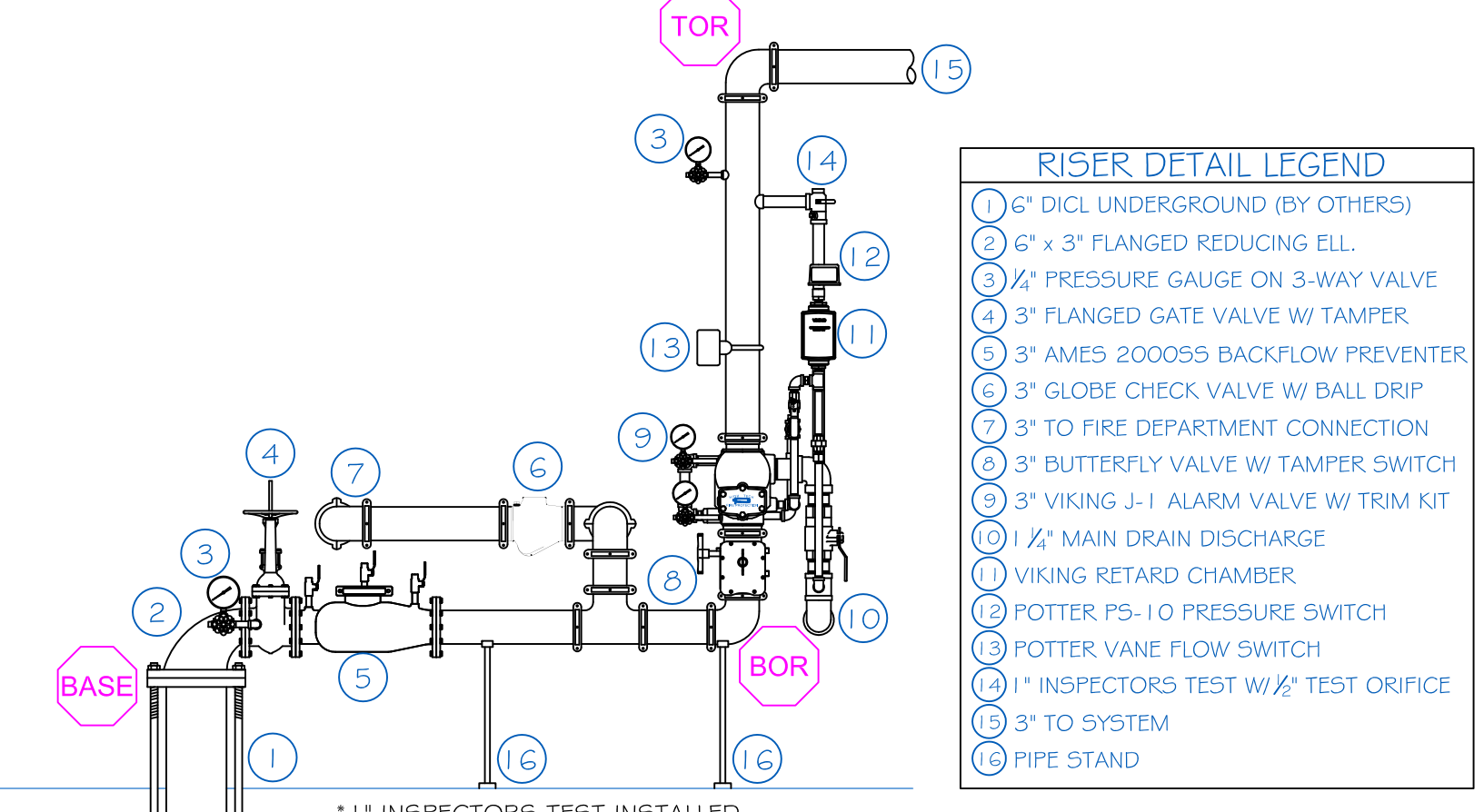
**PROJECT DESCRIPTION**  
**BUILDING CONST:** THE BUILDING IS BEING CONSTRUCTED OF ALL NON COMBUSTIBLE MATERIALS. THE ROOF STRUCTURE WILL BE MADE USING STEEL TRUSSES WITH FIRE RATED WOOD SHEATHING AND ASPHALT SHINGLES. THE INTERIOR WALLS WILL BE FRAMED WITH METAL STUDS AND COVERED IN SHEETROCK.  
**BUILDING OCCUP:** THE BUILDING IS DESIGNED AS A CVS RETAIL STORE WITH A PHARMACY LOCATED WITHIN.  
**SPRINKLER DESIGN:** THE SPRINKLER SYSTEM HAS BEEN DESIGNED USING AN ORDINARY HAZARD GROUP II CLASSIFICATION THROUGHOUT AS INDICATED IN THE PROJECT SPECIFICATIONS PROVIDED BY CVS. STANDARD COVERAGE HEADS HAVE BEEN UTILIZED IN ALL AREAS ASIDE FROM THE SALES FLOOR, WHILE THE SALES FLOOR IS BEING PROTECTED USING EXTENDED COVERAGE ORDINARY HAZARD TYPE HEADS. THE SPRINKLER SYSTEM HAS BEEN DESIGNED TO MEET ALL APPLICABLE CODES REGARDING AN NFPA 13 2007 ed. SYSTEM AND THE CONTRACT DRAWINGS PROVIDED BY R.W. SULLIVAN ENGINEERING.



**PH PENDENT HEAD DETAIL**  
 SCALE: N.T.S.



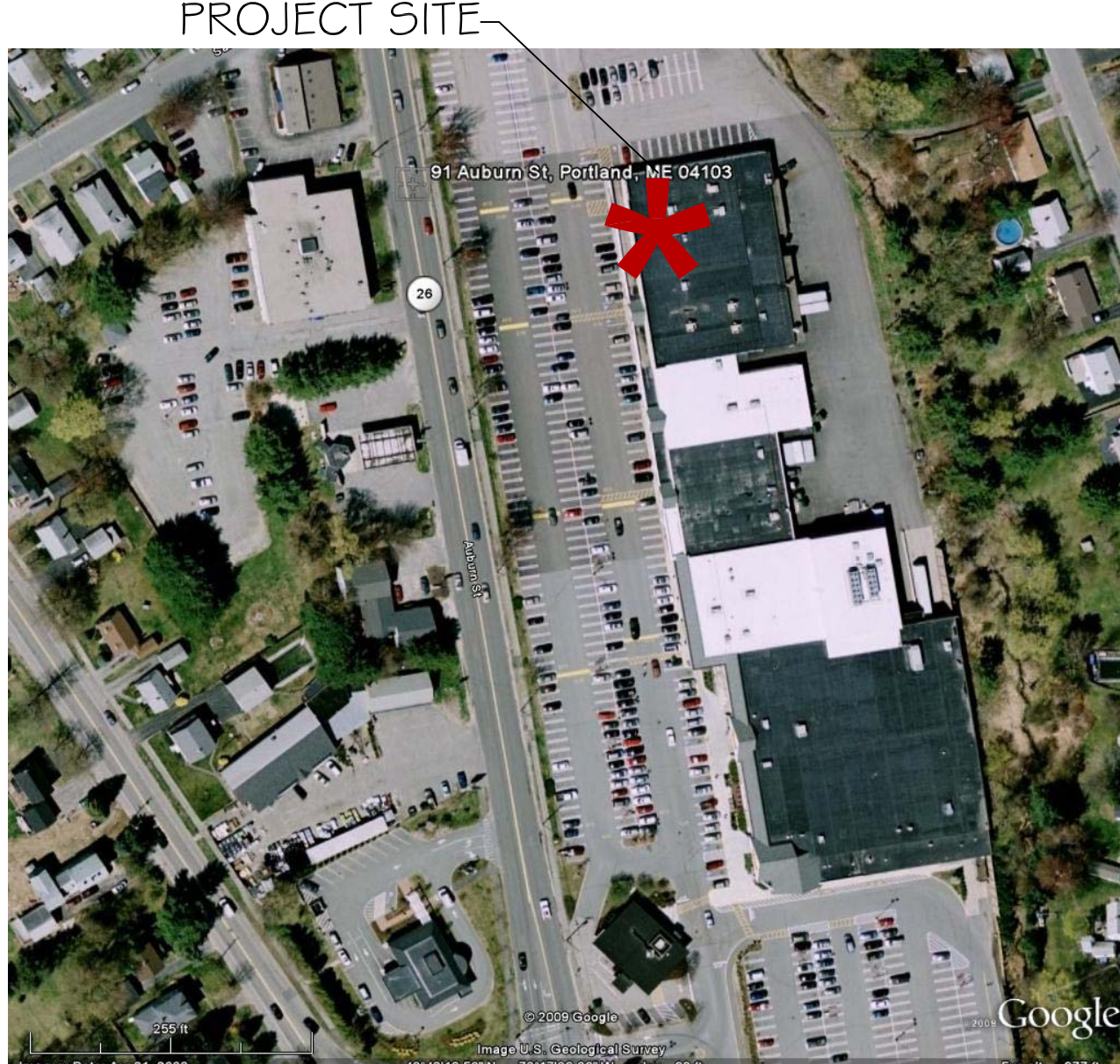
**DH DRY PENDENT HEAD DETAIL**  
 SCALE: N.T.S.



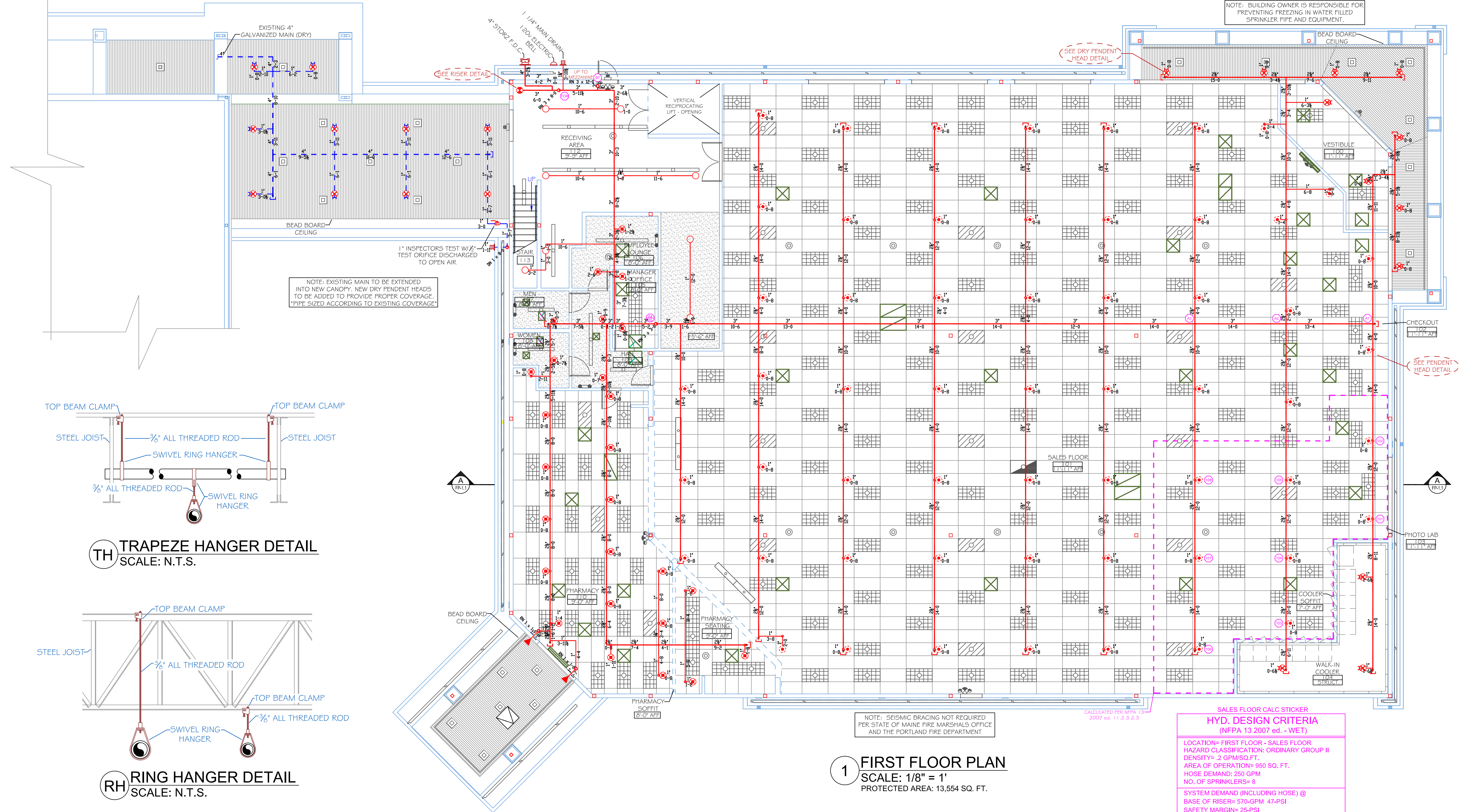
**R RISER DETAIL**  
 SCALE: N.T.S.

- RISER DETAIL LEGEND**
- ① 2" DI CL UNDERGROUND (BY OTHERS)
  - ② 2" x 3" FLANGED REDUCING ELL
  - ③ 3" FLANGED GATE VALVE W/ TAMPER
  - ④ 3" AMES 2000SS BACKFLOW PREVENTER
  - ⑤ 3" GLOBE CHECK VALVE W/ BALL DRIP
  - ⑥ 3" TO FIRE DEPARTMENT CONNECTION
  - ⑦ POTTER PSI-10 PRESSURE SWITCH
  - ⑧ POTTER VANE FLOW SWITCH
  - ⑨ 1" INSPECTORS TEST W/ 1/2" TEST ORIFICE
  - ⑩ 3" TO SYSTEM
  - ⑪ 1/2" MAIN DRAIN DISCHARGE
  - ⑫ VIKING RETARD CHAMBER
  - ⑬ POTTER PSI-10 PRESSURE SWITCH
  - ⑭ POTTER VANE FLOW SWITCH
  - ⑮ 1" INSPECTORS TEST W/ 1/2" TEST ORIFICE
  - ⑯ 3" TO SYSTEM
  - ⑰ PIPE STAND

NOTE: VANE FLOW SWITCH NOT REQUIRED PER NFPA 13 2007 ed. OR AFI BUT IS BEING INSTALLED PER R.W. SULLIVAN CONTRACT DRAWINGS



**S SITE PLAN**  
 SCALE: N.T.S.

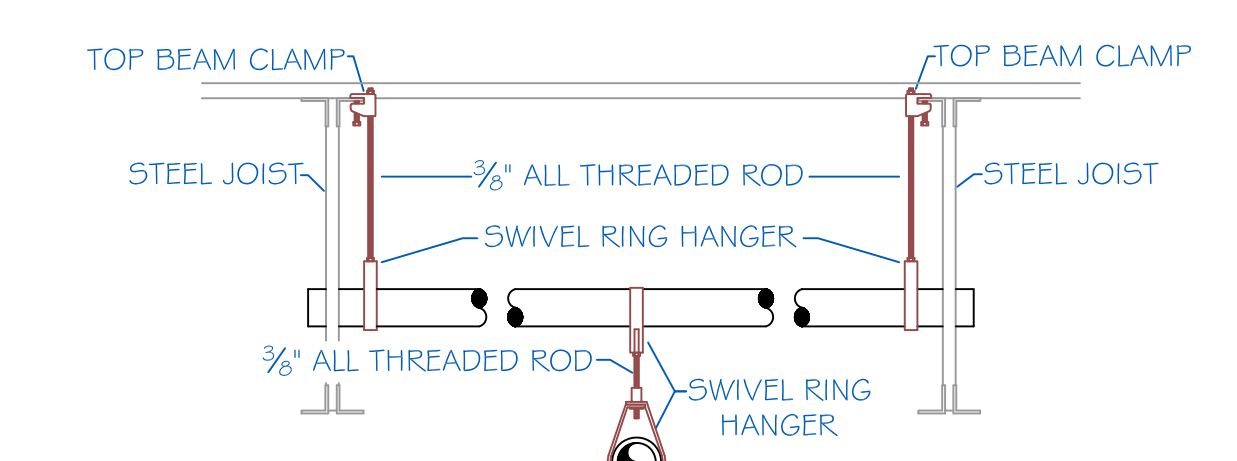


**1 FIRST FLOOR PLAN**  
 SCALE: 1/8" = 1'  
 PROTECTED AREA: 13,554 SQ. FT.

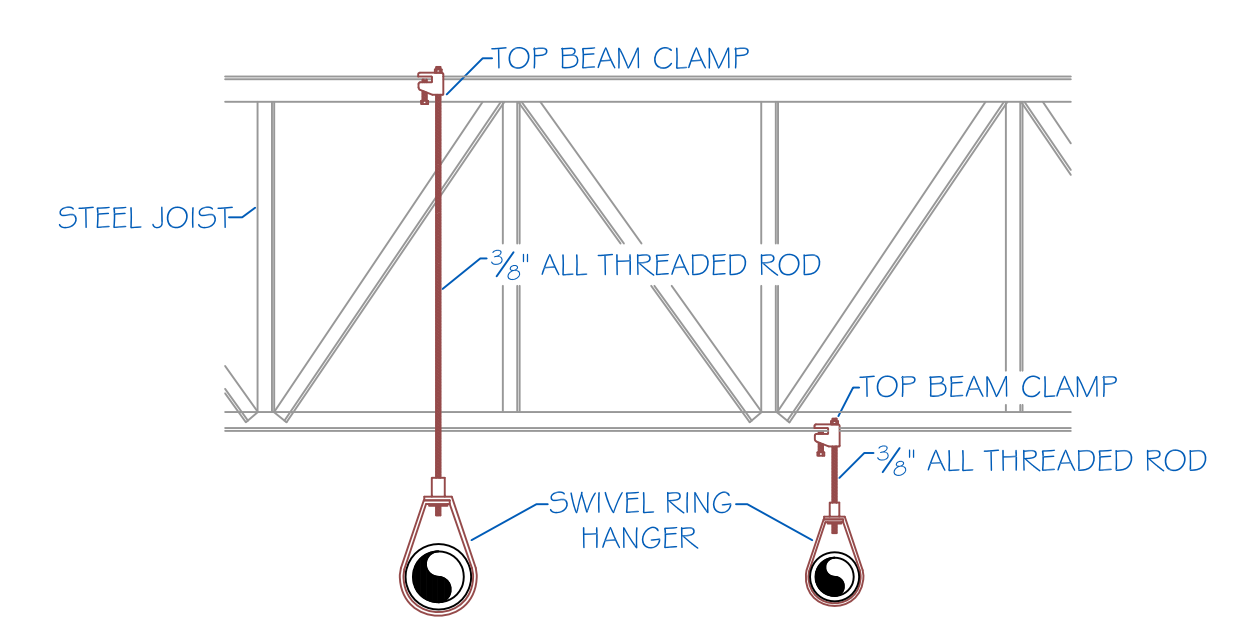
SALES FLOOR CALC STICKER  
**HYD. DESIGN CRITERIA**  
 (NFPA 13 2007 ed. - WET)  
 LOCATION: FIRST FLOOR - SALES FLOOR  
 HAZARD CLASSIFICATION: ORDINARY GROUP II  
 DENSITY: 2.0 GPM/SQ. FT.  
 AREA OF OPERATION: 950 SQ. FT.  
 HOSE DEMAND: 250 GPM  
 NO. OF SPRINKLERS: 9  
 SYSTEM DEMAND (INCLUDING HOSE) @ BASE OF RISER: 570-GPM 47-PSI  
 SAFETY MARGIN: 25-PSI

MEZZANINE CALC STICKER  
**HYD. DESIGN CRITERIA**  
 (NFPA 13 2007 ed. - WET)  
 LOCATION: MEZZANINE STORAGE  
 HAZARD CLASSIFICATION: ORDINARY GROUP II  
 DENSITY: 2.0 GPM/SQ. FT.  
 AREA OF OPERATION: 950 SQ. FT.  
 HOSE DEMAND: 250 GPM  
 NO. OF SPRINKLERS: 10  
 SYSTEM DEMAND (INCLUDING HOSE) @ BASE OF RISER: 518-GPM 58-PSI  
 SAFETY MARGIN: 13-PSI

**M MEZZANINE FLOOR PLAN**  
 SCALE: 1/8" = 1'  
 PROTECTED AREA: 2,117 SQ. FT.



**TH TRAPEZE HANGER DETAIL**  
 SCALE: N.T.S.



**RH RING HANGER DETAIL**  
 SCALE: N.T.S.