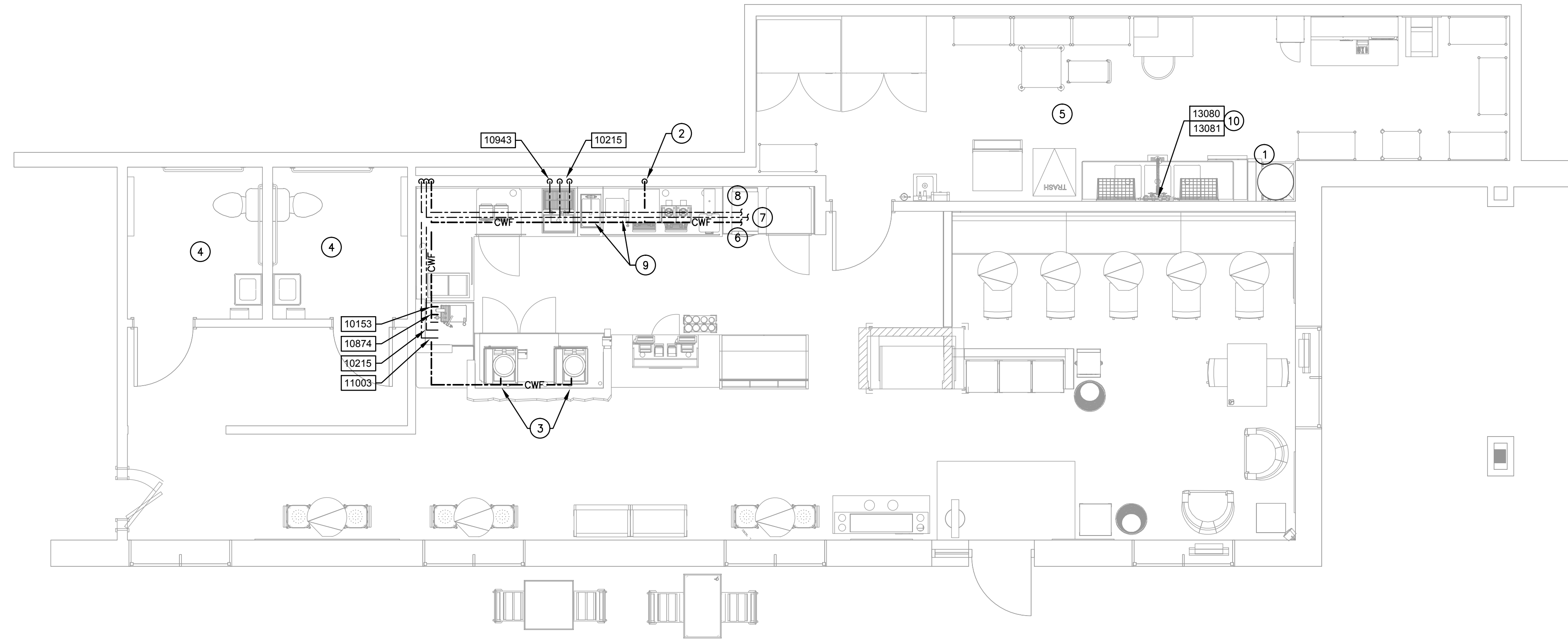


SPECIALTY EQUIPMENT SCHEDULE - "E"			
DESIGN ID	COUNT	DESCRIPTION	COMMENTS
ICE			
10344	1	ICE - BIN DROP IN 90LB 40KG	1" ID - INSULATED

PLUMBING FIXTURE SCHEDULE - "P"			
DESIGN ID	COUNT	DESCRIPTION	COMMENTS
FAUCET			
10153	1	FAUCET - WATER TOWER - 12IN 305MM	1/2" CWF w/BFP
10215	2	FAUCET - DOUBLE LABORATORY WITH SWING SPOUT	3/4" H&CW
10874	1	FAUCET - HOT WATER DISPENSER GOOSENECK	1/4" CWF
10943	1	FAUCET - SINGLE LABORATORY WITH SWING SPOUT	3/4" CW
11003	1	FAUCET - DIPPERWELL	1/2" CW w/BFP. 2.2 GPM aerator outlet. Metered faucet with 0.25 gallons per cycle.
FILTER			
13080	1	FILTER - HEAD QUAD	
13081	4	FILTER - CARBON FILTER CARTRIDGE	
SINK			
10505	1	NEW WORK SINK	1-1/2" ID
FLOOR DRAINS			
10294	1	DRAIN - FLOOR SINK SQUARE - 12in	3" D. ZURN MODEL # FD2375-NH3 OR EQUAL
10726	1	DRAIN - GRATE HALF SQUARE - 12IN 305MM	1/2 GRATE FOR ZURN MODEL # FD2375-NH3 OR EQUAL



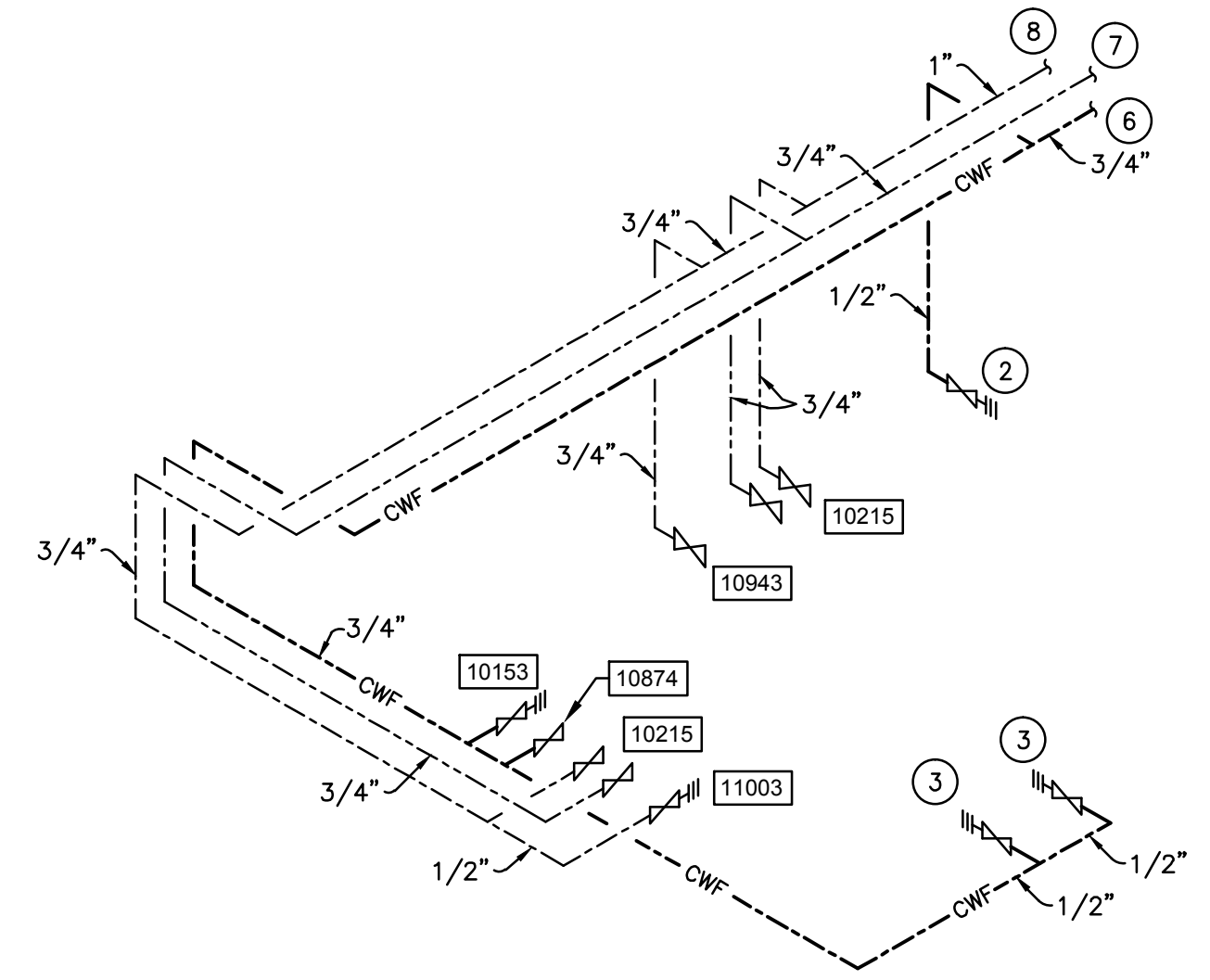
**1 PLUMBING SUPPLY PLAN**  
1/4" = 1'-0"

**PLUMBING SUPPLY NOTES**

- A. SEE PLUMBING SPECIFICATIONS FOR FURTHER REQUIREMENTS.
- B. ALL PLUMBING LINES TO BE ROUTED SUCH THAT THEY ARE NOT VISIBLE TO CUSTOMERS EXCEPT WHERE FIRST APPROVED BY STARBUCKS AT EXPOSED CEILING AREAS.
- C. REFER TO MANUFACTURER SPECIFICATIONS FOR LOCATION OF CONNECTIONS UNLESS OTHERWISE NOTED.
- D. COORDINATE WITH ELECTRICAL CONTRACTOR FOR POWER CONNECTION TO ALL PLUMBING EQUIPMENT.
- E. DIMENSIONS ARE TO FINISH FACE UNLESS OTHERWISE NOTED.
- F. REFER TO DETAIL SHEETS FOR PLUMBING FITTINGS LOCATED IN CASEWORK.
- G. CONTRACTOR SHALL CONTACT WATER FILTER SUPPLIER 10-DAYS (MINIMUM) BEFORE THE TIME THAT THE FILTER SYSTEM IS TO BE STARTED UP.
- H. VERIFY PROPER WATER FILTER SYSTEM WITH WATER TEST RESULTS.
- J. INSULATE ALL PIPING INCLUDING PIPES AT BAR AND IN CASEWORK PER THE REQUIREMENTS LISTED ON THE PLUMBING SPECIFICATIONS SHEET.
- K. PAINT ALL NEW AND EXISTING EXPOSED PIPING PER THE ARCHITECTURAL SHEETS.
- L. FURNISH AND INSTALL A COMPLETE AND OPERATING SYSTEM. ALL ITEMS ARE NOT NECESSARILY SHOWN.
- M. PLUMBING CONTRACTOR RESPONSIBLE FOR SITE INVESTIGATION PRIOR TO START OF WORK TO REVEAL FULL SCOPE OF WORK.
- O. ANY EXISTING WATER LINES WHICH WILL NOT BE REUSED SHALL BE REMOVED BACK TO MAIN AND CAPPED AS REQUIRED.

**SHEET NOTES**

- 1. EXISTING WATER HEATER TO REMAIN FOR FUTURE USE. ENSURE THAT WATER HEATER IS FULLY FUNCTIONING. CLEAN ALL COMPONENTS. ENSURE THERE ARE NO LEAKS FROM WATER HEATER.
- 2. EXISTING COFFEE BREWER TO BE RELOCATED TO SHOWN LOCATION. PROVIDE 1/2" CWF TO COFFEE BREWER. INSTALL SHUT-OFF VALVE IN CABINET AT 24" AFF; REDUCE TO 3/8" AT UNIT.
- 3. EXISTING ESPRESSO MACHINE TO BE RELOCATED TO SHOWN LOCATION. PROVIDE 1/2" CWF TO ESPRESSO MACHINE. CONNECT 3/8" COMPRESSION BRAIDED STAINLESS STEEL HOSE FROM SHUT-OFF VALVE TO ESPRESSO MACHINE WATER INLET.
- 4. FIXTURES AND EQUIPMENT IN RESTROOM EXISTING TO REMAIN. CLEAN AND LEAVE FIXTURES IN LIKE NEW CONDITION. VERIFY ALL CONNECTIONS FOR WATER TIGHT SEAL.
- 5. FIXTURES AND EQUIPMENT IN WORKROOM EXISTING TO REMAIN UNLESS NOTED OTHERWISE. CLEAN AND LEAVE FIXTURES IN LIKE NEW CONDITION. VERIFY ALL CONNECTIONS FOR WATER TIGHT SEAL.
- 6. CONNECT NEW 3/4" CWF LINE TO EXISTING LINE OF SAME SIZE OR LARGER.
- 7. CONNECT NEW 3/4" HW LINE TO EXISTING LINE OF SAME SIZE OR LARGER.
- 8. CONNECT NEW 1" CW LINE TO EXISTING LINE OF SAME SIZE OR LARGER.
- 9. EXISTING SINK TO REMAIN.
- 10. EXISTING WATER FILTRATION SYSTEM TO BE REPLACED WITH NEW.



**2 PLUMBING WATER RISER**  
NO SCALE

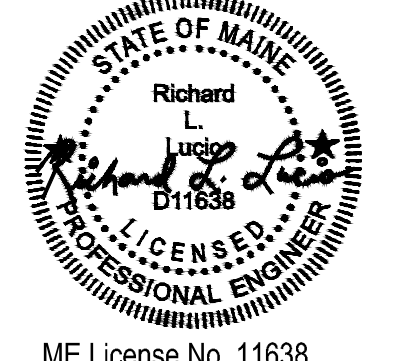


**STARBUCKS COFFEE COMPANY**  
2401 UTAH AVENUE SOUTH  
SEATTLE, WASHINGTON 98134  
(206) 318-1575

THESE DRAWINGS AND SPECIFICATIONS ARE CONFIDENTIAL AND SHALL REMAIN THE SOLE PROPERTY OF STARBUCKS CORPORATION, WHICH IS THE OWNER OF THE COPYRIGHT IN THIS WORK. THEY SHALL NOT BE REPRODUCED (IN WHOLE OR IN PART), SHARED WITH THIRD PARTIES OR USED IN ANY MANNER ON OTHER PROJECTS OR EXTENSIONS TO THIS PROJECT WITHOUT THE PRIOR WRITTEN CONSENT OF STARBUCKS CORPORATION. THESE DRAWINGS AND SPECIFICATIONS ARE INTENDED TO EXPRESS DESIGN INTENT FOR A PROTOTYPICAL STARBUCKS STORE (WHICH IS SUBJECT TO CHANGE AT ANYTIME) AND DO NOT REFLECT ACTUAL SITE CONDITIONS. NEITHER PARTY SHALL HAVE ANY OBLIGATION NOR LIABILITY TO THE OTHER (EXCEPT STATED ABOVE) UNTIL A WRITTEN AGREEMENT IS FULLY EXECUTED BY BOTH PARTIES.

**T | P | G |**  
**ARCHITECTURE**  
TPG Architecture, LLP  
360 Park Avenue, South, New York, New York 10010  
212 768 0800 212 768 1597 fax  
www.tpgarchitecture.com

Richard L. Lucio, PE



ME License No. 11638  
Engineer of Record

Revision Schedule			
Rev	Date	By	Description

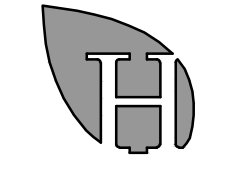
PROJECT NAME:  
**NORTHGATE PLAZA**  
PROJECT ADDRESS:  
**91 AUBURN STREET,  
PORTLAND ME 04103**

STORE #: 2830  
PROJECT #: 22764-021  
HEI PROJECT #: R13-1646.004  
CONCEPT:  
PALETTE:  
ISSUE DATE: 9/19/2013  
DESIGN MANAGER: Eta Kliger  
LEED @AP:  
PRODUCTION DESIGNER: AH  
DRAWINGS BY: KAH/CDS/RLL

SHEET TITLE: **PLUMBING SUPPLY PLAN**

SCALE: As indicated

SHEET NUMBER: **P-1112**



**HALLBERG ENGINEERING**  
Mechanical/Electrical Consulting Engineers  
1750 Commerce Court  
White Bear Lake, MN 55110  
(651) 748-1100 • Fax (651) 748-9370