



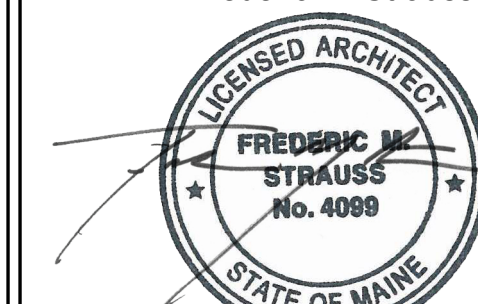
STARBUCKS COFFEE COMPANY
2401 UTAH AVENUE SOUTH
SEATTLE, WASHINGTON 98134
(206) 318-1575

THESE DRAWINGS AND SPECIFICATIONS ARE CONFIDENTIAL AND SHALL REMAIN THE SOLE PROPERTY OF STARBUCKS CORPORATION, WHICH IS THE OWNER OF THE COPYRIGHT IN THIS WORK. THEY SHALL NOT BE REPRODUCED (IN WHOLE OR IN PART), SHARED WITH THIRD PARTIES OR USED IN ANY MANNER ON OTHER PROJECTS OR EXTENSIONS TO THIS PROJECT WITHOUT THE PRIOR WRITTEN CONSENT OF STARBUCKS CORPORATION. THESE DRAWINGS AND SPECIFICATIONS ARE INTENDED TO EXPRESS DESIGN INTENT FOR A PROTOTYPICAL STARBUCKS STORE (WHICH IS SUBJECT TO CHANGE AT ANY TIME) AND DO NOT REFLECT ACTUAL SITE CONDITIONS. NEITHER PARTY SHALL HAVE ANY OBLIGATION NOR LIABILITY TO THE OTHER (EXCEPT STATED ABOVE) UNTIL A WRITTEN AGREEMENT IS FULLY EXECUTED BY BOTH PARTIES.

T P G ARCHITECTURE

TPG Architecture, LLP
360 Park Avenue, South, New York, New York 10010
212 768 0800 212 768 1597 fax
www.tpgarchitecture.com

Frederic M. Strauss



ME License No. 4099
Architect of Record

Revision Schedule			
Rev	Date	By	Description

PROJECT NAME:
NORTHGATE PLAZA

PROJECT ADDRESS:
**91 AUBURN STREET,
PORTLAND ME 04103**

STORE #: 2830
PROJECT #: 22764-021
CONCEPT:
PALETTE:
ISSUE DATE: 12/19/2013
DESIGN MANAGER: Eta Kliger
LEED® AP:
PRODUCTION DESIGNER: AH
CHECKED BY: Allison Stadnyck

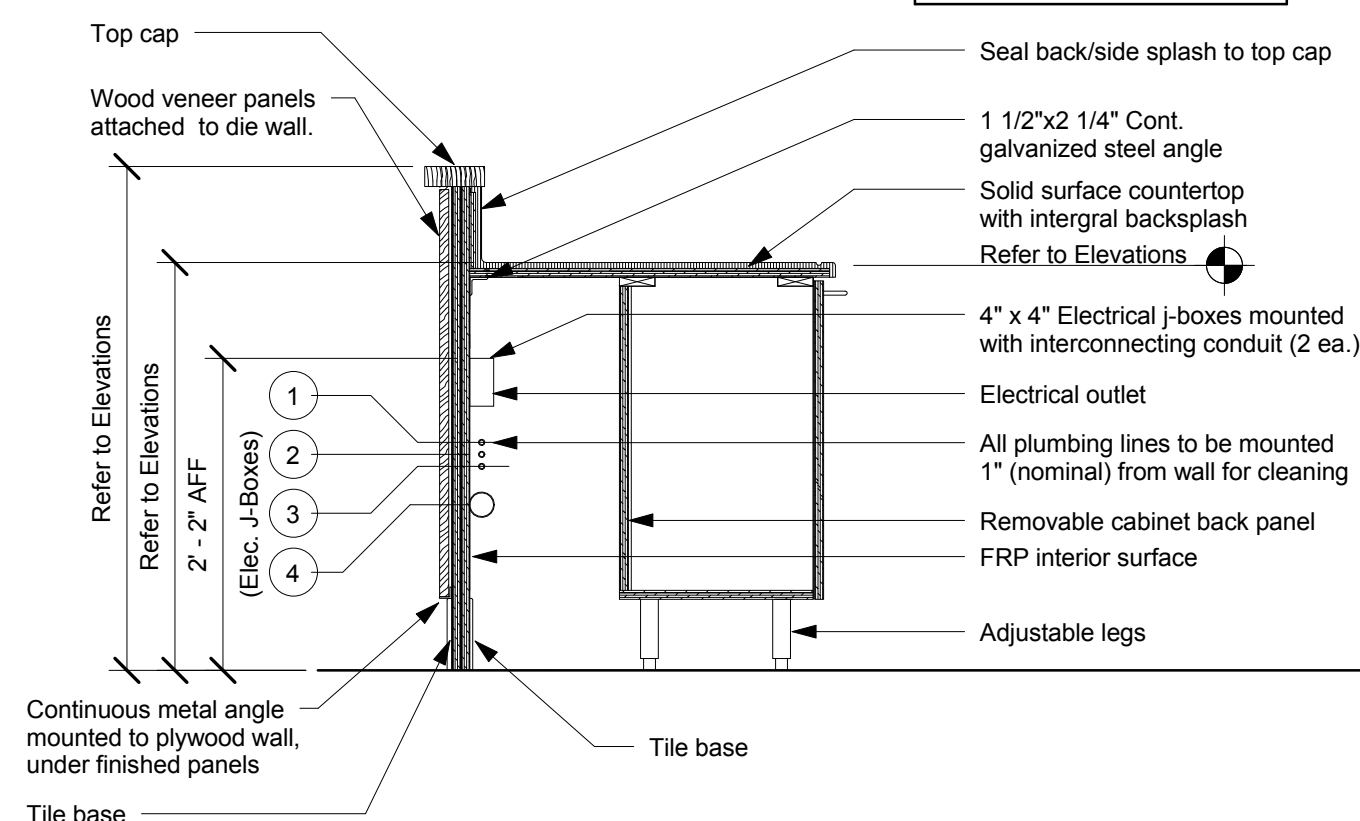
SHEET TITLE:
DESIGN DETAILS

SCALE: As indicated

SHEET NUMBER:
I-5001

Notes

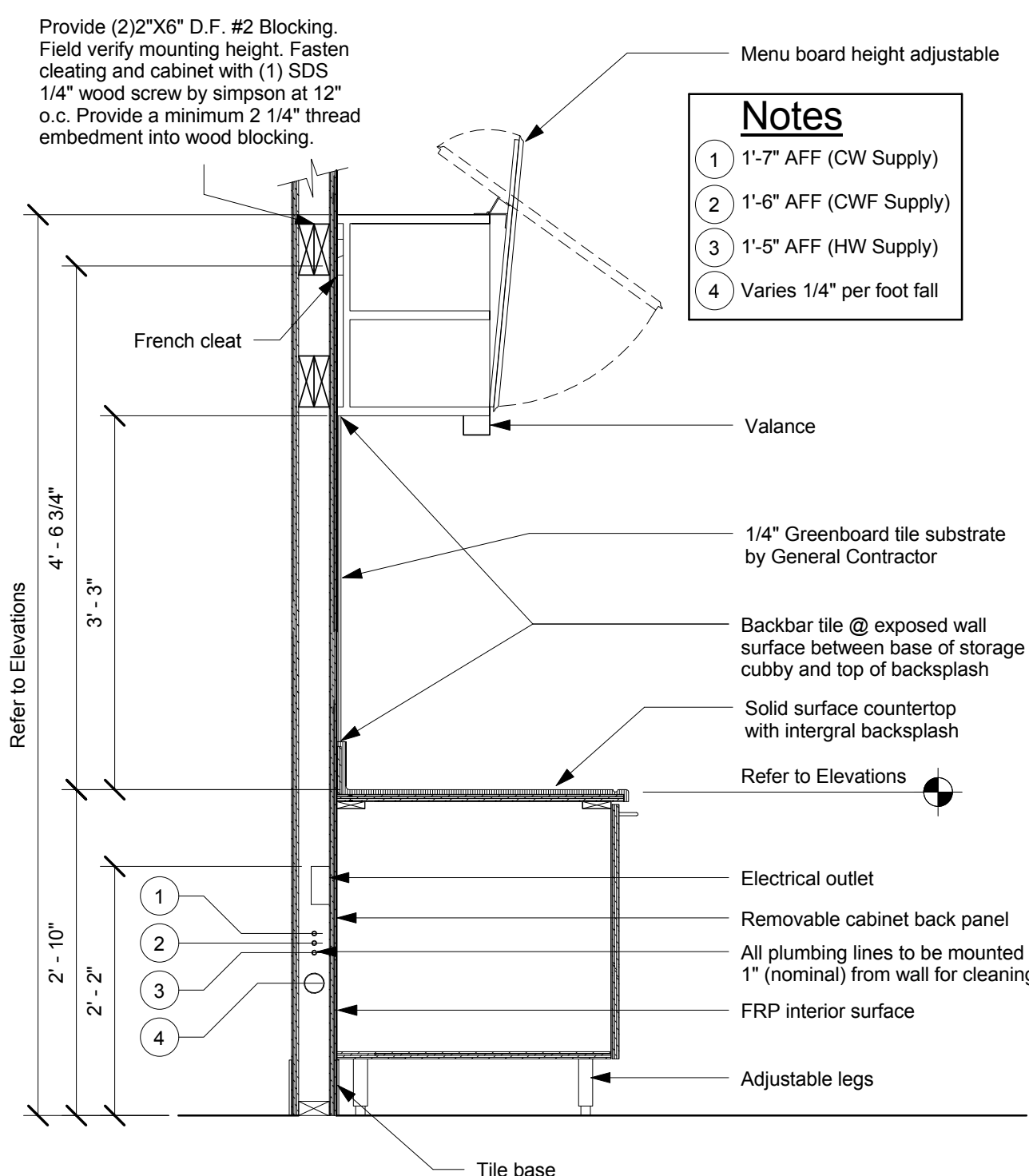
- 1'-7" AFF (CW Supply)
- 1'-6" AFF (CWF Supply)
- 1'-5" AFF (HW Supply)
- Varies 1/4" per foot fall



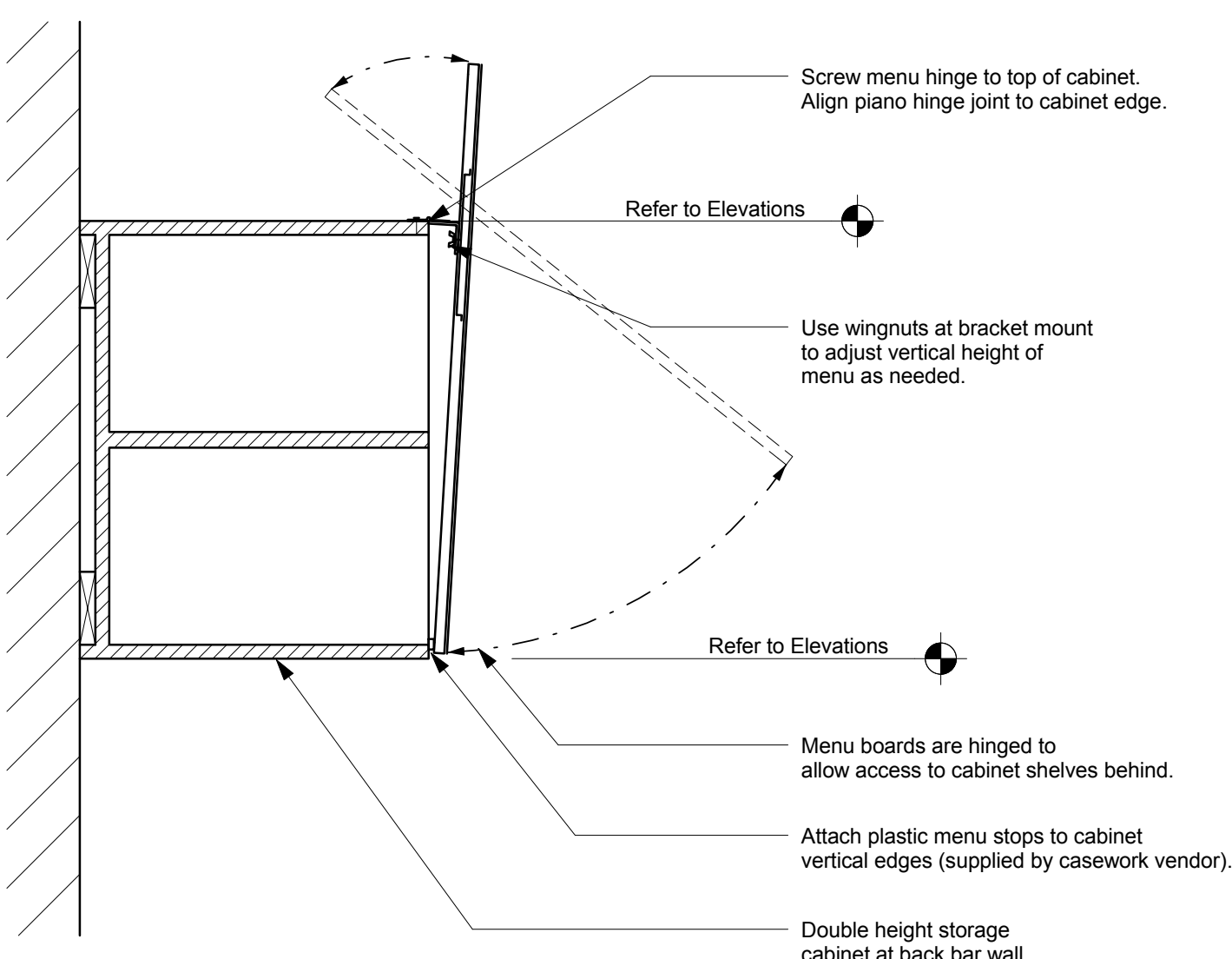
3 Wall Section at Diewall
Scale: 3/4" = 1'-0"

Notes

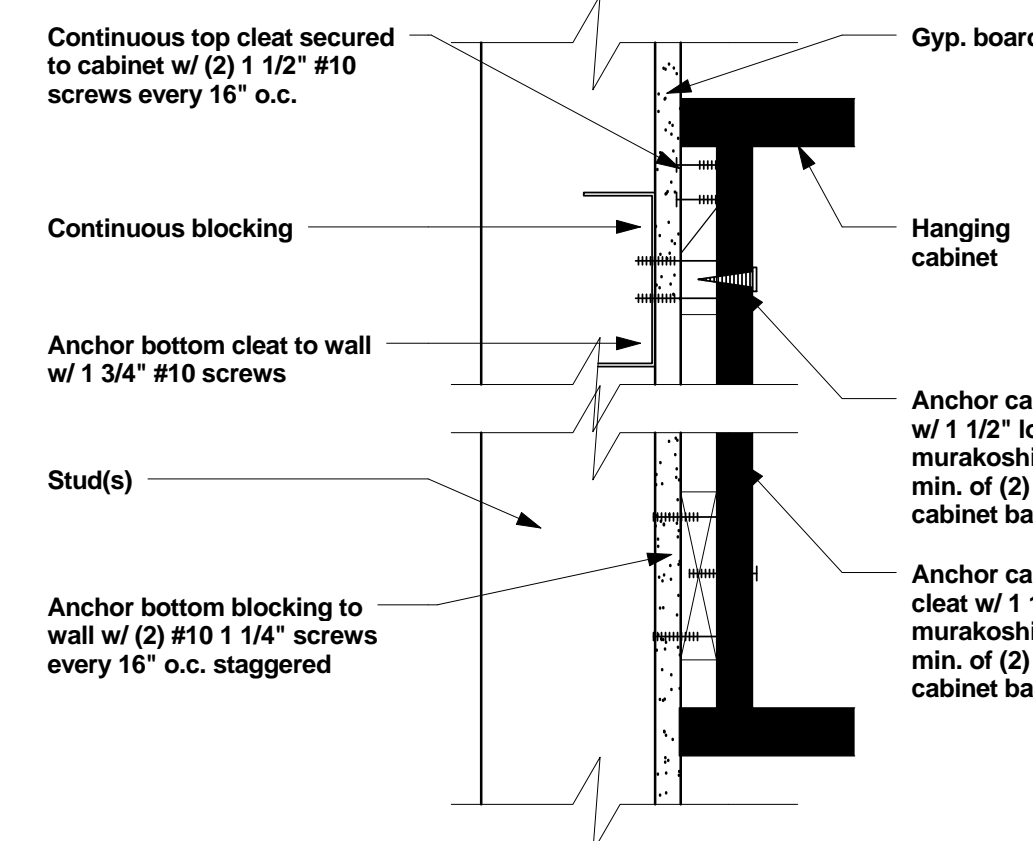
- 1'-7" AFF (CW Supply)
- 1'-6" AFF (CWF Supply)
- 1'-5" AFF (HW Supply)
- Varies 1/4" per foot fall



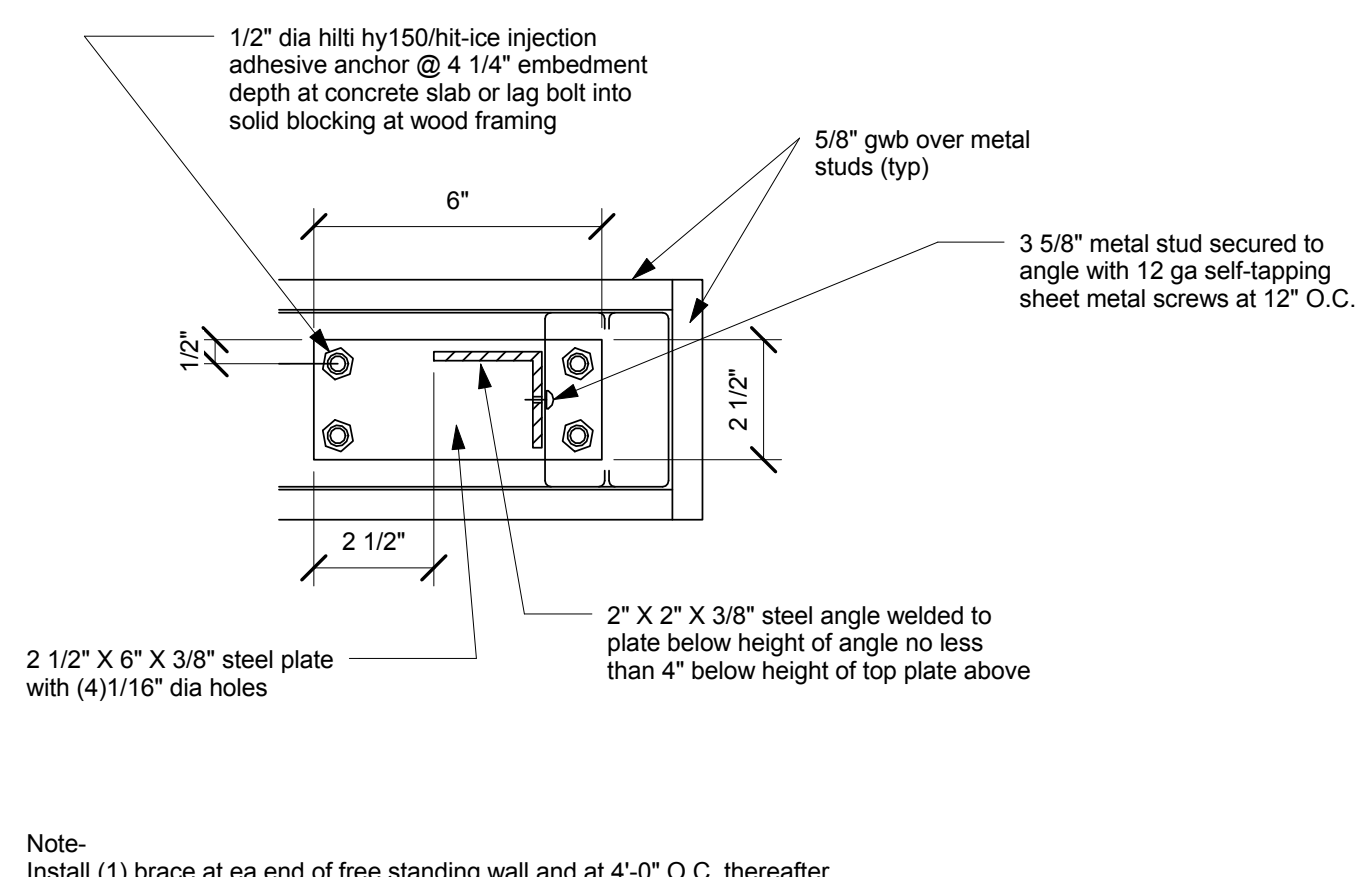
1 Wall Section at Backbar
Scale: 3/4" = 1'-0"



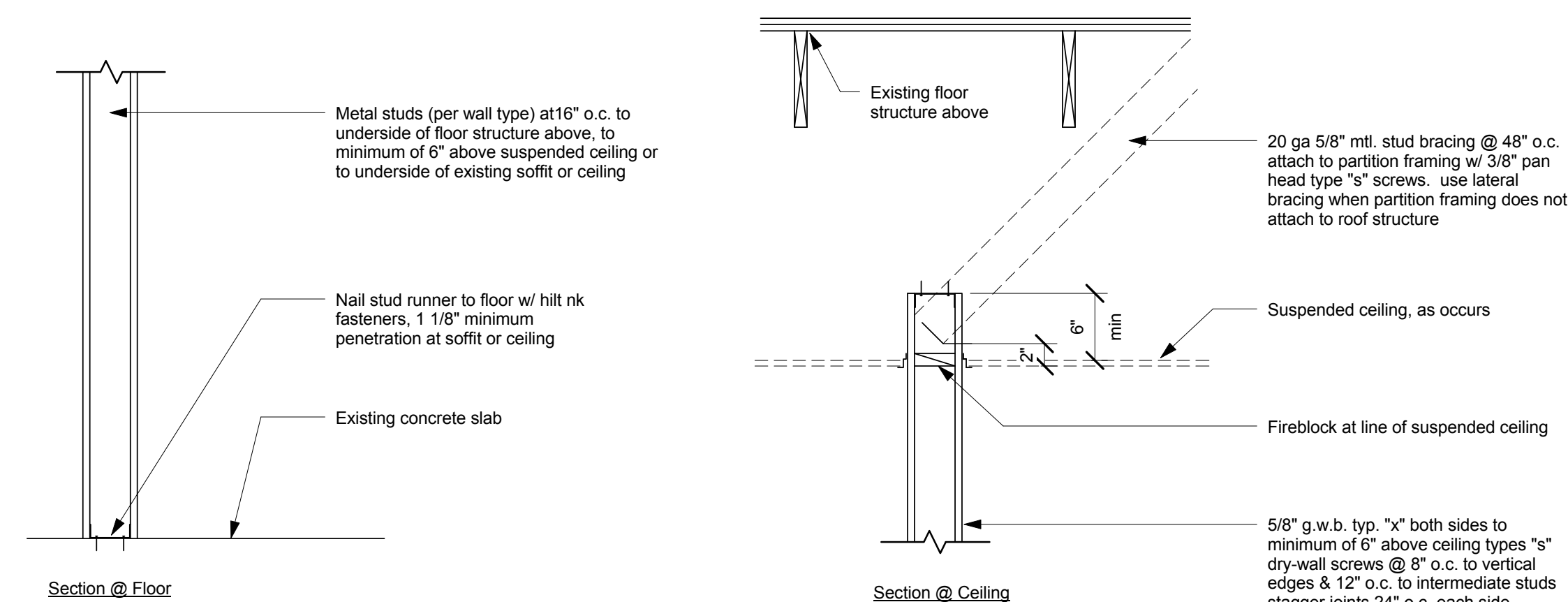
2 Casework Menu Mounting
Scale: 1/2" = 1'-0"



4 Anchor Detail
Scale: 3" = 1'-0"



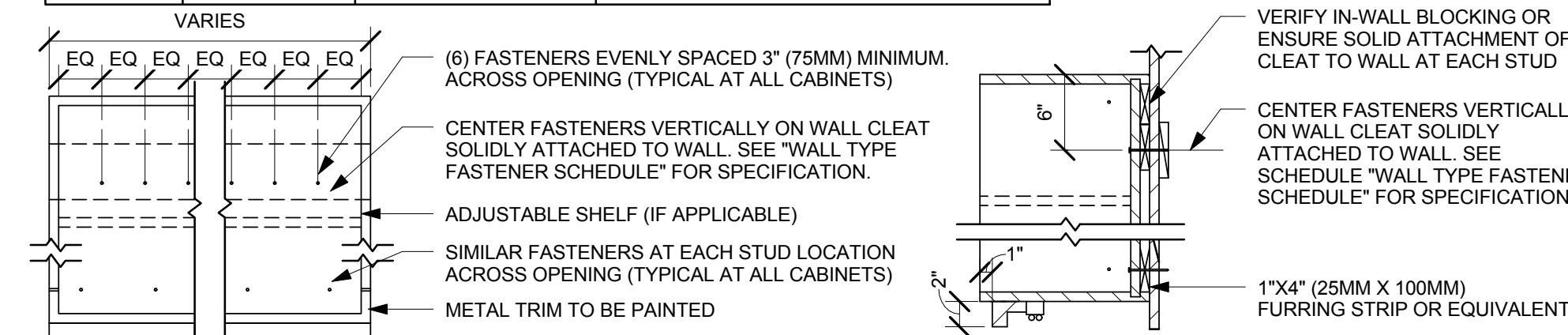
5 Low Wall Brace
Scale: 3" = 1'-0"



6 New Partition Wall 6" Above Ceiling
Scale: 1" = 1'-0"

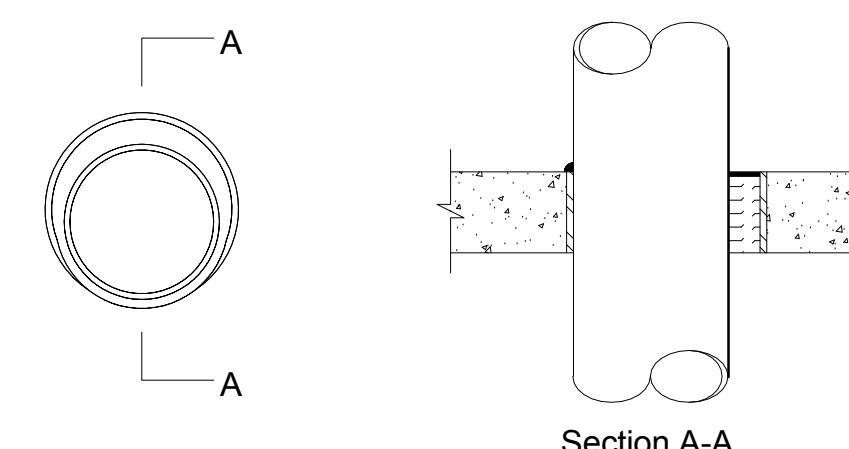
WALL TYPE	WALL BLOCKING	FASTENERS	NOTES
WOOD FRAME	X	#6 X3" (75MM) WD OR EQUIVALENT	DOR-REFER TO ARCHITECT OF RECORD WALL BLOCKING DETAIL NDR-REFER TO WALL BLOCKING DETAIL THIS SHEET
METAL FRAME	X	#6CT. X1 1/4" (30MM) MTL/WD OR EQUIVALENT	DOR-REFER TO ARCHITECT OF RECORD WALL BLOCKING DETAIL NDR-REFER TO WALL BLOCKING DETAIL THIS SHEET
CMU		MIN. 5/16" X3" (8MM X 75MM) TAPCON OR EQUIVALENT	SPACE PER DETAIL THIS SHEET
WCT		MIN. 1/4" X3" (7MM X 75MM) SLEEVE ANCHOR OR EQUIVALENT	SPACE PER DETAIL THIS SHEET
BRICK		MIN. 1/4" X1" (7MM X 25MM) WEDGE ANCHOR OR EQUIVALENT	SPACE PER DETAIL THIS SHEET AVOID SETTING ANCHORS IN MORTAR JOINTS

STUD WALL BLOCKING REQUIREMENTS:
WOOD STUD WALLS REQUIRE MIN. 2"x6" (50MMX150MM) WOOD BLOCKING SECURED FLUSH TO STUD FACE WITH (3) 10D NAILS (OR EQUIVALENT)
METAL STUD WALLS REQUIRE MIN. 2"x6" (50MMX150MM) WOOD BLOCKING SECURED FLUSH TO STUD FACE WITH MIN. (3) #6 CT. 1.25" (30MM) SCREWS (OR EQUIVALENT)



7 UPPER CABINET ATTACHMENT
Scale: 1" = 1'-0"

System No. CA-J-1226
F Rating = 3-Hr.
T Rating = 0-Hr.
L Rating at Ambient - Less than 1 CFM/Sq. Ft.
L Rating at 400F - 4 CFM/Sq. Ft.



Floor or Wall Assembly -- Min 4-1/2 in. thick reinforced lightweight or normal weight (100-150 pcf) concrete. Wall may also be constructed of any UL Classified opening is 32 in.

Metallic Sleeve -- (Optional) Nom 32 in. diameter (or smaller) Schedule 40 (or heavier) steel sleeve cast or grouted into floor or wall assembly, flush with floor or wall surfaces or extending a max of 3 in. above floor or beyond both surfaces of wall.

Thorough Penetrant -- One metallic pipe, tube or conduit to be installed either concentrically or eccentrically within the firestop system. The annular space between penetrant and periphery of opening shall be min 0 in. (point contact) to max 1-7/8 in. Penetrant may be installed with continuous point contact. Penetrant to be rigidly supported on both sides of floor or wall assembly. The following types and sizes of metallic penetrants may be used: Concrete Blocks* Max diameter of

Steel Pipe -- Nom 30 in. diameter (or smaller) Schedule 10 (or heavier) steel pipe.
Iron Pipe -- Nom 30 in. diameter (or smaller) cast or ductile iron pipe.
Copper Pipe -- Nom 6 in. diameter (or smaller) Regular (or heavier) copper pipe.
Copper Tubing -- Nom 6 in. diameter (or smaller) Type L (or heavier) copper tubing.
Conduit -- Nom 6 in. diameter (or smaller) steel conduit.
Conduit -- Nom 4 in. diameter (or smaller) steel electrical metallic tubing (EMT).

Firestop System -- The firestop system shall consist of the following:

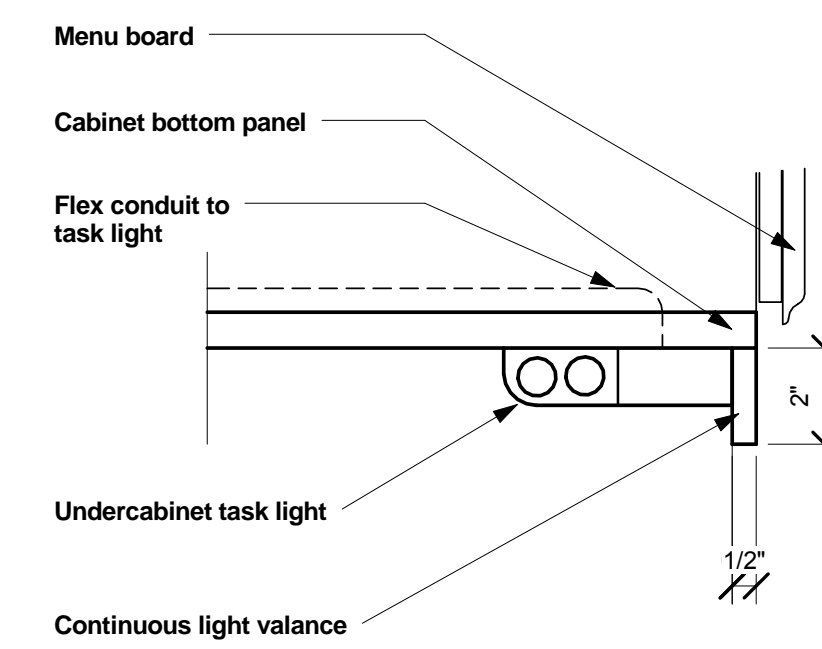
Packing Material -- Min 4 in. thickness of min 4 pcf mineral wool batt insulation firmly packed into opening as a permanent form. Packing material to be recessed from top surface of floor or sleeve or from both surfaces of wall or sleeve as required to accommodate the required thickness of fill material.

Fill, Void, or Cavity Material -- Sealant -- Min 1/4 in. thickness of fill material applied within the annulus, flush with top surface of floor or sleeve or with both surfaces of wall or sleeve. At the point or continuous contact locations between penetrant and concrete or sleeve, a min 1/4 in. diameter bead of fill material shall be applied at the concrete or sleeve/pipe penetrant interface on the top surface of floor and on both surfaces of wall.

Hilt Construction Chemicals, Division of
-- F.S One Sealant

*Bearing the UL Classification Mark

8 Task Light Under Cabinet
Scale: 3" = 1'-0"



9 Floor Penetration Fire Stop
Scale: 1/4" = 1'-0"