



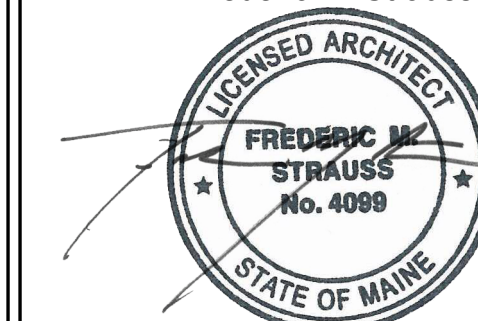
STARBUCKS COFFEE COMPANY
 2401 UTAH AVENUE SOUTH
 SEATTLE, WASHINGTON 98134
 (206) 318-1575

THESE DRAWINGS AND SPECIFICATIONS ARE CONFIDENTIAL AND SHALL REMAIN THE SOLE PROPERTY OF STARBUCKS CORPORATION, WHICH IS THE OWNER OF THE COPYRIGHT IN THIS WORK. THEY SHALL NOT BE REPRODUCED (IN WHOLE OR IN PART), SHARED WITH THIRD PARTIES OR USED IN ANY MANNER ON OTHER PROJECTS OR EXTENSIONS TO THIS PROJECT WITHOUT THE PRIOR WRITTEN CONSENT OF STARBUCKS CORPORATION. THESE DRAWINGS AND SPECIFICATIONS ARE INTENDED TO EXPRESS DESIGN INTENT FOR A PROTOTYPICAL STARBUCKS STORE (WHICH IS SUBJECT TO CHANGE AT ANY TIME) AND DO NOT REFLECT ACTUAL SITE CONDITIONS. NEITHER PARTY SHALL HAVE ANY OBLIGATION NOR LIABILITY TO THE OTHER (EXCEPT STATED ABOVE) UNTIL A WRITTEN AGREEMENT IS FULLY EXECUTED BY BOTH PARTIES.

T P G
 ARCHITECTURE

TPG Architecture, LLP
 360 Park Avenue, South, New York, New York 10010
 212 768 0800 212 768 1597 fax
 www.tpgarchitecture.com

Frederic M. Strauss



ME License No. 4099
 Architect of Record

Revision Schedule

| Rev | Date | By | Description |
|-----|------|----|-------------|
| | | | |
| | | | |
| | | | |

PROJECT NAME:
NORTHGATE PLAZA

PROJECT ADDRESS:
 91 AUBURN STREET,
 PORTLAND ME 04103

STORE #: 2830
 PROJECT #: 22764-021
 CONCEPT:
 PALETTE:
 ISSUE DATE: 12/19/2013
 DESIGN MANAGER: Eta Kliger
 LEED® AP:
 PRODUCTION DESIGNER: AH
 CHECKED BY: Allison Stadnyck

SHEET TITLE:
LIGHTING DIMENSION PLAN

SCALE: As indicated

SHEET NUMBER:
I-1109

REFLECTED CEILING PLAN NOTES

A. IF REQUIRED BY LOCAL CODE, GENERAL CONTRACTOR TO PROVIDE SEMI-RECESSED SPRINKLER HEADS WITH POLISHED CHROME ESCUTCHEONS CENTERED IN ACOUSTICAL CEILING TILE. IF PENDANT HEADS ARE REQUIRED IN GYPSUM SOFFIT OVER FRONTBAR, CONCEAL SUPPLY PIPING WITHIN SOFFIT. GENERAL CONTRACTOR TO SUBMIT SPRINKLER LAYOUT TO STARBUCKS' CONSTRUCTION MANAGER FOR APPROVAL PRIOR TO INSTALLATION.

B. GENERAL CONTRACTOR TO PROVIDE AND LOCATE SPRINKLERS PER LOCAL CODES. CONTACT STARBUCKS CONSTRUCTION MANAGER IF DESIGN INTENT IS AFFECTED.

C. WHERE ACOUSTICAL CEILING MEETS WALL, PROVIDE ANGLE WALL MOLDING FOR REVEAL. MATCH CEILING GRID COLOR WHEN APPLICABLE.

D. LEAVE (10) ADDITIONAL RETAIL CEILING TILES, TO MATCH RETAIL CEILING PAINT COLOR, ABOVE THE WORKROOM CEILING AT MANAGER'S DESK FOR FUTURE USE.

E. PROVIDE GROMMET AT ALL CEILING PENETRATIONS FOR FIXTURES OR SUPPORTS.

F. HEATING, VENTILATING, AND AIR CONDITIONING (HVAC) SHOWN FOR DESIGN INTENT ONLY. CONTACT PROJECT MANAGER IF CHANGED.

G. DIFFUSERS AND RETURNS AT BACKBAR IN ACOUSTICAL CEILING TILE TO BE CENTERED IN TILE, PAINTED TO MATCH ADJACENT FINISHES, TYPICAL.

H. PAINT ALL HVAC DUCTS, HVAC DIFFUSERS, RECESSED SPEAKERS AND LIGHT TRIM RINGS THE SAME COLOR AS CEILING OR SOFFIT. TYPICAL THROUGHOUT RETAIL PORTION OF STORE.

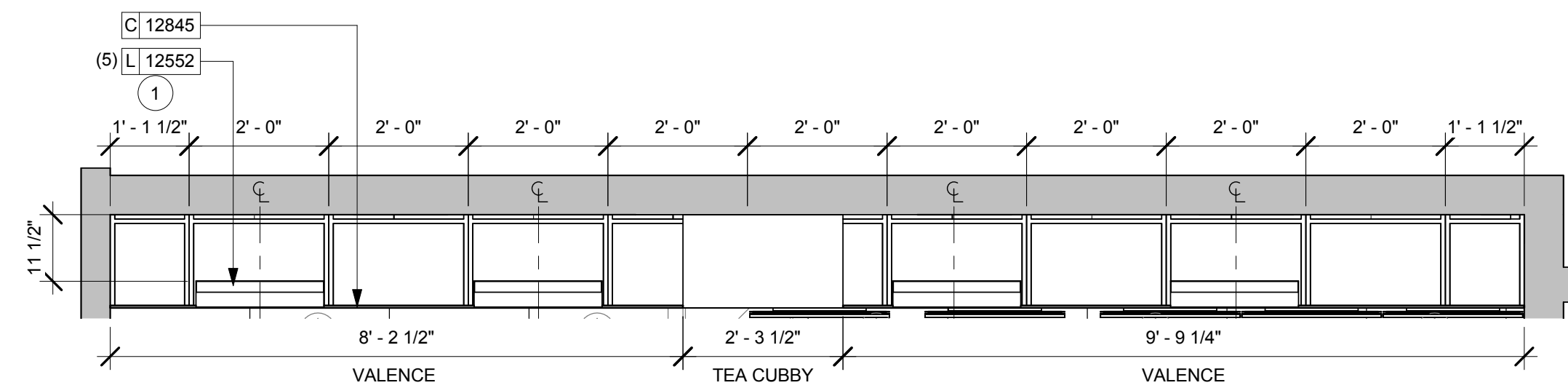
J. PAINT SUBSTITUTIONS ARE NOT ALLOWED. USE STARBUCKS' NATIONAL ACCOUNT "COLOR CODE" WHEN ORDERING PAINTS. SEE SCHEDULE SHEETS FOR SCHEDULES.

K. SEE LIGHTING DESIGN PLAN FOR FIXTURE TYPES AND LOCATION DIMENSIONS.

SHEET NOTES

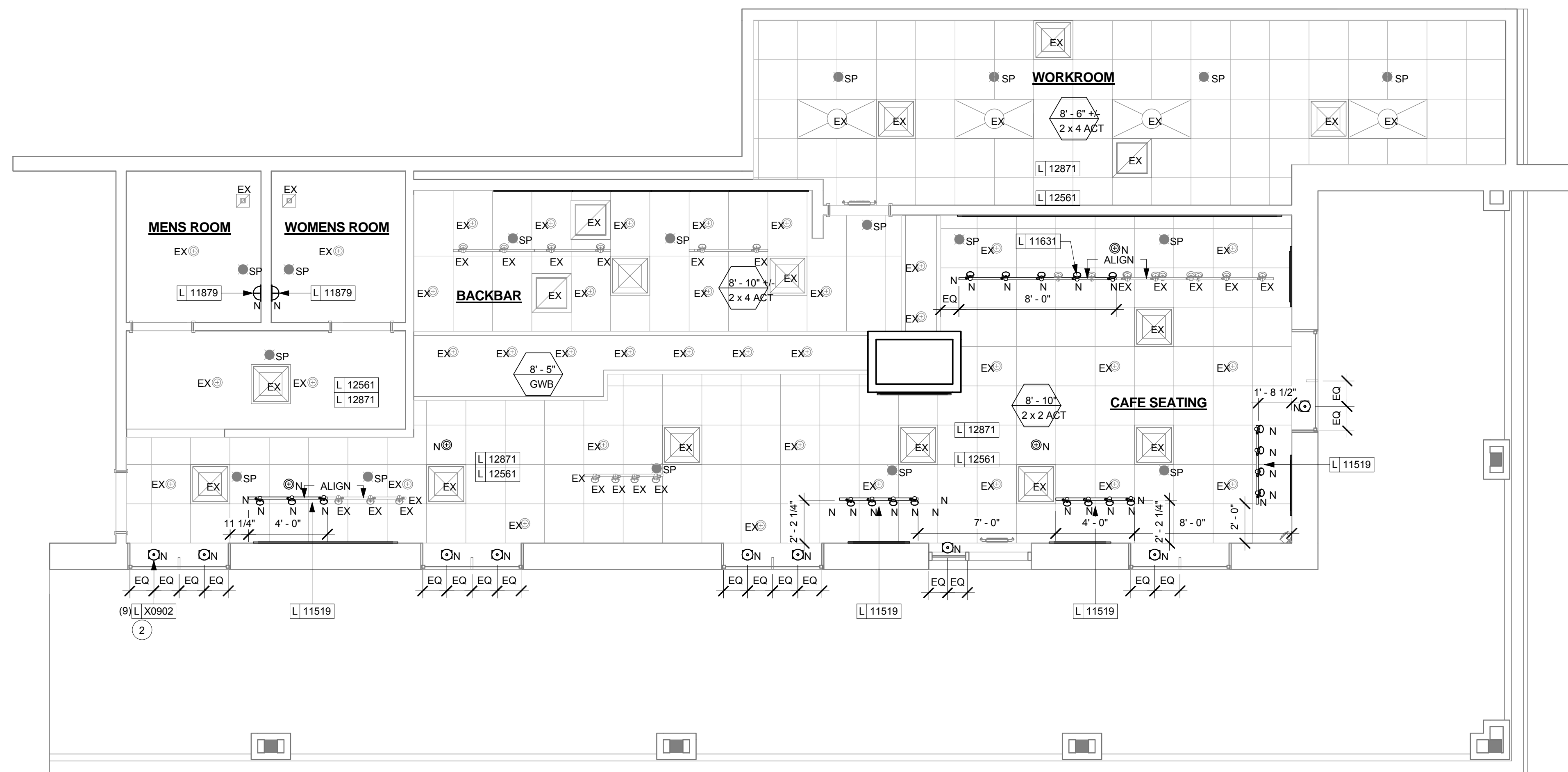
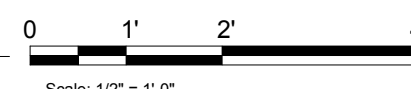
1. UNDER COUNTER TASK LED LIGHTING AS INDICATED.
2. NEW PENDANT LIGHTS TO BE CENTERED WITHIN CORRESPONDING WINDOW PANE.

| LIGHTING FIXTURE SCHEDULE - "L" | | | | | |
|---------------------------------|-------|--|-------|--|--|
| DESIGN ID | COUNT | DESCRIPTION | RESP. | BULB | COMMENTS |
| X0902 | 9 | PENDANT - REFLECTOR FILAMENT 7 1/2" PENDANT - AGED STEEL | GC | 1910 SQUIRREL - CAGE FILAMENT BULB - 2 1/4" DIAM., 5"L | RESTORATION HARDWARE, ITEM # 68060274 VSTL |
| LAMP | | | | | |
| 12871 | 4 | CFL BIAIX 10-19W | VD | | FSGI |
| RECESSED CAN | | | | | |
| 12561 | 4 | CAN - RECESSED HOUSING - 5IN 125MM - EXISTING CEILING | VD | (1) 12871 - CFL BIAIX 10-19W | FSGI - VESTIBULE LIGHTING |
| 13244 | 4 | CAN - RECESSED TRIM REFLECTOR - 5IN 125MM - WHITE | VD | | FSGI |
| SCONCE | | | | | |
| 11879 | 2 | SCONCE - WALL WASH WITH SHIELD ROUND - WHITE | VD | CFL 28W PIN BASE OR EQUAL | FSGI |
| STRIP | | | | | |
| 12552 | 4 | TASK LIGHT INTEGRATED LED - 22IN 560MM - BLACK | VD | (6) INTEGRAL LED 1W | FSGI - JUMPER CORD REQUIRED WHEN CONNECTING MULTIPLE UNITS |
| TRACK | | | | | |
| 11427 | 20 | TRACK - FIXTURE ENCLOSED - 5IN 125MM - WHITE | VD | (1) 12903 - LED PAR 30S 10-19W NARROW FLOOD | FSGI |
| 11519 | 4 | TRACK - RAIL SURFACE MOUNTED - 48IN 1220MM - BLACK | VD | | FSGI |
| 11631 | 1 | TRACK - RAIL SURFACE MOUNTED - 96IN 2440MM - BLACK | VD | | FSGI |



2 UPPER LIGHTING DIMENSION PLAN

Scale: 1/2" = 1'-0"



1 LIGHTING DIMENSION PLAN

Scale: 1/4" = 1'-0"