

**GENERAL NOTES - PRE-ENGINEERED LIGHT GAUGE STEEL ROOF TRUSSES**

1. ALL MATERIAL AND WORKMANSHIP SHALL BE IN ACCORDANCE WITH THE LATEST EDITION OF AMERICAN IRON AND STEEL INSTITUTE (AISI) STANDARD SPECIFICATION FOR STRUCTURAL STEEL SHAPES AND SIZES. TRUSSES SHALL BE DESIGNED BY AN ENGINEER LICENSED IN THE JURISDICTION WHERE THE WORK IS BEING PERFORMED IN ACCORDANCE WITH THE AISI "NORTH AMERICAN SPECIFICATION FOR THE DESIGN OF COLD FORMED STEEL STRUCTURAL MEMBERS".
2. TRUSS FABRICATOR SHALL SUBMIT TO THE ARCHITECT FOR APPROVAL PRIOR TO FABRICATION, SHOP DRAWINGS BEARING SEAL AND SIGNATURE OF THE DESIGN PROFESSIONAL ENGINEER REGISTERED IN THE STATE OF MAINE. SHOP DRAWINGS SHALL INCLUDE BUT ARE NOT LIMITED TO: TRUSS LAYOUT PLAN, TRUSS DETAIL SHEETS SHOWING CONFIGURATION, DIMENSIONS, LOADS, MEMBER SIZES, MEMBER SIZES AND GAUGE, MEMBER FORCES, CONNECTION PLATE SIZES, AND FABRICATION BRACING REQUIRED.
3. SEE DESIGN LOADS FOR DESIGN LOADS ON TRUSSES.
4. TRUSS ERECTOR SHALL BE RESPONSIBLE FOR DESIGN AND INSTALLATION OF ALL TEMPORARY BRACING REQUIREMENTS.
5. ALL WELDING OF TRUSS COMPONENTS SHALL COMPLY WITH APPLICABLE PROVISIONS OF AMERICAN WELDING SOCIETY AWS D1.1 "STRUCTURAL WELDING CODE-STEEL" AND AWS D1.3 "STRUCTURAL WELDING CODE-SHEET STEEL".
6. ROOF SHEATHING SHALL BE MINIMUM 5/8" APA STRUCTURAL 1 RATED EXTERIOR GRADE SHEATHING (SEE SHEET S-3.5) WITH 1/2" MINIMUM OVERLAP. INTERMEDIATE PANEL EDGES SHALL BE USED AT ALL UNSUPPORTED EDGES. FASTENERS TO INTERMEDIATE PER INDUSTRY STANDARDS.
7. ALL ROOF TRUSSES AND OVERHANGING LT GAGE FRAMING SHALL BE HELD DOWN WITH HURDLE ANCHORS PER TRUSS MANUFACTURER'S REQUIREMENTS.
8. SEE ARCHITECTURAL AND STRUCTURAL DRAWINGS FOR TYPICAL FRAMING DETAILS.

**ROOF FRAMING PLAN NOTES**

TOP OF STEEL BEAMS IS AT ELEV. = 16'-7 1/2" A.F.F. (TYP.) UNLESS NOTED THUSLY (XXX) ON FRAMING PLAN.

ALL DIMENSIONS SHALL BE COORDINATED WITH ARCH'L DRAWINGS. TRUSSES SHOWN FOR SCHEMATIC LAYOUT ONLY. REFER TO ARCH'L TRUSS PROFILES FOR TRUSS DIMENSIONS AND GEOMETRY.

COORDINATE SIZE & LOCATION OF RU FRAMING OPENINGS WITH MECHANICAL DWGS.

FOR INDICATES FACE OF BUILDING.

RTU INDICATES ROOF TOP UNIT. RTUS SHOWN ARE APPROXIMATE. GENERAL CONTRACTOR SHALL VERIFY AND COORDINATE LOCATION AND SIZE OF ALL ROOF TOP UNITS REQUIRED.

\* 200# CONC. LOAD ON TRUSS WHERE INDICATED

— INDICATES CONTINUOUS BEAM FRAMED OVER COLUMN BELOW. SEE DETAIL ON S-3.3

**STRUCTURAL NOTES**

DESIGN LOADS: BLDG IS DESIGNED USING THE MAINE STATE BUILDING CODE (PORTLAND, ME); 2003 INTERNATIONAL BUILDING CODE

GROUND SNOW LOAD ..... 50 PSF

FLAT ROOF SNOW LOAD ..... 35 PSF

SLOPED ROOF LOADS -

TOP CHORD BALANCED SNOW LOAD PS ..... 35 PSF

TOP CHORD UNBALANCED SNOW LOAD ..... 52.5 PSF

LEeward ROOF ..... 0 PSF

TOP CHORD DEAD LOAD ..... 10 PSF (20 PSF AT OVERFRAMING)

BOTTOM CHORD DEAD LOAD ..... 10 PSF

BOTTOM CHORD LIVE LOAD ..... 20 PSF [GABLE TRUSSES ONLY, NOT OVERBUILD OR FLAT CHORD TRUSSES]

MIN. ROOF LIVE LOAD ..... 20 PSF

BASIC WIND SPEED ..... 100 MPH

WIND EXPOSURE CATEGORY ..... B

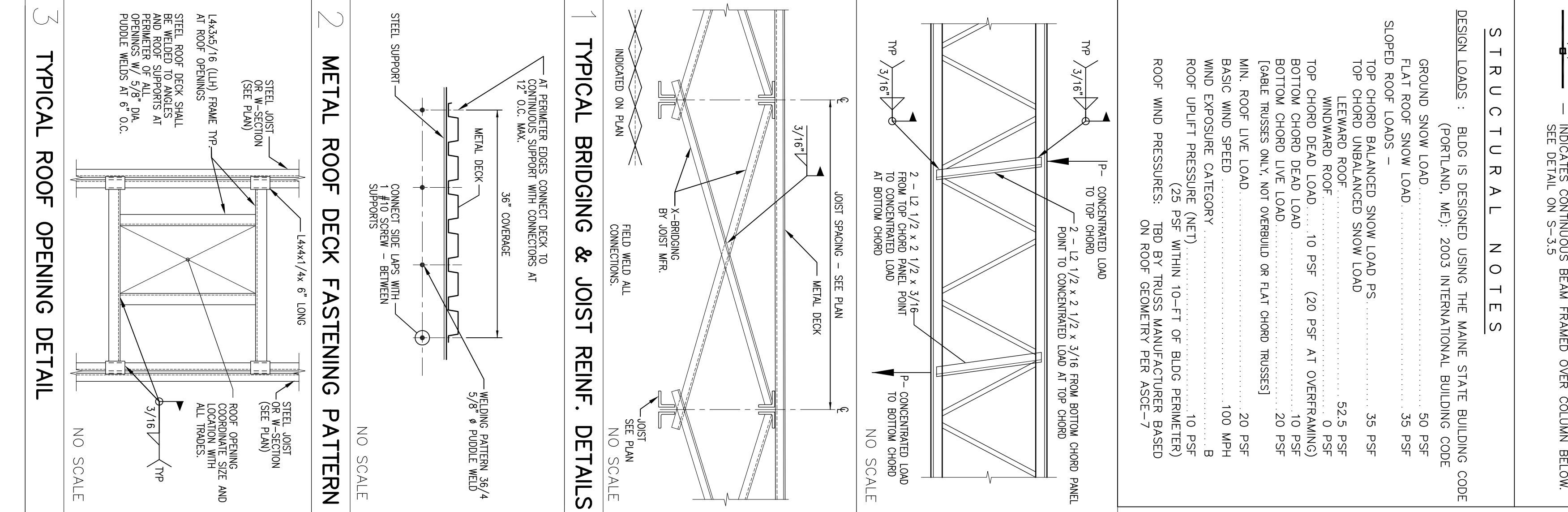
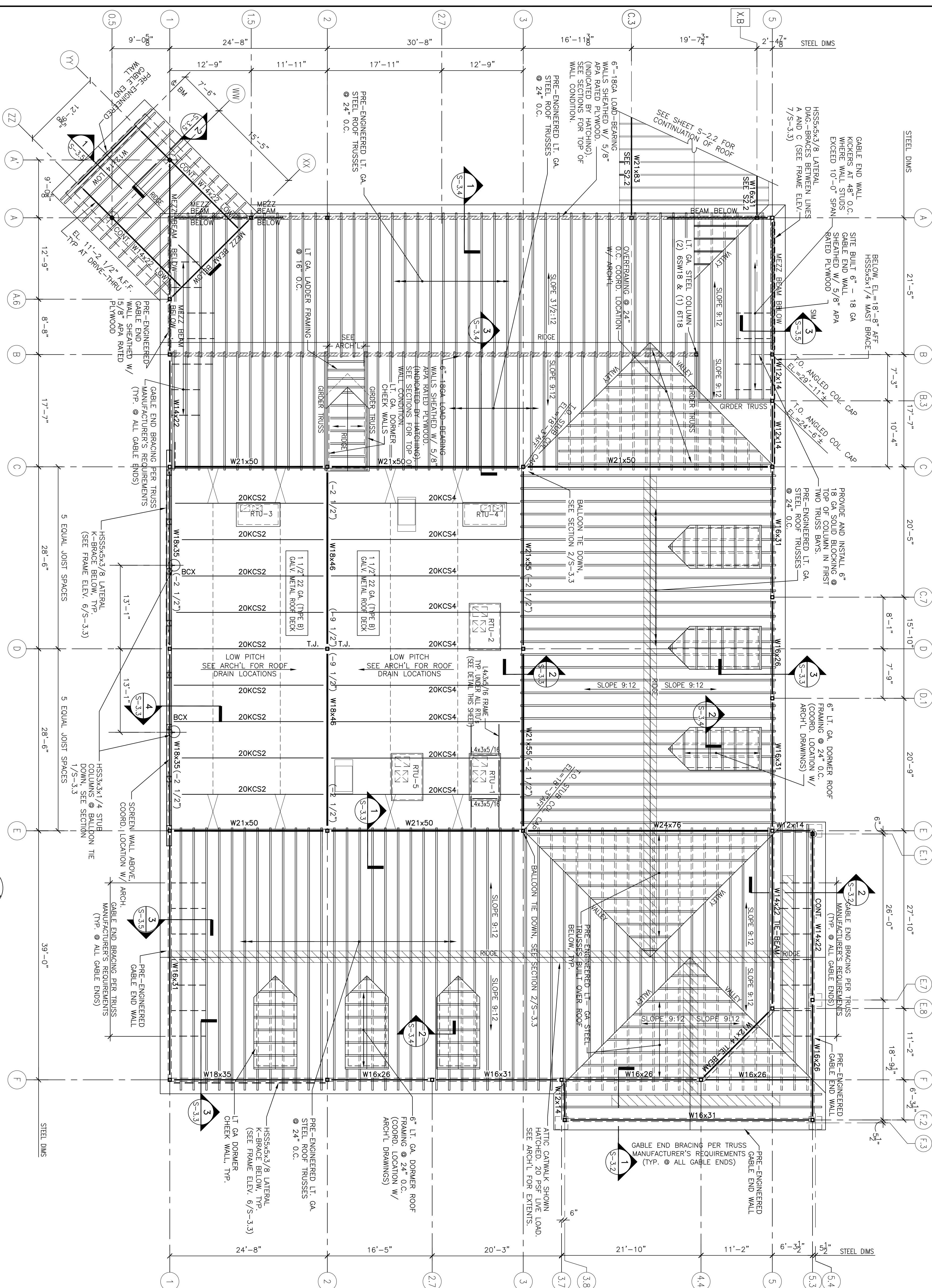
ROOF UP/LIFT PRESSURE (NET) ..... 10 PSF (25 PSF WITHIN 10'-FT OF BLDG PERIMETER)

ROOF WIND PRESSURES: TBD BY TRUSS MANUFACTURER BASED ON ROOF GEOMETRY PER ASCE-7

**CONSULTANT:**

**SKA Architects, Inc.**  
 Architecture + Interiors  
 142 Crescent Street  
 Brockton, MA 02302

**tel : 508.583.5603**  
**fax : 508.584.2914**  
**e-mail : bka@bkaarch.com**



**1 TYPICAL BRIDGING & JOIST REIN. DETAILS**

AT PRIMER DOGS CONNECT DECK TO 12\"/>

3\"/>

3\"/>

WELDING PATTERN 1/4\"/>

NO SCALE

**ROOF FRAMING PLAN**  
 SCALE: 1/8\"/>

**REVISIONS:**

NO.	DATE	DESCRIPTION

**DEVELOPER:**  
**A & D REALTY, LLC**  
 5 MILLITIA DRIVE  
 LEXINGTON, MA 02421

**NEW**  
**STORE NUMBER: 329**  
 NORTHPATE PLAZA  
 91 AUBURN STREET  
 PORTLAND, MAINE

**CHECKED BY:** TG  
**ENGINEERED BY:** MVC  
**DRAWING BY:** AG  
**DATE:** 08/31/2009  
**JOB NUMBER:** 209017

**TITLE:**  
**ROOF FRAMING PLAN**  
**AND GENERAL NOTES**

**SHEET NUMBER:**  
**S-2.1**

**COMMENTS:**  
 ISSUED FOR CONSTRUCTION

Copyright © 2006 by BKA Architects, Inc. The architectural plans, drawings, designs, specifications and other arrangements on this sheet are and shall remain the property of BKA Architects, Inc. No part thereof shall be copied, disclosed to others, or used in connection with any work or project, other than the specified project for which they have been prepared and developed, without the express knowledge and written consent of BKA Architects, Inc.