

- FOUNDATION NOTES - (CONTINUED):**
- ALL SOIL CONTAINING ORGANIC OR UNSATURATED BEARING MATERIAL SHALL BE CLEARED FROM THE BUILDING FOOTPRINT.
 - ALL SUBGRADE FOOTINGS SHALL BE FOUNDED UPON UNSATURATED SOILS TO A DEPTH OF NOT LESS THAN 1800 PSF WITH A SAFE BEARING CAPACITY OF NOT LESS THAN 1800 PSF.
 - COORDINATE SITE SPECIFIC SUBGRADE PREPARATION REQUIREMENTS WITH GEOTECHNICAL REPORT.
 - ROCK SHALL BE EXCAVATED TO A MINIMUM OF 4" BELOW BOTTOM OF FOOTING ELEVATION AND COVERED WITH A LAYER OF COMPACTED GRAVEL.
 - A MODIFIED PROCTOR TEST SHALL BE PERFORMED BY A SOILS TESTING LAB ON EACH TYPE OF SOIL TO BE COMPACTED.
 - SOIL SHALL BE COMPACTED TO NOT LESS THAN 95% OF MAXIMUM DRY DENSITY PER ASTM D1557 IN LIFTS NOT TO EXCEED 6" LOOSE DEPTH.

- FOUNDATION NOTES - (CONTINUED):**
- FIELD DENSITY TESTS SHALL BE PERFORMED BY AN INDEPENDENT SOILS TESTING AGENCY. A COPY OF ALL TEST REPORTS SHALL BE FILED WITH THE ARCHITECT.
 - BRICKLUM SPANNEREDLY AGAINST ALL FOUNDATION WALLS IN CONCRETE SHALL BE 4" MINIMUM OFFSET FROM INTERIOR AND EXTERIOR SURFACES.
 - SEE BRACING AND ELECTRICAL PENETRATIONS FOR UNDER FLOOR SYSTEMS AND SPECIAL GRANULAR FILL MATERIAL REQUIREMENTS.
 - NO FOOTINGS OR SLABS SHALL BE POURED INTO OR AGAINST SUBGRADE CONTAINING FREE WATER OR ICE.
 - ALL SLABS-ON-GRADE SHALL BE PLACED ON A 10 MIL VAPOR BARRIER AND SHALL BE PROTECTED FROM WEAR AND TEAR BY AN ADDITIONAL SUBGRADE PREPARATION REQUIREMENTS WITH GEOTECHNICAL REPORT.

- CONCRETE NOTES - (CONTINUED):**
- ALL CONCRETE WALLS AND CONCRETE EXPOSED TO THE WEATHER SHALL CONTAIN AN APPROVED AIR ENTRAINING ADJUTIVE AND SHALL HAVE A COMPRESSIVE STRENGTH OF NOT LESS THAN 4000 PSI.
 - ALL OTHER CONCRETE SHALL HAVE A COMPRESSIVE STRENGTH OF NOT LESS THAN 3000 PSI AT 28 DAYS AND CONTAIN NO AIR ENTRAINMENT.
 - ALL CONCRETE SHALL CONTAIN AN APPROVED WATER-REDUCING ADJUTIVE.
 - CONCRETE CURING TESTS CHARGERS SHALL BE TAKEN BY AN INDEPENDENT TESTING LAB ON EACH TYPE OF CONCRETE. TESTS SHALL EXCEED 5 CUBIC YARDS, ONE CYLINDER SHALL BE BROKEN AT 7 DAYS, TWO AT 28 DAYS, AND ONE AT 56 DAYS. A COPY OF ALL TEST REPORTS SHALL BE FILED WITH THE ARCHITECT.
 - NO CALCIUM CHLORIDE SHALL BE USED IN ANY CONCRETE.
 - A MIX DESIGN (5 COPIES) SHALL BE SUBMITTED FOR APPROVAL FOR EACH TYPE OF CONCRETE.
 - ALL REINFORCING BARS SHALL BE ASTM A-615 GRADE 60 UNLESS NOTED OTHERWISE.

- CONCRETE NOTES - (CONTINUED):**
- CHANGED SHOP DRAWINGS (5 COPIES) SHOWING REINFORCING DETAILS INCLUDING STEEL STRES, SPACING AND PLACEMENT SHALL BE SUBMITTED BY THE CONTRACTOR FOR APPROVAL PRIOR TO FABRICATION.
 - ALL REINFORCING BAR SPACES SHALL CONFORM TO REQUIREMENTS OF ACI 318, BUT IN NO CASE SHALL THEY BE LESS THAN 2"-0".
 - DOESLS SHALL MATCH SIZE AND SPACING OF MAIN REINFORCING.
 - CONSTRUCTION JOINTS IN ALL WALLS SHALL BE NOT REINFORCED APART THAN 60 FEET IN ANY DIRECTION. SEE DETAIL ON DWG 5/3/1 FOR CONSTRUCTION AND/OR SHRINKAGE JOINTS. SEE DETAIL ON DWG 5/3/1 ALL WELDED WIRE FABRIC SHALL CONFORM TO ASTM A-185, F_y=60 KSI PANELS AT SIDES AND ENDS AND BE SECURELY WIRED TOGETHER. SEE ARCHITECTURAL DRAWINGS FOR TYPE AND LOCATION OF ALL FLOOR FINISHES, FLOOR DEPRESSIONS AND WITH ARCHITECT, PLUMBING, MECHANICAL, ELECTRICAL CONTRACTORS AND LOCAL AGENCIES.

- FOUNDATION PLAN NOTES**
- TOP OF CONCRETE SLAB CALLED ELEV. 0'-0"
 - X-X' - INDICATES TOP OF WALL ELEV.
 - X-X' - INDICATES BOTTOM OF FOOTING ELEV. [MIN. 5'-0" BELOW GRADE]
 - (S1) - PROVIDE FOOTING STEPS AS NOTED
 - (S2) - INDICATES SHRINKAGE CONTROL JOINT (SEE DETAIL 9/5-3.1)
 - (F) - INDICATES FOOTING MARK. SEE SCHEDULE.
 - REFER TO ARCHITECTURAL DRAWINGS FOR DIMENSIONS OF ALL OPENINGS AND LOCATION OF INTERIOR WALLS NOT SHOWN ON THIS DRAWING.
- DESIGN LOADS (EXCEPT AS NOTED)**
 CODE - (ME STATE BUILDING CODE, 2003 INTERNATIONAL BUILDING CODE) (PORTLAND, ME)
- SLAB LOADS -:**
 RETAIL AREAS (FIRST FLOOR) 100 PSF
 STORAGE AREAS (LIGHT) 125 PSF
 CONCENTRATED LOAD 1000 LB
 MIN. ROOF LIVE LOAD - (ME STATE BLDG CODE) 20 PSF
 GROUND SNOW (PD) - 50 PSF
 FROST DEPTH - (ME STATE BUILDING CODE) 5'-0"
 SOIL BEARING CAPACITY 1800 PSF

BKA Architects, Inc.
 Architecture + Interiors

142 Crescent Street
 Brockton, MA 02302

tel : 508.583.5603
 fax : 508.584.2914
 e-mail : bka@bkaarch.com

CONSULTANT:

- FOUNDATION NOTES - (CONTINUED):**
- ALL CONCRETE SHALL HAVE A COMPRESSIVE STRENGTH OF NOT LESS THAN 4000 PSI.
 - ALL OTHER CONCRETE SHALL HAVE A COMPRESSIVE STRENGTH OF NOT LESS THAN 3000 PSI AT 28 DAYS AND CONTAIN NO AIR ENTRAINMENT.
 - ALL CONCRETE SHALL CONTAIN AN APPROVED WATER-REDUCING ADJUTIVE.
 - CONCRETE CURING TESTS CHARGERS SHALL BE TAKEN BY AN INDEPENDENT TESTING LAB ON EACH TYPE OF CONCRETE. TESTS SHALL EXCEED 5 CUBIC YARDS, ONE CYLINDER SHALL BE BROKEN AT 7 DAYS, TWO AT 28 DAYS, AND ONE AT 56 DAYS. A COPY OF ALL TEST REPORTS SHALL BE FILED WITH THE ARCHITECT.
 - NO CALCIUM CHLORIDE SHALL BE USED IN ANY CONCRETE.
 - A MIX DESIGN (5 COPIES) SHALL BE SUBMITTED FOR APPROVAL FOR EACH TYPE OF CONCRETE.
 - ALL REINFORCING BARS SHALL BE ASTM A-615 GRADE 60 UNLESS NOTED OTHERWISE.

- FOUNDATION NOTES - (CONTINUED):**
- FIELD DENSITY TESTS SHALL BE PERFORMED BY AN INDEPENDENT SOILS TESTING AGENCY. A COPY OF ALL TEST REPORTS SHALL BE FILED WITH THE ARCHITECT.
 - BRICKLUM SPANNEREDLY AGAINST ALL FOUNDATION WALLS IN CONCRETE SHALL BE 4" MINIMUM OFFSET FROM INTERIOR AND EXTERIOR SURFACES.
 - SEE BRACING AND ELECTRICAL PENETRATIONS FOR UNDER FLOOR SYSTEMS AND SPECIAL GRANULAR FILL MATERIAL REQUIREMENTS.
 - NO FOOTINGS OR SLABS SHALL BE POURED INTO OR AGAINST SUBGRADE CONTAINING FREE WATER OR ICE.
 - ALL SLABS-ON-GRADE SHALL BE PLACED ON A 10 MIL VAPOR BARRIER AND SHALL BE PROTECTED FROM WEAR AND TEAR BY AN ADDITIONAL SUBGRADE PREPARATION REQUIREMENTS WITH GEOTECHNICAL REPORT.

- CONCRETE NOTES - (CONTINUED):**
- ALL CONCRETE WALLS AND CONCRETE EXPOSED TO THE WEATHER SHALL CONTAIN AN APPROVED AIR ENTRAINING ADJUTIVE AND SHALL HAVE A COMPRESSIVE STRENGTH OF NOT LESS THAN 4000 PSI.
 - ALL OTHER CONCRETE SHALL HAVE A COMPRESSIVE STRENGTH OF NOT LESS THAN 3000 PSI AT 28 DAYS AND CONTAIN NO AIR ENTRAINMENT.
 - ALL CONCRETE SHALL CONTAIN AN APPROVED WATER-REDUCING ADJUTIVE.
 - CONCRETE CURING TESTS CHARGERS SHALL BE TAKEN BY AN INDEPENDENT TESTING LAB ON EACH TYPE OF CONCRETE. TESTS SHALL EXCEED 5 CUBIC YARDS, ONE CYLINDER SHALL BE BROKEN AT 7 DAYS, TWO AT 28 DAYS, AND ONE AT 56 DAYS. A COPY OF ALL TEST REPORTS SHALL BE FILED WITH THE ARCHITECT.
 - NO CALCIUM CHLORIDE SHALL BE USED IN ANY CONCRETE.
 - A MIX DESIGN (5 COPIES) SHALL BE SUBMITTED FOR APPROVAL FOR EACH TYPE OF CONCRETE.
 - ALL REINFORCING BARS SHALL BE ASTM A-615 GRADE 60 UNLESS NOTED OTHERWISE.

- CONCRETE NOTES - (CONTINUED):**
- CHANGED SHOP DRAWINGS (5 COPIES) SHOWING REINFORCING DETAILS INCLUDING STEEL STRES, SPACING AND PLACEMENT SHALL BE SUBMITTED BY THE CONTRACTOR FOR APPROVAL PRIOR TO FABRICATION.
 - ALL REINFORCING BAR SPACES SHALL CONFORM TO REQUIREMENTS OF ACI 318, BUT IN NO CASE SHALL THEY BE LESS THAN 2"-0".
 - DOESLS SHALL MATCH SIZE AND SPACING OF MAIN REINFORCING.
 - CONSTRUCTION JOINTS IN ALL WALLS SHALL BE NOT REINFORCED APART THAN 60 FEET IN ANY DIRECTION. SEE DETAIL ON DWG 5/3/1 FOR CONSTRUCTION AND/OR SHRINKAGE JOINTS. SEE DETAIL ON DWG 5/3/1 ALL WELDED WIRE FABRIC SHALL CONFORM TO ASTM A-185, F_y=60 KSI PANELS AT SIDES AND ENDS AND BE SECURELY WIRED TOGETHER. SEE ARCHITECTURAL DRAWINGS FOR TYPE AND LOCATION OF ALL FLOOR FINISHES, FLOOR DEPRESSIONS AND WITH ARCHITECT, PLUMBING, MECHANICAL, ELECTRICAL CONTRACTORS AND LOCAL AGENCIES.

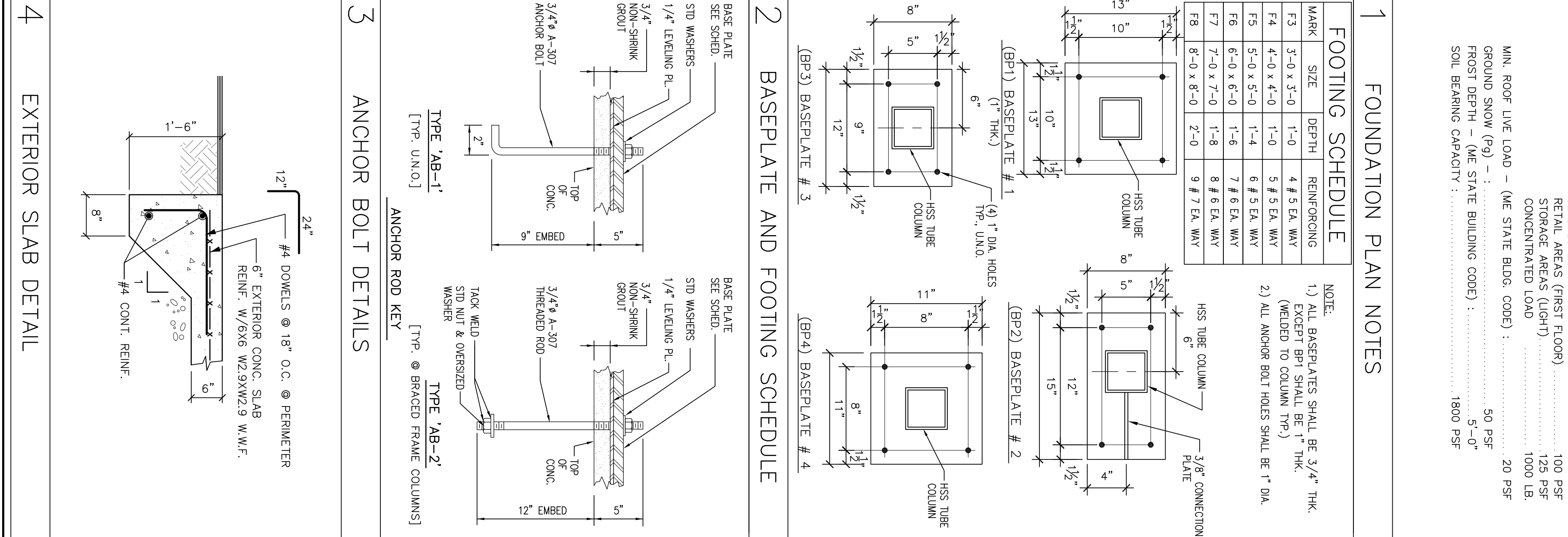
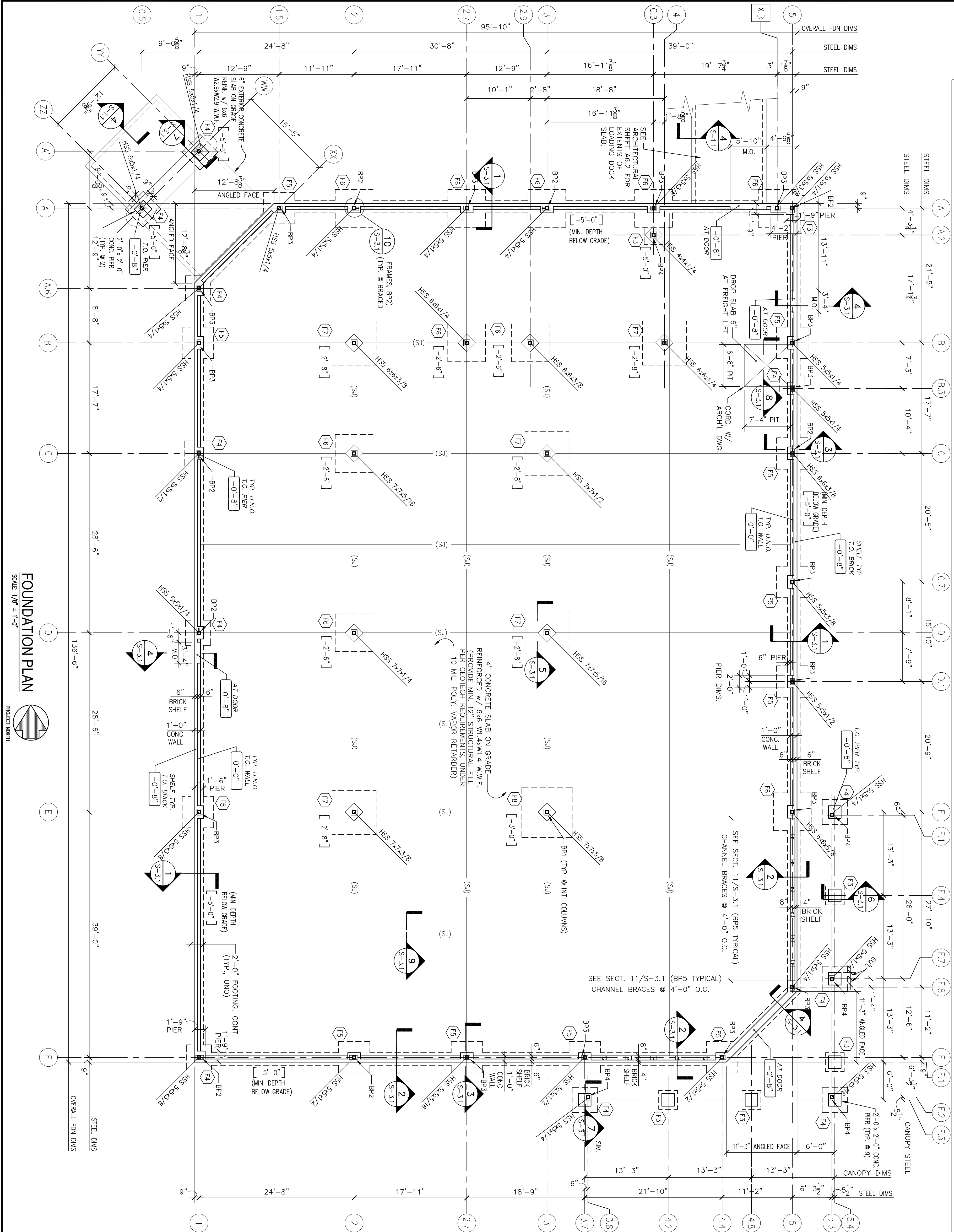
- FOUNDATION PLAN NOTES**
- TOP OF CONCRETE SLAB CALLED ELEV. 0'-0"
 - X-X' - INDICATES TOP OF WALL ELEV.
 - X-X' - INDICATES BOTTOM OF FOOTING ELEV. [MIN. 5'-0" BELOW GRADE]
 - (S1) - PROVIDE FOOTING STEPS AS NOTED
 - (S2) - INDICATES SHRINKAGE CONTROL JOINT (SEE DETAIL 9/5-3.1)
 - (F) - INDICATES FOOTING MARK. SEE SCHEDULE.
 - REFER TO ARCHITECTURAL DRAWINGS FOR DIMENSIONS OF ALL OPENINGS AND LOCATION OF INTERIOR WALLS NOT SHOWN ON THIS DRAWING.
- DESIGN LOADS (EXCEPT AS NOTED)**
 CODE - (ME STATE BUILDING CODE, 2003 INTERNATIONAL BUILDING CODE) (PORTLAND, ME)
- SLAB LOADS -:**
 RETAIL AREAS (FIRST FLOOR) 100 PSF
 STORAGE AREAS (LIGHT) 125 PSF
 CONCENTRATED LOAD 1000 LB
 MIN. ROOF LIVE LOAD - (ME STATE BLDG CODE) 20 PSF
 GROUND SNOW (PD) - 50 PSF
 FROST DEPTH - (ME STATE BUILDING CODE) 5'-0"
 SOIL BEARING CAPACITY 1800 PSF

BKA Architects, Inc.
 Architecture + Interiors

142 Crescent Street
 Brockton, MA 02302

tel : 508.583.5603
 fax : 508.584.2914
 e-mail : bka@bkaarch.com

CONSULTANT:



FOUNDATION PLAN
 AND SCHEDULES

SHEET NUMBER: S-1.1

COMMENTS:
 ISSUED FOR CONSTRUCTION

Copyright © 2006 by BKA Architects, Inc. The architectural plans, drawings, designs, specifications and other arrangements on this sheet are and shall remain the property of BKA Architects, Inc. No part thereof shall be copied, disclosed to others, or used in connection with any work or project, other than the specified project for which they have been prepared and developed, without the express knowledge and written consent of BKA Architects, Inc.

CVS/
 pharmacy

NEW
 STORE NUMBER 329
 NORTHGATE PLAZA
 91 AUBURN STREET
 PORTLAND, MAINE

DEVELOPER:
 A & D REALTY, LLC
 5 MILITIA DRIVE
 LEXINGTON, MA 02421

REVISIONS:

CHECKED BY: TG
 ENGINEERED BY: MYC
 DRAWING BY: AG
 DATE: 08/31/2009
 JOB NUMBER: 209017