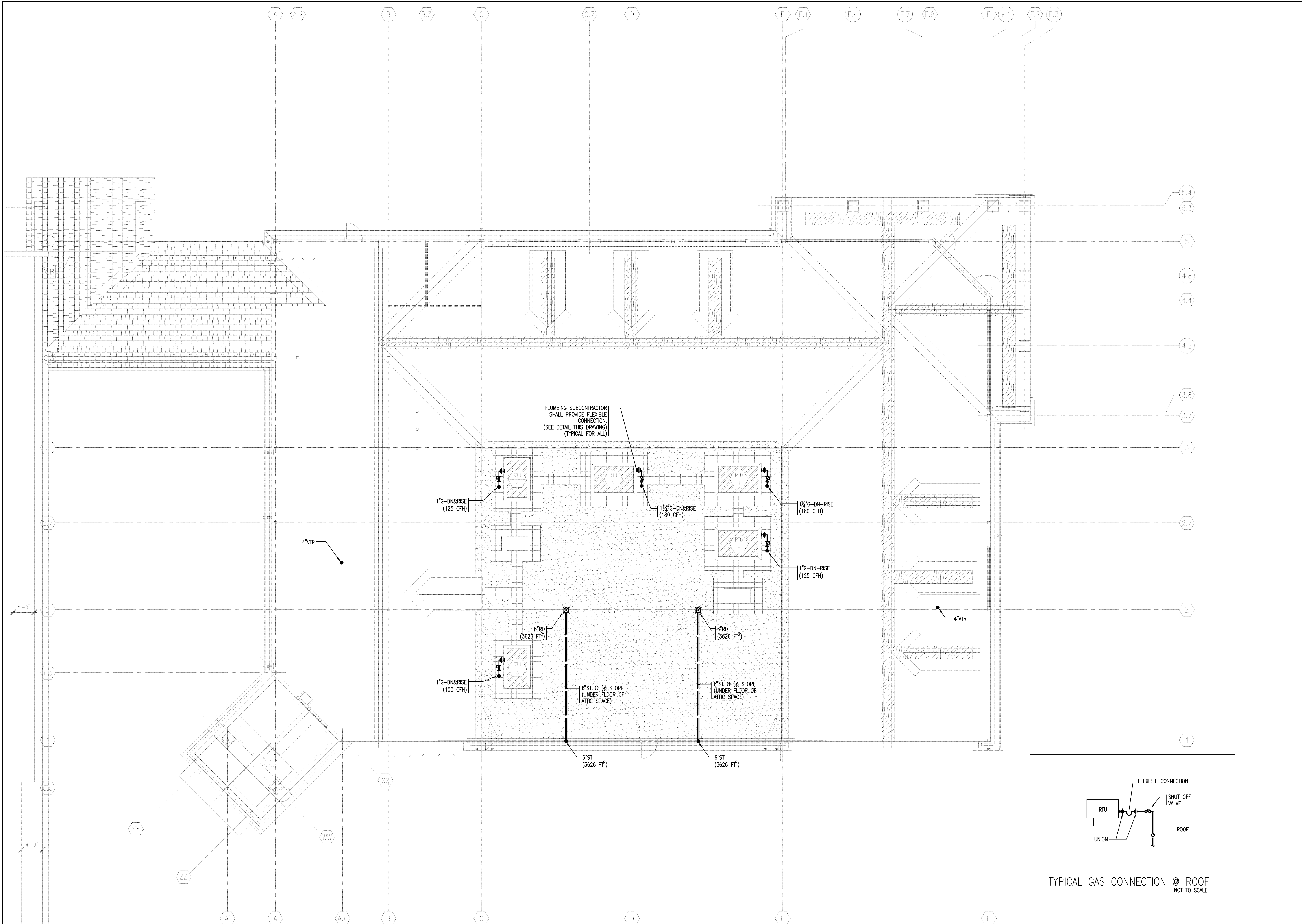
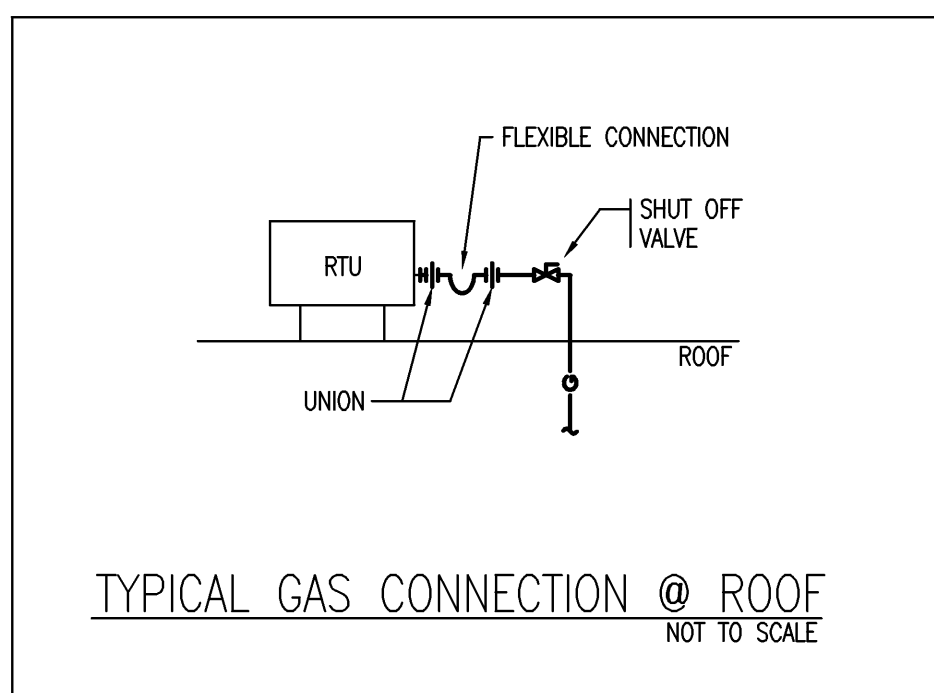


J:\2009\80766-00\0_Drawings\Plans-AutoCAD\Plumbing_FP\80766-00_P-1.2.dwg Sep 01, 2009 - 3:42 pm RMP



1 PLUMBING ROOF PLAN
 P-1.2 SCALE: 1/8"=1'-0"



bka
 BKA Architects, Inc.
 Architecture + Interiors
 142 Crescent Street
 Brockton, MA 02302
 tel : 508.583.5603
 fax : 508.584.2914
 e-mail : bka@bkaarch.com

CONSULTANT:
RWS R. W. Sullivan Engineering
 HVAC, Electrical, Plumbing, Fire Protection, Code
 The Sprague Center, 529 Main St., Suite 203
 Boston, Massachusetts 02129-1101
 Phone: (617) 533-9227 Fax: (617) 533-8016
 www.rwsinc.com
 RWS, ACS # 80798.00

SEAL:

CVS/
 pharmacy
 NEW
 STORE NUMBER: 329
 NORTHGATE PLAZA
 91 AUBURN STREET
 PORTLAND, MAINE

DEVELOPER:
 A & D REALTY, LLC
 5 MILITIA DRIVE
 LEXINGTON, MA 02421

REVISIONS:

DRAWING BY: RMP
 DATE: 8/31/09
 JOB NUMBER: 209017
 TITLE:
 PLUMBING
 ATTIC PLAN
 SHEET NUMBER:
 P-1.2
 COMMENTS:
 ISSUED FOR CONSTRUCTION

Copyright © 2009 by BKA Architects, Inc. The construction plan, schedule, pricing, specifications and other arrangements in this sheet are not valid without the approval of BKA Architects, Inc. No part thereof shall be copied, disseminated to others, or used in connection with any work or project, other than the specific project for which they have been prepared and developed, without the express knowledge and written consent of BKA Architects, Inc.