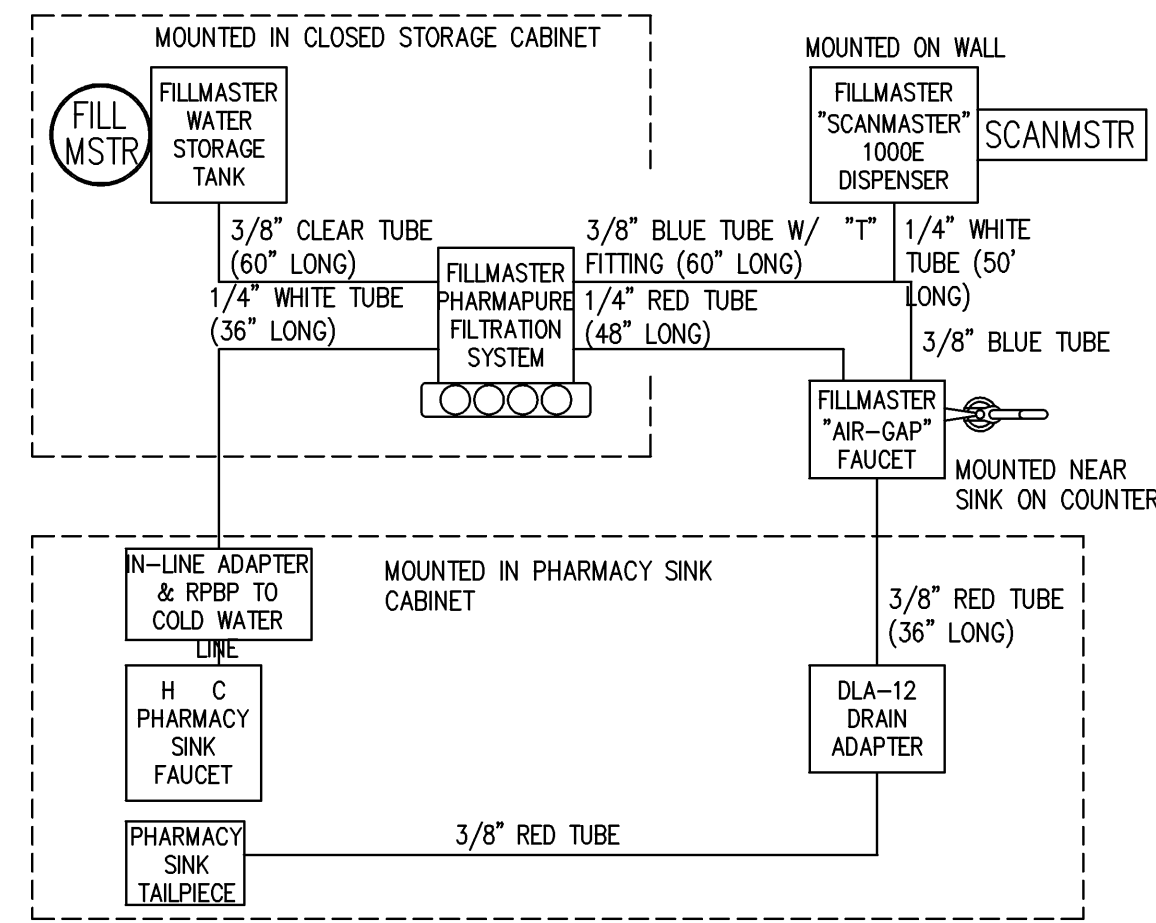


NOTES:
SEAL ASSEMBLY SHALL BE MODULAR MECHANICAL TYPE CONSISTING OF INTERLOCKING RUBBER LINKS SHAPED TO CONTINUOUSLY FILL IN THE ANNULAR SPACE BETWEEN PIPE & WALL OPENING. PRESSURE PLATES SHALL BE DELRIN PLASTIC. BOLTS & NUTS SHALL BE 18.8 STAINLESS STEEL. SEALING ELEMENTS SHALL BE EPDM RUBBER.

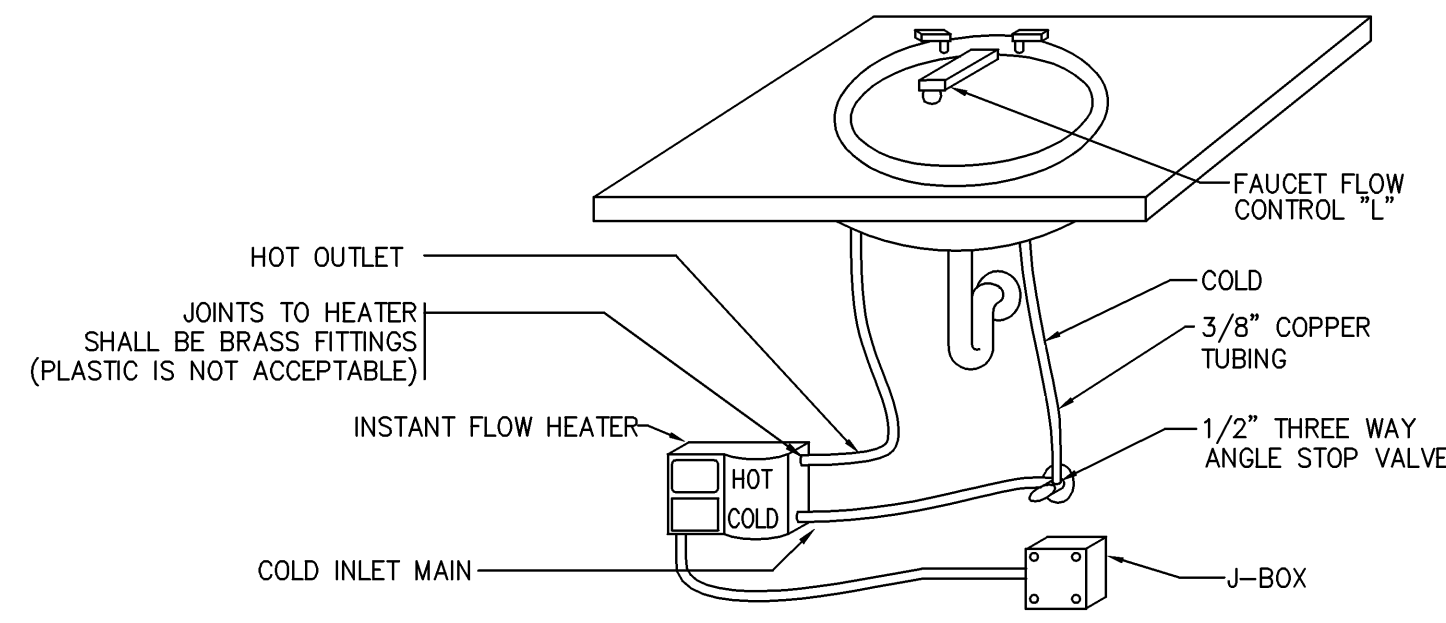
1 WATER TIGHT PENETRATION
P-0.2 SCALE: NOT TO SCALE



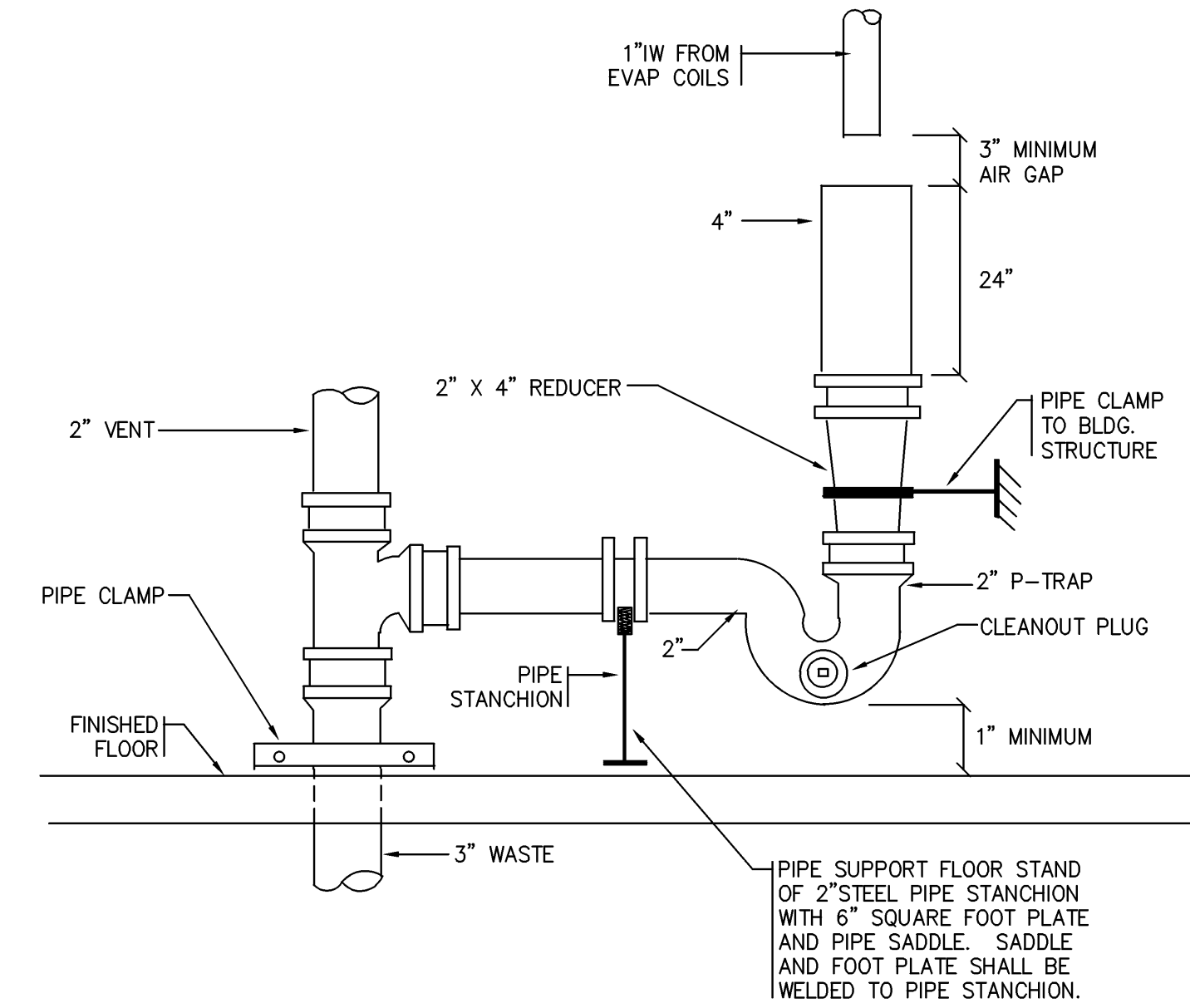
DETAIL NOTE:
ALL REQUIRED FILLMASTER EQUIPMENT, CONNECTORS AND TUBING SUPPLIED BY INNOVATIVE MEDICAL SERVICES. THIS EQUIPMENT SHALL BE PURCHASED AND INSTALLED BY GENERAL CONTRACTOR.

ESTIMATED MAXIMUM DISCHARGE RATE FOR THE FILM PROCESSOR IS 25 GAL/DAY AT A PH FACTOR OF 7.0-8.0.

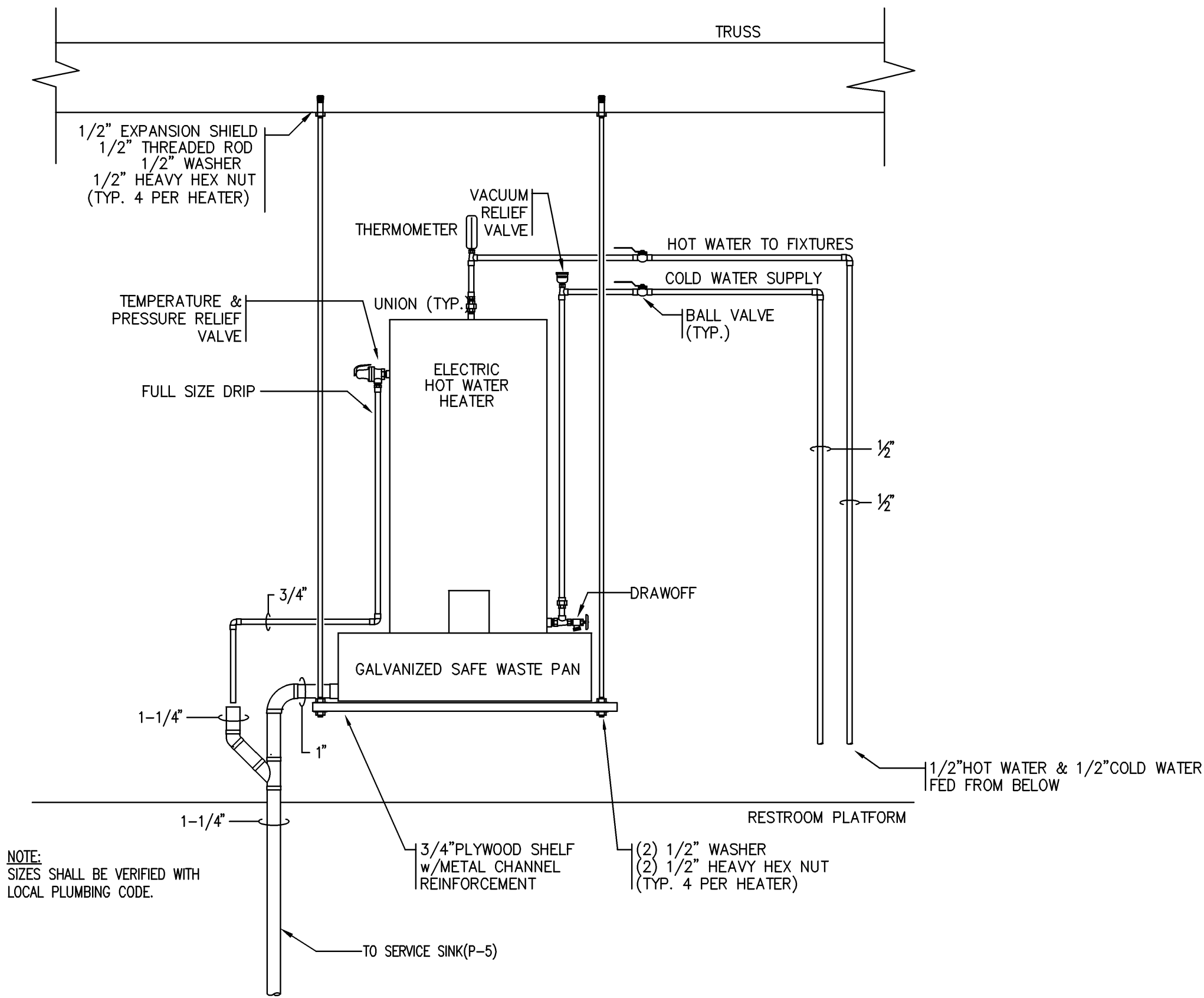
2 WATER PURIFICATION DETAIL
P-0.2 SCALE: NOT TO SCALE



3 INSTANTANEOUS WATER HEATER
P-0.2 SCALE: NOT TO SCALE

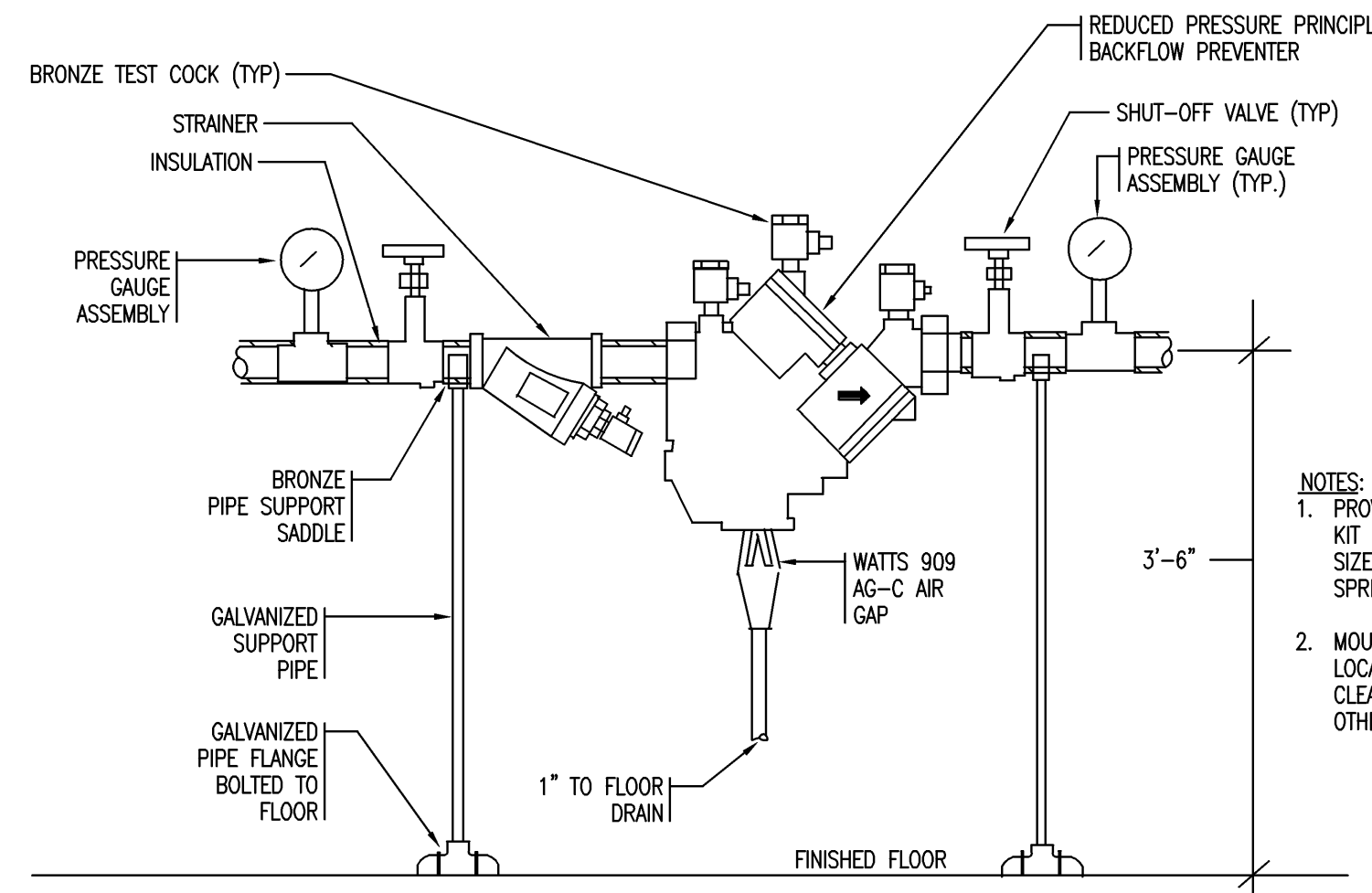


4 OPEN END DRAIN (OED)
P-0.2 SCALE: NOT TO SCALE



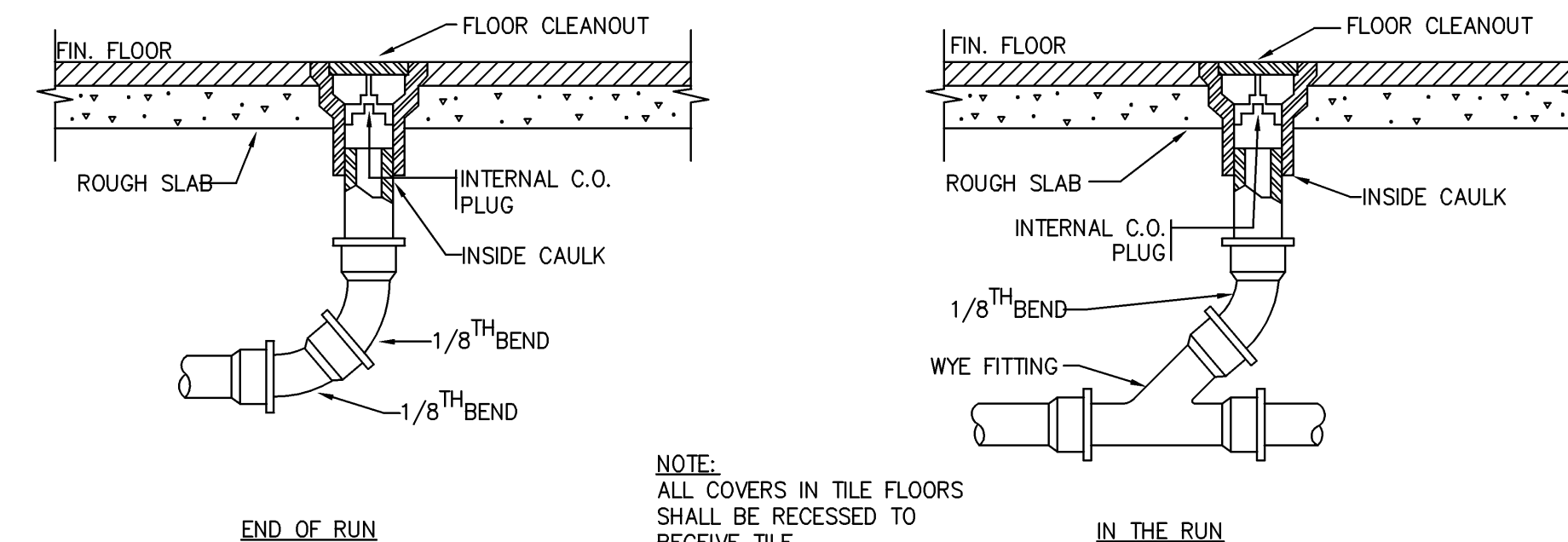
NOTE:
SIZES SHALL BE VERIFIED WITH LOCAL PLUMBING CODE.

5 DETAIL OF SUSPENDED ELECTRIC WATER HEATER
P-0.2 SCALE: NOT TO SCALE



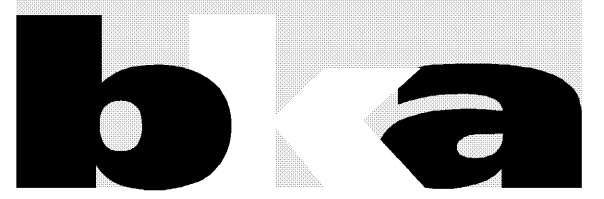
NOTES:
1. PROVIDE SPARE PARTS KIT FOR EACH DIFFERENT SIZE UNIT INCLUDING GASKETS, SPRINGS, & MAIN ASSEMBLIES.
2. MOUNT IN ACCORDANCE WITH LOCAL REGULATIONS WITH CLEARANCE FROM WALLS AND OTHER OBSTRUCTIONS.

6 DETAIL OF BACKFLOW PREVENTER
P-0.2 SCALE: NOT TO SCALE



NOTE:
ALL COVERS IN TILE FLOORS SHALL BE RECESSED TO RECEIVE TILE.

7 DETAIL OF FLUSH FLOOR CLEANOUTS
P-0.2 SCALE: NOT TO SCALE



BKA Architects, Inc.
Architecture + Interiors

142 Crescent Street
Brockton, MA 02302

tel : 508.583.5603
fax : 508.584.2914
e-mail : bka@bkaarch.com

CONSULTANT:



R.W. Sullivan Engineering
H/V/C Electrical Plumbing Fire Protection Code
The Sprague Center, 529 Main St., Suite 203
Brockton, Massachusetts 01924-1103
Phone: (617) 523-9227 Fax: (617) 523-8016
www.rwsinc.com
RWS-ISO 9001:2000

SEAL:



NEW

STORE NUMBER: 329

NORTHGATE PLAZA
91 AUBURN STREET
PORTLAND, MAINE

DEVELOPER:

A & D REALTY, LLC
5 MILITIA DRIVE
LEXINGTON, MA 02421

REVISIONS:

DRAWING BY: RMP

DATE: 8/31/09

JOB NUMBER: 209017

TITLE:

PLUMBING
DETAILS

SHEET NUMBER:

P-0.2

COMMENTS:
ISSUED FOR CONSTRUCTION