

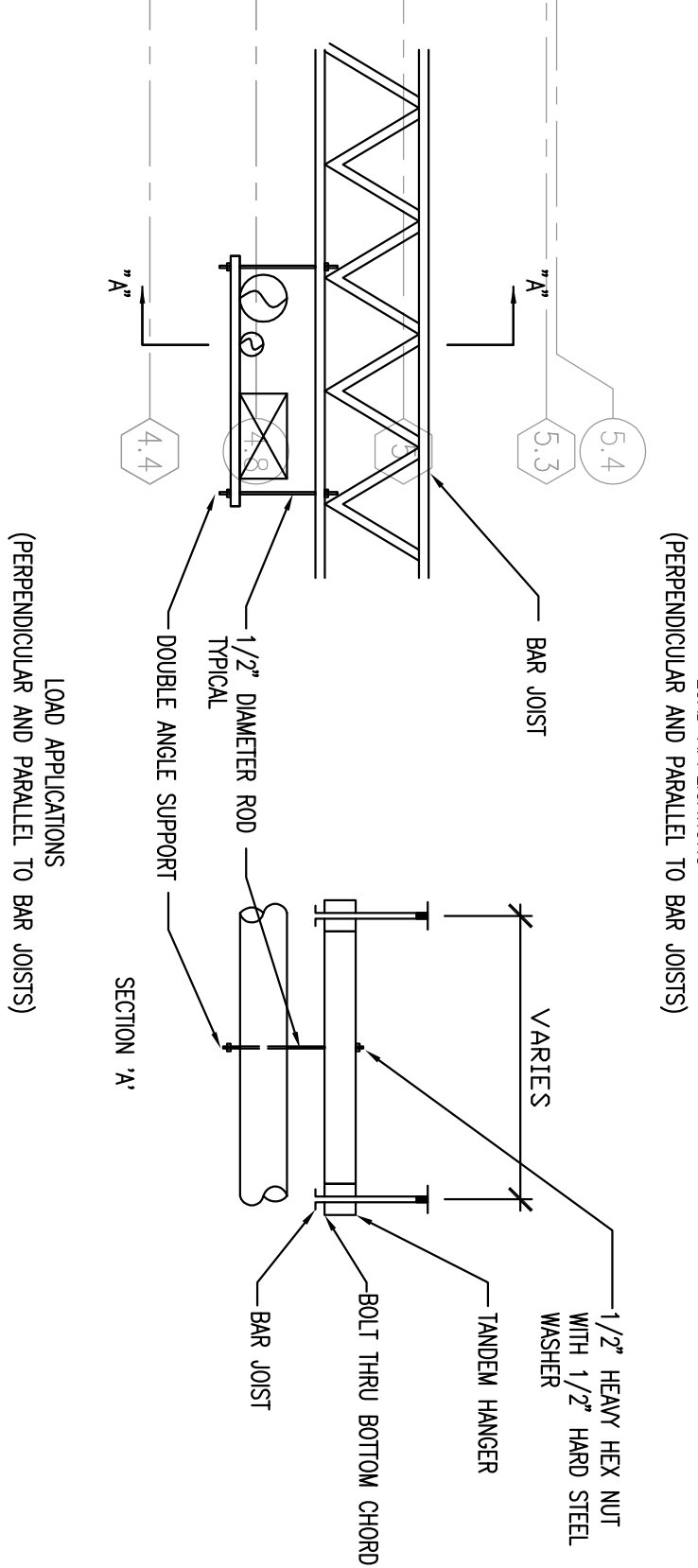
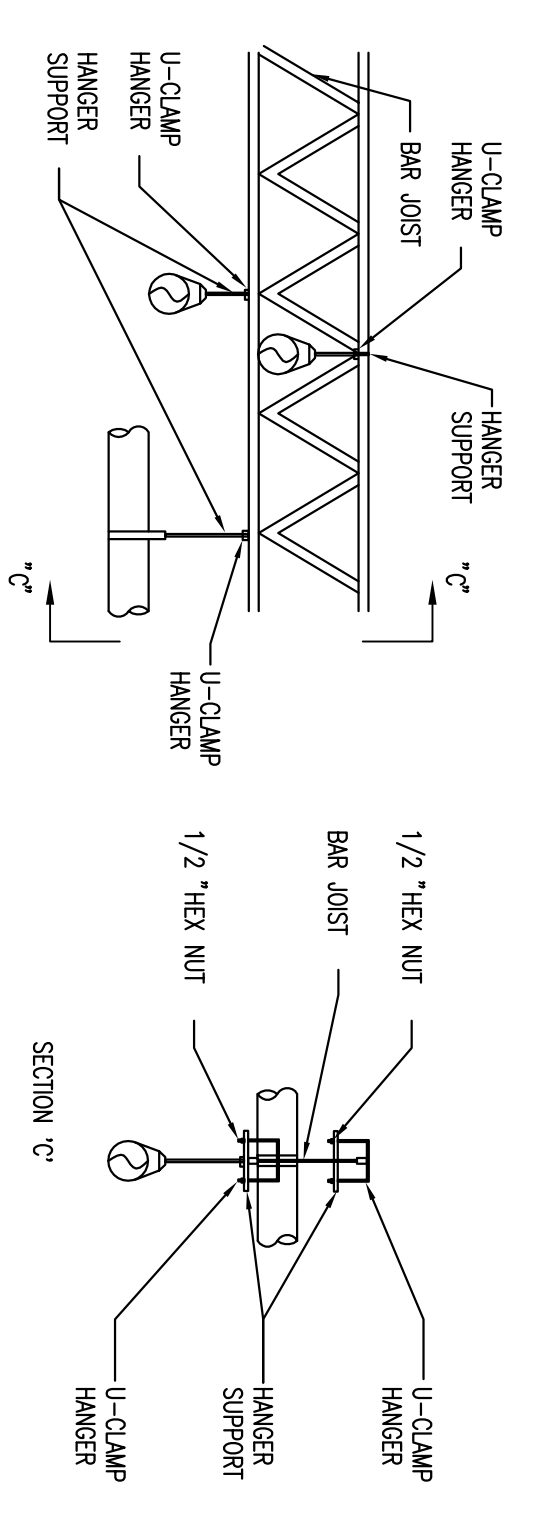
DRAWING NOTES:

1. PROVIDE FLEXIBLE DUCT CONNECTION BETWEEN AIR CONDITIONING UNIT AND DUCTWORK.
2. WHERE SINGLE SUPPLY DUCTS SPLIT INTO TWO DUCTS MAINTAIN EACH BRANCH DUCT WITH EQUAL LENGTHS AND PROVIDE SPLITTER FITTING AND PROVIDE SINGLE TRANSITION ON UPSHOWN SIDE OF SPLITTER FITTING.
3. FOR INSTALLATION OF ROOFTOP UNITS REFER TO DETAIL 7/M-0.1.
4. TURN SUPPLY AND RETURN DUCTS UP AT EACH A/C UNIT. INSTALL 90° ELBOW WITH TURNING VANES IN SUPPLY DUCTS AND PROVIDE TRANSITION TO CONNECT DUCTS TO UNITS, UNLESS OTHERWISE NOTED.

NOTES BY SYMBOL:

- ① CONDENSATE PIPING CONNECTION DETAIL 2/M-0.1
- ② EXHAUST FAN ROOF CAP DETAIL 7/M-0.1
- ③ VENT STACK DETAIL 2/A-2.1
- ④ ROOF PENETRATION DETAIL 5/A-2.1

1 HVAC ROOF PLAN
M-1.2 SCALE: 1/8"=1'-0"



1 HANGER DETAILS
M-1.2 SCALE: NOT TO SCALE

HANGER DETAIL NOTES:

- THE FOLLOWING GUIDELINES SHALL BE FOLLOWED WHEN ATTACHING TEAS TO BAR JOISTS:
1. DO NOT HANG ANY TYPE OF CRANE OR HOIST FROM BAR JOISTS.
 2. OBTAIN CONCENTRATED LOADS FROM CERTIFIED EQUIPMENT DRAWINGS AND MANUFACTURER'S DATA.
 3. DO NOT HANG ANY LOAD OVER 50 POUNDS FROM JOIST BRACES.
 4. DO NOT HANG ANY LOADS OVER 50 POUNDS FROM THE TOP OR BOTTOM CHORD OF THE BAR JOIST BETWEEN JOISTS. ALWAYS HANG OVER A DIAGONAL-TO-CHORD JOINT.
 5. DO NOT DRILL OR WELD ANY PART OF THE BAR JOIST.
 6. DO NOT HANG ANY LOAD OVER 50 POUNDS FROM ONE SIDE OF THE BAR JOIST CHORD. THIS ECCENTRICITY CAN SERIOUSLY IMPAIR THE MEMBER'S STRUCTURAL PERFORMANCE.
 7. DO NOT HANG LOAD GREATER THAN 1000 POUNDS FROM ONLY ONE JOIST BECAUSE OF HANGER DEFLECTION, HANG BETWEEN TWO JOISTS TO DISTRIBUTE THE LOAD AND ONE A SPRINGER, MORE STABLE HANGING SYSTEM.
 8. DO NOT HANG ANY LOAD OVER 10 POUNDS/LINEAR FOOT CONCENTRICALLY ALONG ONE BAR JOIST UNLESS THAT JOIST IS CAPABLE OF CARRYING THE APPLIED LOAD IN ADDITION TO THE REQUIRED BUILDING LIVE LOAD.
 9. CORRODATE HANGER LOADS WITH THE GENERAL CONTRACTOR CONSTRUCTION MANAGEMENT.
 10. LOCATION OF HANGER LOADS SHALL BE APPROVED BY GENERAL CONTRACTOR.

<p>REVISIONS:</p> <table border="1" style="width: 100%; border-collapse: collapse;"> <tr><td> </td><td> </td><td> </td></tr> <tr><td> </td><td> </td><td> </td></tr> <tr><td> </td><td> </td><td> </td></tr> <tr><td> </td><td> </td><td> </td></tr> </table>													<p>DEVELOPER:</p> <p>A & D REALTY, LLC 5 MULTIA DRIVE LEXINGTON, MA 02421</p>	<p>NEW STORE NUMBER: 329</p> <p>NORTHGATE PLAZA 91 AUBURN STREET PORTLAND, MAINE</p>	<p>SEAL:</p> <div style="border: 1px solid black; padding: 5px;"> <p>R. W. Sullivan Engineering Company 1000 North Main Street Salem, MA 01970 Tel: 978.744.1100 Fax: 978.744.1101 www.rws-engineering.com</p> </div>
<p>COMMENTS:</p> <p>ISSUED FOR CONSTRUCTION</p>	<p>SHEET NUMBER:</p> <p>M-1.2</p>	<p>TITLE:</p> <p>HVAC ROOF PLAN</p>	<p>DATE:</p> <p>8/31/09</p>												
<p>DRAWING BY:</p> <p>JHP</p>	<p>JOB NUMBER:</p> <p>209017</p>	<p>CONSULTANT:</p> <p>BKA Architects, Inc. Architecture + Interiors 142 Crescent Street Brockton, MA 02302</p> <p>tel : 508.683.6603 fax : 508.684.2914 e-mail : bka@bkaarch.com</p>													