

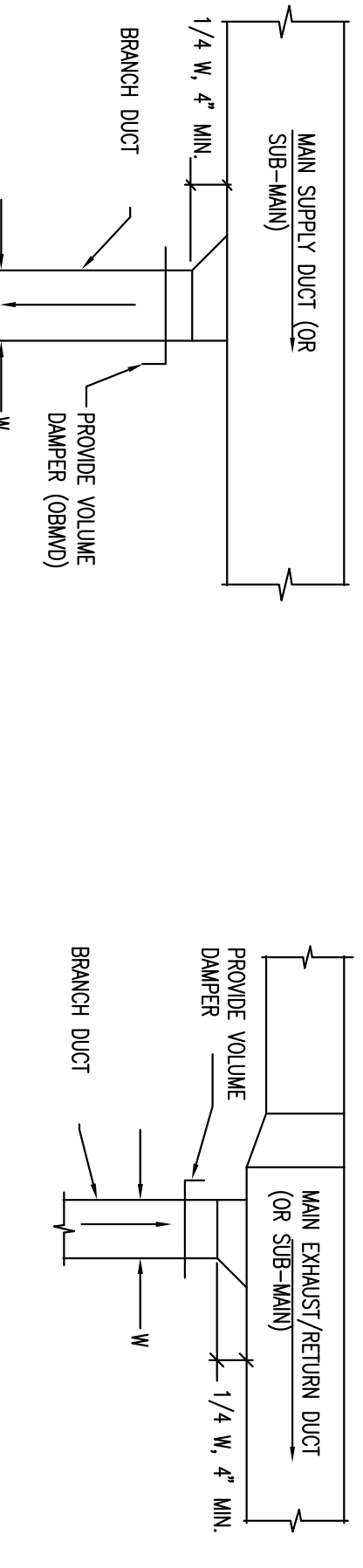
### FANS

MARK	SERVICE	LOCATION	MANUFACTURER	MODEL NO.	CFM	ESP. S.P.	ROOF TYPE	ELECTRICAL DATA	REMARKS
EF-1	EXHAUST	RESTROOMS	WATKINS	RESTROOMS	120	0.1	DIRECT	120/1/60	0.6
EF-2	EXHAUST	RESTROOMS	WATKINS	RESTROOMS	120	0.1	DIRECT	120/1/60	0.6

① SWITCH AS INDICATED ON DRAWING E-1.1. ② PROVIDE BACKDRAFT DAMPER. ③ FINISHED AND INSTALLED BY MECHANICAL CONTRACTOR, WHEED BY ELECTRICAL CONTRACTOR.

### MINIMUM OUTSIDE AIR REQUIREMENTS

AREA	SQUARE FT. +/-	MINIMUM CFM REQUIRED	APPLICABLE UNIT
RETAIL AREA	9100	2720 CFM	RTU-1, 2, & 5
PHARMACY	900	270 CFM	RTU-3
OFFICE AREA	740	425 CFM	RTU-4
MEZZANINE	2000	100 CFM	RTU-4
		3105 CFM	
		3300 CFM	



**142 Creacent Street**  
 Brockton, MA 02302

**101.508.583.5003**  
 fax: 508.594.2914  
 e-mail: bka@bkaarch.com

**BKA Architects, Inc.**  
 Architecture + Interiors

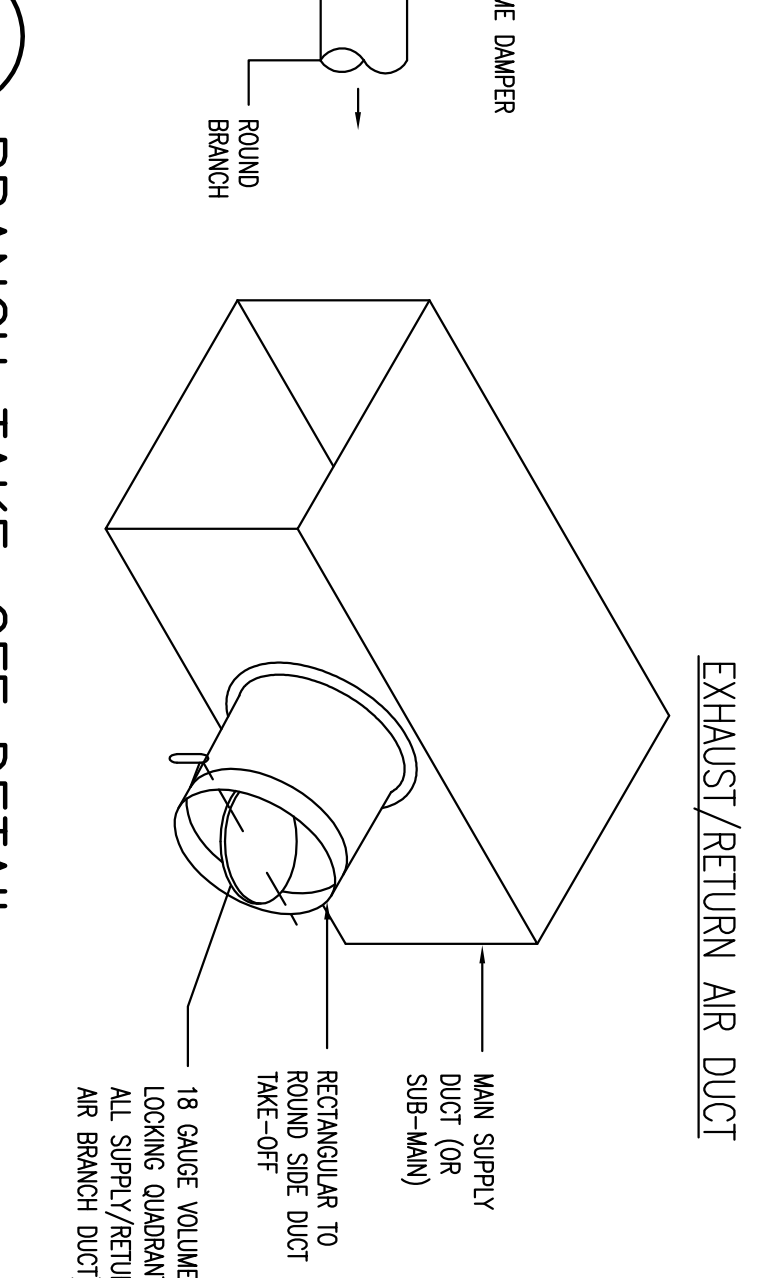
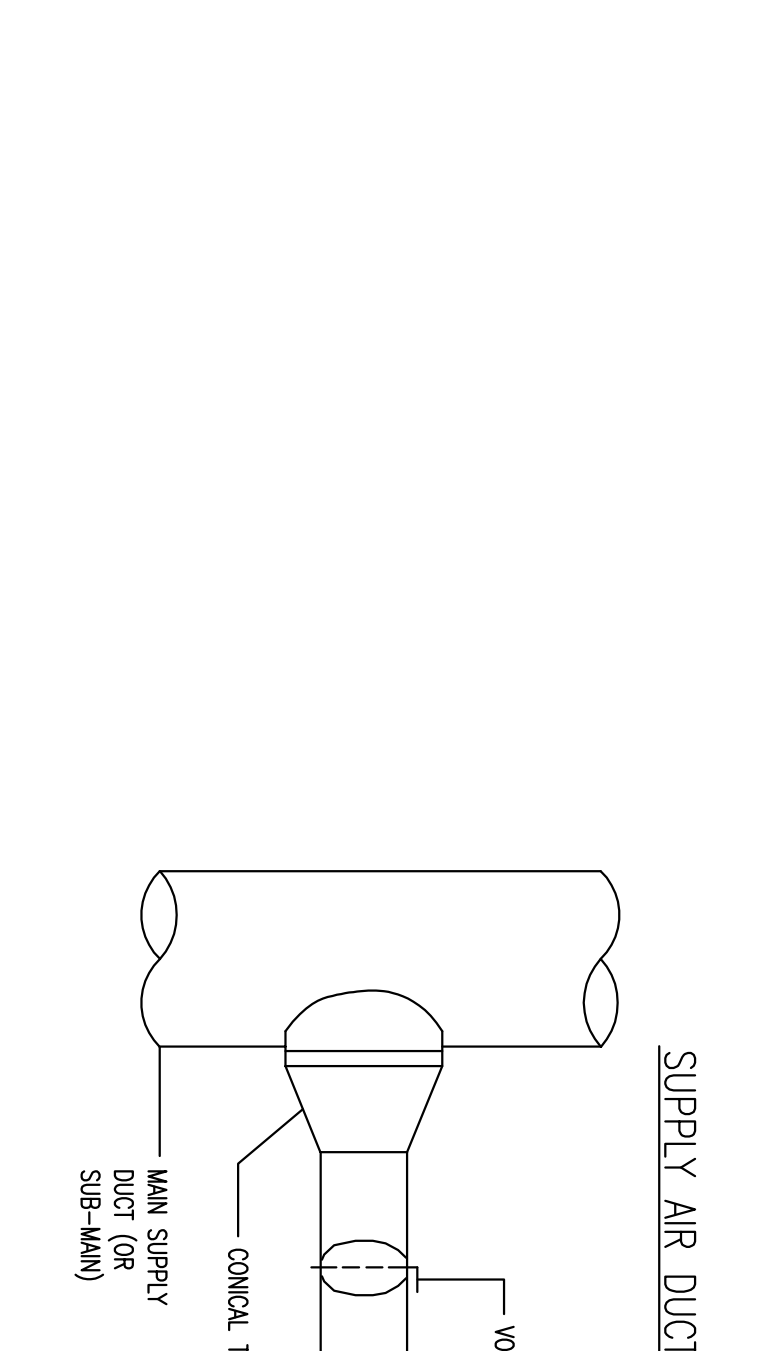
### PACKAGED ROOFTOP UNIT (GAS)

MARK	SERVICE	CFM	ESP. S.P.	MAX. NET COOLING CAPACITY (GAS)	HEATING CAPACITY (GAS)	EFF. PRESSURE	UNIT WT. (LBS)	BASES OF DESIGN
RTU-1	RETAIL AREA FRONT CO. AND LINEAR DIFFUSER	4060	3.0	122	93.0	11.0	240	192
RTU-2	RETAIL AREA BEARROOM	3760	3.0	122	93.0	11.0	180	150
RTU-3	PHARMACY	1200	3.0	0.91	1.5	4.0	31.3	11.6
RTU-4	UPPER FLOOR & RECEIVING	2740	4.25	0.6	1.5	90	94.7	11.5
RTU-5	ENTRANCE AREA	2000	3.0	0.6	1.5	45	112	125

① ALL ROOFTOP UNITS SHALL BE 208V - 3 PHASE ② BURGLAR BARS RE 5/8"-0.1 ③ FACTORY PREPARED ROOF CURB ④ ECONOMIZER W/INTERVENTIONAL ENTHALPY CONTROLLER  
 ⑤ BACKDRAFT RELIEF DAMPER ⑥ ELECTRONIC OR HOT PLATE IGNITION ⑦ SMOKE DETECTOR WILL BE FURNISHED AND WIRED TO THE FIRE ALARM SYSTEM BY THE HVAC CONTRACTOR AND SHALL BE INSTALLED BY THE HVAC CONTRACTOR  
 ⑧ STRATER ⑨ DISPOSABLE 30/30 AIR FILTERS ⑩ FACTORY INSTALLED PACKAGED WITH UNIT DISCONNECT AND FIELD WIRED CONDENSATE OUTLET  
 ⑪ HAND = 5169839 ⑫ HAND = 3362645 ⑬ HAND = 4563633 ⑭ HAND = 9212649  
 ⑮ CONDENSER COIL AND EVAPORATOR COIL TO BE COATED W/ TECHNICOAT 10-1 ⑯ CONDENSER COIL TO BE COATED W/ TECHNICOAT 10-1

### DIFFUSER SCHEDULE

TAG	SERVICE	CFM	NECK SIZE	FRAME TYPE	PATTERN	DAMPER	MATERIAL	FINISH	MANUFACTURER & MODEL NO.
(A)	SUPPLY	AS NOTED	AS NOTED	NOTE 1.4	4-WAY	YES	STEEL	OFF-WHITE	METALFLEX 5500 SERIES
(B)	SUPPLY	AS NOTED	AS NOTED	NOTE 2.5	4-WAY	YES	STEEL	OFF-WHITE	METALFLEX 5500 SERIES
(C)	SUPPLY	AS NOTED	AS NOTED	NOTE 2.4	3-WAY	YES	STEEL	OFF-WHITE	METALFLEX 5500 SERIES
(D)	RETURN	AS NOTED	AS NOTED	NOTE 2.4	NA	NO	STEEL	OFF-WHITE	METALFLEX CCI CUBE CORE RET/EXHAUST
(E)	SUPPLY	AS NOTED	AS NOTED	NOTE 1.4	3-WAY	YES	STEEL	OFF-WHITE	METALFLEX 5500 SERIES
(F)	SUPPLY	AS NOTED	AS NOTED	NOTE 1	---	---	STEEL	OFF-WHITE	METALFLEX 6000 SERIES
(G)	RETURN	AS NOTED	AS NOTED	NOTE 1.4	NA	NO	STEEL	OFF-WHITE	METALFLEX CCI CUBE CORE RET/EXHAUST
(H)	SUPPLY	AS NOTED	AS NOTED	NOTE 3	2-WAY	YES	STEEL	OFF-WHITE	METALFLEX 4004
(I)	RETURN	AS NOTED	AS NOTED	NOTE 4	NA	NO	STEEL	OFF-WHITE	METALFLEX CCI CUBE CORE RET/EXHAUST
(J)	RETURN	AS NOTED	AS NOTED	NOTE 1.6	NA	NO	STEEL	OFF-WHITE	METALFLEX CCI CUBE CORE RET/EXHAUST
(K)	RETURN	AS NOTED	AS NOTED	NOTE 3	4-WAY	YES	STEEL	OFF-WHITE	METALFLEX RH-1

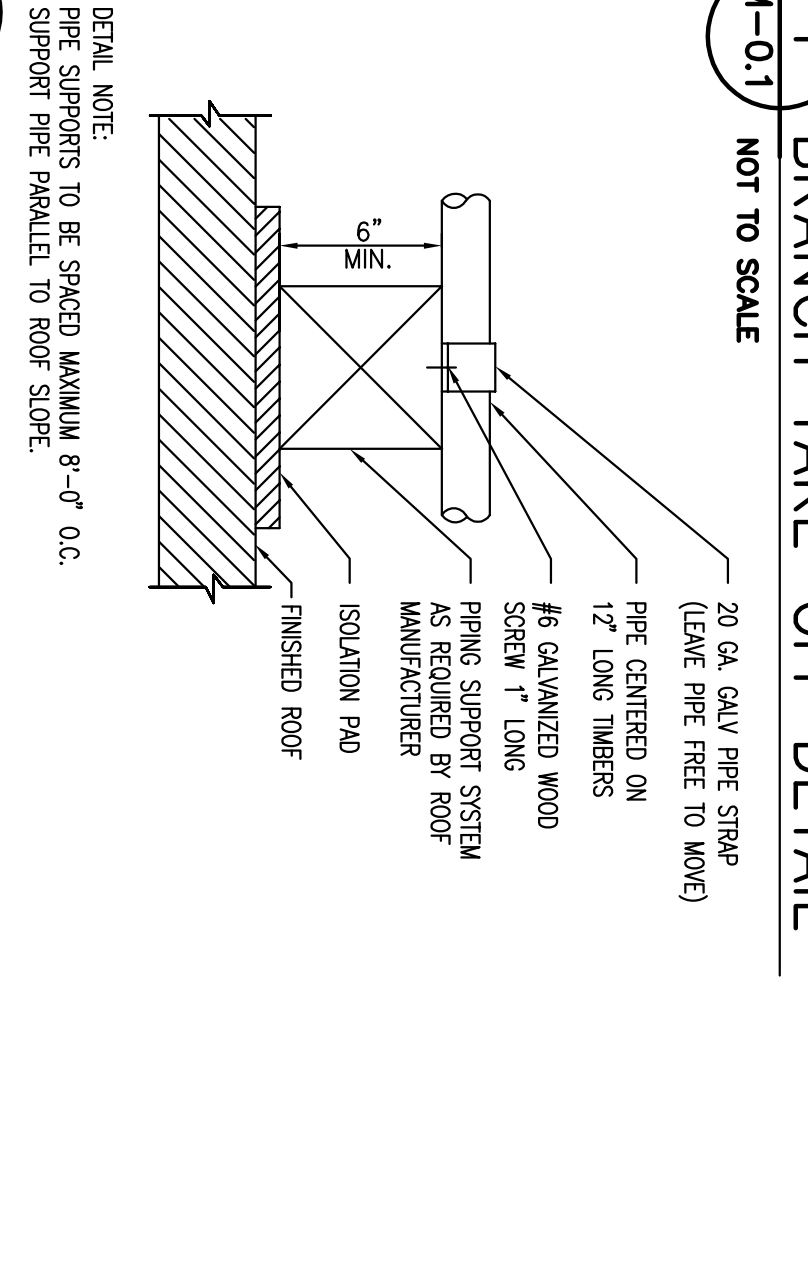
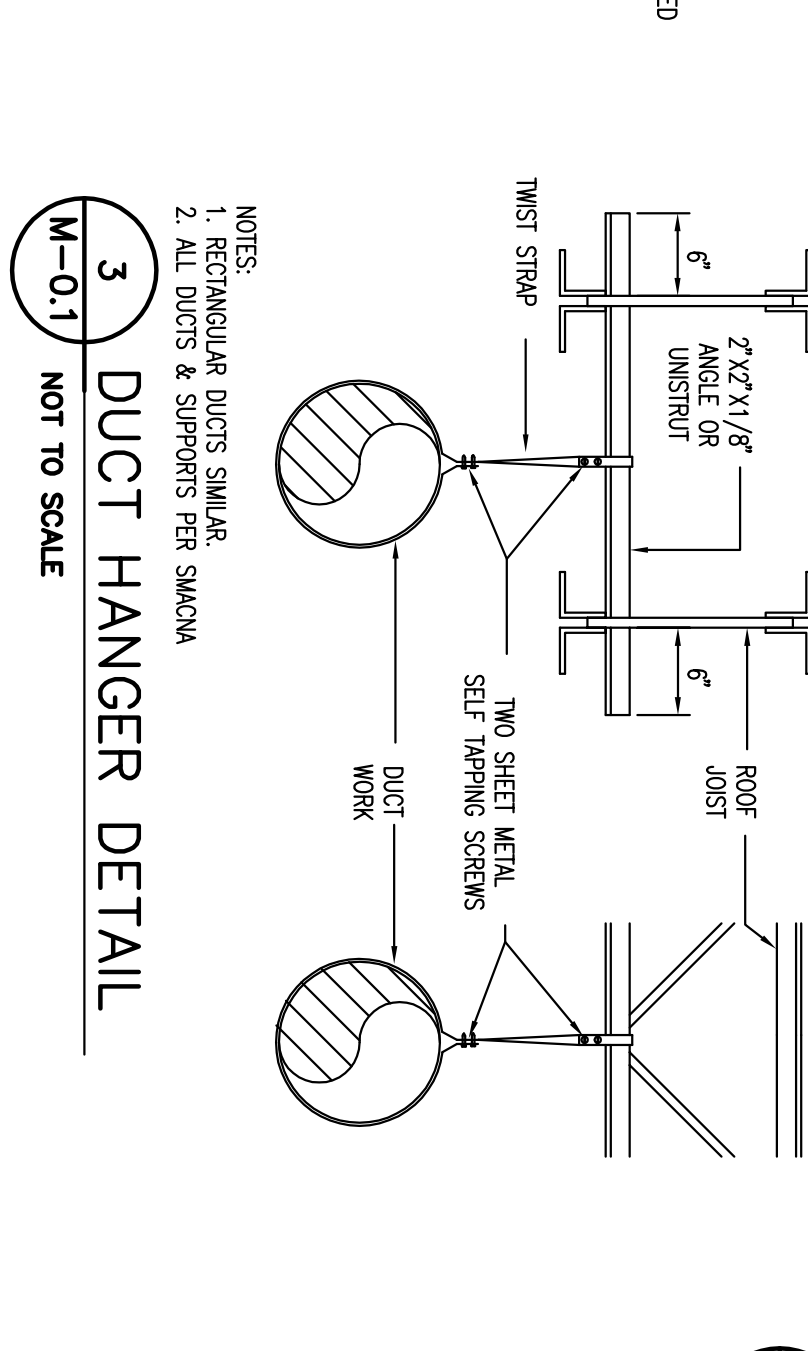
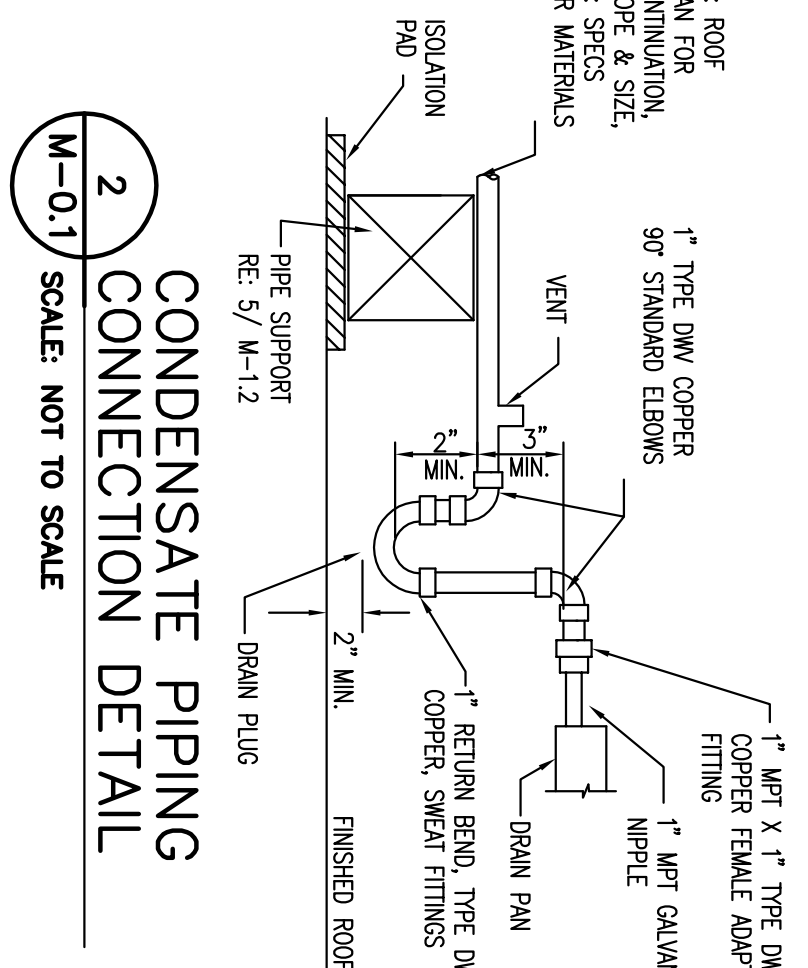


**R. W. Silman Engineering**  
 11000 Main Street, Suite 200  
 Boston, MA 02127  
 Phone: 617.552.7777 Fax: 617.552.8335  
 www.rws.com

### UNIT HEATER SCHEDULE

MARK	MODEL NUMBER	VENTU. IN/OUT	EFF.	FLUE SIZE	GAS PIPING SIZE	FAN DIA.	FAN HP	ELEC.	WEIGHT	REMARKS
UH-1	UDP-75	75/60	80%	4"	3/4"	17 1/2"	115/60/1/8	120 LBS	120	①②③④

① GAS FIRED UNIT HEATER BASED ON MOORE ② FINISHED AND INSTALLED BY MECHANICAL CONTRACTOR, WHEED BY ELECTRICAL CONTRACTOR. ③ PROVIDE HONEYWELL 78333 THERMOSTAT W/ GARD ④ PROVIDE MOTOR STARTER.



**CVS/pharmacy**

**NEW**

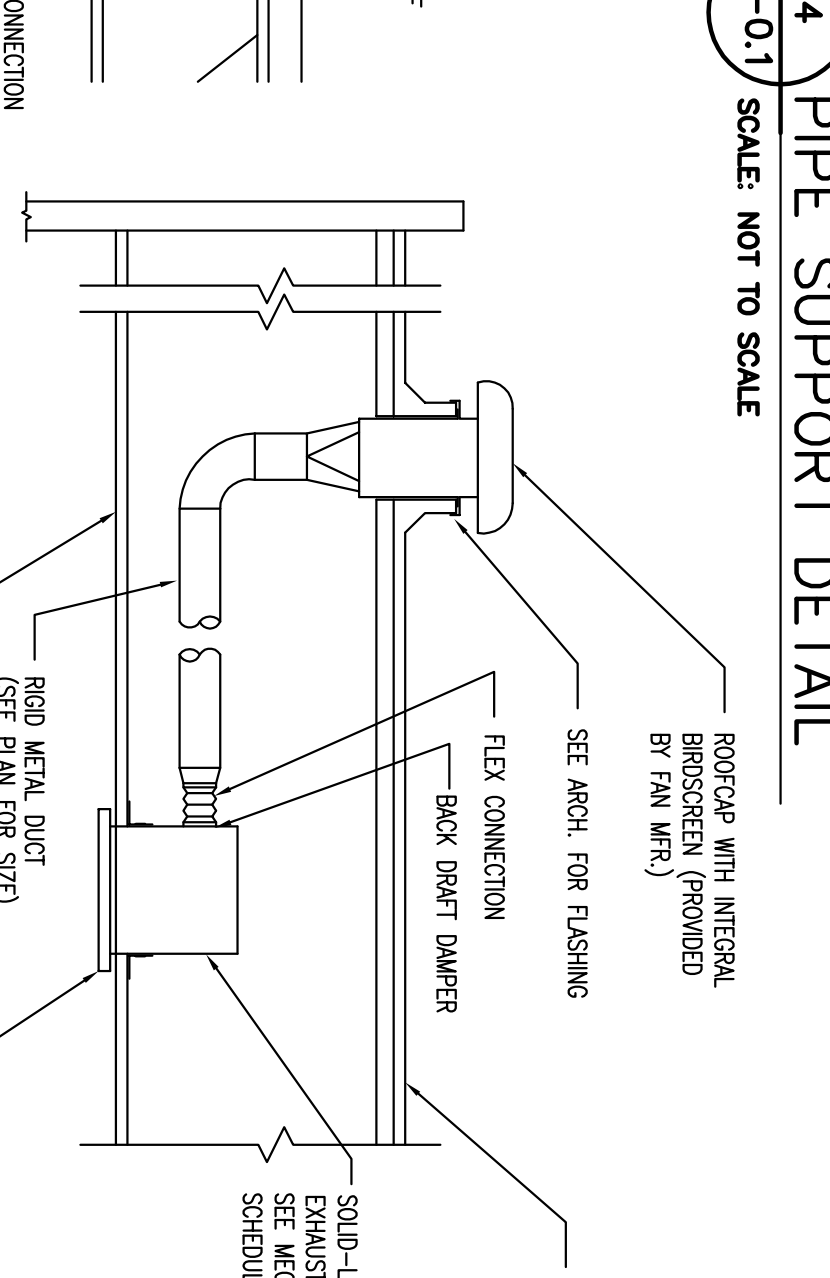
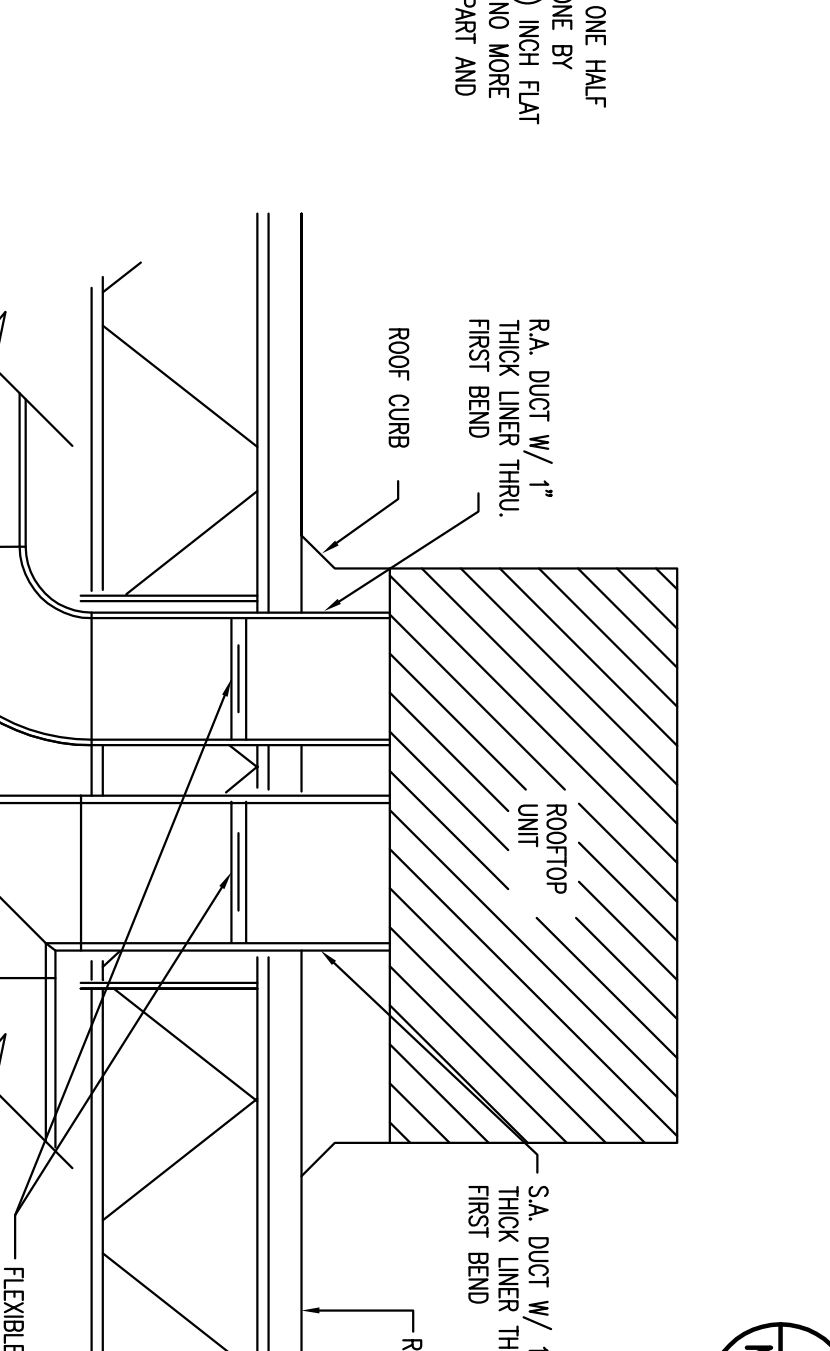
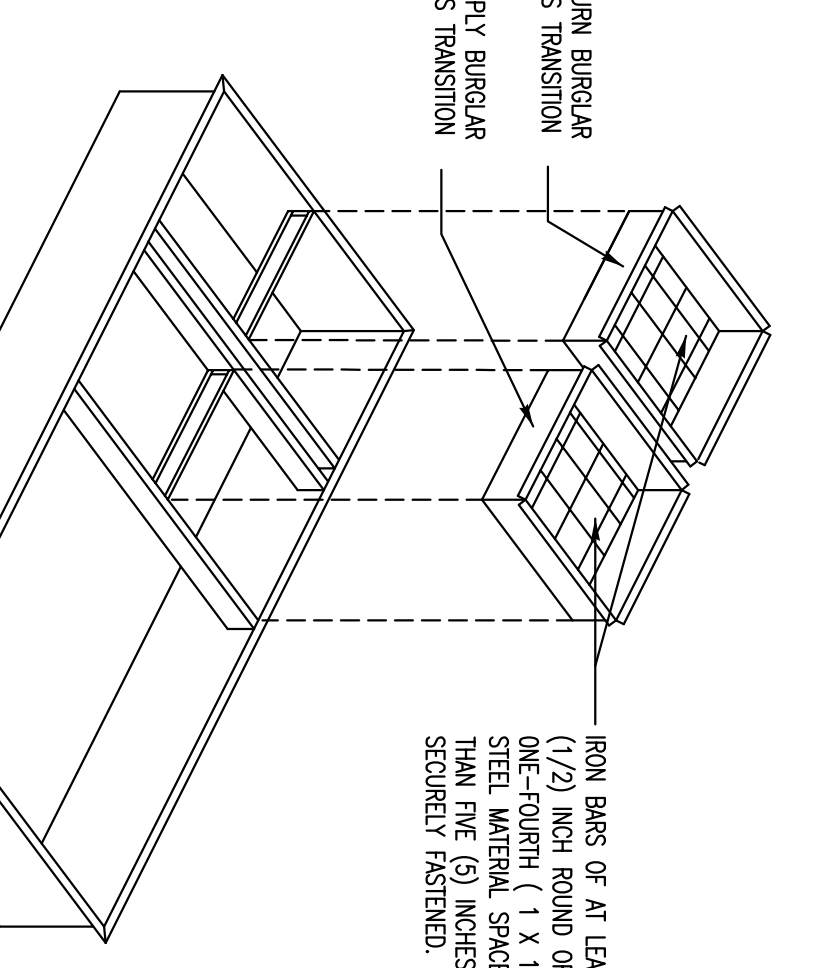
**STORE NUMBER: 329**

NORTHBATE PLAZA  
 91 AUBURN STREET  
 PORTLAND, MAINE

**DEVELOPER:**  
 A & D REALTY, LLC  
 5 MILITIA DRIVE  
 LEXINGTON, MA 02421

### MINI SPLIT SYSTEM SCHEDULE

MARK	MANUFACTURER	MODEL NUMBER	OPERATING VOLTAGE	MCAPACIT	PROVIDE CONDENSATE DRAIN RAMP	SEE PLUMBING SHEETS.
AHU-1	SAVO	K53971	115/1 PHASE	20/20	PROVIDE CONDENSATE DRAIN RAMP	SEE PLUMBING SHEETS.
CU-2	SAVO	C10971	115/1 PHASE	---	INSTALL PER MANUFACTURER INSTRUCTIONS, PROVIDE LOW AMBIENT KIT	---



**REVISIONS:**

**DATE:** 8/31/09

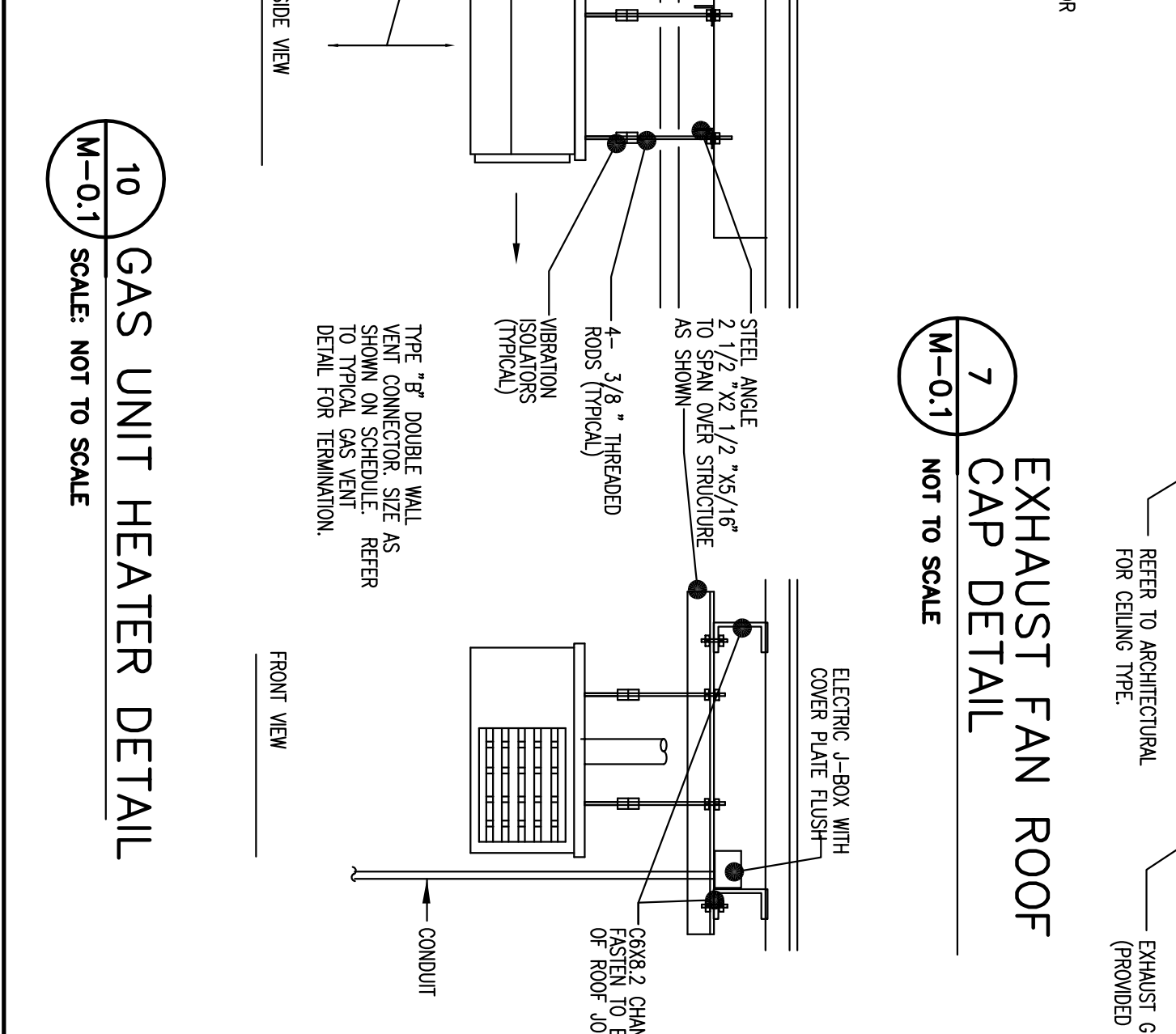
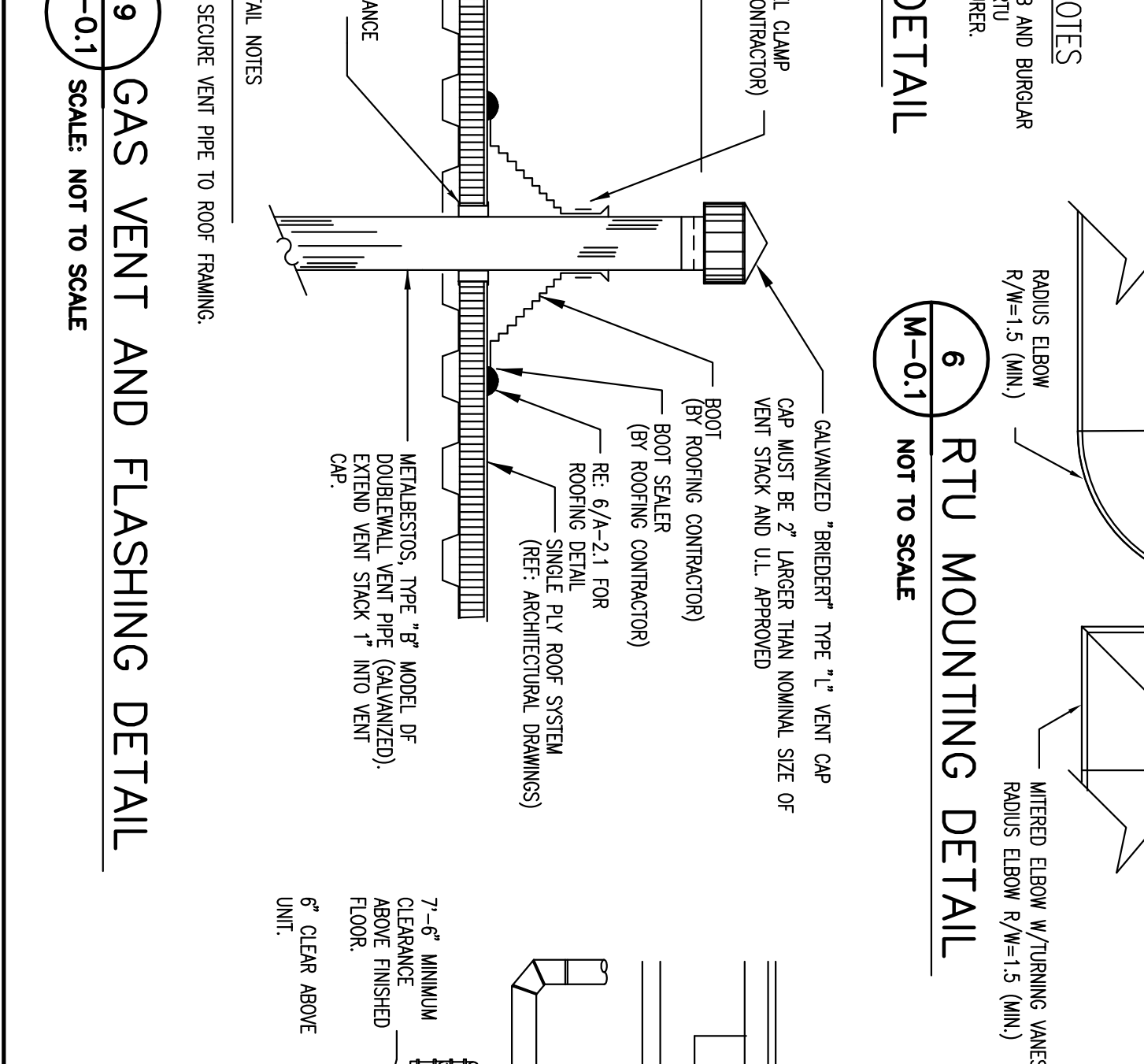
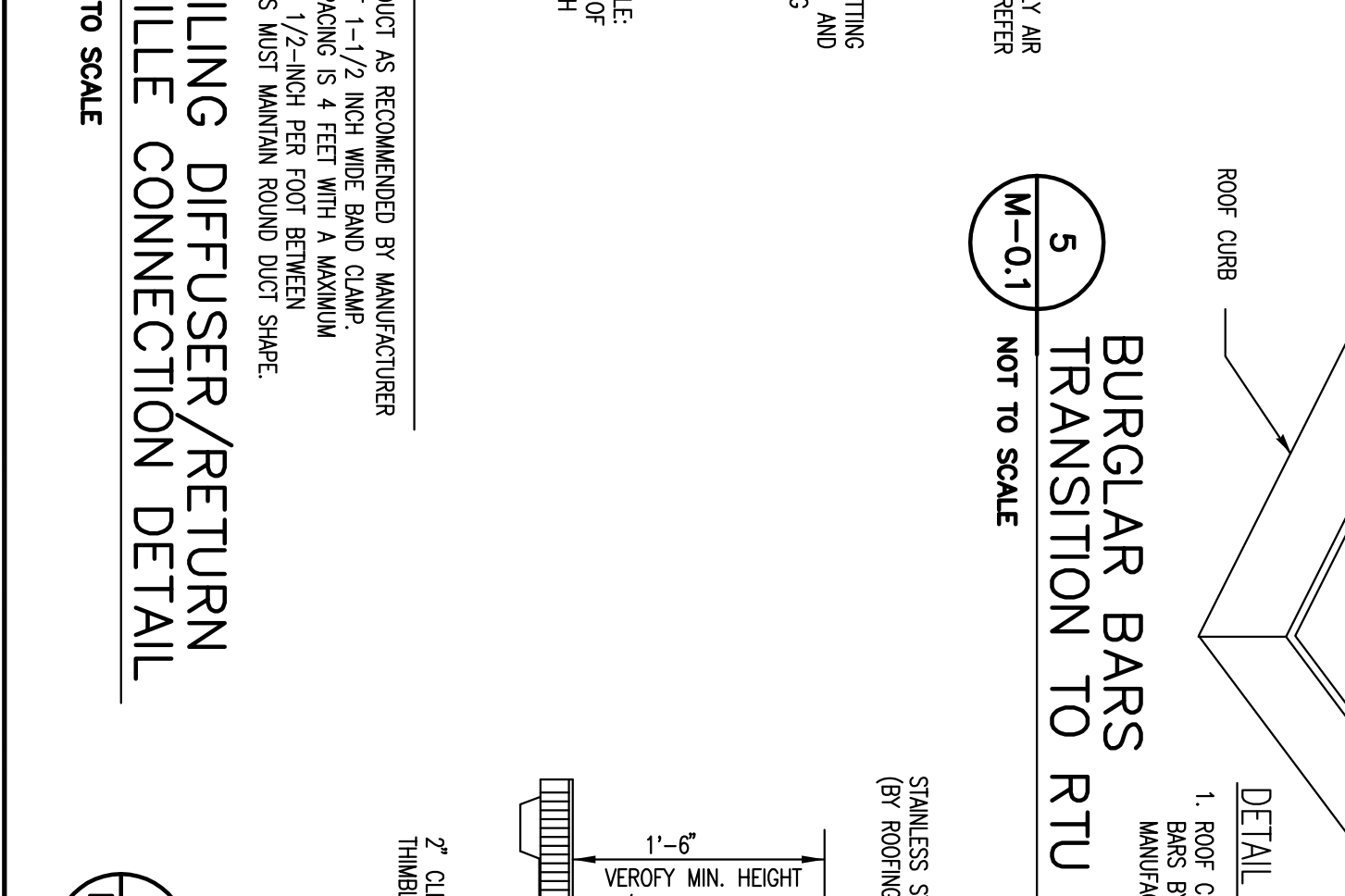
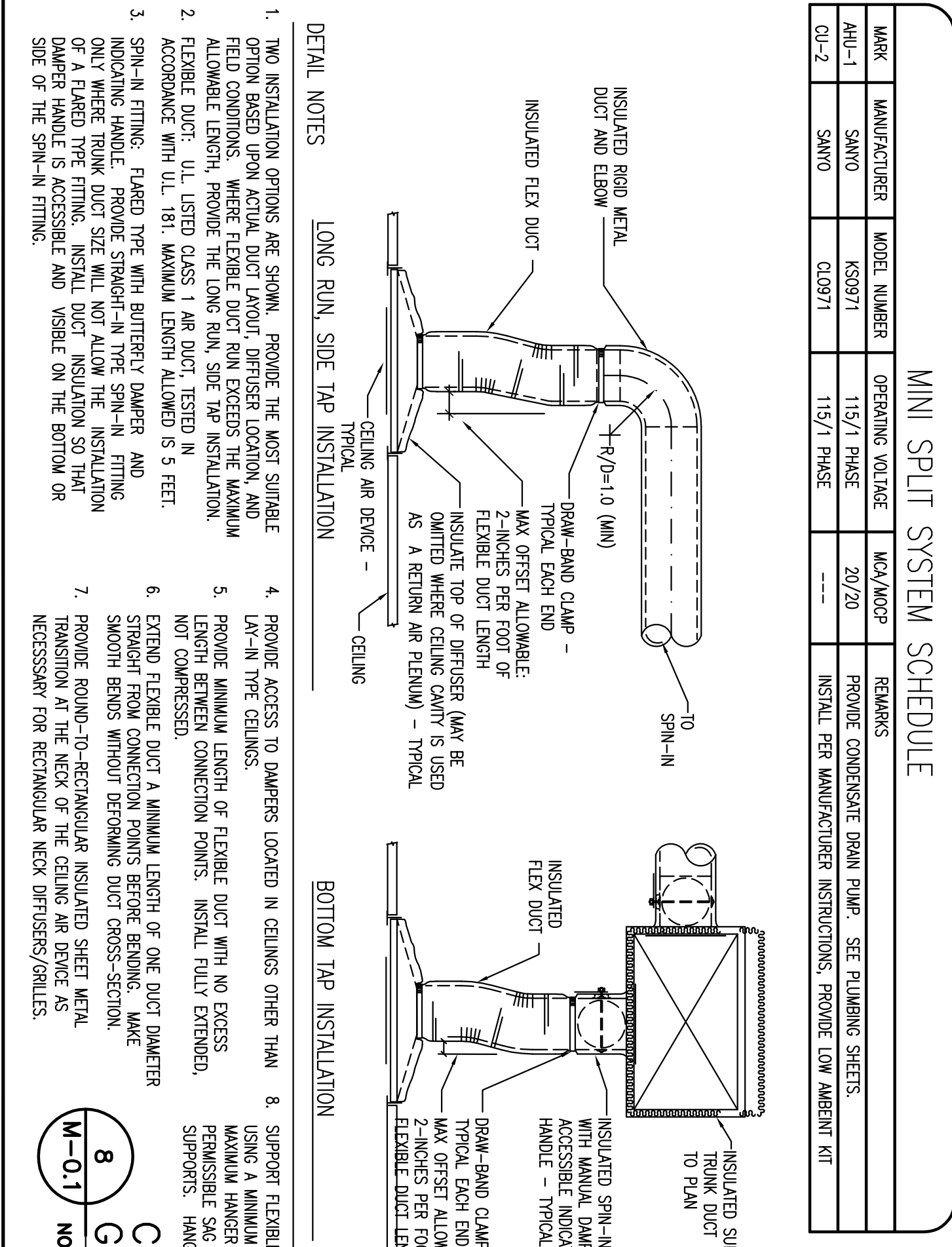
**DRAWING BY:** JHP

**JOB NUMBER:** 209017

**TITLE:** MECHANICAL SCHEDULES & DETAILS

**SHEET NUMBER:** M-0.1

**COMMENTS:** ISSUED FOR CONSTRUCTION



**DETAIL NOTES:**

1. TWO INSTALLATION OPTIONS ARE SHOWN. PROVIDE THE MOST SUITABLE OPTION BASED UPON ACTUAL DUCT LAYOUT, DIFFUSER LOCATION, AND FIELD CONDITIONS. WHERE FLEXIBLE DUCT RUN EXCEEDS THE MAXIMUM ALLOWABLE LENGTH, PROVIDE THE LONG RUN SIDE TAP INSTALLATION.

2. FLEXIBLE DUCT: UL LISTED CLASS 1 AIR DUCT, TESTED IN ACCORDANCE WITH UL 181. MAXIMUM LENGTH ALLOWED IS 5 FEET.

3. SPIN-IN FITTING: FLARED TYPE WITH BUTTERFLY DAMPER AND INDICATING HANDLE. PROVIDE SPIN-IN FITTING AND INDICATING HANDLE. PROVIDE SPIN-IN FITTING AND INDICATING HANDLE. PROVIDE SPIN-IN FITTING AND INDICATING HANDLE. PROVIDE SPIN-IN FITTING AND INDICATING HANDLE.

4. PROVIDE ACCESS TO DAMPERS LOCATED IN CEILING OTHER THAN LAV-IN TYPE CEILING.

5. PROVIDE MINIMUM LENGTH OF FLEXIBLE DUCT WITH NO EXCESS LENGTH BETWEEN CONNECTION POINTS. INSTALL FULLY EXTENDED, NOT COMPRESSED.

6. EXTEND FLEXIBLE DUCT A MINIMUM LENGTH OF ONE DUCT DIAMETER STRAIGHT FROM CONNECTION POINTS BEFORE BENDING. MAKE SMOOTH BENDS WITHOUT DEFORMING DUCT CROSS-SECTION.

7. PROVIDE ROUND-TO-RECTANGULAR INSULATED SHEET METAL DAMPER HANDLE IS ACCESSIBLE AND VISIBLE ON THE BOTTOM OR SIDE OF THE SPIN-IN FITTING.

8. SUPPORT FLEXIBLE DUCT AS RECOMMENDED BY MANUFACTURER USING A MINIMUM OF 1-1/2" INCH WIDE BAND CLAMP. MAXIMUM HANGER SPACING IS 4 FEET WITH A MAXIMUM PERMISSIBLE SAG OF 1/2-INCH PER FOOT BETWEEN SUPPORTS. HANGERS MUST MAINTAIN ROUND DUCT SHAPE.

**REVISIONS:**

**DATE:** 8/31/09

**DRAWING BY:** JHP

**JOB NUMBER:** 209017

**TITLE:** MECHANICAL SCHEDULES & DETAILS

**SHEET NUMBER:** M-0.1

**COMMENTS:** ISSUED FOR CONSTRUCTION

**REVISIONS:**

**DATE:** 8/31/09

**DRAWING BY:** JHP

**JOB NUMBER:** 209017

**TITLE:** MECHANICAL SCHEDULES & DETAILS

**SHEET NUMBER:** M-0.1

**COMMENTS:** ISSUED FOR CONSTRUCTION

**REVISIONS:**

**DATE:** 8/31/09

**DRAWING BY:** JHP

**JOB NUMBER:** 209017

**TITLE:** MECHANICAL SCHEDULES & DETAILS

**SHEET NUMBER:** M-0.1

**COMMENTS:** ISSUED FOR CONSTRUCTION