

J:\2009\80766-00\Drawings\Plans-AutoCAD\Plumbing_FP\80766-00_FP-0.1.dwg Sep 01, 2009 - 3:41 pm RMP

FIRE PROTECTION LEGEND

SYMBOL	ABBR	DESCRIPTION
	F	BURIED FIRE PROTECTION WATER SERVICE
	F	FIRE MAIN PIPING
	SPR	WET SPRINKLER PIPING
	D	DRY SPRINKLER PIPING
	DR	DRAIN PIPING
	PC	PUMPER CONNECTION PIPING
	TC	TEST CONNECTION PIPING
	MACV	MAIN ALARM CHECK VALVE
	FDC	4" STORZ FIRE DEPARTMENT CONNECTION
	FS	FLOW SWITCH
	OS&Y	OUTSIDE SCREW & YOKE VALVE W/ TAMPER SWITCH
	CV	CHECK VALVE
	CVD	CHECK VALVE W/ BALL DRIP
	VV	VALVE IN VERTICAL
	DCVA	DOUBLE CHECK VALVE ASSEMBLY
		PIPE CAP
		PIPE CONTINUATION
		PIPE UP THRU SLAB OF FLOOR ABOVE
		PIPE DOWN THRU FLOOR SHOWN
		PIPE DROP
		PIPE RISE
		ELECTRIC ALARM BELL
	VIF	VERIFY IN FIELD
	NTS	NOT TO SCALE
	L.O.W.	LIMIT OF WORK
		HYDRAULIC CALCULATION NODE POINT
	F	FLOW SWITCH (FURNISHED BY FP SUBCONTRACTOR & WIRED BY ELECTRICAL SUBCONTRACTOR)
	T	TAMPER SWITCH (FURNISHED BY FP SUBCONTRACTOR & WIRED BY ELECTRICAL SUBCONTRACTOR)
	LP	LOW PRESSURE SWITCH (FURNISHED BY FP SUBCONTRACTOR & WIRED BY ELECTRICAL SUBCONTRACTOR)

HYDRAULIC DESIGN INFORMATION

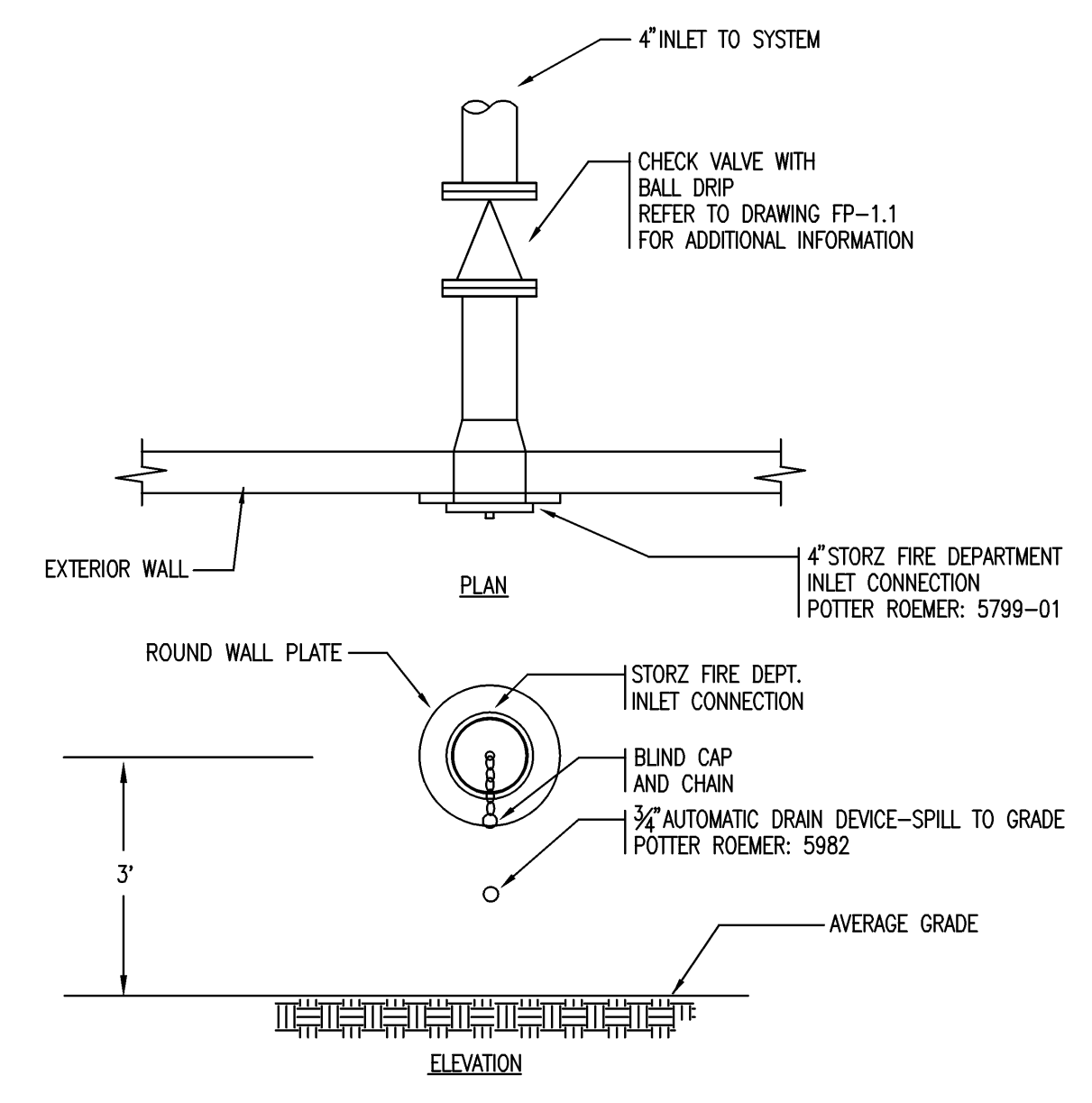
SYSTEM NUMBER:	1	REMOTE AREA NUMBER:	1
OCCUPANCY CLASSIFICATION:	ORDINARY HAZARD GROUP II	AREA OF APPLICATION:	1,500 SQ.FT.
DENSITY:	0.20 GPM/SQ.FT.	SYSTEM TYPE:	WET
NO. OF HEADS CALC'D:	-	ORIFICE SIZE:	1/2"
SQ. FT. PER HEAD:	130 SQ FT	HOSE STREAM REQUIRED:	0 GPM (INSIDE) 250 GPM (TOTAL COMBINED INSIDE & OUTSIDE)

SPRINKLER SCHEDULE

SYMBOL	DESCRIPTION
	RELIABLE MODEL GFR QUICK RESPONSE EXPOSED UPRIGHT SPRINKLER HEAD WITH 165°F TEMPERATURE RATING, AND 1/2" ORIFICE.
	RELIABLE MODEL F1FR QUICK RESPONSE PENDENT SPRINKLER WITH 155°F TEMPERATURE RATING, AND 1/2" ORIFICE.
	RELIABLE MODEL F3OR QUICK RESPONSE DRY PENDENT SPRINKLER WITH 155°F TEMPERATURE RATING, AND 1/2" ORIFICE.
	TYCO MODEL DS-3, OR APPROVED EQUAL, EXTENDED COVERAGE DRY HORIZONTAL SIDEWALL SPRINKLER HEAD WITH 200°F TEMPERATURE RATING, AND 1" ORIFICE.

FIRE PROTECTION GENERAL NOTES

- ALL WORK TO OCCUR AT OWNER'S CONVENIENCE. NOTIFY OWNER WELL IN ADVANCE OF BEGINNING ANY PHASE OF WORK.
- FIRE PROTECTION CONTRACTOR SHALL COORDINATE ALL NEW FIRE PROTECTION SYSTEM ALARM ZONES WITH THE OWNER.
- SPRINKLER HEADS ARE SHOWN FOR COORDINATION PURPOSES WITH ARCHITECTURAL REFLECTED CEILING PLANS. SUBCONTRACTOR SHALL ESTABLISH FOR HIMSELF, THE EXACT QUANTITY AND LOCATION OF HEADS REQUIRED FOR THIS PROJECT AND THE EXACT EXTENT OF WORK REQUIRED. INCLUDING ADDITIONAL HEADS NEEDED FOR COORDINATION WITH OBSTRUCTIONS. CONTRACTOR SHALL PROVIDE ADDITIONAL HEADS AS NECESSARY TO COORDINATE WITH OBSTRUCTIONS WITHOUT ANY ADDITIONAL COST TO THE OWNER.
- HYDRANT FLOW TEST DATA IS BASED ON THE MOST RECENT HYDRANT FLOW TEST AVAILABLE FROM THE LOCAL WATER DEPT. FIRE PROTECTION CONTRACTOR SHALL PERFORM HIS OWN HYDRAULIC CALCULATIONS. ACTUAL PIPE SIZES SHALL BE DETERMINED BY HYDRAULIC CALCULATIONS USING CURRENT SITE SPECIFIC FLOW DATA.
- REFER TO SPECIFICATIONS FOR FIRE PROTECTION SYSTEM REQUIREMENTS. SYSTEM SHALL BE DESIGNED FOR MAXIMUM STORAGE HEIGHT OF 10 FEET.
- CONTRACTOR SHALL BE RESPONSIBLE FOR FINAL SYSTEM DESIGN AND LAYOUT. A REQUEST FOR INFORMATION SHALL BE SUBMITTED FOR ANY QUESTIONS, COMMENTS, OR REVISIONS TO THESE DOCUMENTS.
- CONTRACTOR SHALL COORDINATE LOCATIONS OF PIPING, ALARMS, DRAINS, TEST POINTS, ETC., WITH ARCHITECTURAL, STRUCTURAL, MECHANICAL AND ELECTRICAL DRAWINGS.
- FOR DRY SPRINKLER SYSTEM, ALL SPRINKLER PIPING 2-1/2" AND LARGER SHALL BE GALVANIZED SCHEDULE 10 PIPING & FITTINGS. ALL SPRINKLER PIPING 2" OR SMALLER SHALL BE GALVANIZED SCHEDULE 40 PIPING & FITTINGS.
- FOR WET SPRINKLER SYSTEM, ALL SPRINKLER PIPING 2-1/2" AND LARGER SHALL BE BLACK STEEL SCHEDULE 10 PIPING & FITTINGS. ALL SPRINKLER PIPING 2" AND SMALLER SHALL BE BLACK STEEL SCHEDULE 40 PIPING & FITTINGS.
- AUXILIARY DRAINAGE IN ACCORDANCE WITH NFPA 13 SHALL BE PROVIDED FOR ALL TRAPPED SECTIONS OF PIPE.
- PIPE ALL DRAINS AND INSPECTOR'S TEST TO OUTSIDE OR DRAIN TO A DRAIN APPROVED BY THE OWNER FOR SPRINKLER DISCHARGE.
- PROVIDE 1" DROPS TO PENDENT SPRINKLERS LOCATED BELOW RTU DUCTWORK.
- THESE PLANS HAVE BEEN PREPARED FOR GUIDANCE IN BIDDING. CONTRACTOR IS RESPONSIBLE FOR OBTAINING APPROVAL OF HIS WORKING DRAWINGS FROM THE AUTHORITY HAVING JURISDICTION.
- REFER TO DRAWING FP-1.1 FOR PROPOSED FIRE DEPARTMENT CONNECTION LOCATION, FINAL LOCATION SHALL BE APPROVED BY THE LOCAL FIRE DEPARTMENT PRIOR TO INSTALLATION.
- ALL SPRINKLER PIPING SHALL HAVE CALCULATED SEISMIC BRACING IN ACCORDANCE WITH THE MAINE BUILDING CODE.



1
FP-0.1
 DETAIL OF FIRE DEPARTMENT CONNECTION - 4" STORZ
 SCALE: NOT TO SCALE

bka
BKA Architects, Inc.
 Architecture + Interiors
 142 Crescent Street
 Brockton, MA 02302
 tel : 508.583.5603
 fax : 508.584.2914
 e-mail : bka@bkaarch.com

CONSULTANT:

 R. W. Sullivan Engineering
 HVAC, Electrical, Plumbing, Fire Protection, Code
 The Sprague Center, 529 Main St., Suite 203
 Boston, Massachusetts 02128-1103
 Phone: (617) 553-8227 Fax: (617) 553-8016
 www.rwsusa.com
 RWS ACS # 80798J00

SEAL:

CVS/
pharmacy
 NEW
 STORE NUMBER: 329
 NORTHGATE PLAZA
 91 AUBURN STREET
 PORTLAND, MAINE

DEVELOPER:
 A & D REALTY, LLC
 5 MILITIA DRIVE
 LEXINGTON, MA 02421

REVISIONS:

DRAWING BY: RMP
 DATE: 8/31/09
 JOB NUMBER: 209017
 TITLE:
 FIRE PROTECTION LEGEND,
 NOTES, AND DETAILS
 SHEET NUMBER:
 FP-0.1
 COMMENTS:
 ISSUED FOR CONSTRUCTION

Copyright © 2009 by BKA Architects, Inc. The reproduction, transmission, or distribution of this document, in whole or in part, without the express written consent of BKA Architects, Inc. is prohibited. This document is intended for the use of the recipient only. The recipient shall be responsible for obtaining the appropriate permits and approvals for the project. The recipient shall be responsible for obtaining the appropriate permits and approvals for the project. The recipient shall be responsible for obtaining the appropriate permits and approvals for the project.