

ALARM SYSTEM LEGEND	
FB	FIRE ALARM PULL BOX
FC	FIRE ALARM CONTROL PANEL
AN	ANNUNCIATOR
DS	DUCT SMOKE DETECTOR
RTS	REMOTE TEST/ALARM SWITCH
ES	EQUIPMENT SHUT-DOWN RELAY
SL	STROBE LIGHT AT 80" A.F.F.
S	SMOKE DETECTOR
FD	FIRE DETECTOR
SS	SOUNDER / STROBE AT 80" A.F.F.
SC	SOUNDER / STROBE CEILING MOUNTED
FS	FULL STATION AT 48" A.F.F.
MA	MASTER BOX WITH ANTENNA
D	DIGITAL COMMUNICATOR
STV	SPRINKLER TAMPER VALVE
SPS	SPRINKLER PRESSURE SWITCH
FFS	SPRINKLER FLOW SWITCH
LP	SPRINKLER LOW PRESSURE ALARM
W	WEATHERPROOF HORN STROBE BEACON
M	MONITOR MODULE
K	KNOX BOX
B	SPRINKLER BELL

FIRE ALARM NOTES

CONTROL PANEL ADDRESSABLE SYSTEM WITH OUTPUT TO ACTIVATE CONTROL SYSTEM DIALER. INCLUDES POWER SUPPLY, BATTERIES AND ANNUNCIATOR.

LOC-80 REMOTE DISPLAY/CONTROL ANNUNCIATOR.

DIGITAL COMMUNICATOR.

SMOKE DETECTORS PHOTOELECTRIC SMOKE DETECTORS WITH BASE.

DUCT SMOKE DETECTORS PHOTOELECTRIC SMOKE DETECTORS WITH SHUT-DOWN RELAY.

REMOTE TEST STATION PROVIDED WHERE DIRECTED BY THE DEPARTMENT ONE PER DEPARTMENT ONE.

FULL COMPLIANT FRODOUD WHERE INDICATED WITH UL LISTED AND ADA COMPLIANT 75 CANDELA STROBE.

STROBE - ADA COMPLIANT PROVIDED WHERE INDICATED WITH UL LISTED AND ADA COMPLIANT 75 CANDELA STROBE.

ROUNDED SQUARE SIGNAL PROVIDED WHERE INDICATED TO MATCH THE CONTROL PANEL.

SYSTEM OPERATION:

ACTIVATION OF ANY ALARM INITIATING DEVICES SHALL AUTOMATICALLY INITIATE THE FOLLOWING:

1. CAUSE AN AUDIBLE ALARM SIGNAL TO SOUND AND THE SYSTEM ALARM LED TO LIGHT AT THE FIRE ALARM CONTROL PANEL. AUDIBLE SIGNAL SHALL BE CHANGABLE OF BEING SILENCED BY THE ALARM CONDITION.
2. INDICATE ON PANEL AND ANNUNCIATOR 80 CHARACTER LCD DISPLAY THE DEVICE IN ALARM AND LOCATION.
3. CAUSE ALL SYSTEM HORNS TO SOUND A TEMPORAL PATTERN.
4. CAUSE ALL VISUAL ALARMS TO FLASH.
5. ACTIVATE THE RADIO MASTER BOX AND DUAL LINE DIGITAL COMMUNICATOR.
6. ALL TAMPER SWITCHES SHALL BE SILENT.

SYSTEM NOTES

THE ACTIVATION OF A WATERFLOW SWITCH WILL INITIATE AN ALARM. THE ACTIVATION OF A WATERFLOW SWITCH ON THE CONTROL PANEL.

FIRE ALARM NOTES

FIRE ALARM SYSTEM TO BE INSTALLED BY ONE CONTRIBUTION REGION.

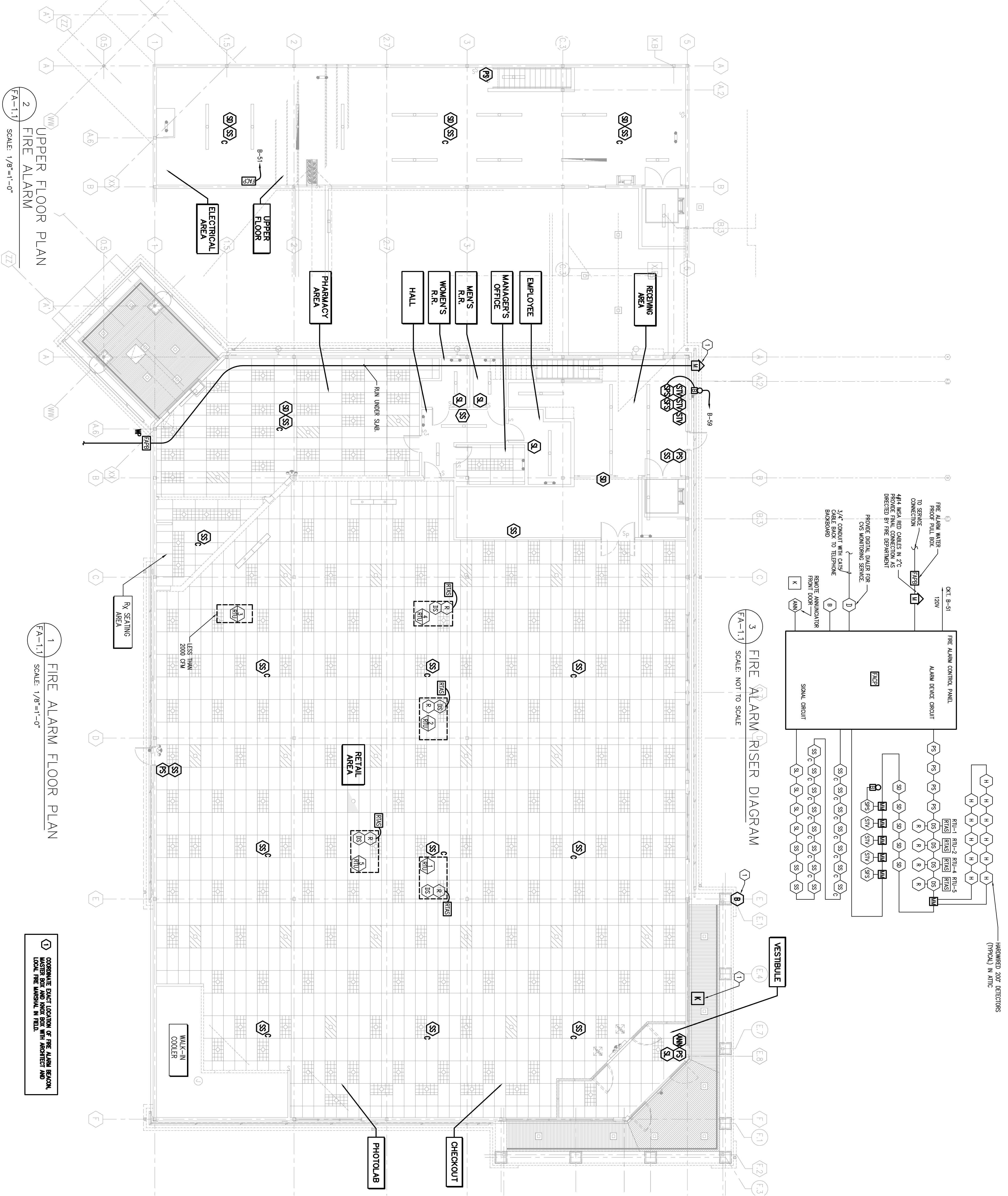
FIRE SYSTEM DESIGN SHALL BE BASED ON THE IBC AND ONE BEST PROTECTION SERVICES (OPS) SPECIFICATIONS.

FIRE ALARM ANNUNCIATOR TO BE MOUNTED 5'-0" AFF AT FRONT ENTRANCE DOOR NEAR BACKUP ALARM KEYHOLE.

CONDUIT ROUTING LOCATIONS WITH ONE ALARM VENDOR PRIOR TO ROUNGIN AND PROVIDE BACK BOX AND CONDUIT IN WALL TO THE CEILING.

FIRE ALARM VENDOR TO FINISH DUCT SMOKE DETECTORS WITH VISUAL ANNUNCIATION, RESET SWITCH, AND QUIET SILENCER. VENDOR TO PROVIDE FIRE ALARM ANNUNCIATOR AND BE CONNECTED TO FIRE ALARM CONTROL PANEL BY THE ALARM VENDOR.

WATER FLOW AND VALVE SUPERVISION SWITCHES TO BE SUPPLIED BY SPRINKLER CO. FIRE ALARM VENDOR TO PROVIDE BACK BOXES AND CONNECT TO THE FIRE ALARM CONTROL PANEL.



3 FIRE ALARM RISER DIAGRAM
FA-1.7 SCALE: NOT TO SCALE

2 UPPER FLOOR PLAN
FA-1.7 SCALE: 1/8"=1'-0"

1 FIRE ALARM FLOOR PLAN
FA-1.1 SCALE: 1/8"=1'-0"

① CORRELATE EXACT LOCATION OF THE ALARM BEACON, MASTER BOX AND KNOX BOX WITH ARCHITECT AND LOCAL FIRE MARSHAL IN FIELD.

Copyright © 2008 by BKA Architects, Inc. The architectural plans, drawings, design, specifications and other arrangements on this sheet are and shall remain the property of BKA Architects, Inc. No part thereof shall be copied, disclosed to others, or used in connection with any work or project, other than the specified project for which they have been prepared and developed, without the express knowledge and written consent of BKA Architects, Inc.

CONSULTANT:
R. W. Sloman Engineering
142 Crescent Street, Brockton, MA 02302
Phone: 508.694.2914
Fax: 508.694.2914
E-mail: bka@bkaarch.com

DEVELOPER:
A & D REALTY, LLC
5 MILITIA DRIVE
LEXINGTON, MA 02421

NEW
CVS/Pharmacy
STORE NUMBER: 329
NORRPHATE PLAZA
91 AUBURN STREET
PORTLAND, MAINE

DRAWING BY: HYZ
DATE: 8/31/09
JOB NUMBER: 209017
TITLE: FIRE ALARM FLOOR PLANS
SHEET NUMBER: FA-1.1
ISSUED FOR CONSTRUCTION

REVISIONS:

**142 Crescent Street
Brockton, MA 02302
tel : 508.694.2914
fax : 508.694.2914
e-mail : bka@bkaarch.com**

**BKA Architects, Inc.
Architecture + Interiors**