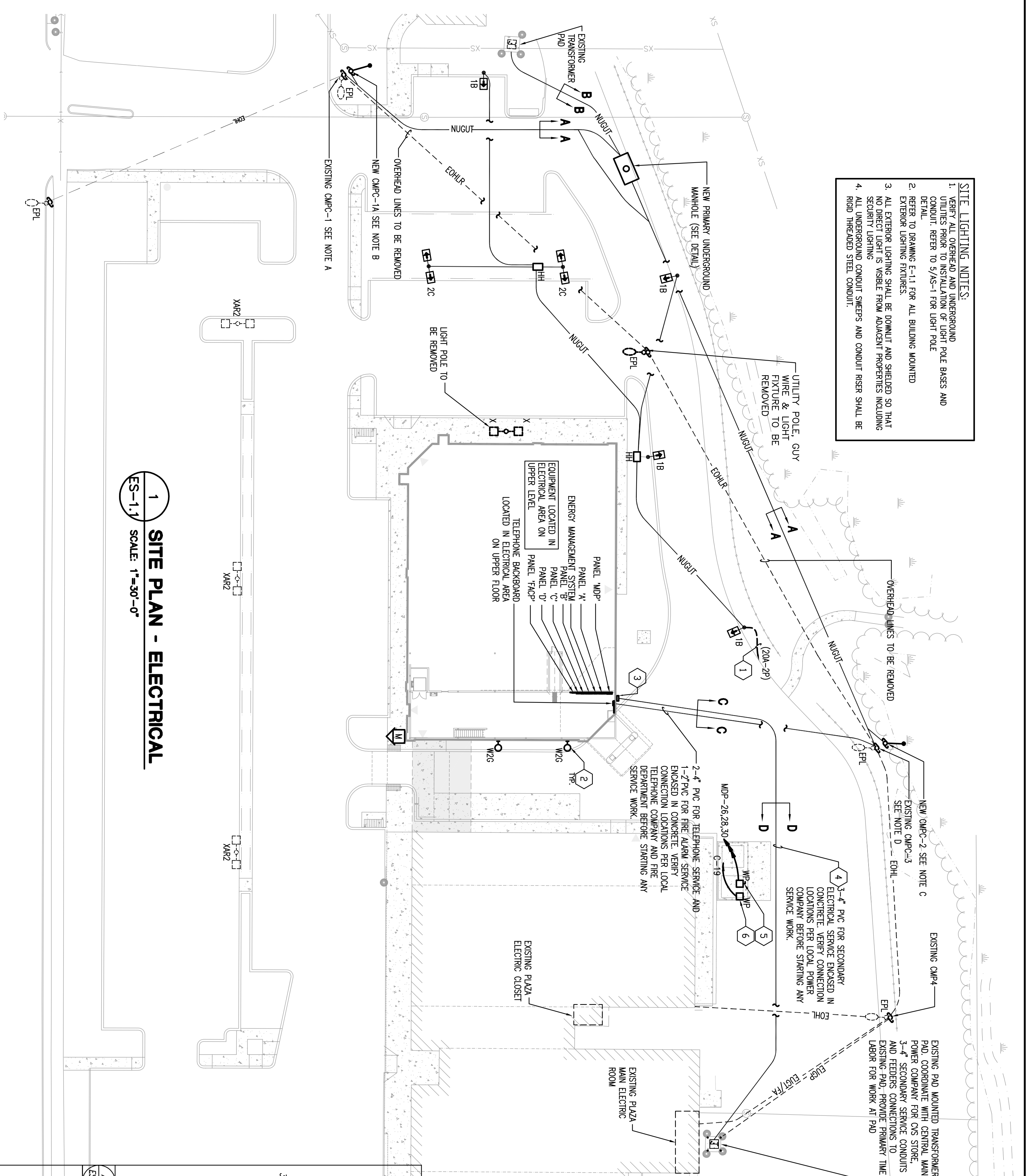


- SITE LIGHTING NOTES:**
1. VERIFY ALL OVERHEAD AND UNDERGROUND POLE BASES AND CONDUIT REFER TO 5/4'S-11 FOR LIGHT POLE DETAIL.
 2. REFER TO DRAWING E-11 FOR ALL BUILDING MOUNTED EXTERIOR LIGHTING FIXTURES.
 3. ALL EXTERIOR LIGHTING SHALL BE DOWNLIT AND SHIELDED SO THAT NO DIRECT LIGHT IS VISIBLE FROM ADJACENT PROPERTIES INCLUDING EXTERIOR LIGHTING FIXTURES.
 4. ALL UNDERGROUND CONDUIT SIZES AND CONDUIT RISER SHALL BE AS SHOWN ON THIS DRAWING.



LIGHTING FEATURE SCHEDULE
ALL FINISHES SHALL BE PURCHASED THROUGH WEBBBERG-BROWN CO. (888) 230 1869

MARK	DESCRIPTION	MOUNTING	VOLTS	LAMPS	REMARKS
1A	(1) EXISTING HANDBOOK WITH 27'-0" POLE, RAY TWIN LUMINAIRE, POLE BASE 3'-0"	POLE MOUNTED	-	2-XXW-SUPER 1-250W-SUPER 1-180 PER LUMINAIRE	PROVIDE GREY FINISH, PROVIDE POLE WIND RAINING FOR AREA INSTALLED.
1B	(1) HUBBEL MSY-4-HS-FHS WITH 27'-0" POLE, RAY MOUNT SINGLE LUMINAIRE, #SS-27-88-3-86-XX POLE BASE 3'-0"	POLE MOUNTED	208	2-250W-SUPER HALIDE PER LUMINAIRE	PROVIDE GREY FINISH, PROVIDE POLE WIND RAINING FOR AREA INSTALLED.
2C	(2) HUBBEL MSY-4-HS-FHS WITH 27'-0" POLE, RAY MOUNT TWIN LUMINAIRE, #SS-27-80-3-86-XX POLE BASE 3'-0"	POLE MOUNTED	208	2-250W-SUPER HALIDE PER LUMINAIRE	PROVIDE GREY FINISH, PROVIDE POLE WIND RAINING FOR AREA INSTALLED.

- ELECTRICAL LEGEND NOTES (SHEET SE-11 ONLY):**
1. PROVIDE 2# & #8S, - 1" C, THROUGHOUT GROUT, CONNECT TO EXISTING PLAZA PANEL, IF REQUIRED.
 2. COORDINATE ALL EXTERIOR WALL LIGHT FIXTURE LOCATIONS WITH SHEET A-4.1 AND REFER SHEET E-11 FOR CIRCUIT INFORMATION.
 3. ELECTRICAL SERVICE ENTRANCE LOCATION OF POWER COMPANY METER/CT CABINET AND FURTHER DETAILS, LOCATION, REF. E-1.2.
 4. PROVIDE SECONDARY CONDUIT AND WIRING FROM UTILITY TRANSFORMER. SEE ELECTRICAL RISER DIAGRAM ON SHEET E-2.2 FOR FURTHER INFORMATION.
 5. PROVIDE 6#A/2#A/2#B/2#C DISCONNECT SWITCH, CONNECT TO RISER COMPACTORS (20#V/2# 10 HP), CIRCUIT TO PANEL WITH #6 & #10S - 3/4" C, COORDINATE LOCATION OF DISCONNECT SWITCH WITH ARCHITECT PRIOR TO RIGGING-IN, INSTALL DISCONNECT SWITCH AT 44' AFF.
 6. RISER COMPACTORS START/STOP STATION, PROVIDE CONNECTION TO 120V CONTROL CIRCUIT, MOUNT SWITCH 32" AFF. TO CENTER OF SWITCH TO CLEAR WANSOOT.

LEGEND

- EOH --- EXISTING OVER HEAD LINE
- EUG --- EXISTING UNDERGROUND PRIMARY SERVICE CONDUITS
- EUG-1/VA --- EXISTING UNDERGROUND TELEPHONE AND FIRE ALARM SERVICE CONDUITS
- EOH-1 --- EXISTING OVER HEAD LINE TO BE REMOVED
- NUG --- NEW UNDERGROUND UTILITY SERVICE CONDUITS (SEE DUCT BANK DETAILS)
- NUG --- NEW UNDERGROUND PRIMARY SERVICE CONDUITS
- NUG --- NEW SINGLE LUMINAIRE LIGHT POLE
- NUG --- NEW TWIN LUMINAIRE LIGHT POLE
- NUG --- NEW AND EXISTING UTILITY POLE
- NUG --- NEW 12" X 24" X 24" DEEP HANDHOLE FLUSH WITH GRADE
- EPL --- EXISTING SINGLE LUMINAIRE LIGHT ON UTILITY POLE
- EPL --- EXISTING TWIN LUMINAIRE LIGHT POLE TO BE REMOVED

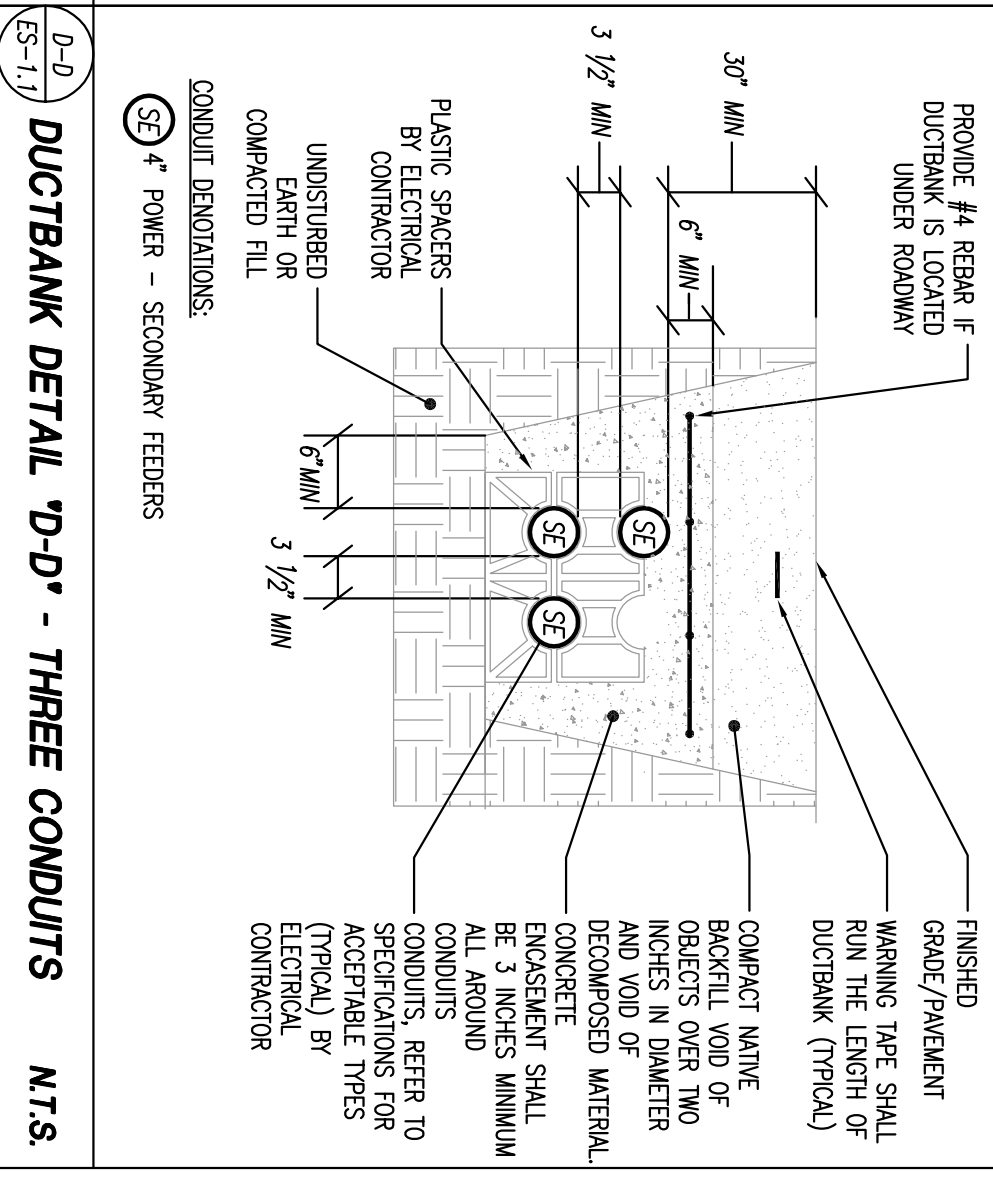
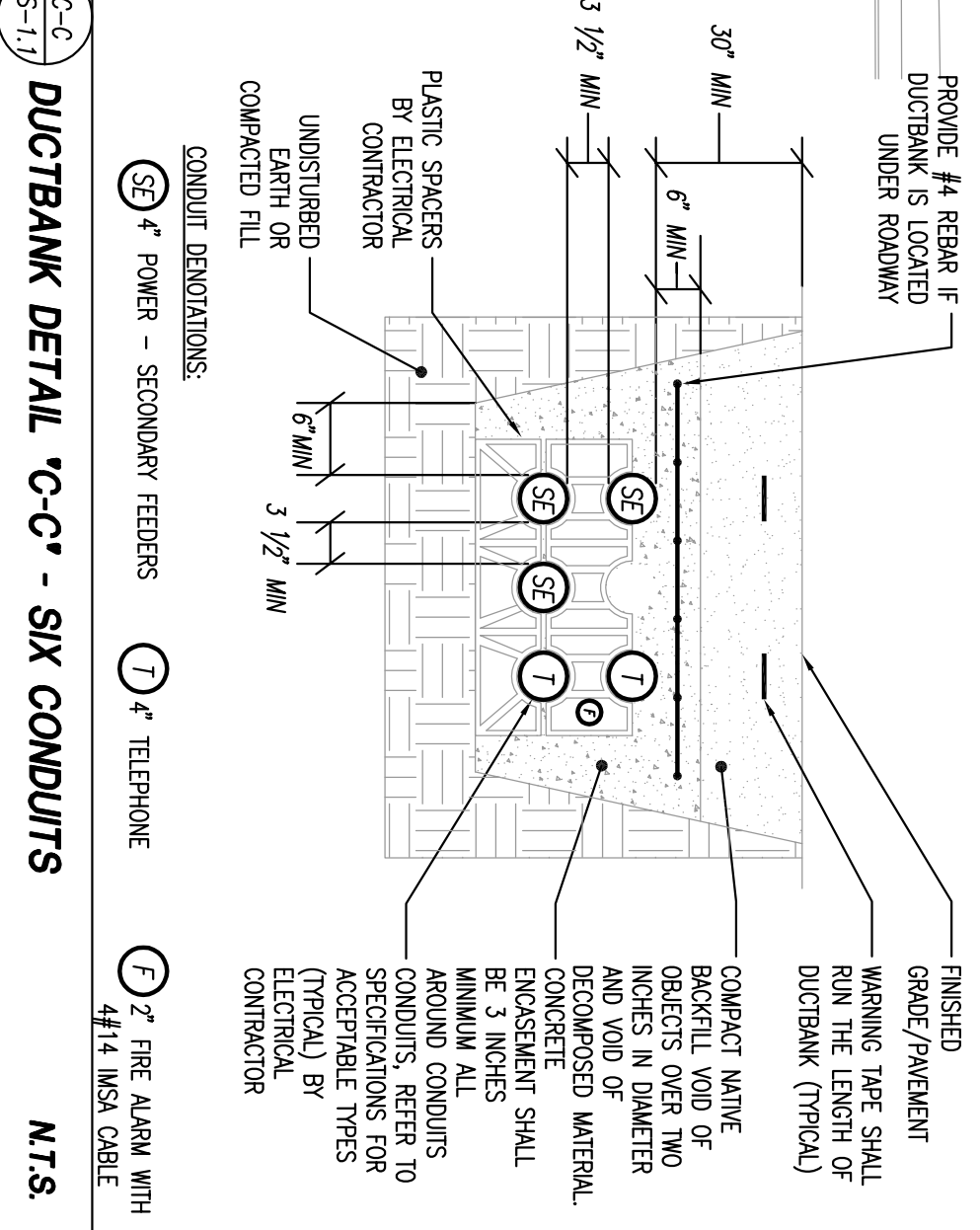
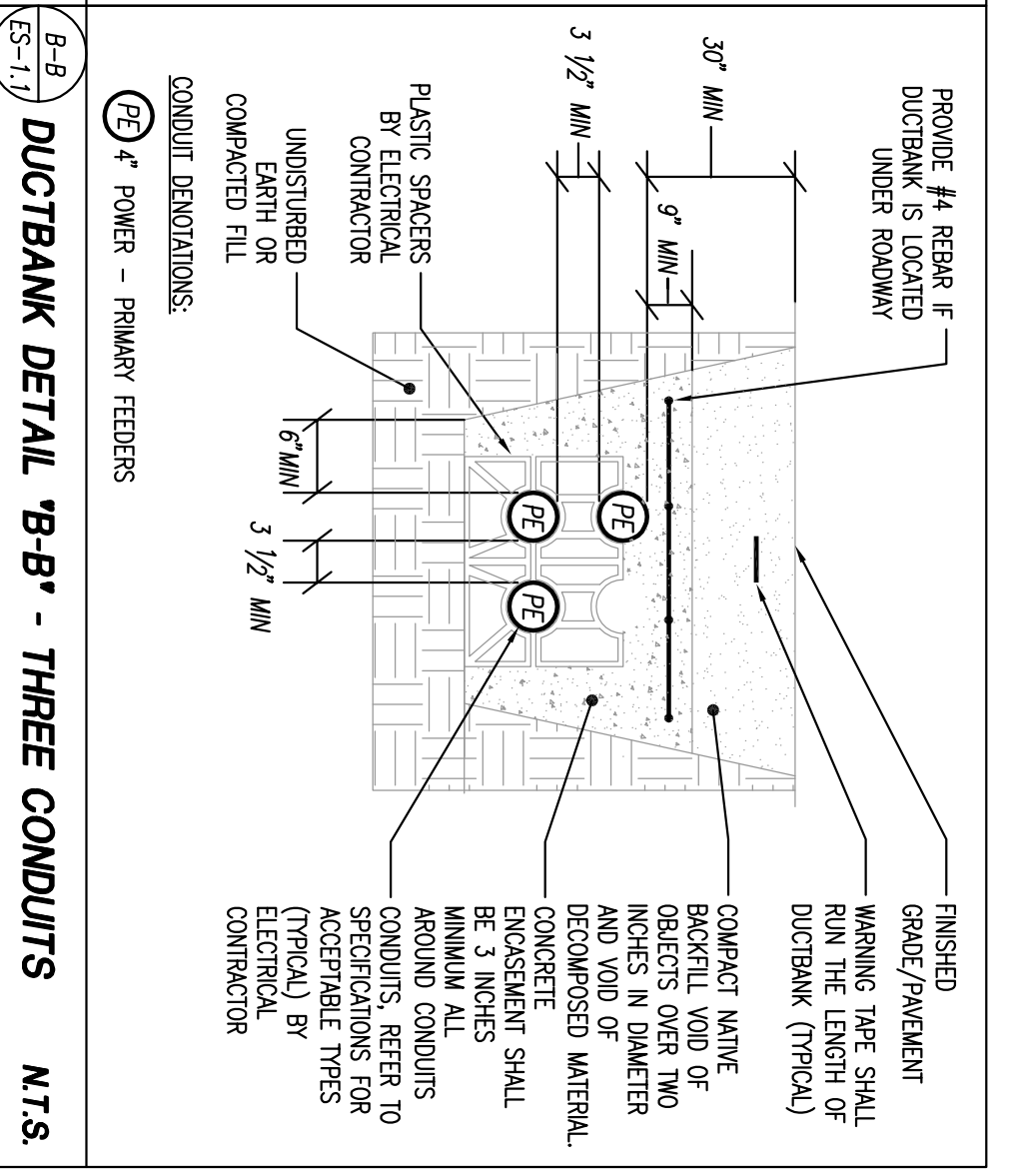
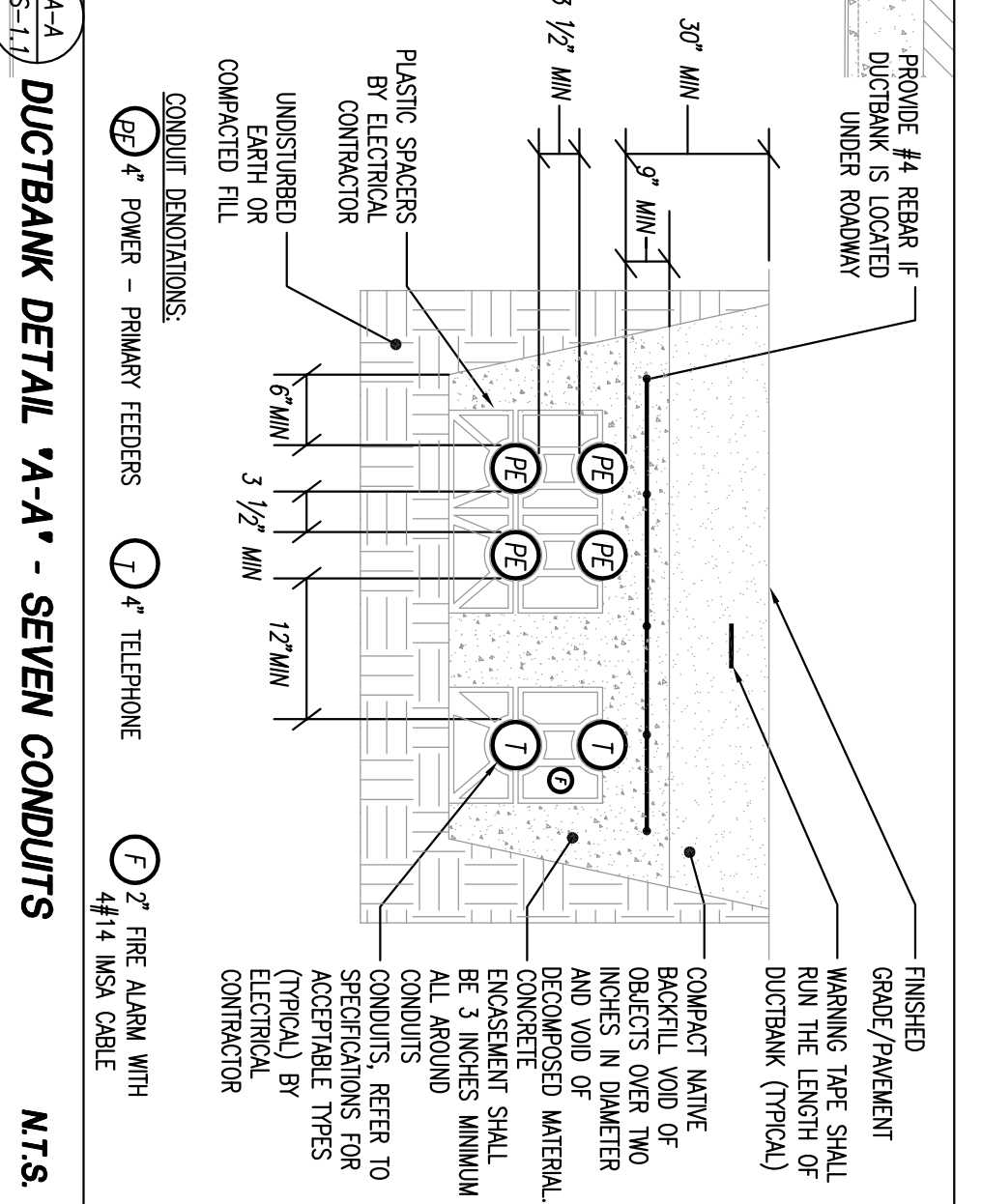
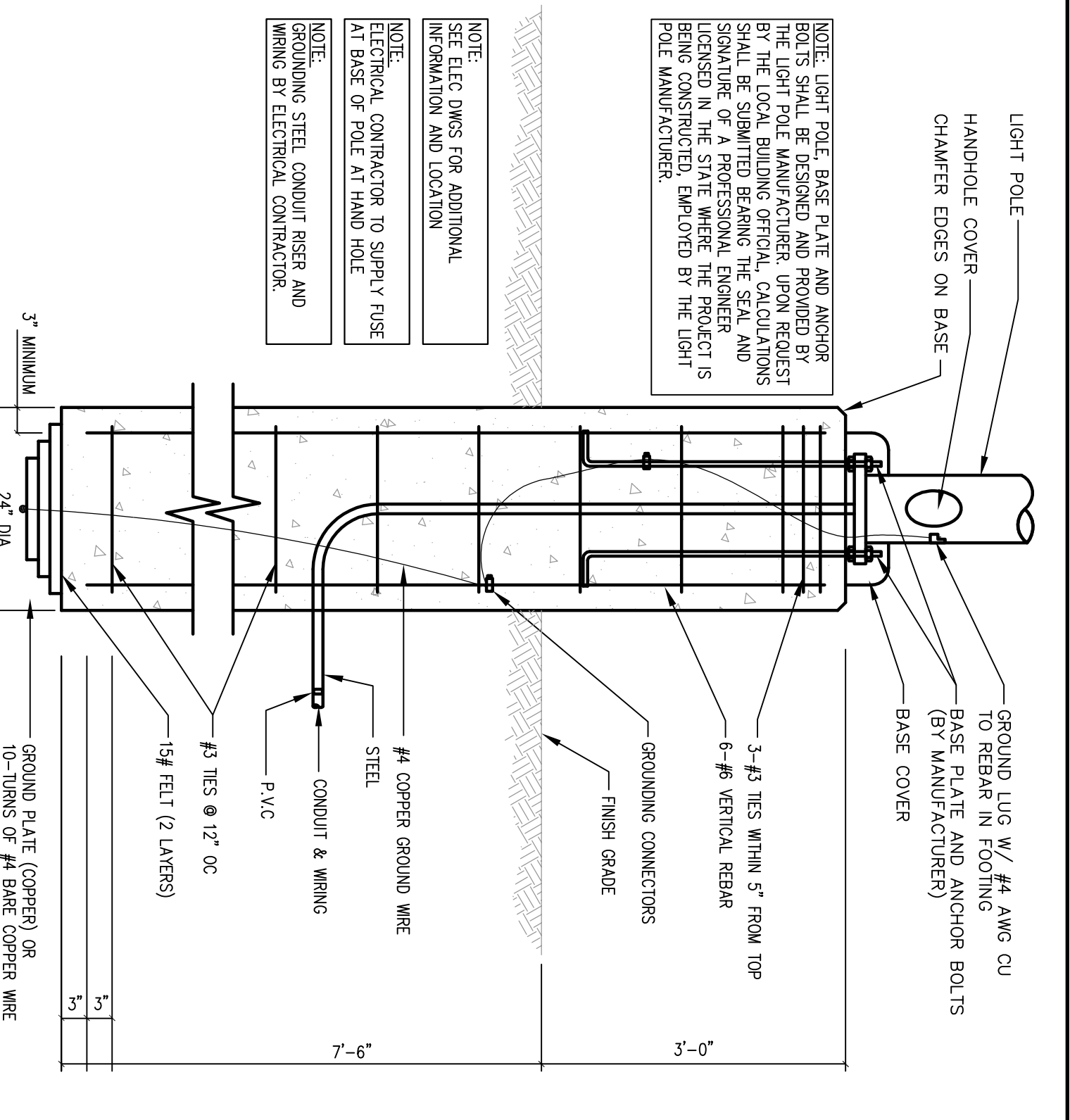
1 SITE PLAN - ELECTRICAL
SCALE: 1"=30'-0"

ELECTRICAL DRAWING LIST

DRAWING NO.	DESCRIPTION
ES-1.1	ELECTRICAL - SITE PLAN
E-1.1	ELECTRICAL - LIGHTING FLOOR PLAN
E-1.2	ELECTRICAL - POWER PLAN & LEGEND
E-1.3	ELECTRICAL - PHARMACY & UPPER FLOOR POWER PLANS
E-1.4	ELECTRICAL - TITLO PLAN
E-1.5	ELECTRICAL - DETAILS & RISER DIAGRAM
E-2.1	ELECTRICAL - SCHEDULES & RISER DIAGRAM
E-2.2	ELECTRICAL - NOTES & S&S DIAGRAM
E-2.3	ELECTRICAL - NOTES & S&S DIAGRAM
E-2.4	ELECTRICAL - THE ALARM FLOOR PLANS
PA-1.2	ELECTRICAL - THE ALARM FLOOR PLANS

- UTILITY POLES SERVICE NOTES:**
- AT EXISTING UTILITY POLE #AUC-1 TERMINATE 2-4" PRIMARY, 1-4" TELEPHONE AND 1-2" FIRE ALARM SERVICE CONDUITS.
 - AT NEW UTILITY POLE #AUC-1A TERMINATE 2-4" PRIMARY AND 1-4" TELEPHONE SERVICE CONDUITS.
 - AT NEW UTILITY POLE #AUC-2 TERMINATE 2-4" PRIMARY AND 1-4" TELEPHONE SERVICE CONDUITS.
 - AT EXISTING UTILITY POLE #AUC-3 TERMINATE 2-4" PRIMARY, 2-4" TELEPHONE AND 2-2" FIRE ALARM SERVICE CONDUITS.
 - ALL UNDERGROUND CONDUIT SIZES AND RISER SHALL BE AS SHOWN ON THIS DRAWING. REFER TO LOCAL ELECTRICAL CODE SECTION 32A FOR FURTHER INFORMATION. THE LABOR FOR WORK AT PAD SHALL BE INSTALLED PER EACH UTILITY EQUIPMENT AND DIRECTION CARRY TO 4" RISER FOR CONDUIT AT POLES.
- NOTE:** TELEPHONE AND FIRE ALARM SERVICE CONDUITS AT POLES SHALL BE INSTALLED BEFORE BEING INSTALLED.

3 SITE LIGHTING BASE DETAIL
SCALE: 3/4"=1'-0"



- GENERAL SERVICE NOTES:**
- ALL NEW PRIMARY ELECTRIC SERVICE WORK TO BE DONE PER C.A.C. HANDBOOK REQUIREMENTS AND DIRECTIONS IN THE FIELD FOR NEW WORK INDICATED.
 - ALL NEW TELEPHONE CONDUIT SERVICE WORK TO BE DONE PER LOCAL TELEPHONE REQUIREMENTS AND DIRECTIONS IN THE FIELD. FINAL WORK TO BE DONE PER LOCAL TELEPHONE COMPANY MEETING.
 - ALL NEW FIRE ALARM SERVICE WIRE AND CONDUIT WORK TO BE DONE PER PORTLAND FIRE DEPARTMENT REQUIREMENTS AND DIRECTIONS IN THE FIELD. FINAL WORK TO BE DONE PER PORTLAND FIRE DEPARTMENT MEETING.
 - NOTE - NEW FIRE ALARM SERVICE CABLE BY ELECTRICAL CONTRACTOR.

- EXISTING OVERHEAD LINES AND UTILITY POLES NOTED TO BE REMOVED BY UTILITY COMPANY:**
- ALL UTILITY COMPANIES AND FIRE DEPARTMENT BACK CHARGES TO BE PAID BY THE COMPANY.
 - ALL UTILITY POWER AND TELEPHONE CABLES BY UTILITY COMPANIES.

Copyright © 2008 by BKA Architects, Inc. The architectural plans, drawings, design, specifications and other arrangements in this sheet are and shall remain the property of BKA Architects, Inc. No part thereof shall be copied, disclosed to others, or used in connection with any work or project, other than the specified project for which they have been prepared and developed, without the express knowledge and written consent of BKA Architects, Inc.

SEAL:

CONSULTANT: R.W. Smart Engineering
142 Crescent Street, Brockton, MA 02302
Phone: 508.683.5003
Fax: 508.683.5004
E-mail: bka@bkaarch.com

DEVELOPER: A & D REALTY, LLC
5 MILITIA DRIVE
LENINGTON, MA 02421

NEW STORE NUMBER: 329
NORRIS PLAZA
97 AUBURN STREET
PORTLAND, MAINE

pharmacy

REVISIONS:

DRAWING BY: HYZ

DATE: 8/31/09

JOB NUMBER: 209017

TITLE: ELECTRICAL SITE PLANS

SHEET NUMBER: ES-1.1

COMMENTS: ISSUED FOR CONSTRUCTION

142 Crescent Street
Brockton, MA 02302

101.508.683.5003
fax: 508.683.5004
e-mail: bka@bkaarch.com

BKA Architects, Inc.
Architecture + Interiors