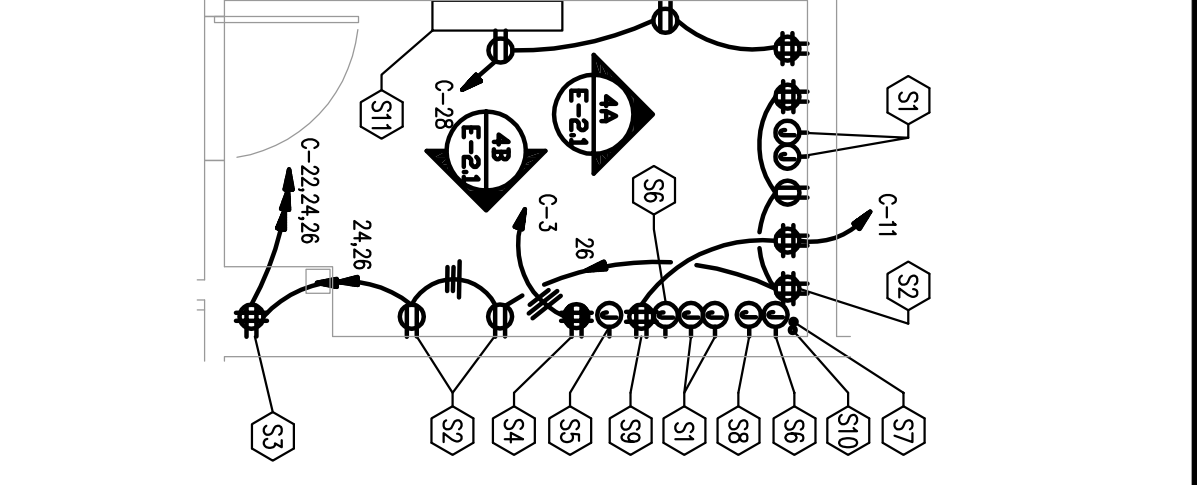
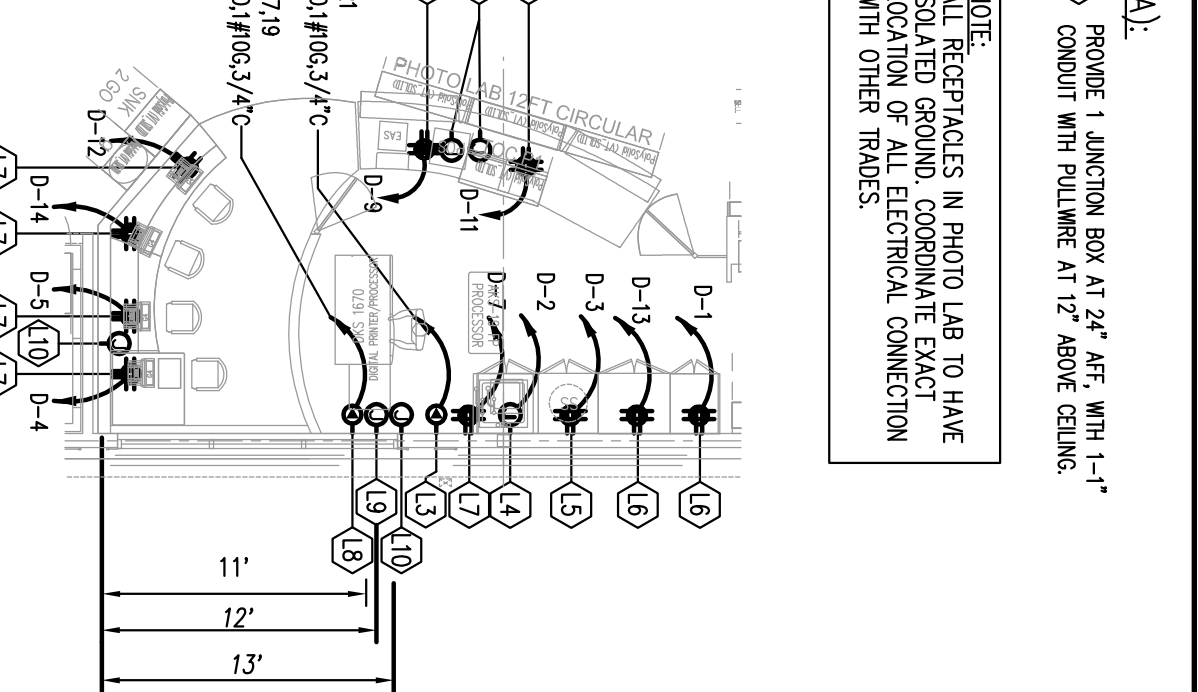


- ELECTRICAL LEGEND NOTES (MANAGER'S):**
- 51 PROVIDE (4) SINGLE GANG REDUCING RINGS AT 1'-8" AFF WITH PULLWIRE. PROVIDE PATHWAY IN EXTERIOR WALL INSULATION FOR LOW VOLTAGE CABLING.
 - 52 INSTALL RECEPTACLES AT 1'-8" AFF UNLESS NOTED OTHERWISE.
 - 53 PROVIDE (1) QUAD RECEPTACLE AT 1'-8" AFF FOR C-11.
 - 54 PROVIDE ISOLATED GROUND RECEPTACLE (1) QUAD FOR POS AS SHOWN ON POS/MAINFRAME. ELEVATION DETAILS. 4/4-21.
 - 55 PROVIDE (1) JUNCTION BOX WITH PULLWIRE TO 6" ABOVE CEILING FOR FUTURE USE.
 - 56 PROVIDE JUNCTION BOX CONFIGURATION FOR MIZUK SYSTEM. RE: DETAIL 4/4-21 FOR MORE INFORMATION.
 - 57 PROVIDE PULL HOPE THRU CONDUIT AT TELEPHONE JACK LOCATIONS. RE: SHEET F-1.
 - 58 PROVIDE JUNCTION BOX WITH PULLWIRE RING FOR LOCATION WITH ARCHITECT. PROVIDE 1" - 1" C. ABOVE CEILING. FROM JUNCTION BOX TO 6" ABOVE CEILING.
 - 59 PROVIDE (1) QUAD RECEPTACLE AT 7'-6" AFF FOR MIZUK SYSTEM. RE: DETAIL 4/4-21.
 - 510 PROVIDE (1) 2" CONDUIT WITH 200 JB PULLWIRE. RE: SHEET ES-11.
 - 511 PROVIDE 2#12/#5G, 3/4" C. FROM CU-2 TO AHU-1. INSTALL PER MFR GUIDELINES.



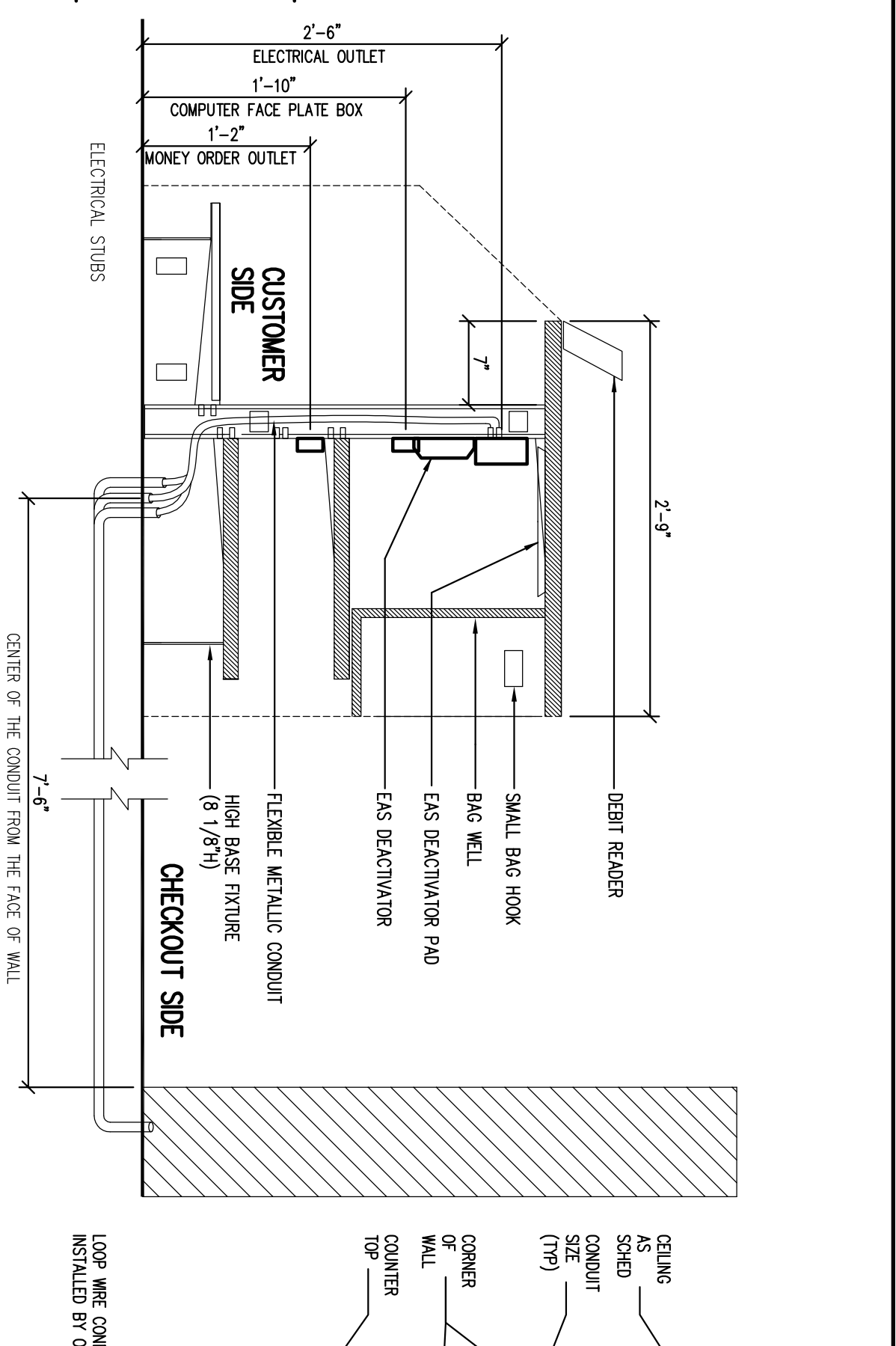
- ELECTRICAL LEGEND NOTES (PHOTOLAB AREA):**
- 11 PROVIDE 3" - 1" C. WITH PULLWIRE, STUB UP UNDER PROVIDE 2" LOW VOLTAGE CONDUITS AND 1" POWER CONDUIT WITH TAGGED AND LABELED PULL WIRE.
 - 12 PROVIDE ONE (1) NEMA 5-15R RECEPTACLE WITH ISOLATED GROUND FLUSH MOUNTED 24" AFF TO BOTTOM OF BOX @ OVERHUNG.
 - 13 PROVIDE 12V, 20 AMP RECEPTACLE WITH ISOLATED GROUND TO MATCH FLM. LOCATE 15'-0" FROM PHOTO LAB TO BOTTOM OF BOX. LOCATE 15'-0" FROM PHOTO LAB TO PANEL 'D' AS INDICATED.
 - 14 PROVIDE JUNCTION BOX FOR WHEN HEATER FLUSH RECEPTACLE IS INSTALLED. PROVIDE 1" - 1" C. ABOVE CEILING WITH DIVISION 15. PROVIDE 1" - 1" C. ABOVE CEILING WITH DIVISION 15.
 - 15 PROVIDE ONE (1) NEMA 5-15R QUAD RECEPTACLE WITH ISOLATED GROUND FLUSH MOUNTED ABOVE COUNTER. COORDINATE EXACT LOCATION AND MOUNTING HEIGHT WITH MILLWORK CONTRACTOR.
 - 16 PROVIDE ONE (1) NEMA 5-15R QUAD RECEPTACLE WITH ISOLATED GROUND FLUSH MOUNTED 24" AFF TO BOTTOM OF BOX.
 - 17 PROVIDE ONE (1) NEMA 5-15R QUAD RECEPTACLE WITH ISOLATED GROUND FLUSH MOUNTED 24" AFF TO BOTTOM OF BOX. LOCATE 11'-0" FROM PHOTO LAB TO BOTTOM OF BOX. LOCATE 11'-0" FROM PHOTO LAB TO PANEL 'D' AS INDICATED.
 - 18 PROVIDE 20 AMP, 2 POLE, 3 WIRE GROUNDING RECEPTACLE TO MATCH FRONT PROCESSOR MOUNT AT PHOTO LAB SIDE OF FINISH WALL. PROVIDE 2 #10, 1 #10, 3/4" O TO PANEL 'D' AS INDICATED.
 - 19 PROVIDE 1 QUAD BOX REDUCING RING AT 20" AFF, 12'-0" FROM PHOTO LAB SIDE OF FINISH WALL. WALL WITH 1" - 1" CONDUIT WITH PULLWIRE.



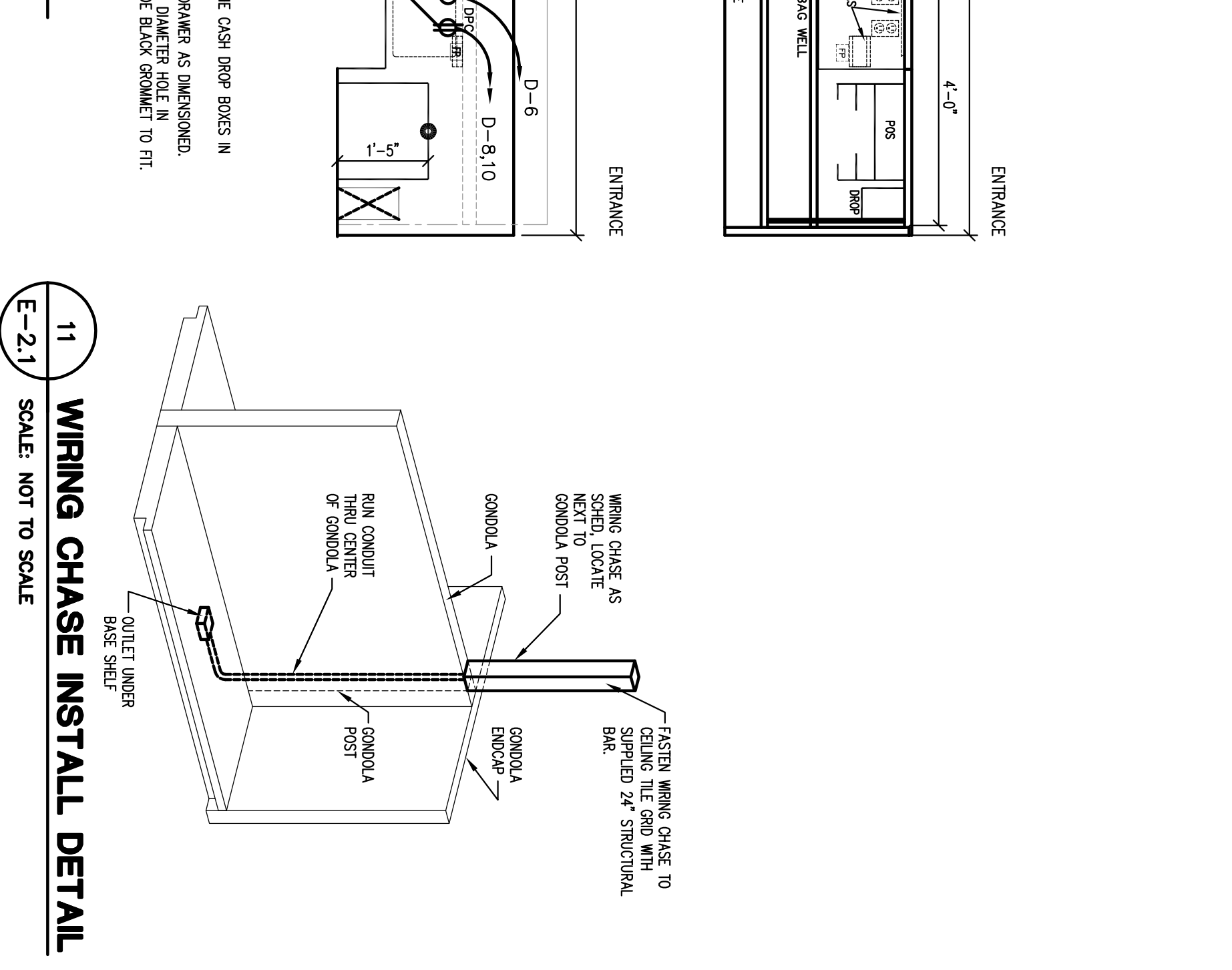
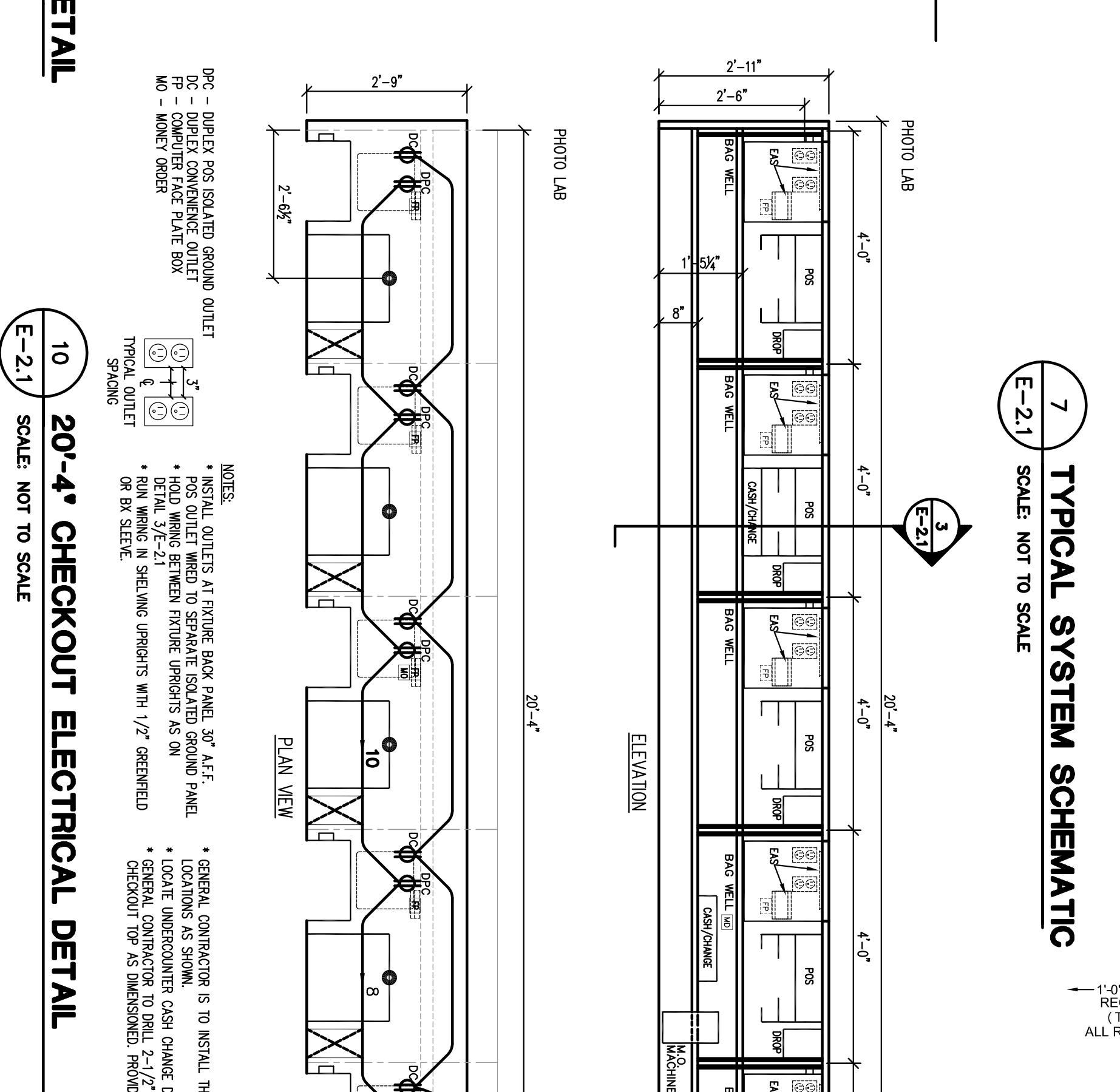
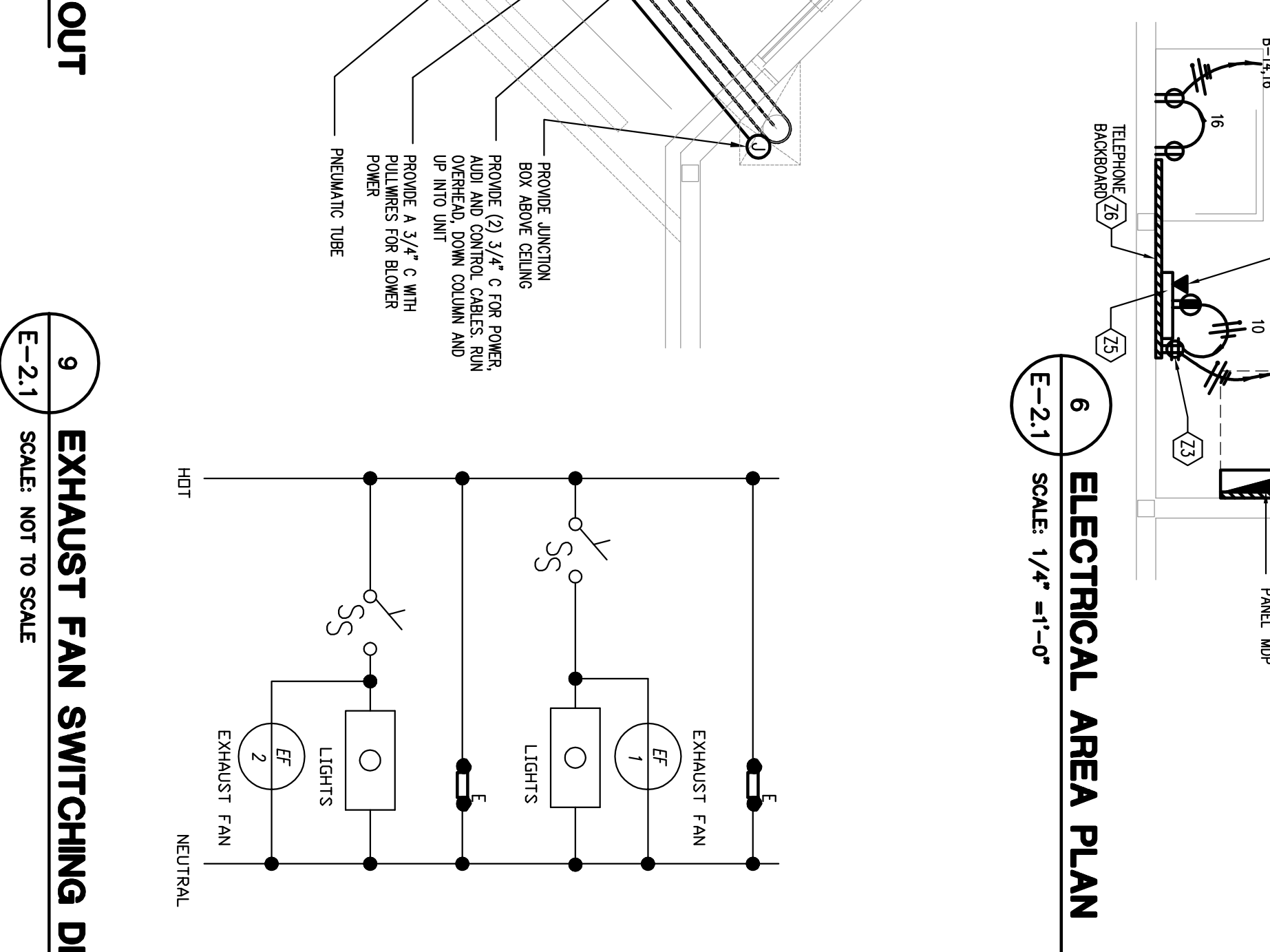
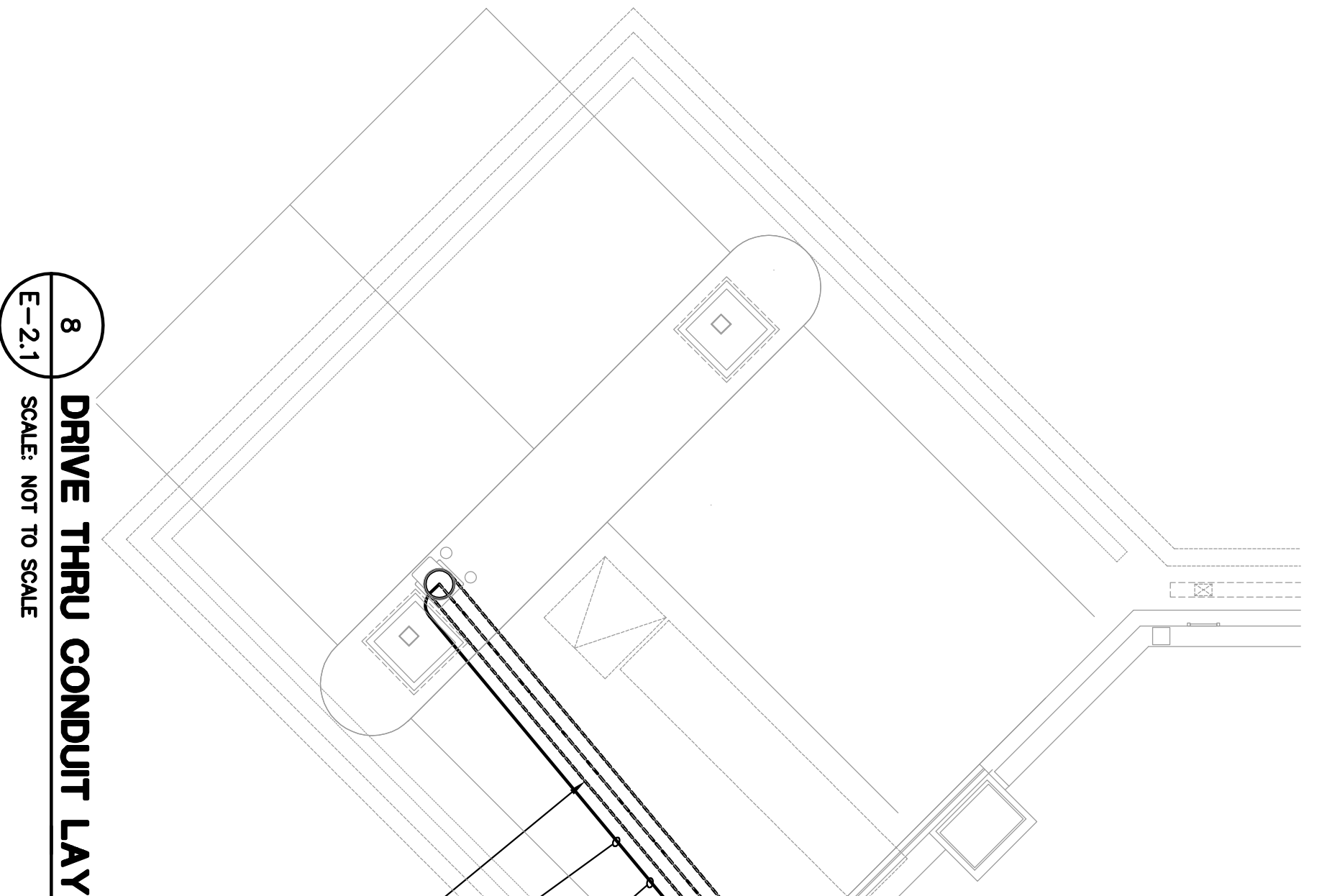
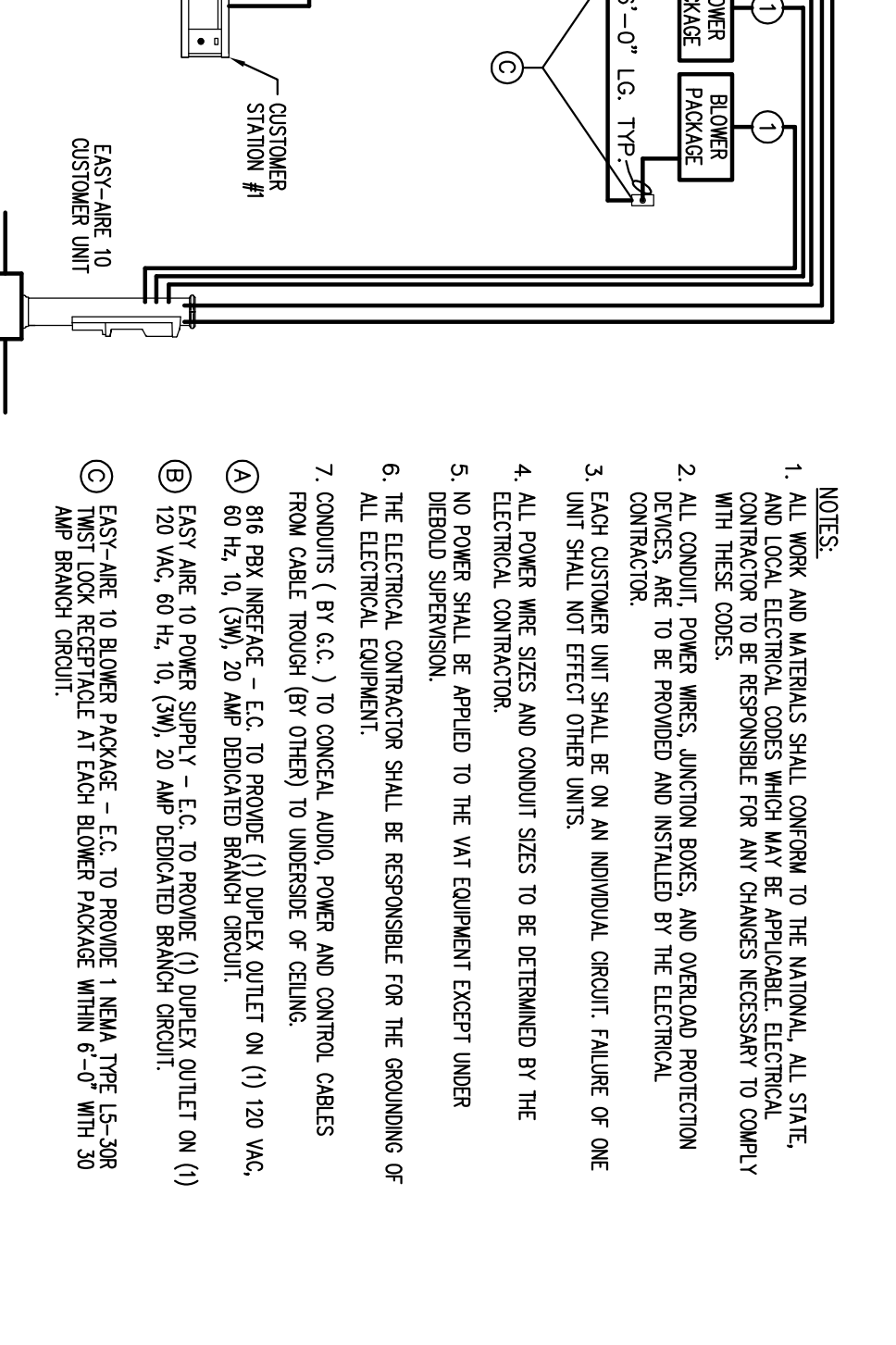
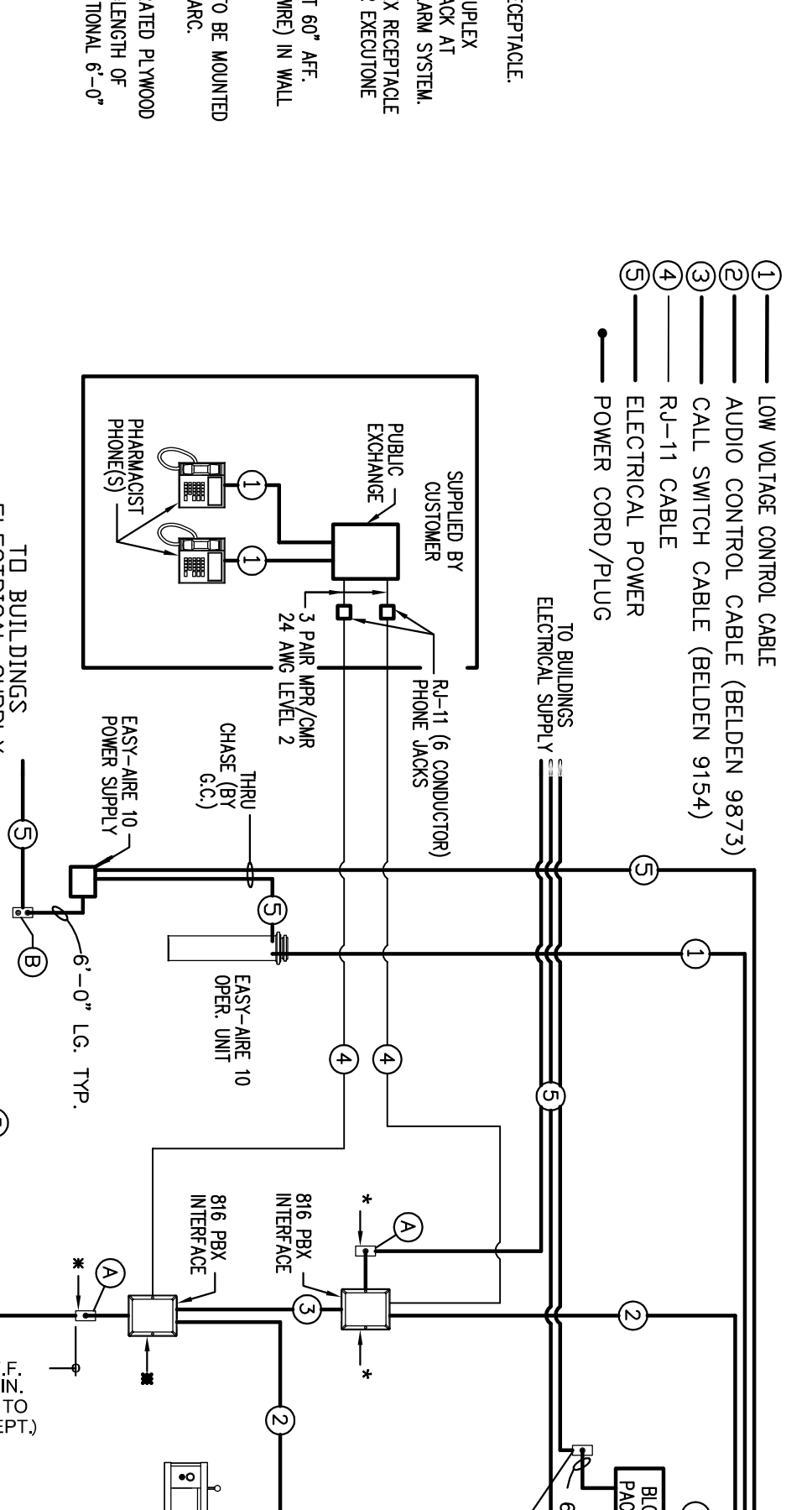
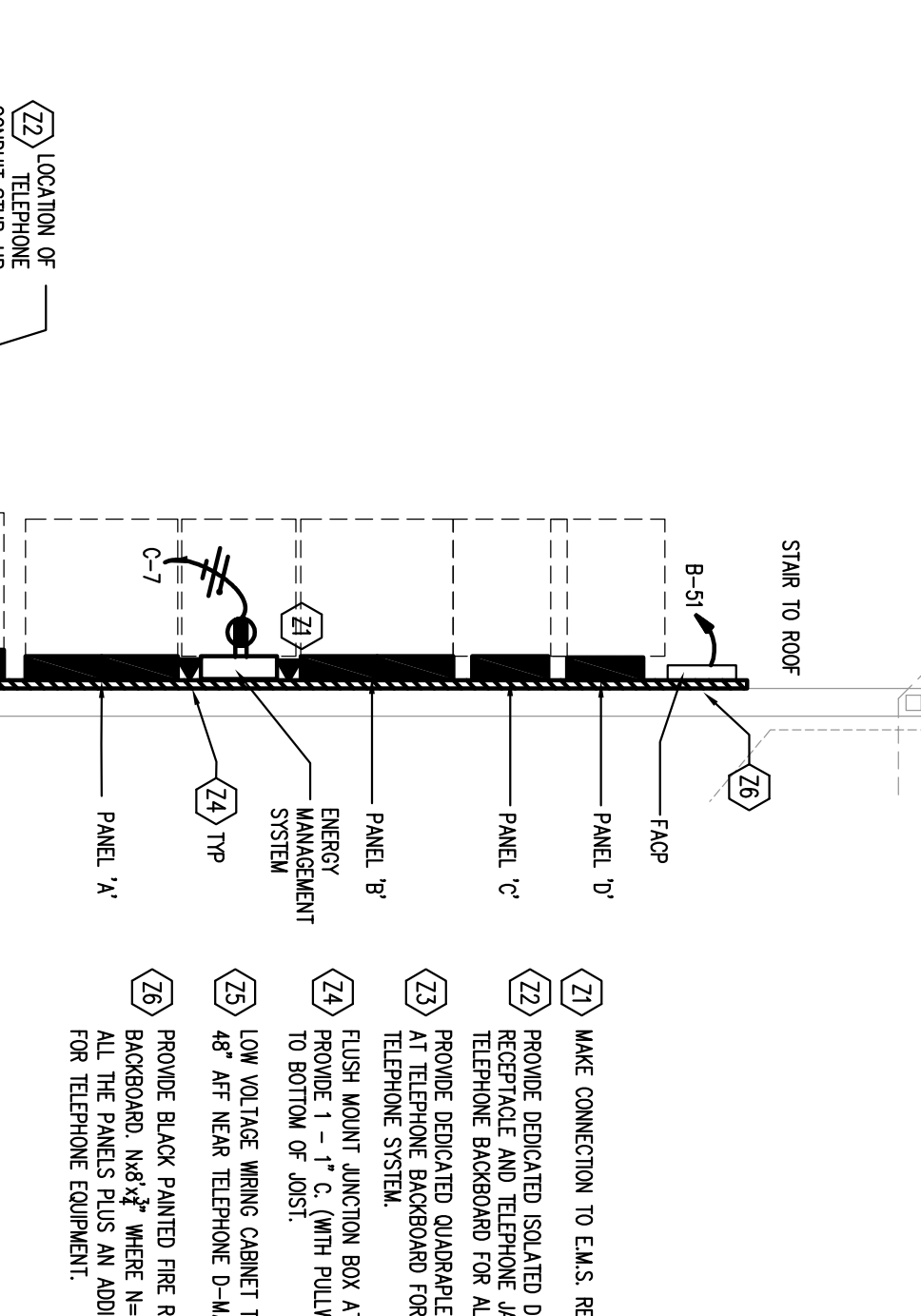
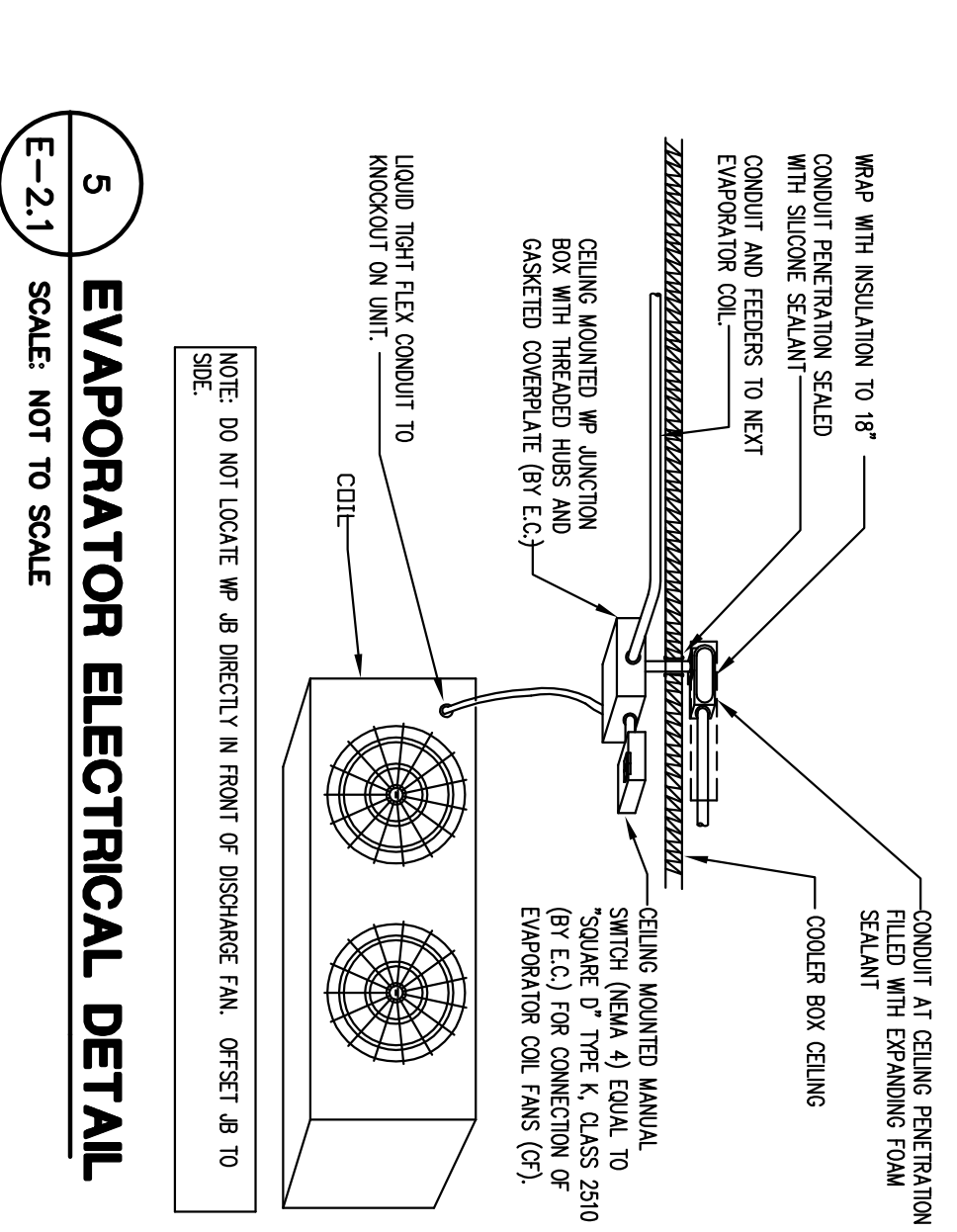
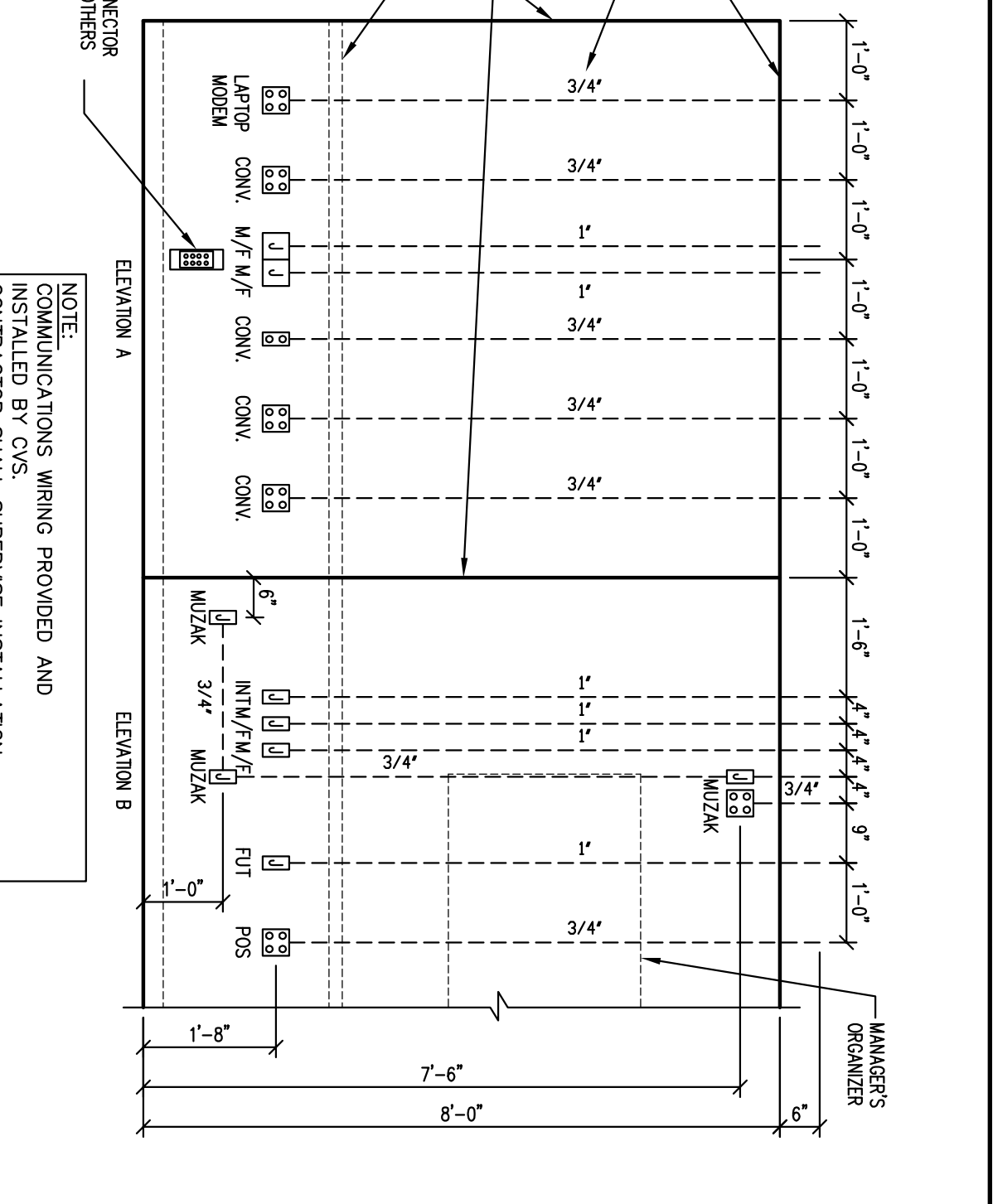
1 MANAGER'S FLOOR PLAN - POWER
E-2-1 SCALE: NOT TO SCALE

2 PHOTO LAB POWER PLAN
E-2-1 SCALE: NOT TO SCALE

3 20'-4" COUNTER TOP DETAIL
E-2-1 SCALE: NOT TO SCALE PHOTO LAB COUNTER SIMILAR - SEE PLAN



4 POS/MAINFRAME ELEVATION
E-2-1 SCALE: NOT TO SCALE



8 DRIVE THRU CONDUIT LAYOUT E-2-1 SCALE: NOT TO SCALE

9 EXHAUST FAN SWITCHING DETAIL E-2-1 SCALE: NOT TO SCALE

10 20'-4" CHECKOUT ELECTRICAL DETAIL E-2-1 SCALE: NOT TO SCALE

11 WIRING CHASE INSTALL DETAIL E-2-1 SCALE: NOT TO SCALE

CVS/pharmacy

NEW
STORE NUMBER: 329
NORTHRAE PLAZA
91 AUBURN STREET
PORTLAND, MAINE

DEVELOPER:
A & D REALTY, LLC
5 MILITIA DRIVE
LENINGTON, MA 02421

REVISIONS:

DRAWING BY: HYZ
DATE: 8/31/09
JOB NUMBER: 209017
TITLE: ELECTRICAL DETAILS
SHEET NUMBER: E-2.1

CONSULTANT:
R. W. Smart Engineering
142 Crescent Street
Brockton, MA 02302
Tel: 508.583.5008
Fax: 508.584.2914
e-mail: bkrsk@rwa.com

SEAL:

COMMENTS:
ISSUED FOR CONSTRUCTION