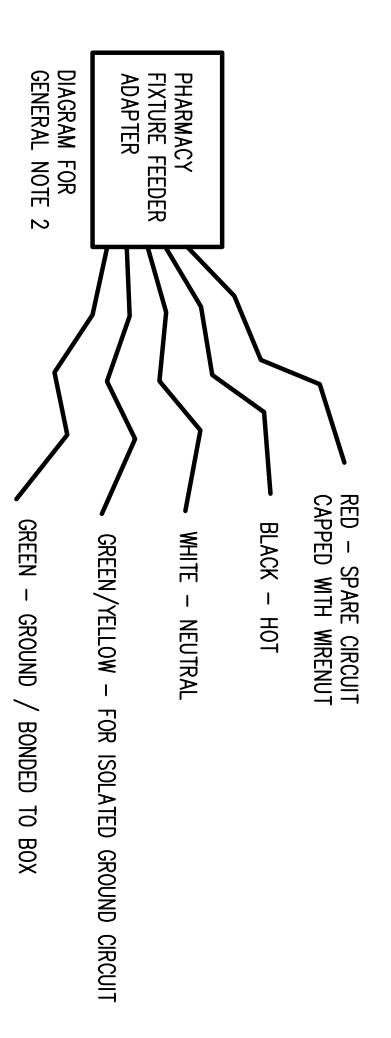


ELECTRICAL LEGEND NOTES (POWER PLAN):

- (P1) PROVIDE JUNCTION BOX MOUNTED ABOVE CEILING WITH FEEDER ADAPTER FOR CONNECTION TO CENTER ISLAND WIRING CHASE.
- (P2) PROVIDE JUNCTION BOX MOUNTED ABOVE CEILING WITH FEEDER ADAPTER FOR CONNECTION TO CENTER ISLAND CONNECTION TO VENDOR PROVIDED CABINETS. RE: 5/E-1.3.
- (P3) PROVIDE (2) DUREX OUTLET SHACKLES, ONE AT 1'-3" AFF AND ONE 1'-9" AFF FOR 816-890 NIBERFACE BOX WIRING CHASE.
- (P4) PROVIDE JUNCTION BOX MOUNTED ABOVE CEILING WITH FEEDER ADAPTER FOR CONNECTION TO PULL COILS WIRING CHASE.
- (P5) PROVIDE JUNCTION BOX ABOVE CEILING FOR CONNECTION TO ROLL-UP DOOR, COORDINATE WITH EQUIPMENT AND WIRE CONTROLS COMPLETE.
- (P6) MOUNT ROLL-UP DOOR CONTROLS 48" AFF AND WIRE COMPLETE. PROVIDE THREE SWITCHES, ONE FOR EACH ELECTRICAL ROLL-UP DOOR.
- (P7) PROVIDE 3 - 3/4" CONDUIT FOR PNEUMATIC TUBE CONTROLS AND POWER AT 4" AFF (UON). REIMBURSE THRU CONDUIT LAYOUT ON E-2.1.
- (P8) PROVIDE JUNCTION BOX MOUNTED AT 8" AFF (UON) WITH A CLEAR DISTRIBUTION CABLE CONNECTOR FOR CONNECTION TO VENDOR PROVIDED CABINETS. RE: 5/E-1.3.
- (P9) PROVIDE 3/4" CONDUITS FOR UPS CIRCUITRY, HARD WIRED IN THE FIELD TO ACCEPT UNWIB CABLES. RE: 4/E-1.3 CONNECTIONS.
- (P10) PROVIDE 1-1" CONDUIT AT 8" AFF (UON) WITH A FURUTE DISTRIBUTION CABLE CONNECTOR FOR CONNECTION TO VENDOR PROVIDED CABINETS. RE: 5/E-1.3.
- (P11) PROVIDE (3) JUNCTION BOXES AT 12" AFF (UON) W/ 2 - 1" CONDUITS WITH PULL STRING TO ABOVE PHARMACY CEILING.
- (P12) PROVIDE DUREX OUTLET AT 12" AFF FOR ESTS ARE TO POWER SUPPLY.
- (P13) PROVIDE NEUA US-336 "NIST" LOOK RECEPTACLE IN CLOSET ABOVE DRIVE-UP ISLAND FOR EAST ARE TO BLOWER PACKAGE.
- (P14) WALL MOUNT DUREX RECEPTACLE AND JUNCTION BOX 84" AFF WITH 3/4" C TO 6" ABOVE CEILING FOR FUTURE CAVY OUTLET.
- (P15) REIMBURSE COOLER OUTLET. PROVIDE DUREX OUTLET MOUNTED 18" AFF.
- (P16) PROVIDE DUREX AT 18" AFF FOR BLOOD PRESSURE MACHINE AND FUTURE CUSTOMER ACCESS CONDUIT.
- (P17) PROVIDE JUNCTION BOX AND CONDUIT FOR VERTICAL LEFT DISTRIBUTION STATION COORDINATE WITH EQUIPMENT INSULATOR PRIOR TO ANY WORK.
- (P18) PROVIDE JUNCTION BOX AND CONDUIT FOR VERTICAL LEFT MOTOR CONTROL BOX COORDINATE WITH EQUIPMENT INSULATOR PRIOR TO ANY WORK.
- (P19) PROVIDE 30A/2P/NE DISCONNECT SWITCH. CONNECT TO VERTICAL LEFT (208V/2P, 5 HP) COORDINATE EXACT LOCATION AND ELECTRICAL REQUIREMENTS WITH EQUIPMENT INSTALLER PRIOR TO ANY WORK.



SYMBOL LEGEND (THIS SHEET ONLY)

| SYMBOL | DESCRIPTION | WIRING HEIGHT |
|--------|---|---------------|
| ○ | CABLE STUD AT CHECKOUT | |
| ○ | DUREX RECEPTACLE OUTLET | 18" A.F.F. |
| ○ | GROUND FAULT CIRCUTY INTERRUPTER THE RECEPTACLE | 18" A.F.F. |
| ○ | SPECIAL RECEPTACLE OUTLET AS NOTED | |
| △ | SPECIAL OUTLET FOR USE WITH 816-890 AUDIO STEEL WIRE* LOCATION AS NOTED | 18" A.F.F. |
| △ | DATA | |
| (XX) | REFER TO ELECTRICAL NOTES | |

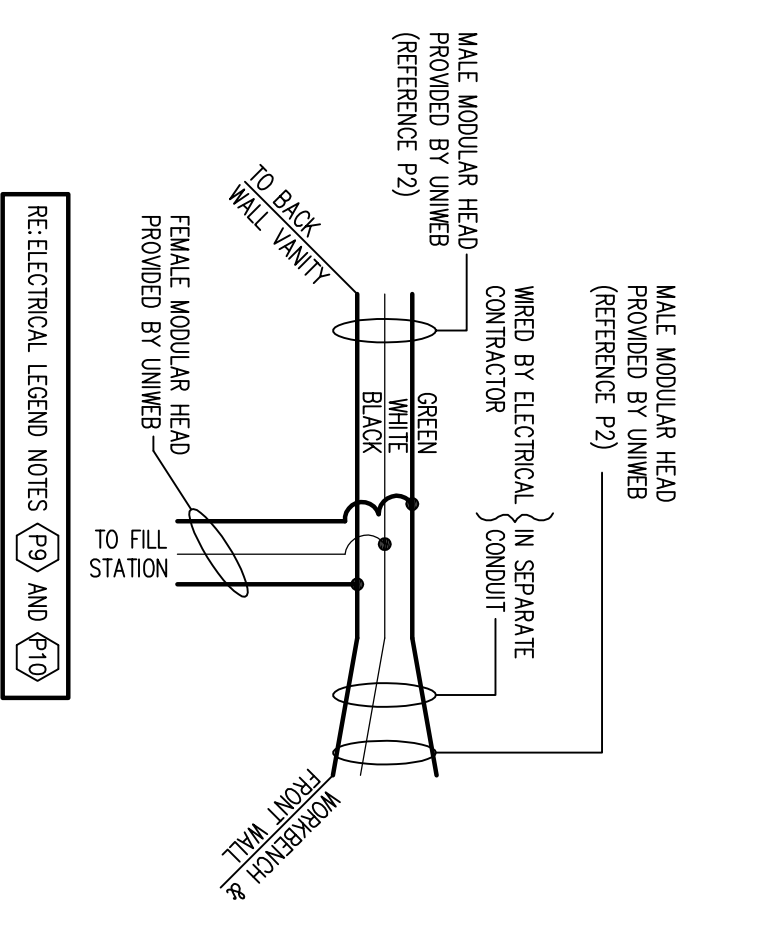
LOOKING HEAVY IS FOR PRE-FABRICATED CONNECTIONS TO BE MADE BY THE CONTRACTOR.

NOTE: UNLESS OTHERWISE NOTED ALL OUTLETS & J-BOXES TO BE LOCATED 18" AFF. RECEPTACLES TO BE LOCATED #282-50 (TYP) FROM ELECTRICAL NOTES TO VERIFY CONDITIONS PER ELECTRICAL LEGEND.

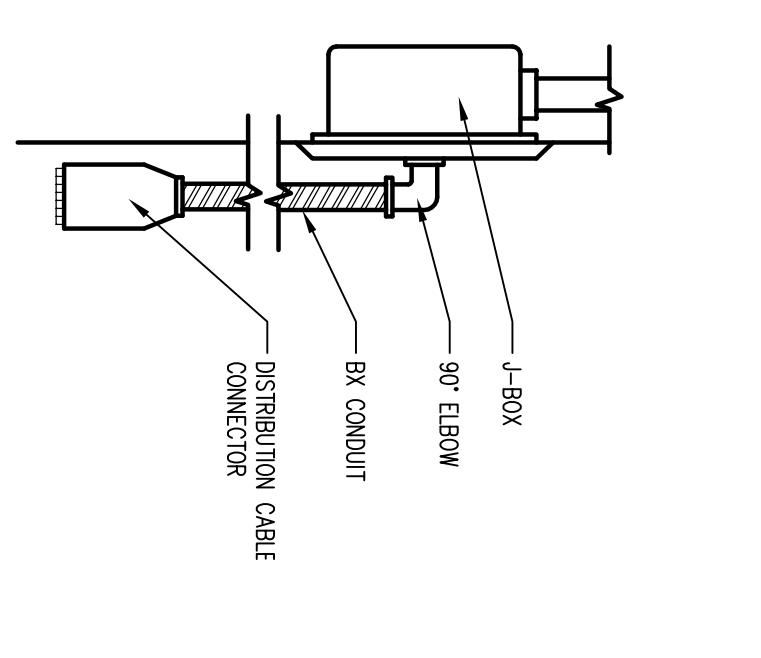
GENERAL NOTES (PHARMACY AREA):

1. INSTALL ALL TELEPHONE OUTLETS AT 4'-6" AFF. UNLESS OTHERWISE NOTED.
2. PHARMACY FIXTURES COME WIRED PER THIS DRAWING.
3. PROVIDE FUTURE USE. JUNCTION BOXES WITH BLANK CONDUITS.
4. ROUTE ELECTRICAL WIRE AND REIMBURSE CONDUITS THROUGH PRE-FABRICATED CONNECTIONS THROUGH THE CEILING. PROVIDE CONDUITS AND DRIP PANELS. DO NOT DRILL THROUGH PANELS FOR ANY REASON.

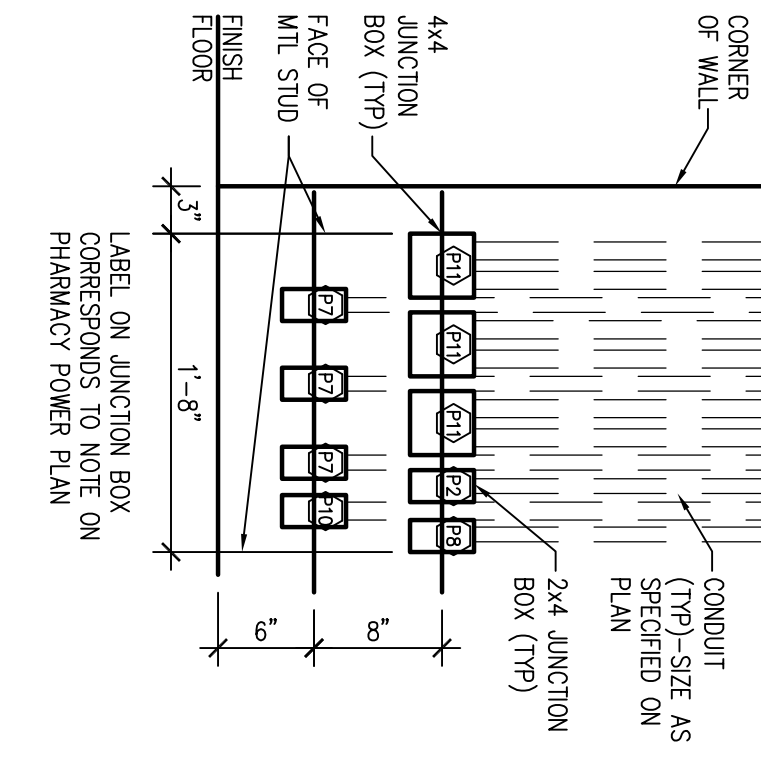
4 WIRING DETAIL
SCALE: NTS



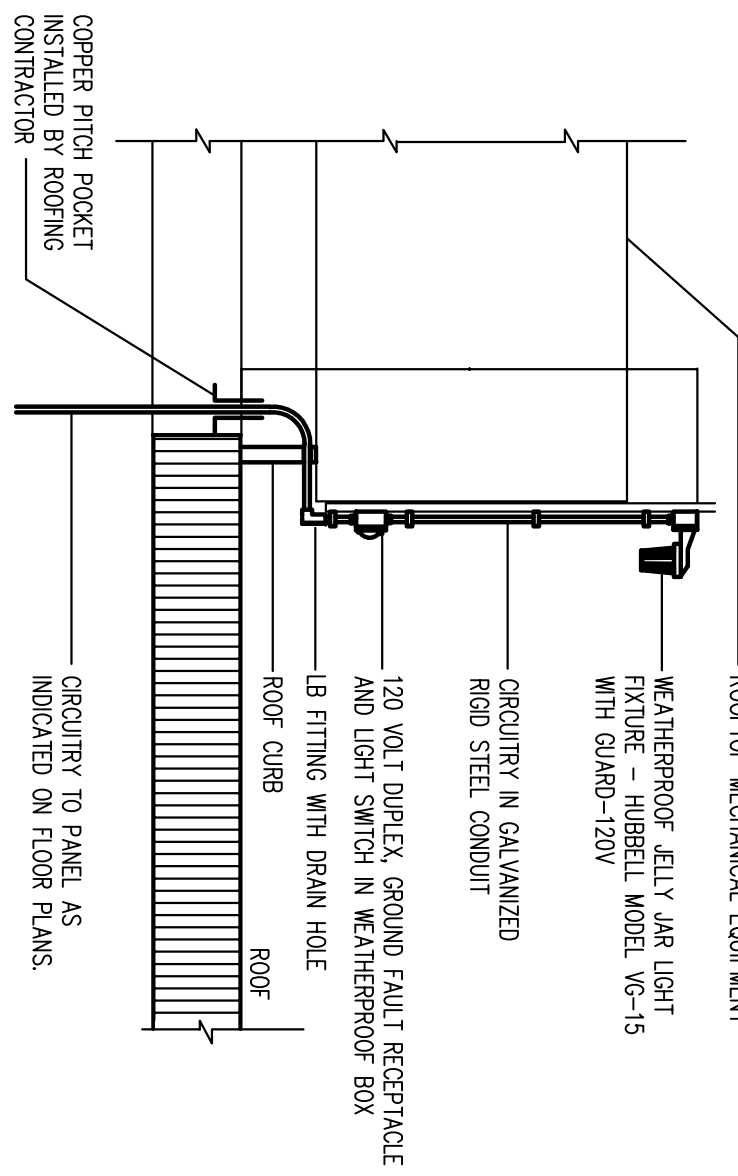
5 MILLWORK ELEC DETAIL
SCALE: NTS



6 JUNCTION BOX ELEVATION
SCALE: 1" = 1'-0"



7 TYPICAL ROOFTOP EQUIPMENT RECEPTACLE AND LIGHTING DETAIL
SCALE: NTS



- MODULES WIRING CONNECTORS**
- COLOR LEGEND**
- ORANGE - ISOLATED GROUND
 - PURPLE - CONTROL POWER
 - CLEAR - GENERAL PURPOSE
- LEGEND**
- BLANK
 - ▽ DATA/COMMUNICATION (COAXIALS)
 - △ QUAD POWER BOX
 - CLEAN (ISOLATED)
 - OR CLEAN RED (ISOLATED)
 - D DIRTY (REGULAR)
 - UPS CIRCUIT
 - REFRIGERATOR DIRTY (REGULAR)
 - PASS-THRU BOX
 - UPS ASSEMBLY (UNWIB WIRING)
 - UPS ASSEMBLY (UNWIB WIRING)
 - GROUND FAULT CIRCUIT INTERRUPTER
- CONTRACTOR RESPONSIBLE FOR "PLUGGING" ALL FIXTURE SECTIONS TOGETHER.**
- OUTLETS IN THIS PLAN COME INSTALLED IN FIXTURES AND REIMBURSE CONDUIT AND PIPESSES ONLY. DO NOT INCLUDE IN BID.**

"J" BOX AND WHIP PROVIDED BY UNWIB INSTALLED BY GC

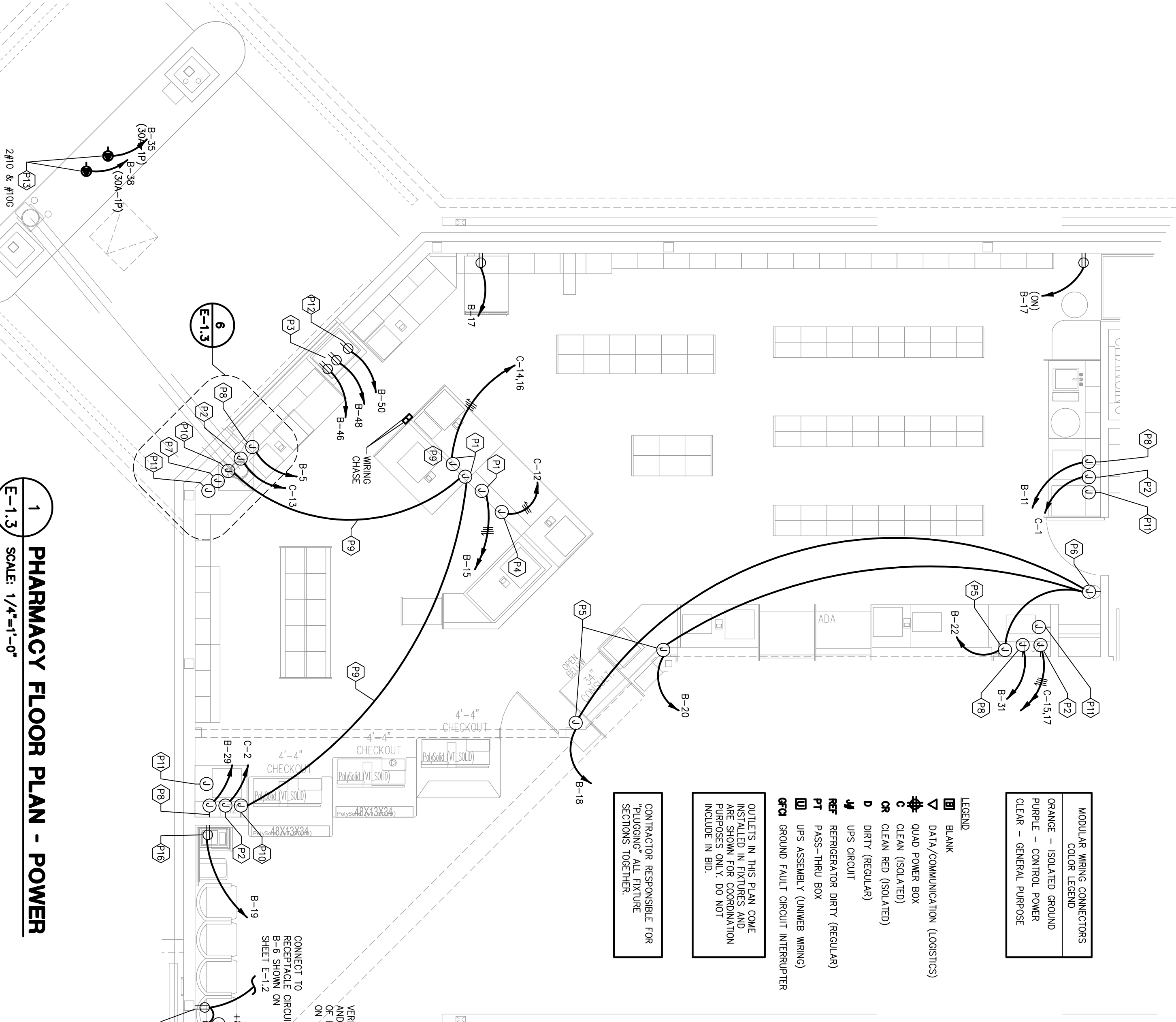
"J" BOX AND WHIP PROVIDED BY UNWIB INSTALLED BY GC

UNWIB, INC.
222 S. Penonide Ave.
Corona, CA 92679
PH: (951) 279-7999
FAX: (951) 279-8986

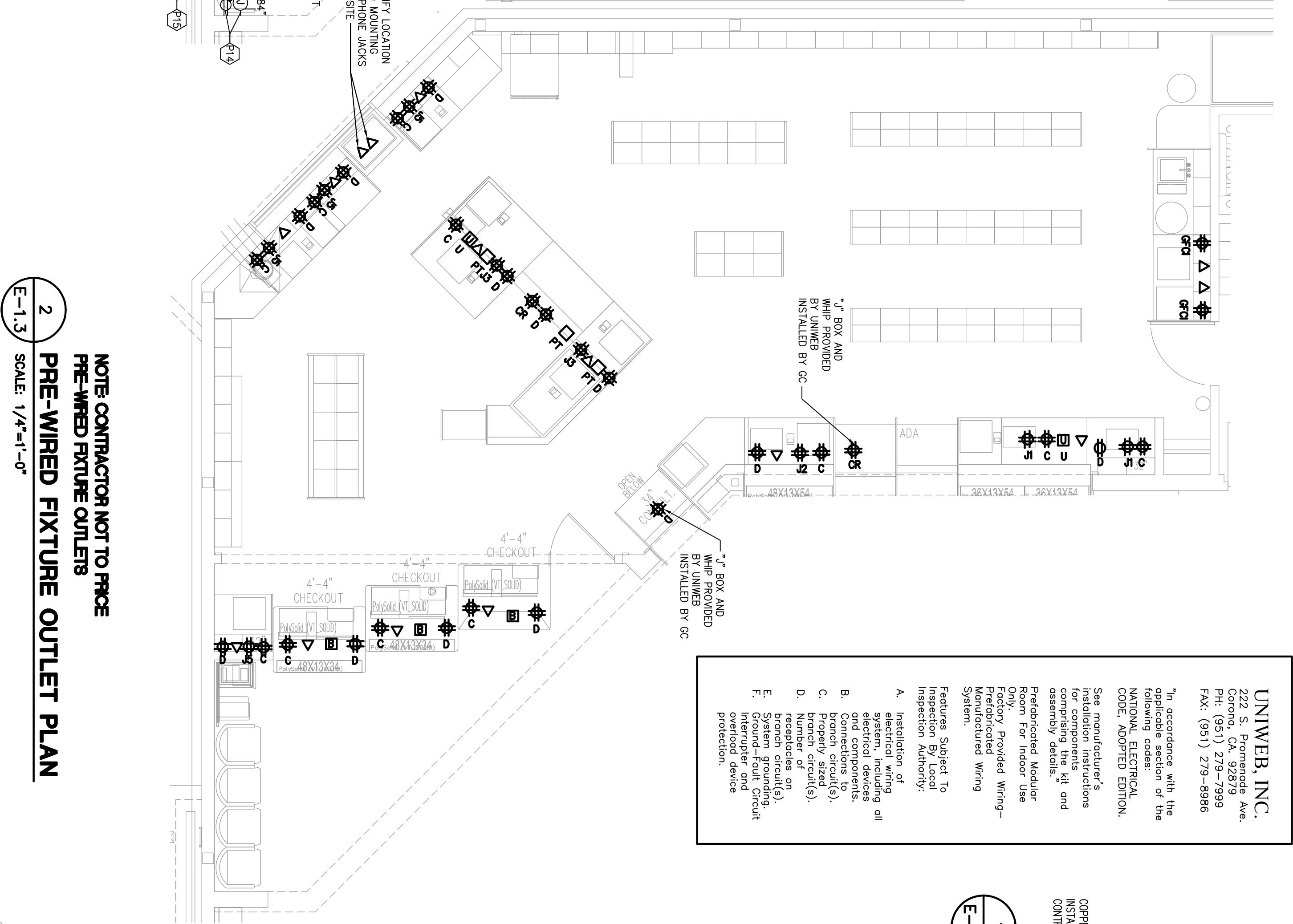
"In accordance with the following codes:
NATIONAL ELECTRICAL CODE, ADAPTED EDITION.
See manufacturer's installation instructions for proper installation and assembly details."
Prefabricated Modular Room For Indoor Use
Factory Provided Wiring-Premanufactured Wiring System.

Features Subject to:
A. Installation of electrical wiring system, including all electrical conductors and devices.
B. Connections to branch circuit(s).
C. Number of branch circuit(s).
D. System grounding.
E. System grounding, interconnect and overvoltage protection.

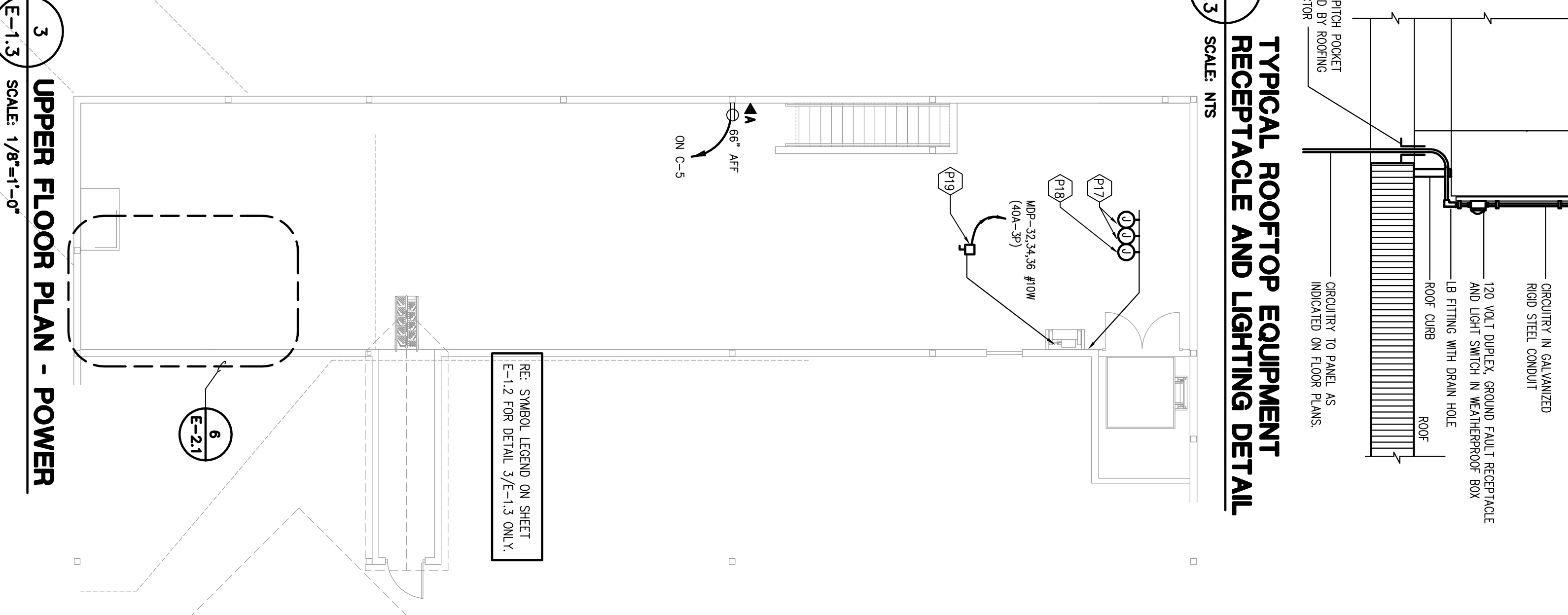
1 PHARMACY FLOOR PLAN - POWER
SCALE: 1/4"=1'-0"



2 PRE-WIRED FIXTURE OUTLET PLAN
SCALE: 1/4"=1'-0"



3 UPPER FLOOR PLAN - POWER
SCALE: 1/8"=1'-0"



Copyright © 2008 by BKA Architects, Inc. The architectural plans, drawings, design, specifications and other arrangements in this sheet are and shall remain the property of BKA Architects, Inc. No part thereof shall be copied, disclosed to others, or used in connection with any work or project, other than the specified project for which they have been prepared and developed, without the express knowledge and written consent of BKA Architects, Inc.

DEVELOPER:
A & D REALTY, LLC
5 MILITIA DRIVE
LEWINGTON, MA 02421

NEW STORE NUMBER: 329
NORTHGATE PLAZA
91 AUBURN STREET
PORTLAND, MAINE

CONSULTANT:
R. W. Smart Engineering
1100 S. Industrial Avenue, Springfield, MA 01103
Phone: (413) 252-2277 Fax: (413) 252-2815
www.rwsma.com

SEAL:

CONTRACTOR:
CVS/pharmacy

DATE: 8/31/09
JOB NUMBER: 209017
TITLE: PHARMACY AND UPPER FLOOR POWER PLANS
SHEET NUMBER: E-1.3

COMMENTS:
ISSUED FOR CONSTRUCTION

142 Crescent Street
Brockton, MA 02302
tel: 508.683.5008
fax: 508.684.2914
e-mail: bka@bkaarch.com

BKA Architects, Inc.
Architecture + Interiors