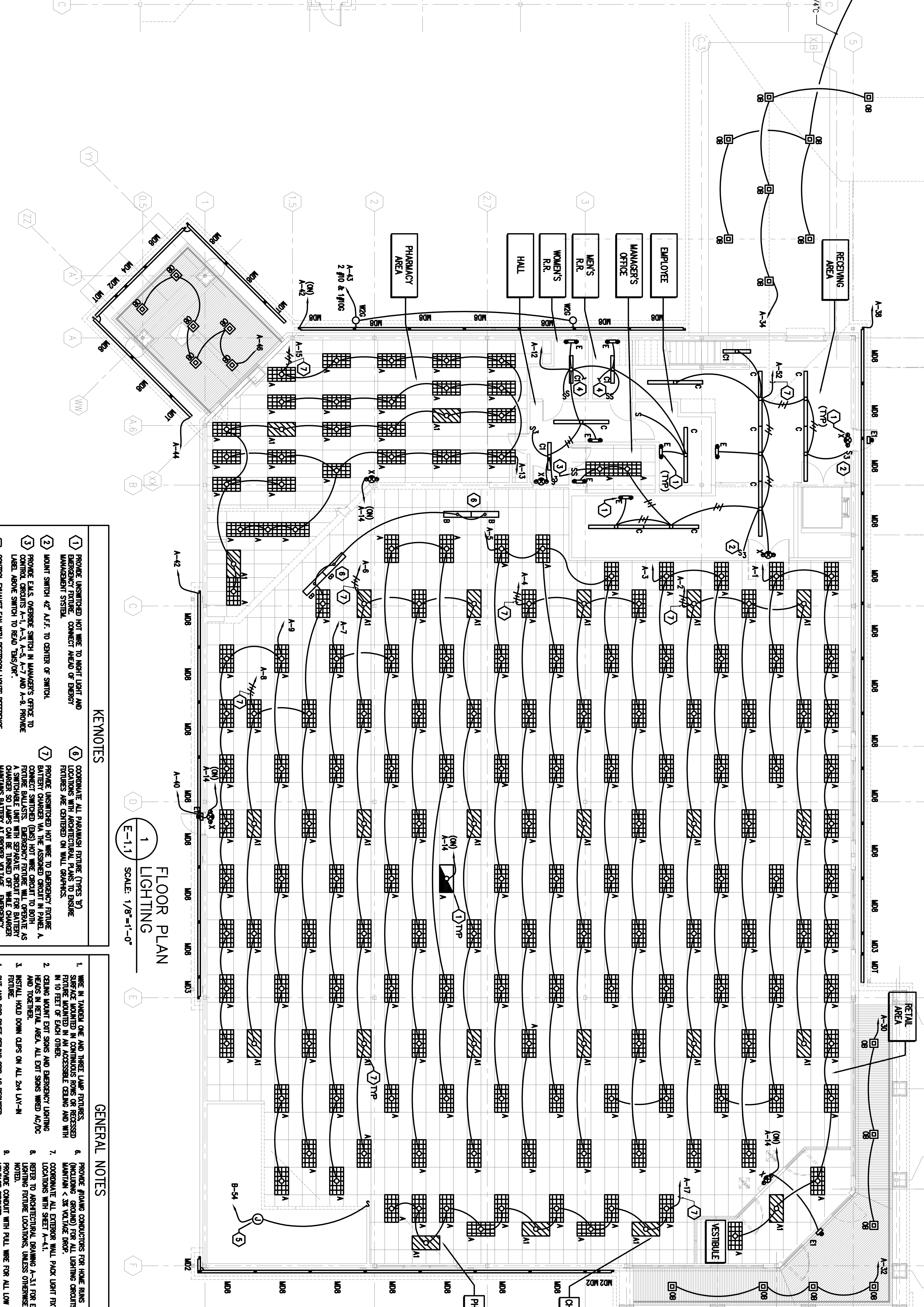


SCHEDULE	DESCRIPTION	MANUFACTURER	NOTATION	VOLTY	LUMENS	BALLASTS	REMARKS/NOTES
A	24 RECESSED PARALEL TRACK	UNIMAX/ZSEW 222 1/2	RECESSED	120	63 2-102/835/95/520	1-4-DECK/24V/MS-SC	HIGH EFFICIENCY TO FURNISH WITH BALLAST
B	RECESSED WALL WASHERS	UNIMAX/ZSEW 222 1/2	RECESSED	120	63 2-102/835/95/520	1-4-DECK/24V/MS-SC	HIGH EFFICIENCY TO FURNISH WITH BALLAST
C	4' STRIP	UNIMAX/MS 2.2	RECESSED	120	63 2-102/835/95/520	1-4-DECK/24V/MS-SC	HIGH EFFICIENCY TO FURNISH WITH BALLAST
D	4' STRIP	UNIMAX/MS 2.2	RECESSED	120	63 2-102/835/95/520	1-4-DECK/24V/MS-SC	HIGH EFFICIENCY TO FURNISH WITH BALLAST
E	4' STRIP	UNIMAX/MS 2.2	RECESSED	120	63 2-102/835/95/520	1-4-DECK/24V/MS-SC	HIGH EFFICIENCY TO FURNISH WITH BALLAST
F	4' STRIP	UNIMAX/MS 2.2	RECESSED	120	63 2-102/835/95/520	1-4-DECK/24V/MS-SC	HIGH EFFICIENCY TO FURNISH WITH BALLAST
G	4' STRIP	UNIMAX/MS 2.2	RECESSED	120	63 2-102/835/95/520	1-4-DECK/24V/MS-SC	HIGH EFFICIENCY TO FURNISH WITH BALLAST
H	4' STRIP	UNIMAX/MS 2.2	RECESSED	120	63 2-102/835/95/520	1-4-DECK/24V/MS-SC	HIGH EFFICIENCY TO FURNISH WITH BALLAST
I	4' STRIP	UNIMAX/MS 2.2	RECESSED	120	63 2-102/835/95/520	1-4-DECK/24V/MS-SC	HIGH EFFICIENCY TO FURNISH WITH BALLAST
J	4' STRIP	UNIMAX/MS 2.2	RECESSED	120	63 2-102/835/95/520	1-4-DECK/24V/MS-SC	HIGH EFFICIENCY TO FURNISH WITH BALLAST
K	4' STRIP	UNIMAX/MS 2.2	RECESSED	120	63 2-102/835/95/520	1-4-DECK/24V/MS-SC	HIGH EFFICIENCY TO FURNISH WITH BALLAST
L	4' STRIP	UNIMAX/MS 2.2	RECESSED	120	63 2-102/835/95/520	1-4-DECK/24V/MS-SC	HIGH EFFICIENCY TO FURNISH WITH BALLAST
M	4' STRIP	UNIMAX/MS 2.2	RECESSED	120	63 2-102/835/95/520	1-4-DECK/24V/MS-SC	HIGH EFFICIENCY TO FURNISH WITH BALLAST
N	4' STRIP	UNIMAX/MS 2.2	RECESSED	120	63 2-102/835/95/520	1-4-DECK/24V/MS-SC	HIGH EFFICIENCY TO FURNISH WITH BALLAST
O	4' STRIP	UNIMAX/MS 2.2	RECESSED	120	63 2-102/835/95/520	1-4-DECK/24V/MS-SC	HIGH EFFICIENCY TO FURNISH WITH BALLAST
P	4' STRIP	UNIMAX/MS 2.2	RECESSED	120	63 2-102/835/95/520	1-4-DECK/24V/MS-SC	HIGH EFFICIENCY TO FURNISH WITH BALLAST
Q	4' STRIP	UNIMAX/MS 2.2	RECESSED	120	63 2-102/835/95/520	1-4-DECK/24V/MS-SC	HIGH EFFICIENCY TO FURNISH WITH BALLAST
R	4' STRIP	UNIMAX/MS 2.2	RECESSED	120	63 2-102/835/95/520	1-4-DECK/24V/MS-SC	HIGH EFFICIENCY TO FURNISH WITH BALLAST
S	4' STRIP	UNIMAX/MS 2.2	RECESSED	120	63 2-102/835/95/520	1-4-DECK/24V/MS-SC	HIGH EFFICIENCY TO FURNISH WITH BALLAST
T	4' STRIP	UNIMAX/MS 2.2	RECESSED	120	63 2-102/835/95/520	1-4-DECK/24V/MS-SC	HIGH EFFICIENCY TO FURNISH WITH BALLAST
U	4' STRIP	UNIMAX/MS 2.2	RECESSED	120	63 2-102/835/95/520	1-4-DECK/24V/MS-SC	HIGH EFFICIENCY TO FURNISH WITH BALLAST
V	4' STRIP	UNIMAX/MS 2.2	RECESSED	120	63 2-102/835/95/520	1-4-DECK/24V/MS-SC	HIGH EFFICIENCY TO FURNISH WITH BALLAST
W	4' STRIP	UNIMAX/MS 2.2	RECESSED	120	63 2-102/835/95/520	1-4-DECK/24V/MS-SC	HIGH EFFICIENCY TO FURNISH WITH BALLAST
X	4' STRIP	UNIMAX/MS 2.2	RECESSED	120	63 2-102/835/95/520	1-4-DECK/24V/MS-SC	HIGH EFFICIENCY TO FURNISH WITH BALLAST
Y	4' STRIP	UNIMAX/MS 2.2	RECESSED	120	63 2-102/835/95/520	1-4-DECK/24V/MS-SC	HIGH EFFICIENCY TO FURNISH WITH BALLAST
Z	4' STRIP	UNIMAX/MS 2.2	RECESSED	120	63 2-102/835/95/520	1-4-DECK/24V/MS-SC	HIGH EFFICIENCY TO FURNISH WITH BALLAST

REFER TO SHEET E3-11 FOR EXTERIOR FLOOR FINISH SCHEDULE.



UPPER FLOOR PLAN
UPPER FLOOR LIGHTING
 SCALE: 1/8"=1'-0"
 NOTES:
 1. MOUNT LIGHT FIXTURES ABOVE EXISTING HOUSING WITH EXISTING CANOPY LIGHT.
 2. MOUNT LIGHT FIXTURES ABOVE EXISTING HOUSING WITH EXISTING CANOPY LIGHT.
 3. MOUNT LIGHT FIXTURES ABOVE EXISTING HOUSING WITH EXISTING CANOPY LIGHT.

FLOOR PLAN
FLOOR LIGHTING
 SCALE: 1/8"=1'-0"
 NOTES:
 1. PROVIDE UNLIT SWITCH TO NIGHT LIGHT AND EMERGENCY LIGHT. CONNECT AHEAD OF EMERGENCY LIGHT MANAGEMENT SYSTEM.
 2. MOUNT SWITCH 42" AFF. TO CENTER OF SWITCH.
 3. PROVIDE EALS OVERHEAD SWITCH IN MANAGER'S OFFICE TO CONTROL FIXTURES A-1, A-2, A-3, A-4, A-5, A-6, A-7 AND A-8. PROVIDE LABEL ABOVE SWITCH TO READ "TEST/ON".
 4. CONTROL EXHAUST FAN WITH RESTROOM LIGHTS REFERENCE SWITCHING DIAGRAM 9/E-21.
 5. PROVIDE CIRCUIT TO PREPARED PULL LIGHT SWITCH FOR (3) INTERIOR WIPER PUMP LAMP. FIXTURES SHIPPED LOSSES TO BE INSTALLED BY CONTRACTOR.

KEYNOTES
 1. PROVIDE UNLIT SWITCH TO NIGHT LIGHT AND EMERGENCY LIGHT. CONNECT AHEAD OF EMERGENCY LIGHT MANAGEMENT SYSTEM.
 2. MOUNT SWITCH 42" AFF. TO CENTER OF SWITCH.
 3. PROVIDE EALS OVERHEAD SWITCH IN MANAGER'S OFFICE TO CONTROL FIXTURES A-1, A-2, A-3, A-4, A-5, A-6, A-7 AND A-8. PROVIDE LABEL ABOVE SWITCH TO READ "TEST/ON".
 4. CONTROL EXHAUST FAN WITH RESTROOM LIGHTS REFERENCE SWITCHING DIAGRAM 9/E-21.
 5. PROVIDE CIRCUIT TO PREPARED PULL LIGHT SWITCH FOR (3) INTERIOR WIPER PUMP LAMP. FIXTURES SHIPPED LOSSES TO BE INSTALLED BY CONTRACTOR.

GENERAL NOTES
 1. WIRE IN TUBING ONE AND THREE LAMP FIXTURES.
 2. SURFACE MOUNTED IN CONDUITS RINGS OR RECESSED IN TOE OF EACH OTHER.
 3. CEILING MOUNT OUT SINKS AND EMERGENCY LIGHTING HEADS IN RETAIL AREA. ALL EXIT SIGNS WERE A/C/O.
 4. INSTALL HOOD DOWN CURS ON ALL 24" LAV-IN SINKS.
 5. CUT AND POP RET CEILING GRID AS REQUIRED.
 6. ROUTE THE FOLLOWING CIRCUITS THROUGH THE EXISTING WIREWAYS AND EXTERIOR LIGHTING CIRCUITS.
 7. COORDINATE ALL EXTERIOR WALL MOUNT LIGHT FIXTURE LOCATIONS WITH SHEET A-11.
 8. REFER TO ARCHITECTURAL DRAWING A-31 FOR EXACT MOUNTING HEIGHTS.
 9. PROVIDE CONDUIT WITH PULL WIRE FOR ALL LOW VOLTAGE CIRCUITS.
 10. WHEN USED, ORANGE PENETRATOR LIGHT FIXTURES TO BE INSTALLED LAST IN SERIES TO AVOID GAPS AND CHECKOUT AREAS.

REVISIONS:

NO.	DESCRIPTION	DATE
1	ISSUED FOR CONSTRUCTION	8/31/09

DEVELOPER:
 A & D REALTY, LLC
 5 MILITIA DRIVE
 LEXINGTON, MA 02421

STORE NUMBER: 329
 NORTHGATE PLAZA
 91 AUBURN STREET
 PORTLAND, MAINE

NEW
CVS/
pharmacy

SEAL:
 R. W. Slight Engineering
 1100 S. Main Street
 Portland, ME 04106
 Phone: 603.233.2777
 Fax: 603.233.2777
 Email: rws@rwseng.com

CONSULTANT:
 BKA Architects, Inc.
 Architecture + Interiors
 142 Crescent Street
 Brockton, MA 02302
 tel : 508.583.5603
 fax : 508.584.2914
 e-mail : bka@bkaarch.com

SHEET NUMBER: E-1.1
TITLE: LIGHTING FLOOR PLANS

DATE: 8/31/09
DRAWING BY: HYZ
JOB NUMBER: 209017

COMMENTS:
 ISSUED FOR CONSTRUCTION

Copyright © 2008 by BKA Architects, Inc. The architectural plans, drawings, designs, specifications and other arrangements on this sheet are and shall remain the property of BKA Architects, Inc. No part thereof shall be copied, disclosed to others, or used in connection with any work or project, other than the specified project for which they have been prepared and developed, without the express knowledge and written consent of BKA Architects, Inc.