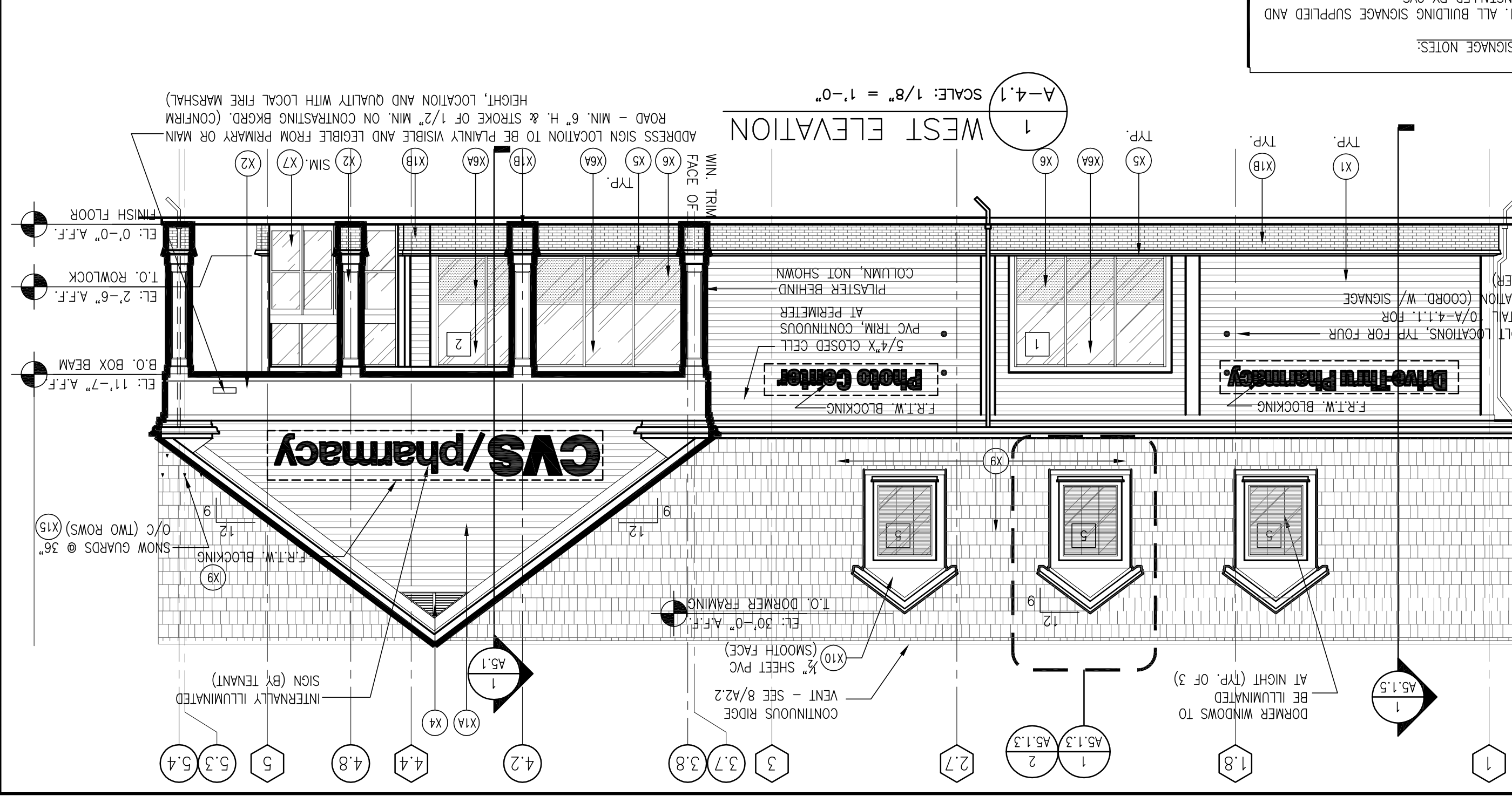
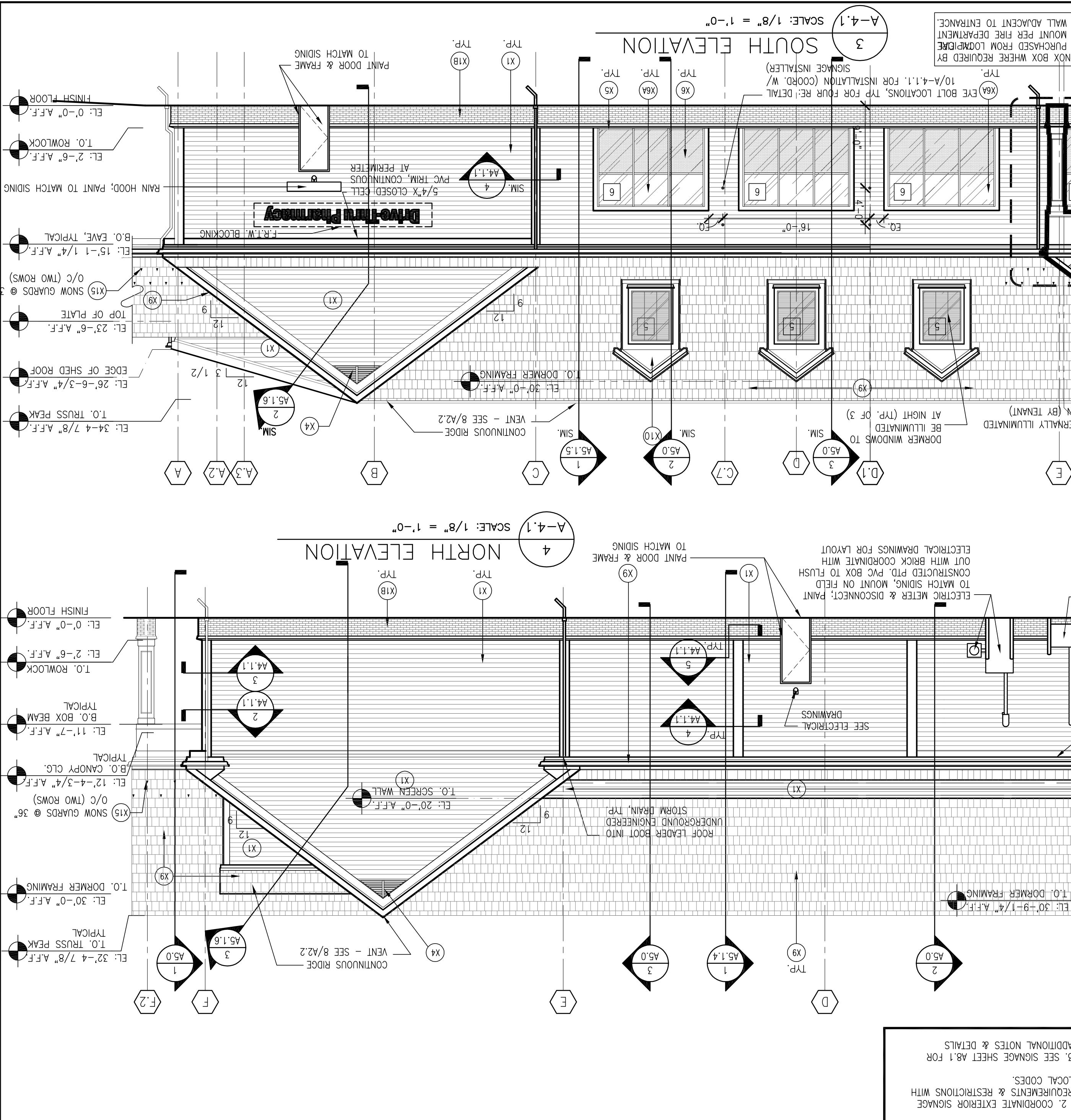
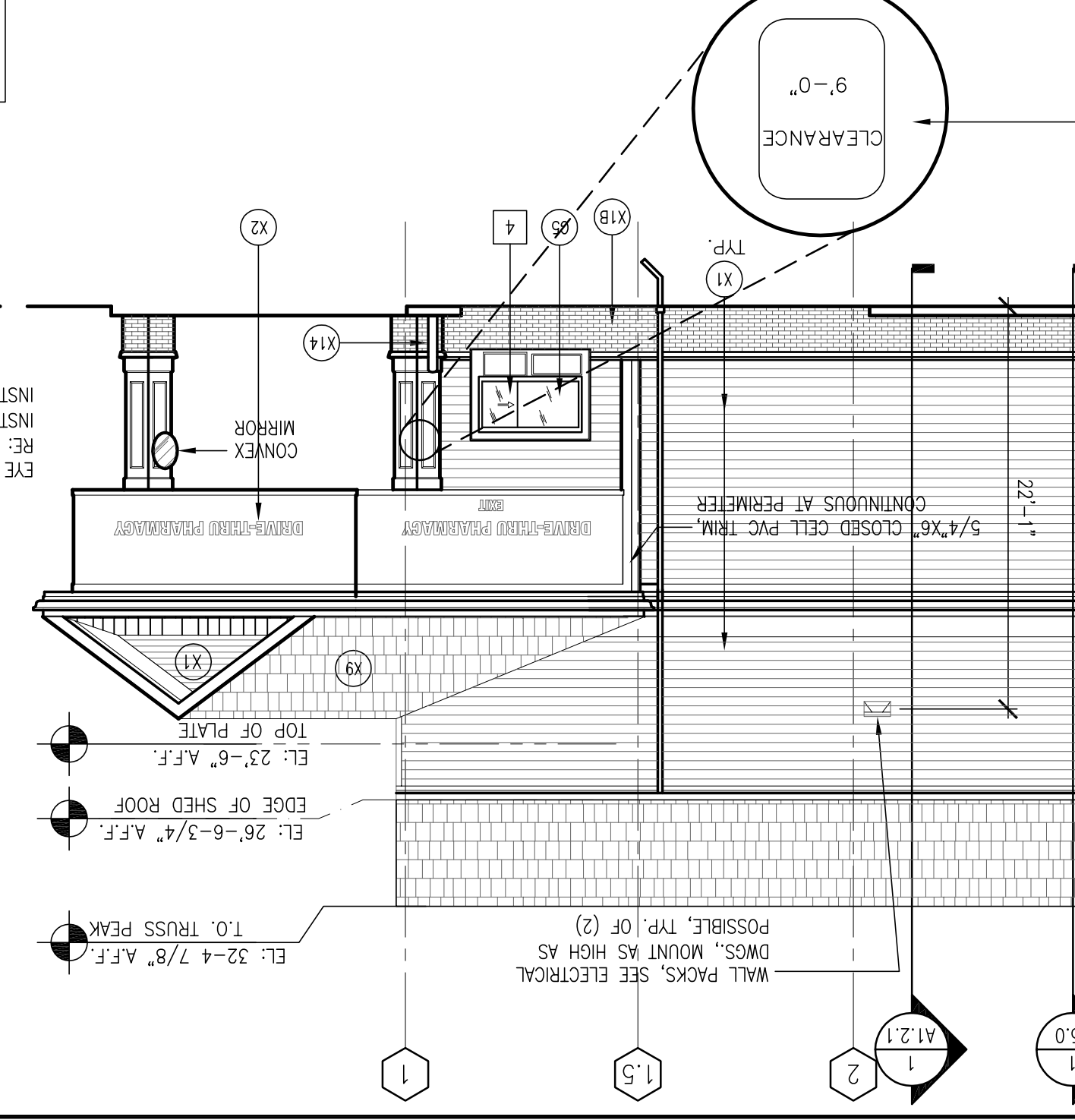
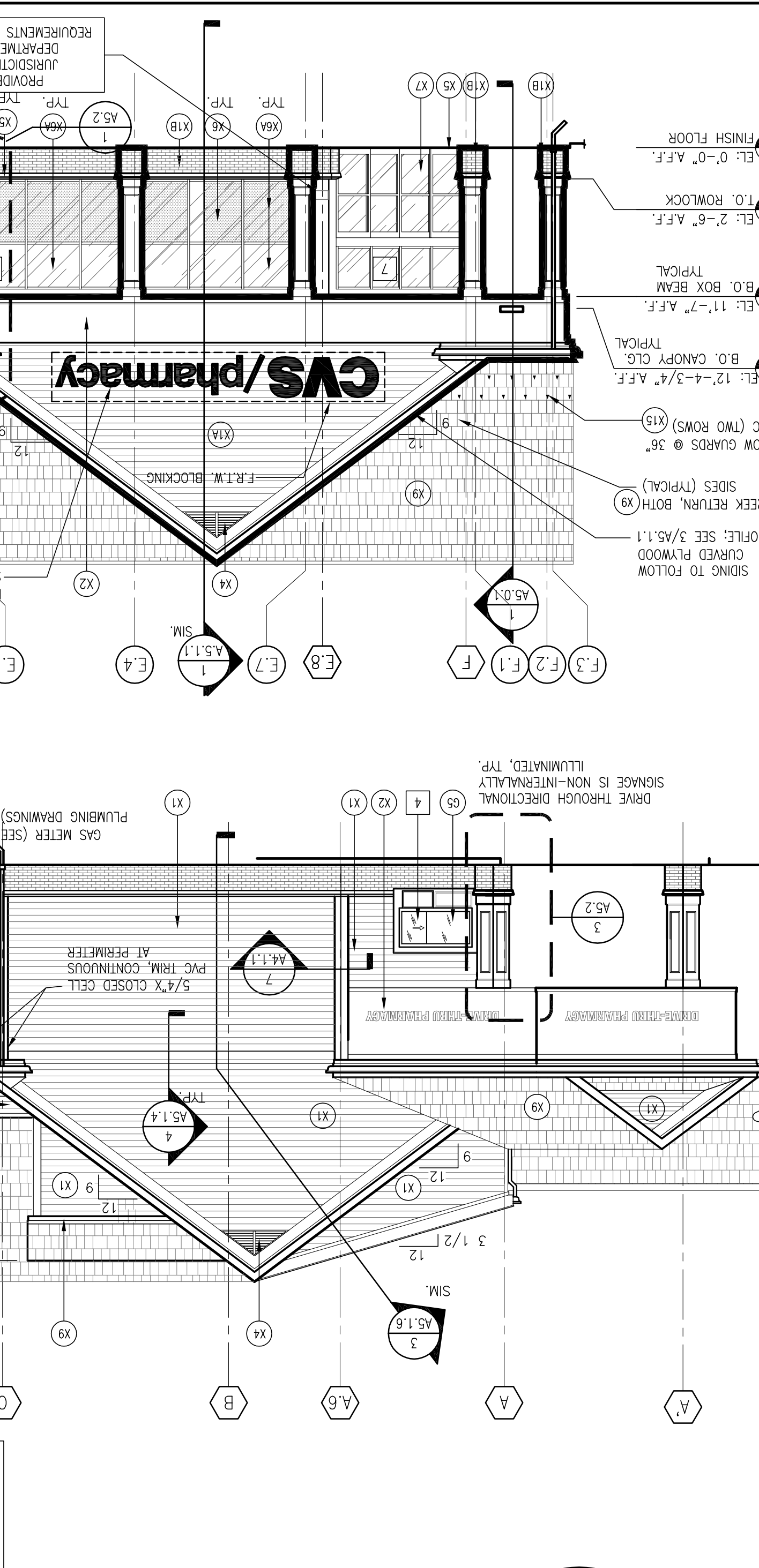
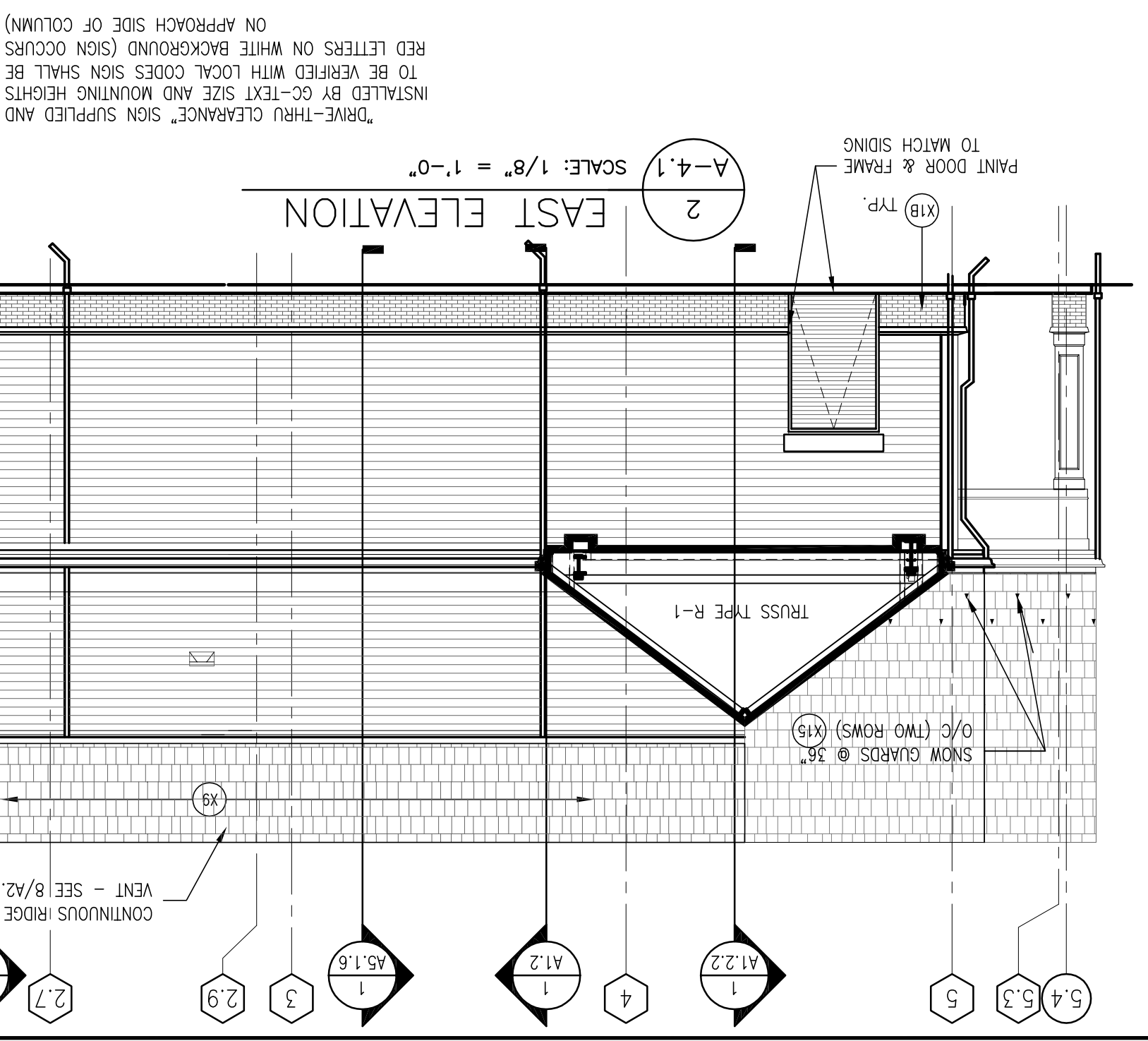


TAG	MATERIAL/MFG.	COLOR/NO.	NOTES
X1	WERZALIT RESIN-BONDED BENJAMIN MOORE #1600		SEE NOTE #4. EXPOSURE, TRADITION (SMOOTH SURFACE).
X1A	WOOD SIDING PANEL SYSTEM		BENJAMIN MOORE #319-79
X1B	EXTERIOR FACE BRICK		CVS RED
X1C	SIGNING SYSTEM		PRIME & PAINT TO MATCH EXISTING
X1D	C.M.U. BLOCK (SPILT FACE), SINGLE SCORE		MANUFACTURED BY GENEST CONCRETE, SANFORD, ME (BUTCH KENEDY: 207-324-3250 X155)
X1E	EXTERIOR FACE BRICK		TO MATCH EXISTING
X1F	WOOD CROWN MOULDING		TO MATCH EXISTING
X2	CLOSED CELL PVC TRIM		BENJAMIN MOORE #319-79 (TYPICAL AT ALL PVC TRIM)
X3	CLADDING		5/4" ABUTTING WOOD
X4	FPON DECORATION		BENJAMIN MOORE #319-79
X5	WIND/OOR STOREFRONT		#451-1 SERIES FLUORON FINISH TAIL: 1-800-566-3698
X6	1" INSULATED FLOAT GLASS		OPALONE SUBRODDED GREY SPANDREL
X6A	1" INSULATED FLOAT GLASS		STOREFRONT WINDOWS
X7	1/4" LAM SAFETY GLASS		DOORS & SIDELIGHTS
X8	PREFINISHED METAL COPING CAP		COLOR TO MATCH ADJACENT
X9	ARCHITECTURAL ASPHALT PEWTER BLEND		APPROVED EQUAL
X10	EXTERIOR PAINTED SURFACE		ARJUN WHITE #319-79
X11	EXTERIOR PIPE BOLLARDS		SAFETY YELLOW
X12	BENJAMIN MOORE		4208-9400
X13	STAINLESS STEEL SNOW GUARDS		MODEL #8 (STAINLESS)

EXTERIOR ELEVATIONS NOTES:

- TYPICAL WERZALIT SIGNING SYSTEM.
- PROVIDE CLAPBOARD W/ 6" T.T.W. / ALL INTEGRAL FLASHINGS, INSIDE & OUTSIDE CORNER TRIM.
- CUT ENDS, ALL JOINTS SHALL BE STAGED, NO VISUAL JOINT PATTERN SHALL BE EVIDENT, PROVIDE PAINTABLE SEALANT AT JUNCTURE BET. SIDING AND TRIM, (MAX 1/4")
- TO PROVIDE COLOR SAMPLES OF ALL PAINTED SIDING AND TRIM PRIOR TO START OF WORK (AND ORDERING OF SIDING)
- EXTERIOR TRIM FOR THE BUILDING SHALL BE CLOSED CELL PVC TRIM, WHERE THE DRAWINGS DENOTE "WOOD" AS OPPOSED TO "PVC". PROVIDE SMOKE PVC TRIM. ALL PVC IS DISTRIBUTED BY THE SHANNON CORPORATION, 329 BOSTON POST ROAD SUBURBY, MA. 01796; PH: 978-443-4911; FAX: 978-443-5804; E-MAIL: SHANNONCORP@AOL.COM
- ALL JOINTS IN SHEET PVC SHALL BE FLUSH FILLED AND SANDED TO ELIMINATE SEAM.
- ALL PVC TRIM ABUTTING WERZALIT SIDING SHALL BE 5/4" UNLESS NOTED OTHERWISE



SIGNAGE NOTES:

- ALL BUILDING SIGNAGE SUPPLIED AND INSTALLED BY CVS.
- COORDINATE EXTERIOR SIGNAGE REQUIREMENTS & RESTRICTIONS WITH LOCAL CODES.
- SEE SIGNAGE SHEET A8.1 FOR ADDITIONAL NOTES & DETAILS.

CVS/pharmacy

NEW

STORE NUMBER: 329

PORTLAND, MAINE
NORTGATE PLAZA
91 AUBURN STREET

DEVELOPER:
A & D REALTY, LLC
5 MILITIA DRIVE
LEXINGTON, MA 02421

DATE: 8/31/09

DRAWING BY: RTK

JOB NUMBER: 209017

TITLE: EXTERIOR ELEVATIONS

SHEET NUMBER: A-4.1

COMMENTS:
ISSUED FOR CONSTRUCTION

REVISIONS:

CONSULTANT:
BKA Architects, Inc.
Architecture + Interiors
142 Crescent Street
Brookton, MA 02302
tel: 508.583.603
fax: 508.584.2914
e-mail: bka@bkaarch.com

Copyright © 2009 by BKA Architects, Inc. The architectural drawings, designs, details, specifications and other information on this sheet are the property of BKA Architects, Inc. No part thereof shall be copied, distributed or used in connection with any work of project, other than the specific project for which they have been prepared and designed, without the express knowledge and written consent of BKA Architects, Inc.