



©2011 STARBUCKS COFFEE COMPANY

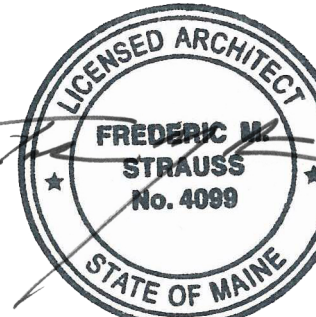
**STARBUCKS COFFEE COMPANY**  
 2401 UTAH AVENUE SOUTH  
 SEATTLE, WASHINGTON 98134  
 (206) 318-1575

THESE DRAWINGS AND SPECIFICATIONS ARE CONFIDENTIAL AND SHALL REMAIN THE SOLE PROPERTY OF STARBUCKS CORPORATION, WHICH IS THE OWNER OF THE COPYRIGHT IN THIS WORK. THEY SHALL NOT BE REPRODUCED (IN WHOLE OR IN PART), SHARED WITH THIRD PARTIES OR USED IN ANY MANNER ON OTHER PROJECTS OR EXTENSIONS TO THIS PROJECT WITHOUT THE PRIOR WRITTEN CONSENT OF STARBUCKS CORPORATION. THESE DRAWINGS AND SPECIFICATIONS ARE INTENDED TO EXPRESS DESIGN INTENT FOR A PROTOTYPICAL STARBUCKS STORE (WHICH IS SUBJECT TO CHANGE AT ANY TIME) AND DO NOT REFLECT ACTUAL SITE CONDITIONS. NEITHER PARTY SHALL HAVE ANY OBLIGATION NOR LIABILITY TO THE OTHER (EXCEPT STATED ABOVE) UNTIL A WRITTEN AGREEMENT IS FULLY EXECUTED BY BOTH PARTIES.

**T P G ARCHITECTURE**

**TPG Architecture, LLP**  
 360 Park Avenue, South, New York, New York 10010  
 212 768 0800 212 768 1597 fax  
 www.tpgarchitecture.com

Frederic M. Strauss



ME License No. 4099  
 Architect of Record

Revision Schedule			
Rev	Date	By	Description

PROJECT NAME:  
**NORTHGATE PLAZA**

PROJECT ADDRESS:  
 91 AUBURN STREET,  
 PORTLAND ME 04103

STORE #: 2830  
 PROJECT #: 22764-021  
 CONCEPT:  
 PALETTE:  
 ISSUE DATE: 12/19/2013  
 DESIGN MANAGER: Eta Kliger  
 LEED® AP:  
 PRODUCTION DESIGNER: AH  
 CHECKED BY: Allison Stadnyck

SHEET TITLE:  
**DESIGN DETAILS**

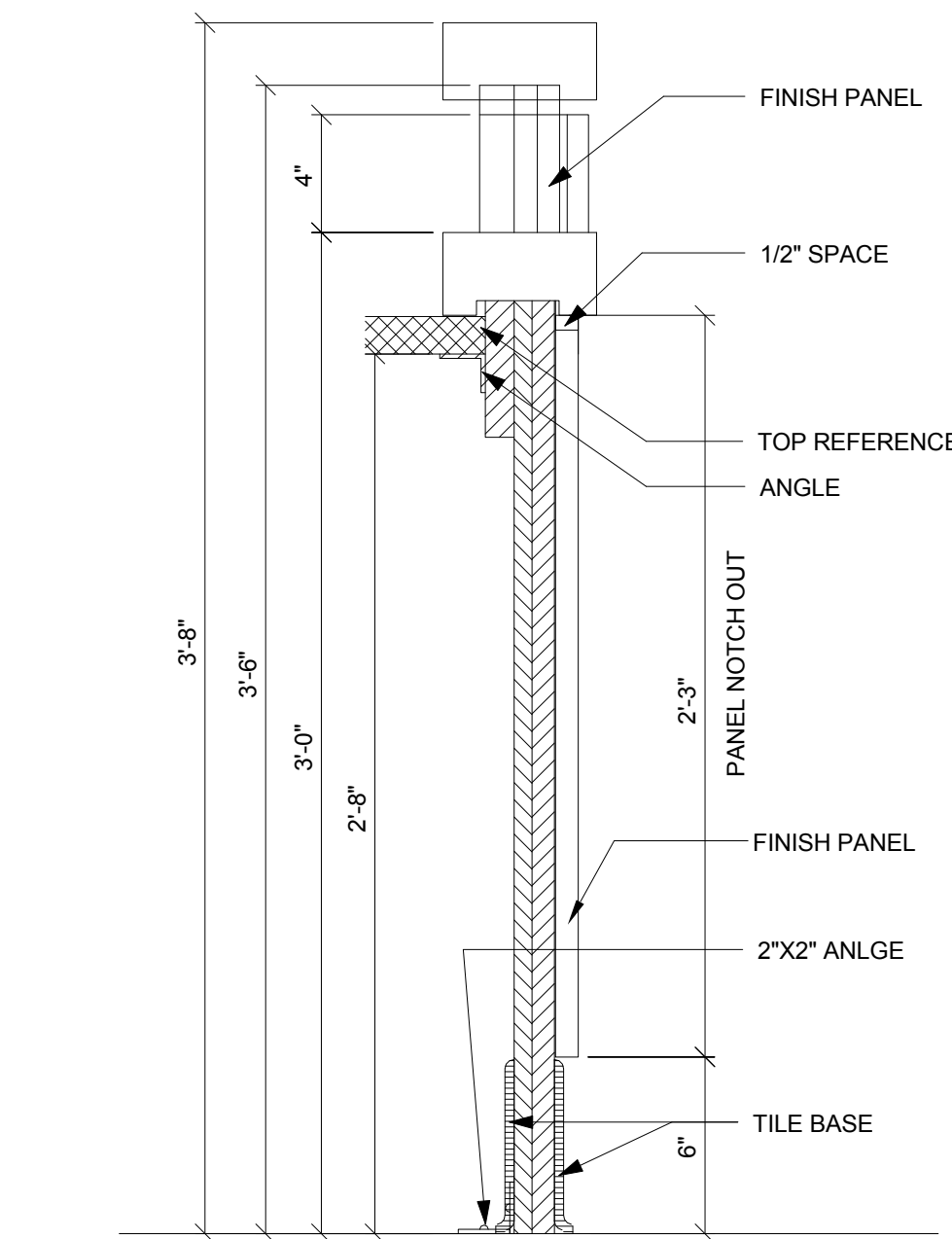
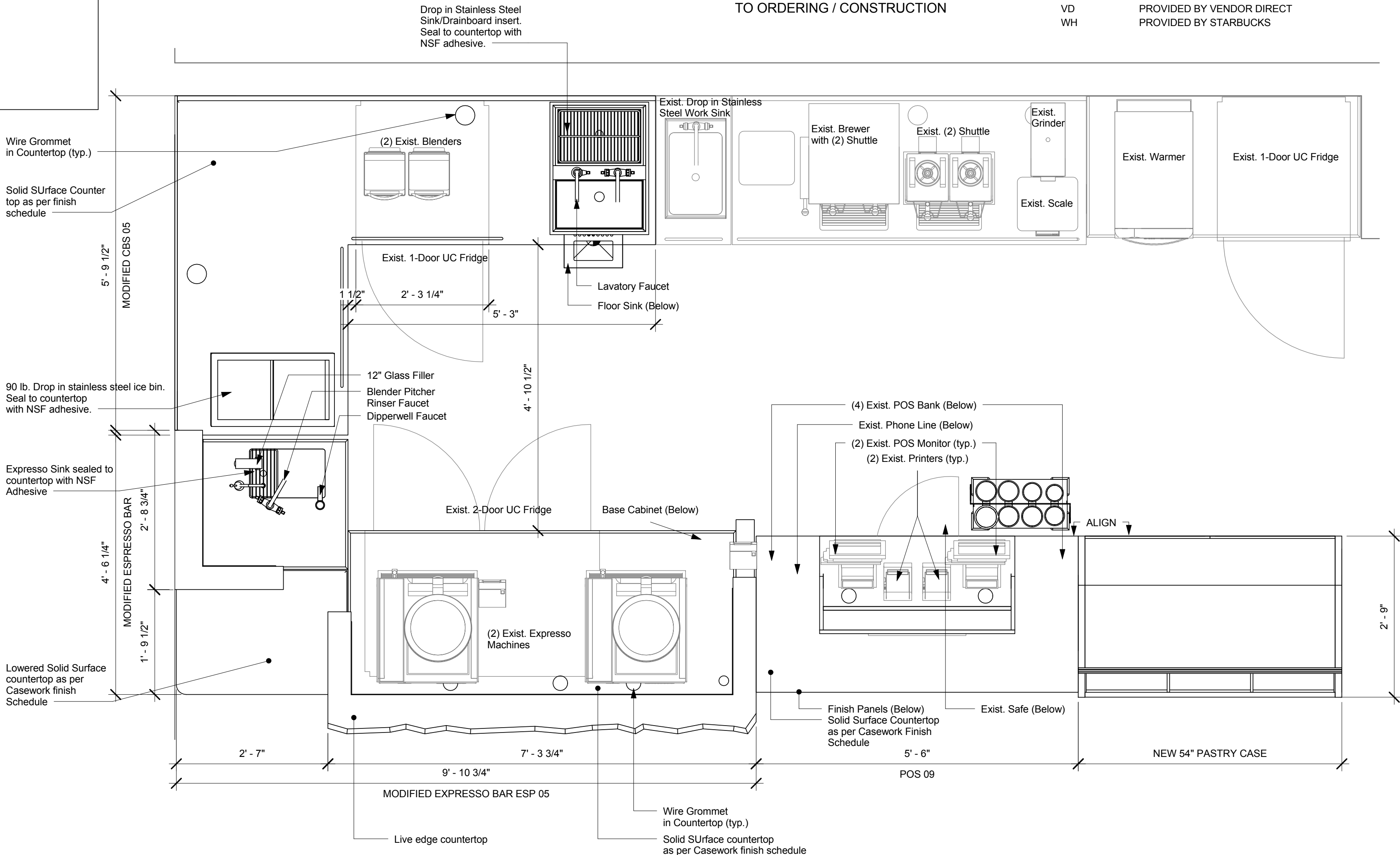
SCALE: As indicated

SHEET NUMBER:  
**I-5002**

**RESPONSIBILITY LEGEND - US**

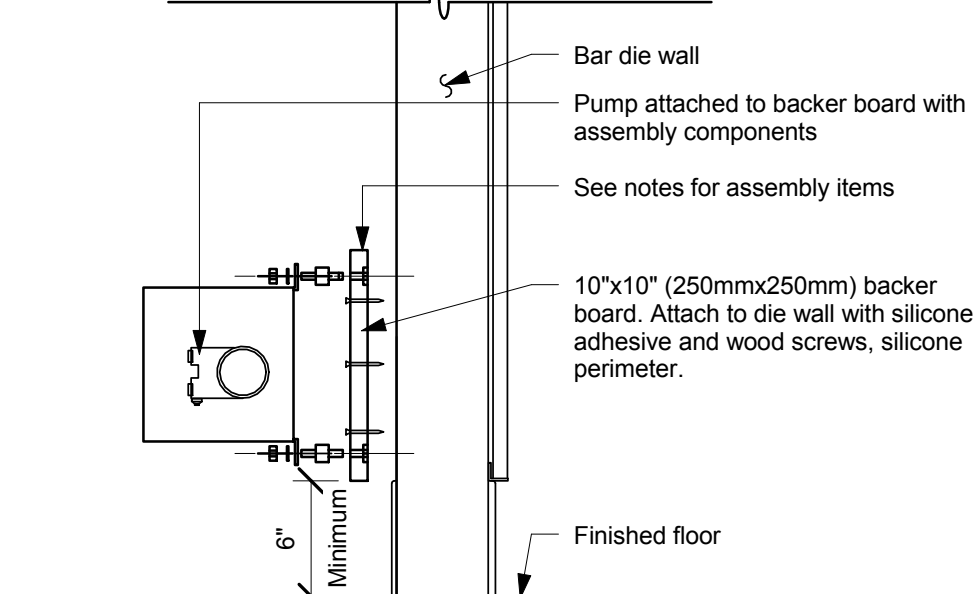
- GC PROVIDED BY GENERAL CONTRACTOR
- LL PROVIDED BY LANDLORD
- VD PROVIDED BY VENDOR DIRECT
- WH PROVIDED BY STARBUCKS

NOTE: ALL RESPONSIBILITIES TO BE CONFIRMED WITH STARBUCKS DM PRIOR TO ORDERING / CONSTRUCTION

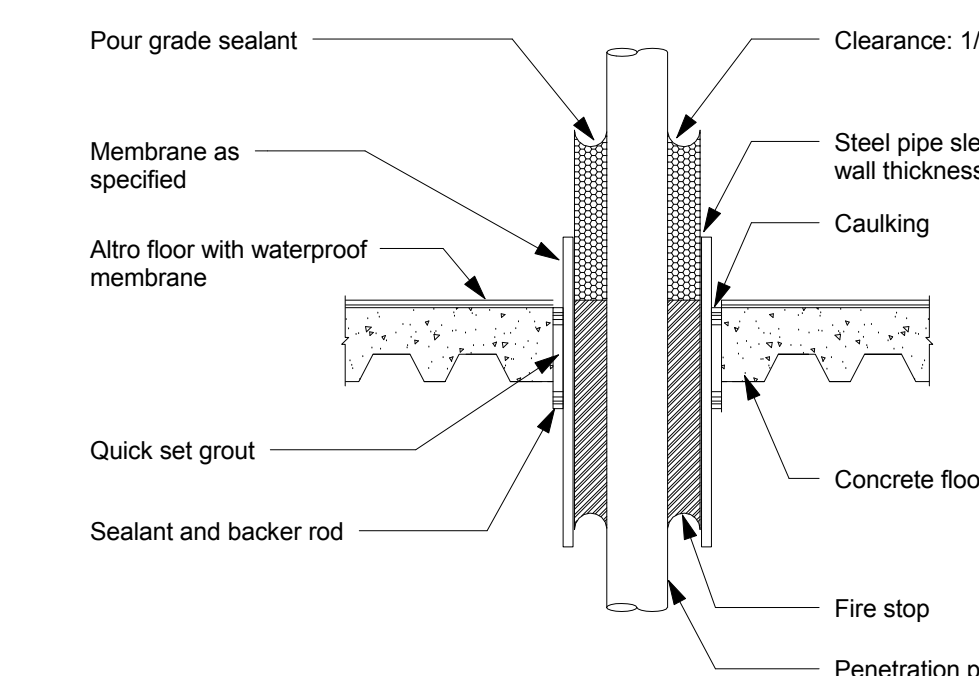


8 Diewall Detail @ Espresso Bar  
 Scale: 6" = 1'-0"

- Notes:
1. Locate pump within cord length limit. Orient with pump head left, right and at bottom. Loosen pump head clamp, rotate and re-tighten as required per orientation to provide front access to flow. Adjustment within cord length limit.
  2. Use Locktite on isolator threads. Do not over tighten.
  3. Loosen pump head clamp, rotate and re-tighten as required for pump orientation.
  4. Backer board assembly includes:
    - (1) Backer board
    - (4) Tenets, 1/4-20 vendor mounted
    - (8) Wood screws #8 1-1/4" (32mm)
    - (4) Neoprene isolators, Karman Rubber, K84-60 Neoprene
    - (4) Lock nuts, 1/4-20 nylon
    - (4) Washers, 1/4" (7mm) flat

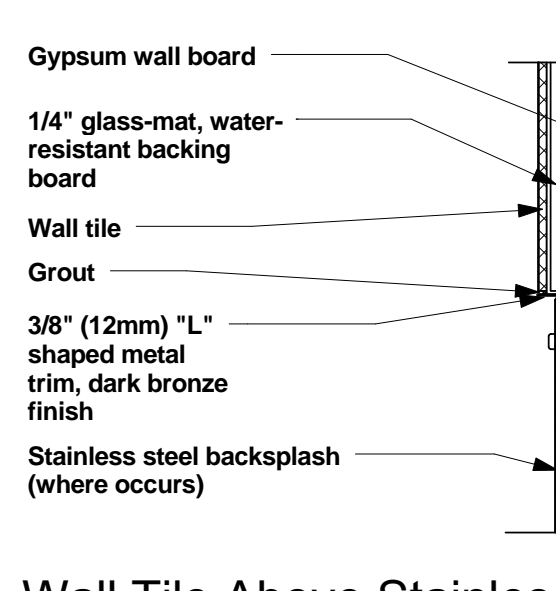
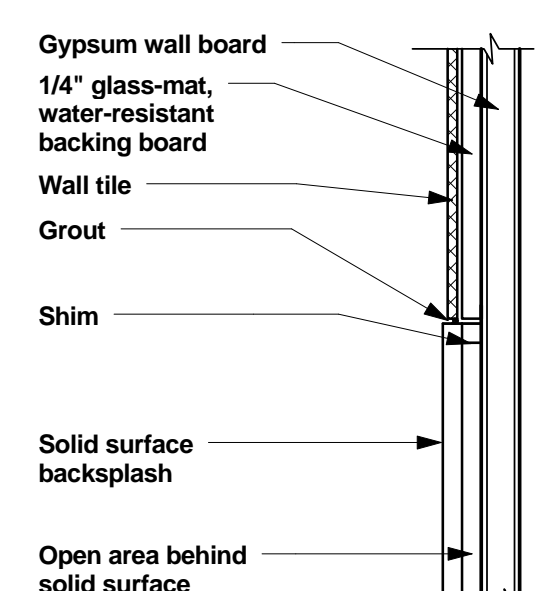


9 Pump Attachment  
 Scale: 1 : 10



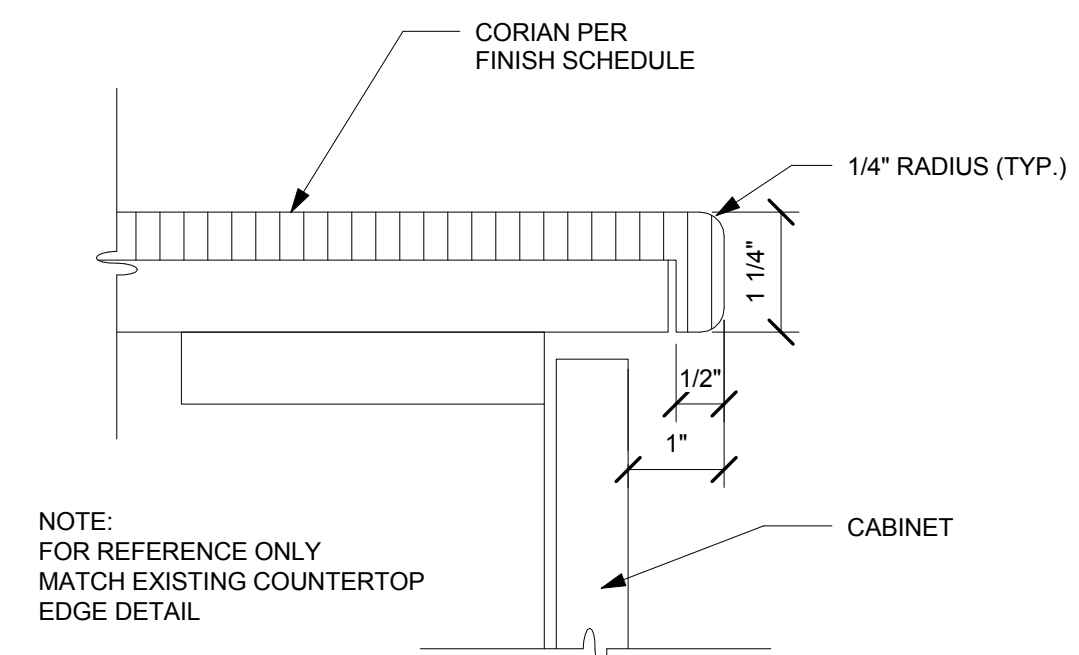
10 Waterproof Sleeve Penetration  
 Scale: 1/4" = 1'-0"

1 Callout (2) of 1ST FLOOR - FF AND E PLAN  
 Scale: 3/4" = 1'-0"

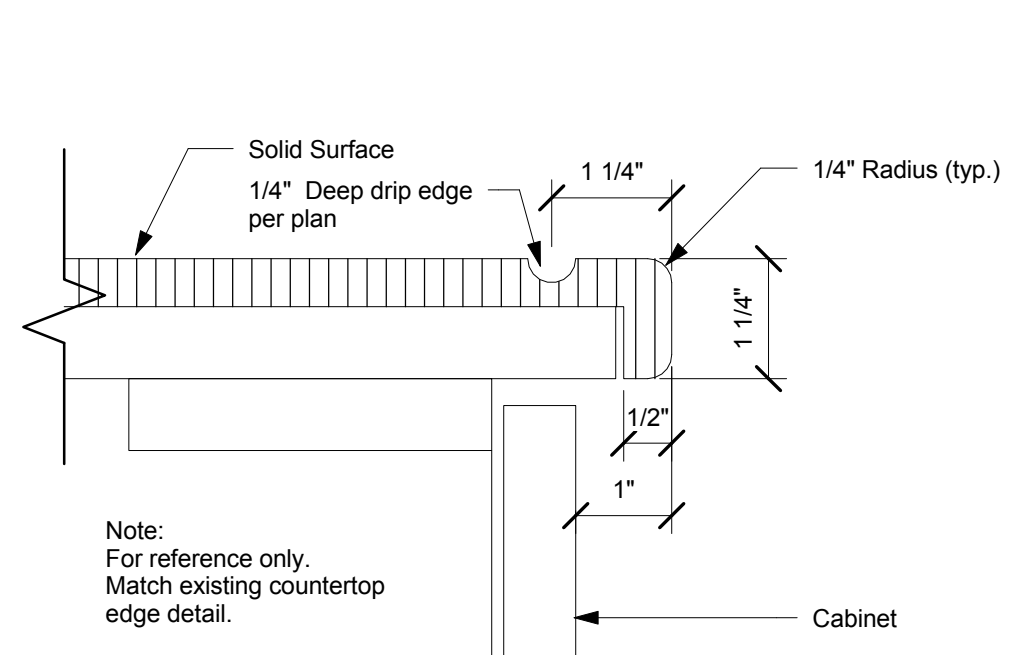


3 Wall Tile Above Stainless Steel Backsplash  
 Scale: 1" = 0'-5"

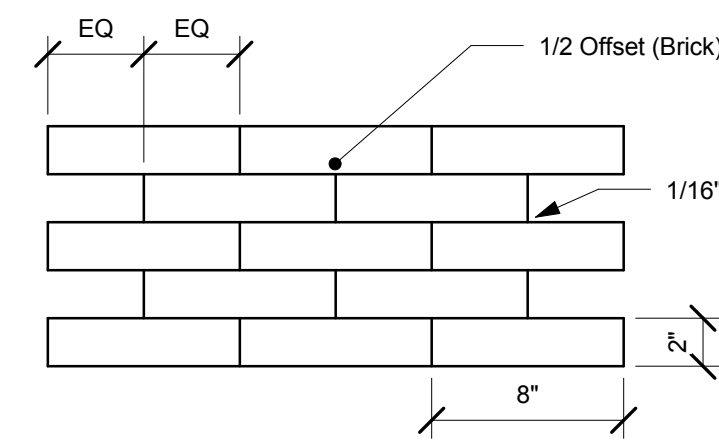
2 Wall Tile Above Solid Surface Backsplash  
 Scale: 1" = 0'-5"



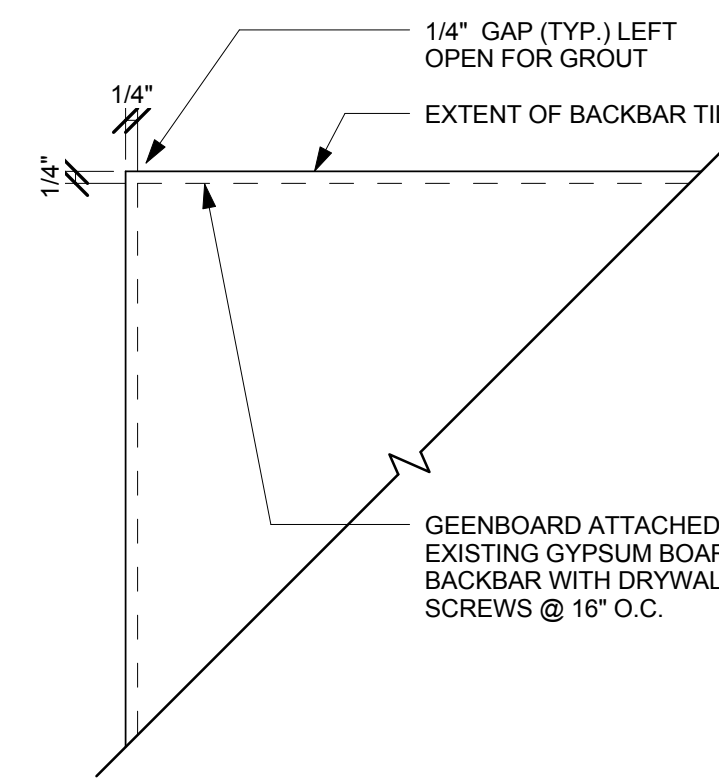
5 Front Line Corian Edge  
 Scale: 6" = 1'-0"



6 Back Bar Corian Edge  
 Scale: 6" = 1'-0"



4 Wall Tile 1/2 Offset  
 Scale: 1 1/2" = 1'-0"



7 TILE-GREEN BOARD DETAIL  
 Scale: 3" = 1'-0"

1/20/2014 12:59:07 PM G:\131513889-00\Arch\Archive\OUT\2014-1-20 DOB\NORTHGATE\_CD\_DOB.rvt