

**FIRE ALARM SYMBOL LEGEND**

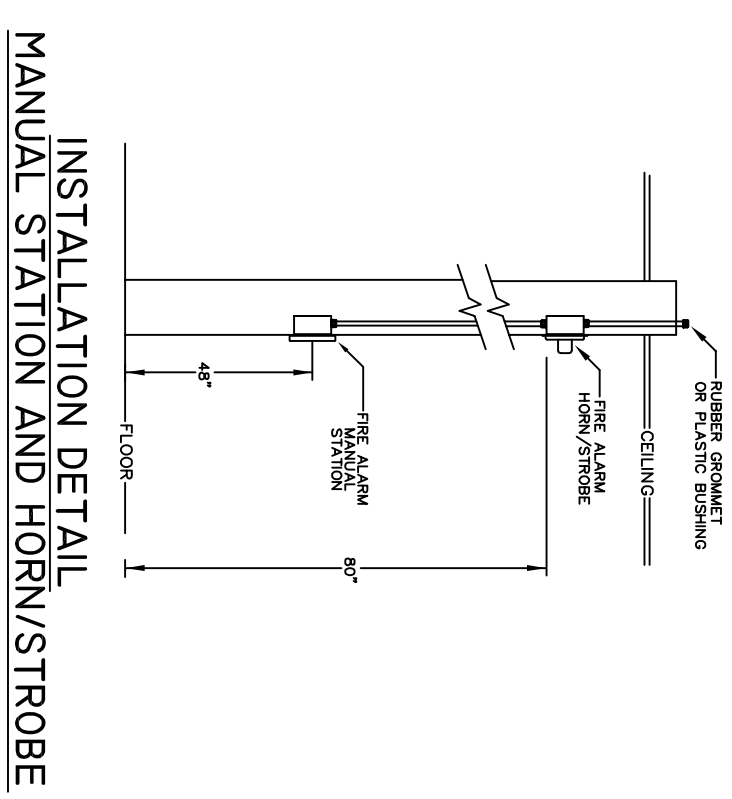
SYMBOL	DESCRIPTION	PART NUMBER	OUTLET BOX
	FIRE ALARM CONTROL PANEL (FACP)	FRELUITE M5300M-10L-S	PROVIDED BY AFA
	FIRE SYSTEM ANNUNCIATOR (FSA)	FRELUITE FI-LOC-80P	4" SQUARE x 2-1/8" DEEP BOX
	AUX. POWER SUPPLY (NAC)	FRELUITE FI-NRM-24E	PROVIDED BY AFA (8-AMP PWR SUPPLY)
	ALARM ENCLOSURE		PROVIDED BY AFA
	MANUAL PULL STATION	FRELUITE FI-BG-LX	4" SQUARE x 2-1/8" DEEP BOX w/1-GANG RING
	PHOTOELECTRIC SMOKE DETECTOR	FRELUITE FI-SO355	4" OCTAGON BOX REQUIRED
	HEAT DETECTOR	FRELUITE FI-D350RPL	INSTALLED BY DIV. 15 POWERED BY ELECTRICIAN
	AHU/RTU SHUT DOWN RELAY	FRELUITE FI-DMF-300	4" SQUARE x 2-1/8" DEEP BOX
	WALL STROBE	SYSTEM SENSOR BK-SR	4" SQUARE x 2-1/8" DEEP BOX w/2-GANG RING
	WALL HORN/STROBE	4" SQUARE x 2-1/8" DEEP BOX w/2-GANG RING	
	Ceiling Strobe	SYSTEM SENSOR BK-SOR	4" SQUARE x 2-1/8" DEEP BOX w/2-GANG RING
	WEATHERPROOF HORN/STROBE		
	MONITOR MODULE	FRELUITE FI-MMF-300	STANDARD SINGLE GANG BOX
	REMOTE ALARM/TEST SWITCH	FRELUITE FI-RTS451WEV	4" SQUARE x 2-1/8" DEEP BOX w/1-GANG RING
	WATER FLOW		
	VALVE TAMPER		
	KNOX BOX		
	FIRE ALARM PULL BOX		
	MASTERBOX		

**W I R E L E G E N D**

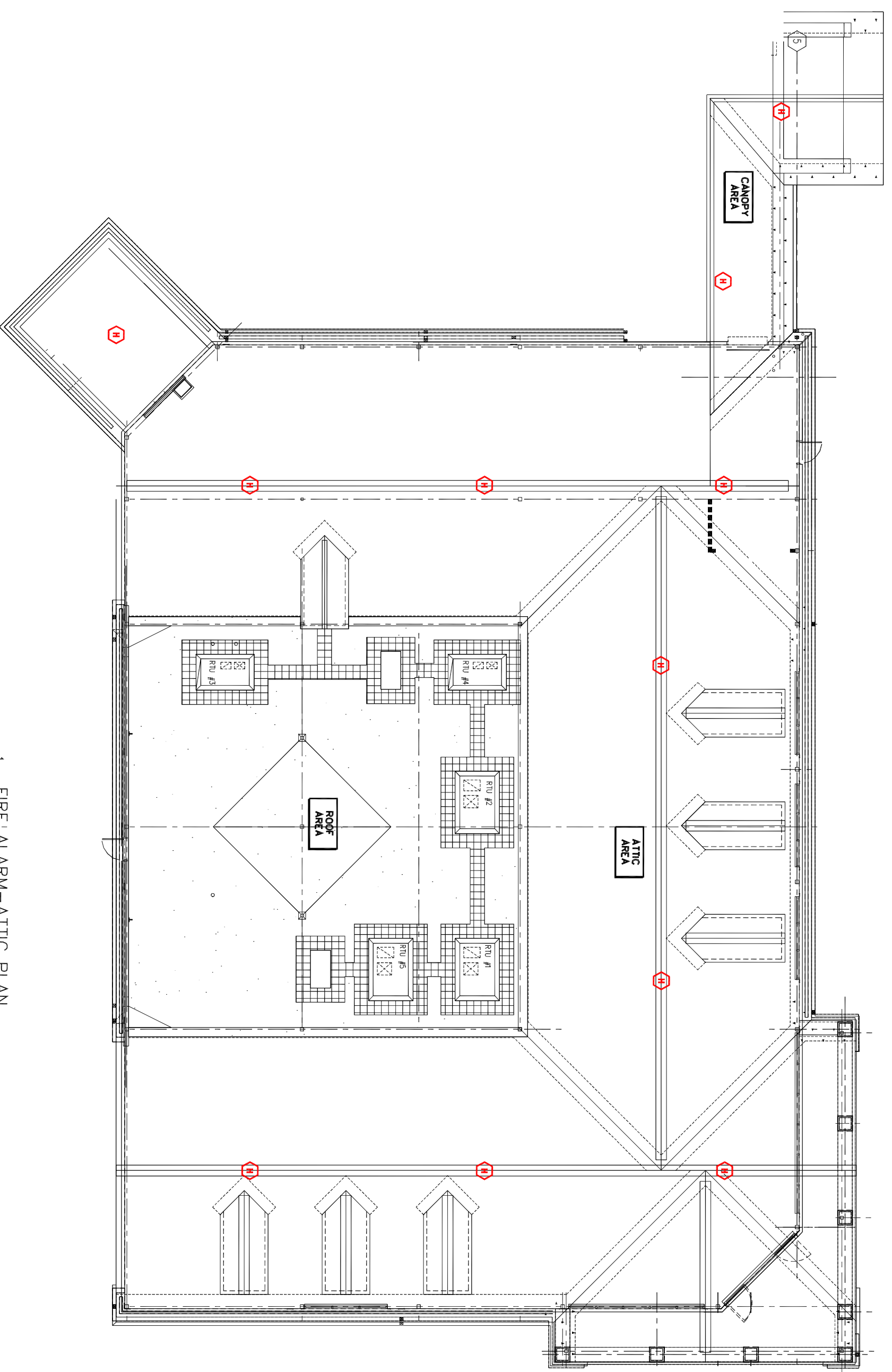
LETTER	DESCRIPTION	USE
A	#16/2 COND. SOLID - FRP TYPE	ADDRESSABLE SIG. CIRCUIT
B	#16/2 COND. SOLID - FRP TYPE	NOTIFICATION CIRCUIT
C	#16/2 COND. SOLID - FRP TYPE	AHU CONTROL CIRCUIT
G	AS REQUIRED - SOLID FRP TYPE	ANNUNCIATOR/KEYPAD CIRCUIT
R	#16/2 COND. SOLID-FRP TYPE	REMOTE ALARM/TEST SWITCH CIRCUIT

THIS SYSTEM WILL BE INSTALLED AND TESTED IN ACCORDANCE WITH NFPA 72, CURRENT EDITION AND ALL WIRING WILL CONFORM TO ALL LOCAL CODES.

- NOTE: UNLESS OTHERWISE NOTED:
- ALL CABLES SHALL BE MINIMUM 5/4" EMT.
  - ALL CABLE SHALL BE FIRE PROTECTIVE FRP TYPE.
  - MOUNT FIRE ALARM CONTROL PANEL 70" AFF TO TOP.
  - MOUNT KEYPAD/ANNUNCIATOR 56" AFF TO CENTER.
  - MOUNT MANUAL STATIONS 48" AFF TO CENTER.
  - MOUNT ELECTRONIC HORN & STROBES 2' AFF TO BOTTOM.
  - MOUNT WEATHERPROOF HORN/STROBE 2' AFF TO BOTTOM.
  - ALL INITIATION AND NOTIFICATION CIRCUITS SHALL BE SUPPLEMENTED.
  - THE PANEL SHALL NOT BE USED TO POWER ANY
  - VERIFY ALL DEVICE LOCATIONS PRIOR TO ROUGH-IN.



**AS-BUILT DRAWING - 4/27/10**



1 FIRE ALARM-ATTIC PLAN  
TA-1Z SCALE 1/8"=1'-0"



AFA PROTECTIVE SYSTEMS, INC.  
200 HIGH ST. BOSTON, MA, 02110  
PHONE: 617-772-5900 FAX: 617-772-5923

FIRE ALARM PRINT BY:  
JOSEPH DONOVAN, C.E.T.  
CERT #100333

**CVS/**  
**pharmacy**

RELO

STORE NUMBER: 329

NORTHGATE PLAZA  
91 AUBURN STREET  
PORTLAND, MAINE