

# FIRE ALARM SYMBOL LEGEND

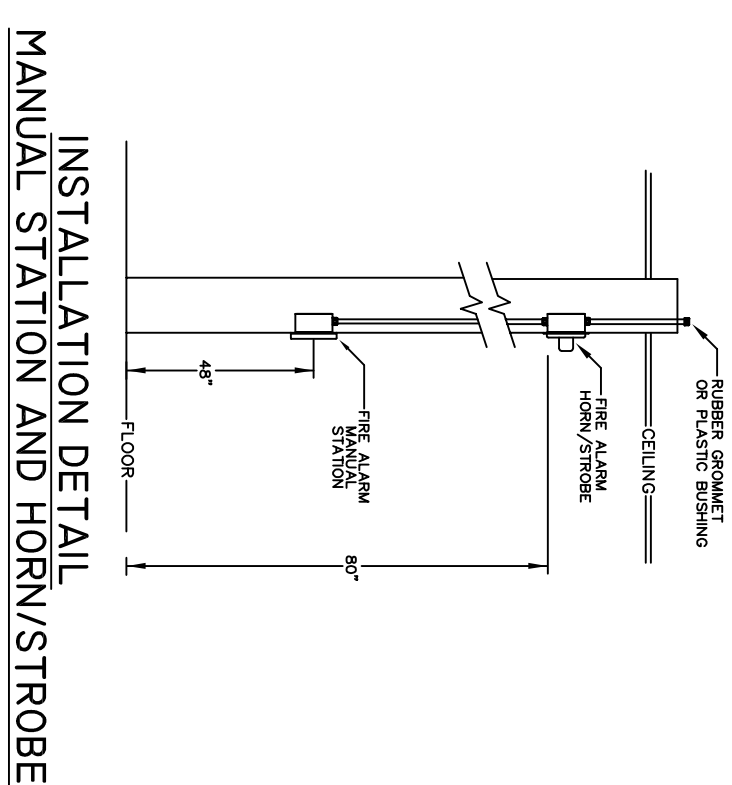
SYMBOL	DESCRIPTION	PART NUMBER	OUTLET BOX
	FIRE ALARM CONTROL PANEL (FACP)	FRULITE MS9200-INDS	PROVIDED BY AFA
	FIRE SYSTEM ANNUNCIATOR (FSA)	FRULITE FL-LOC-80F	4" SQUARE x 2-1/8" DEEP BOX
	AUX. POWER SUPPLY (NAC)	FRULITE FL-XRM-24E	PROVIDED BY AFA (8-AMP PWR SUPPLY)
	ALARM ENCLOSURE	FRULITE FL-BG-LX	PROVIDED BY AFA
	MANUAL PULL STATION	FRULITE FL-SQ335	4" SQUARE x 2-1/8" DEEP BOX w/1-GANG RING
	PHOTOELECTRIC SMOKE DETECTOR	FRULITE FL-0350PR	4" OCTAGON BOX REQUIRED
	AIR DUCT HOUSING/DETECTOR	FRULITE FL-0350PR	INSTALLED BY DIV. 15 POWERED BY ELECTRICIAN
	HEAT DETECTOR	FRULITE FL-CHF-300	4" SQUARE x 2-1/8" DEEP BOX
	AHU/RHU SHUT DOWN RELAY	FRULITE FL-CHF-300	4" SQUARE x 2-1/8" DEEP BOX
	WALL STROBE	SYSTEM SENSOR BK-SR	4" SQUARE x 2-1/8" DEEP BOX w/2-GANG RING
	WALL HORN/STROBE	SYSTEM SENSOR BK-F2R	4" SQUARE x 2-1/8" DEEP BOX w/2-GANG RING
	CEILING STROBE	SYSTEM SENSOR BK-SGR	4" SQUARE x 2-1/8" DEEP BOX w/2-GANG RING
	WEATHERPROOF HORN/STROBE	FRULITE FL-MAF-300	STANDARD SINGLE GANG BOX
	MONITOR MODULE	FRULITE FL-RTS45KEY	4" SQUARE x 2-1/8" DEEP BOX w/1-GANG RING
	REMOTE ALARM/TEST SWITCH	FRULITE FL-RTS45KEY	4" SQUARE x 2-1/8" DEEP BOX w/1-GANG RING
	WATER FLOW		
	VALVE TAMPER		
	KNOX BOX		
	FIRE ALARM PULL BOX		
	MASTERBOX		

# WIRE LEGEND

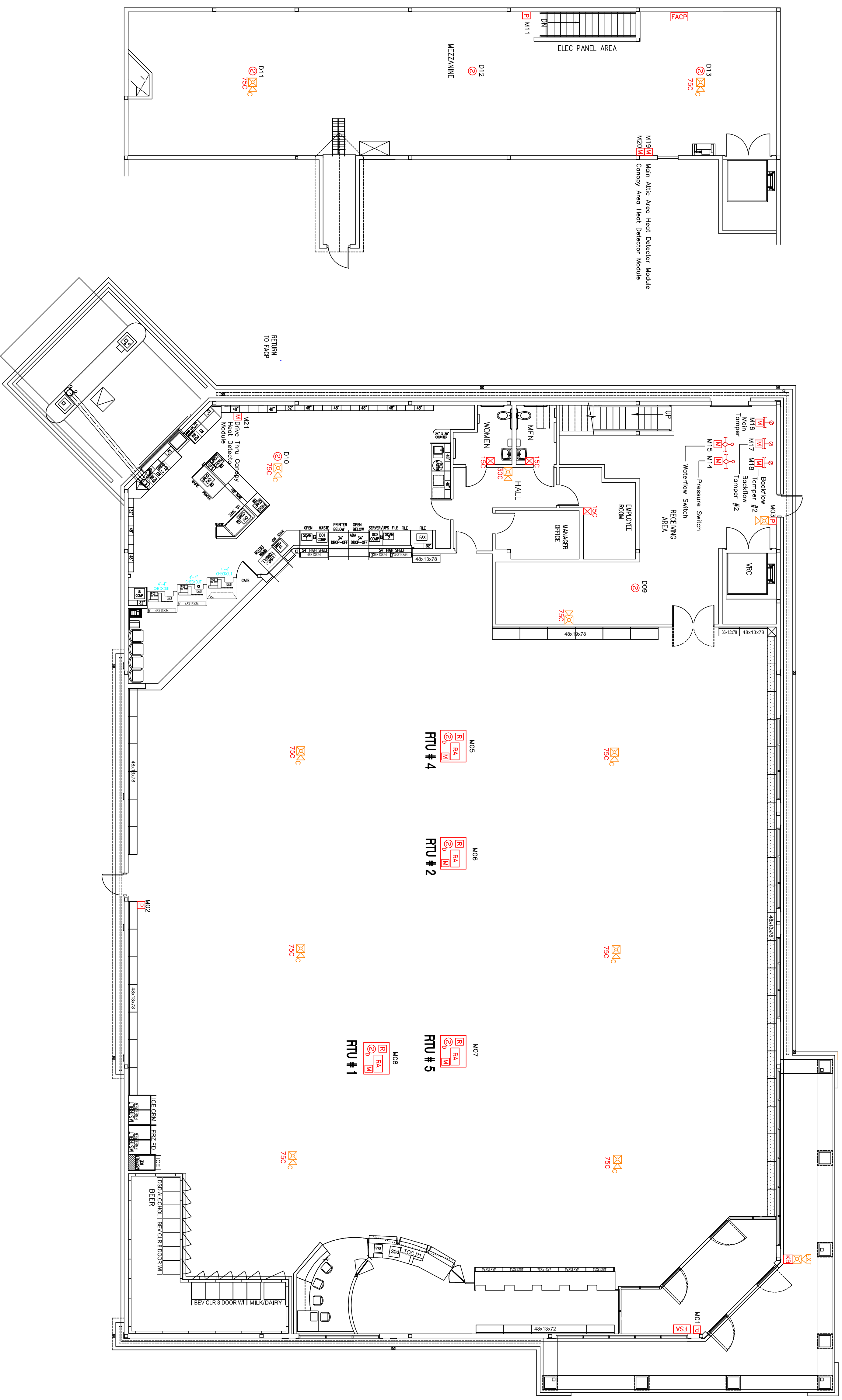
LETTER	DESCRIPTION	USE
A	#16/2 COND. SOLID - FRP TYPE	ADDRESSABLE SLC CIRCUIT
B	#16/2 COND. SOLID - FRP TYPE	NOTIFICATION CIRCUIT
C	#16/2 COND. SOLID - FRP TYPE	AHU CONTROL CIRCUIT
G	AS REQUIRED - SOLID FRP TYPE	ANNUNCIATOR/KEYPAD CIRCUIT
R	#16/4 COND. SOLID-FRP TYPE	REMOTE ALARM/TEST SWITCH CIRCUIT

NOTE: UNLESS OTHERWISE NOTED  
 A. ALL CONDUIT SHALL BE MINIMUM 3/4" EMT.  
 B. ALL CABLE SHALL BE FIRE PROTECTIVE FRP TYPE.  
 C. MOUNT FIRE ALARM CONTROL PANEL 70" AFF TO TOP.  
 D. MOUNT KEYPAD/ANNUNCIATOR 56" AFF TO CENTER.  
 E. MOUNT MANUAL STATIONS 48" AFF TO CENTER TO BOTTOM.  
 F. MOUNT MANUAL STATIONS WITHIN 3'-0" OF CONTROLLER.  
 G. ALL INITIATION AND NOTIFICATION CIRCUITS SHALL BE SUPERVISED.  
 H. OBSERVE ALL DEVICE POLARITIES.  
 I. THE PANEL SHALL NOT BE USED TO POWER ANY  
 J. THE PANEL SHALL NOT BE USED TO POWER ANY  
 K. VERIFY ALL DEVICE LOCATIONS PRIOR TO ROUGH-IN.

THIS SYSTEM WILL BE INSTALLED AND TESTED IN ACCORDANCE WITH NFPA 72, CURRENT EDITION AND ALL WIRING WILL CONFORM TO ALL LOCAL CODES.



**AS-BUILT DRAWING - 4/127/10**



AFA PROTECTIVE SYSTEMS, INC.  
 200 High St. Boston, MA, 02110  
 PHONE: 617-772-5900 FAX: 617-772-5923

FIRE ALARM PRINT BY:  
 JOSEPH DONOVAN, C.E.T.  
 CERT#100033

**CVS/**  
 pharmacy

RELO  
 STORE NUMBER: 329  
 NORTHGATE PLAZA  
 91 AUBURN STREET  
 PORTLAND, MAINE