

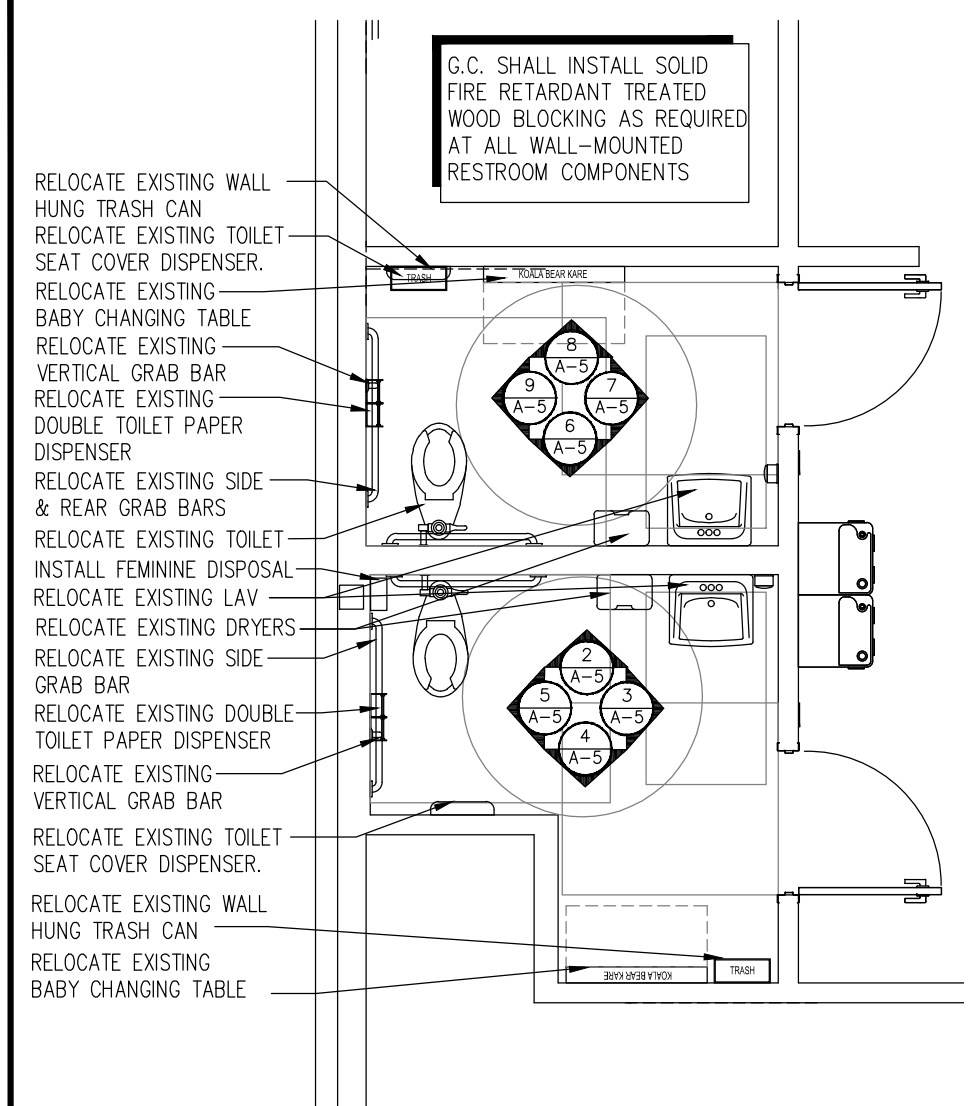
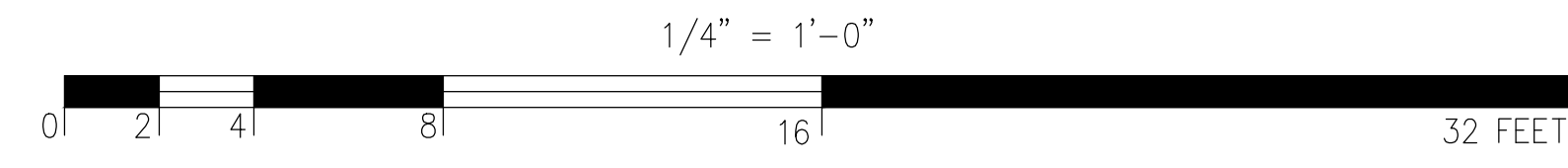


CONSULTANT:

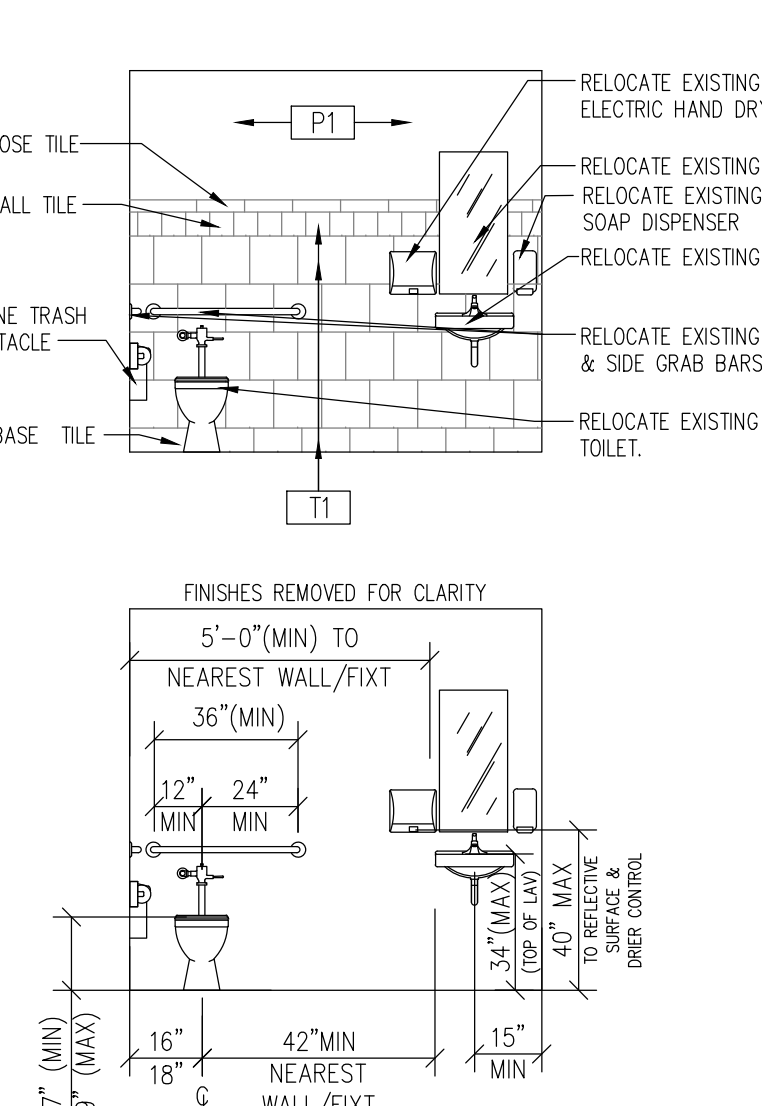
REVISIONS:

PROJECT MANAGER:	MHA
LAYOUT COORD.	SAM
PROJECT ARCHITECT:	WSA
PLANNING MGR.	LS
DRAWING BY:	PP
DATE:	07/13/15
DRAWING SCALE:	AS NOTED
TITLE:	PLUMBING PLANS & DETAILS
SHEET NUMBER:	A-5

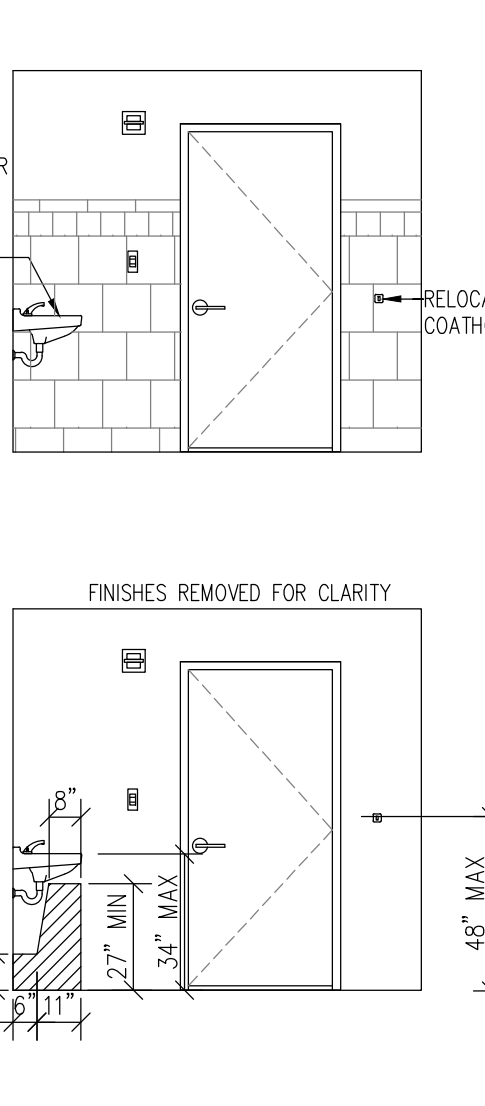
COMMENTS:



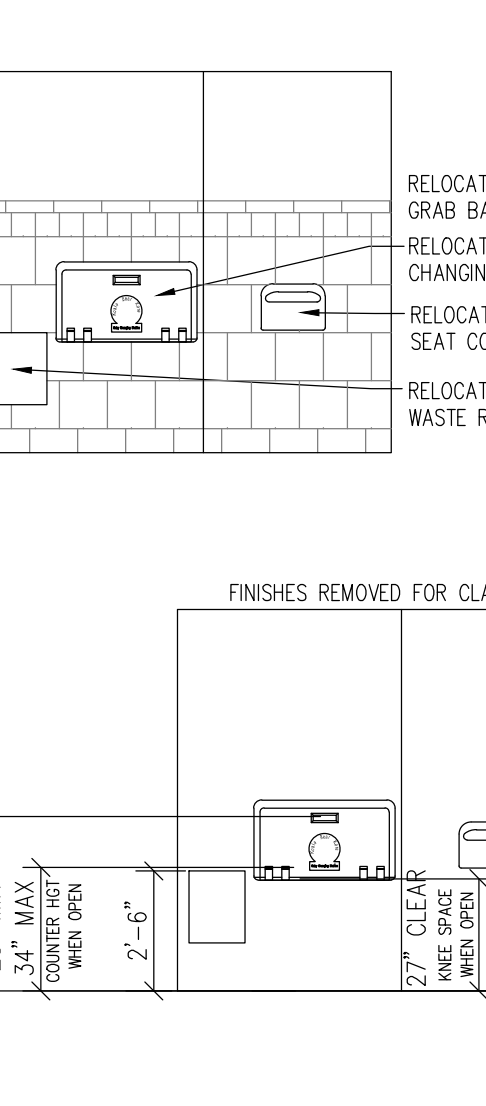
1 RESTROOM PLAN  
 A-5 SCALE: 1/4" = 1'-0"



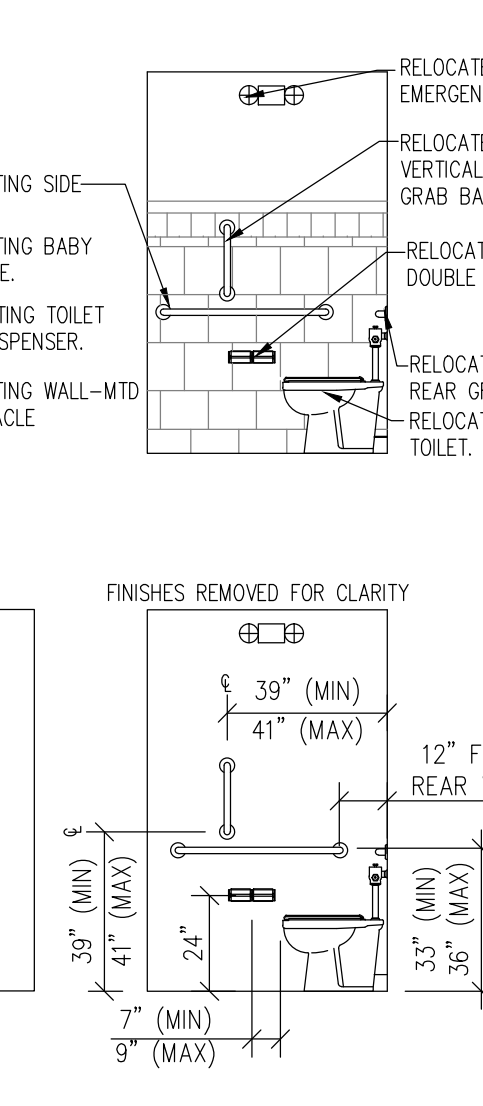
2 WOMEN'S RESTROOM  
 A-5 SCALE: 1/4" = 1'-0"



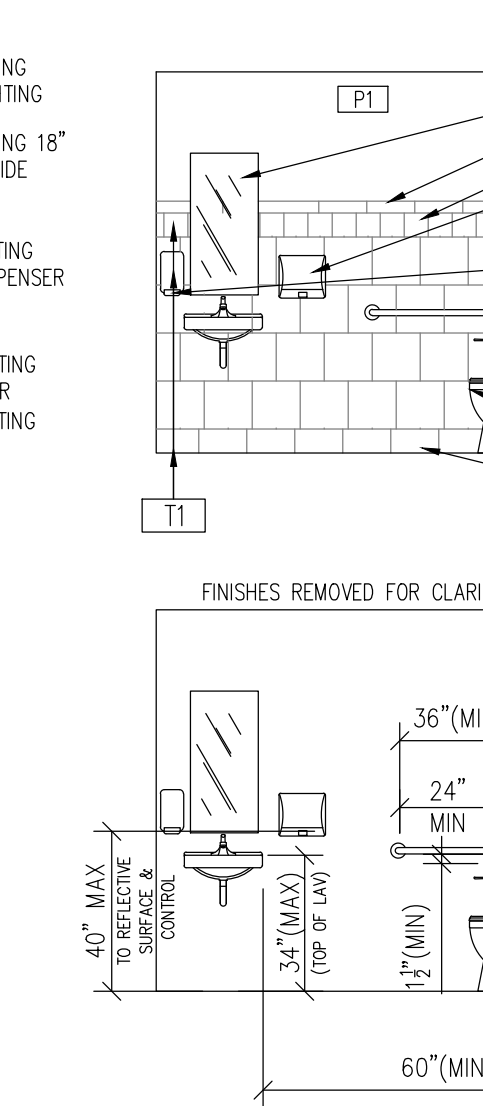
3 WOMEN'S RESTROOM  
 A-5 SCALE: 1/4" = 1'-0"



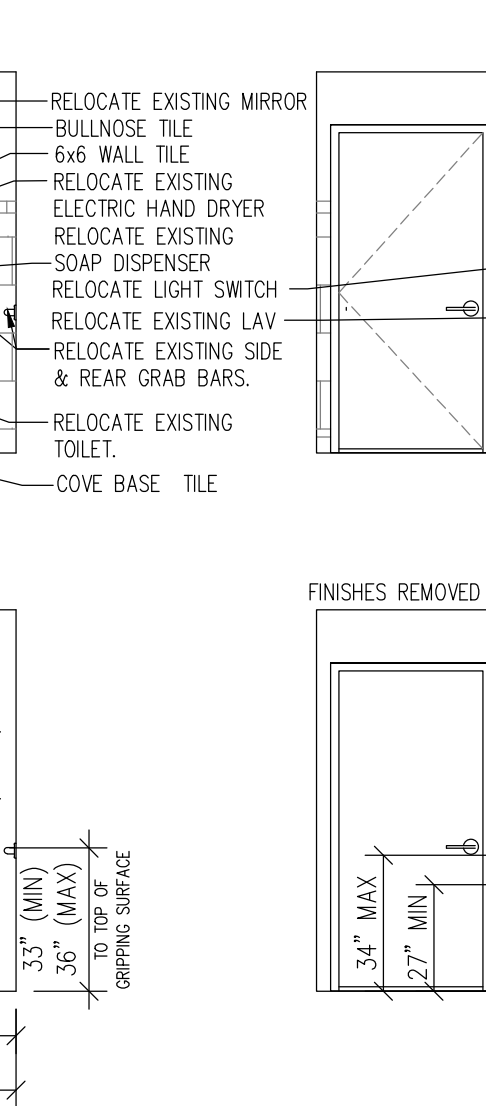
4 WOMEN'S RESTROOM  
 A-5 SCALE: 1/4" = 1'-0"



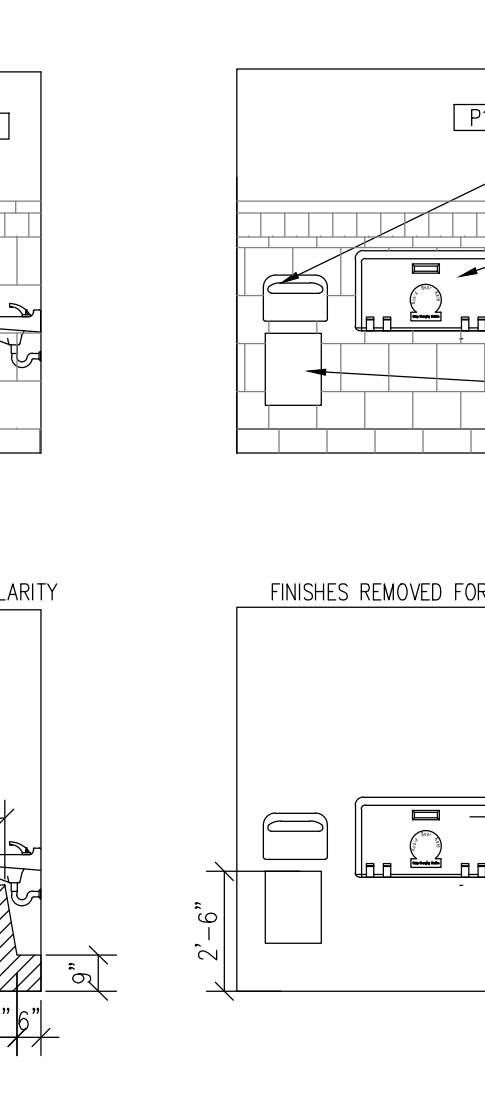
5 WOMEN'S RESTROOM  
 A-5 SCALE: 1/4" = 1'-0"



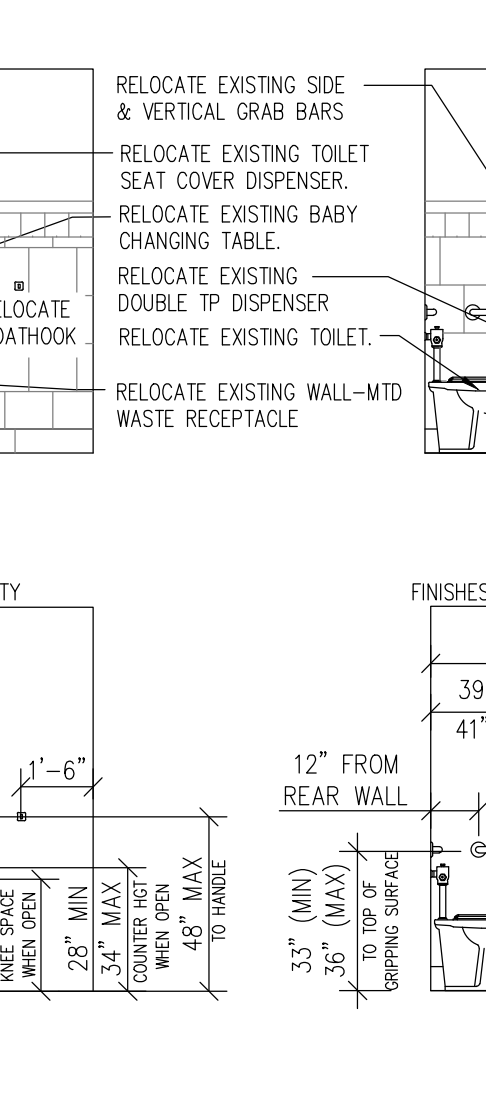
6 MEN'S RESTROOM  
 A-5 SCALE: 1/4" = 1'-0"



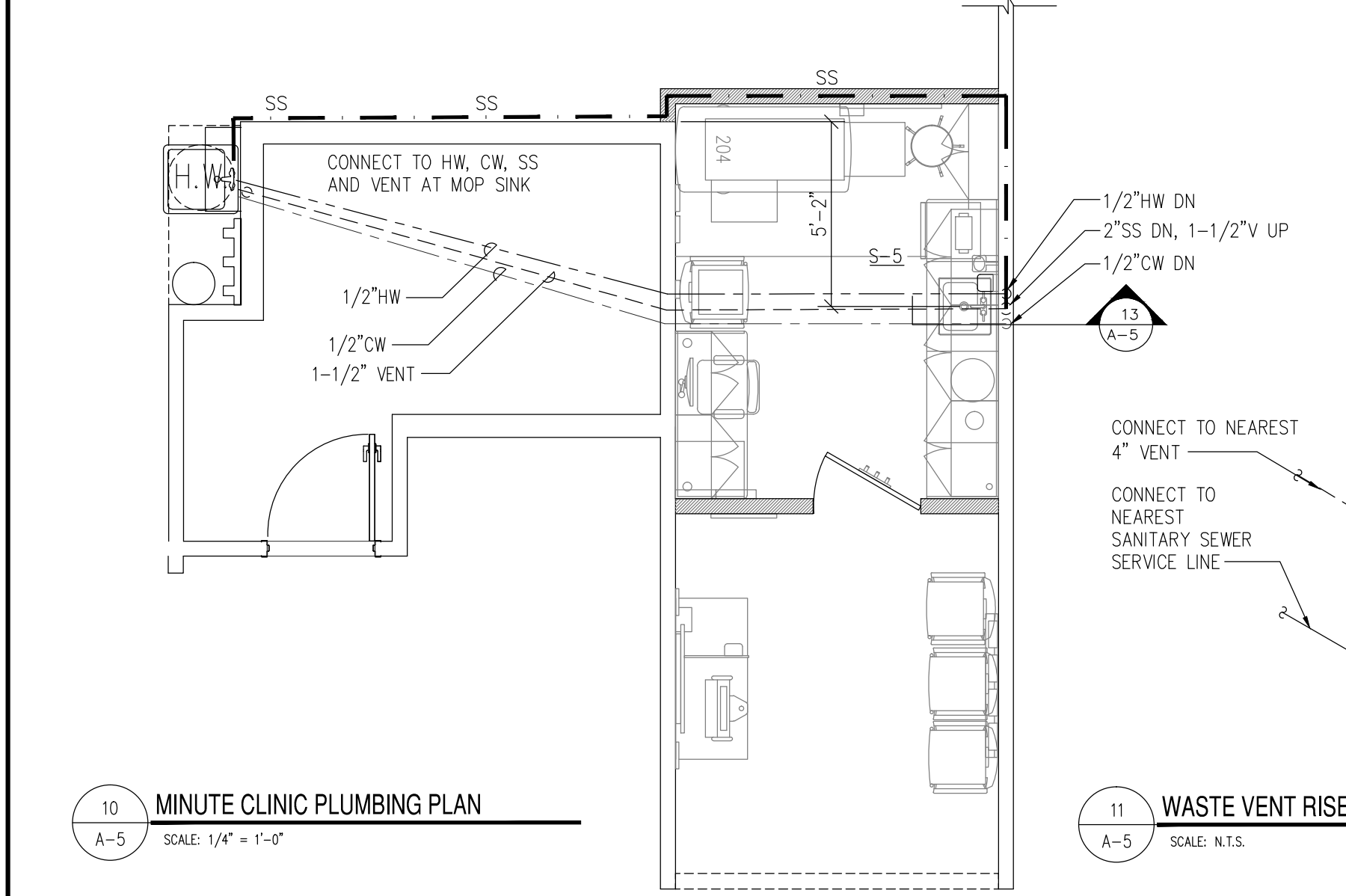
7 MEN'S RESTROOM  
 A-5 SCALE: 1/4" = 1'-0"



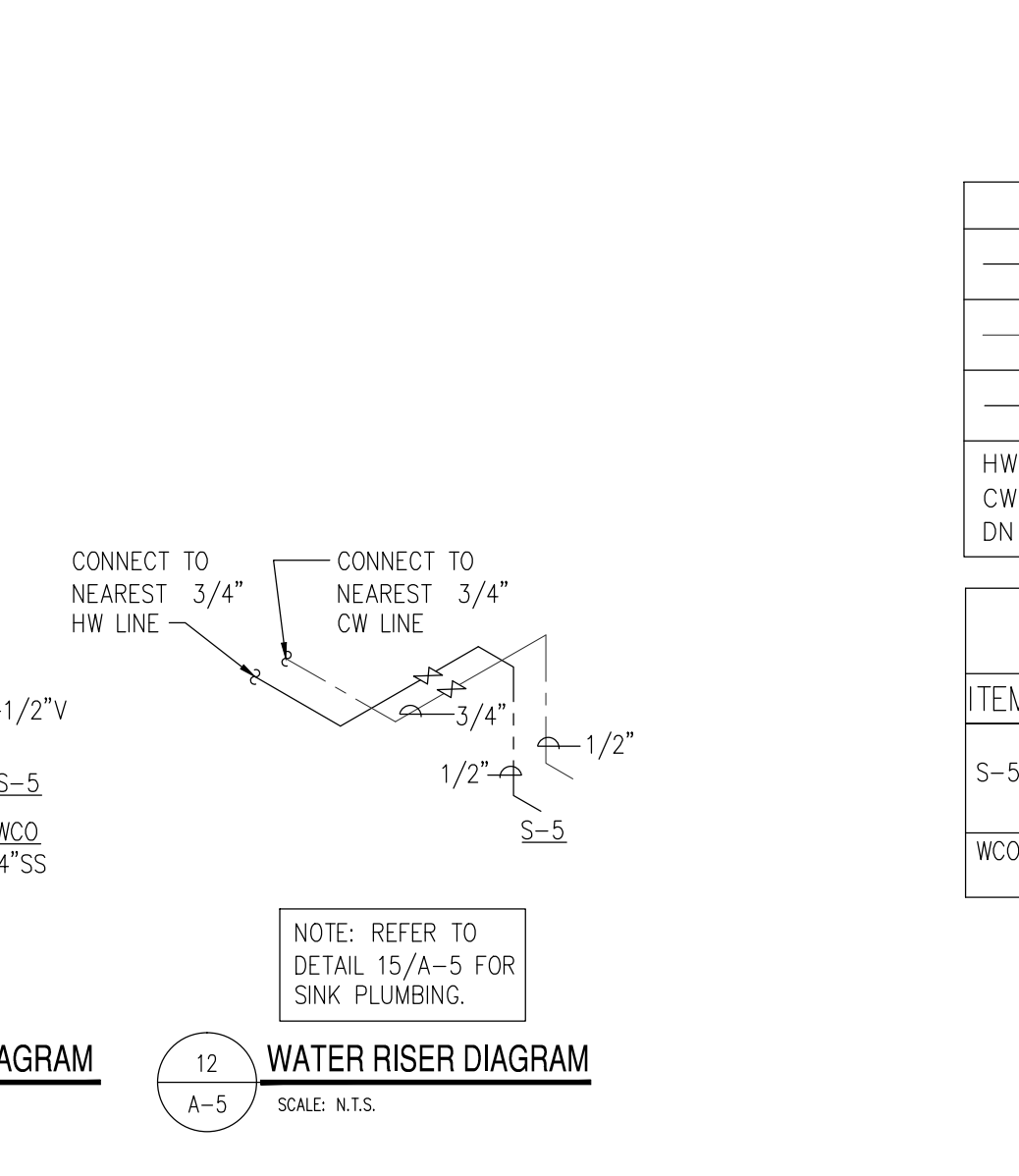
8 MEN'S RESTROOM  
 A-5 SCALE: 1/4" = 1'-0"



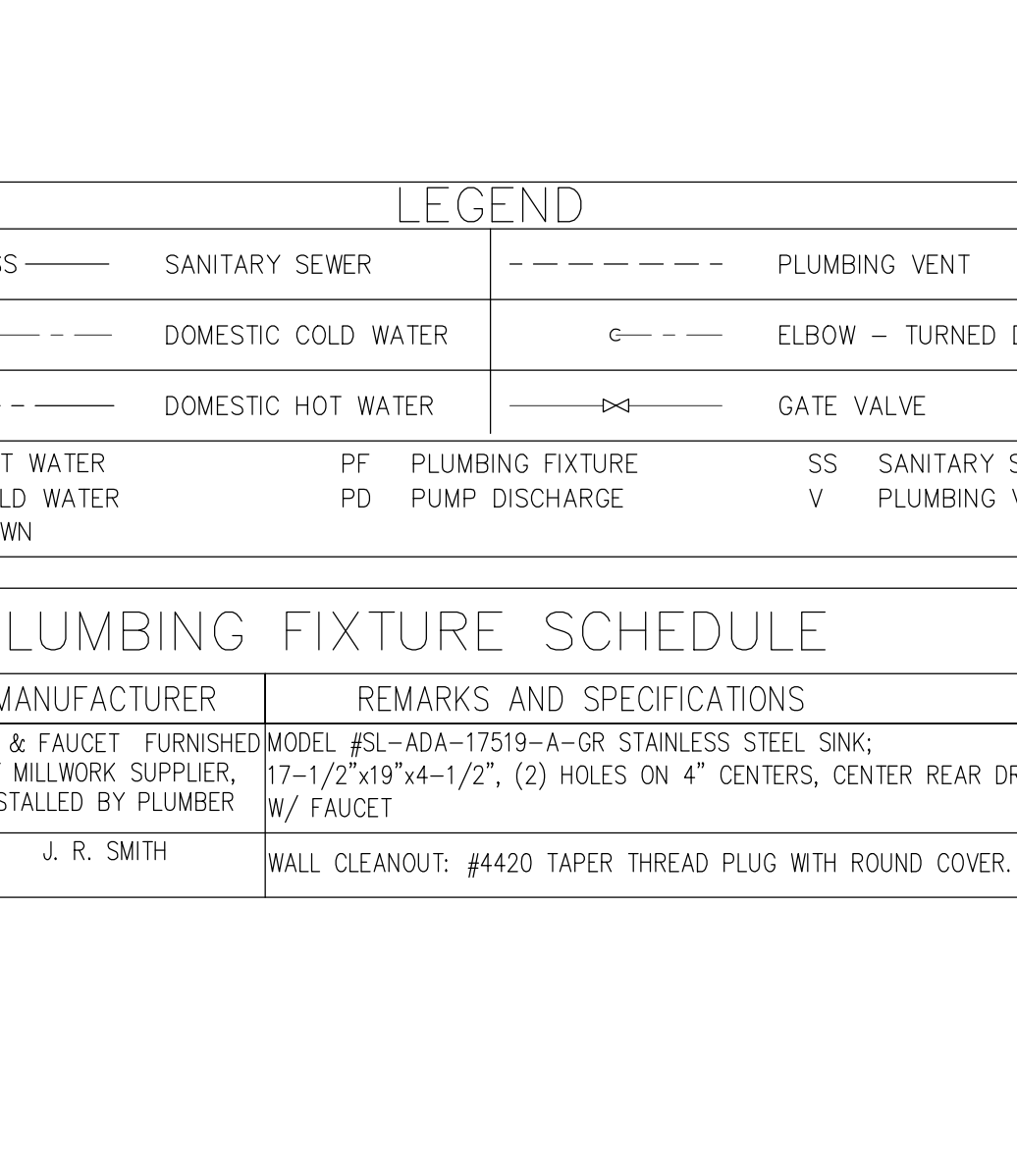
9 MEN'S RESTROOM  
 A-5 SCALE: 1/4" = 1'-0"



10 MINUTE CLINIC PLUMBING PLAN  
 A-5 SCALE: 1/4" = 1'-0"



11 WASTE VENT RISER DIAGRAM  
 A-5 SCALE: N.T.S.

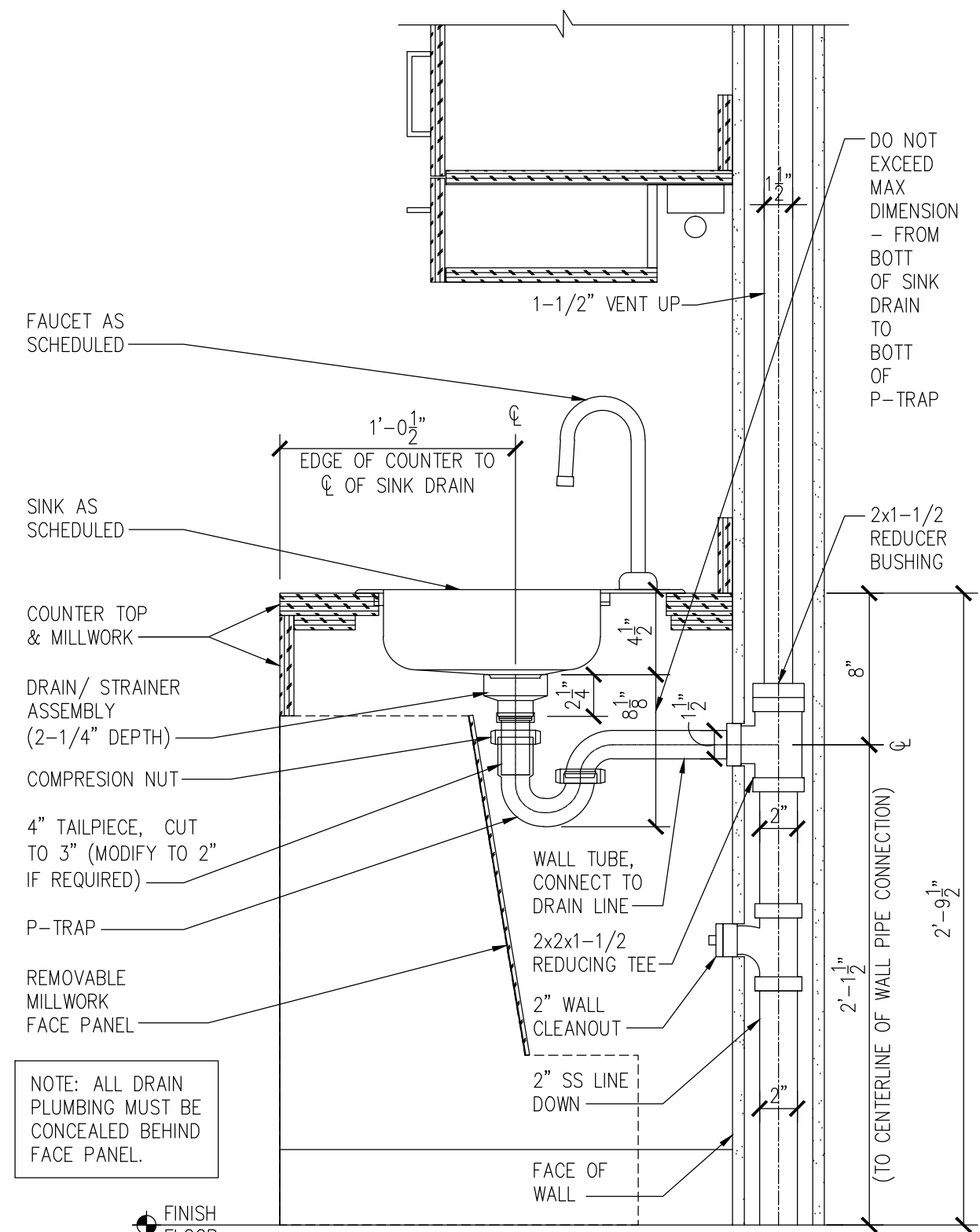


12 WATER RISER DIAGRAM  
 A-5 SCALE: N.T.S.

LEGEND			
SS	SANITARY SEWER	---	PLUMBING VENT
---	DOMESTIC COLD WATER	---	ELBOW - TURNED DOWN
---	DOMESTIC HOT WATER	---	GATE VALVE
HW	HOT WATER	PF	PLUMBING FIXTURE
CW	COLD WATER	PD	PUMP DISCHARGE
DN	DOWN	SS	SANITARY SEWER
		V	PLUMBING VENT

PLUMBING FIXTURE SCHEDULE		
ITEM	MANUFACTURER	REMARKS AND SPECIFICATIONS
S-5	SINK & FAUCET FURNISHED BY MILLWORK SUPPLIER, INSTALLED BY PLUMBER	MODEL #SL-ADA-17519-A-GR STAINLESS STEEL SINK; 17-1/2"x19"x4-1/2". (2) HOLES ON 4" CENTERS, CENTER REAR DRAIN W/ FAUCET
WCO	J. R. SMITH	WALL CLEANOUT; #4420 TAPER THREAD PLUG WITH ROUND COVER.

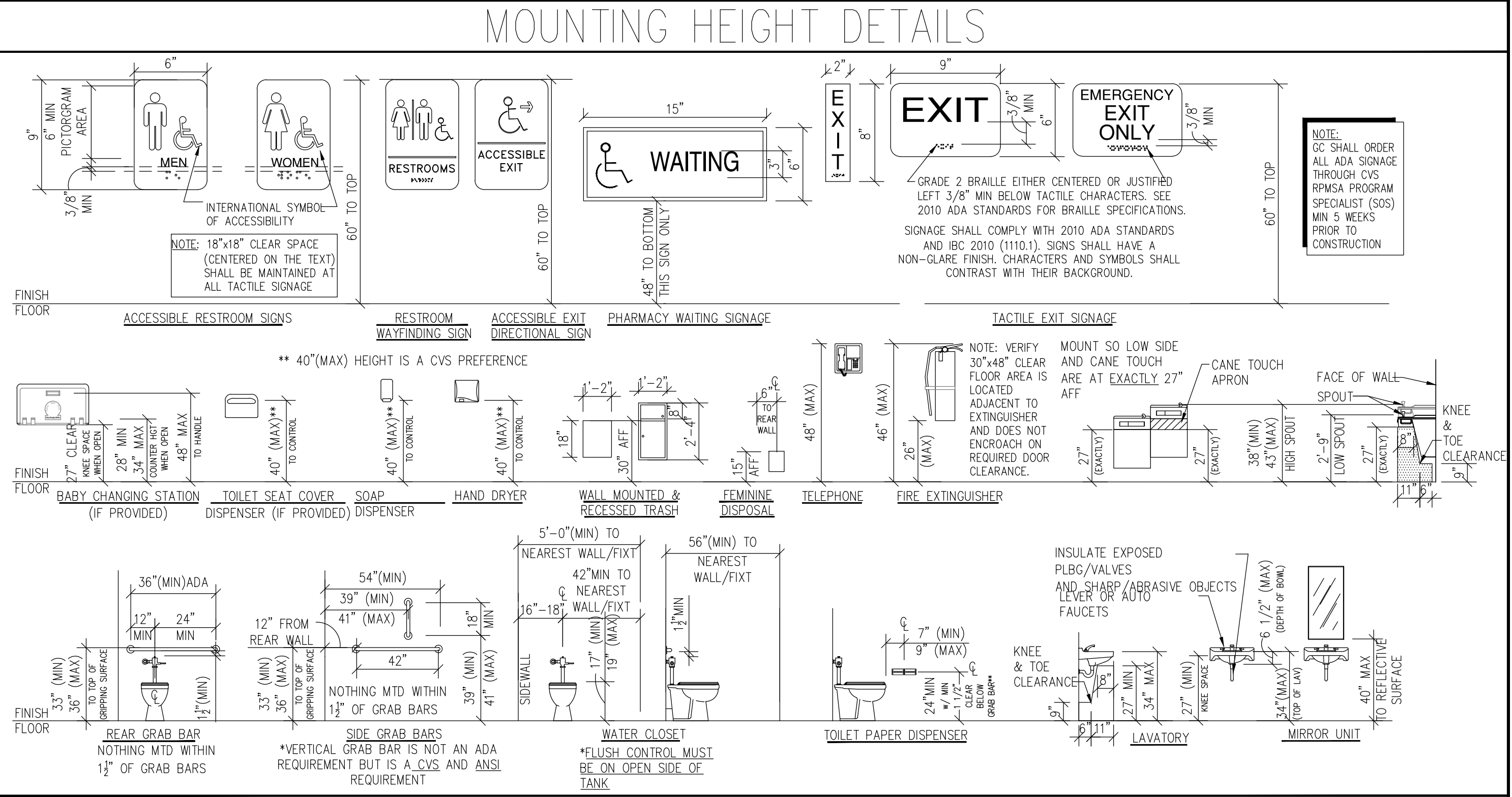


13 SINK PLUMBING SECTION  
 A-5 SCALE: 1/2" = 1'-0"

ITEM	DESCRIPTION (OR APPROVED EQUAL)
TOILET TISSUE	BRADLEY S126
DISPENSERS	GC SHALL ORDER ALL ADA SIGNAGE THROUGH CVS RPMS PROGRAM
WAYFINDING SIGNS	SPECIALIST (SOS) MIN 5 WEEKS PRIOR TO CONSTRUCTION
18" VERTICAL GRAB BAR	BRADLEY BR24B-D01360
42" GRAB BAR	BRADLEY BR24B-D01360
RECESSED WASTE	BOBIRCK B-279
WALL-MOUNT WASTE	BOBIRCK B-279
FEMINE WASTE RECEPT	GRAINGER (TOUGH GUY) 1EKC9
SOAP DISPENSER	GRAINGER (GOJO) 5W626
TOILET SEAT COVER DISPENSER	GRAINGER (TOUGH GUY) 2VEX8 (WHITE)
WARM AIR HAND DRYER	GRAINGER (TOUGH GUY) 2VEX9 (GRAY)
HAND DRYER	BRADLEY ADJUSTABLE SPEED WARM AIR HAND DRYER (BRADLEY MODEL# 2902-280000)
ADA DOOR CLOSER (FROM DH PACE)	DORMA 8616 ARP SN81
BREAKROOM FRIGID LOCKABLE	B-AU-e4761LN7-PINKL626 (FROM DH PACE)
EMPLOYEE COAT	ORDERED BY GC THRU MILLWORK
RESTROOM MIRROR	BRADLEY 781-1836
24" BASEBOARD	CADET 2F350 (208-240V ONLY)
36" BASEBOARD	CADET 2F500-1 (120V)
36" BASEBOARD HEATER	CADET 3F750-1 (120V)

**NOTE:**  
 1. REFER TO MOUNTING HEIGHT DETAILS FOR SPECIFIC DIMENSIONAL INFORMATION  
 2. G.C. SHALL INSTALL SOLID FIRE RETARDANT TREATED WOOD BLOCKING AS REQUIRED AT ALL WALL-MOUNTED RESTROOM COMPONENTS

**DOOR ADJUSTMENT NOTES**  
 (INTERIOR DOORS)  
 • CLOSING SPEED SHALL BE 5 SECONDS MIN FROM AN OPEN POSITION OF 90 DEGREES TO A POSITION OF 12 DEGREES FROM THE LATCH.  
 • MAXIMUM FORCE TO OPEN SHALL BE 5 LBS (DOES NOT APPLY TO FIRE DOORS)  
 • F CLOSER CAN NOT BE ADJUSTED INSTALL NEW CLOSER DORMA 866 ARP SN81



**SIGNAGE NOTES**  
 RAISED AND BRAILLED CHARACTERS AND PICTORIAL SYMBOL SIGNS (PICTOGRAMS) LETTERS AND NUMERALS SHALL BE RAISED 1/32" UPPER CASE, SANS SERIF TYPE AND SHALL BE ACCOMPANIED WITH GRADE 2 BRAILLE. RAISED CHARACTERS SHALL BE AT LEAST 5/8" HIGH, BUT NO HIGHER THAN 2". PICTOGRAMS ON ADA RESTROOM SIGNS SHALL BE ACCOMPANIED BY THE EQUIVALENT VERBAL DESCRIPTION PLACED DIRECTLY BELOW THE PICTOGRAM. THE BORDER DIMENSION OF THE PICTOGRAM SHALL BE 6" MINIMUM IN HEIGHT.

**FINISH AND CONTRAST:**  
 THE CHARACTERS AND BACKGROUND OF ADA RESTROOM SIGNS SHALL BE OF NON-GLARE FINISH. CHARACTERS AND SYMBOLS SHALL HAVE CONTRAST WITH THE BACKGROUND... EITHER LIGHT CHARACTERS ON A DARK BACKGROUND OR DARK CHARACTERS ON A LIGHT BACKGROUND.

**MOUNTING LOCATION AND HEIGHT:**  
 WHERE PERMANENT IDENTIFICATION IS PROVIDED FOR RESTROOMS AND SPACES, SIGNS SHALL BE INSTALLED ON THE WALL ADJACENT TO THE LATCH SIDE OF THE DOOR. AT DOUBLE LEAF DOORS SIGNS SHALL BE PLACED ON THE NEAREST ADJACENT WALL. MOUNTING LOCATION SHALL BE 48" MIN TO THE BOTTOM OF THE LOWEST TACTILE CHARACTER AND 60" MAX TO THE BOTTOM OF THE HIGHEST TACTILE CHARACTER. MOUNTING LOCATION FOR SUCH SIGNAGE SHALL BE SO THAT A PERSON MAY APPROACH WITHIN 3" IN. OF SIGNAGE WITHOUT ENCOUNTERING PROTRUDING OBJECTS OR STANDING WITHIN THE SWING OF DOOR (18" X 18" OF CLEAR SPACE CENTERED ON THE TACTILE CHARACTER). SIGNS WITH TACTILE CHARACTERS ARE PERMITTED ON THE PUSH SIDE OF DOORS WITH CLOSERS AND WITHOUT HOLD-OPEN DEVICES.

**SYMBOLS OF ACCESSIBILITY:**  
 FACILITIES AND ELEMENTS REQUIRED TO BE IDENTIFIED AS ACCESSIBLE SHALL USE THE INTERNATIONAL SYMBOL OF ACCESSIBILITY.