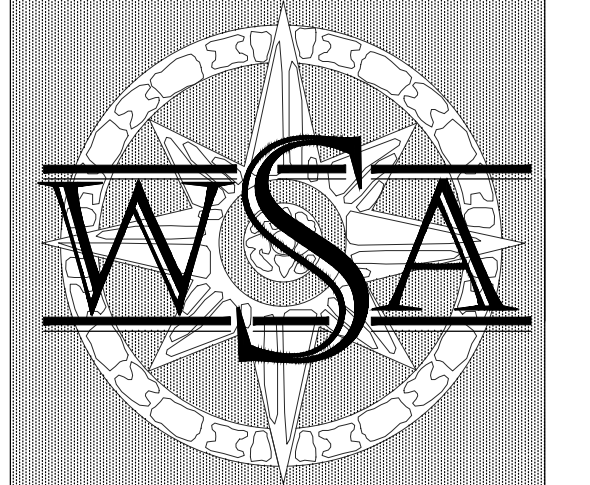
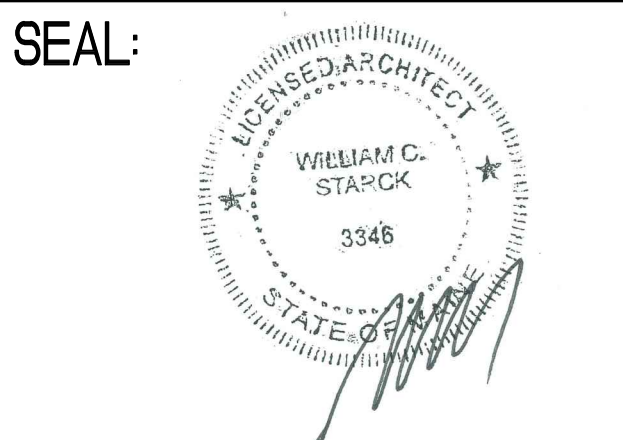


STORE NUMBER: 0329
 111 AUBURN STREET
 PORTLAND, ME 04103
 PROJECT TYPE: MINUTE CLINIC
 DEAL TYPE:

CS PROJECT NUMBER: 089586
 CAP CODE NUMBER: 00078



WILLIAM STARCK ARCHITECTS, INC.
 126 COVE STREET
 FALL RIVER, MASSACHUSETTS 02720
 TEL: 508.679.5733
 FAX: 508.672.8556
 E-MAIL: STARCK@STARCKARCHITECTS.COM
 WEBSITE: WWW.STARCKARCHITECTS.COM



CONSULTANT:

REVISIONS:

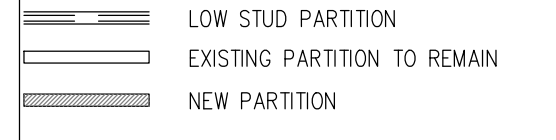
PROJECT MANAGER: MHA
 LAYOUT COORD: SAM
 PROJECT ARCHITECT: WSA
 PLANNING MGR: LS
 DRAWING BY: PP
 DATE: 07/13/15
 DRAWING SCALE: AS NOTED

TITLE: **FLOOR PLANS AND DETAILS**

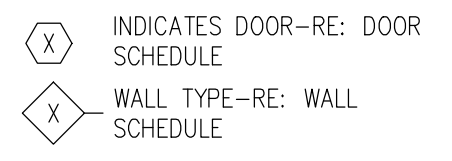
SHEET NUMBER: **A-1**

COMMENTS:

WALL LEGEND:



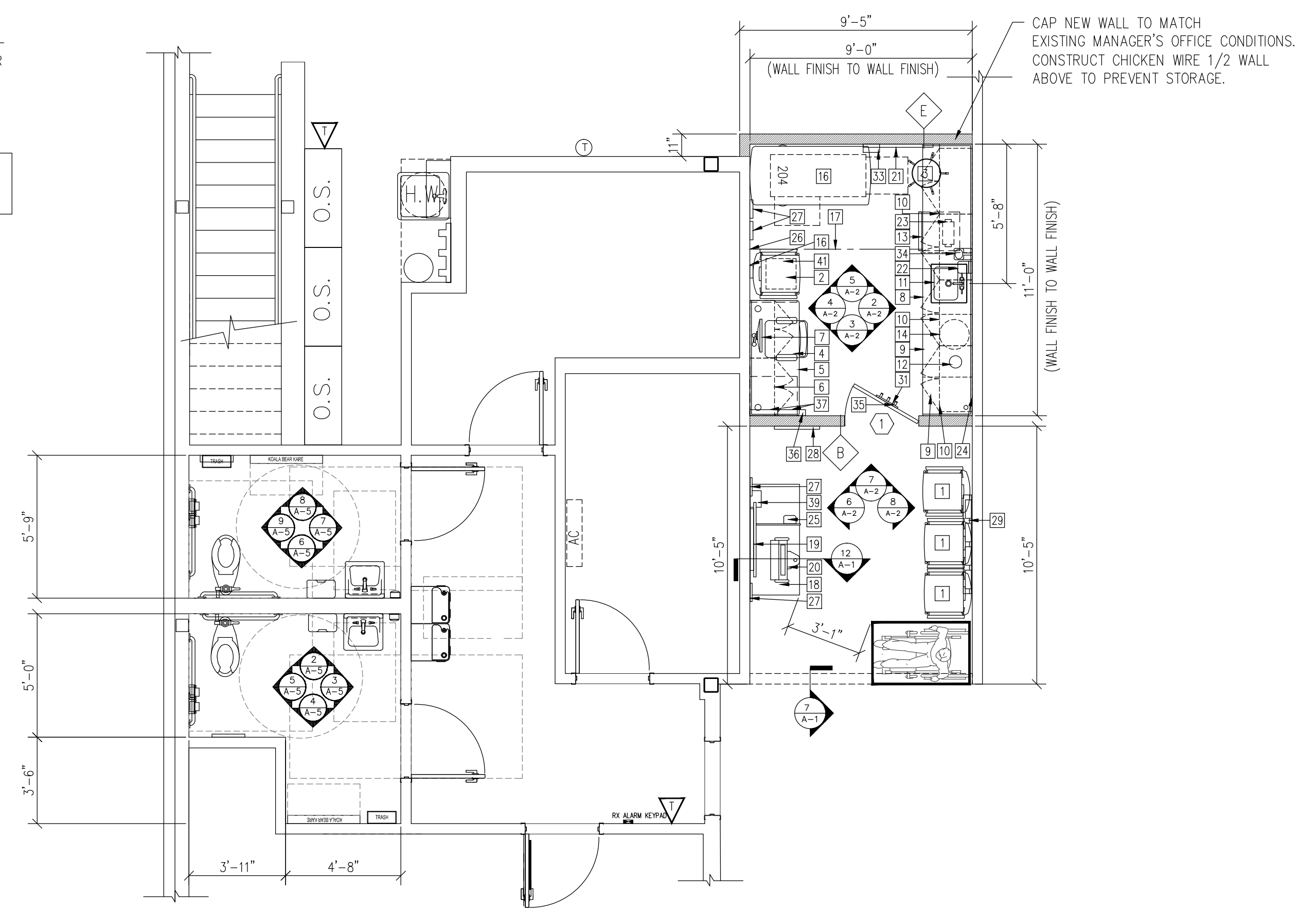
LEGEND



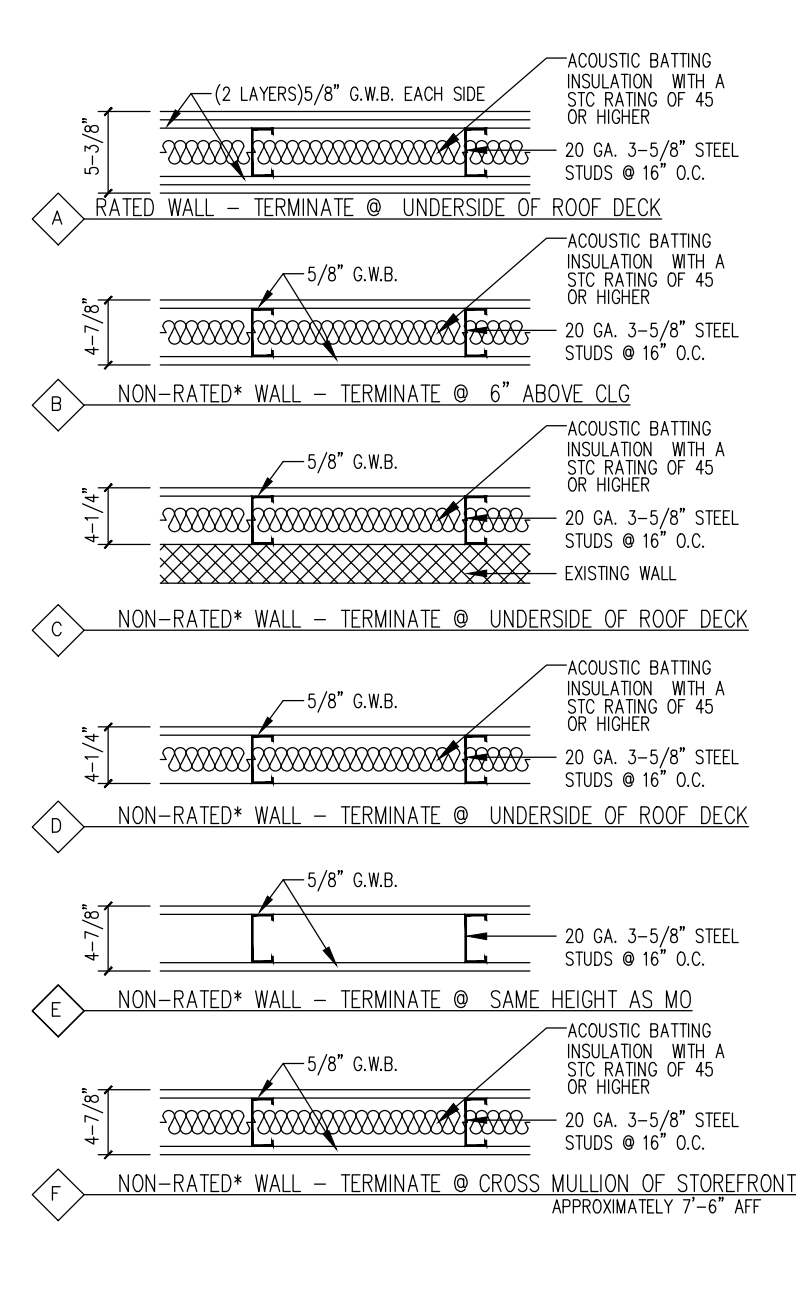
NOTE: RATED WALLS TO BE SPECIFIED AS CODES/CIRCUMSTANCES APPLY.

GENERAL G.C. NOTES:

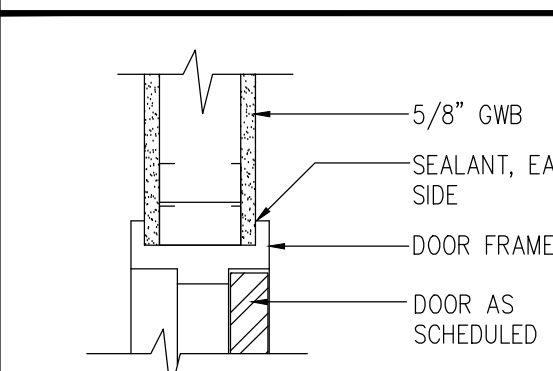
1. G.C. AND/OR C.P.M. REQUIRED TO ORDER CERTAIN SPECIFIED EQUIPMENT USING THE M.C. ORDER GUIDE VIA S.O.S. ORDER GUIDE #7. REFER TO ORDER GUIDE FOR SPECIFIC S.O.S. EQUIPMENT TO ORDER.



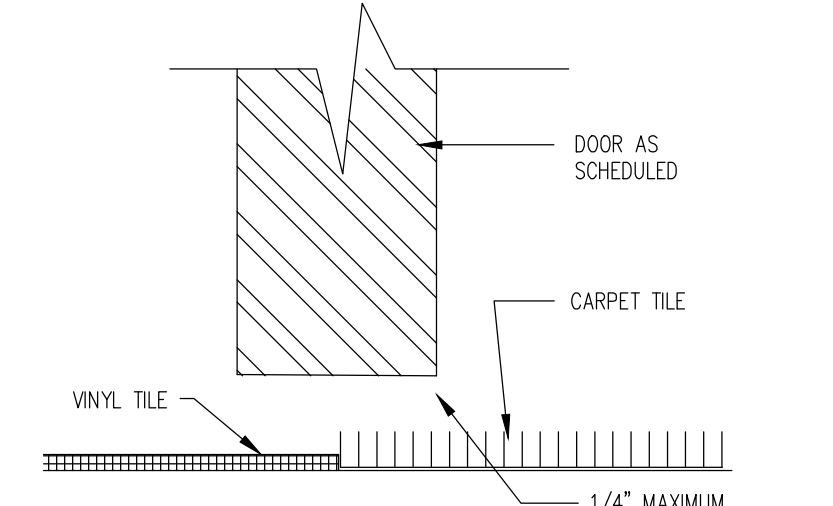
1 MINUTE CLINIC/RESTROOM FLOOR PLAN
 SCALE: 1/4" = 1'-0"



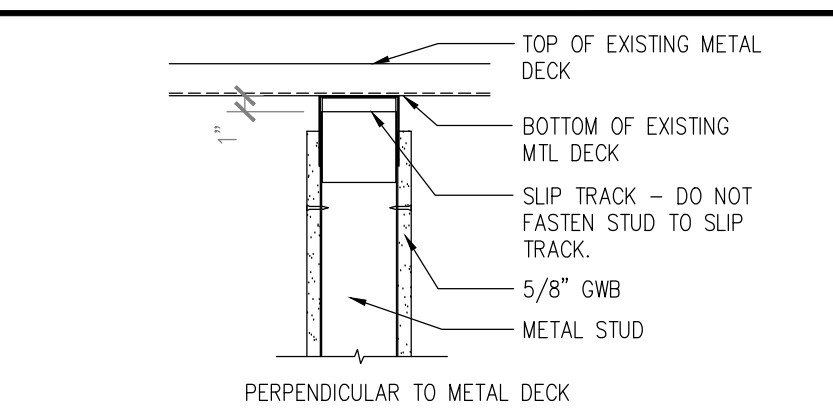
2 WALL SECTION
 SCALE: 1/4" = 1'-0"



3 JAMB/HEAD SIM
 SCALE: 1 1/2" = 1'-0"



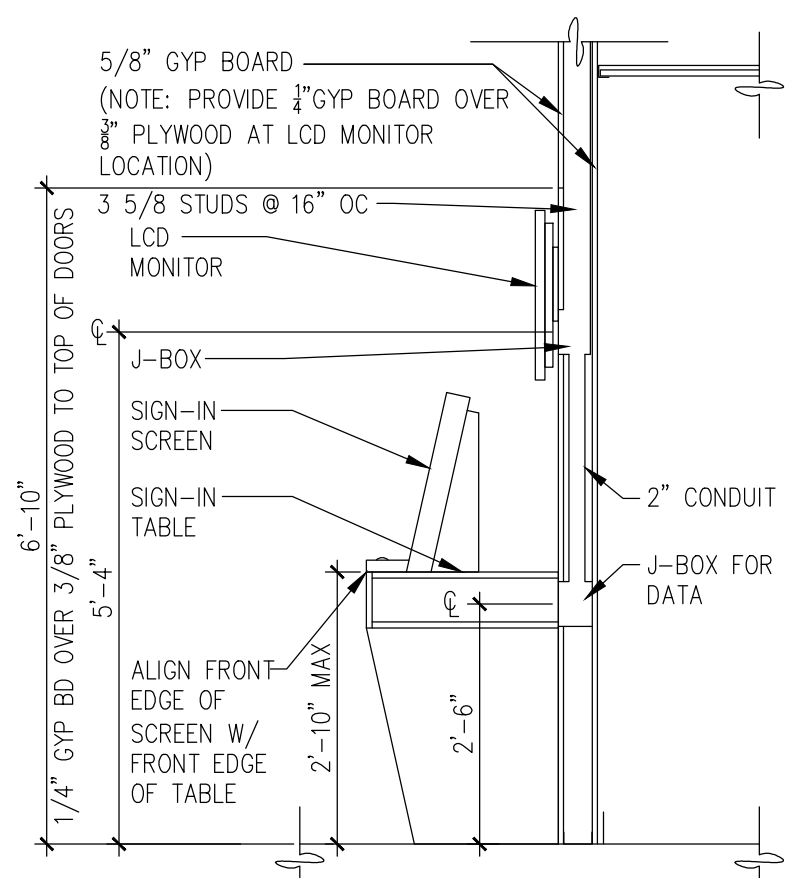
4 UNDERCUT DETAIL
 SCALE: 1/4" = 1'-0"



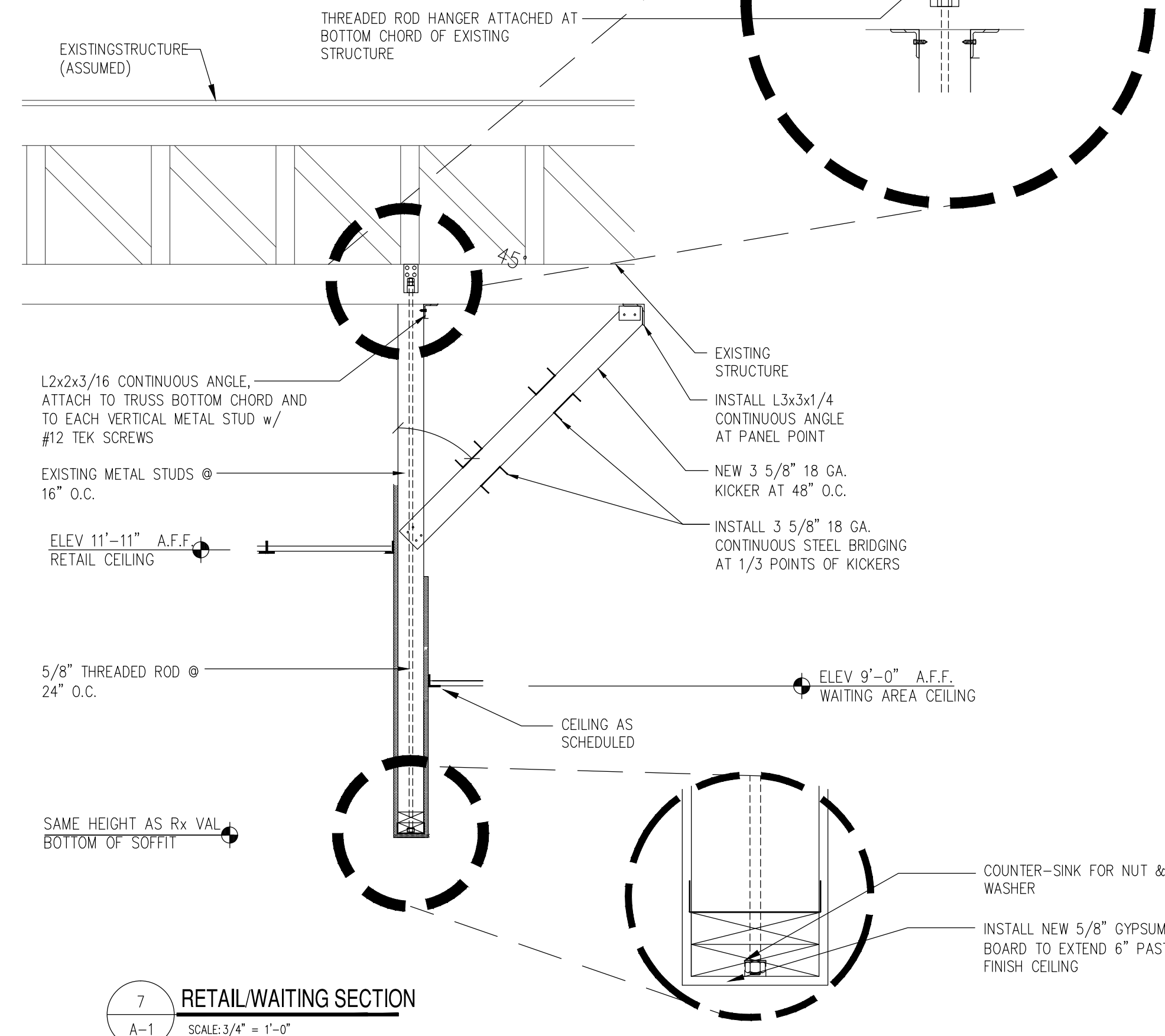
5 SLIPJOINT CONNECTION
 SCALE: 1/4" = 1'-0"

FLOOR PLAN NOTES:

- 1) ALL DRYWALL JOINTS SHALL BE TAPED WITH A MINIMUM OF TWO COATS JOINT COMPOUND. ALL COMPOUND JOINTS ARE TO BE WET-SANDED ONLY.
- 2) ALL DIMENSIONS SHOWN ARE FROM FINISH SURFACE TO FINISH SURFACE.
- 3) INSTALL END PANELS, WALL UNITS (INCLUDING TOP RAIL CLIPS ON EXISTING WALL UNITS ABOVE 60" WITHOUT HEADERS, AND WOOD STRAPPING ON NEW WALL UNITS AND UNITS WITH HEADERS) POST EXTENDERS AND LIGHT HEADERS AS PER DWG. F-1 AND P.M.
- 4) MOUNT FIRE EXTINGUISHERS @ 3'-10" A.F.F. (SUPPLIED BY TENANT).
- 5) ALL WORK PERFORMED IN ACCORDANCE WITH ALL LOCAL & STATE BLDG CODES.
- 6) GENERAL CONTRACTOR RESPONSIBLE TO UNLOAD ALL DELIVERIES TO JOB SITE & REMOVAL OF ALL DEBRIS CAUSED BY THEIR WORK.
- 7) SEE BELOW FOR FINISH INFORMATION.
- 8) CLEAN CEILING SUPPLY AND RETURN GRILLES.
- 9) ALL WORK TO BE VERIFIED WITH P.M. PRIOR TO START OF WORK.
- 10) ALL WOOD THROUGHOUT THIS PROJECT SHALL BE FIRE RETARDANT TREATED.



6 WALL SECTION
 SCALE: 1/2" = 1'-0"

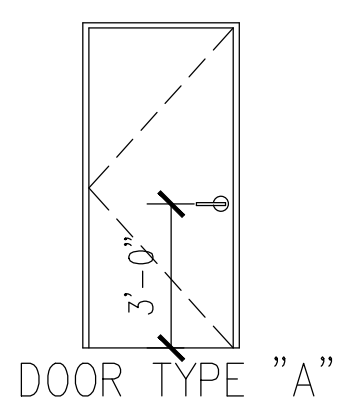


7 RETAIL/WAITING SECTION
 SCALE: 3/4" = 1'-0"

EQUIPMENT SCHEDULE		EQUIPMENT	
1	CLINIC WAITING CHAIRS	20	SIGN-IN SCREEN
2	PATIENT WAITING CHAIR	21	34" INTEGRATED WALL PANEL
3	MEDICAL ROLLING STOOL	22	SOAP DISPENSER (BOTTOM OF DISPENSER MOUNTED AT 3'-3" AFF.)
4	NURSE PRACTITIONER'S CHAIR	23	PAPER TOWEL DISPENSER (MOUNT BELOW UPPER CABINET)
5	NURSE PRACTITIONER'S DESK (W/ UNDERMOUNT KEYBOARD SHELF & PRINTER CABINET) [L2] FINISH [L3] TOP	24	LICENSE WALLFRAME (LOCATED IN MAIN CLINIC ONLY)
6	NURSE PRACTITIONER'S UPPER CABINET (EACH W/ DRAWER & 2 ADJUSTABLE SHELVES) [L2] FINISH	25	HAND SANITIZER DISPENSER
7	COMPUTER MONITOR W/ TOP MOUNTED MONITOR ARM	26	CURTAIN TIE BACK (SINGLE HOOK)
8	COUNTERTOP (W/ TRASH HOLE & SINK HOLE CUTOUT) [L3] FINISH	27	SILVER FRAMES (9"x12") RE: ELEVATION FOR QUANTITIES
9	BASE CABINETS EACH: (1) BASE CABINET W/ FULL DRAWER & SHORT DRAWER (1) BASE CABINET W/ FULL DRAWER & 2 SHELVES [L2] FINISH	28	GRAPHICS PANEL (19"x27-1/2")
10	UPPER WALL CABINET UNITS W/ 2 ADJUSTABLE SHELVES, DRAWER & UNDER CABINET LIGHT FIXTURE [L2] FINISH	29	SHelf W/ FRAMES
11	17-1/2"x 19"x 4-1/2" STAINLESS STEEL SINK & FAUCET	30	NOT USED
12	TRASH HOLE	31	3 COAT HOOK (RETRACTABLE)
13	UNDERCOUNTER REFRIGERATOR	32	SINGLE SIGN IN TABLE
14	DRAIN PUMP LOCATION IF REQUIRED	33	BP INFLATION SYSTEM BASKET
15	COAT HOOKS	34	RECOVERY CONTAINER W/ FRONT WALL MOUNT BRACKET & LOCK
16	EXAMINATION TABLE: MODEL #204	35	CLINIC DOOR SIGN
17	PRIVACY CURTAIN - PROVIDE CURTAIN AND TRACK. PROVIDE ALL REQUIRED HARDWARE FOR COMPLETE INSTALLATION.	36	BLACK FRAMES (SIZE AS INDICATED) TOTAL 3
18	DOUBLE SIGN IN TABLE [L1] FINISH	37	WALL MOUNTED FILE FOLDER - MOUNT TO SUPPORT 10 LBS.
19	LCD MONITOR (PEERLESS FLAT WALL MOUNT SF650)	38	MINUTE CLINIC HOURS SIGN
		39	BROCHURE HOLDER - WALL MOUNT TO SUPPORT 20 LBS.
		40	10" DEEP STORAGE CABINET (LOCATE IN SECONDARY CLINIC ONLY) [L2] FINISH
		41	REMOTE DISPLAY DIGITAL SCALE (IN CT & NJ ONLY)

DOOR AND FRAME SCHEDULE		DOOR		FRAME		FIRE RATING LABEL	HARDWARE SET NO.	NOTES	
TAG	TYPE	WD	HGT	THK	MATL				DETAIL
1	A	3'-0"	6'-8"	1 3/4"	WD.	H.M.	3/A-1	4/A-1	6, 17, 18, 19.

DOOR FRAMES
 UNIVERSAL DRYWALL FRAME TO FIT NEW WALL CONSTRUCTION AS MANUFACTURED BY AMWELD 2600 SERIES OR APPROVED EQUAL.
 A. GENERAL: ANSI A250.8; CONCEAL FASTENINGS, UNLESS OTHERWISE INDICATED.
 B. FRAME STEEL SHEET THICKNESS:
 1. 0.042-INCH-FOR LEVEL 1 STEEL DOORS AND WOOD DOORS WHERE INDICATED.
 2. 0.053-INCH-FOR OPENINGS WIDER THAN 48 INCHES AND LEVEL 2 STEEL DOORS.
 C. DOOR SILENCERS: THREE SILENCERS ON SINGLE-DOOR FRAMES AND TWO SILENCERS ON DOUBLE-DOOR FRAMES.
 D. PLASTER GUARDS: 0.016-INCH-THICK, STEEL SHEET PLASTER GUARDS OR MORTAR BOXES TO CLOSE OFF INTERIOR OF OPENINGS.



HARDWARE SET NO. 10 MINUTE CLINIC		
1-1/2	PR. BUTTS NRP	NATIONAL ACCOUNT
1	LOCKSET STOREROOM	NATIONAL ACCOUNT
3	SILENCERS	NATIONAL ACCOUNT

