

SIGNAGE SCHEDULE - "S"				
DESIGN ID	COUNT	DESCRIPTION	RESP.	COMMENTS
SIGNAGE - DISK				
X0060	2	SIGN - DISK DF ILLUMINATED SUSPENDED EVOLVED - 24IN 610MM	VD	REMOVE EXISTING VINYL GRAPHIC AND ACRYLIC'S FROM EXISTING LOGO SIGN, BOTH SIDES. PRESERVE SIGN CASING AND HARDWARE FOR REUSE WITH NEW VINYL GRAPHIC AND ACRYLIC. REMOVE LIGHT IN PREPARATION FOR NEW LED FIXTURE. BY HILTON DISPLAYS.

### EXTERIOR ELEVATION NOTES

A. GENERAL CONTRACTOR TO COORDINATE AND SCHEDULE SIGNAGE INSTALLATION WITH THE SIGNAGE CONTRACTOR PROVIDING A MINIMUM SCHEDULING NOTICE OF 4 WEEKS AND 1 WEEK PRIOR TO SCHEDULED DATE OF INSTALLATION. STARBUCKS CONSTRUCTION MANAGER TO PROVIDE GENERAL CONTRACTOR WITH SIGNAGE CONTRACTOR CONTACT INFORMATION.

B. GENERAL CONTRACTOR SHALL COORDINATE WITH ELECTRICAL CONTRACTOR TO FURNISH AND INSTALL ELECTRICAL CIRCUITS INCLUDING ALL CONDUIT, WIRE, CONNECTIONS, AND BREAKER AT PANEL BOARD NECESSARY TO SERVE SIGNAGE.

C. GENERAL CONTRACTOR TO PROVIDE FIRE TREATED WOOD STUD BLOCKING, OR EQUIVALENT TO SUPPORT SIGNAGE.

D. SIGNAGE CONTRACTOR SHALL VERIFY SIZE AND LOCATION OF ANY AND ALL ALLOWABLE MONUMENT OR POLE SIGNAGE WITH LANDLORD AND PROVIDE SHOP DRAWING(S) PRIOR TO FABRICATION TO STARBUCKS DESIGNER FOR APPROVAL.

E. SIGNAGE CONTRACTOR TO INSTALL SIGNAGE IN COMPLIANCE WITH LOCAL CODES AND OBTAIN PERMIT AND LANDLORD APPROVAL.

F. SIGNAGE CONTRACTOR TO SUPPLY SHOP DRAWINGS TO STARBUCKS CONSTRUCTION MANAGER AND TO THE GENERAL CONTRACTOR AS NEEDED. GENERAL CONTRACTOR TO NOTIFY STARBUCKS CONSTRUCTION MANAGER IMMEDIATELY IF SHOP DRAWINGS OR INSTALLATION IS IN DISCREPANCY WITH STARBUCKS ARCHITECTURAL DRAWINGS.

G. GENERAL CONTRACTOR TO CLEAN, PATCH AND REPAIR EXISTING EXTERIOR AS REQUIRED.



©2011 STARBUCKS COFFEE COMPANY

**STARBUCKS COFFEE COMPANY**  
2401 UTAH AVENUE SOUTH  
SEATTLE, WASHINGTON 98134  
(206) 318-1575

THESE DRAWINGS AND SPECIFICATIONS ARE CONFIDENTIAL AND SHALL REMAIN THE SOLE PROPERTY OF STARBUCKS CORPORATION, WHICH IS THE OWNER OF THE COPYRIGHT IN THIS WORK. THEY SHALL NOT BE REPRODUCED (IN WHOLE OR IN PART), SHARED WITH THIRD PARTIES OR USED IN ANY MANNER ON OTHER PROJECTS OR EXTENSIONS TO THIS PROJECT WITHOUT THE PRIOR WRITTEN CONSENT OF STARBUCKS CORPORATION. THESE DRAWINGS AND SPECIFICATIONS ARE INTENDED TO EXPRESS DESIGN INTENT FOR A PROTOTYPICAL STARBUCKS STORE (WHICH IS SUBJECT TO CHANGE AT ANYTIME) AND DO NOT REFLECT ACTUAL SITE CONDITIONS. NEITHER PARTY SHALL HAVE ANY OBLIGATION NOR LIABILITY TO THE OTHER (EXCEPT STATED ABOVE) UNTIL A WRITTEN AGREEMENT IS FULLY EXECUTED BY BOTH PARTIES.

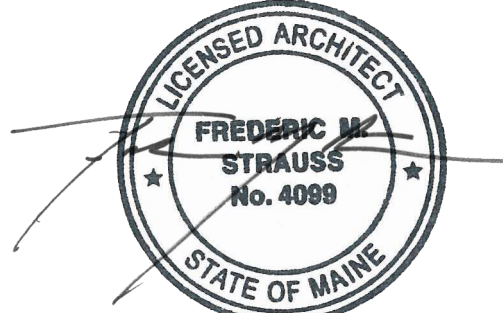
### SHEET NOTES

- (2) EXTERIOR WATERMARK TO REMAIN.
- LOGO DISK SIGNAGE (24" DIAMETER) TO BE UPDATED (BOTH SIDES). REMOVE EXISTING VINYL, GRAPHIC AND ACRYLICS FROM EXISTING LOGO, BOTH SIDES. PRESERVE SIGN CASING AND HARDWARE FOR REUSE WITH NEW VINYL, GRAPHIC AND ACRYLIC. REMOVE LIGHT IN PREPARATION FOR NEW LED FIXTURE.
- NEW EXTERIOR FURNITURE. SEE FF&E PLAN FOR ADDITIONAL INFORMATION.
- EXISTING HANGING SIGN TO REMAIN (DOUBLE SIDED).

**T | P | G**  
ARCHITECTURE

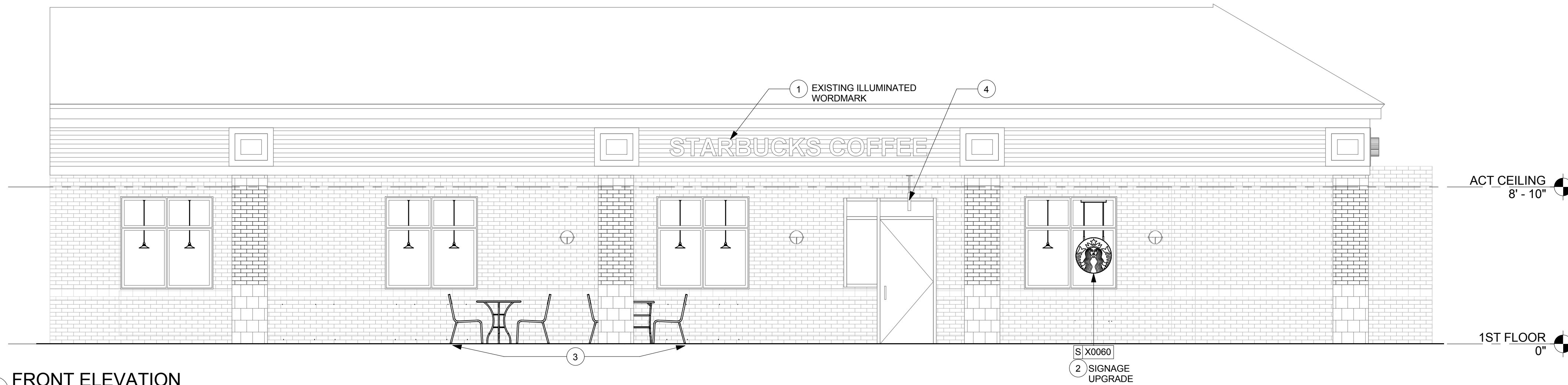
**TPG Architecture, LLP**  
360 Park Avenue, South, New York, New York 10010  
212 768 0800 212 768 1597 fax  
www.tpgarchitecture.com

Frederic M. Strauss

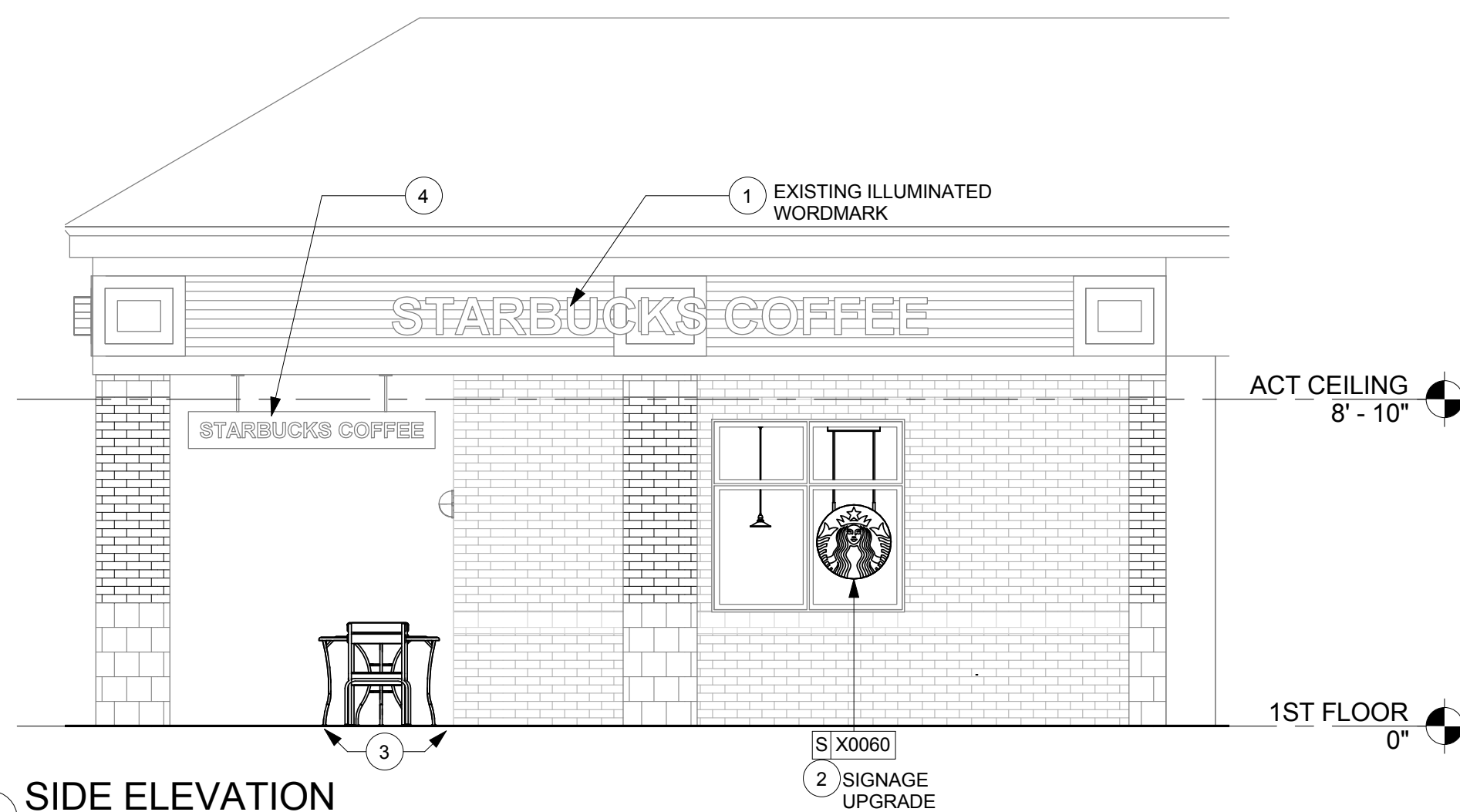


ME License No. 4099  
Architect of Record

Revision Schedule			
Rev	Date	By	Description



**1 FRONT ELEVATION**  
Scale: 1/4" = 1'-0"



**2 SIDE ELEVATION**  
Scale: 1/4" = 1'-0"

PROJECT NAME:  
**NORTHGATE PLAZA**

PROJECT ADDRESS:  
**91 AUBURN STREET,  
PORTLAND ME 04103**

STORE #: 2830  
PROJECT #: 22764-021  
CONCEPT:  
PALETTE:  
ISSUE DATE: 12/19/2013  
DESIGN MANAGER: Eta Kliger  
LEED® AP:  
PRODUCTION DESIGNER: AH  
CHECKED BY: Allison Stadnyck

SHEET TITLE:  
**EXTERIOR ELEVATIONS**

SCALE: 1/4" = 1'-0"

SHEET NUMBER:  
**A-2001**