



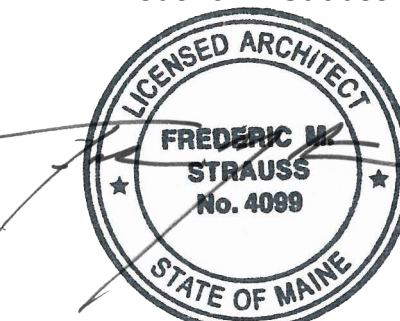
**STARBUCKS COFFEE COMPANY**  
 2401 UTAH AVENUE SOUTH  
 SEATTLE, WASHINGTON 98134  
 (206) 318-1575

THESE DRAWINGS AND SPECIFICATIONS ARE CONFIDENTIAL AND SHALL REMAIN THE SOLE PROPERTY OF STARBUCKS CORPORATION, WHICH IS THE OWNER OF THE COPYRIGHT IN THIS WORK. THEY SHALL NOT BE REPRODUCED (IN WHOLE OR IN PART), SHARED WITH THIRD PARTIES OR USED IN ANY MANNER ON OTHER PROJECTS OR EXTENSIONS TO THIS PROJECT WITHOUT THE PRIOR WRITTEN CONSENT OF STARBUCKS CORPORATION. THESE DRAWINGS AND SPECIFICATIONS ARE INTENDED TO EXPRESS DESIGN INTENT FOR A PROTOTYPICAL STARBUCKS STORE (WHICH IS SUBJECT TO CHANGE AT ANY TIME) AND DO NOT REFLECT ACTUAL SITE CONDITIONS. NEITHER PARTY SHALL HAVE ANY OBLIGATION NOR LIABILITY TO THE OTHER (EXCEPT STATED ABOVE) UNTIL A WRITTEN AGREEMENT IS FULLY EXECUTED BY BOTH PARTIES.

**T P G**  
 ARCHITECTURE

**TPG Architecture, LLP**  
 360 Park Avenue, South, New York, New York 10010  
 212 768 0800 212 768 1597 fax  
 www.tpgarchitecture.com

Frederic M. Strauss



ME License No. 4099  
 Architect of Record

Revision Schedule			
Rev	Date	By	Description

PROJECT NAME:  
**NORTHGATE PLAZA**

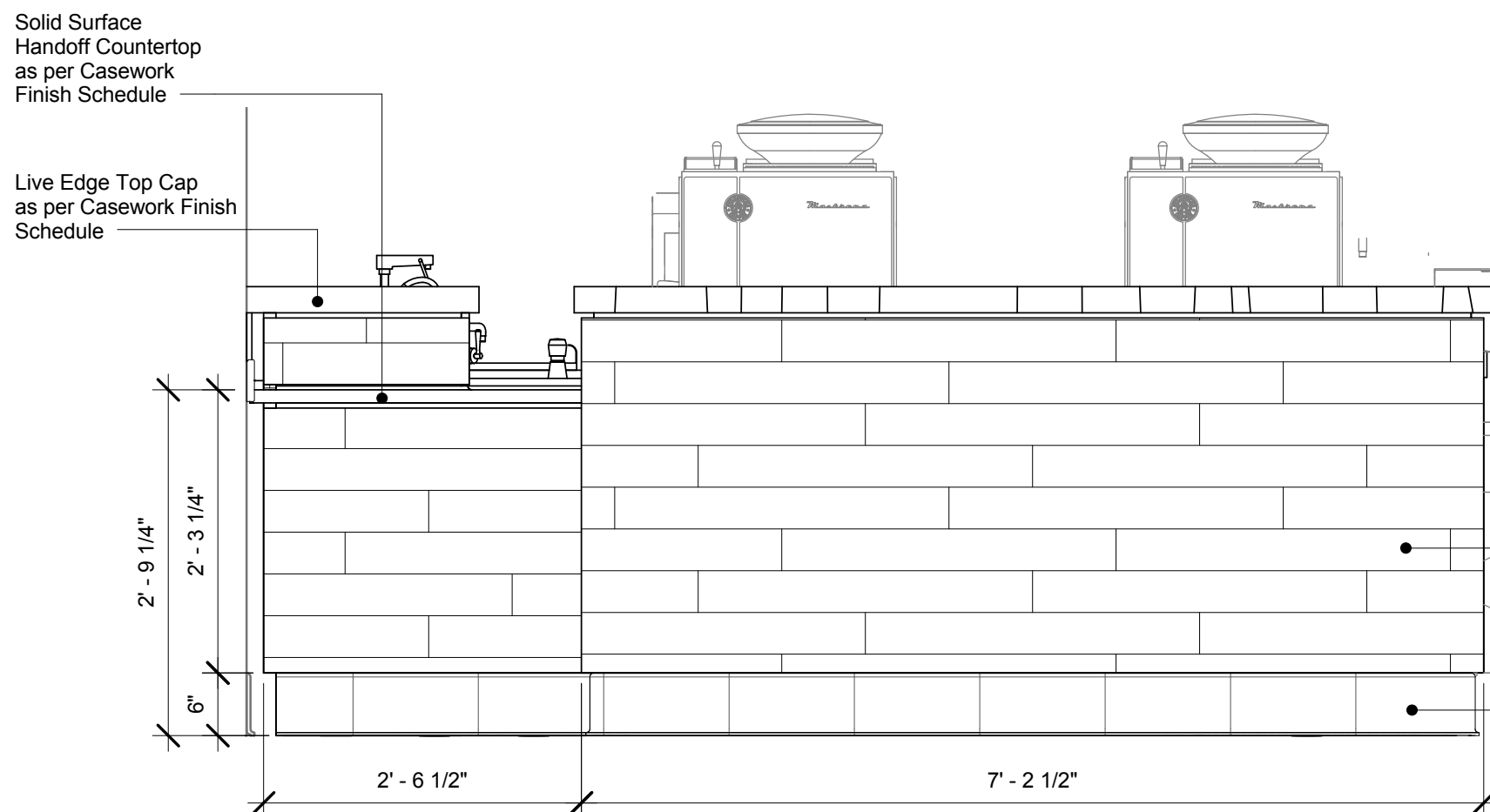
PROJECT ADDRESS:  
 91 AUBURN STREET,  
 PORTLAND ME 04103

STORE #: 2830  
 PROJECT #: 22764-021  
 CONCEPT:  
 PALETTE:  
 ISSUE DATE: 12/19/2013  
 DESIGN MANAGER: Ela Kliger  
 LEED® AP:  
 PRODUCTION DESIGNER: AH  
 CHECKED BY: Allison Stadnyck

SHEET TITLE:  
**DESIGN DETAILS**

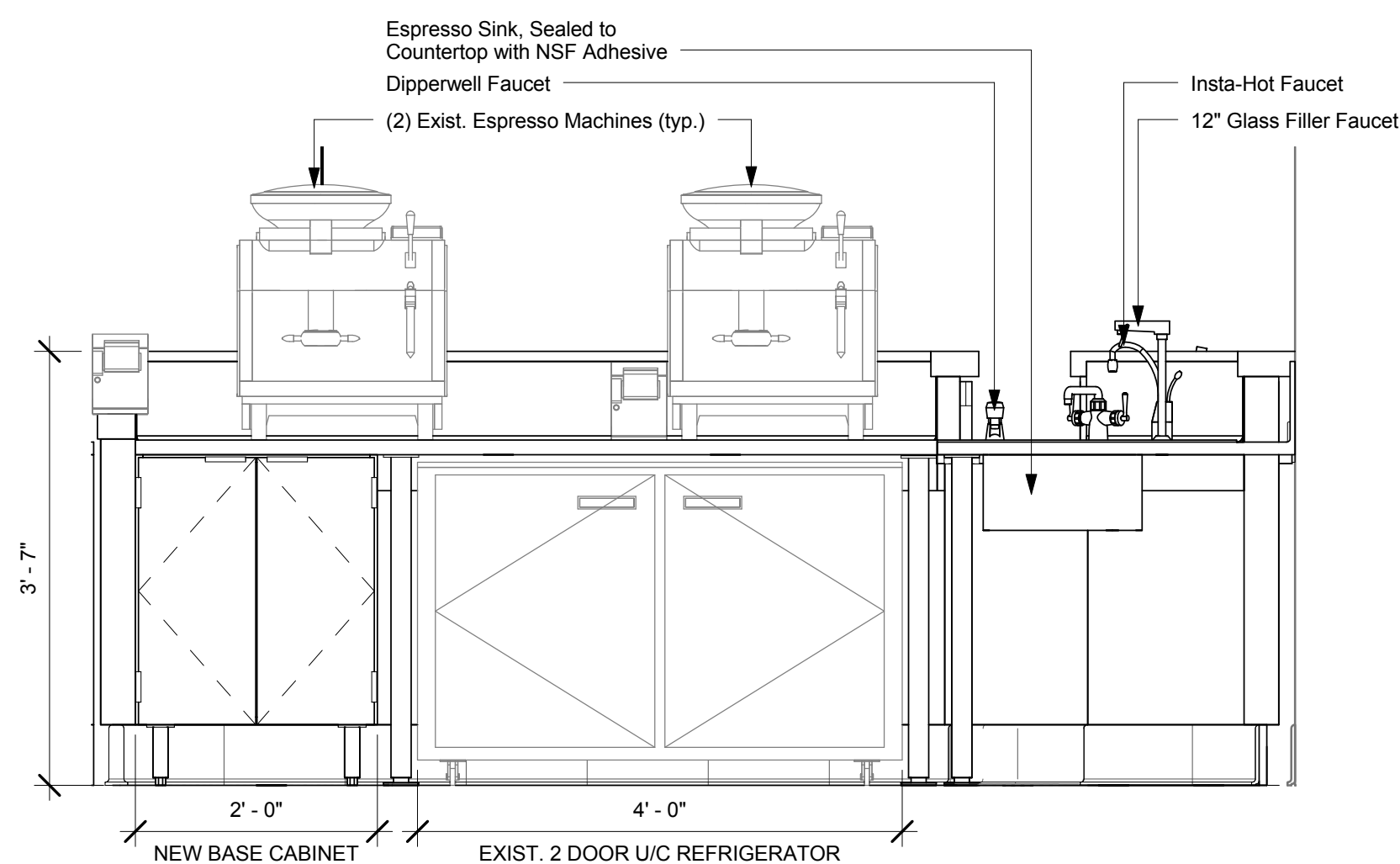
SCALE: 3/4" = 1'-0"

SHEET NUMBER:  
**1-5004**



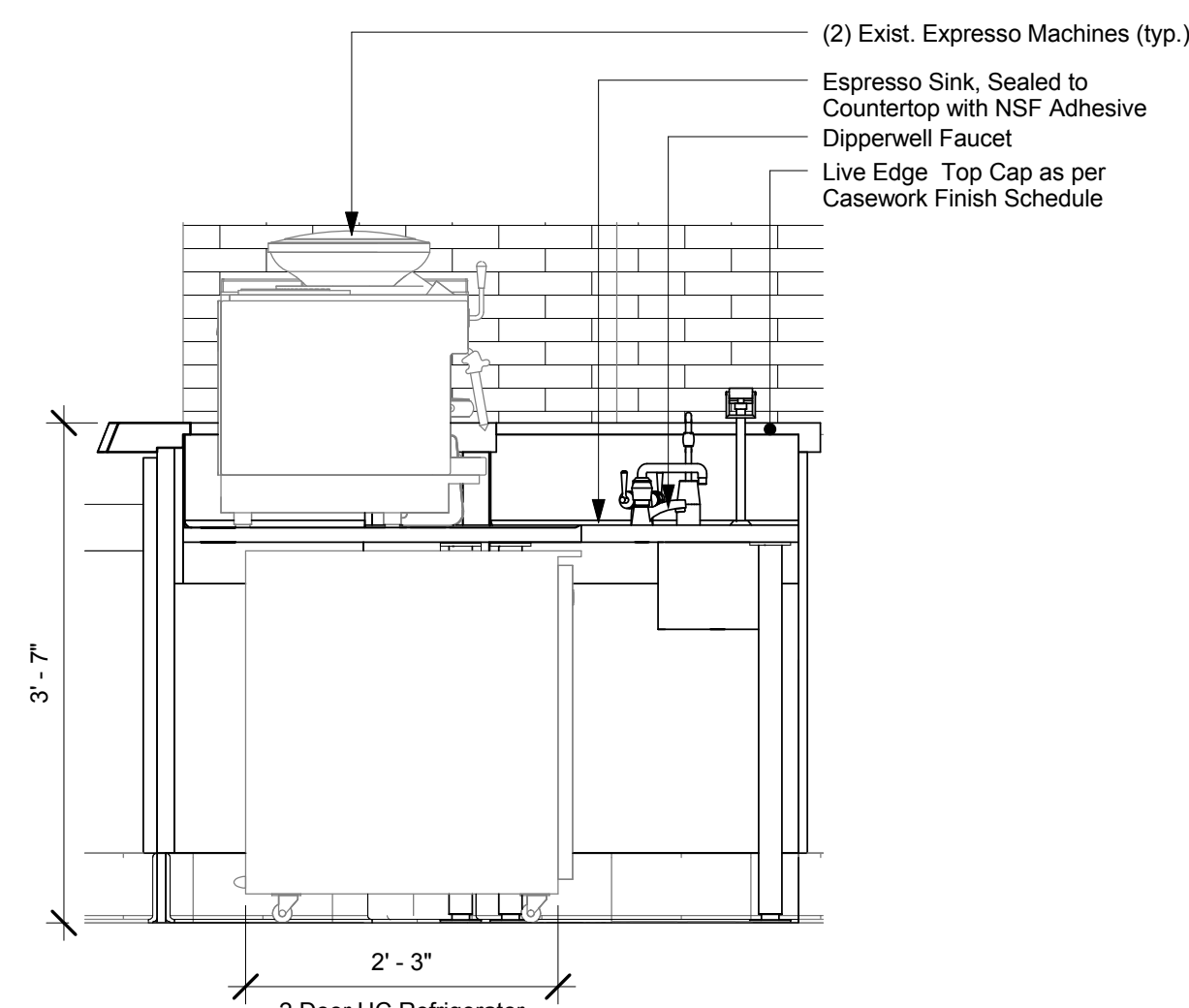
**1 EXPRESSO BAR - ELEVATION (CUSTOMER'S SIDE)**

Scale: 3/4" = 1'-0"



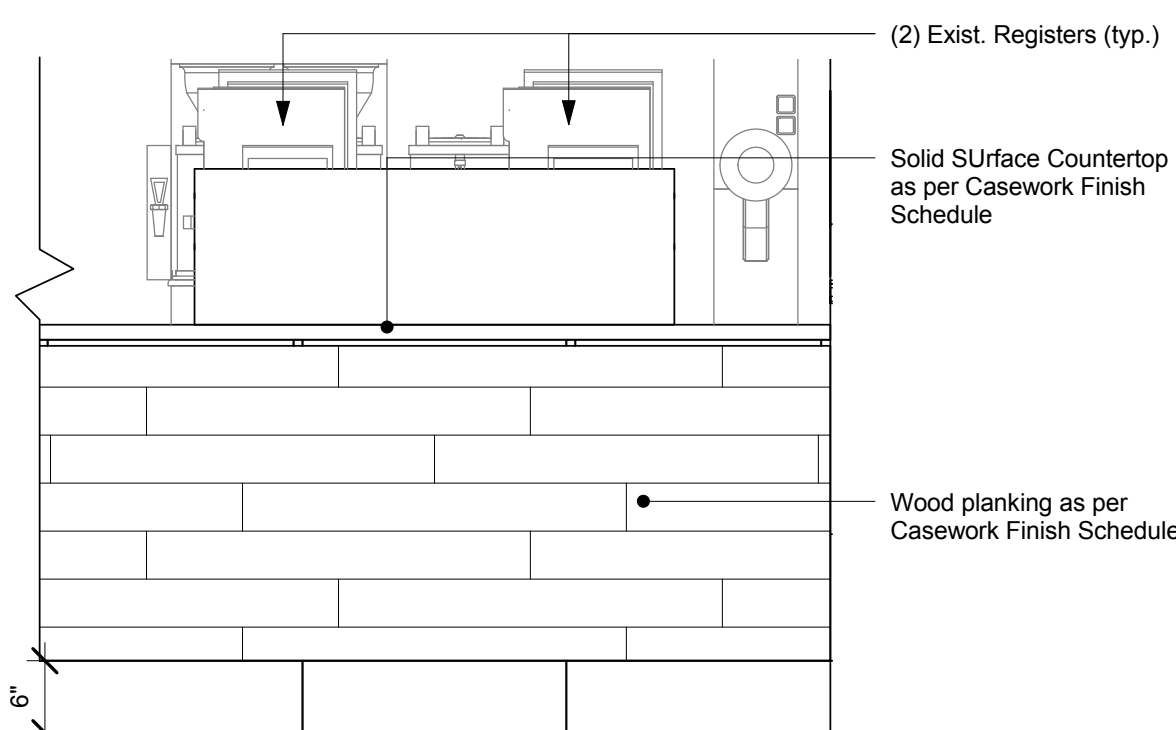
**2 Callout of ELEVATION @ FRONT BAR (PARTNER SIDE)**

Scale: 3/4" = 1'-0"



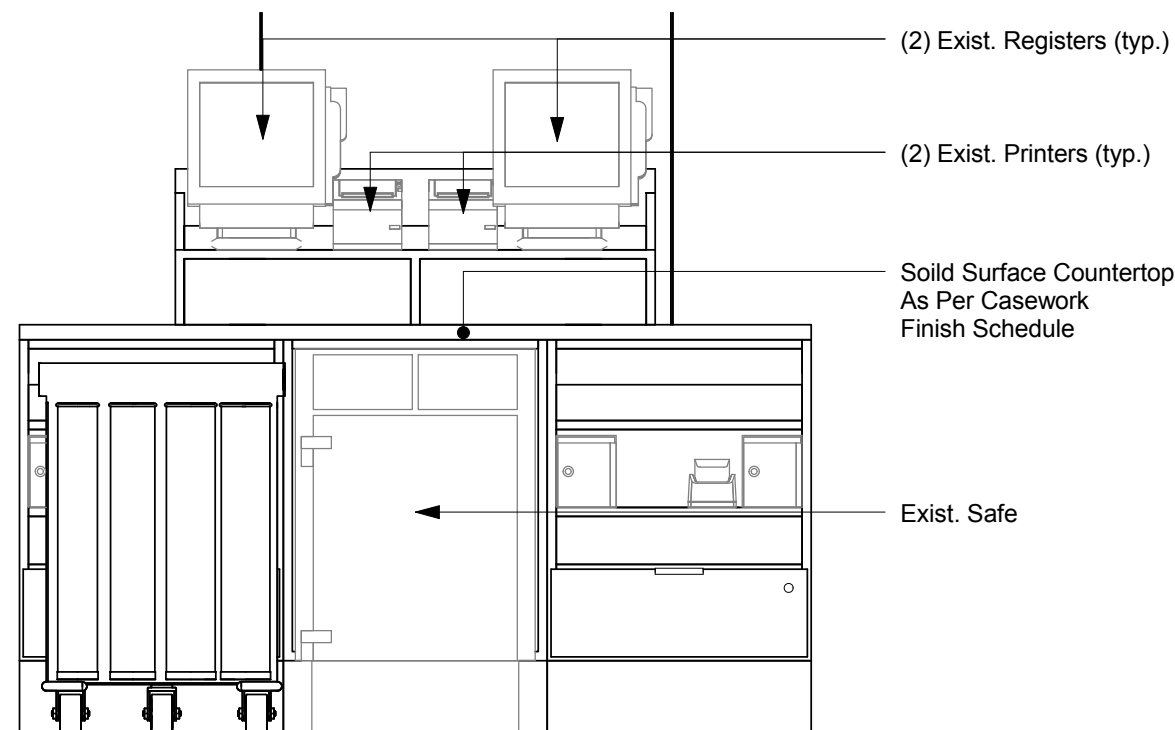
**3 ESPRESSO BAR - SIDE VIEW**

Scale: 3/4" = 1'-0"



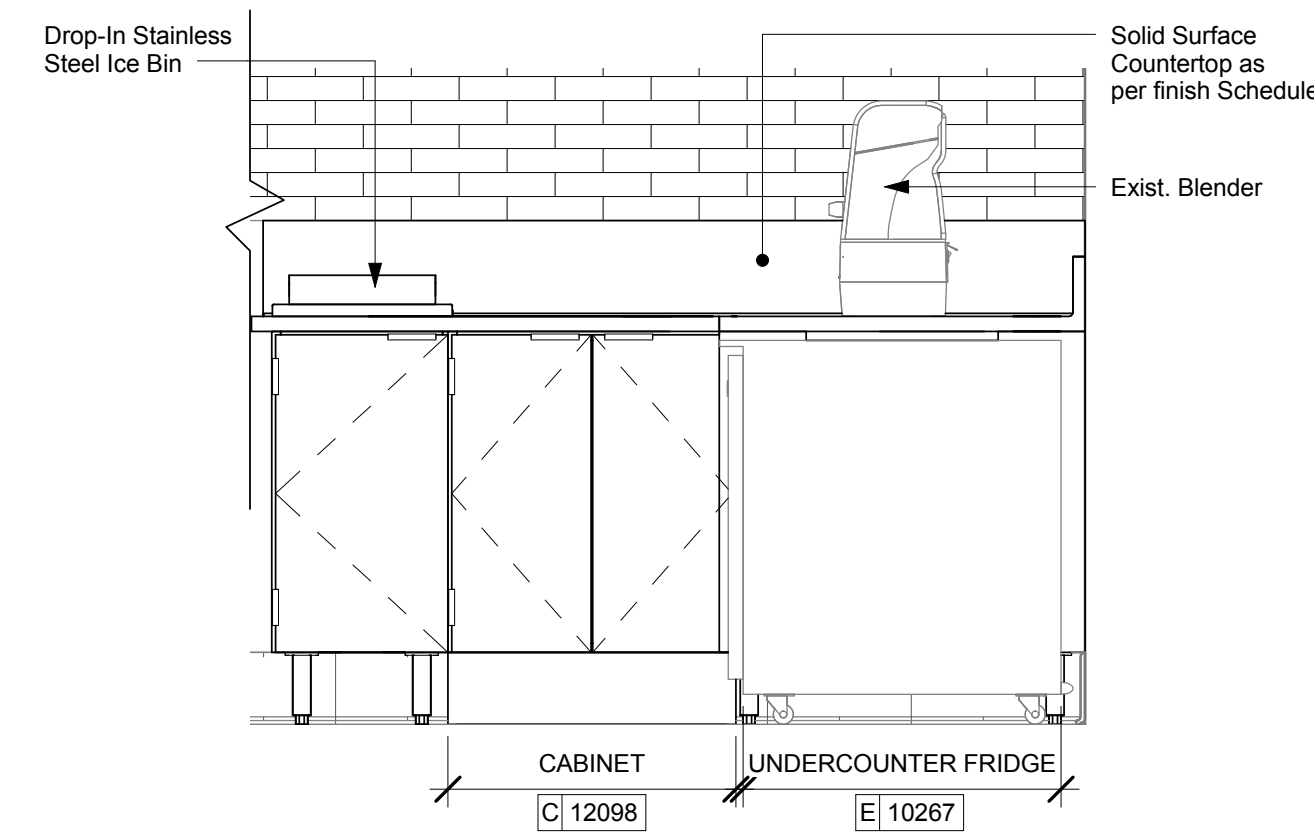
**4 POS ELEVATION (CUSTOMER'S SIDE)**

Scale: 3/4" = 1'-0"



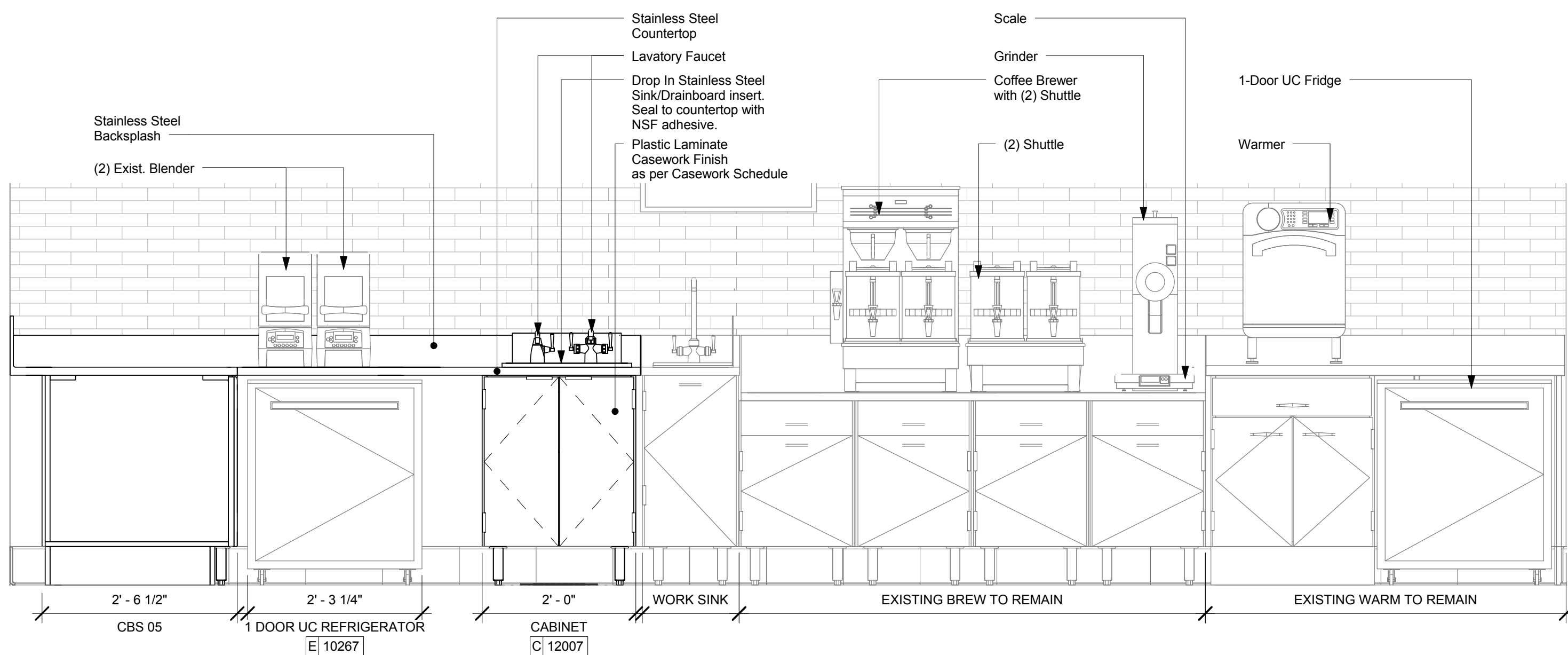
**5 POS ELEVATION (PARTNER SIDE)**

Scale: 3/4" = 1'-0"



**6 CBS ELEVATION - PARTNER'S SIDE**

Scale: 3/4" = 1'-0"



**7 Callout of ELEVATION @ BACKBAR**

Scale: 3/4" = 1'-0"

**NOTE:**  
 FOR ALL EXISTING CABINETS TO REMAIN  
 - NEW LAMINATE ON ALL EXISTING FACES  
 - NEW FRP ON ALL INTERIOR FACES  
 - NEW STAINLESS STEEL U-CHANNELS FOR SUPPORT. CM TO COORDINATE.