



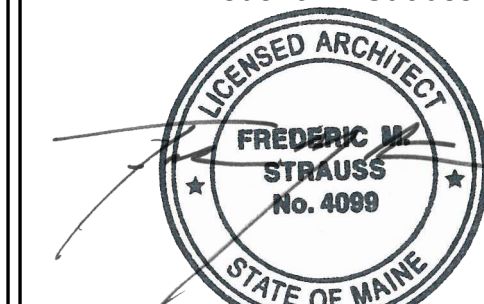
STARBUCKS COFFEE COMPANY
 2401 UTAH AVENUE SOUTH
 SEATTLE, WASHINGTON 98134
 (206) 318-1575

THESE DRAWINGS AND SPECIFICATIONS ARE CONFIDENTIAL AND SHALL REMAIN THE SOLE PROPERTY OF STARBUCKS CORPORATION, WHICH IS THE OWNER OF THE COPYRIGHT IN THIS WORK. THEY SHALL NOT BE REPRODUCED (IN WHOLE OR IN PART), SHARED WITH THIRD PARTIES OR USED IN ANY MANNER ON OTHER PROJECTS OR EXTENSIONS TO THIS PROJECT WITHOUT THE PRIOR WRITTEN CONSENT OF STARBUCKS CORPORATION. THESE DRAWINGS AND SPECIFICATIONS ARE INTENDED TO EXPRESS DESIGN INTENT FOR A PROTOTYPICAL STARBUCKS STORE (WHICH IS SUBJECT TO CHANGE AT ANY TIME) AND DO NOT REFLECT ACTUAL SITE CONDITIONS. NEITHER PARTY SHALL HAVE ANY OBLIGATION NOR LIABILITY TO THE OTHER (EXCEPT STATED ABOVE) UNTIL A WRITTEN AGREEMENT IS FULLY EXECUTED BY BOTH PARTIES.

T P G
 ARCHITECTURE

TPG Architecture, LLP
 360 Park Avenue, South, New York, New York 10010
 212 768 0800 212 768 1597 fax
 www.tpgarchitecture.com

Frederic M. Strauss



ME License No. 4099
 Architect of Record

Revision Schedule			
Rev	Date	By	Description

PROJECT NAME:
NORTHGATE PLAZA
 PROJECT ADDRESS:
**91 AUBURN STREET,
 PORTLAND ME 04103**

STORE #: 2830
 PROJECT #: 22764-021
 CONCEPT:
 PALETTE:
 ISSUE DATE: 12/19/2013
 DESIGN MANAGER: Eta Kliger
 LEED® AP:
 PRODUCTION DESIGNER: AH
 CHECKED BY: Allison Stadnyck

SHEET TITLE:
REFLECTED CEILING PLAN

SCALE: 1/4" = 1'-0"

SHEET NUMBER:
I-1108

RESPONSIBILITY LEGEND

GC PROVIDED BY GENERAL CONTRACTOR
 LL PROVIDED BY LANDLORD
 VD PROVIDED BY VENDOR
 WH PROVIDED BY STARBUCKS WAREHOUSE

NOTE: ALL RESPONSIBILITIES TO BE CONFIRMED WITH STARBUCKS DM PRIOR TO ORDERING / CONSTRUCTION.

GC to verify Existing HVAC Equipment, lighting and sprinkler prior to construction (with adequate time) and coordinate with Starbucks PM and DM as well as AOR.

REFLECTED CEILING PLAN NOTES

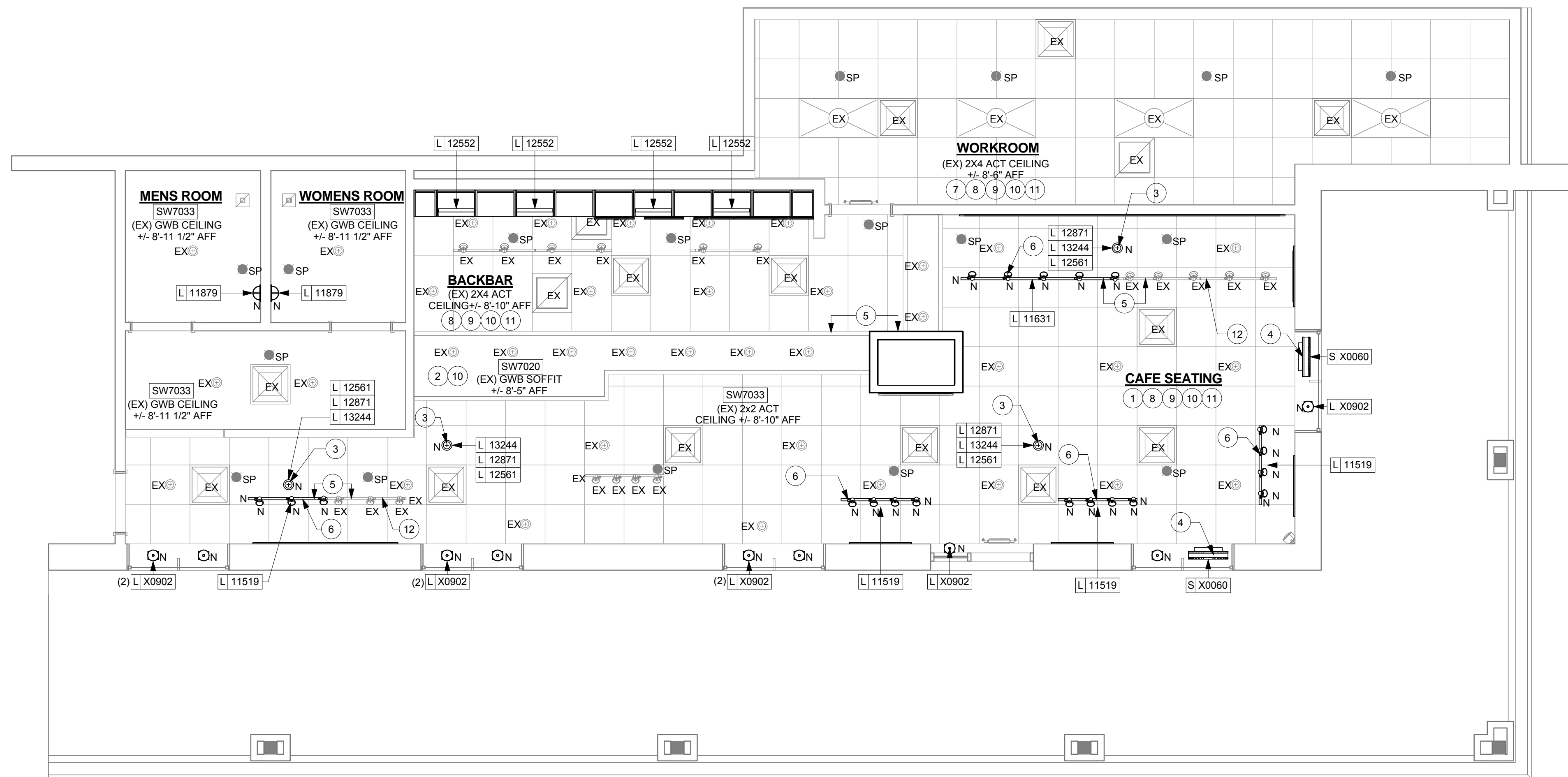
- A. IF REQUIRED BY LOCAL CODE, GENERAL CONTRACTOR TO PROVIDE SEMI-RECESSED SPRINKLER HEADS WITH POLISHED CHROME ESCUTCHEONS CENTERED IN ACOUSTICAL CEILING TILE. IF PENDANT HEADS ARE REQUIRED IN GYPSUM SOFFIT OVER FRONTBAR, CONCEAL SUPPLY PIPING WITHIN SOFFIT. GENERAL CONTRACTOR TO SUBMIT SPRINKLER LAYOUT TO STARBUCKS' CONSTRUCTION MANAGER FOR APPROVAL PRIOR TO INSTALLATION.
- B. GENERAL CONTRACTOR TO PROVIDE AND LOCATE SPRINKLERS PER LOCAL CODES. CONTACT STARBUCKS CONSTRUCTION MANAGER IF DESIGN INTENT IS AFFECTED.
- C. WHERE ACOUSTICAL CEILING MEETS WALL, PROVIDE ANGLE WALL MOLDING FOR REVEAL. MATCH CEILING GRID COLOR WHEN APPLICABLE.
- D. LEAVE (10) ADDITIONAL RETAIL CEILING TILES, TO MATCH RETAIL CEILING PAINT COLOR, ABOVE THE WORKROOM CEILING AT MANAGER'S DESK FOR FUTURE USE.
- E. PROVIDE GROMMET AT ALL CEILING PENETRATIONS FOR FIXTURES OR SUPPORTS.
- F. HEATING, VENTILATING, AND AIR CONDITIONING (HVAC) SHOWN FOR DESIGN INTENT ONLY. CONTACT PROJECT MANAGER IF CHANGED.
- G. DIFFUSERS AND RETURNS AT BACKBAR IN ACOUSTICAL CEILING TILE TO BE CENTERED IN TILE, PAINTED TO MATCH ADJACENT FINISHES, TYPICAL.
- H. PAINT ALL HVAC DUCTS, HVAC DIFFUSERS, RECESSED SPEAKERS AND LIGHT TRIM RINGS THE SAME COLOR AS CEILING OR SOFFIT. TYPICAL THROUGHOUT RETAIL PORTION OF STORE.
- J. PAINT SUBSTITUTIONS ARE NOT ALLOWED. USE STARBUCKS' NATIONAL ACCOUNT "COLOR CODE" WHEN ORDERING PAINTS. SEE SCHEDULE SHEETS FOR SCHEDULES.
- K. SEE LIGHTING DESIGN PLAN FOR FIXTURE TYPES AND LOCATION DIMENSIONS.

SHEET NOTES

- 1. EXISTING ACT AND GENERAL LIGHTING FIXTURES IN CAFE AREA TO REMAIN. AS NOTED (EX).
- 2. EXISTING DROP SOFFIT AND EXISTING LIGHTING FIXTURES TO REMAIN. PATCH GWB AS REQUIRED AFTER REMOVAL OF PENDANTS.
- 3. INSTALL NEW FIXTURE IN CENTER OF EXISTING ACT TILE. GC TO VERIFY EXISTING CONDITIONS IN FIELD AND COORDINATE WITH STARBUCKS CONSTRUCTION MANAGER. AS NOTED (N).
- 4. REMOVE EXISTING VINYL GRAPHIC AND ACRYLIC'S FROM EXISTING LOGO SIGN, BOTH SIDES. PRESERVE SIGN CASING AND HARDWARE FOR REUSE WITH NEW VINYL GRAPHIC AND ACRYLIC. REMOVE LIGHT IN PREPARATION FOR NEW LED FIXTURE.
- 5. ALIGN.
- 6. INSTALL NEW FIXTURE. GC TO VERIFY EXISTING CONDITIONS IN FIELD AND COORDINATE WITH STARBUCKS CONSTRUCTION MANAGER. AS NOTED (N).
- 7. EXISTING BOH ACT AND GENERAL LIGHTING FIXTURES TO REMAIN.
- 8. EXISTING SPRINKLERS TO REMAIN. GC TO VERIFY EXISTING CONDITIONS IN FIELD AND COORDINATE WITH STARBUCKS CONSTRUCTION MANAGER.
- 9. EXISTING MECHANICAL TO REMAIN. GC TO VERIFY EXISTING CONDITIONS IN FIELD AND COORDINATE WITH STARBUCKS CONSTRUCTION MANAGER.
- 10. EXISTING CEILING TO REMAIN.
- 11. CLEAN AND MAINTAIN EXISTING ACT CEILING FINISH. PAINT WHERE NOTED.
- 12. RELOCATED EXISTING FIXTURE.

LIGHTING LEGEND

EX - EXISTING LIGHTING TO REMAIN
 N - NEW LIGHTING AS PER SCHEDULE
 SP - EXISTING SPRINKLER



1 1ST FLOOR - REFLECTED CEILING PLAN

Scale: 1/4" = 1'-0"

