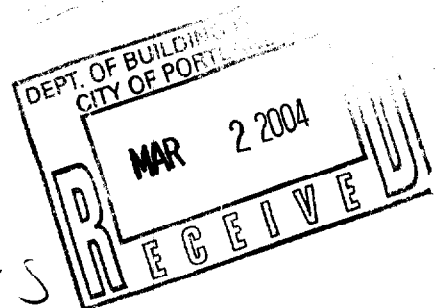


3/2/04



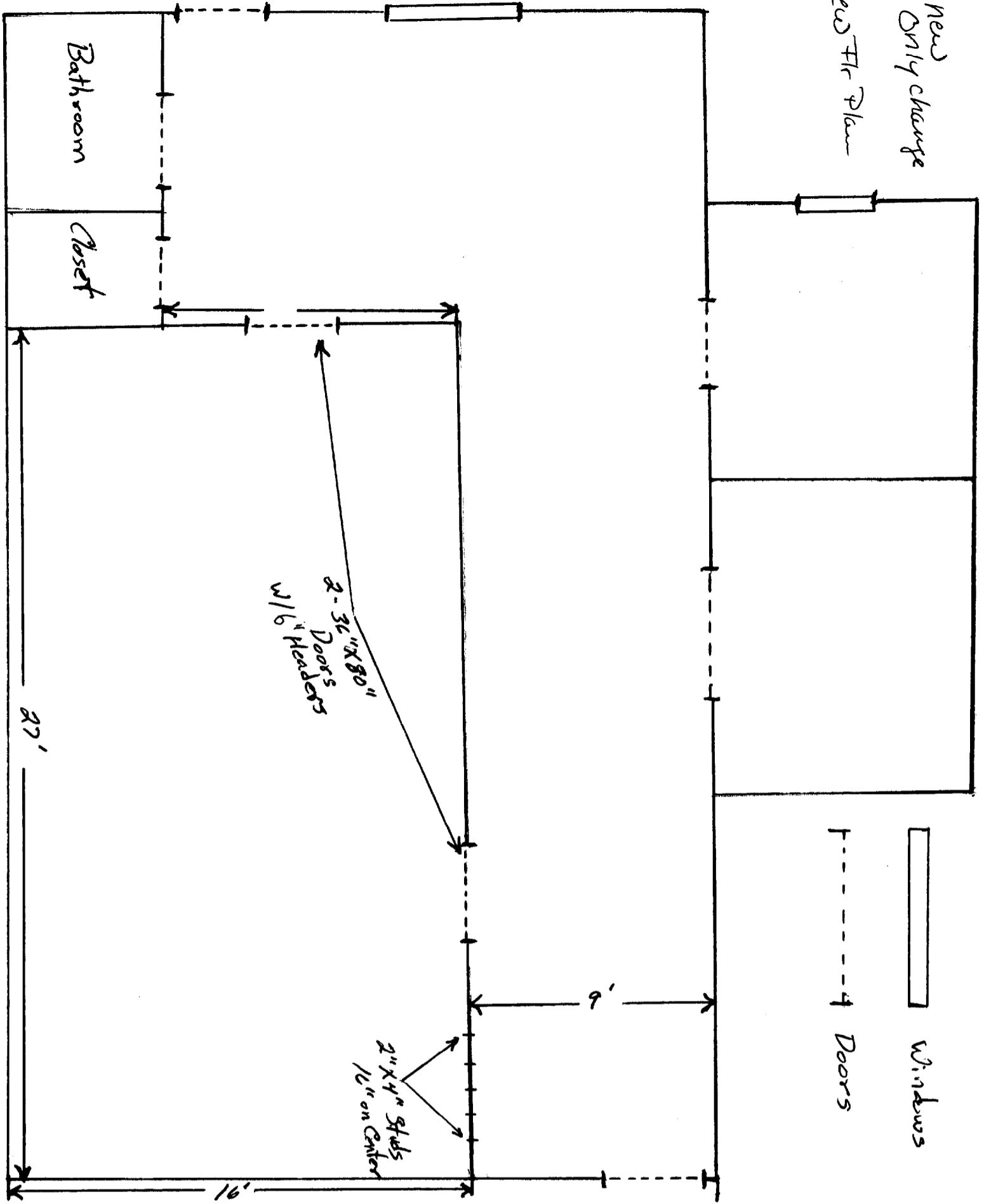
Materials

- 412 2x4x8 footers
- 6 2x6x10 booties
- 19 1/2 inch 4x8 gypsum sheetrock
- 2 36x80 man doors  
(not solid core hollow inside)

Installing 12x27 partitioned non-bearing wall for additional separation of larger room. Studs will be nailed into the cement floor and will go above the ceiling and tie into existing wall with the 2x6x10 booties located every four feet. These are the corner utility wall and the corner connected to entrance wall.

375

New  
Only change  
New FR Plan



375 A 023

Windows

Doors

Bathroom

Closet

27'

16'

6'

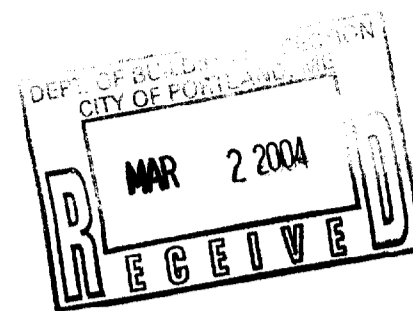
2 - 36" x 80"  
Doors  
w/ 6" Headers

2" x 4" studs  
16" on Center



Print - Close Window

**From:** "Mike Hollyday" <mike@mainelandconsultants.com>  
**To:** "Bob & Stacy Cardona" <bob112564@yahoo.com>  
**Subject:** 94 Auburn Street, Suite 108  
**Date:** Tue, 2 Mar 2004 10:16:25 -0500



March 2, 2004

Bob and Stacy,

This is to confirm my permission for you to erect new walls in your office at Suite 108, 94 Auburn Street, Portland. Specifically, you are enclosing a large room and including two new doors in the walls.

If there are any other questions, don't hesitate to call me at 774-6226 (work) or 318-6434 (cell).

Michael Hollyday, Member  
94 Auburn LLC  
P.O. Box 2133  
South Portland, ME 04116-2133

[http://us.f400.mail.yahoo.com/ym/ShowLetter?box=Inbox&MsgId=5356\\_1808040\\_42340\\_...](http://us.f400.mail.yahoo.com/ym/ShowLetter?box=Inbox&MsgId=5356_1808040_42340_...) 3/2/2004

375A 023

**L & L STRUCTURAL**

ENGINEERING SERVICES, INC.

Six Q Street  
South Portland, ME 04106  
Phone: (207) 767-4830  
Fax: (207) 799-5432

375 A 023001

December 8, 2003

Mike Nugent  
City of Portland – Inspections Office  
Portland, Maine 04101

Subject: Renovation of 94 Auburn Street, Portland, Maine - **Special Inspections.**

Items Inspected: Structural Steel

Inspection Notes

**STRUCTURAL STEEL:**

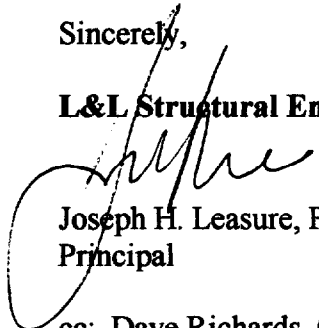
- The structural steel was fabricated and supplied by LMC Light Iron, Inc. who is a local steel fabricator.
- A review of the structural steel notes on the design drawings indicate all Structural Steel shall meet the requirements of ASTM A36, all welding is to conform with AWS D1.1 using E70XX electrodes, and all bolting shall be performed using 3/4" diameter A325N bolts.
- A review of the shop drawings indicates the steel being supplied meets the requirements of ASTM A36, the bolts are A325-N (Bearing Type), and the welds used in the fabrication process conform with AWS D1.1 for E70xx welding procedures.
- A visual inspection of the erected steel indicates that the beam sizes and locations are in accordance with design drawings (second floor framing plan).
- A visual inspection of the beam connections in the field indicates the bolts used for steel erection are A325N bolts, all boltholes are filled, and the plane of the beam web is in contact with the plane of the shear tabs. This meets the AISC ASD requirement for bearing type connections where slip critical connections are not required.

Renovation of 94 Auburn Street  
12/8/03  
Page 2

If you feel any of the above information is inaccurate, please do not hesitate to call so we have the opportunity to perform a re-inspection of the specific item.

Sincerely,

**L&L Structural Engineering Services, Inc.**

  
Joseph H. Leasure, P.E.  
Principal

cc: Dave Richards, Gawron Turgeon Architects  
Paul Laliberte, Allied/Cook Construction

