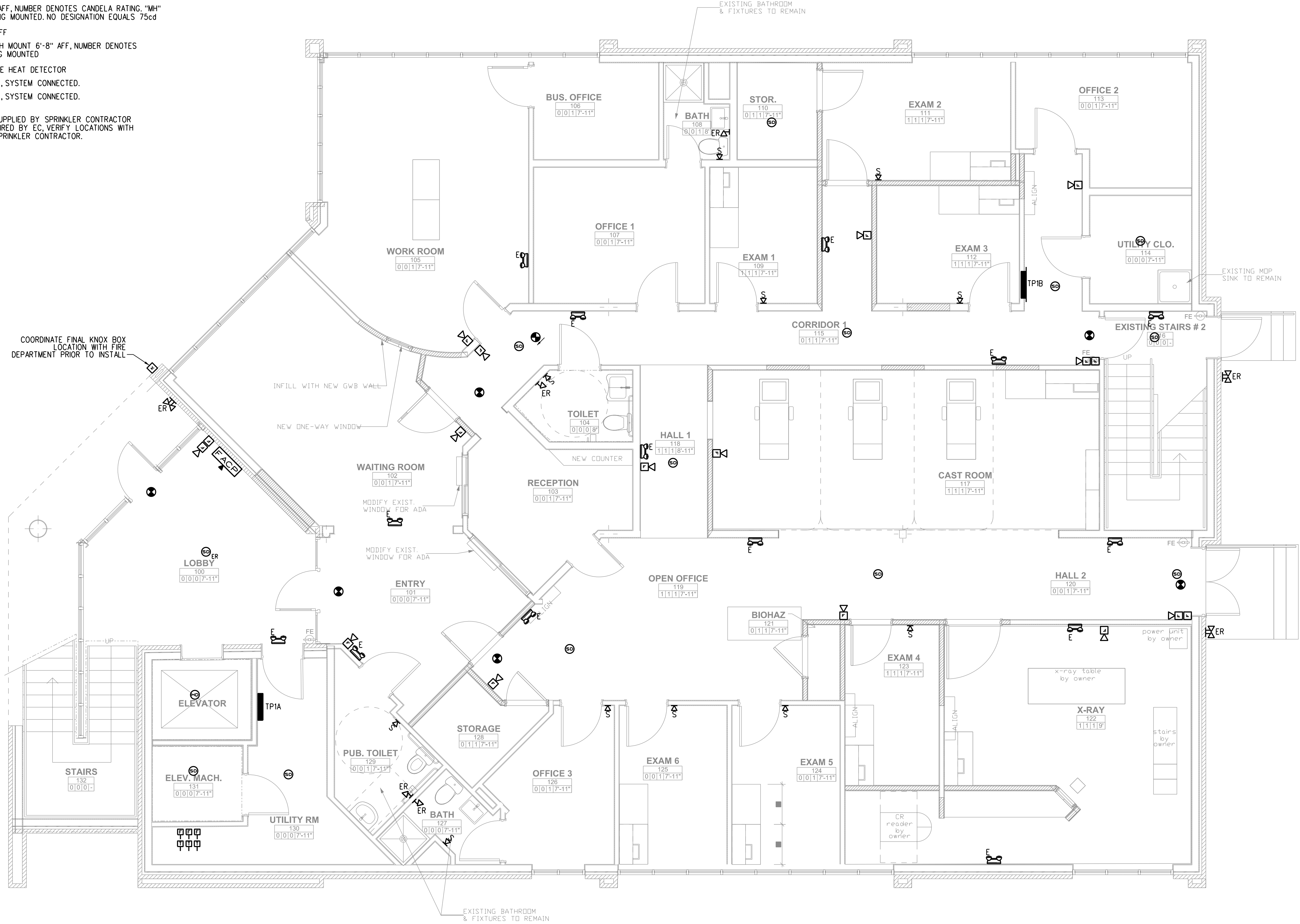


SYMBOL LEGEND

- SELF CONTAINED EMERGENCY LIGHT W/2 HEADS DUAL-LITE (LED) MODEL LZ25-03L, 25 WATTS FOR 90 MINUTES, COLOR BY ARCHITECT
- EXTERIOR REMOTE HEAD DUAL-LITE (LED) MODEL No OCRD 1203L COLOR BY ARCHITECT
- INTERIOR REMOTE HEAD DUAL-LITE (LED) MODEL LZR-S-x-03L COLOR BY ARCHITECT
- EXIT LIGHT FIXTURE, UNSWITCHED, DUAL-LITE LX-U-R-W-E OR APPROVED EQUAL
- EXIT/ EMERGENCY LIGHT COMBO, DUAL-LITE No EVCU-R-D4-10R APPROVED EQUAL COLOR BY ARCHITECT
- FIRE ALARM CONTROL PANEL WITH DEDICATED TELEPHONE JACK
- FIRE ALARM ANNUCIATOR PANEL
- FIRE DEPARTMENT KNOX BOX, COORDINATE LOCATION WITH LOCAL FIRE DEPARTMENT
- FIRE ALARM AUDIO/VISUAL, MOUNT 6'-8" AFF, NUMBER DENOTES CANDELA RATING. "MH" DENOTES MINIHORN, "CL" DENOTES CEILING MOUNTED. NO DESIGNATION EQUALS 75cd
- FIRE ALARM PULL STATION, MOUNT 48" AFF
- FIRE ALARM VISUAL STROBE ONLY, FLUSH MOUNT 6'-8" AFF, NUMBER DENOTES CANDELA RATINGS. "CL" DENOTES CEILING MOUNTED
- SYSTEM CONNECTED FIXED TEMPERATURE HEAT DETECTOR
- SMOKE DETECTOR, PHOTOELECTRIC TYPE, SYSTEM CONNECTED.
- SMOKE DETECTOR, PHOTOELECTRIC TYPE, SYSTEM CONNECTED. "ER" DENOTES ELEVATOR RECALL
- SPRINKLER SYSTEM FLOW SWITCH } SUPPLIED BY SPRINKLER CONTRACTOR
- SPRINKLER SYSTEM TAMPER SWITCH } WIRED BY EC, VERIFY LOCATIONS WITH SPRINKLER CONTRACTOR.

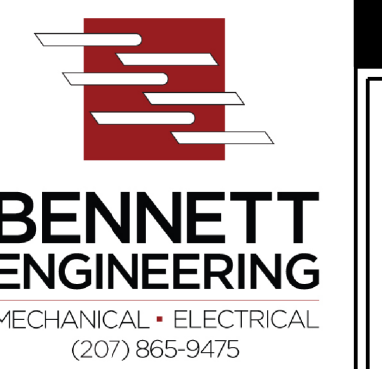


COORDINATE FINAL KNOX BOX LOCATION WITH FIRE DEPARTMENT PRIOR TO INSTALL

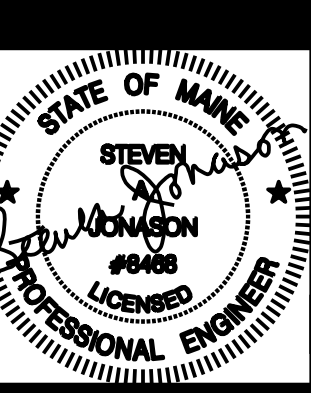
EXISTING BATHROOM & FIXTURES TO REMAIN

EXISTING MOP SINK TO REMAIN

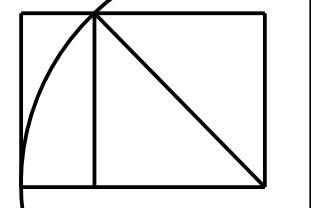
EXISTING BATHROOM & FIXTURES TO REMAIN



MEDICAL OFFICES FOR
 NEW ENGLAND FOOT & ANKLE
 RENOVATIONS TO
 117 AUBURN STREET
 PORTLAND, MAINE



WHIPPLE
 CALLENDER
 ARCHITECTS



136 PLEASANT AVE.
 PORTLAND, ME 04103
 P 207.775.3996
 F 207.775.3631
 www.whipplecallender.com

DATE	DESCRIPTION

DATE: 5/01/17
 CHECKED BY: SAJ
 DRAWN BY: PMC
 JOB: #Pln
 SHEET TITLE:

FIRST FLOOR
 LIFE SAFETY
 PLAN

LS2.1

ISSUED FOR PERMIT 3-6-2017
 REVISED 5-1-2017

1 FIRST FLOOR LIFE SAFETY PLAN
 SCALE: 1/4" = 1'-0"

THIS DRAWING IS AN INSTRUMENT OF SERVICE AND SHALL REMAIN THE PROPERTY OF WHIPPLE CALLENDER ARCHITECTS. IT SHALL NOT BE USED FOR ANY OTHER PURPOSE THAT FOR WHICH IT IS SPECIFICALLY FURNISHED.