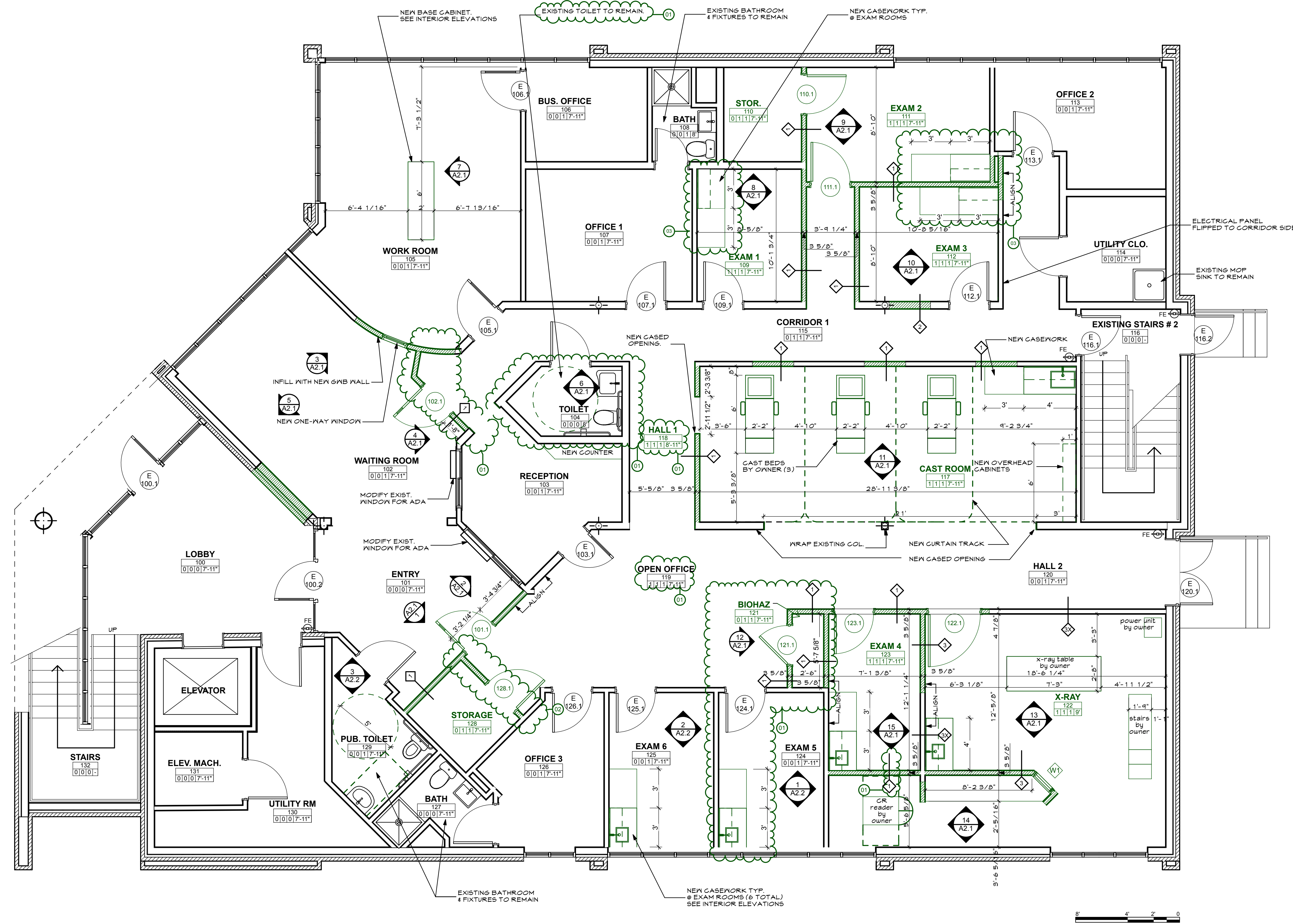
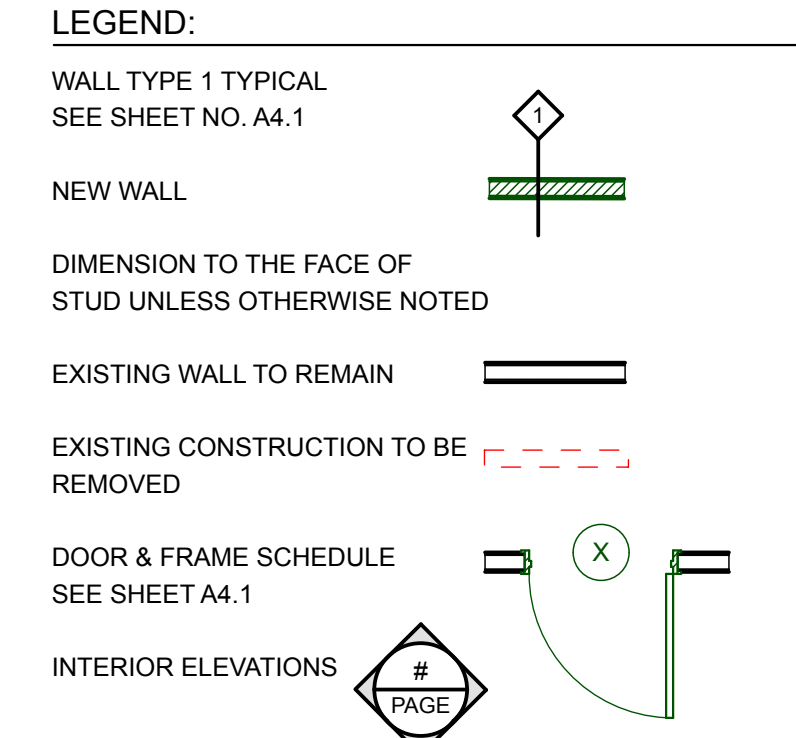


**WHIPPLE
CALLENDER
ARCHITECTS**

136 PLEASANT AVE.
PORTLAND, ME 04103
P 207.775.2694
F 207.775.3631
www.whipplecallender.com



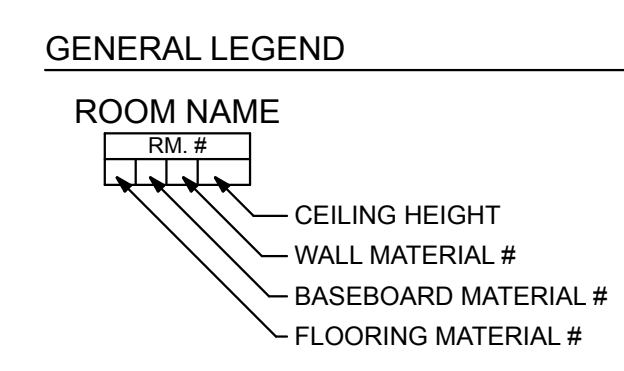
- FINISH NOTES:**
1. PROVIDE PAPER TOWEL DISPENSER AT ALL SINKS
 2. PROVIDE TWO COAT HOOKS ON BACK OF DOOR FOR ALL EXAMS, AND OFFICES. SEE INTERIOR ELEVATION FOR TYPICAL HOOK LOCATION.
 3. WALL PAINT TO BE EGGSHELL.
 4. DOOR FRAME PAINT TO BE SATIN GLOSS
 5. HANG TENANT SUPPLIED GLOVE BOX & SHARPS CONTAINER.
 6. PROVIDE ADA TACTILE SIGNAGE AT BATHROOMS.



REVISED 5-1-17
ISSUED FOR PERMIT
MARCH 6, 2017

1 FIRST FLOOR PLAN
SCALE: 1/4" = 1'-0"

- GENERAL NOTES:**
1. VERIFY ALL DIMENSIONS IN THE FIELD. REPORT ALL DISCREPANCIES TO ARCHITECT PRIOR TO COMMENCEMENT WITH WORK.
 2. NOTED DIMENSIONS TAKE PRECEDENT OVER SCALED DIMENSIONS. LARGE DETAILS TAKE PRECEDENT OVER SMALL SCALED DETAILS.
 3. ALL NEW CONSTRUCTION DIMENSIONS ARE ROUGH OPENINGS UNLESS NOTED OTHERWISE. DIMENSIONS TO EXISTING WALL CONSTRUCTION ARE TO FINISH SURFACE.
 4. PROVIDE SOLID BLOCKING FOR ALL CABINETS AND ACCESSORIES. REVIEW INTERIOR ELEVATIONS AND DETAILS FOR LOCATIONS.



ROOM FINISH LEGEND

FLOORING MATERIAL FIRST NO. OF 4	BASEBOARD MATERIAL SECOND NO. OF 4	WALL FINISH THIRD NO. OF 4
0 NO CHANGE	0 NO CHANGE	0 NO CHANGE
1 V.C.T.	1 4" VINYL	1 PAINT
2 CARPET		

DESCRIPTION

DATE	DESCRIPTION
2-26-2017	ISSUED FOR STATE FIRE MARSHAL
3-6-2017	ISSUED FOR PERMIT W/ SURVEY
4-6-2017	REVISION # 1 PLAN REVISIONS
4-10-2017	REVISION # 2
4-25-2017	REVISION # 3
5-1-2017	SECOND FLOOR TENANT FIT-UP

DATE: 5/9/17
CHECKED BY: AEC
DRAWN BY: CLL
JOB: NEF
SHEET TITLE: FIRST FLOOR PLAN

A1.1